

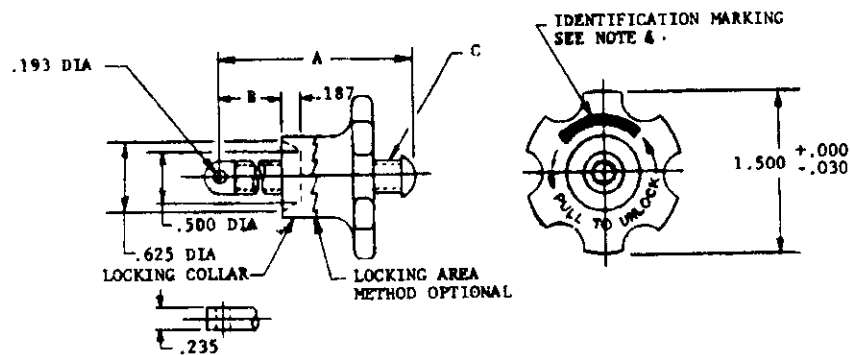
FED. SUP CLASS
5340USER SYMBOLS:
ARMY - AV, ATREVIEWER SYMBOLS:
ARMY - AR
USAF - 8S
DLA - IS

"Review/revise" information is current as of the date of this document.
For future coordination of changes to this document, draft circulation
should be based on the information in the current DOD/SS.

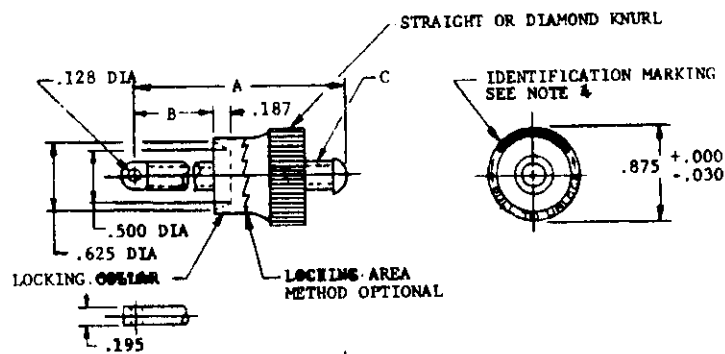
DISTRIBUTION STATEMENT A: APPROVED FOR PUBLIC RELEASE; DISTRIBUTION IS UNLIMITED.

AMSC N/A

This military standard is approved for use by all Departments
of the Department of Defense. Its action for all new
engineering and design applications and for replacement use shall
be made from this document.



DASH NOS -1 AND -2



DASH NOS -3 AND -4

TABLE I

MS NUMBER	DASH NO.	A	(F) B MIN	C	LOAD LBS MIN (F)	MAX WT OZS
MS14108	-1	1.88	1.00	.312-24 UNF 2A	2,000	3
MS14108	-2	2.75	1.88	.312-24 UNF 2A	2,000	3
MS14108	-3	1.88	1.00	.250-28 UNF 2A	1,000	2.5
MS14108	-4	2.75	1.88	.250-28 UNF 2A	1,000	2.5

(F) CANCELLED. Superseded by MIL-F-85731, MIL-F-85731/1 and MIL-F-85731/2.

(F) INACTIVE FOR NEW DESIGN AFTER APRIL 1988, USE MIL-F-85731. INTERCHANGEABILITY RELATIONSHIP: MS14108 AND MIL-F-85731 ITEMS IDENTIFIED BY THE SAME SIZE AND SUFFIX CHARACTERISTICS ARE UNIVERSALLY, FUNCTIONALLY AND DIMENSIONALLY INTERCHANGEABLE.

(F) DENOTES CHANGES

P.A. NAVY - AS Other Cust	TITLE FASTENER, POSITIVE SELF-LOCKING CASE MOUNTING, ELECTRONIC EQUIPMENT	MILITARY STANDARD MS14108
ARMY - USAF -	SHEET 1 OF 6	
PROCUREMENT SPECIFICATION MIL-C-172	SUPERSEDES	

DD FORM 672-1 (Coordinated)

PREVIOUS EDITIONS OF THIS FORM ARE OBSOLETE

PROJECT NO. 5340-1836

PLATE NO. 2786

APPROVED 25 JUNE 1971 REVISED (D) 15 OCT 82 (E) 14 APR 85 (F) 7 DEC 87

REVIEWER SYMBOLS:
ARMY - AB
USAF - BS
DA - IS

USER SYMBOLS:
ARMY - AV, AT

"Revision/User information is current as of the date of this document.
For future coordination of changes to this document, draft circulation
should be based on the information in the current DODISS."

This drawing is intended to be used for design purposes only. It is not to be used for manufacturing and assembly purposes. It is not to be used for procurement and distribution purposes. It is not to be used for identification and for repair and maintenance purposes. It is not to be used for any other purpose.

TABLE II										
MS NUMBER	DASH NO.	A	B MIN.	THREAD (UNF-3A)	C RAD.	D $\begin{smallmatrix} +.003 \\ -.000 \end{smallmatrix}$	E	F MAX.	J FLAT MIN.	LOAD (LBS)
MS14108	-5	2.03	1.000	.250-28	.156	.128	.156	1.000	.510	1000
MS14108	-6	2.41	1.375	.250-28	.156	.128	.156	1.000	.510	1000
MS14108	-7	2.91	1.875	.250-28	.156	.128	.156	1.000	.510	1000
MS14108	-8	2.03	1.000	.312-24	.190	.160	.183	1.000	.510	2000
MS14108	-9	2.41	1.375	.312-24	.190	.160	.183	1.000	.510	2000
MS14108	-10	2.91	1.875	.312-24	.190	.160	.183	1.000	.510	2000

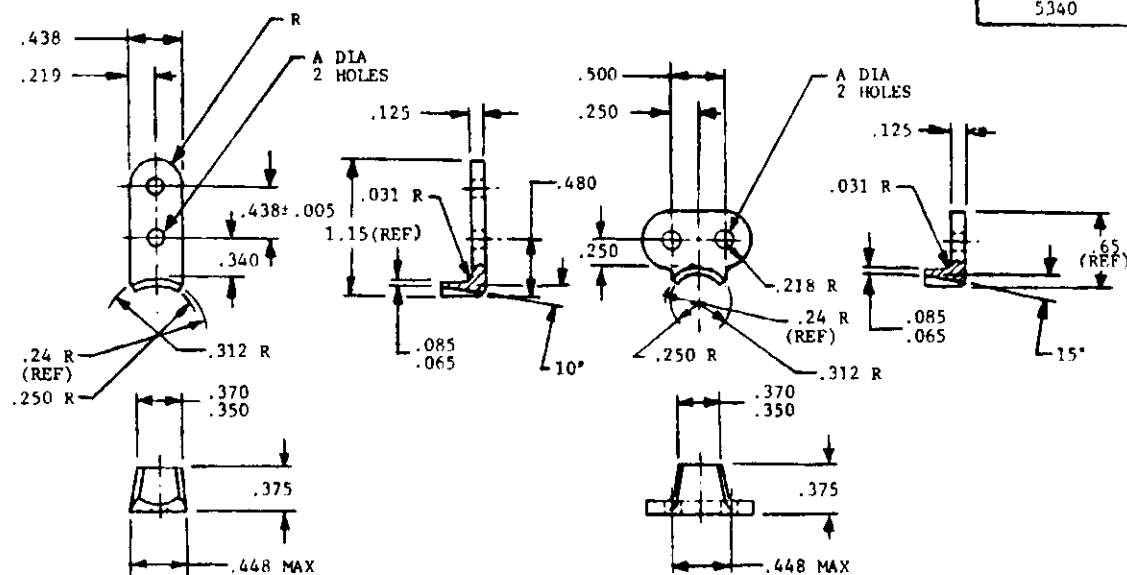
P.A. NAVY - AS Other Cust	TITLE FASTENER, POSITIVE SELF-LOCKING CASE MOUNTING, ELECTRONIC EQUIPMENT	MILITARY STANDARD MS14108
PROCUREMENT SPECIFICATION	SUPERSEDES	SHEET 2 OF 6

USER SYMBOLS:
ARMY - AV, AT
NAVY - AS
USAF - B5
NLA - 15

REVIEWER SYMBOLS:
ARMY - AR
USAF - B5
NLA - 15

"Review/user information is current as of the date of this document. For future coordination of changes to this document, draft circles on should be based on the information in the current DODISS."

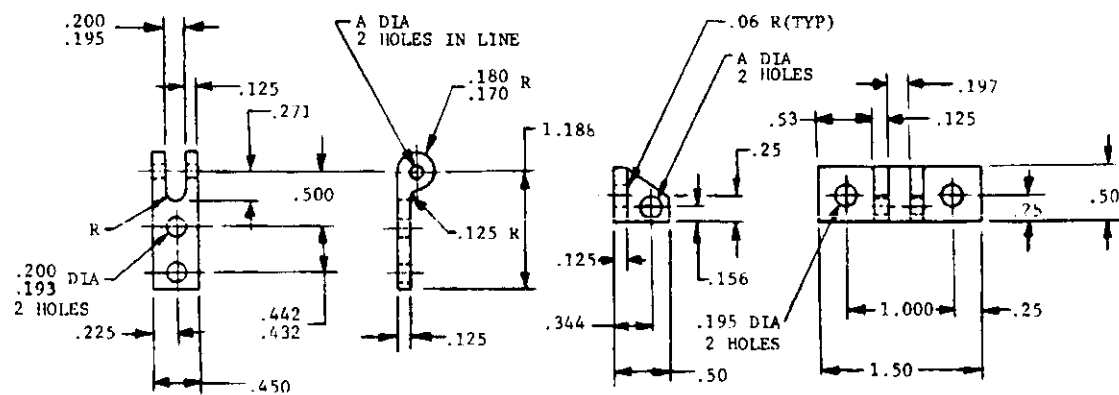
This military standard is approved for use by all Departments & Agencies of the Department of Defense. Selection for all new engineering and design applications and for redesigns shall be made from this document.



-11 AND -12 HOOK

DASH NO'S -11 THRU -14

-13 AND -14 HOOK



-15 AND -16 HINGE

DASH NO'S -15 THRU -18

-17 AND -18 HINGE

TABLE 111

MS NUMBER	DASH NO.		A	LOAD (LBS MIN)	MATING LATCH ASSY
	STEEL	CRES			
MS14108	-11	-11C	.167-.172	1000	-3,-4,-5,-6,-7
MS14108	-12	-12C	.193-.198	2000	-1,-2,-8,-9,-10
MS14108	-13	-13C	.167-.172	1000	-3,-4,-5,-6,-7
MS14108	-14	-14C	.193-.198	2000	-1,-2,-8,-9,-10
MS14108	-15	-15C	.128-.133	1000	-3,-4,-5,-6,-7
MS14108	-16	-16C	.160-.165	2000	-1,-2,-8,-9,-10
MS14108	-17	-17C	.128-.133	1000	-3,-4,-5,-6,-7
MS14108	-18	-18C	.160-.165	2000	-1,-2,-8,-9,-10

P.A.
NAVY - AS
Other Cust
ARMY - ER
USAF - 11

TITLE

FASTENER, POSITIVE SELF-LOCKING CASE
MOUNTING, ELECTRONIC EQUIPMENT

MILITARY STANDARD

MS14108

PROCUREMENT SPECIFICATION

SUPERSEDES

SHEET 3

OF 6

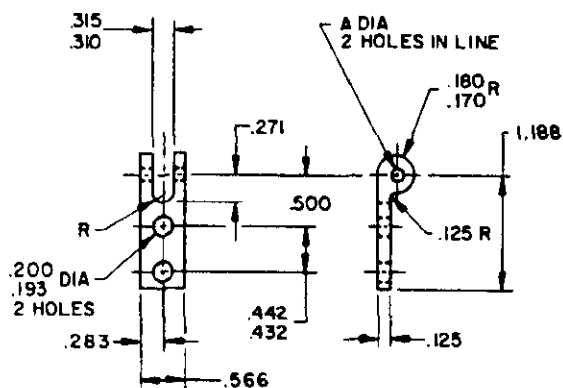
USER SYMBOLS:
ARMY - AR
NAVY - AV, AT

REVIEWER SYMBOLS:
ARMY - AR
USAF - 85
DIA - ES

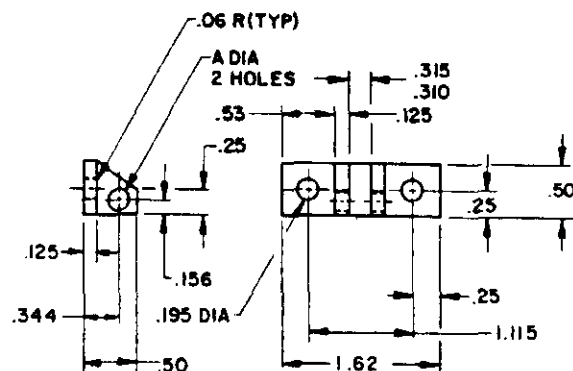
"Review/your information is current as of the date of this document.
For future coordination of changes in this document, draft circulation
should be based on the information in the current DODDSB."

DISTRIBUTION STATEMENT A: APPROVED FOR PUBLIC RELEASE. DISTRIBUTION IS UNLIMITED.
This military drawing is issued for use by all Departments &
Agencies of the Department of Defense. Revision for all new
engineering and design applications and for negative use shall be
made from this document.

AMSC N/A



(F) -19 AND -20 HINGE



(F) -21 AND -22 HINGE

(F) TABLE IV.

DASH NO.		A	LOAD (LBS MIN)	MATING LATCH ASSY
STEEL	CRES			
-19	-19C	.128-.133	1000	-5, -6, -7
-20	-20C	.160-.165	2000	-8, -9, -10
-21	-21C	.128-.133	1000	-5, -6, -7
-22	-22C	.160-.165	2000	-8, -9, -10

APPROVED 25 JUNE 1971 REVISED (F) FOR CHANGES SEE SHEETS 1 THRU 6

P.A. NAVY - AS Other Cust APM - EP USAF - 11	TITLE FASTENER, POSITIVE SELF-LOCKING CASE MOUNTING ELECTRONIC EQUIPMENT	MILITARY STANDARD MS14108 SHEET 2 OF 2
PROCUREMENT SPECIFICATION	SUPERSEDES:	

FED. SUP CLASS
5340USER SYMBOLS:
ARMY - AV, AT
USAF - 85
DA - ISREVIEWER SYMBOLS:
ARMY - AR
USAF - 85
DA - IS

"Review user information is current as of the date of this document.
For future coordination of changes to this document, draft circulation
should be based on the information in the current DODDS."

This military standard is approved for use by all Departments
& Agencies of the Department of Defense. Selection for all new
engineering and design applications and for repetitive use shall
be made from this document.

REQUIREMENTS (See Requirement 13):

1. THE FASTENER SHALL WITHSTAND 2,000 OR MORE CYCLES OF LOCKING AND UNLOCKING WITHOUT DEGRADATION OF PERFORMANCE.
2. THE FASTENER SHALL LOCK IN INCREMENTS OF NOT MORE THAN 30° (FOR +1 THRU +4) AND 15° (FOR -5 THRU -10).
3. THE FASTENER SHALL TIGHTEN BY TURNING KNOB ASSEMBLY CLOCKWISE AND SHALL LOCK UPON RELEASE OF THE KNOB ASSEMBLY. UNLOCKING SHALL BE ACCOMPLISHED BY PULLING AND/OR TURNING THE KNOB ASSEMBLY COUNTER-CLOCKWISE. NO TOOLS SHALL BE REQUIRED TO TIGHTEN, LOCK OR UNLOCK THE FASTENER.
4. THE FASTENER SHALL NOT BECOME LOOSE OR UNLOCK UNDER VIBRATION OR SHOCK WHEN SUBJECTED TO MIL-STD-810, METHOD 514, PROCEDURE 1, CURVE E AND TIME SCHEDULE 1 AND METHOD 516, PROCEDURE 1 USING SHOCK PULSE 516-2.
5. FASTENER SHALL NOT UNLOCK WHEN A TORQUE OF 125 INCH - POUNDS IS APPLIED TO DASH NOS. 1 AND 2 OR 75 INCH - POUNDS IS APPLIED TO DASH NOS. 3 AND 4.
6. FASTENER SHALL MEET SPECIFIED LOADS PER TABLE 1, II, AND III. ORIENTATION SHALL BE SUCH THAT THE LOAD LINE (THE LINE FROM THE PIN CENTER TO THE CONTACT POINT BETWEEN THE LOCKING COLLAR AND THE EQUIPMENT HOOK) IS AT AN APPROXIMATE ANGLE OF 45°. SEE FIGURE 1 BELOW.

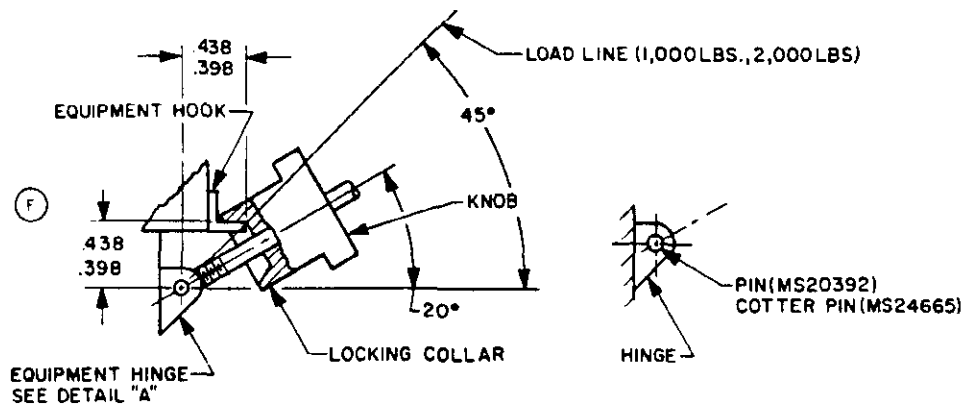


FIGURE 1

DETAIL A

7. THE SELF POSITIONING CONFIGURATION OF THIS FASTENER WILL ALLOW THE LATCH ASSEMBLY TO REMAIN ORIENTED IN ANY DESIRED POSITION AFTER EQUIPMENT REMOVAL. THIS CONFIGURATION SHOULD BE UTILIZED WHERE THE UNATTACHED LATCH ASSEMBLY WILL HANG IN A POSITION WHICH WOULD INTERFERE WITH THE INSTALLATION OR REMOVAL OF OTHER EQUIPMENT. THE SPACER STOP CONFIGURATION REDUCES "B" DIMENSION (AT MAXIMUM OPEN POSITION) BY .250.

8. THREADS SHALL BE ROLLED, FOR -5, -6, & -7 .312-24 THREADS OPTIONAL.

9. MATERIALS:

SCREW - CRES 316 PER QQ-S-763 COND. A OR 17-4PH PER AMS5643 COND. H1025.

WASHER - NYLON 6/6 PER L-P-410.

KNOB - CRES 316 PER QQ-S-763 COND. A OR ALUMINUM ALLOY 2024 T4 PER QQ-A-255/6 OR ALUMINUM ALLOY 2024 T3511 PER QQ-A-200/3, OR PM PMA SS 316L-R AND PASSIVATED PER QQ-P-35.

WASHER STOP - CRES 301 OR 302 PER MIL-S-5059.

LOCKING COLLAR - CRES 316 OR 304 PER QQ-S-763 COND. A. OPTIONAL MATERIAL: CRES 15-5PH PER AMS 5357, COND. H1000, HARDNESS ROCKWELL C33-39, OR PM PMA SS 316L-R AND PASSIVATED PER QQ-P-35.

HOOK - 4130 STEEL PER MIL-S-18729, HEAT TREAT IN ACCORDANCE WITH MIL-H-6875 HARDNESS ROCKWELL C43-44, CORROSION RESISTANT STEEL IN ACCORDANCE WITH QQ-S-763, CLASS 410, COND. T OR 17-7PH COND. RH 1000 PER AMS2759.

SPACER STOP - CRES 303 PER ASTM A582.

HINGE - ALLOY STEEL 4140 STEEL PER MIL-S-5626, HEAT TREAT IN ACCORDANCE WITH MIL-H-6875 HARDNESS ROCKWELL C39-42, CORROSION RESISTANT STEEL 17-4PH PER AMS5643 COND. H1025.

P.A.
NAVY - AS
Other CustARMY - ER
USAF - II

TITLE

FASTENER, POSITIVE SELF-LOCKING CASE
MOUNTING, ELECTRONIC EQUIPMENT

MILITARY STANDARD

MS 14108

PROCUREMENT SPECIFICATION

SUPERSEDES:

SHEET 5 OF 6

USER SYMBOLS:
ARMY - AV, AT

REVIEWER SYMBOLS:
ARMY - AR
USAF - 85
DLA - 15

FED. SUP CLASS
5340

REQUIREMENTS: (CONTINUED)

10. FINISH: ALL CRES COMPONENTS - PASSIVATE PER QQ-P-35.
ALUMINUM COMPONENTS - ANODIZE PER MIL A-8625, TYPE II, CLASS 1 OR TYPE III, CLASS 1.
ALLOY STEEL - CADMIUM PLATE PER QQ-P-416, TYPE II, CLASS 2. BAKE WITHIN 2 HOURS AFTER PLATING FOR 23 HOURS AT 375°F.
11. LUBRICANT: DRY FILM LUBRICANT IN ACCORDANCE WITH MIL-L-8937.
12. ALLOY STEEL PARTS SHALL BE MAGNETIC PARTICLE INSPECTED PER MIL-STD-1949
13. CORROSION RESISTANT STEEL PARTS SHALL BE FLUORESCENT PENETRANT INSPECTED PER MIL-STD-883C. POWDERED METAL PARTS ARE EXEMPT FROM THIS INSPECTION.
14. WHEN SPECIAL HOLES ARE REQUIRED TO MEET DESIGN REQUIREMENTS, THE TIP CONFIGURATION SHALL BE PER MS14108-11.
15. THE MANUFACTURER SHALL FURNISH A CERTIFIED TEST REPORT SHOWING THAT THE MANUFACTURER'S PRODUCT SATISFACTORILY CONFORMS TO THIS STANDARD.

NOTES:

1. REMOVE BURRS, SLIVERS AND BREAK SHARP EDGES.
2. DIMENSIONS ARE IN INCHES.
3. UNLESS OTHERWISE SPECIFIED, TOLERANCES: 2 PLACE DECIMAL $\pm .03$, 3 PLACE DECIMAL $\pm .010$.
4. MIL IDENTIFICATION (MS14108-...) AND OTHER MARKING SHALL BE PERMANENT. METHOD OF APPLICATION IS OPTIONAL, AS LONG AS THE IDENTIFICATION IS NOT DESTROYED THROUGH NORMAL USE. MANUFACTURER'S NAME AND PART NUMBER MAY APPEAR ELSEWHERE ON THE ITEM SUPPLIED.
5. SUFFIX "A" - FOLLOWING DASH NUMBER (-5 THRU -10) DESIGNATES SPACER STOP FEATURE.
SUFFIX "ACP" - FOLLOWING DASH NUMBER (-5 THRU -10) DESIGNATES SELF POSITIONING AND STOP FEATURE.
SUFFIX "MCP" - FOLLOWING DASH NUMBER (-5 THRU -10) DESIGNATES SELF POSITIONING FEATURE.
SUFFIX "C" - FOLLOWING DASH NUMBER (-11 THRU -22) DESIGNATES CORROSION RESISTANT STEEL MATERIAL.
6. EXAMPLE PART NUMBER:
MS14108-5A
STOP FEATURE
MS14108-15C
CORROSION RESISTANT STEEL MATERIAL
7. REFERENCED DOCUMENTS SHALL BE OF THE ISSUE IN EFFECT ON DATE OF INVITATIONS FOR BIDS OR REQUEST FOR PROPOSAL, EXCEPT THAT REFERENCED ADOPTED INDUSTRY DOCUMENTS SHALL GIVE THE DATE OF THE ISSUE ADOPTED.
8. FOR DESIGN FEATURE PURPOSES, THIS STANDARD TAKES PRECEDENCE OVER PROCUREMENT DOCUMENTS REFERENCED HEREIN.
9. THE .09 INCH DIAMETER SURFACE HOLES DO NOT AFFECT THE FUNCTION OF THE PART, AND THE NUMBER OF HOLES MAY VARY FROM THE DESIGNATED SIX (6).

APPROVED 25 JUNE 1971 REVISED 1 FOR CHANGES SEE SHEETS 1 THRU 6

P.A. NAVY - AS Other Cust ARMY - 85 USAF - 11	TITLE PARTS, POSITION SELF-LOCKING, USE IN AUTOMATIC ELECTRONIC EQUIPMENT	MILITARY STANDARD MS 14108
PROCUREMENT SPECIFICATION	SUPERSEDES:	SHEET OF

"Review/Date information is current as of the date of this document. For future coordination of changes to this document, draft circulation should be based on the information in the current DODISS."

This military standard is approved for use by all Departments & Agencies of the Department of Defense. Selection for all new engineering and design applications and for repetitive use shall be made from this document.