

This military standard is approved for use by the Naval Elec. Systems Cmd.
Department of the Navy and is available for use by all Departments and
Agencies of the Department of Defense.

P.A. Navy - EC Other Cust		INTERNATIONAL INTEREST	TITLE HOUSING, CONNECTOR, CASTING AND MACHINERY	MILITARY STANDARD MS14062(NAVY)
Procurement Specifications NONE		SUPERSEDES: Drawing 2826483, Code Ident 10001		PAGE 1 OF 3

FED. SUP CLASS
5935

SECTION A-A

NO BURR OR SHARP EDGE
SEE DETAIL B

SEE NOTE 3

101° CSK X .169 DIA
99° C-HOLES FS

2-B-HOLES
.133 DIA
.123 DIA

2-C-HOLES FS
.096 DIA
.092

2-D-HOLES
.0995 DIA X .0375 .156 MIN DEEP
.0545 .0455 2 PLACES
.010 R MAX 4 PLACES

2-E-HOLES
.030 R MAX 2 PLACES
.088 2 PLACES
.257 .253

2-F-HOLES
.015' MAX 2 PLACES

2-G-HOLES
.030 R MAX 2 PLACES
.050 R MAX 2 PLACES

2-H-HOLES
.100 R .070 R 2 PLACES
.195 MAX
.03 R MAX 2 PLACES
.05 R MAX 2 PLACES

2-I-HOLES
.06 R MAX 2 PLACES
.16 R .14 2 PLACES
.370 .360
2.37 2.35
.06 R MAX 2 PLACES
.100 R .070 R 2 PLACES
.195 MAX
.03 R MAX 2 PLACES
.05 R MAX 2 PLACES
2.200 BSC
1.81 1.69
.22 MAX
.126 .114
.060

2-J-HOLES
.096 DIA
.092
101° CSK X .169 DIA
99° C-HOLES FS
.133 DIA
.123 DIA
2-B-HOLES
2.143 2.137
1.895 1.885
1.286 1.276
1.670 1.530
1.250
1.374 R
.026 REF
.010 R
.005 R
.17 .15
.195 .193
.250 REF
.005 R MAX
.562 BSC B
.11 H .002
.16 .14
.110 .100
.225 .215
.212 .207

2-K-HOLES
.092 2 PLACES
.088 2 PLACES
.257 .253
.015' MAX 2 PLACES
.030 R MAX 2 PLACES
.050 R MAX 2 PLACES
.100 R .070 R 2 PLACES
.195 MAX
.03 R MAX 2 PLACES
.05 R MAX 2 PLACES
2.200 BSC
1.81 1.69
.22 MAX
.126 .114
.060

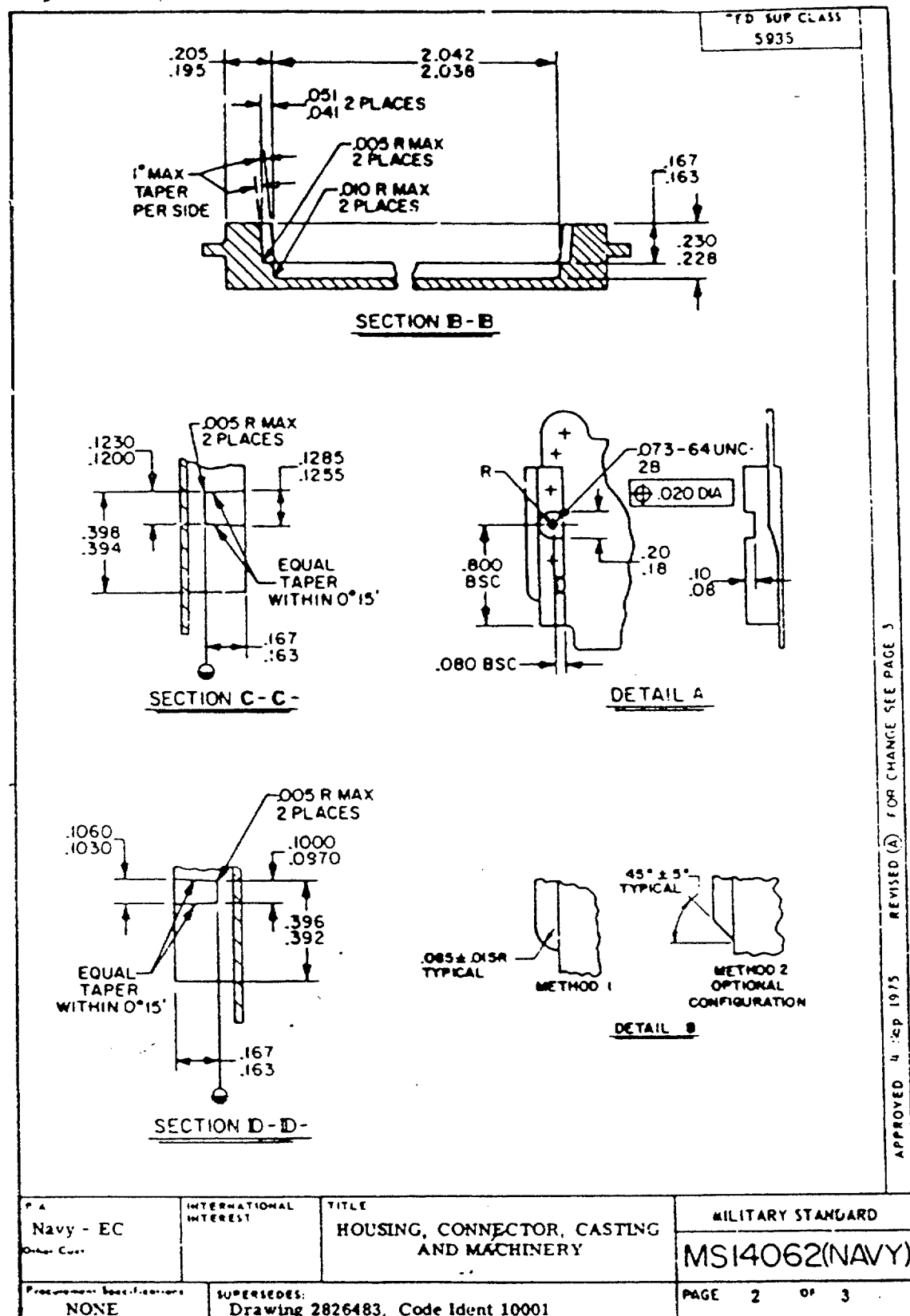
2-L-HOLES
.096 DIA
.092
101° CSK X .169 DIA
99° C-HOLES FS
.133 DIA
.123 DIA
2-B-HOLES
2.143 2.137
1.895 1.885
1.286 1.276
1.670 1.530
1.250
1.374 R
.026 REF
.010 R
.005 R
.17 .15
.195 .193
.250 REF
.005 R MAX
.562 BSC B
.11 H .002
.16 .14
.110 .100
.225 .215
.212 .207

APPROVED 4 Sep 1975

REVISED (A) 16 Apr 76 (B) 16 NOV 79

(B) CANCELED AFTER 15 NOVEMBER 1979
USE MIL-C-28754/49

This military standard is approved for use by the Naval Elec. Systems Cmd. Department of the Navy and is available for use by all Departments and Agencies of the Department of Defense.



APPROVED 4 SEP 1975 REVISED (A) FOR CHANGE SEE PAGE 3

FED. SUP CLASS
5835

DESIGN STANDARD FOR USE WITH MIL-C-28754/17 (A)

NOTES:


1. Dimensions are in inches.
2. Material: ASTM B85 alloy 8C 84A or QQ-A-591 alloy 380
3. Marking and finish: Per table L
4. Cast finish 125.
5. Unless otherwise specified, corner radii .020 R maximum and corner fillets .020 R maximum.
6.  Two surfaces to be in line within .002.
7. For design feature purposes, this standard takes precedence over procurement documents referenced herein.

TABLE L. Finish and marking.

Type	Finish	Marking	With detail A
A	Anodize per MIL-A-8625, type 2, dyed black.	Mark characters .06 inch high with white epoxy ink per MIL-C-28754	No
B	Anodize per MIL-A-8625, type 2, dyed red. Coat detail E per MIL-C-5541 class 3, type and grade optional.	Mark characters .06 inch high with black epoxy ink per MIL-C-28754	Yes
C	Anodize per MIL-A-8625, type 2, dyed black. Coat detail E per MIL-C-5541 class 3, type and grade optional.	Mark characters .06 inch high with white epoxy ink per MIL-C-28754	Yes

APPROVED 4 Sep 1975 REVISED (A) FOR CHANGE SEE PAGE 3

P. A. Navy - EC Other Com.	INTERNATIONAL INTEREST	TITLE HOUSING, CONNECTOR, CASTING AND MACHINERY	MILITARY STANDARD
			MS14062(NAVY)
Procurement Specifications NONE	SUPERSEDES Drawing 2826483, Code Ident 10001	PAGE 3 OF 3	