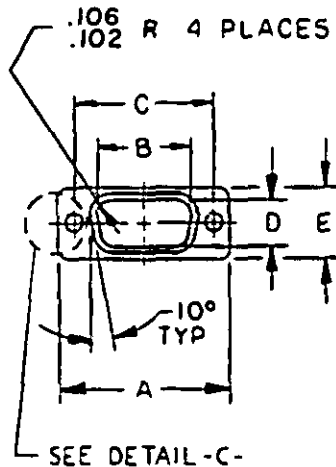
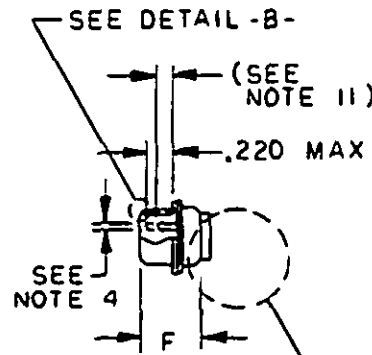
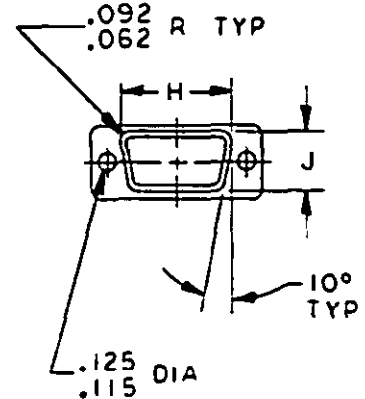
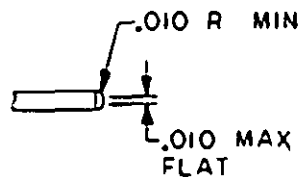
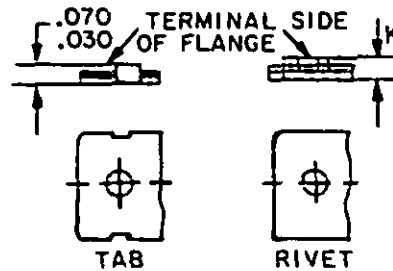
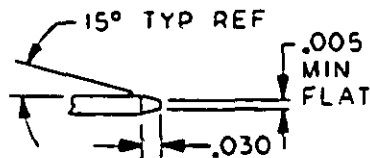
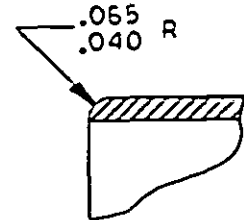
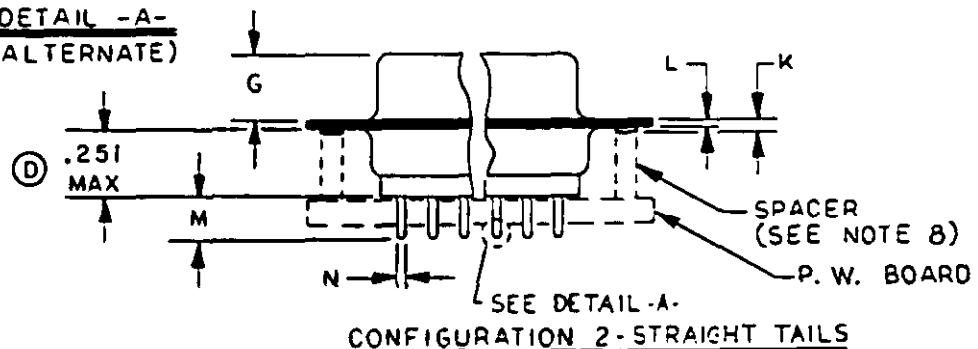


FED. SUP CLASS  
5935User activities: Army - AT  
Navy - MC, CG, SH  
Air Force -Review activities: Army - MJ  
Navy - AS  
Air Force - 11, 99  
DLA-ES

This military standard is approved for use by all Departments and Agencies of the Department of Defense. Selection for all new engineering and design applications and for repetitive use shall be made from this document when applicable.

ENGAGING VIEWCONFIGURATION 1TERMINAL VIEWDETAIL -A-DETAIL -C-DETAIL -A- (ALTERNATE)ALTERNATE METHODS OF SECURING SHELL HALVESDETAIL -B-CONFIGURATION 2-STRAIGHT TAILS

① DENOTES CHANGE

P.A NAVY-EC	International interest	TITLE CONNECTORS, ELECTRIC, RECTANGULAR MINIATURE, POLARIZED SHELL, RACK AND PANEL, SHELL, PLUG, PIN CONTACTS, PRINTED WIRING BOARD TERMINATION TYPES	MILITARY STANDARD
Other Cust AF-85 ARMY-CR			MS14059
Procurement Specification MIL-C-24308		SUPERSEDES:	PAGE 1 OF 6

DD FORM 1 MAY 73 672  
AMSC N/A

(Coordinated) PREVIOUS EDITIONS OF THIS FORM ARE OBSOLETE

DISTRIBUTION STATEMENT A. Approved for public release; distribution is unlimited.

5935-3608-02

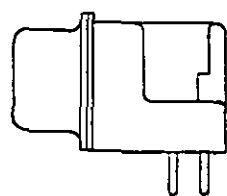
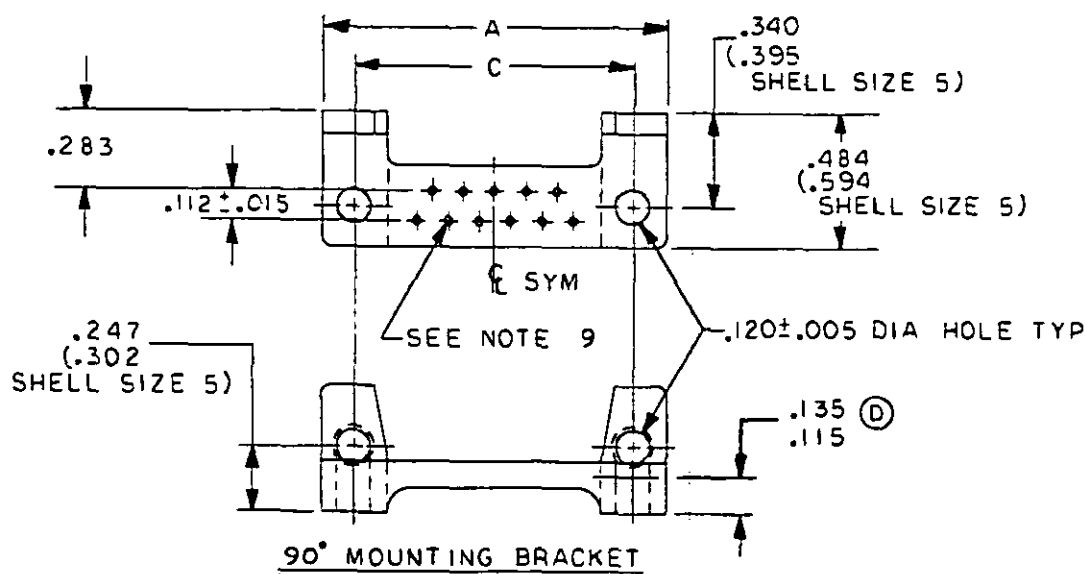
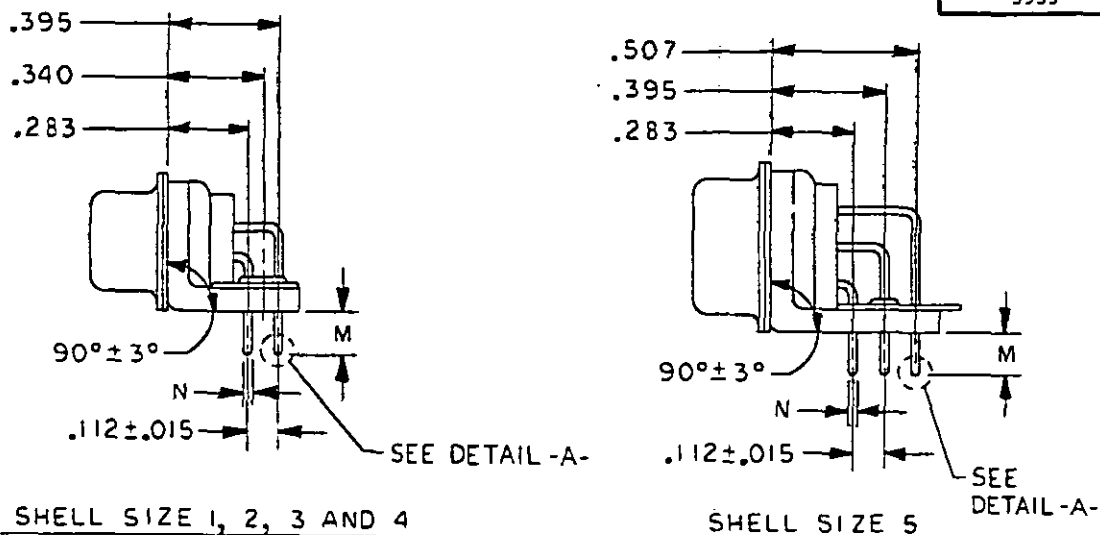
APPROVED 13 JUN 73 REVISED ① 12 OCT 73 ② 13 NOV 78 ③ 5 DEC 83 ④ 26 JAN 89

User activities: Army - AT  
Navy - MC, SH  
Air Force -

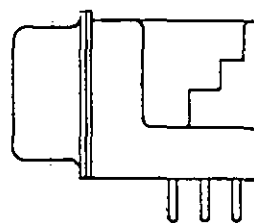
Review activities: Army - MI  
Navy - AS  
Air Force - 11, 99  
DLA-ES

This military standard is approved for use by all Departments and Agencies of the Department of Defense. Selection for all new engineering and design applications and for repetitive use shall be made from this document when applicable.

FED. SUP CLASS  
5935



SHELL SIZE 1, 2, 3 AND 4



SHELL SIZE 5

ALTERNATE CONFIGURATION OF REAR INSERT & MOUNTING BRACKET

CONFIGURATION 3 - RIGHT ANGLE TAILS

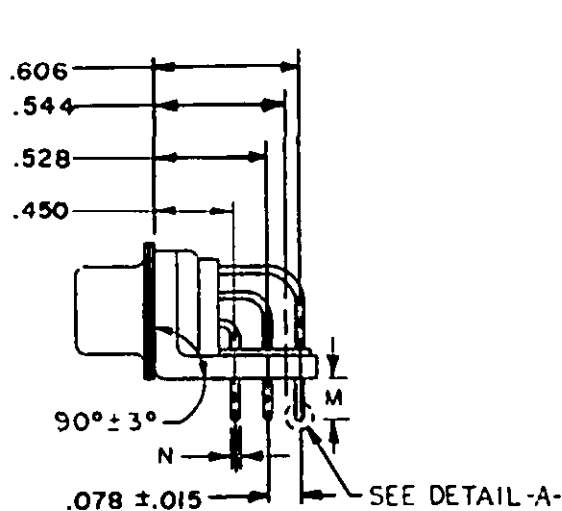
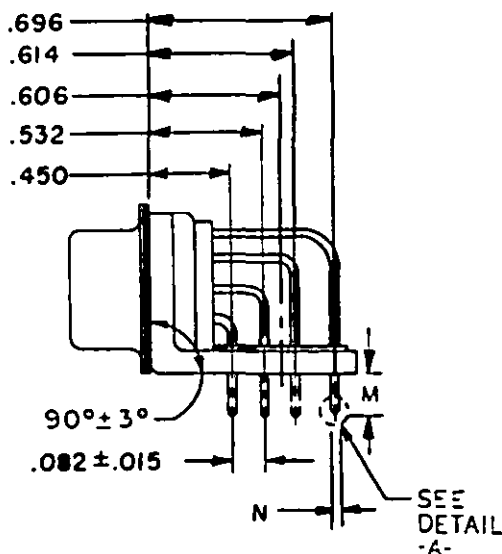
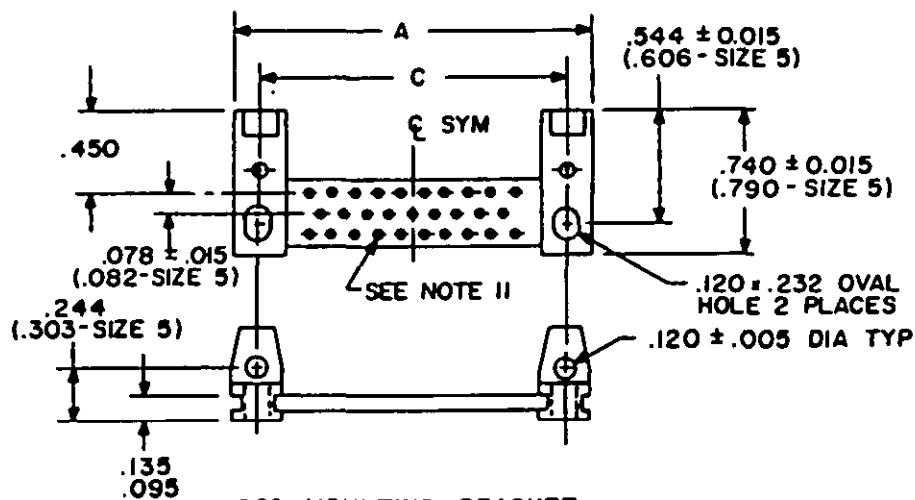
APPROVED 13 JUN 73 REVISED (D) FOR CHANGES SEE PAGES 1, 2, 3, AND 5

P.A NAVY-EC  Other Cust AF-85 ARMY-CR	International Interest	TITLE CONNECTORS, ELECTRIC, RECTANGULAR MINIATURE, POLARIZED SHELL, RACK AND PANEL, SHELL, PLUG, PIN CONTACTS, PRINTED WIRING BOARD TERMINATION TYPES	MILITARY STANDARD
Procurement Specification MIL-C-24308	SUPERSEDES:	MSI4059	
		PAGE 2 OF 6	

FED. SUP CLASS  
5935User activities: Army - ME  
Navy - MC, CG, SH  
Air Force -Review activities: Army - MI  
Navy - AS  
Air Force - 11, 99

This military standard is approved for use by all Departments and Agencies of the Department of Defense. Selection for all new engineering and design applications and for repetitive use shall be made from this document when applicable.

DIA-ES

SHELL SIZE 1, 2, 3 AND 4SHELL SIZE 590° MOUNTING BRACKETCONFIGURATION 4 - RIGHT ANGLE TAILS

P.A NAVY-EC

Other Cust  
AF-85  
ARMY-CRProcurement Specification  
MIL-C-24308International  
InterestTITLE CONNECTORS, ELECTRIC, RECTANGULAR  
MINIATURE, POLARIZED SHELL, RACK AND PANEL,  
SHELL, PLUG, PIN CONTACTS, PRINTED WIRING  
BOARD TERMINATION TYPES

SUPERSEDES:

MILITARY STANDARD

MS14059

PAGE 3 OF 6

ARMY - AT  
NAVY - MC, CG, SH  
Air Force -  
User activities:

ARMY - MI  
NAVY - AS  
Air Force - 11, 99  
DLA-ES  
Review activities:

This military standard is approved for use by all Departments and Agencies of the Department of Defense. Selection for all new engineering and design applications and for repetitive use shall be made from this document when applicable.

TABLE I. Dimensions and configuration.

MS no.	Tails	Shell size	A	B	C	D	E	F	G	H	J	K	L
114059													
-61, -67			1.228	.671	.989	.334	.509	.432	.238	.769	.432	.060	.040
-1, -7	Straight	1	(31.19)	(17.04)	(25.12)	(8.48)	(12.93)	(10.97)	(6.05)	(19.53)	(10.97)	(1.52)	(1.02)
-13, -19			1.198	.661	.979	.324	.479	.412	.229	.749	.412	.035	.020
-25, -31			(30.43)	(16.79)	(24.87)	(8.23)	(12.17)	(10.46)	(5.82)	(19.02)	(10.46)	(0.89)	(0.51)
-37, -43	Right angle												
-49, -55													
-73													
-62, -68													
-2, -8	Straight	2	1.556	.999	1.317	.334	.509	.432	.238	1.093	.432	.060	.040
-14, -20			(39.52)	(25.37)	(33.45)	(8.48)	(12.93)	(11.15)	(6.05)	(27.76)	(10.97)	(1.52)	(1.02)
-26, -32			1.526	.989	1.307	.324	.479	.412	.299	1.073	.412	.035	.020
-38, -44	Right angle		(38.76)	(25.12)	(33.20)	(8.23)	(12.17)	(10.46)	(5.82)	(27.25)	(10.46)	(0.89)	(0.51)
-50, -56													
-74													
-63, -69													
-3, -9	Straight	3	2.103	1.539	1.857	.316	.509	.439	.248	1.635	.432	.070	.049
-15, -21			(53.42)	(39.09)	(47.17)	(8.48)	(12.93)	(11.07)	(5.99)	(41.53)	(10.97)	(1.78)	(1.24)
-75			2.073	1.529	1.847	.324	.479	.416	.224	1.615	.412	.050	.029
-27, -33			(52.65)	(38.84)	(46.91)	(8.23)	(12.17)	(10.57)	(5.69)	(41.02)	(10.46)	(1.27)	(0.74)
-39, -45	Right angle												
-51, -57													
-64, -70													
-4, -10	Straight	4	2.744	2.187	2.505	.334	.509	.436	.236	2.282	.432	.070	.049
-16, -22			(69.70)	(55.55)	(63.63)	(8.48)	(12.93)	(11.07)	(5.99)	(57.96)	(10.97)	(1.52)	(1.02)
-28, -34			2.714	2.177	2.495	.324	.479	.416	.224	2.262	.412	.050	.029
-40, -46	Right angle		(68.94)	(55.30)	(63.37)	(8.23)	(12.17)	(10.57)	(5.69)	(57.45)	(10.46)	(1.27)	(0.74)
-52, -58													
-76													
-65, -71													
-5, -11	Straight	5	2.650	2.084	2.411	.446	.620	.436	.236	2.188	.544	.070	.049
-17, -23			(67.31)	(52.93)	(61.24)	(11.33)	(15.75)	(11.07)	(5.99)	(55.58)	(13.82)	(1.78)	(1.24)
-29, -35			2.620	2.074	2.401	.436	.590	.416	.224	2.168	.524	.050	.029
-41, -47	Right angle		(66.55)	(52.68)	(60.99)	(11.07)	(14.00)	(10.57)	(5.69)	(55.07)	(13.31)	(1.27)	(0.74)
-53, -59													
-77													

(D)

P.A NAVY-EC

Other Cust  
AF-85  
ARMY-CRProcurement Specification  
MIL-C-24308International  
InterestTITLE CONNECTORS, ELECTRIC, RECTANGULAR  
MINIATURE, POLARIZED SHELL, RACK AND PANEL,  
SHELL, PLUG, PIN CONTACTS, PRINTED WIRING  
BOARD TERMINATION TYPES

SUPERSEDES:

MILITARY STANDARD

MS14059

PAGE 4 OF 6

APPROVED 13 JUN 73 REVISED (D) FOR CHANGES SEE PAGES 1, 2, 3, AND 5

FED. SUP CLASS  
5935

TABLE II. Application data and dimensions.

MS no. 14059	Applicable configurations	Applicable board thickness	Nominal pin diameter	M	N
-1 thru -5	1 and 2	.094 (2.39 mm)	.030 (0.76 mm)	.185 (4.70 mm) .130 (3.30 mm)	.033 (0.84 mm) .027 (0.69 mm)
-7 thru -11	1 and 2	.125 (3.18 mm)	.030 (0.76 mm)	.210 (5.33 mm) .155 (3.94 mm)	.033 (0.84 mm) .027 (0.69 mm)
-13 thru -17	1 and 2	.094 (2.39 mm)	.040 (1.02 mm)	.185 (4.70 mm) .130 (3.30 mm)	.043 (1.09 mm) .037 (0.94 mm)
-19 thru -23	1 and 2	.125 (3.18 mm)	.030 (0.76 mm)	.210 (5.33 mm) .155 (3.94 mm)	.043 (1.09 mm) .037 (0.94 mm)
-25 thru -29	1 and 3	.062 (1.57 mm)	.030 (0.76 mm)	.154 (3.91 mm) .099 (2.51 mm)	.033 (0.84 mm) .027 (0.69 mm)
-31 thru -35	1 and 3	.094 (2.39 mm)	.030 (0.76 mm)	.185 (4.70 mm) .130 (3.30 mm)	.033 (0.84 mm) .027 (0.69 mm)
-37 thru -41	1 and 3	.062 (1.57 mm)	.040 (1.02 mm)	.154 (3.91 mm) .099 (2.51 mm)	.043 (1.09 mm) .037 (0.94 mm)
-43 thru -47	1 and 3	.094 (2.39 mm)	.040 (1.02 mm)	.185 (4.70 mm) .130 (3.30 mm)	.043 (1.09 mm) .037 (0.94 mm)
-49 thru -53	1 and 3	.125 (3.18 mm)	.030 (0.76 mm)	.210 (5.33 mm) .155 (3.94 mm)	.033 (0.84 mm) .027 (0.69 mm)
-55 thru -59	1 and 3	.125 (3.18 mm)	.040 (1.02 mm)	.210 (5.33 mm) .155 (3.94 mm)	.043 (1.09 mm) .037 (0.94 mm)
-61 thru -65	1 and 2	.094 (2.39 mm)	.020 (0.51 mm)	.185 (4.70 mm) .130 (3.30 mm)	.023 (0.58 mm) .017 (0.43 mm)
-67 thru -71	1 and 2	.125 (3.18 mm)	.020 (0.51 mm)	.320 (8.13 mm) .275 (6.99 mm)	.023 (0.58 mm) .017 (0.43 mm)
-73 thru -77	1 and 4	.062 (1.57 mm)	.020 (0.51 mm)	.154 (3.91 mm) .099 (2.51 mm)	.023 (0.58 mm) .017 (0.43 mm)

User activities: Army - AT  
Navy - MC, CG, SH  
Air Force -Review activities: Army - ME  
Navy - AS  
Air Force - 11, 99  
NA-ES

This military standard is approved for use by all Departments and Agencies of the Department of Defense. Selection for all new engineering and design applications and for repetitive use shall be made from this document when applicable.

P.A. NAVY-EC

Other Cust  
AF-85  
ARMY-CRProcurement Specification  
MIL-C-24308International  
InterestTITLE CONNECTORS, ELECTRIC, RECTANGULAR  
MINIATURE, POLARIZED SHELL, RACK AND PANEL,  
SHELL, PLUG, PIN CONTACTS, PRINTED WIRING  
BOARD TERMINATION TYPES

SUPERSEDES:

MILITARY STANDARD

MS14059

PAGE 5 OF 6

DD FORM 672 (Coordinated) PREVIOUS EDITIONS OF THIS FORM ARE OBSOLETE  
1 MAY 73

APPROVED 13 JUN 73 REVISED (D) FOR CHANGES SEE PAGES 1, 2, 3, AND 5

FED. SUP CLASS  
5935User activities: Army - AT  
Navy - MC, CG, SH  
Air ForceReview activities: Army - MI  
Navy - AS  
Air Force - 11, 99  
DLA-ES

This military standard is approved for use by all Departments and Agencies of the Department of Defense. Selection for all new engineering and design applications and for repetitive use shall be made from this document when applicable.

Inches	mm	Inches	mm	Inches	mm
.005	0.13	.104	2.64	.247	6.27
.010	0.25	.106	2.69	.251	6.38
.015	0.38	.112	2.84	.283	7.19
.030	0.76	.115	2.92	.302	7.67
.040	1.02	.120	3.05	.340	8.64
.062	1.57	.125	3.18	.395	10.03
.065	1.65	.135	3.43	.484	12.29
.070	1.78	.220	5.59	.507	12.88
.092	2.34			.594	15.09

## NOTES:

1. Dimensions are in inches.
2. Millimeters are in parentheses.
3. Metric equivalents are given for general information only.
4. Pin diameter .041/.039 (1.04/0.99 mm) for arrangements MS18273-1, MS18274-1, MS18275-1, MS18276-1 and MS18277-1.
5. Copyright notice. All information disclosed in this military standard which is or may be copyrighted by ITT Cannon Electric is reproduced herein with the expressed permission of the copyright owner.
6. The 90° bracket shall be one piece flame resistant glass-filled nylon, polyester or two piece metal and nylon of which the metal pieces shall be coated with a material in accordance with MIL-I-46058.
7. The 90° brackets shall be furnished as an integral part of the connector assembly.
8. Spacers will be supplied with connectors (not attached to the connector).
9. Layout shown for reference only to locate  $C_L$  of hole pattern. See applicable insert arrangement.
10. Requirement for contact retention shall be 3.5 lbs. for right angle printed circuit board mount connectors. Connectors may be fastened to board for test.
11. Dimensions are .150 (3.81 mm) minimum full pin diameter extension (sizes 3 through 6) and .159 (4.04 mm) minimum full pin diameter extension (sizes 1 and 2).
12. Unless otherwise specified, tolerance is  $\pm 0.010$  inch (0.25 mm).
13. In the event of a conflict between the text of this standard and the references cited herein, the text of this standard shall take precedence.
14. Referenced Government documents of the issue listed in that issue of the Department of Defense Index of Specifications and Standards (DODISS) specified in the solicitation form a part of this standard to the extent specified herein.

REVISED (D) FOR CHANGES SEE PAGES 1, 2, 3, AND 5

APPROVED 13 JUN 73

P.A. NAVY-EC	International interest	TITLE CONNECTORS, ELECTRIC, RECTANGULAR MINIATURE, POLARIZED SHELL, RACK AND PANEL, SHELL, PLUG, PIN CONTACTS, PRINTED WIRING BOARD TERMINATION TYPES	MILITARY STANDARD
Other Cust AF-85 ARMY-CR			MS14059
Procurement Specification MIL-C-24308	SUPERSEDES:		PAGE 6 OF 6

DD FORM 672 (Coordinated) PREVIOUS EDITIONS OF THIS FORM ARE OBSOLETE  
1 MAY 73