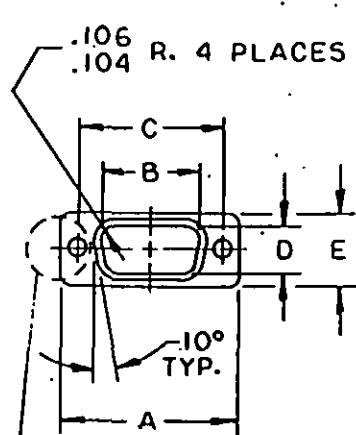
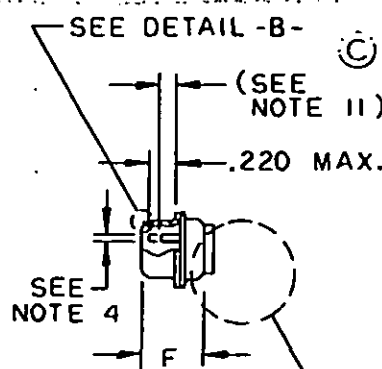
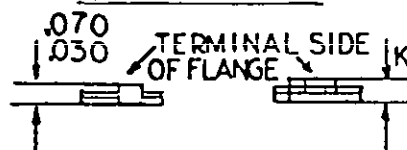
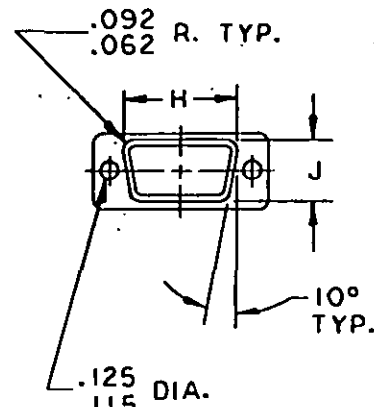
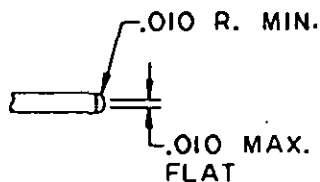
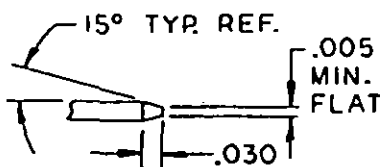
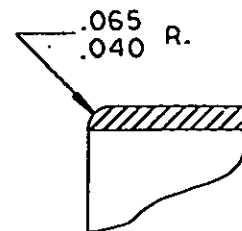
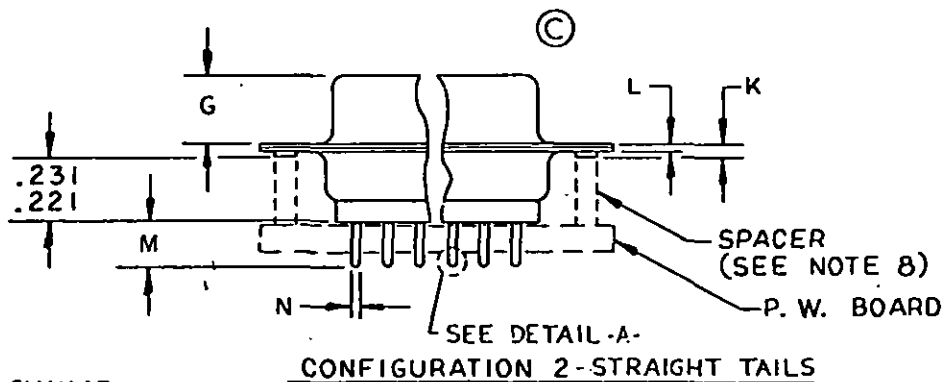


FED. SUP CLASS  
5935User activities: Army - AT  
Navy - MC, CG, SH  
Air Force -Review activities: Army - MI  
Navy - AS  
Air Force - 11,99  
DLA - ES

This military standard is approved for use by all Departments and Agencies of the Department of Defense. Selection for all new engineering and design applications and for repetitive use shall be made from this document when applicable.



SEE DETAIL - C -

ENGAGING VIEWSEE CONFIGURATIONS  
2 AND 3CONFIGURATION 1TAB RIVET  
DETAIL - C -TERMINAL VIEWDETAIL - A -DETAIL - A -  
(ALTERNATE)ALTERNATE METHODS  
OF SECURING SHELL HALVESDETAIL - B -

© DENOTES CHANGE

P. NAVY - EC

International  
InterestOther Cust AF-85  
ARMY - CRTITLE CONNECTORS, ELECTRIC, RECTANGULAR  
MINIATURE, POLARIZED SHELL, RACK AND  
PANEL, SHELL, PLUG, PIN CONTACTS,  
PRINTED WIRING BOARD TERMINATION  
TYPES

MILITARY STANDARD

MS 14059

Procurement Specification  
MIL-C-24308

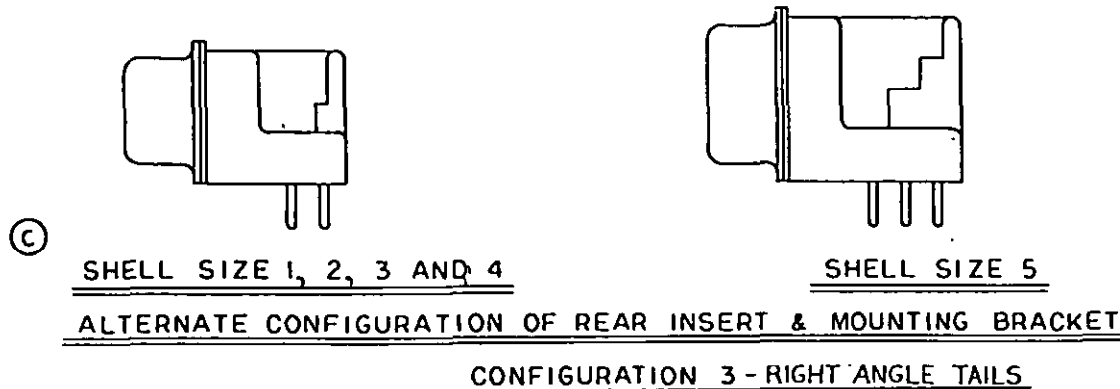
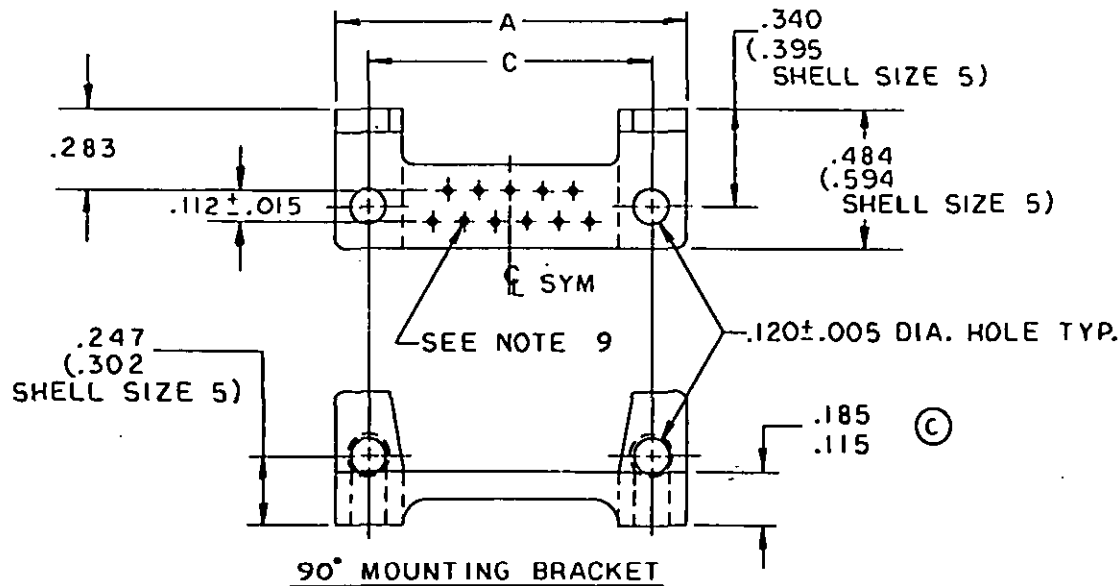
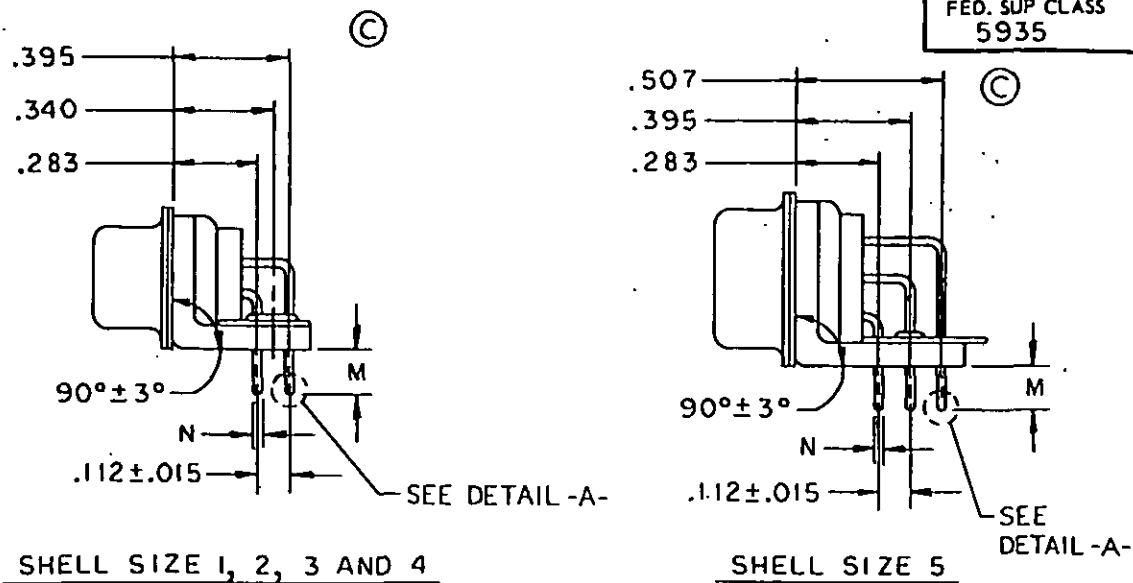
SUPERSEDES:

PAGE 1 OF 5

User activities: ARMY - AT  
Navy - MC, CG, SH  
Air Force -

Review activities: ARMY - MI  
Navy - AS  
Air Force - 11,99  
DLA-ES

This military standard is approved for use by all Departments and Agencies of the Department of Defense. Selection for all new engineering and design applications and for repetitive use shall be made from this document when applicable.



APPROVED 13 June 1973 REVISED (C) For changes see pages 1 thru 5

P.ANAVY-EC	International Interest	TITLE CONNECTORS, ELECTRIC, RECTANGULAR MINIATURE, POLARIZED SHELL, RACK AND PANEL, SHELL, PLUG, PIN CONTACTS, PRINTED WIRING BOARD TERMINATION TYPES	MILITARY STANDARD
Other Cust AF-85 ARMY-CR			MS 14059
Procurement Specification MIL-C-24308		SUPERSEDES:	PAGE 2 OF 5

This military standard is approved for use by all Departments and Agencies of the Department of Defense. Selection for all new engineering and design applications and for repetitive use shall be made from this document when applicable.

Review activities: Army - MI  
Navy - AS  
Air Force - 11,99  
DLA-ES

User activities: Army - AT  
Navy - MC, CG, SH  
Air Force -

TABLE I. Dimensions and configurations.																	FED. SUP CLASS 5935								
MS No. 14059	SHELL SIZE	A	B	C	D	E	F	G	H	J	K	L													
-1, -7, -13, -19, -25, -31, -37, -43, -49, -55	1	1.228 (31.19) 1.198 (30.43)	.671 (17.04) .661 (16.79)	.989 (25.12) .979 (24.87)	.334 (8.48) .324 (8.23)	.509 (12.93) .479 (12.17)	.432 (10.97) .412 (10.46)	.238 (6.05) .229 (5.82)	.769 (19.53) .749 (19.02)	.432 (10.97) .412 (10.46)	.060 (1.52) .035 (.89)	.040 (1.02) .020 (.51)													
-2, -8, -14, -20, -26, -32, -38, -44, -50, -56	2	1.556 (39.52) 1.526 (38.76)	.999 (25.37) .989 (25.12)	1.317 (33.45) 1.307 (33.20)	.334 (8.48) .324 (8.23)	.509 (12.93) .479 (12.17)	.432 (10.97) .412 (10.46)	.238 (6.05) .229 (5.82)	1.093 (27.76) 1.073 (27.25)	.432 (10.97) .412 (10.46)	.060 (1.52) .035 (.89)	.040 (1.02) .020 (.51)													
-3, -9, -15, -21, -27, -33, -39, -45, -51, -57	3	2.103 (53.42) 2.073 (52.65)	1.539 (39.09) 1.529 (38.84)	1.857 (47.17) 1.847 (46.91)	.334 (8.48) .324 (8.23)	.509 (12.93) .479 (12.17)	.436 (11.07) .416 (10.57)	.236 (5.99) .224 (5.69)	1.635 (41.53) 1.615 (41.02)	.432 (10.97) .412 (10.46)	.070 (1.78) .050 (1.27)	.049 (1.24) .029 (.74)													
-4, -10, -16, -22, -28, -34, -40, -46, -52, -58	4	2.744 (69.70) 2.714 (68.94)	2.187 (55.55) 2.177 (55.30)	2.505 (63.63) 2.495 (63.37)	.334 (8.48) .324 (8.23)	.509 (12.93) .479 (12.17)	.436 (11.07) .416 (10.57)	.236 (5.99) .224 (5.69)	2.282 (57.96) 2.262 (57.45)	.432 (10.97) .412 (10.46)	.070 (1.78) .050 (1.27)	.049 (1.24) .029 (.74)													
-5, -11, -17, -23, -29, -35, -41, -47, -53, -59	5	2.650 (67.31) 2.620 (66.55)	2.084 (52.93) 2.074 (52.68)	2.411 (61.24) 2.401 (60.99)	.446 (11.33) .436 (11.07)	.620 (15.75) .590 (14.99)	.436 (11.07) .416 (10.57)	.236 (5.99) .224 (5.69)	2.188 (55.58) 2.168 (55.07)	.544 (13.82) .524 (13.31)	.070 (1.78) .050 (1.27)	.049 (1.24) .029 (.74)													
P.A NAVY-EC Other Cust AF-85 ARMY-CR												International Interest		TITLE CONNECTORS, ELECTRIC, RECTANGULAR MINIATURE, POLARIZED SHELL, RACK AND PANEL, SHELL, PLUG, PIN CONTACTS, PRINTED WIRING BOARD TERMINATION TYPES										MILITARY STANDARD	
MS 14059																									
PROCUREMENT SPECIFICATION MIL-C-24308														SUPERSEDES:										PAGE 3 OF 5	
APPROVED 13 June 1973												REVISED (C)		For changes see pages 1 thru 5											

This military standard is approved for use by all Departments and Agencies of the Department of Defense. Selection for all new engineering and design applications and for repetitive use shall be made from this document when applicable.

Review activities: Army - MI  
Navy - AS  
Air Force - 11, 99  
DLA-ES

User activities: Army - AT  
Navy - MC, CG, SH  
Air Force -

P.A. NAVY-EC Other Cust AF-85 ARMY-CR	International Interest	TITLE CONNECTORS, ELECTRIC, RECTANGULAR, MINIATURE, POLARIZED SHELL, RACK AND PANEL, SHELL, PLUG, PIN CONTACTS, PRINTED WIRING BOARD TERMINATION TYPES	MILITARY STANDARD  MS 14059
Procurement Specification MIL-C-24308	SUPERSEDES:	PAGE 4 OF 5	

(C) TABLE II. Application data and dimensions.

MS No. 14059	Applicable configurations	Applicable board thickness	Nominal pin diameter	M	N
-1 thru -5	1 and 2	.094 (2.39 mm)	.030 (.76 mm)	.185 (4.70 mm) .130 (3.30 mm)	.033 (.84 mm) .027 (.69 mm)
-7 thru -11	1 and 2	.125 (3.18 mm)	.030 (.76 mm)	.210 (5.33 mm) .155 (3.94 mm)	.033 (.84 mm) .027 (.69 mm)
-13 thru -17	1 and 2	.094 (2.39 mm)	.040 (1.02 mm)	.185 (4.70 mm) .130 (3.30 mm)	.043 (1.09 mm) .037 (.94 mm)
-19 thru -23	1 and 2	.125 (3.18 mm)	.040 (1.02 mm)	.210 (5.33 mm) .155 (3.94 mm)	.043 (1.09 mm) .037 (.94 mm)
-25 thru -29	1 and 3	.062 (1.57 mm)	.030 (.76 mm)	.154 (3.91 mm) .099 (2.51 mm)	.033 (.84 mm) .027 (.69 mm)
-31 thru -35	1 and 3	.094 (2.39 mm)	.030 (.76 mm)	.185 (4.70 mm) .130 (3.30 mm)	.033 (.84 mm) .027 (.69 mm)
-37 thru -41	1 and 3	.062 (1.57 mm)	.040 (1.02 mm)	.154 (3.91 mm) .099 (2.51 mm)	.043 (1.09 mm) .037 (.94 mm)
-43 thru -47	1 and 3	.094 (2.39 mm)	.040 (1.02 mm)	.185 (4.70 mm) .130 (3.30 mm)	.043 (1.09 mm) .037 (.94 mm)
-49 thru -53	1 and 3	.125 (3.18 mm)	.030 (.76 mm)	.210 (5.33 mm) .155 (3.94 mm)	.033 (.84 mm) .027 (.69 mm)
-55 thru -59	1 and 3	.125 (3.18 mm)	.040 (1.02 mm)	.210 (5.33 mm) .155 (3.94 mm)	.043 (1.09 mm) .037 (.94 mm)

FED. SUP CLASS  
5935

APPROVED 13 June 1973 REVISED (C) For changes see pages 1 thru 5

FED. SUP CLASS  
5935

C

INCHES	MM	INCHES	MM	INCHES	MM	INCHES	MM	INCHES	MM
.005	.13	.065	1.65	.115	2.92	.221	5.61	.395	10.03
.010	.25	.070	1.78	.120	3.05	.231	5.87	.484	12.29
.015	.38	.092	2.34	.125	3.18	.247	6.27	.507	12.88
.030	.76	.102	2.59	.150	3.81	.283	7.19	.594	15.09
.040	1.02	.106	2.69	.185	4.70	.302	7.67		
.062	1.57	.112	2.84	.220	5.59	.340	8.64		

## NOTES:

1. Dimensions are in inches.
2. Metric equivalents are in parentheses.
3. Metric equivalents are given for general information only and are based upon 1.00 inch = 25.4 mm.
4. Pin diameter .041/.039 (1.04/.99 mm) for arrangements MS 18273-1, MS 18274-1, MS 18275-1, MS 18276-1 and MS 18277-1.
5. Copyright notice. All information disclosed in this military standard which is or may be copyrighted by ITT Cannon Electric is reproduced herein with the express permission of the owner.
6. The 90° bracket shall be one piece flame resistant glass-filled nylon, polyester or two piece metal and nylon of which the metal pieces shall be coated with a material in accordance with MIL-I-46058.
7. The 90° brackets shall be furnished as an integral part of the connector assembly.
8. Spacers are required for mounting but are not furnished.
9. Layout shown for reference only to locate  $C_L$  of hole pattern. See applicable insert pattern MS.
10. Requirement for contact retention shall be 3.5 lbs. for right angle printed circuit board mount connectors. Connectors may be fastened to board for test.
11. Dimensions are .150 (3.81 mm) minimum full pin diameter extension (sizes 3 thru 6) and .159 (4.04 mm) minimum full pin diameter extension (sizes 1 & 2).
12. Unless otherwise specified, tolerance is  $\pm .010$  inch.

THIS IS A DESIGN STANDARD, NOT TO BE USED AS A PART NUMBER.

User activities:  
Army - AT  
Navy - MC, CG, SH  
Air Force -Review activities:  
Army - MI  
Navy - AS  
Air Force - 11,99  
DLA - ES

This military standard is approved for use by all Departments and Agencies of the Department of Defense. Selection for all new engineering and design applications and for repetitive use shall be made from this document when applicable.

For changes see pages 1 thru 5

REVISED C

13 June 1973

APPROVED

P.A NAVY-EC Other CustAF-85 ARMY-CR	International Interest	TITLE CONNECTORS, ELECTRIC, RECTANGULAR MINIATURE, POLARIZED SHELL, RACK AND PANEL, SHELL; PLUG, PIN CONTACTS, PRINTED WIRING BOARD TERMINATION TYPES	MILITARY STANDARD
Procurement Specification MIL-C-24308		SUPERSEDES:	MS 14059
			PAGE 5 OF 5