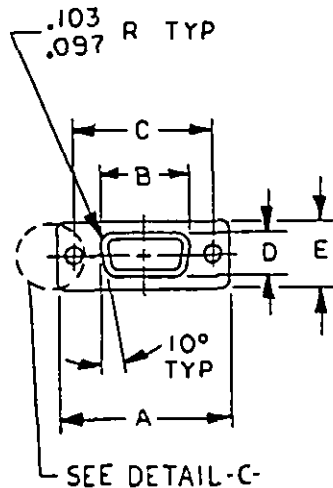
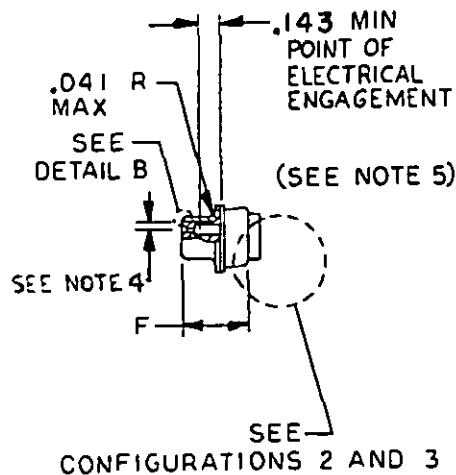
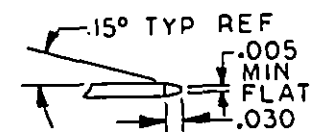
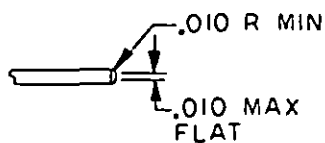
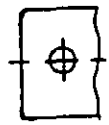
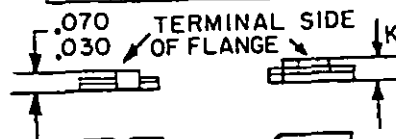
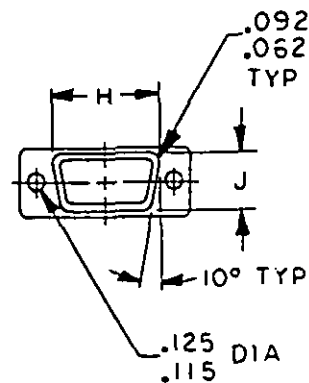
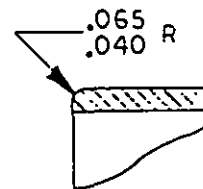
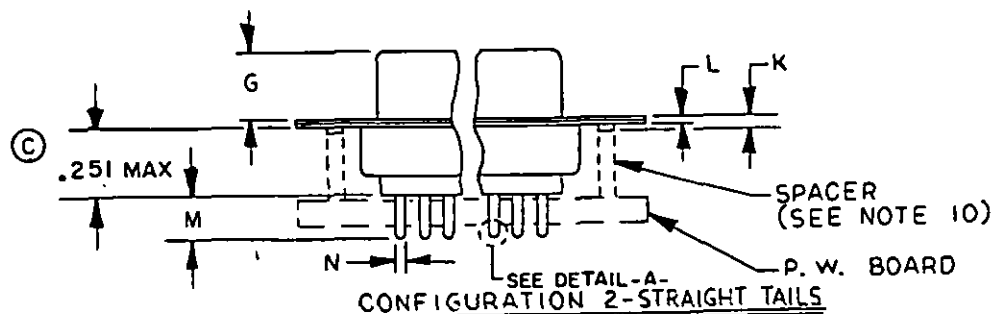


FED. SUP CLASS
5935User activities: Army - ME
Navy - MC, CG, SH
Air Force -Review activities: Army - MI
Navy - AS
Air Force - 11, 99
DLA-ES

This military standard is approved for use by all Departments and Agencies of the Department of Defense. Selection for all new engineering and design applications and for repetitive use shall be made from this document when applicable.

ENGAGING VIEWCONFIGURATION 1DETAIL -C-ALTERNATE METHODS OF SECURING SHELL HALVESTERMINAL VIEWDETAIL -B-

(C) DENOTES CHANGE

P.A. NAVY-EC

Other Cust
AF-85
ARMY-CRProcurement Specification
MIL-C-24308International
InterestTITLE CONNECTORS, ELECTRIC, RECTANGULAR
MINIATURE, POLARIZED SHELL, RACK AND PANEL,
SHELL, RECEPTACLE, SOCKET CONTACTS, PRINTED
WIRING BOARD TERMINATION TYPES

SUPERSEDES:

MILITARY STANDARD

MS14058

PAGE 1 OF 6

DD FORM 672
1 MAY 73
AMSC N/A

(Coordinated) PREVIOUS EDITIONS OF THIS FORM ARE OBSOLETE.

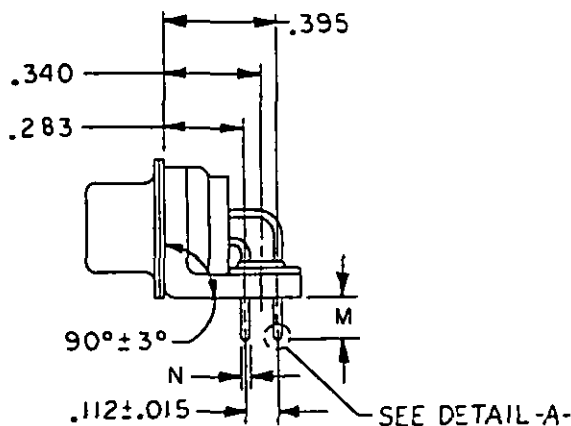
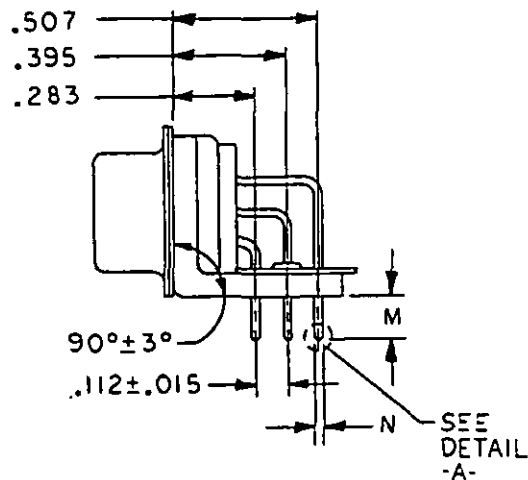
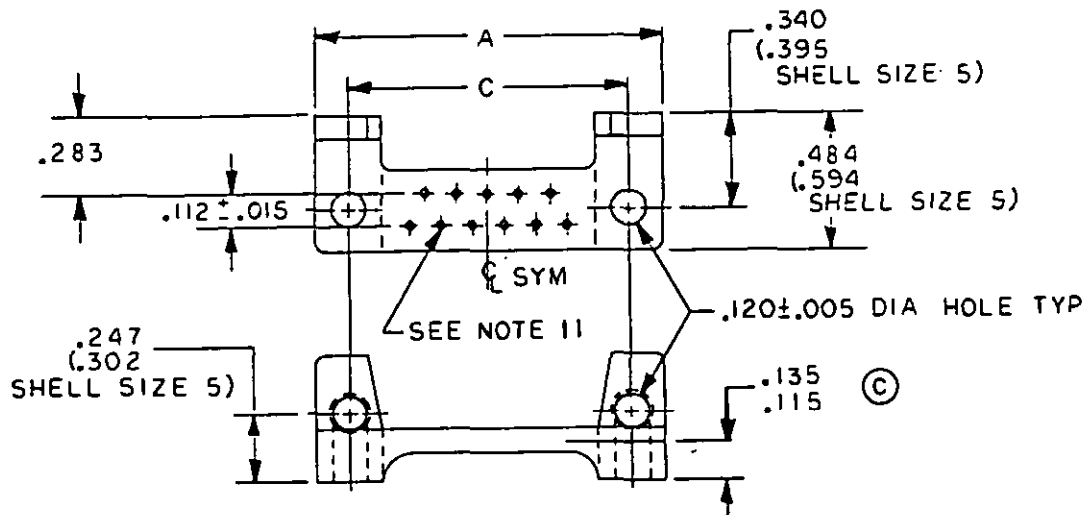
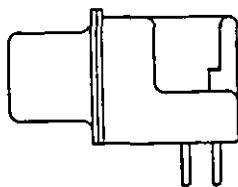
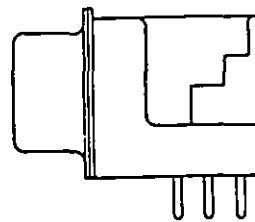
DISTRIBUTION STATEMENT A. Approved for public release; distribution is unlimited.

5935-3608-01

APPROVED 13 JUN 73
REVISED (A) 12 OCT 73 (B) 5 DEC 83 (C) 26 JAN 89

FED. SUP CLASS
5935User activities: Army - ME
Navy - MC, CG, SH
Air Force -Review activities: Army - MI
Navy - AS
Air Force - 11, 99
DLA-ES

This military standard is approved for use by all Departments and Agencies of the Department of Defense. Selection for all new engineering and design applications and for repetitive use shall be made from this document when applicable.

SHELL SIZE 1, 2, 3 AND 4SHELL SIZE 590° MOUNTING BRACKETSHELL SIZE 1, 2, 3 AND 4SHELL SIZE 5ALTERNATE CONFIGURATION OF REAR INSERT & MOUNTING BRACKETCONFIGURATION 3 - RIGHT ANGLE TAILS

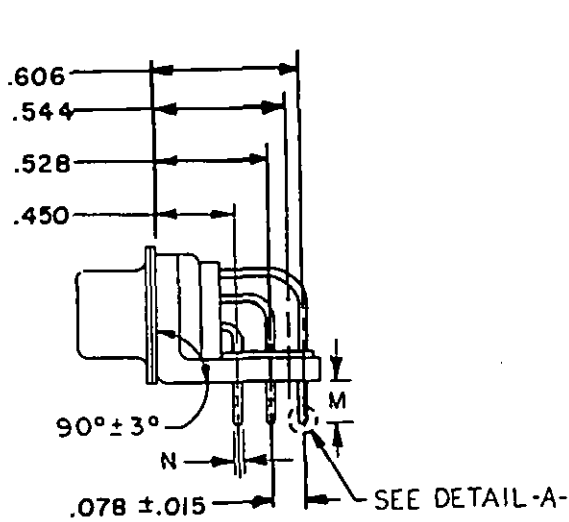
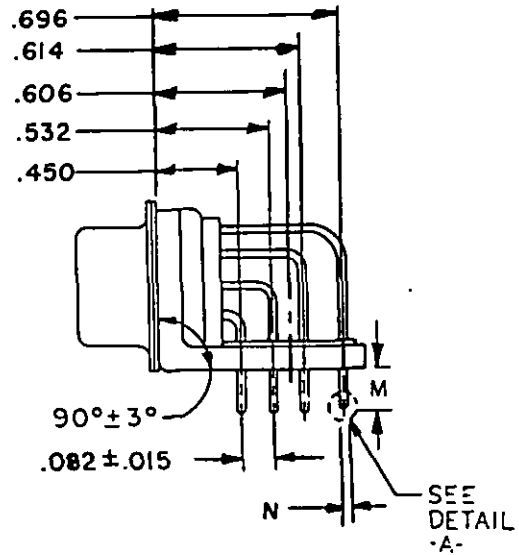
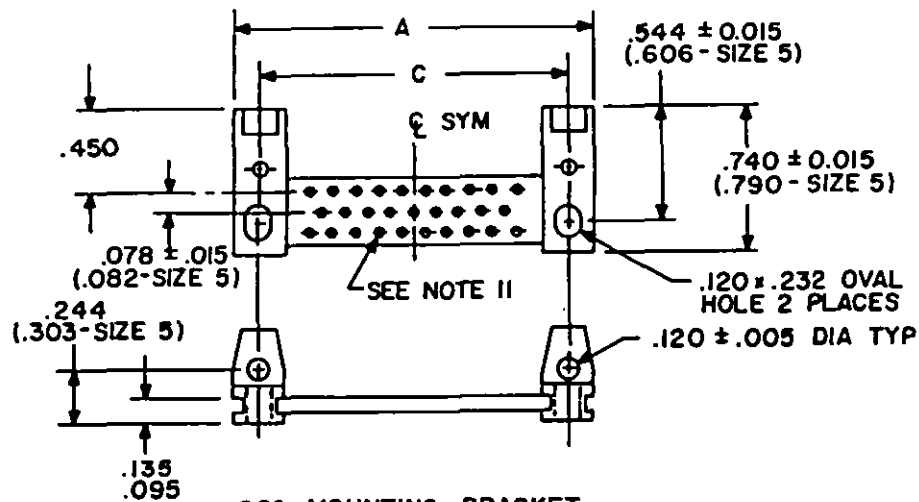
REVISED (C) FOR CHANGES SEE PAGES 1, 2, 3, AND 5

APPROVED 13 JUN 73

P.A NAVY-EC	Intermittent Interest	TITLE CONNECTORS, ELECTRIC, RECTANGULAR MINIATURE, POLARIZED SHELL, RACK AND PANEL, SHELL, RECEPTACLE, SOCKET CONTACTS, PRINTED WIRING BOARD TERMINATION TYPES	MILITARY STANDARD
Other Cust AF-85 ARMY-CR			MS14058
Procurement Specification MIL-C-24308	SUPERSEDES:		PAGE 2 OF 6

FED. SUP CLASS
5935User activities: ARMY - ME
NAVY - MC, CG, SH
AIR FORCE -Review activities: ARMY - MI
NAVY - AS
AIR FORCE -
DLA-ES

This military standard is approved for use by all Departments and Agencies of the Department of Defense. Selection for all new engineering and design applications and for repetitive use shall be made from this document when applicable.

SHELL SIZE 1, 2, 3 AND 4SHELL SIZE 590° MOUNTING BRACKETCONFIGURATION 4 - RIGHT ANGLE TAILS

P.A. NAVY-EC	International Interest	TITLE CONNECTORS, ELECTRIC, RECTANGULAR MINIATURE, POLARIZED SHELL, RACK AND PANEL, SHELL, RECEPTACLE, SOCKET CONTACTS, PRINTED WIRING BOARD TERMINATION TYPES	MILITARY STANDARD
Other Cust AF-85 ARMY-CR			MSI4058
Procurement Specification MIL-C-24308		SUPERSEDES:	PAGE 3 OF 6

FED. SUP CLASS
5935User activities: ME
Navy - MC, CG, SH
Air Force -Review activities: MI
Navy - AS
Air Force - 11, 99
DLA-ES

This military standard is approved for use by all Departments and Agencies of the Department of Defense. Selection for all new engineering and design applications and for repetitive use shall be made from this document when applicable.

TABLE I. Dimensions and configuration.

MS no. 14058	Tails	Shell size	A	B	C	D	E	F	G	H	J	K	L
-61, -67			1.228	.648	.989	.316	.509	.439	.248	.769	.432	.060	.040
-1, -7	Straight	1	(31.19)	(16.46)	(25.12)	(8.03)	(12.93)	(11.15)	(6.30)	(19.53)	(10.97)	(1.52)	(1.02)
-13, -19			1.198	.638	.979	.306	.479	.419	.238	.749	.412	.035	.020
-25, -31			(30.43)	(16.21)	(24.87)	(7.77)	(12.17)	(10.64)	(6.05)	(19.02)	(10.46)	(0.89)	(0.51)
-37, -43	Right												
-49, -55	angle												
-73													
-62, -68			1.556	.976	1.317	.316	.509	.439	.248	1.093	.432	.060	.040
-2, -8	Straight	2	(39.52)	(24.79)	(33.45)	(8.03)	(12.93)	(11.15)	(6.30)	(27.76)	(10.97)	(1.52)	(1.02)
-14, -20			1.526	.966	1.307	.306	.479	.419	.238	1.073	.412	.035	.020
-26, -32			(38.76)	(24.54)	(33.20)	(7.77)	(12.17)	(10.64)	(6.05)	(27.25)	(10.46)	(0.89)	(0.51)
-38, -44	Right												
-50, -56	angle												
-74													
-63, -69			2.103	1.516	1.857	.316	.509	.439	.248	1.635	.432	.060	.040
-3, -9	Straight		(53.42)	(38.51)	(47.17)	(8.03)	(12.93)	(11.15)	(6.30)	(41.53)	(10.97)	(1.52)	(1.02)
-15, -21		3	2.073	1.506	1.847	.306	.479	.419	.238	1.615	.412	.035	.020
-75			(52.65)	(38.25)	(46.91)	(7.77)	(12.17)	(10.64)	(6.05)	(41.02)	(10.46)	(0.89)	(0.51)
-27, -33	Right												
-39, -45	angle												
-51, -57													
-64, -70			2.744	2.164	2.505	.316	.509	.439	.248	2.282	.432	.060	.040
-4, -10	Straight	4	(69.70)	(54.97)	(63.63)	(8.03)	(12.93)	(11.15)	(6.30)	(57.96)	(10.97)	(1.52)	(1.02)
-16, -22			2.714	2.154	2.495	.306	.479	.419	.238	2.262	.412	.035	.020
-28, -34			(68.94)	(54.71)	(63.37)	(7.77)	(12.17)	(10.64)	(6.05)	(57.45)	(10.46)	(0.89)	(0.51)
-40, -46	Right												
-52, -58	angle												
-76													
-65, -71			2.650	2.069	2.411	.428	.620	.439	.248	2.188	.544	.060	.040
-5, -11	Straight	5	(67.31)	(52.55)	(61.24)	(10.87)	(15.75)	(11.15)	(6.30)	(55.58)	(13.82)	(1.52)	(1.02)
-17, -23			2.620	2.059	2.401	.418	.590	.419	.238	2.168	.524	.035	.020
-29, -35			(66.55)	(52.30)	(60.99)	(10.62)	(14.00)	(10.64)	(6.05)	(55.07)	(13.31)	(0.89)	(0.51)
-41, -47	Right												
-53, -59	angle												
-77													

C

P.A NAVY-EC

Other Cust
AF-85
ARMY-CRProcurement Specification
MIL-C-24308International
InterestTITLE CONNECTORS, ELECTRIC, RECTANGULAR
MINIATURE, POLARIZED SHELL, RACK AND PANEL,
SHELL, RECEPTACLE, SOCKET CONTACTS, PRINTED
WIRING BOARD TERMINATION TYPES

SUPERSEDES:

MILITARY STANDARD

MS14058

PAGE 4 OF 6

APPROVED 13 JUN 73 REVISED C FOR CHANGES SEE PAGES 1, 2, 3, AND 5

FED. SUP CLASS
5935

TABLE II. Application data and dimensions.

MS no. 14058	Applicable configurations	Applicable board thickness	Nominal pin diameter	M	N
-1 thru -5	1 and 2	.094 (2.39 mm)	.030 (0.76 mm)	.185 (4.70 mm) .130 (3.30 mm)	.033 (0.84 mm) .027 (0.69 mm)
-7 thru -11	1 and 2	.125 (3.18 mm)	.030 (0.76 mm)	.210 (5.33 mm) .155 (3.94 mm)	.033 (0.84 mm) .027 (0.69 mm)
-13 thru -17	1 and 2	.094 (2.39 mm)	.040 (1.02 mm)	.185 (4.70 mm) .130 (3.30 mm)	.043 (1.09 mm) .037 (0.94 mm)
-19 thru -23	1 and 2	.125 (3.18 mm)	.030 (0.76 mm)	.210 (5.33 mm) .155 (3.94 mm)	.043 (1.09 mm) .037 (0.94 mm)
-25 thru -29	1 and 3	.062 (1.57 mm)	.030 (0.76 mm)	.154 (3.91 mm) .099 (2.51 mm)	.033 (0.84 mm) .027 (0.69 mm)
-31 thru -35	1 and 3	.094 (2.39 mm)	.030 (0.76 mm)	.185 (4.70 mm) .130 (3.30 mm)	.033 (0.84 mm) .027 (0.69 mm)
-37 thru -41	1 and 3	.062 (1.57 mm)	.040 (1.02 mm)	.154 (3.91 mm) .099 (2.51 mm)	.043 (1.09 mm) .037 (0.94 mm)
-43 thru -47	1 and 3	.094 (2.39 mm)	.040 (1.02 mm)	.185 (4.70 mm) .130 (3.30 mm)	.043 (1.09 mm) .037 (0.94 mm)
-49 thru -53	1 and 3	.125 (3.18 mm)	.030 (0.76 mm)	.210 (5.33 mm) .155 (3.94 mm)	.033 (0.84 mm) .027 (0.69 mm)
-55 thru -59	1 and 3	.125 (3.18 mm)	.040 (1.02 mm)	.210 (5.33 mm) .155 (3.94 mm)	.043 (1.09 mm) .037 (0.94 mm)
-61 thru -65	1 and 2	.094 (2.39 mm)	.020 (0.51 mm)	.185 (4.70 mm) .130 (3.30 mm)	.023 (0.58 mm) .017 (0.43 mm)
-67 thru -71	1 and 2	.125 (3.18 mm)	.020 (0.51 mm)	.320 (8.13 mm) .275 (6.99 mm)	.023 (0.58 mm) .017 (0.43 mm)
-73 thru -77	1 and 4	.062 (1.57 mm)	.020 (0.51 mm)	.154 (3.91 mm) .099 (2.51 mm)	.023 (0.58 mm) .017 (0.43 mm)

APPROVED 13 JUN 73 REVISED C FOR CHANGES SEE PAGES 1, 2, 3, AND 5

P.A. NAVY-EC	International Interest	TITLE CONNECTORS, ELECTRIC, RECTANGULAR MINIATURE, POLARIZED SHELL, RACK AND PANEL, SHELL, RECEPTACLE, SOCKET CONTACTS, PRINTED WIRING BOARD TERMINATION TYPES	MILITARY STANDARD
Other Cust AF-85 ARMY-CR			MS14058
Procurement Specification MIL-C-24308	SUPERSEDES:		PAGE 5 OF 6

This military standard is approved for use by all Departments and Agencies of the Department of Defense. Selection for all new engineering and design applications and for repetitive use shall be made from this document when applicable.

User activities: Army - ME
Navy - MC, CG, SH
Air Force -
DLA-ES

Review activities: Army - MJ
Navy - AS
Air Force - 11, 99

FED. SUP CLASS
5935User activities: Army - ME
Navy - MC, CG, SH
Air Force -Review activities: Army - MJ
Navy - AS
Air Force - 11, 99
DLA-ES

This military standard is approved for use by all Departments and Agencies of the Department of Defense. Selection for all new engineering and design applications and for repetitive use shall be made from this document when applicable.

Inches	mm	Inches	mm	Inches	mm
.005	0.13	.092	2.34	.247	6.27
.010	0.25	.097	2.46	.251	6.38
.015	0.38	.103	2.62	.283	7.19
.030	0.76	.112	2.84	.302	7.67
.040	1.02	.115	2.92	.340	8.64
.041	1.04	.120	3.05	.395	10.03
.062	1.57	.125	3.18	.484	12.29
.065	1.65	.135	3.43	.507	12.88
.070	1.78	.149	3.78	.594	15.09

NOTES:

1. Dimensions are in inches.
2. Millimeters are in parentheses.
3. Metric equivalents are given for general information only.
4. Socket contact shall accommodate .041/.039 inch (1.04/0.99 mm) diameter pin.
5. Point of electrical engagement. Use .0393/ .0390 (1.00/0.99 mm) diameter square ended test pin.
6. Applicable insert patterns: MS18273-1, MS18274-1, MS18275-1, MS18276-1 and MS18277-1.
7. Copyright notice. All information disclosed in this military standard which is or may be copyrighted by ITT Cannon Electric is reproduced herein with the expressed permission of the copyright owner.
8. The 90° bracket shall be one piece flame resistant glass-filled nylon, polyester or two piece metal and nylon of which the metal pieces shall be coated with a material in accordance with MIL-I-46058.
9. The 90° bracket shall be furnished as an integral part of the connector assembly.
10. Spacers will be supplied with connectors (not attached to the connector).
11. Layout shown for reference only to locate C_L of hole pattern. See applicable insert arrangement.
12. Requirement for contact retention shall be 3.5 lbs. for right angle printed circuit board mount connectors. Connectors may be fastened to board for test.
13. Unless otherwise specified, tolerance is ± 0.010 inch (0.25 mm).
14. In the event of a conflict between the text of this standard and the references cited herein, the text of this standard shall take precedence.
15. Referenced Government documents of the issue listed in that issue of the Department of Defense Index of Specifications and Standards (DODISS) specified in the solicitation form a part of this standard to the extent specified herein.

P.A. NAVY-EC	International Interest	TITLE CONNECTORS, ELECTRIC, RECTANGULAR MINIATURE, POLARIZED SHELL, RACK AND PANEL, SHELL, RECEPTACLE, SOCKET CONTACTS, PRINTED WIRING BOARD TERMINATION TYPES	MILITARY STANDARD
Other Cust AF-85 ARMY-CR			MS14058
Procurement Specification MIL-C-24308	SUPERSEDES:		PAGE 6 OF 6