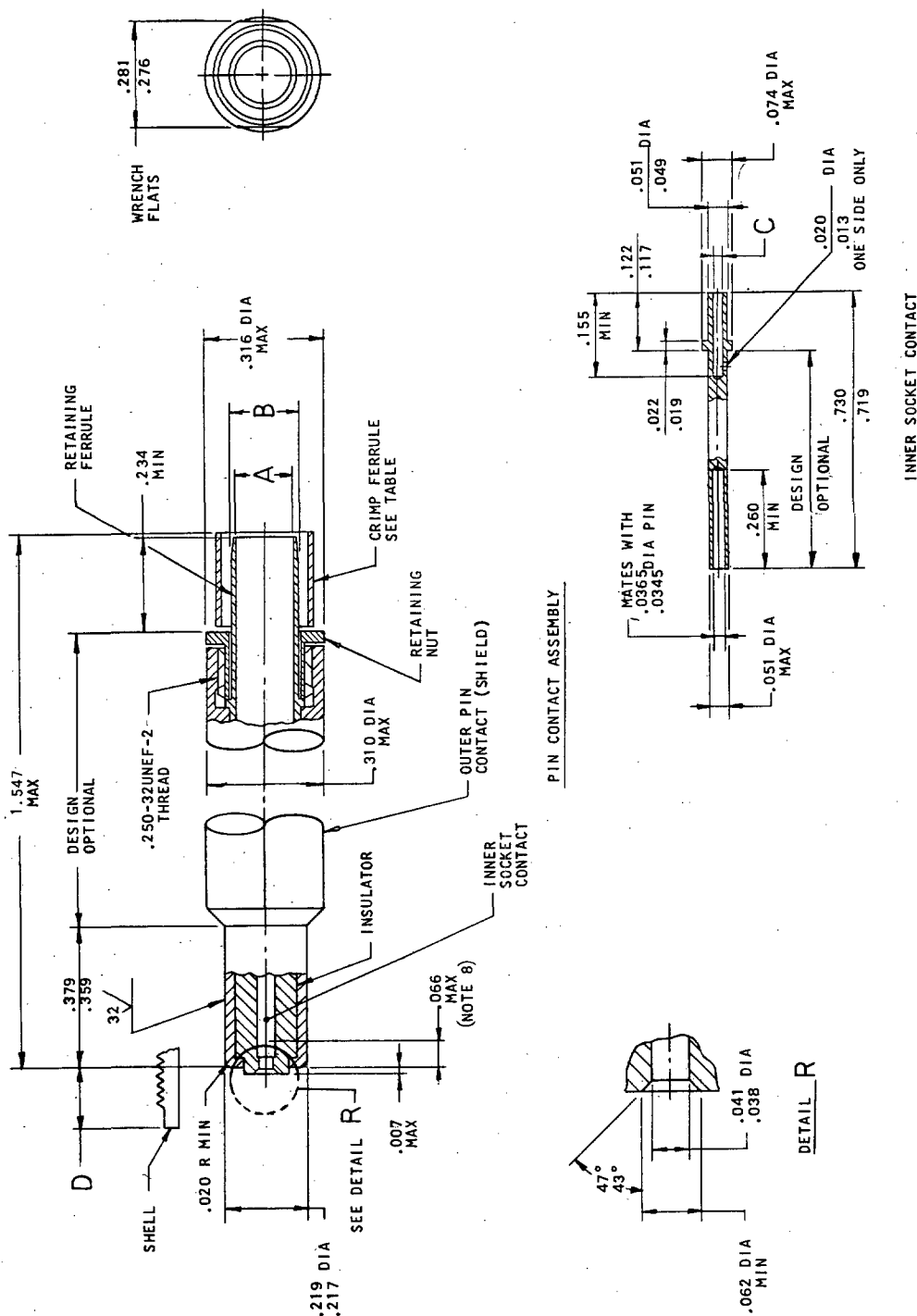


FED. SUP CLASS
5935User:
Army - MO
Navy - CG, MC
Air Force - 19Review:
Army - MI, MJ
Navy - AS, OS, SH
Air Force - 17, 80

This military standard is approved for use by all Departments and Agencies of the Department of Defense. Selection for all new engineering and design applications and for repetitive use shall be made from this document.



P.A. EC
Other Cust
ARMY - EL
AIR FORCE - 11

TITLE

CONTACTS, ELECTRIC CONNECTOR,
SHIELDED CABLE APPLICATIONS,
SIZE 8

MILITARY STANDARD

MS 14056

PROCUREMENT SPECIFICATION
MIL-C-5015, MIL-C-22992

SUPERSEDES:

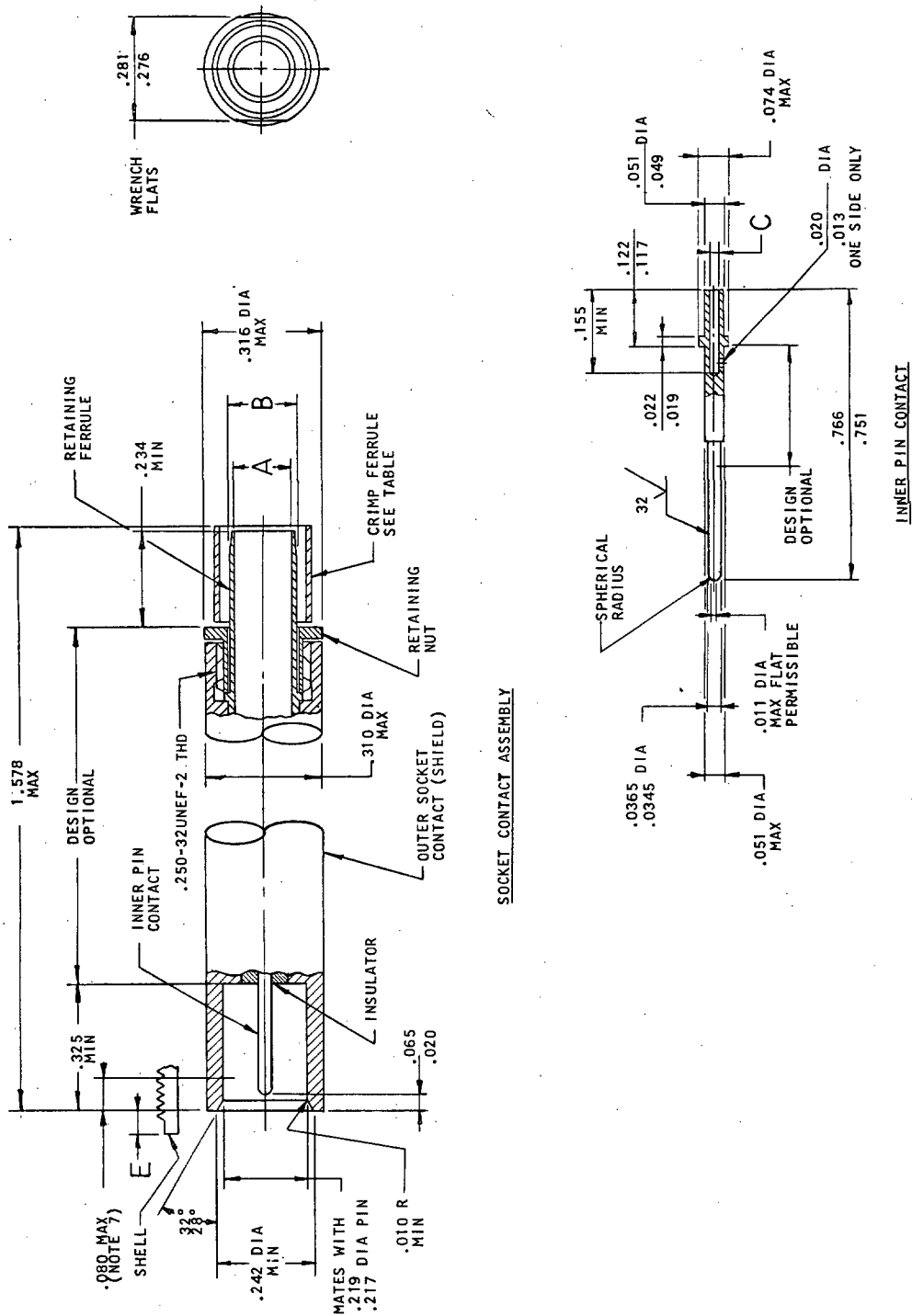
SHEET 1 OF 3

DD FORM 672-1
1 SEP 57

PREVIOUS EDITIONS OF THIS FORM ARE OBSOLETE.

Project 5935-1883

APPROVED 8 Dec. 1972 REVISED

FED. SUP CLASS
5935

SOCKET CONTACT ASSEMBLY

INNER PIN CONTACT

This military standard is approved for use by all Departments and Agencies of the Department of Defense. Selection for all new engineering and design applications and for repetitive use shall be made from this document.

P.A.
Other Cust

TITLE

CONTACTS, ELECTRIC CONNECTOR,
SHIELDED CABLE APPLICATIONS,
SIZE 8

MILITARY STANDARD

MS 14056

PROCUREMENT SPECIFICATION
MIL-C-5015, MIL-C-22992

SUPERSEDES:

SHEET 2 OF 3

APPROVED 8 Dec. 1972 REVISED

DD FORM 672-1
1 SEP 57

PREVIOUS EDITIONS OF THIS FORM ARE OBSOLETE.

FED. SUP CLASS
5935

DASH NO.	FOR COAXIAL CABLE RG-()/U 1/	A DIA MIN	B DIA	C DIA MIN	D				E			
					MIL-C-5015		MIL-C-22992		MIL-C-5015		MIL-C-22992	
					PLUG	RCPT	PLUG	RCPT	PLUG	RCPT	PLUG	RCPT
-1	179B	.067	.110 .106	.014								
-2	59B, 62A, 210	.152	.185 .181	.027	.269 .204	.267 .207	.269 .204	.314 .254	.240 .174	.237 .177	.240 .174	.284 .224

1/ - CONFORMING TO MIL-C-17

DASH NO.	CRIMP FERRULE	HEX CRIMP DIES (NOTE 6)
-1	MS21980-128	M22910/7-12(B)
-2	MS21980-225	M22910/7-18(B)

INCHES	MM	INCHES	MM	INCHES	MM	INCHES	MM
.007	.18	.074	1.88	.240	6.10	.766	19.46
.010	.25	.080	2.03	.242	6.15	1.547	39.29
.011	.28	.106	2.69	.250	6.35	1.578	40.08
.013	.33	.110	2.79	.254	6.45		
.014	.36	.117	2.97	.260	6.60		
.019	.48	.122	3.10	.264	6.71		
.020	.51	.132	3.36	.267	6.78		
.022	.56	.135	3.43	.269	6.83		
.027	.69	.174	4.42	.276	7.01		
.0345	.88	.177	4.50	.281	7.14		
.0365	.93	.179	4.55	.284	7.21		
.038	.97	.181	4.60	.310	7.87		
.041	1.04	.185	4.70	.314	7.98		
.049	1.24	.207	5.26	.316	8.03		
.051	1.30	.217	5.51	.325	8.26		
.062	1.57	.219	5.56	.359	9.12		
.065	1.65	.224	5.69	.379	9.63		
.066	1.68	.234	5.94	.719	18.26		
.067	1.70	.237	6.02	.730	18.54		
				.751	19.08		

NOTES:

- ALL DIMENSIONS ARE IN INCHES AND ARE AFTER PLATING.
- METRIC EQUIVALENTS (TO THE NEAREST .01 MM) ARE GIVEN FOR GENERAL INFORMATION ONLY AND ARE BASED UPON 1 INCH = 25.4 MM.
- ALL SURFACES TO BE 63/ OR BETTER IN ACCORDANCE WITH ANSI B46.1-1962 UNLESS OTHERWISE SPECIFIED.
- REMOVE ALL BURRS AND SHARP EDGES .003-.005 (.08-.13 MM) R UNLESS OTHERWISE SPECIFIED.
- ALL DIAMETERS TO BE CONCENTRIC TO EACH OTHER WITHIN .005 (.13 MM) TOTAL INDICATOR READING (TIR) UNLESS OTHERWISE SPECIFIED.
- OUTER CONTACTS (SHIELDS) SHALL BE CRIMPED WITH A TOOL CONFORMING TO M22910/7-1 WITH APPROPRIATE DIES (SEE TABLE). THE INNER PIN AND SOCKET CONTACTS SHALL BE EITHER CRIMPED WITH A M22520/2 CRIMP TOOL OR SOLDERED IN ACCORDANCE WITH MANUFACTURER'S INSTRUCTIONS.
- POINT AT WHICH A SQUARE ENDED .218 (5.54 MM) DIA PIN FIRST ENGAGES THE OUTER SOCKET CONTACT SPRING.
- POINT AT WHICH A SQUARE ENDED .0355 (.90 MM) DIA PIN FIRST ENGAGES THE INNER SOCKET CONTACT SPRING.
- MATERIALS:
OUTER SOCKET CONTACT, INNER SOCKET CONTACT - BERYLLIUM COPPER QQ-C-530
OUTER PIN CONTACT, RETAINING FERRULE, RETAINING NUT - BRASS QQ-B-626
INNER PIN CONTACT - BRASS QQ-W-321
INSULATORS - POLYTETRAFLUOROETHYLENE (TFE) OR FLUORINATED-ETHYLENE-PROPYLENE (FEP) RESIN
- ENGAGING AND SEPARATION FORCES - TEST PINS TO BE IN ACCORDANCE WITH MS3197 EXCEPT FOR THE DIAMETERS LISTED BELOW:
A. OUTER SOCKET CONTACT - 48 OZ MAX ENGAGING FORCE WITH .2192/.2190 (5.568/5.563 MM) DIA PIN.
4 OZ MIN SEPARATION FORCE WITH A .2170/.2168 (5.512/5.507 MM) DIA PIN.
B. INNER SOCKET CONTACT - 18 OZ MAX ENGAGING FORCE WITH .0367/.0365 (.932/.927 MM) DIA PIN.
3/4 OZ MIN SEPARATION FORCE WITH A .0345/.0343 (.876/.871 MM) DIA PIN.
- DIELECTRIC WITHSTANDING VOLTAGE - 1500 VAC RMS, APPLIED BETWEEN INNER AND OUTER CONTACTS.
- INSULATION RESISTANCE - MEASURED BETWEEN INNER AND OUTER CONTACTS.
- PROBE DAMAGE - NOT APPLICABLE.
- CRIMP TENSILE STRENGTH -

DASH NO.	TENSILE STRENGTH (LBS. MIN)	
	INNER CONTACT	OUTER CONTACT
-1	4	18
-2	20	60

- CONTACT RETENTION:
A. OUTER CONTACT: 20 POUNDS.
B. INNER CONTACT: 5 POUNDS.
- CONTACT RESISTANCE:
A. OUTER CONTACT: 5 MV AT 1 AMP.
B. INNER CONTACT: 15 MV AT 1 AMP.

THIS IS A DESIGN STANDARD AND SHALL NOT BE USED AS A PART NUMBER.

FOR DESIGN FEATURE PURPOSES, THIS STANDARD TAKES PRECEDENCE OVER PROCUREMENT DOCUMENTS REFERENCED HEREIN. REFERENCED DOCUMENTS SHALL BE OF THE ISSUE IN EFFECT ON DATE OF INVITATION FOR BID.

REVISED
APPROVED 8 Dec. 1972

P.A. Other Cust	TITLE CONTACTS, ELECTRIC CONNECTOR; SHIELDED CABLE APPLICATIONS, SIZE 8	MILITARY STANDARD MS 14056
PROCUREMENT SPECIFICATION MIL-C-5015, MIL-C-22992	SUPERSEDES:	SHEET 3 OF 3

DD FORM 672-1
1 SEP 67

PREVIOUS EDITIONS OF THIS FORM ARE OBSOLETE.