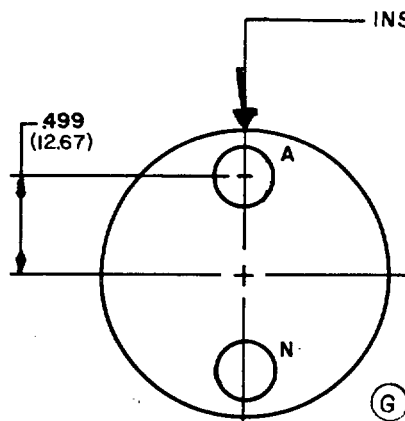


FED. SUP CLASS  
5935FRONT FACE OF PIN INSERT SHOWN  
(SOCKET INSERT OPPOSITE), UNLESS  
OTHERWISE SPECIFIEDUser activities: Army - AT, AV, ME  
Navy - MC, CG, OS, SH  
Air Force - 19

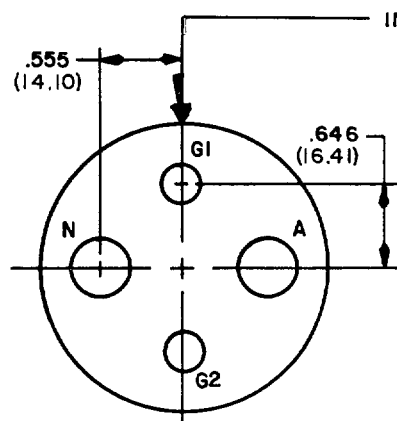
INSERT INDEX

28 VOLT DC TWO WIRE  
-02 AND -03 INSERT ARRANGEMENTS

QTY	CONTACT	SIZE	SOCKET M39029	PIN M39029
1	A	1/0	49-333	48-323
1	N	1/0N	49-333 SEE NOTE 9	48-324

SERVICE D

-02-CABLE ICEA 2-NO 2 CONDUCTOR  
ROUND TYPE W 0-600 Volts  
-03-CABLE-CO-02 HDF (2/1) 1385 PER  
MIL-C-3432  
MARK 44-02 ON 44-03 INSERT (SEE NOTE 8)

Review activities: Army - CR, MI  
Navy - AS, YD  
Air Force - 17, 80  
DLA - ES

INSERT INDEX

AC SINGLE PHASE TWO WIRE GROUNDING  
-04 AND -05 INSERT ARRANGEMENTS

QTY	CONTACT	SIZE	SOCKET M39029	PIN M39029
1	A	1/0	49-333	48-323
1	N	1/0N	49-333 SEE NOTE 9	48-324
2	G1, G2	4G	49-332	48-322

SERVICE D

-04-CABLE ICEA 2-NO 2 CONDUCTOR  
ROUND TYPE G 0-600 Volts  
-05-CABLE-CO-02 HDF (2/1-2/5R) 1385 PER  
MIL-C-3432  
MARK 44-04 ON 44-05 INSERT (SEE NOTE 8)

G denotes changes

This military standard is approved for use by all Departments and Agencies of the Department of Defense. Selection for all new engineering and design applications and for repetitive use shall be made from this document when applicable.

P.A NAVY - EC	International Interest	TITLE INSERT ARRANGEMENTS, ELECTRICAL CONNECTOR, SIZE 44, CLASS L, 100 AMPS	MILITARY STANDARD
Other Cust ARMY - CR AF - 85			MS14055
Procurement Specification MIL-C-22992	SUPERSEDES:		PAGE 1 OF 5

DD FORM 672 (Coordinated) PREVIOUS EDITIONS OF THIS FORM ARE OBSOLETE.

5935-3333-1

APPROVED 2 Feb 1972  
REVISED G 20 December 1982

User activities: Army - AT, AV, ME  
Navy - MC, CG, OS, SH  
Air Force - 19

Review activities: Army - CR, MI  
Navy - AS, YD  
Air Force - 17, 80  
DLA - ES

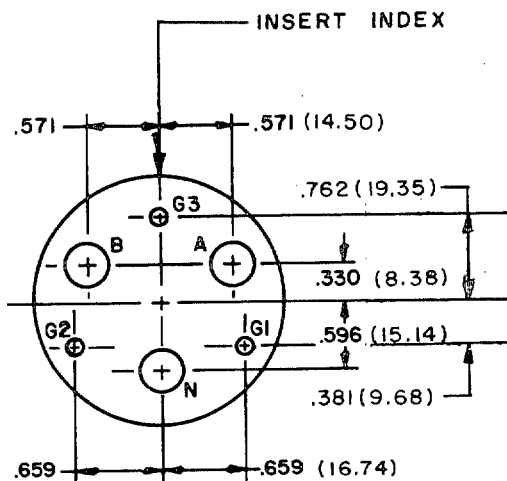
This military standard is approved for use by all Departments and Agencies of the Department of Defense. Selection for all new engineering and design applications and for repetitive use shall be made from this document when applicable.

AC SINGLE PHASE THREE WIRE GROUNDING  
-06 INSERT ARRANGEMENT

FED. SUP CLASS  
5935

QTY	CONTACT	SIZE	SOCKET M39029	PIN M39029
2	A, B	1/0	49-333	48-323
1	N	1/0N	49-333 SEE NOTE 9	48-324
3	G1, G2, G3	6G	49-330	48-319

(G)



SERVICE D

-06 ICEA 3-NO 2 CONDUCTOR  
CABLE ROUND TYPE G 0-600 Volts

FRONT FACE OF PIN INSERT SHOWN  
(SOCKET INSERT OPPOSITE), UNLESS  
OTHERWISE SPECIFIED.

INSERT ROTATION  
(DEGREES FROM NORMAL)

ARRANGEMENT NUMBER	NORMAL (SEE FIG. 1) DC or 60 Hz	ALTERNATE (SEE FIG 1) 400 Hz		
		Z	X	Y
44-02, 44-03	0°	---	---	---
44-04, 44-05	0°	45°	---	---
44-06	0°	---	---	---
44-06	0°	---	---	---
44-12, 44-13	0°	60°	---	---
44-50, 44-51	0°	---	---	---
44-52, 44-56	0°	---	---	---

FOR CHANGES SEE PAGES 1, 2, 3, & 4

(G)

For changes see pages 1 and 2

REVISED (E)

2 Feb 1972

APPROVED

P.A NAVY - EC

International  
interest

TITLE

INSERT ARRANGEMENTS, ELECTRICAL CONNECTOR,  
SIZE 44, CLASS L, 100 AMPS

MILITARY STANDARD

MS14055

Procurement Specification  
MIL-C-22992

SUPERSEDES:

PAGE 2 OF 5

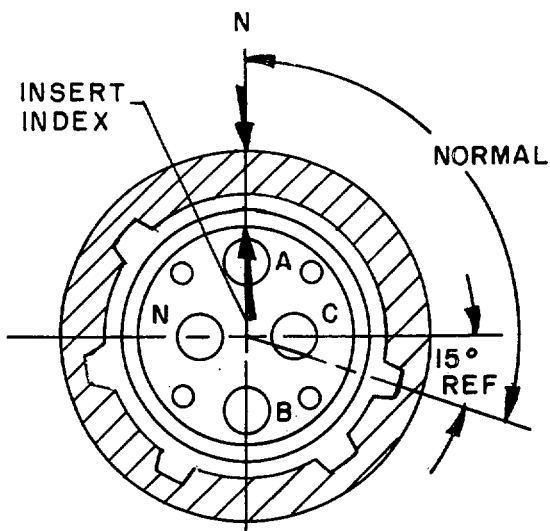
User activities:  
Army - AT, AV, ME  
Navy - MC, CG, OS, SH  
Air Force - 19

Review activities:  
Army - CR, MI  
Navy - AS, YD  
Air Force - 17, 80

This military standard is approved for use by all Departments and Agencies of the Department of Defense. Selection for all new engineering and design applications and for repetitive use shall be made from this document when applicable.

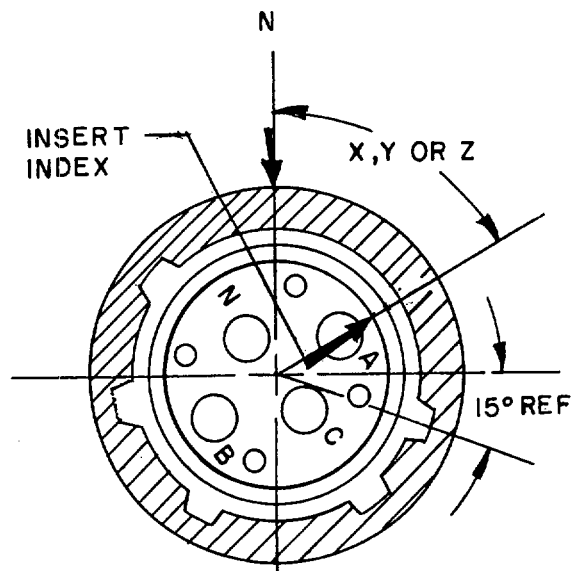
DIA-ES

INSERT IN NORMAL POSITION  
(60 Hz POWER ONLY)



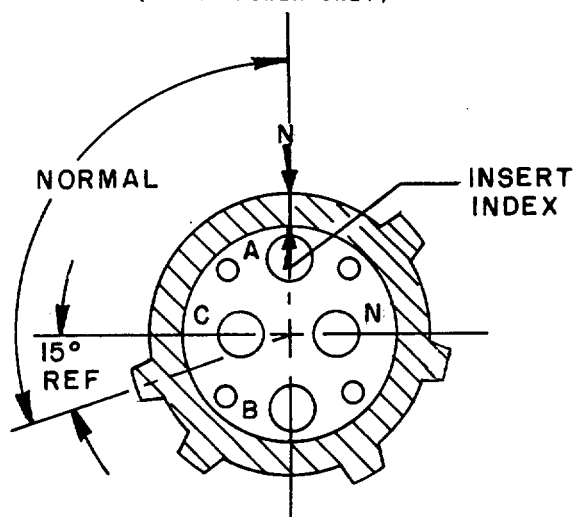
(REF. MS90555\*\*\*\*\*S)  
(REF. MS90557\*\*\*\*\*S)  
SOCKET CONTACT PATTERN  
FRONT FACE OF SOCKET INSERT SHOWN

INSERT IN ALTERNATE POSITION  
(400 Hz POWER ONLY)



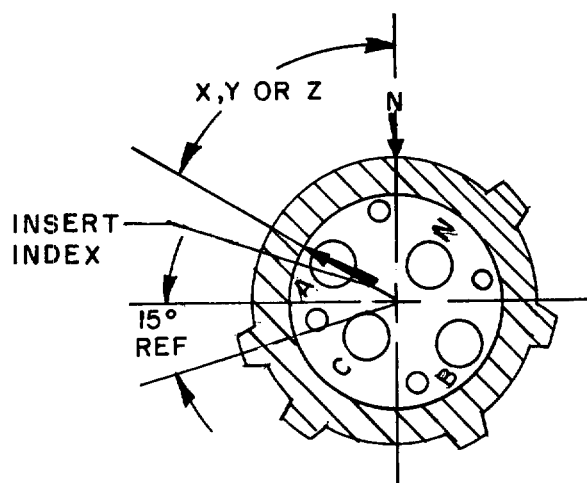
(REF. MS90555\*\*\*\*\*SZ)  
(REF. MS90557\*\*\*\*\*SZ)  
SOCKET CONTACT PATTERN  
FRONT FACE OF SOCKET INSERT SHOWN

INSERT IN NORMAL POSITION  
(60 Hz POWER ONLY)



(REF. MS90556\*\*\*\*\*P)  
(REF. MS90558\*\*\*\*\*P)  
SOCKET CONTACT PATTERN  
FRONT FACE OF PIN INSERT SHOWN

INSERT IN ALTERNATE POSITION  
(400 Hz POWER ONLY)



(REF. MS90556\*\*\*\*\*PZ)  
(REF. MS90558\*\*\*\*\*PZ)  
SOCKET CONTACT PATTERN  
FRONT FACE OF PIN INSERT SHOWN

Ⓒ FIGURE 1.

P.A NAVY - EC	International Interest	TITLE INSERT ARRANGEMENTS, ELECTRICAL CONNECTOR, SIZE 44, CLASS L, 100 AMPS	MILITARY STANDARD
Other Cust ARMY - CR AF - 85			MS14055
Procurement Specification MIL-C-22992		SUPSEDES:	PAGE 3 OF 5

User activities: Army - AT, AV, ME  
Navy - MC, CG, OS, SH  
Air Force - 19

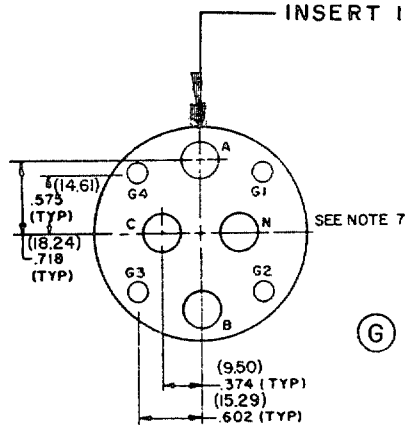
Review activities: Army - CR, MI  
Navy - AS, YD  
Air Force - 17, 80

This military standard is approved for use by all Departments and Agencies of the Department of Defense. Selection for all new engineering and design applications and for repetitive use shall be made from this document when applicable.

DLA -ES

FED. SUP CLASS  
5935

## INSERT INDEX



SERVICE D

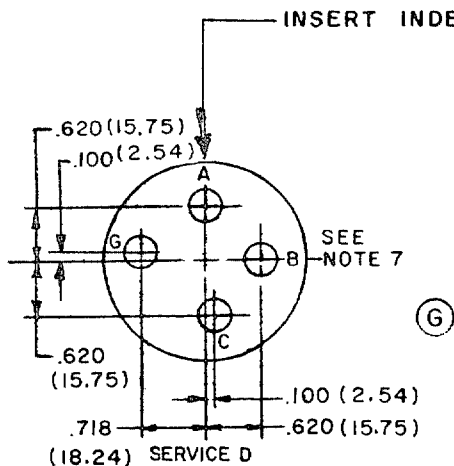
AC THREE PHASE FOUR WIRE GROUNDING  
-12 AND -13 INSERT ARRANGEMENTS

QTY	CONTACT	SIZE	SOCKET M39029	PIN M39029
3	A,B,C	1/0	49-333	48-323
1	N	1/0N	49-333 SEE NOTE 9	48-324
4	G1,G2,G3,G4	6G	49-330	48-319

-12-CABLE ICEA 4-NO 2 CONDUCTOR  
ROUND TYPE G 0-600 Volts  
-13-CABLE CO-04 HDF (4/1-4/8R) 1620  
PER MIL-C-3432  
MARK 44-12 ON 44-13 INSERT (SEE NOTE 8)

FRONT FACE OF PIN INSERT SHOWN  
(SOCKET INSERT OPPOSITE), UNLESS  
OTHERWISE SPECIFIED.

## INSERT INDEX



SERVICE D

AC THREE PHASE THREE WIRE GROUNDING  
-50, -51, -52 and -56 INSERT ARRANGEMENTS  
FOR NAVY GROUND SUPPORT EQUIPMENT USE ONLY  
(SEE NOTE 10)

QTY	CONTACT	SIZE	SOCKET M39029	PIN M39029
3	A,B,C	1/0	49-333	48-323
1	G	1/0N	49-333 SEE NOTE 9	48-324

-50 -FOUR EACH NO. 1 WIRE (RECEPTACLES ONLY)  
-51-CABLE ICEA 4-NO. 1 CONDUCTOR ROUND TYPE W 0-600 Volts 1.68 inch O.D.  
-52-CABLE ICEA 4-NO. 2 CONDUCTOR ROUND TYPE W 0-600 Volts 1.48 inch O.D.  
-56-CABLE ICEA 4-NO. 6 CONDUCTOR ROUND TYPE W 0-600 Volts 1.10 inch O.D.

MARK 44-50 ON 44-51, 44-52 and 44-56 INSERT (SEE NOTE 8)

REVISED (G) For changes see pages 1, 2, 3 & 4

APPROVED 2 Feb 1972

P.A. NAVY - EC	International interest	TITLE	MILITARY STANDARD
Other Cust ARMY - CR AF - 85		INSERT ARRANGEMENTS, ELECTRICAL CONNECTOR, SIZE 44, CLASS L, 100 AMPS	MS14055
Procurement Specification MIL-C-22002	SUPERSEDES:	PAGE 4 OF 5	

FED. SUP CLASS  
5935User activities: Army - AT, AV, ME  
Navy - MC, CG, OS, SH  
Air Force - 19Review activities: Army - CR, MI  
Navy - AS, YD  
Air Force - 17, 80  
DLA-ES

This military standard is approved for use by all Departments and Agencies of the Department of Defense. Selection for all new engineering and design applications and for repetitive use shall be made from this document when applicable.

## NOTES:

1. Dimensions are in inches.
2. Metric equivalents are given for general information only and are based upon 1.00 inch = 25.4 mm.
3. Metric equivalents are in parentheses.
4. Unless otherwise specified, tolerance is  $\pm 0.002$  (.05 mm).
5. For design feature purposes, this standard takes precedence over procurement documents referenced herein.
6. Referenced documents shall be of the issue in effect on date of invitation for bid.
7. Unless otherwise specified, pin insert pattern shown. Socket inserts are the reverse.
8. Trademark and 44-( ) shall appear in available space. Contact identifying letter shall be located so as to identify relative contact.
9. Only the pin contact is lengthened and has the N (neutral) designation. The mating socket contact is the same as the power contact.
10. The contact position labeled (G) in the insert arrangement contains the 1/0N (neutral) size pin contact that is connected to the shell to form a grounding pin contact.

## REQUIREMENTS:

1. Neutral pin (N) is not connected to shell.
2. Grounding pin (G) is connected to shell.
3. Applicable MS3348 crimp bushings shall be supplied with the contacts for insert arrangements as specified:

INSERT ARRANGEMENT	CONTACTS		CABLE CONDUCTORS MS90556 & MS90557		CONTACT BUSHINGS REQUIRED	
	QTY	SIZE	QTY	SIZE	QTY	P/N MS3348-
44-02	2	1/0	2	2	2	1-2L
44-04	2	1/0	2	2	2	1-2L
	2	4	2	6(G)	2	4-6L
44-05	2	1/0	2	1	-	-
	2	4	2	5(G)	2	4-5L
44-06	3	1/0	3	2	3	1-2L
	3	6	3	8(G)	3	6-8L
44-12	4	1/0	4	2	4	1-2L
	4	6	4	9(G)	4	6-9L
44-13	4	1/0	4	1	-	-
	4	6	4	8(G)	4	6-8L
44-52	4	1/0	4	2	4	1-2L
44-56	4	1/0	4	6	4	1-6L

P.A NAVY - EC	International Interest	TITLE INSERT ARRANGEMENTS, ELECTRICAL CONNECTOR, SIZE 44, CLASS L, 100 AMPS	MILITARY STANDARD
Other Cust ARMY - CR AF - 85			MS 14055
Procurement Specification MIL-C-22992	SUPERSEDES:		PAGE 5 OF 5

DD FORM 672 (Coordinated) PREVIOUS EDITIONS OF THIS FORM ARE OBSOLETE.

5935-3333-1

REVISED 6 For changes see pages 1, 2, 3 &amp; 4

APPROVED 2 Feb 1972