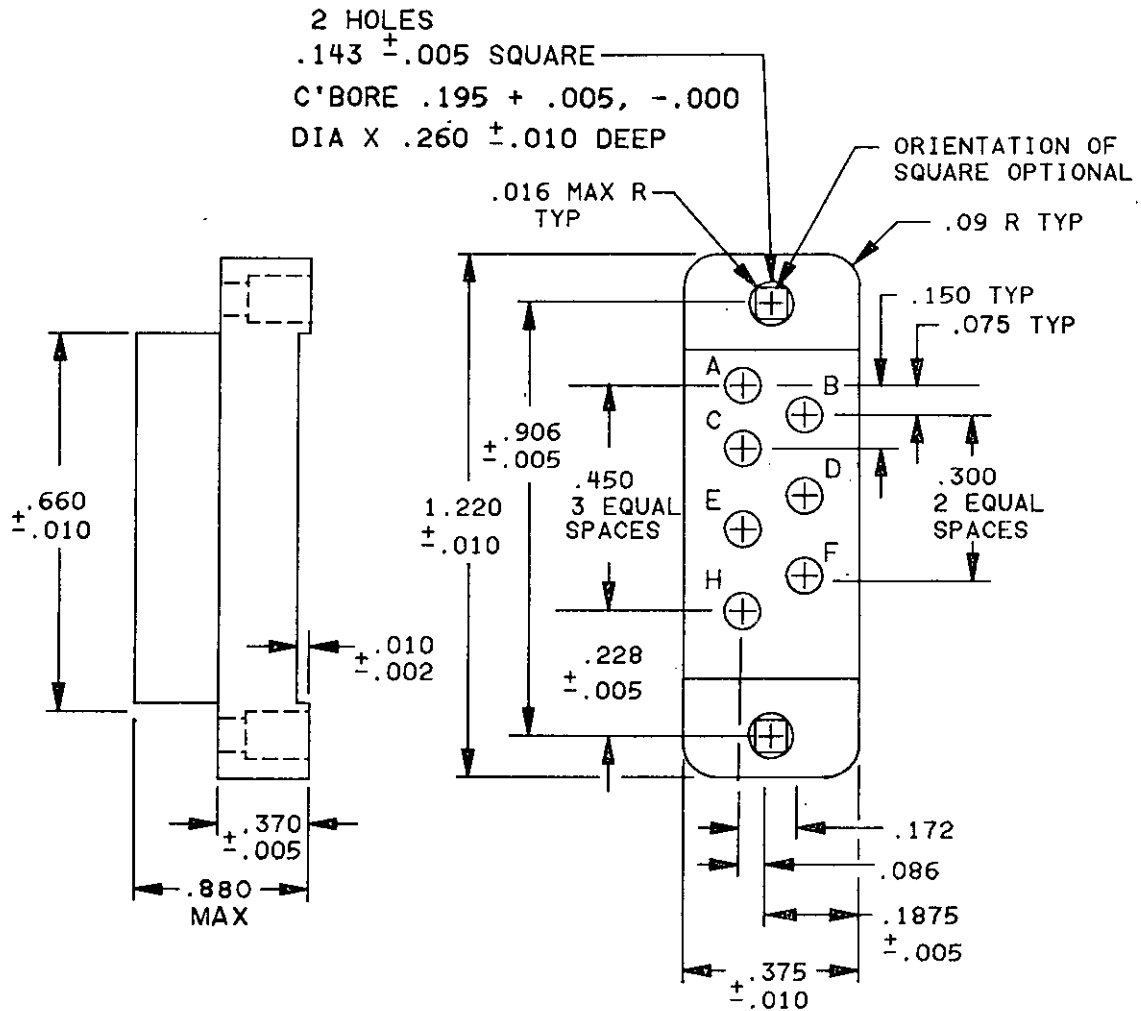


FED. SUP CLASS
5935User activities: Army - ME, AM, AR
Navy - MC, OS
Air Force -Review activities: Army - MI, AT
Navy - AS, SH
Air Force - 11
DLA-ES

This military standard is approved for use by all Departments and Agencies of the Department of Defense. Selection for all new engineering and design applications and for repetitive use shall be made from this document when applicable.



MS PART NO. MS 14011-1

DESIGN STANDARD FOR USE WITH MIL-C-28748/4.

Ⓑ denotes changes

P.A Navy - EC	International interest:	TITLE	MILITARY STANDARD
Other Cust AF-85		Insert (insulator), rectangular connector, electrical 7 (size 16 and 20 crimp removable) socket contacts	MS14011
Army - CR			
Procurement Specification		SUPERSEDES:	PAGE 1 OF 2
MIL-C-28748			

DD FORM 672 (Coordinated) PREVIOUS EDITIONS OF THIS FORM ARE OBSOLETE.

5935-3480-7

APPROVED 20 May 1970 REVISED Ⓐ 23 June 1972 Ⓑ 18 March 1985

FED. SUP CLASS
5935User activities: Army - ME, AM, AR
Navy - MC, OS
Air Force -Review activities: Army - MJ, AT
Navy - AS, SH
Air Force - II
DLA-ES

INCHES	MM	INCHES	MM	INCHES	MM
.002	.05	.143	3.63	.300	7.62
.005	.13	.150	3.81	.370	9.40
.010	.25	.172	4.37	.375	9.53
.016	.41	.1875	4.76	.450	11.43
.075	1.91	.195	4.95	.511	12.98
.086	2.18	.228	5.79	.660	16.76
.09	2.29	.260	6.60	.906	23.01
				1.220	30.99

NOTES:

1. Dimensions are in inches.
2. Metric equivalents are given for general information only.
3. Unless otherwise specified, tolerances are ± 0.02 (0.51 mm) for two place decimals and ± 0.015 (0.38 mm) for three place decimals.
4. Tolerance between any two adjacent contact centers shall be ± 0.004 (0.10 mm). Tolerance between any two contact centers, other than adjacent contacts, shall be ± 0.006 (0.15 mm).
5. Contact hole details shall be in accordance with MIL-C-28748.
6. Contact identification may be located on either side of the contact hole but shall appear on the front and rear face of each insert.
7. Designed for use with MIL-C-39029/35 contacts.
8. The maximum insertion and withdrawal force (connector assembly) shall be 8.75 pounds.
9. Insert material shall be in accordance with MIL-C-28748.
10. For design feature purposes, this standard takes precedence over procurement documents referenced herein.
11. Referenced documents shall be of the issue in effect on date of invitation for bid.

REVISED (A) 23 June 1972 (B) for changes see page 2 of 2

APPROVED 20 May 1970

P.A. Navy - EC	International interest:	TITLE	MILITARY STANDARD
Other Cust. AF-85		Insert (insulator), rectangular connector, electrical 7 (size 16 and 20 crimp removable) socket contacts	MS14011
Army - CR		SUPERSEDES:	PAGE 2 OF 2
Procurement Specification MIL-C-28748			