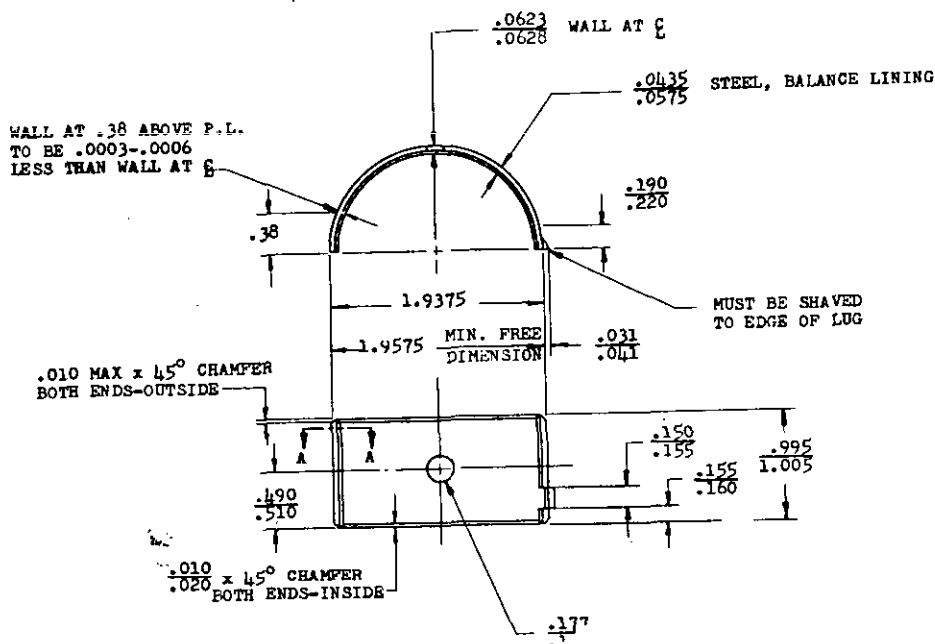


FFD. SUP CLASS
2805

REVIEW ACTIVITY : DCSC, 65

USER ACTIVITY : YD.



① CANCELED AFTER 24 JUNE 1982
NO SUPERSEDING STANDARD

ENTIRE LENGTH
BOTH SIDES

SECTION A-A

NOTES:

1. MATERIAL OF LEAD LINING, S.A.E. NO. 49
LEAD, S.A.E. NO. 1008 OR 1010
2. PLATING: LEAD-TIN PLATE I.D. (6% MIN. TIN) TO A THICKNESS .001 NOMINAL. FLASH-TIN PLATE ALL OVER AFTER LEAD-TIN PLATE.
3. IN 1.9375 DIA. INSPECTION BLOCK WITH ONE PARTING LINE FACE AGAINST A STOP AT HORIZONTAL CENTER LINE OF BLOCK AND A PRESSURE OF 1260 LBS. ON OTHER P.L. FACE. HEIGHT WILL BE .96975-.97075 ON SIDE OPPOSITE STOP.
4. REMOVE ALL BURRS.
5. MS PART NUMBER AND PART MANUFACTURER'S IDENTIFICATION TO BE CLEARLY MARKED WITHOUT INTERFERING WITH THE FUNCTION OF THE PART.
6. TOLERANCES: UNLESS OTHERWISE SPECIFIED, LINEAR MACHINED DIMENSIONS $\pm .010$; ANGULAR MACHINED DIMENSIONS $\pm 30'$. DO NOT SCALE DRAWING.
7. FOR DESIGN FEATURE PURPOSES, THIS STANDARD TAKES PRECEDENCE OVER PROCUREMENT DOCUMENTS REFERENCED HEREIN.
8. REFERENCED DOCUMENTS SHALL BE OF THE ISSUE IN EFFECT ON DATE OF INVITATIONS FOR BID.
9. ALL DIMENSIONS IN INCHES.

③ ENTIRE STANDARD REVISED

PART NO. MS 13995-1

P.A.	Army - MO(ERDL)	TITLE	MILITARY STANDARD
Other Cust	A.F. - 69 NAVY - YD	BEARING, SLEEVE: ENGINE, PLAIN, 1-13/16" X 1"	MS 13995
PROCUREMENT SPECIFICATION	SUPERSEDES	SHEET	OF
MIL-E-11275		1	1

APPROVED 19 JUNE 1952 REVISED ① 27 NOVEMBER 1953 ② 24 OCTOBER 1955 ③ 8 JULY 1966 ④ 24 JUNE 1982

This Military Standard has been approved by the Department of Defense and is mandatory for use by all Departments and Agencies of the Department of Defense. Selection for all new engineering and design applications and for repetitive use shall be made from this document.