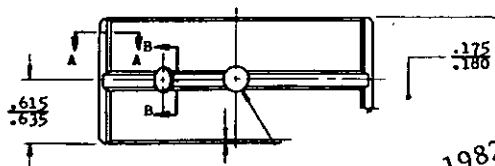
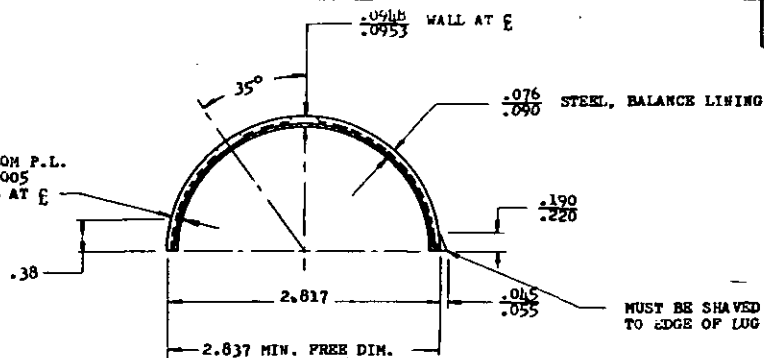


REVIEW ACTIVITY : DCSC, 69
USER ACTIVITY : YD

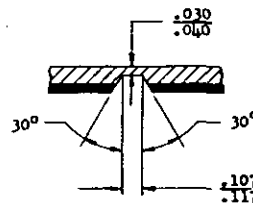
WALL AT .38 FROM P.L.
TO BE .0002-.0005
LESS THAN WALL AT E



① CANCELED AFTER 23 JUNE 1982
NO SUPERSEDING STANDARD



SECTION A-A



SECTION B-B

NOTES:

1. MATERIAL: COPPER-LEAD LINING, S.A.E. NO. 49
ON STEEL, S.A.E. NO. 1008 OR 1010
2. PLATING: LEAD-TIN PLATE I.D. (6% MIN. TIN) TO A THICKNESS .001 NOMINAL. FLASH-TIN PLATE ALL OVER AFTER LEAD-TIN PLATE.
3. IN 2.817 DIA. INSPECTION BLOCK WITH ONE PARTING LINE FACE AGAINST A STOP AT HORIZONTAL CENTER LINE OF BLOCK AND A PRESSURE OF 1895 LBS. ON OTHER P.L. FACE. HEIGHT WILL BE 1.409-1.410 ON SIDE OPPOSITE STOP.
4. REMOVE ALL BURRS.
5. MS PART NUMBER AND PART MANUFACTURER'S IDENTIFICATION TO BE CLEARLY MARKED WITHOUT INTERFERING WITH THE FUNCTION OF THE PART.
6. TOLERANCES: UNLESS OTHERWISE SPECIFIED, LINEAR MACHINED DIMENSIONS $\pm .010$; ANGULAR MACHINED DIMENSIONS $\pm 30'$. DO NOT SCALE DRAWING.
7. FOR DESIGN FEATURE PURPOSES THIS STANDARD TAKES PRECEDENCE OVER PROCUREMENT DOCUMENTS REFERENCED HEREIN.
8. REFERENCED DOCUMENTS SHALL BE OF THE ISSUE IN EFFECT ON DATE OF INVITATIONS FOR BID.
9. ALL DIMENSIONS IN INCHES.

③ ENTIRE STANDARD REVISED

P.A. Army - MO (EXDL)		TITLE		PART NO. MS 13982-1	
Other Cost		A.F. - 69 NAVY - YD		MILITARY STANDARD	
PROCUREMENT SPECIFICATION		SUPERSEDES:		MS 13982	
MIL-E-11275				SHEET 1 OF 1	

This Military Standard has been approved by the Department of Defense and is mandatory for use by all Departments and Agencies of the Department of Defense. Selection for all new engineering and design applications and for repetitive use shall be made from this document.

APPROVED 19 JUNE 1952 REVISED 27 NOVEMBER 1953 24 OCTOBER 1955 8 JULY 1966 23 JUNE 1982