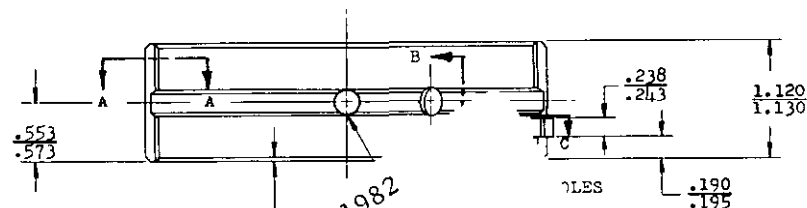
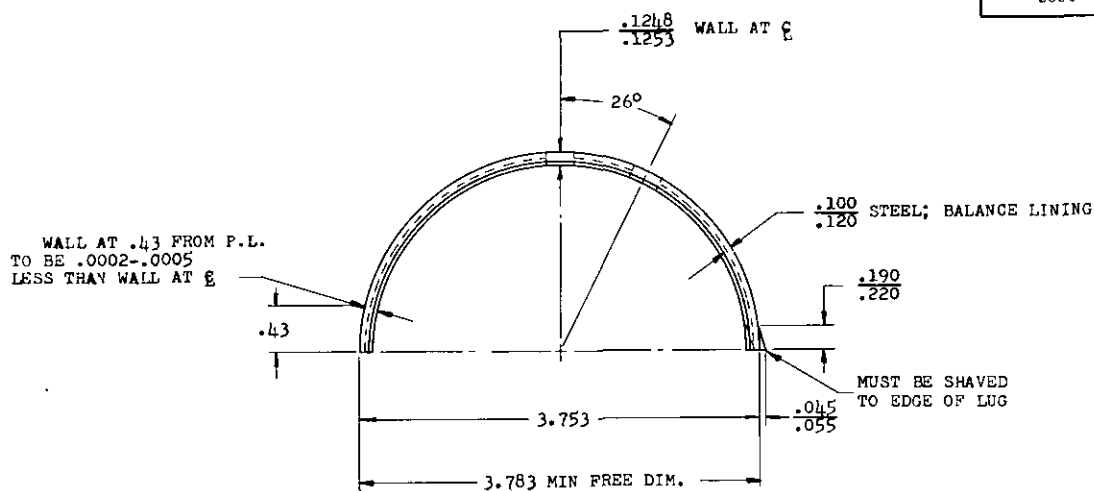


REVIEW ACTIVITY : DCSC, 69
USER ACTIVITY : YD, ATAC

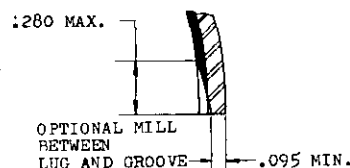
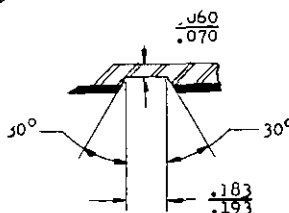
This Military Standard has been approved by the Department of Defense and is mandatory for use by all Departments and Agencies of the Department of Defense. Selection for all new applications and for repetitive use shall be made from this document.



$\frac{.010}{.020} \times 45^\circ$ CHAMFER BOTH ENDS, INSIDE & OUT

$\frac{.010}{.020} \times 45^\circ$ CHAMFER BOTH
 ENDS, INSIDE & OUT

CANCELED AFTER 8 April 1982
 NO SUPERSEDING STANDARD.



$\frac{.0005}{.0015}$ —||— ENTIRE LENGTH
BOTH SIDES

SECTION A-A

SECTION B-B

SECTION C-C

NOTES:

1. MATERIAL: COPPER-LEAD LINING, S.A.E. NO. 49
ON STEEL, S.A.E. NO. 1008 OR 1010
2. PLATING: LEAD-TIN PLATE I.D. (.6% MIN. TIN) TO A THICKNESS .001 NOMINAL. FLASH-TIN PLATE ALL
OVER AFTER LEAD-TIN PLATE.
3. IN 3.753 DIA. INSPECTION BLOCK WITH ONE PARTING LINE FACE AGAINST A STOP AT HORIZONTAL
CENTER LINE OF BLOCK AND A PRESSURE OF 2285 LBS. ON OTHER P.L. FACE. HEIGHT WILL BE
1.8780 -1.8790 ON SIDE OPPOSITE STOP.
4. REMOVE ALL BURRS.
5. MS PART NUMBER AND PART MANUFACTURER'S IDENTIFICATION TO BE CLEARLY MARKED WITHOUT
INTERFERING WITH THE FUNCTION OF THE PART.
6. TOLERANCES: UNLESS OTHERWISE SPECIFIED, LINEAR MACHINED DIMENSIONS $\pm .010$; ANGULAR
MACHINED DIMENSIONS $\pm 30'$. DO NOT SCALE DRAWING.
7. FOR DESIGN FEATURE PURPOSES, THIS STANDARD TAKES PRECEDENCE OVER PROCUREMENT DOCUMENTS
REFERENCED HEREIN.
8. REFERENCED DOCUMENTS SHALL BE OF THE ISSUE IN EFFECT ON DATE OF INVITATIONS FOR BID.
9. ALL DIMENSIONS IN INCHES.

(A) ENTIRE STANDARD REVISED

PART NO. MS 13904-1

P.A. - MO(ERDL) Other Cust A.F. - 69 NAVY - YD	TITLE BEARING, SLEEVE: ENGINE, PLAIN 3-1/2" x 1-1/8"	MILITARY STANDARD MS 13904
PROCUREMENT SPECIFICATION MIL-E-11275	SUPERSEDES:	SHEET 1 OF 1

DD FORM 672-1 (Coordinated)

PREVIOUS EDITIONS OF THIS FORM ARE OBSOLETE

③ 8 APRIL 1982

① 7 MAR 1966

REVISÉ

APPROVED 21-JAN-73 195