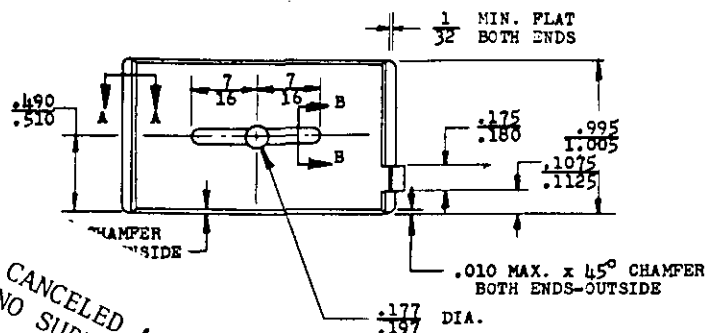
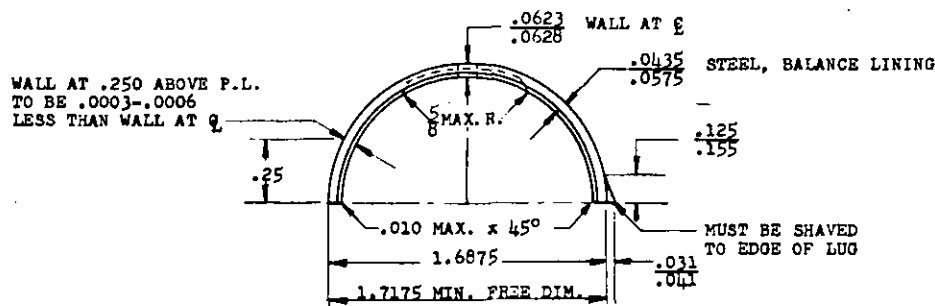
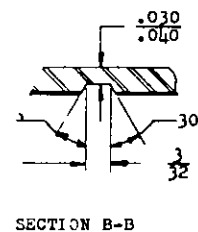
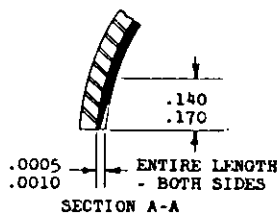


REVIEW INTEREST: DCSC. 69

USER INTEREST: YD, ATAC

FED. SUP CLASS
2805

ⓑ CANCELED AFTER 23 February 1982
NO SUPERSEDING STANDARD.



NOTES:

1. MATERIAL: COPPER-LEAD LINING. S.A.E. NO. 49 ON STEEL, S.A.E. NO. 1008, OR 1010
2. PLATING: LEAD-FIN PLATE I.D. (6% MIN. TIN) TO A THICKNESS .001 NOMINAL. FLASH-FIN PLATE ALL OVER AFTER LEAD-FIN PLATE.
3. IN 1.6875 DIA. INSPECTION BLOCK WITH ONE PARTING LINE FACE AGAINST A STOP AT HORIZONTAL CENTER LINE OF BLOCK AND A PRESSURE OF 1260 LBS. ON OTHER P.L. FACE, HEIGHT WILL BE .84475 - .84575 ON SIDE OPPOSITE STOP.
4. REMOVE ALL BURRS.
5. MS PART NUMBER AND PART MANUFACTURER'S IDENTIFICATION TO BE CLEARLY MARKED WITHOUT INTERFERING WITH THE FUNCTION OF THE PART.
6. TOLERANCES: UNLESS OTHERWISE SPECIFIED, LINEAR MACHINED DIMENSIONS $\pm .010$; ANGULAR MACHINED DIMENSIONS $\pm 30'$. DO NOT SCALE DRAWING.
7. FOR DESIGN FEATURE PURPOSES, THIS STANDARD TAKES PRECEDENCE OVER PROCUREMENT DOCUMENTS REFERENCED HEREIN.
8. REFERENCED DOCUMENTS SHALL BE OF THE ISSUE IN EFFECT ON DATE OF INVITATIONS FOR BID.
9. ALL DIMENSIONS IN INCHES.

Ⓐ ENTIRE STANDARD REVISED

PART NO. MS 13834-1

P.A. NO (ERDL) Other Cust A.F. - 60 NAVY - YD	TITLE BEARING, SLEEVE: ENGINE, PLAIN, 1-9/16" X 1"	MILITARY STANDARD MS 13834
PROCUREMENT SPECIFICATION MIL-E-11275	SUPERSEDES:	SHEET 1 OF 1