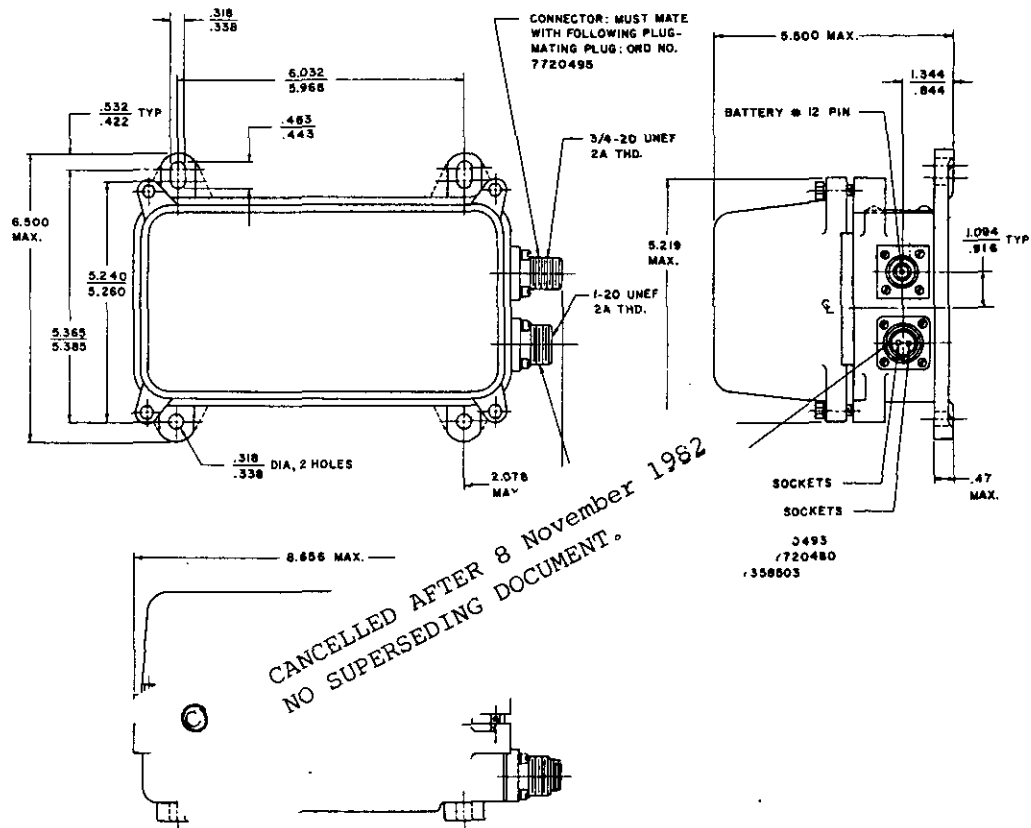


REVIEW ACTIVITIES: YD  
USER ACTIVITIES: MC, EC  
CODR "C"



# NOTES:

1. REGULATOR SHALL PROVIDE THE PERFORMANCE CHARACTERISTICS SPECIFIED IN MS13823
2. MODIFICATIONS IN OUTSIDE APPEARANCE AND CONSTRUCTION ACCEPTABLE, PROVIDED UNIT INTERCHANGEABILITY IS NOT AFFECTED.
3. REGULATORS SHOULD BE MOUNTED ON A VERTICAL SURFACE WHICH IS AT RIGHT ANGLE TO AXIS OF ROTATION OF THE ENGINE CRANKSHAFT AND PROVISIONS MADE FOR SHOCK MOUNTING WHERE REQUIRED.
4. REGULATOR SHALL BE PROVIDED WITH 1/8-27 PIPE PLUG FOR TESTING PURPOSES. LOCATION OF PLUG SHALL BE AT OPTION OF MANUFACTURER.
5. REGULATOR SHALL HAVE WARNING PLATE OR RAISED LETTERS INDICATING: "DISCONNECT LEAD AT BATTERY BEFORE SERVICING UNIT."
6. REGULATOR SHALL HAVE NEGATIVE GROUND.
7. THIS REGULATOR IS IDENTIFIED AS TYPE II, GRADE A OF REFERENCED SPECIFICATION.
8. REFERENCED DOCUMENTS SHALL BE OF THE ISSUE IN EFFECT ON DATE OF INVITATION FOR BIDS.
9. FOR DESIGN FEATURE PURPOSES, THIS STANDARD TAKES PRECEDENCE OVER PROCUREMENT DOCUMENTS REFERENCED HEREIN.
10. ALL DIMENSIONS ARE IN INCHES.

(B) TITLE CHANGED

P.A. ARMY - ME  
Other Cust  
NAVY - YD

## TITLE

REGULATOR, ENGINE GENERATOR (VOLTAGE AND CURRENT  
28 VOLT, 18 AMP)

PROCUREMENT SPECIFICATION  
MIL-R-10265

SUPERSEDES:

MS PART NO. 13805-1

MILITARY STANDARD

MS13805

SHEET 1 OF 1

This Military Standard is mandatory for use by all Departments and Agencies of the Department of Defense. Selection for all new engineering and design applications and for repetitive use shall be made from this document.

DD FORM 672-1 (Coordinated)

PREVIOUS EDITIONS OF THIS FORM ARE OBSOLETE.

\* U.S. GOVERNMENT PRINTING OFFICE: 1982-605-034-3

APPROVED 29 NOVEMBER 1956 REVISED (A) 12 SEPTEMBER 1962 (B) 29 JUNE 1967 (C) 8 November 1982