

METRIC

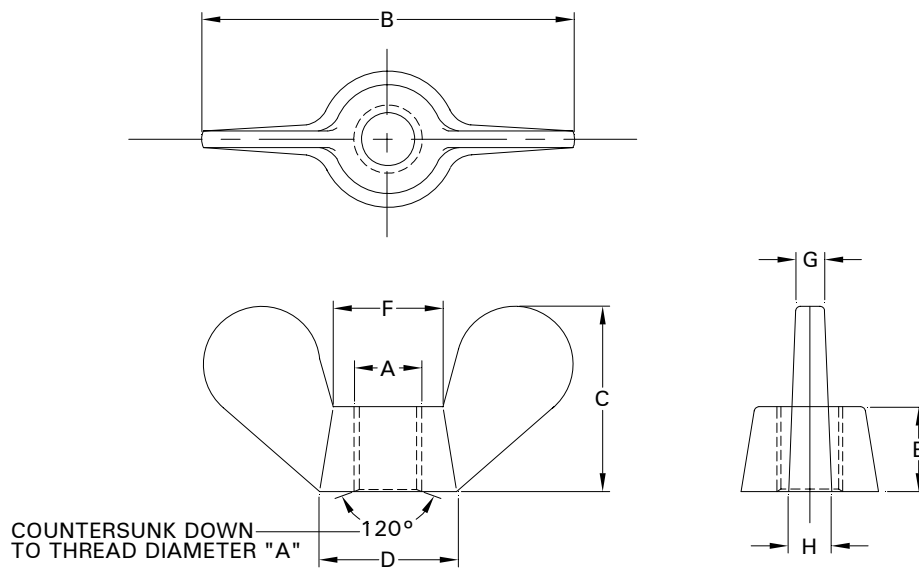
DS51402A  
31 October 2007  
 SUPERSEDING  
 DS51402  
 6 October 1999

MILITARY SPECIFICATION SHEET  
 NUT, PLAIN, WING, METRIC

Inactive for new design after 6 October 1999

This specification sheet is approved for use by all Departments and Agencies of the Department of Defense.

The requirements for acquiring the product described herein shall consist of this specification sheet and FF-N-845.



NOTES:

1. Dimensions. Unless otherwise specified, dimensions are in millimeters (mm).
2. Part number. The part number consists of the DS number plus the dash number.  
Example: DS51402-01.
3. Referenced documents shall be of the issue in effect on date of invitations for bids or request for proposal.
4. For design feature purposes, this standard takes precedence over procurement documents referenced herein.
5. Changes from previous issue. Marginal notations are not used in this revision to identify changes with respect to the previous issue due to the extent of the changes.

AMSC N/A

FSC 5310

## DS51402A

## REQUIREMENTS:

1. Type. Cold forged (type A, style 1 of procurement specification).
2. Material. Steel, carbon, 345 MPa minimum tensile strength; Brass, commercial.
3. Protective finish. Steel nuts, cadmium plated per SAE-AMS-QQ-P-416, type II, class 3 (5.1  $\mu\text{m}$  thick).
4. Threads. "M" profile, coarse pitch, tolerance class 6H in accordance with FED-STD- H28/21.

TABLE I. Dimensions and dash numbers

Dash Number	Material	A	B	C	D	E	F	G	H
-01	Steel	M2X0.4	$20 \pm 0.65$	$10 \pm 0.45$	$8 \pm 0.45$	$5 \pm 0.38$	$6 \pm 0.38$	$1.6 \pm 0.30$	$2 \pm 0.30$
-02	Brass								
-03	Steel	M2.5X0.45	$20 \pm 0.65$	$10 \pm 0.45$	$8 \pm 0.45$	$5 \pm 0.38$	$6 \pm 0.38$	$1.6 \pm 0.30$	$2 \pm 0.30$
-04	Brass								
-05	Steel	M3X0.5	$20 \pm 0.65$	$10 \pm 0.45$	$8 \pm 0.45$	$5 \pm 0.38$	$6 \pm 0.38$	$1.6 \pm 0.30$	$2 \pm 0.30$
-06	Brass								
-07	Steel	M4X0.7	$20 \pm 0.65$	$10 \pm 0.45$	$8 \pm 0.45$	$5 \pm 0.38$	$6 \pm 0.38$	$1.6 \pm 0.30$	$2 \pm 0.30$
-08	Brass								
-09	Steel	M5X0.8	$25 \pm 0.65$	$12 \pm 0.55$	$10 \pm 0.45$	$6 \pm 0.38$	$8 \pm 0.45$	$2 \pm 0.30$	$2.5 \pm 0.30$
-10	Brass								
-11	Steel	M6X1	$32 \pm 0.80$	$16 \pm 0.55$	$12 \pm 0.55$	$8 \pm 0.45$	$10 \pm 0.45$	$2.5 \pm 0.30$	$3 \pm 0.30$
-12	Brass								
-13	Steel	M8X1.25	$40 \pm 0.80$	$20 \pm 0.65$	$16 \pm 0.55$	$10 \pm 0.45$	$12 \pm 0.55$	$3 \pm 0.30$	$4 \pm 0.38$
-14	Brass								
-15	Steel	M10X1.25	$50 \pm 0.80$	$25 \pm 0.65$	$20 \pm 0.65$	$12 \pm 0.55$	$16 \pm 0.55$	$4 \pm 0.38$	$5 \pm 0.38$
-16	Brass								
-17	Steel	M12X1.75	$64 \pm 0.95$	$32 \pm 0.80$	$23 \pm 0.65$	$14 \pm 0.55$	$19 \pm 0.65$	$5 \pm 0.38$	$6 \pm 0.38$
-18	Brass								
-19	Steel	M16X2	$72 \pm 0.95$	$36 \pm 0.80$	$28 \pm 0.65$	$16 \pm 0.55$	$22 \pm 0.65$	$6 \pm 0.38$	$7 \pm 0.45$
-20	Brass								
-21	Steel	M20X2.5	$90 \pm 1.1$	$45 \pm 0.80$	$36 \pm 0.80$	$20 \pm 0.65$	$28 \pm 0.65$	$7 \pm 0.45$	$9 \pm 0.45$
-22	Brass								
-23	Steel	M24X3	$112 \pm 1.1$	$56 \pm 0.95$	$45 \pm 0.80$	$24 \pm 0.65$	$36 \pm 0.80$	$9 \pm 0.45$	$11 \pm 0.55$
-24	Brass								

Custodians:

Army – AR

Air Force – 99

Preparing activity:

DLA – IS

(Project 5310-2725-000)

NOTE: The activities listed above were interested in this document as of the date of this document. Since organizations and responsibilities can change, you should verify the currency of the information above using the ASSIST Online database at <http://assist.daps.dla.mil/>.