

FED SUP CLASS
5340

TYPE W HALF HINGE
KNUCKLE SHALL
BE ON RIGHT HAND
END OF HALF HINGE
AS SHOWN

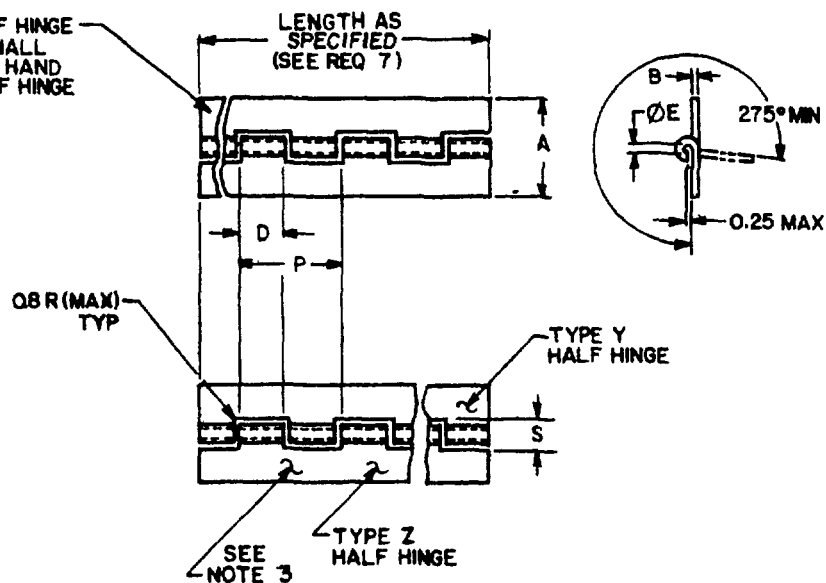


TABLE I DASH NUMBERS AND DIMENSIONS

DASH NO COMPLETE HINGE			A WIDTH OPEN +0.40	R 1/ THICKNESS		Ø F HOLE DIA +0.20 -0.03		T SLOT DEPTH		D LOOP +0.03 -0.20	P PITCH	STOCK LENGTH		PIN DIA	
AL ALLOY		CRES		AL ALLOY	CRES	AL ALLOY	CRES	AL ALLOY	CRES			AL ALLOY	CRES	AL ALLOY HINGE	CRES HINGE
UN- TREATED	ANO- DIZED														
-1	-P1	-C1	20	0.80	0.80	1.68	1.68	4.4	4.4	14.7	30	1020	1440	1.6	1.6
-2	-P2	-C2	25	0.80	0.80	1.68	1.68	4.4	4.4	14.7	30	1020	1440	1.6	1.6
-3	-P3	-C3	28	1.00	1.00	2.58	2.58	6.1	6.1	14.7	30	2040	1440	2.5	2.5
-4	-P4	-C4	32	1.00	1.20	2.58	3.08	6.1	7.3	14.7	30	2040	1440	2.5	3.0
-5	-P5	-C5	40	1.00	1.60	2.58	3.08	6.1	8.4	14.7	30	2040	1440	2.5	3.0
-6	-P6	-C6	45	1.20	1.60	2.58	3.08	6.6	8.4	14.7	30	2040	2040	2.5	3.0
-7	-P7	-C7	50	1.20	1.60	2.58	5.08	6.6	11.0	14.7	30	2040	2040	2.5	5.0
-8	-P8	-C8	60	1.60	1.60	5.08	5.08	6.6	11.0	18.7	38	2280	2280	5.0	5.0
-9	-P9	-C9	70	1.60	1.60	5.08	5.08	6.6	11.0	18.7	38	2280	2280	5.0	5.0

1/ SEE NOTE 4

METRIC

REVISED
APPROVED 28 OCT 83

P A Other Cost	AS	INTERNATIONAL INTEREST	TITLE HINGE, CONTINUOUS, METRIC	MILITARY STANDARD
				DS14269(AS)
PROCUREMENT SPECIFICATION NONE			SUPERSEDES:	PAGE 1 OF 2

USER ACTIVITIES

REVIEWER ACTIVITIES
DLA-1S

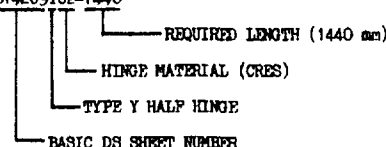
This military standard is approved for use by Naval Air Systems Command,
Department of the Navy, and is available for use by all Departments and
Agencies of the Department of Defense.

FED SUP CLASS
5340

REQUIREMENTS.

1. MATERIAL ALUMINUM ALLOY 5052-H32 IN ACCORDANCE WITH AMS 4016G-78 OR 5052-H34 IN ACCORDANCE WITH AMS 4017G-78, OR CORROSION-RESISTANT STEEL IN ACCORDANCE WITH AMS 5510.
2. FINISH. ALUMINUM ALLOY: UNTREATED OR ANODIZED PER MIL-A-8625, TYPE II AS REQUIRED SEE CODING
3. COMPLETE HINGE SHALL BE FURNISHED WITH A PIN OF THE SAME LENGTH
4. HINGE PINS SHALL BE IN ACCORDANCE WITH DS14270 (AS). CADMIUM PLATED CORROSION-RESISTANT STEEL PINS SHALL BE USED WITH ALUMINUM ALLOY HINGES, AND PASSIVATED CORROSION-RESISTANT STEEL PINS SHALL BE USED WITH CORROSION-RESISTANT STEEL HINGES.
5. TOLERANCE ON PITCH (P) SHALL BE ± 0.2 mm AND SHALL BE NON-CUMULATIVE
6. END KNUCKLES AND TANGS MUST BE EQUAL IN LENGTH WITHIN 0.5 mm.
7. PART NUMBER. THE BASIC DS SHEET NUMBER IS FOLLOWED BY A CODE LETTER W, Z OR Y INDICATING A HALF-HINGE TYPE, IF REQUIRED, FOLLOWED BY A DASH NUMBER TAKEN FROM TABLE I. THIS IS FOLLOWED BY A STOCK LENGTH NOT TO EXCEED LENGTH SHOWN IN TABLE I.

EXAMPLES: DS14269YC2-1440



- DS14269-2-1020 INDICATES COMPLETE HINGE, ALUMINUM ALLOY, UNTREATED, 25 mm WIDE, (OPEN WIDTH OF COMPLETE HINGE) 1020 mm LONG, CADMIUM PLATED CORROSION-RESISTANT STEEL PIN
- DS14269W2-1020 INDICATES TYPE "W" HALF HINGE, ALUMINUM ALLOY, UNTREATED, 25 mm WIDE (OPEN WIDTH OF COMPLETE HINGE) 1020 mm LONG, WITHOUT PIN
- DS14269-P2-1020 INDICATES COMPLETE HINGE, ALUMINUM ALLOY, ANODIZED, 25 mm WIDE, (OPEN WIDTH OF COMPLETE HINGE) 1020 mm LONG, CADMIUM PLATED CORROSION-RESISTANT STEEL PIN
- DS14269-C2-1440 INDICATES COMPLETE HINGE, CORROSION-RESISTANT STEEL, 25 mm WIDE, (OPEN WIDTH OF COMPLETE HINGE) 1440 mm LONG, CORROSION-RESISTANT STEEL PIN
- DS14269YC2-1440 INDICATES TYPE "Y" HALF HINGE, CORROSION-RESISTANT STEEL, 25 mm WIDE (OPEN WIDTH OF COMPLETE HINGE), 1440 mm LONG, WITHOUT PIN

NOTES.

1. DIMENSIONS ARE IN MILLIMETERS. UNLESS OTHERWISE SPECIFIED, TOLERANCE SHALL BE ± 0.4 mm
2. REMOVE ALL BURRS AND SHARP EDGES
3. EACH LEAF SHALL BE MARKED WITH THE BASIC NUMBER OF THIS STANDARD AND THE DASH NUMBER FROM TABLE I FOR THE APPROPRIATE WIDTH AND MATERIAL. THE MARKING SHALL BE AT REGULAR INTERVALS ALONG LENGTH OF HINGE SO THAT ANY 76 mm LENGTH WILL HAVE AT LEAST ONE COMPLETE IDENTIFICATION NUMBER. THE CHARACTERS SHALL BE STAMPED NOT EXCEEDING 0.25 mm IN DEPTH AND NOT LESS THAN 1.5 mm HIGH. LENGTH MARKING IS NOT REQUIRED IN IDENTIFICATION
4. TOLERANCE ON THICKNESS OF MATERIAL SHALL BE AS FOLLOWS
CRES IN ACCORDANCE WITH ANSI/ASTM A109M-77
ALUMINUM ALLOY. IN ACCORDANCE WITH ANSI/ASTM H35.2M-78
5. REFERENCED DOCUMENTS SHALL BE OF THE ISSUE IN EFFECT ON DATE OF INVITATION FOR BIDS OR REQUEST FOR PROPOSAL EXCEPT THAT REFERENCED ADOPTED INDUSTRY DOCUMENTS SHALL GIVE THE DATE OF THE ISSUE ADOPTED
6. FOR DESIGN FEATURE PURPOSES, THIS STANDARD TAKES PRECEDENCE OVER PROCUREMENT DOCUMENTS REFERENCED HEREIN

P A AS Other Cust	INTERNATIONAL INTEREST	TITLE HINGE, CONTINUOUS, METRIC	MILITARY STANDARD
			DS14269(AS)
PROCUREMENT SPECIFICATION NONE	SUPERSEDES:	PAGE 2 OF 2	

DLA-15

This military standard is approved for use by Naval Air Systems Command, Department of the Navy, and is available for use by all Departments and Agencies of the Department of Defense.

APPROVED 28 OCT 83 REVISED