

MIL-STD-1651
NOTICE 1
10 June 1976

MILITARY STANDARD

INSERT ARRANGEMENTS FOR MIL-C-5015,
MIL-C-22992 (CLASSES C, J, AND R),
AND MIL-C-83723 (SERIES II)
ELECTRICAL CONNECTORS

TO ALL HOLDERS OF MIL-STD-1651:

1. THE FOLLOWING PAGES OF MIL-STD-1651 HAVE BEEN REVISED AND SUPERSEDE THE PAGES LISTED:

NEW PAGE	DATE	SUPERSEDED PAGE	DATE
1		(REPRINTED WITHOUT CHANGE)	27 June 1975
2	10 June 1976	2	27 June 1975
10.1	10 June 1976	10.1	27 June 1975
20.1	10 June 1976	20.1	27 June 1975
20.2	10 June 1976	20.2	27 June 1975
30.1	10 June 1976	30.1	27 June 1975
30.2	10 June 1976	30.2	27 June 1975
30.3	10 June 1976	30.3	27 June 1975
30.4		(REPRINTED WITHOUT CHANGE)	27 June 1975
40.1	10 June 1976	40.1	27 June 1975
40.2	10 June 1976	40.2	27 June 1975
40.3	10 June 1976	40.3	27 June 1975
40.4	10 June 1976	40.4	27 June 1975
40.5	10 June 1976	40.5	27 June 1975
40.6	10 June 1976	40.6	27 June 1975
40.7	10 June 1976	40.7	27 June 1975
50.1	10 June 1976	50.1	27 June 1975
50.2	10 June 1976	50.2	27 June 1975
50.3	10 June 1976	50.3	27 June 1975
50.4	10 June 1976	50.4	27 June 1975
50.5	10 June 1976	50.5	27 June 1975
50.6		(REPRINTED WITHOUT CHANGE)	27 June 1975
50.7		(REPRINTED WITHOUT CHANGE)	27 June 1975
50.8	10 June 1976	50.8	27 June 1975
50.9	10 June 1976	50.9	27 June 1975

2. The following page of MIL-STD-1651 is to be added:

NEW PAGE	DATE
----------	------

110.25

3. RETAIN THIS NOTICE AND INSERT BEFORE TABLE OF CONTENTS.

4. Holders of MIL-STD-1651 will verify that page changes and additions indicated above have been entered. This notice page will be retained as a check sheet. This issuance, together with appended pages, is a separate publication. Each notice is to be retained by stocking points until the Military Standard is completely revised or canceled.

Custodians:

Army - EL
Navy - AS
Air Force - 85

Review activities:

Army - MU
Navy - EC
Air Force - 11, 15, 17, 80

Preparing activity:

Navy - AS

Agent:

DSA - ES

(Project 5935-2038)

MIL-STD-1651
27 June 1975

1. SCOPE

1.1 This standard covers insert arrangements for use with MIL-C-5015, MIL-C-22992 (classes C, J, and R), and MIL-C-83723 (series 11) electrical connectors.

2. REFERENCED DOCUMENTS

2.1 The issues of the following documents in effect on the date of invitation for bids form a part of this standard to the extent specified herein.

SPECIFICATIONS

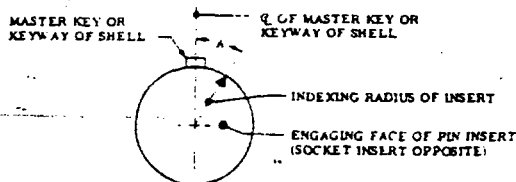
MILITARY

- MIL-C-5015 - Connectors, Electric, "AN" Type.
- MIL-C-22992 - Connectors, Plugs and Receptacles, Electrical, Waterproof, Quick Disconnect, Heavy Duty Type, General Specification for.
- MIL-C-83723 - Connectors, Electrical, (Circular, Environment Resisting), Receptacles and Plugs, General Specification for.

(Copies of specifications, standards, drawings, and publications required by suppliers in connection with specific procurement functions should be obtained from the procuring activity or as directed by the contracting officer.)

3. DEFINITIONS

3.1 The terms used in this standard are generally accepted by the electrical and electronics industries and commonly used in electrical connector engineering practice.



4. GENERAL REQUIREMENTS

Not applicable.

5. DETAIL REQUIREMENTS

5.1 Dimensions. Dimensions shall be in accordance with the applicable section of this standard and the following dimensional data:






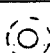

- (a) Dimensioning and tolerancing in accordance with ANSI Y14.5-1973. Dimensions are true position and are in inches.
- (b) Metric equivalents (to the nearest .01 mm) are given for general information only and are based upon 1 inch = 25.4 mm.
- (c) Dimensions and markings shown are for engaging face of pin insert. Socket insert is opposite.
- (d) The following tolerances apply to insert installed in shell:
 - 1. The center of each hole in insert for crimp contact connectors shall be located at true position within .014 dia. $\oplus .014 \text{ dia.}$
 - 2. The center of engaging end of each contact shall be located in true position within .024 dia. $\oplus .024 \text{ dia.}$
- (e) Unless otherwise indicated, dimensions are symmetrical about centerline. \uparrow indicates ϕ of insert arrangement.
- (f) Each insert arrangement is shown in the "normal position" in the shell.

MIL-STD-1651
10 June 1976

5.2 Marking. Marking shall be in accordance with MIL-C-5015, MIL-C-22992, or MIL-C-83723, as applicable, and as shown in the applicable section of this military standard.

5.3 Contacts. Solder contacts shall be in accordance with MIL-C-5015, MIL-C-22992, or MIL-C-83723, as applicable. Crimp contacts shall be in accordance with table 1. Contact sizes are designated by the symbols shown in table 1.

TABLE 1. Contact designation.

Crimp or solder contacts		Crimp contact part numbers		
		MIL-C-5015		MIL-C-83723 (series II)
		MS3400's connectors	MS3450's connectors	
Size	Symbol	MIL-C-23216 contacts	MIL-C-23216 contacts	
0		MS90453-0-0 MS90454-0-0	MS3162-0-0 MS3163-0-0	M83723-29T0 M83723-30T0
4		MS90453-4-4 MS90454-4-4	MS3162-4-4 MS3163-4-4	M83723-29T4 M83723-30T4
8		MS90453-8-8 MS90454-8-8	MS3162-8-8 MS3163-8-8	M83723-29T8 M83723-30T8
12		MS90453-12-12 MS90454-12-12	MS3162-12-12 MS3163-12-12	M83723-29T12 M83723-30T12
16		MS90453-16-16 MS90454-16-16	MS3162-16-16 MS3163-16-16	M83723-29T16 M83723-30T16
16S		NA	MS3163-16S-16	M83723-30T17
-8- (shielded)		MS14056		N/A
Video coax		MS33695		

5.4 International standardization agreements. Certain insert arrangements of this standard, identified by *, #, and †, are the subject of the related international standardization agreements listed under "International Interest". When revision or cancellation of this standard is proposed which will effect or violate the international agreement concerned, the preparing activity will take appropriate reconciliation action through international standardization channels, including Departmental Standardization Offices, if required.

INTL INTEREST

- * ASCC 12/44
- # NEPR 28
- † NEPR 44

MIL-STD-1651

10 June 1976

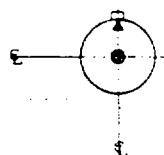
SECTION 10

INSERT ARRANGEMENT, ELECTRICAL CONNECTORS

SHELL SIZES 8, 8S

NOTES:

1. Shell size 8 is identical to shell size 8S and applies only to MIL-C-83723, series II.
2. Shell size 8S applies only to MIL-C-5015.
3. Section 10 is not applicable to MIL-C-22992.



ALTERNATE INSERT POSITIONS			
A DEGREES			
W	X	Y	Z
—	—	—	—

Shell size	Arrangement number	Service rating	Number of contacts	Size contacts	Symbol	Contact location	Supersedes document
8, 8S	-1	A	1	16 16S		---	MS33680-1

Supersedes page 10.1 of 27 June 1975

MIL-STD-1651

10 June 1976

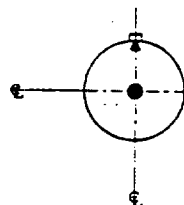
SECTION 20

INSERT ARRANGEMENT, ELECTRICAL CONNECTORS

SHELL SIZES 10, 10S, 10SL, AND 11

NOTES:

1. Shell size 10 is identical to 10S, and applies only to MIL-C-83723, series II.
2. Shell size 10S applies only to MIL-C-5015.
3. Shell size 10SL applies only to MIL-C-5015.
4. Shell size 11 is identical to 10SL, and applies only to MIL-C-83723, series II.
5. Section 20 is not applicable to MIL-C-22992.



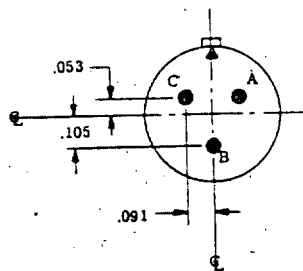
ALTERNATE INSERT POSITIONS			
A DEGREES			
W	X	Y	Z
—	—	—	—

Shell size	Arrangement number	Service rating	Number of contacts	Size contacts	Symbol	Contact location	Supersedes document
10, 10S	-2	A	1	16 16S		---	MS33680-2

Supersedes page 20.1 of 27 June 1975

20.1

MIL-STD-1651
10 June 1976

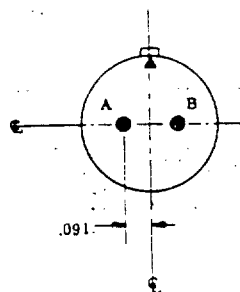


ALTERNATE INSERT POSITIONS			
A DEGREES			
W	X	Y	Z
—	—	—	—

* #

Shell size	Arrangement number	Service rating	Number of contacts	Size contacts	Symbol	Contact location	Connector class	Supersedes document
10SL, 11	-3	INST	3	16 16S		All	K	MS33680-3
		A					All others	

INACTIVE FOR DESIGN
AFTER 17 DEC 1958



ALTERNATE INSERT POSITIONS			
A DEGREES			
W	X	Y	Z
—	—	—	—

Shell size	Arrangement number	Service rating	Number of contacts	Size contacts	Symbol	Contact location	Supersedes document
10SL, 11	-4	A	2	16 16S		All	MS33680-4

Supersedes page 20.2 of 27 June 1975

MIL-STD-1651

10 June 1976

SECTION 30

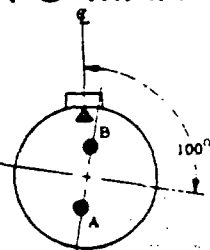
INSERT ARRANGEMENT, ELECTRICAL CONNECTORS

SHELL SIZES 12, 12S, AND 13

NOTES:

1. Shell size 12 applies to MIL-C-5015, MIL-C-22992, and MIL-C-83723, series II.
2. Shell size 12S applies only to MIL-C-5015.
3. Shell size 13 is identical to 12S, and applies only to MIL-C-83723, series II.

INACTIVE FOR DESIGN
AFTER 8 MAR 1945



CONTACT ARRANGEMENT AND DIMENSIONS
IDENTICAL TO 12S-3 EXCEPT FOR POSITION OF
INSERT IN SHELL

ALTERNATE INSERT POSITIONS			
A DEGREES			
W	X	Y	Z
—	—	—	—

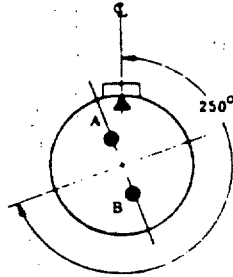
Shell size	Arrangement number	Service rating	Number of contacts	Size contacts	Symbol	Contact location	Supersedes document
12S, 13	-1	A	2	16 16S	●	All	MS33681-1

Supersedes page 30.1 of 27 June 1975

MIL-STD-1651

10 June 1976

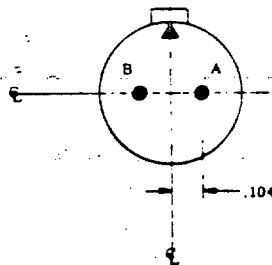
INACTIVE FOR DESIGN AFTER 8 MAR 1945



CONTACT ARRANGEMENT AND DIMENSIONS
IDENTICAL TO 12S-3 EXCEPT FOR POSITION OF
INSERT IN SHELL

ALTERNATE INSERT POSITIONS			
A DEGREES			
W	X	Y	Z

Shell size	Arrangement number	Service rating	Number of contacts	Size contacts	Symbol	Contact location	Supersedes document
12S, 13	-2	A	2	16 16S		All	MS33681-2



FOR OTHER INSERT POSITIONS SEE 12S-1 AND 12S-2

ALTERNATE INSERT POSITIONS			
A DEGREES			
W	X	Y	Z
70	145	215	290

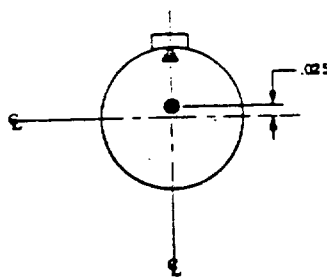
* #

Shell size	Arrangement number	Service rating	Number of contacts	Size contacts	Symbol	Contact location	Supersedes document
12S, 13	-3	A	2	16 16S		All	MS33681-3

Supersedes page 30.2 of 27 June 1975

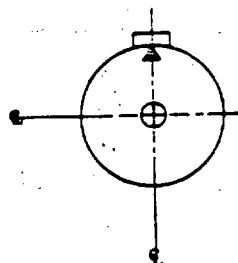
30.2

MIL-STD-1651
10 June 1976



ALTERNATE INSERT POSITIONS			
A DEGREES			
W	X	Y	Z
—	—	—	—

Shell size	Arrangement number	Service rating	Number of contacts	Size contacts	Symbol	Contact location	Supersedes document
12S, 13	-4	D	1	16 16S	●	---	MS33681-4



ALTERNATE INSERT POSITIONS			
A DEGREES			
W	X	Y	Z
—	—	—	—

Shell size	Arrangement number	Service rating	Number of contacts	Size contacts	Symbol	Contact location	Supersedes document
12	-5	D	1	12	⊕	---	MS33681-5

Supersedes page 30.3 of 27 June 1975

MIL-STD-1651
27 June 1975

CANCELLED
AFTER
8 MAR 1945

ALTERNATE INSERT POSITIONS A DEGREES			
W	X	Y	Z
---	---	---	---

Shell size	Arrangement number	Service rating	Number of contacts	Size contacts	Symbol	Contact location	Supersedes document
12S; 13	-6	---	---	---	---	---	MS33681-6

MIL-STD-1651

10 June 1976

SECTION 40

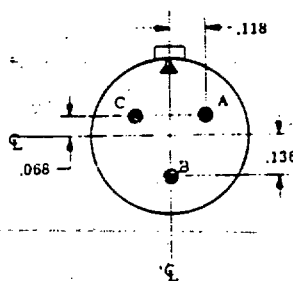
INSERT ARRANGEMENT, ELECTRICAL CONNECTORS

SHELL SIZES 14, 14S, AND 15

NOTES:

1. Shell size 14 applies to MIL-C-5015, MIL-C-22992, and MIL-C-83723, series II.
2. Shell size 14S applies only to MIL-C-5015.
3. Shell size 15 is identical to 14S, and applies only to MIL-C-83723, series II.

INACTIVE FOR DESIGN
AFTER 17 APR 1945



FOR OTHER INSERT POSITIONS SEE 14S-12 AND 14S-13

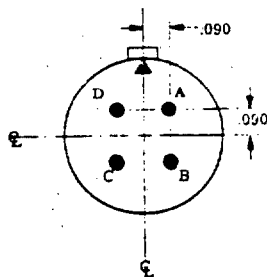
ALTERNATE INSERT POSITIONS			
A DEGREES			
W	X	Y	Z
—	—	—	—

Shell size	Arrangement number	Service rating	Number of contacts	Size contacts	Symbol	Contact location	Supersedes document
14S, 15	-1	A	3	16 16S	●	All	MS33682-1

Supersedes page 40.1 of 27 June 1975

MIL-STD-1651

10 June 1976

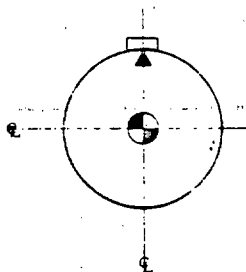


FOR OTHER INSERT POSITIONS SEE 14S-10 AND 14S-11

ALTERNATE INSERT POSITIONS			
A DEGREES			
W	X	Y	Z
—	120	240	—

* # †

Shell size	Arrangement number	Service rating	Number of contacts	Size contacts	Symbol	Contact location	Supersedes document
14S, 15	-2	INST	4	16 16S		All	MS33682-2



ALTERNATE INSERT POSITIONS			
A DEGREES			
W	X	Y	Z
—	—	—	—

†

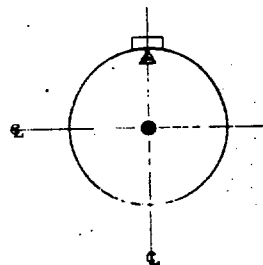
Shell size	Arrangement number	Service rating	Number of contacts	Size contacts	Symbol	Contact location	Supersedes document
14	-3	A	1	8		---	MS33682-3

Supersedes page 40.2 of 27 June 1975

MIL-STD-1651

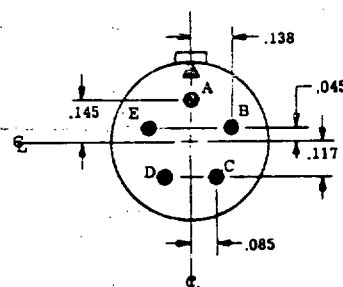
10 June 1976

INACTIVE FOR DESIGN
AFTER 13 MAY 1954



ALTERNATE INSERT POSITIONS			
A DEGREES			
W	X	Y	Z
—	—	—	—

Shell size	Arrangement number	Service rating	Number of contacts	Size contacts	Symbol	Contact location	Supersedes document
14S, 15	-4	D	1	16 16S		---	MS33682-4



ALTERNATE INSERT POSITIONS			
A DEGREES			
W	X	Y	Z
—	110	—	—

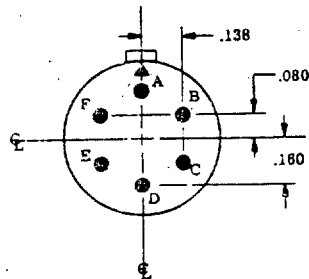
†

Shell size	Arrangement number	Service rating	Number of contacts	Size contacts	Symbol	Contact location	Supersedes document
14S, 15	-5	INST	5	16 16S		A11	MS33682-5

Supersedes page 40.3 of 27 June 1975
40.3

MIL-STD-1651

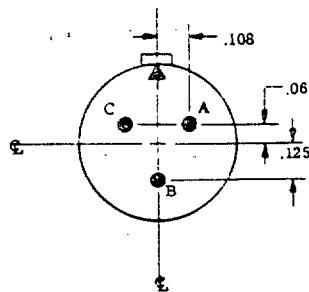
10 June 1976



ALTERNATE INSERT POSITIONS			
A DEGREES			
W	X	Y	Z
—	—	—	—

* #

Shell size	Arrangement number	Service rating	Number of contacts	Size contacts	Symbol	Contact location	Supersedes document
14S, 15	-6	INST	6	16 16S		All	MS33682-6



ALTERNATE INSERT POSITIONS			
A DEGREES			
W	X	Y	Z
90	180	270	—

* # †

Shell size	Arrangement number	Service rating	Number of contacts	Size contacts	Symbol	Contact location	Supersedes document
14S, 15	-7	A	3	16 16S		All	MS33682-7

Supersedes page 40.4 of 27 June 1975

MIL-STD-1651

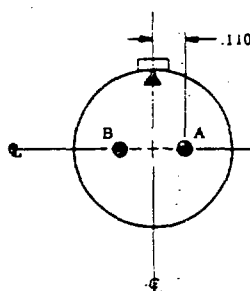
10 June 1976

THIS ARRANGEMENT NUMBER NOT TO BE USED

ALTERNATE INSERT POSITIONS			
A DEGREES			
W	X	Y	Z
---	---	---	---

Shell size	Arrangement number	Service rating	Number of contacts	Size contacts	Symbol	Contact location	Supersedes document
14S, 15	-8	---	---	---	---	---	MS33682-8

INACTIVE FOR DESIGN
AFTER 13 MAY 1954



ALTERNATE INSERT POSITIONS			
A DEGREES			
W	X	Y	Z
70	145	215	290

Shell size	Arrangement number	Service rating	Number of contacts	Size contacts	Symbol	Contact location	Supersedes document
14S, 15	-9	A	2	16 16S		All	MS33682-9

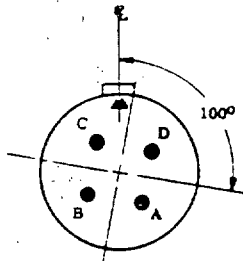
Supersedes page 40.5 of 27 June 1975

40.5

MIL-STD-1651

10 June 1976

INACTIVE FOR DESIGN AFTER 17 APR 1945

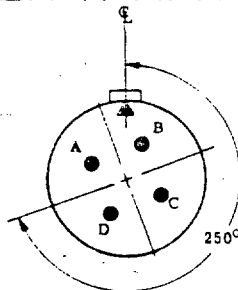


CONTACT ARRANGEMENT AND DIMENSIONS
IDENTICAL TO 14S-2 EXCEPT FOR POSITION OF
INSERT IN SHELL

ALTERNATE INSERT POSITIONS			
A DEGREES			
W	X	Y	Z
—	—	—	—

Shell size	Arrangement number	Service rating	Number of contacts	Size contacts	Symbol	Contact location	Supersedes document
14S, 15	-10	INST	4	16 16S		All	MS33682-10

INACTIVE FOR DESIGN AFTER 17 APR 1945



CONTACT ARRANGEMENT AND DIMENSIONS
IDENTICAL TO 14S-2 EXCEPT FOR POSITION OF
INSERT IN SHELL

ALTERNATE INSERT POSITIONS			
A DEGREES			
W	X	Y	Z
—	—	—	—

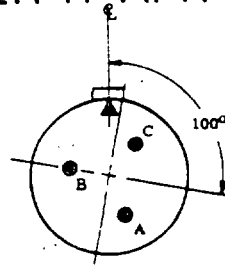
Shell size	Arrangement number	Service rating	Number of contacts	Size contacts	Symbol	Contact location	Supersedes document
14S, 15	-11	INST	4	16 16S		All	MS33682-11

Supersedes page 40.6 of 27 June 1975

40.6

MIL-STD-1651
10 June 1976

INACTIVE FOR DESIGN AFTER 17 APR 1945

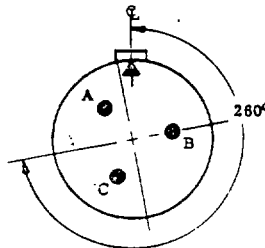


CONTACT ARRANGEMENT AND DIMENSIONS
IDENTICAL TO 14S-1 EXCEPT FOR POSITION OF
INSERT IN SHELL

ALTERNATE INSERT POSITIONS			
A DEGREES			
W	X	Y	Z
—	—	—	—

Shell size	Arrangement number	Service rating	Number of contacts	Size contacts	Symbol	Contact location	Supersedes document
14S, 15	-12	A	3	16 16S		A11	MS33682-12

INACTIVE FOR DESIGN AFTER 17 APR 1945



CONTACT ARRANGEMENT AND DIMENSIONS
IDENTICAL TO 14S-1 EXCEPT FOR POSITION
OF INSERT IN SHELL

ALTERNATE INSERT POSITIONS			
A DEGREES			
W	X	Y	Z
—	—	—	—

Shell size	Arrangement number	Service rating	Number of contacts	Size contacts	Symbol	Contact location	Supersedes document
14S, 15	-13	A	3	16 16S		A11	MS33682-13

Supersedes page 40.7 of 27 June 1975

MIL-STD-1651

10 June 1976

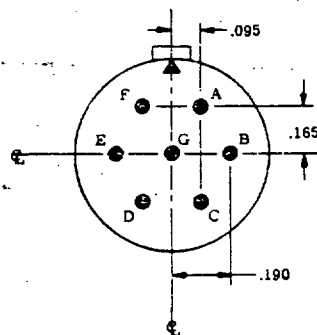
SECTION 50

INSERT ARRANGEMENT, ELECTRICAL CONNECTORS

SHELL SIZES 16, 16S, AND 17

NOTES:

1. Shell size 16 applies to MIL-C-5015, MIL-C-22992, and MIL-C-83723, series II.
2. Shell size 16S applies only to MIL-C-5015.
3. Shell size 17 is identical to 16S, and applies only to MIL-C-83723, series II.



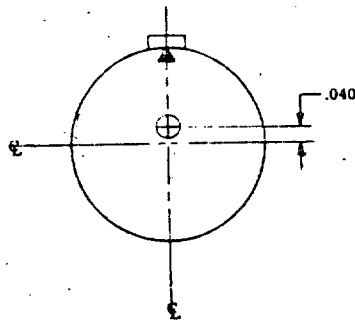
ALTERNATE INSERT POSITIONS			
A DEGREES			
W	X	Y	Z
80	—	—	280

* #

Shell size	Arrangement number	Service rating	Number of contacts	Size contacts	Symbol	Contact location	Supersedes document
16S, 17	-1	A	7	16 16S		All	MS33683-1

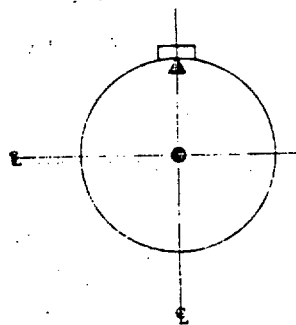
Supersedes page 50.1 of 27 June 1975

MIL-STD-1651
10 June 1976



ALTERNATE INSERT POSITIONS			
A DEGREES			
W	X	Y	Z
—	—	—	—

Shell size	Arrangement number	Service rating	Number of contacts	Size contacts	Symbol	Contact location	Supersedes document
16	-2	E	1	12		---	MS33683-2



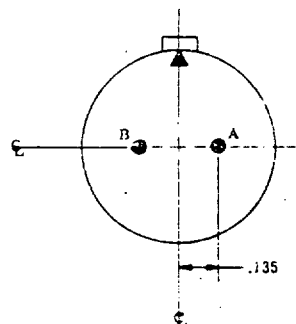
ALTERNATE INSERT POSITIONS			
A DEGREES			
W	X	Y	Z
—	—	—	—

Shell size	Arrangement number	Service rating	Number of contacts	Size contacts	Symbol	Contact location	Supersedes document
16S, 17	-3	E	1	16 16S		---	MS33683-3

Supersedes page 50.2 of 27 June 1975
50.2

MIL-STD-1651

10 June 1976

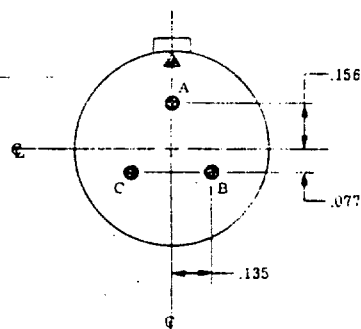


FOR OTHER INSERT POSITIONS SEE 16-15 AND 16-16

ALTERNATE INSERT POSITIONS			
A DEGREES			
W	X	Y	Z
35	110	250	325

Shell size	Arrangement number	Service rating	Number of contacts	Size contacts	Symbol	Contact location	Supersedes document
16S, 17	-4	D	2	16 16S		All	MS33683-4

INACTIVE FOR DESIGN
AFTER 13 MAY 1954



ALTERNATE INSERT POSITIONS			
A DEGREES			
W	X	Y	Z
70	145	215	290

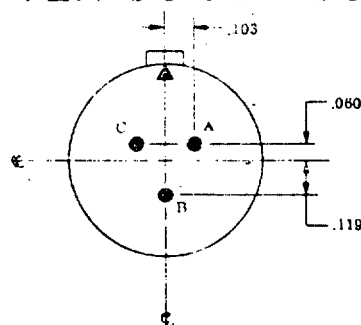
Shell size	Arrangement number	Service rating	Number of contacts	Size contacts	Symbol	Contact location	Supersedes document
16S, 17	-5	A	3	16 16S		All	MS33683-5

Supersedes page 50.3 of 27 June 1975

MIL-STD-1651

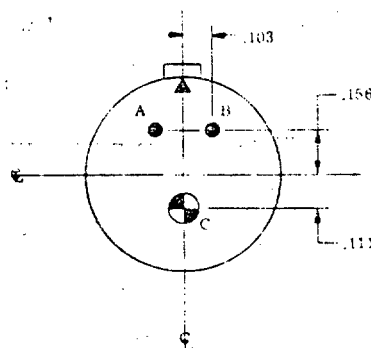
10 June 1976

INACTIVE FOR DESIGN AFTER 30 JUL 1951



ALTERNATE INSERT POSITIONS			
A DEGREES			
W	X	Y	Z
90	180	270	—

Shell size	Arrangement number	Service rating	Number of contacts	Size contacts	Symbol	Contact location	Supersedes document
16S, 17	-6	A	3	16 16S		A11	MS33683-6

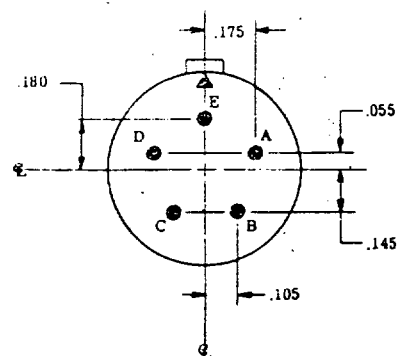


ALTERNATE INSERT POSITIONS			
A DEGREES			
W	X	Y	Z
80	110	250	280

Shell size	Arrangement number	Service rating	Number of contacts	Size contacts	Symbol	Contact location	Supersedes document
16	-7	A	2	16		A11	MS33683-7
			1	S			

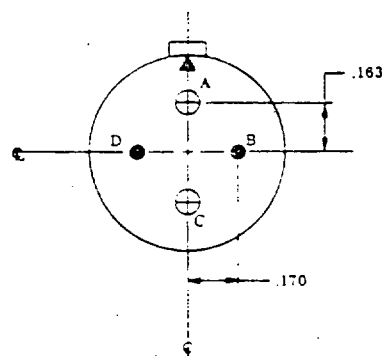
Supersedes page 50.4 of 27 June 1975

MIL-STD-1651
10 June 1976



ALTERNATE INSERT POSITIONS			
A DEGREES			
W	X	Y	Z
—	170	265	—

Shell size	Arrangement number	Service rating	Number of contacts	Size contacts	Symbol	Contact location	Supersedes document
16S, 17	-8	A	5	16 16S		A11	MS33683-8



ALTERNATE INSERT POSITIONS			
A DEGREES			
W	X	Y	Z
35	110	250	325

* # †

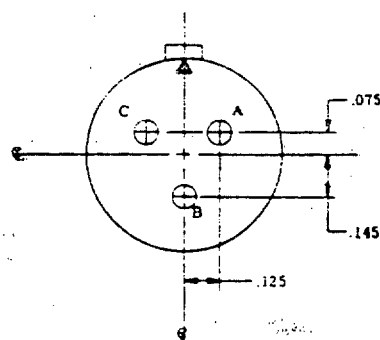
Shell size	Arrangement number	Service rating	Number of contacts	Size contacts	Symbol	Contact location	Supersedes document
16	-9	A	2	16		A11	MS33683-9
			2	12			

Supersedes page 50.5 of 27 June 1975

50.5

MIL-STD-1651

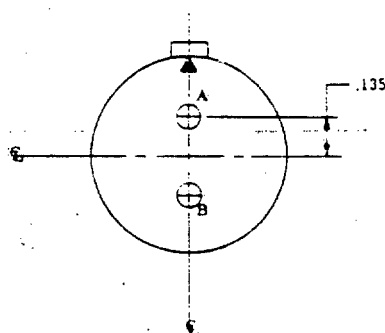
27 June 1975



ALTERNATE INSERT POSITIONS			
A DEGREES			
W	X	Y	Z
90	180	270	—

* # †

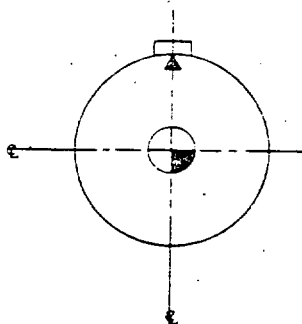
Shell size	Arrangement number	Service rating	Number of contacts	Size contacts	Symbol	Contact location	Supersedes document
16	-10	A	3	12		A11	MS33683-10



ALTERNATE INSERT POSITIONS			
A DEGREES			
W	X	Y	Z
35	110	250	325

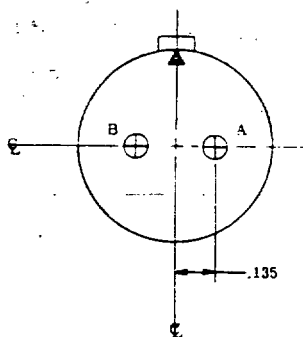
Shell size	Arrangement number	Service rating	Number of contacts	Size contacts	Symbol	Contact location	Supersedes document
16	-11	A	2	12		A11	MS33683-11

MIL-STD-1651
27 June 1975



ALTERNATE INSERT POSITIONS			
A DEGREES			
W	X	Y	Z
—	—	—	—

Shell size	Arrangement number	Service rating	Number of contacts	Size contacts	Symbol	Contact location	Supersedes document
16	-12	A	1	4		---	MS33683-12



CONTACT A - IRON
CONTACT B - CONSTANTAN

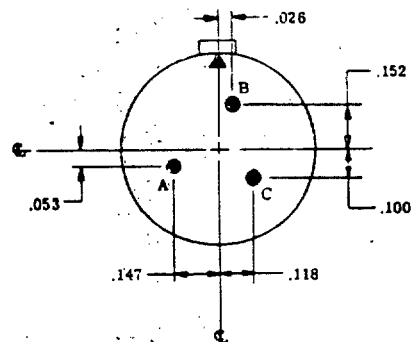
ALTERNATE INSERT POSITIONS			
A DEGREES			
W	X	Y	Z
35	110	250	325

Shell size	Arrangement number	Service rating	Number of contacts	Size contacts	Symbol	Contact location	Supersedes document
16	-13	A	2	12		All	MS33683-13

MIL-STD-1651

10 June 1976

INACTIVE FOR DESIGN AFTER 27 APR 1945

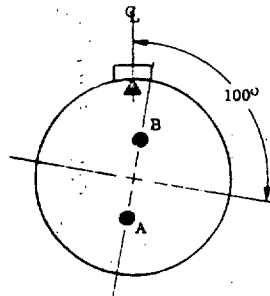


FOR OTHER INSERT POSITION SEE 16S-17

ALTERNATE INSERT POSITIONS			
A DEGREES			
W	X	Y	Z
—	—	—	—

Shell size	Arrangement number	Service rating	Number of contacts	Size contacts	Symbol	Contact location	Supersedes document
16S, 17	-14	D	3	16 16S	●	All	MS33683-14

INACTIVE FOR DESIGN AFTER 27 APR 1945

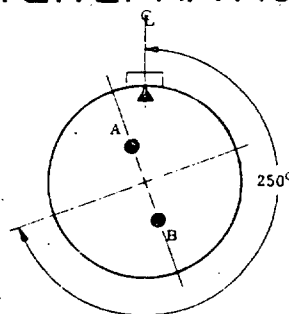
CONTACT ARRANGEMENT AND DIMENSIONS
IDENTICAL TO 16S-4 EXCEPT FOR POSITION
OF INSERT IN SHELL

ALTERNATE INSERT POSITIONS			
A DEGREES			
W	X	Y	Z
—	—	—	—

Shell size	Arrangement number	Service rating	Number of contacts	Size contacts	Symbol	Contact location	Supersedes document
16S, 17	-15	D	2	16 16S	●	All	MS33683-15

Supersedes page 50.8 of 27 June 1975

INACTIVE FOR DESIGN AFTER 27 APR 1945

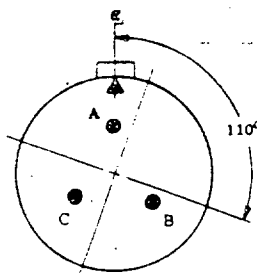


CONTACT ARRANGEMENT AND DIMENSIONS
IDENTICAL TO 16S-4 EXCEPT FOR POSITION
OF INSERT IN SHELL

ALTERNATE INSERT POSITIONS			
A DEGREES			
W	X	Y	Z
—	—	—	—

Shell size	Arrangement number	Service rating	Number of contacts	Size contacts	Symbol	Contact location	Supersedes document
16S, 17	-16	D	2	16 16S		All	MS33683-16

INACTIVE FOR DESIGN AFTER 27 APR 1945

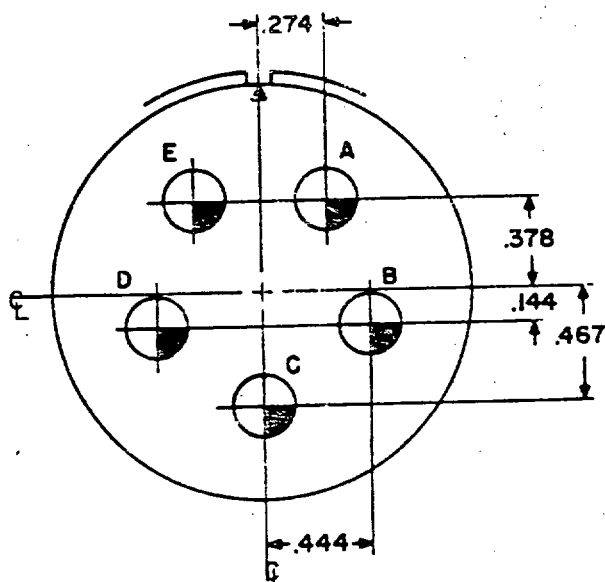


CONTACT ARRANGEMENT AND DIMENSIONS
IDENTICAL TO 16S-14 EXCEPT FOR
POSITION OF INSERT IN SHELL

ALTERNATE INSERT POSITIONS			
A DEGREES			
W	X	Y	Z
—	—	—	—

Shell size	Arrangement number	Service rating	Number of contacts	Size contacts	Symbol	Contact location	Supersedes document
16S, 17	-17	D	3	16 16S		All	MS33683-17

Supersedes page 50.9 of 27 June 1975



ALTERNATE INSERT POSITIONS			
A DEGREES			
W	X	Y	Z
-	-	-	-

(Not applicable to MIL-C-22992 or MIL-C-83723)

Shell size	Arrangement number	Service rating	Number of contacts	Size contacts	Symbol	Contact location	Supersedes document
32	-63	D	5	4		All	---