

MIL-STD-1554

1 JULY 1975

MILITARY STANDARD

INSERT ARRANGEMENTS FOR MIL-C-83723 SERIES III AND MIL-C-26500

ENVIRONMENT RESISTING, CIRCULAR, ELECTRICAL CONNECTORS



FSC 5935

MIL-STD-1554
JULY 1975

DEPARTMENT OF DEFENSE
Washington, D.C. 20301

Insert Arrangements for MIL-C-83723 Series III and MIL-C-26500 Environment Resisting,
Circular, Electrical Connectors

MIL-STD-1554

1. This military standard is approved for use by all Departments and Agencies of the Department of Defense.

2. Recommended corrections, additions, or deletions should be addressed to the Engineering and Technical Support Division, Air Force Logistics Command, MAGE, Wright-Patterson AFB, Ohio 45433.

CONTENTS

<u>Paragraph</u>		<u>Page</u>
1.	SCOPE- - - - -	1
2.	REFERENCED DOCUMENTS - - - - -	1
3.	DEFINITIONS- - - - -	1
4.	GENERAL REQUIREMENTS (Not applicable)- - - - -	1
5.	DETAIL REQUIREMENTS- - - - -	1
5.1	Dimensions - - - - -	1
5.2	Main key or keyway polarization- - - - -	1
5.3	Marking- - - - -	3

SECTIONS

<u>Section</u>		
10	Shell Size 8- - - - -	10.1
20	Shell Size 10 - - - - -	20.1
30	Shell Size 12 - - - - -	30.1
40	Shell Size 14 - - - - -	40.1
50	Shell Size 16 - - - - -	50.1
60	Shell Size 18 - - - - -	60.1
70	Shell Size 20 - - - - -	70.1
80	Shell Size 22 - - - - -	80.1
90	Shell Size 24 - - - - -	90.1

MIL-STD-1554
1 JULY 1975

1. SCOPE

1.1 This standard covers insert arrangements for use with MIL-C-83723 series III and MIL-C-26500 environment resisting, circular, electrical connectors.

2. REFERENCED DOCUMENTS

2.1 The issues of the following documents in effect on the date of invitation for bids form a part of this standard to the extent specified herein.

SPECIFICATIONS

MILITARY

- MIL-C-26500 - Connectors, General Purpose, Electrical, Miniature, Circular, Environment Resisting, General Specification for.
MIL-C-83723 - Series III - Connectors, Electrical, (Circular, Environment Resisting), Receptacles and Plugs, General Specification for.

(Copies of specifications, standards, drawings and publications required by suppliers in connection with specific procurement functions should be obtained from the procuring activity or as directed by the contracting officer.)

2.2 Other publications. The following document forms a part of this standard to the extent specified herein.

ANSI Y14.5-1973 - Dimensioning and Tolerancing.

(Application for copies should be addressed to American Standards Institute, 1430 Broadway, New York, NY 10018.)

3. DEFINITIONS

3.1 The terms used in this standard are generally accepted by the electrical and electronics industries and commonly used in electrical connector engineering practice.

4. GENERAL REQUIREMENTS

Not applicable.

5. DETAIL REQUIREMENTS

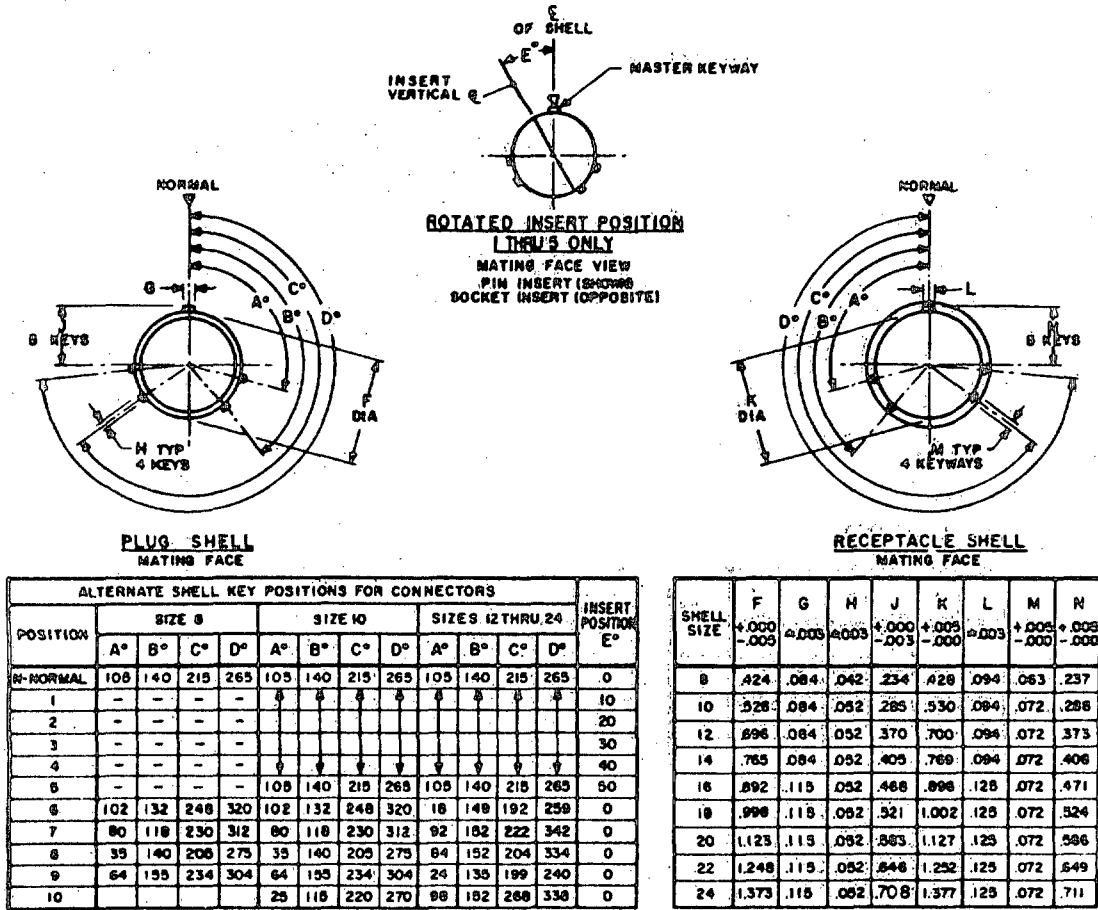
5.1 Dimensions. Dimensions shall be in accordance with the applicable section of this standard and the following dimensional data:

- (a) Dimensioning and tolerancing in accordance with ANSI Y14.5-1973. Dimensions are true position and in inches.
- (b) Metric equivalents (to the nearest .01 mm) are given for general information only and are based upon 1 inch = 25.4 mm.
- (c) Dimensions and markings shown are for engaging face of pin insert; socket insert is opposite.
- (d) The following tolerances apply to insert installed in shell:
 1. Center of each hole in insert shall be located at true position within .014 dia. $\oplus .014 \text{ dia.}$
 2. Center of engaging end of each contact shall be located at true position within .024 dia. $\oplus .024 \text{ dia.}$
- (e) Unless otherwise indicated, dimensions are symmetrical about centerline.

5.2 Main key or keyway polarization (see figure 1).

- (a) Each insert arrangement is shown in the "normal position" in the shell.
- (b) For alternate polarizing positions, the connector insert is rotated in respect to the shell.

MIL-STD-1554
1 JULY 1975



Main key/keyway polarization

INCHES	MM	INCHES	MM	INCHES	MM
.003	.08	.373	9.47	.700	17.78
.004	.10	.405	10.29	.708	17.98
.005	.13	.408	10.36	.711	18.06
.042	1.07	.424	10.77	.765	19.43
.052	1.32	.428	10.87	.769	19.53
.063	1.60	.468	11.89	.892	22.66
.072	1.83	.471	11.96	.896	22.76
.084	2.13	.521	13.23	.998	25.35
.094	2.39	.524	13.31	1.002	25.45
.115	2.92	.526	13.36	1.123	28.52
.125	3.18	.530	13.46	1.127	28.63
.234	5.94	.583	14.81	1.248	31.70
.237	6.02	.586	14.88	1.252	31.80
.285	7.24	.646	16.41	1.373	34.87
.288	7.32	.649	16.48	1.377	34.98
.370	9.40	.696	17.68		

FIGURE 1. Main key or keyway polarization.

MIL-STD-1554

1 JULY 1975

- (c) In the "normal position" (position "N") the indexing radius coincides with the ϕ of the master key or keyway of shell.
- (d) In "alternate insert positions" (positions 1, 2, 3, 4, and 5) the socket insert is rotated clockwise relative to the centerline of the master key or keyway of shell.
- (e) In "alternate insert position" (positions 1, 2, 3, 4, and 5) the pin insert is rotated counter-clockwise relative to the centerline of the master key or keyway of shell.
- (f) In "alternate keying position" (positions 6, 7, 8, 9, and 10) the keys or keyways are positioned as indicated in figure 1 with reference to the master key or keyway.
- (g) Four keys or keyways (MMC) and insert shall be located within .004 either side of (TP) relative to master key or keyway (MMC) and shell OD or ID (MMC).
- (h) Alternate insert positions 1, 2, 3, 4, and 5 are for interchangeability use only. Not recommended for new design.

5.3 Marking. Marking shall be in accordance with MIL-C-83723 series III, MIL-C-26500, and as shown in the applicable section of this military standard.

Custodians:

Army - EL
 Navy - AS
 Air Force - 85

Preparing activity:

Air Force - 85

(Project 5935-1949)

Review activities:

Army - MU, AV, M1
 Navy - EC
 Air Force - 11, 15, 17, 80
 DSA - ES

User activities:

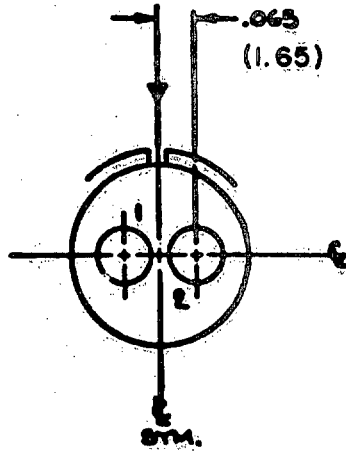
Army -
 Navy -
 Air Force -

MIL-STD-1554
1 JULY 1975

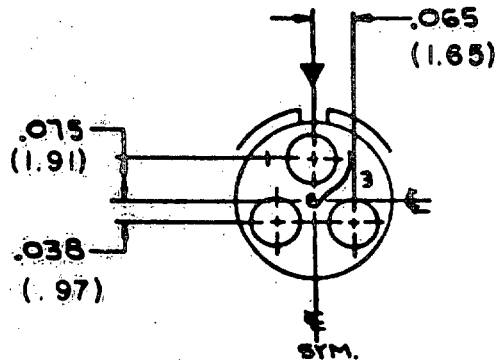
SECTION 10

SHELL SIZE 8

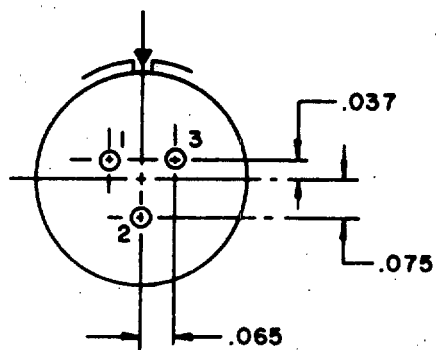
MIL-STD-1554
1 JULY 1975



Shell size	Arrangement No.	Number of contacts	Size contacts	Service rating	Contact location	Superseded document
8	2	2	20	I	All	MS27561-2



Shell size	Arrangement No.	Number of contacts	Size contacts	Service rating	Contact location	Superseded document
8	3	3	20	I	All	MS27561-3

MIL-STD-1554
1 JULY 1975

INCHES	MM
.037	.94
.065	1.65
.075	1.91

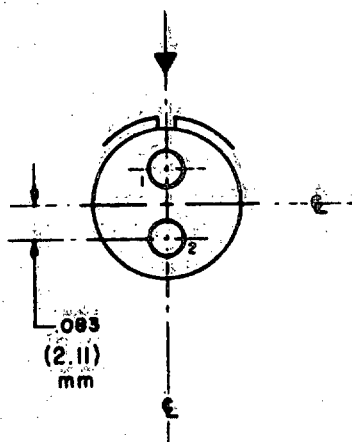
Shell size	Arrangement No.	Number of contacts	Size contacts	Service rating	Contact location	Superseded document
8	98	3	20	I	All	---

MIL-STD-1554
1 JULY 1975

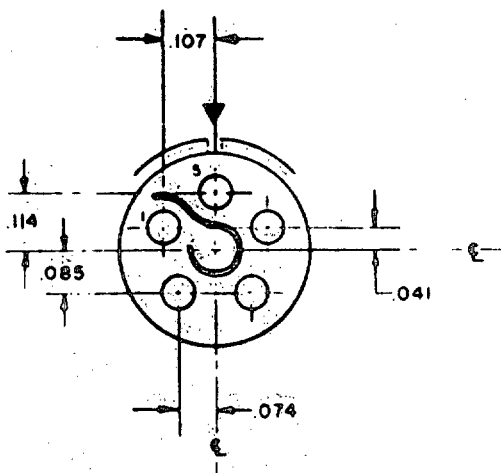
SECTION 20

SHELL SIZE 10

MIL-STD-1554
1 JULY 1975



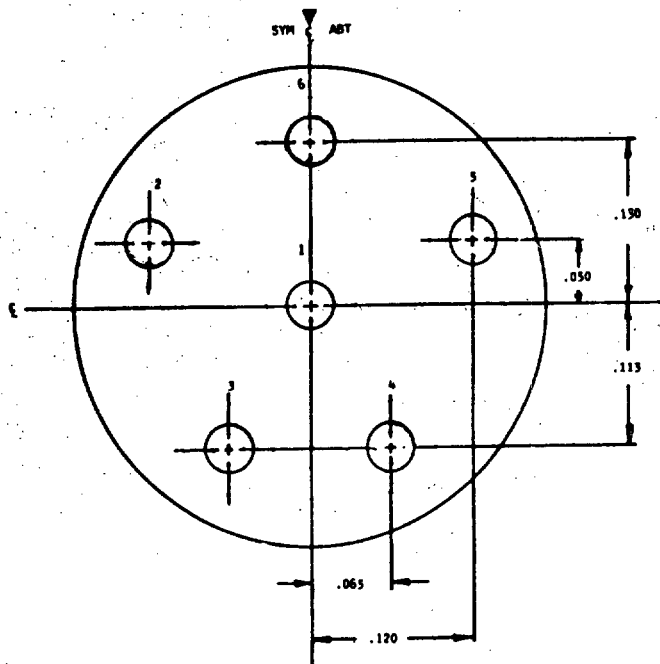
Shell size	Arrangement No.	Number of contacts	Size contacts	Service rating	Contact location	Superseded document
10	2	2	20	I	All	MS24260-2



INCHES	MM
.041	1.04
.074	1.88
.085	2.16
.107	2.72
.114	2.90

Shell size	Arrangement No.	Number of contacts	Size contacts	Service rating	Contact location	Superseded document
10	5	5	20	I	All	MS24260-5

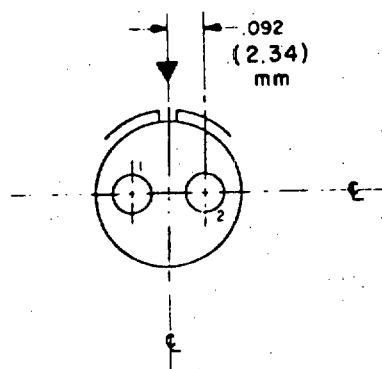
MIL-STD-1554
1 JULY 1975



INCHES	MM
.050	1.27
.065	1.65
.113	2.87
.120	3.05
.130	3.30

Shell size	Arrange-ment No.	Number of contacts	Size contacts	Service rating	Contact location	Superseded document
10	6	6	20	I	All	MS27748-6

Applicable to MIL-C-83723 Series III only.



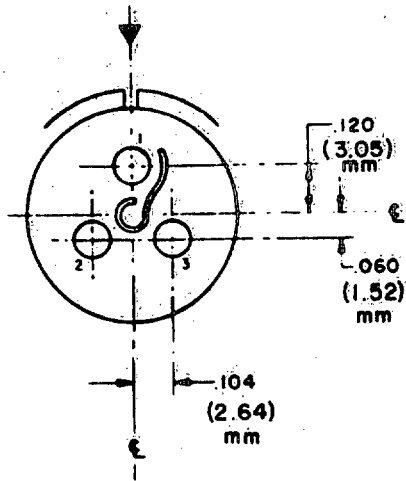
Shell size	Arrange-ment No.	Number of contacts	Size contacts	Service rating	Contact location	Superseded document
10	20	2	16	I	All	MS24260-20

MIL-STD-1554
1 JULY 1975

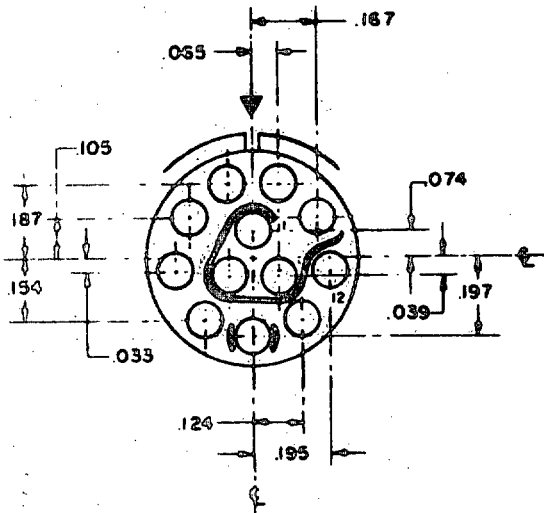
SECTION 30

SHELL SIZE 12

MIL-STD-1554
JULY 1975



Shell size	Arrangement No.	Number of contacts	Size contacts	Service rating	Contact location	Superseded document
12	3	3	16	I	All	MS24260-3



INCHES	MM	INCHES	MM
.033	.84	.154	3.91
.039	.99	.167	4.24
.065	1.65	.187	4.75
.074	1.88	.195	4.95
.105	2.67	.197	5.00
.124	3.15		

Shell size	Arrangement No.	Number of contacts	Size contacts	Service rating	Contact location	Superseded document
12	12	12	20	I	All	MS24260-12

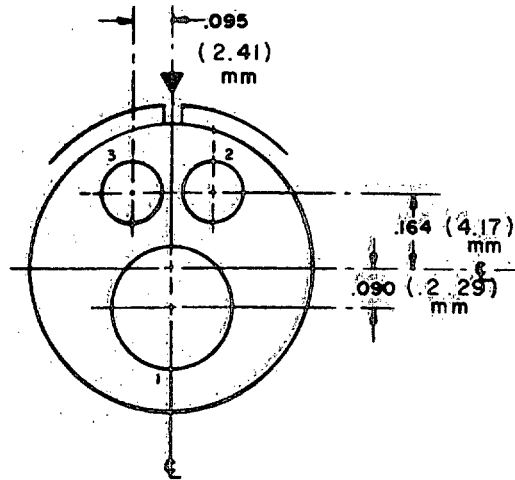
MIL-STD-1554
1 JULY 1975

SECTION 40

SHELL SIZE 14

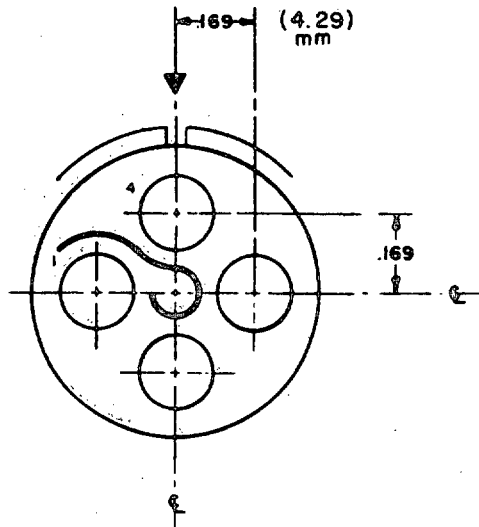
40.1

MIL-STD-1554
1 JULY 1975



Shell size	Arrangement No.	Number of contacts	Size contacts	Service rating	Contact location	Superseded document
14	3	1	Shielded per MS27184-20P MS27185-20S	I	1	MS24260-3
		2	16		2,3	

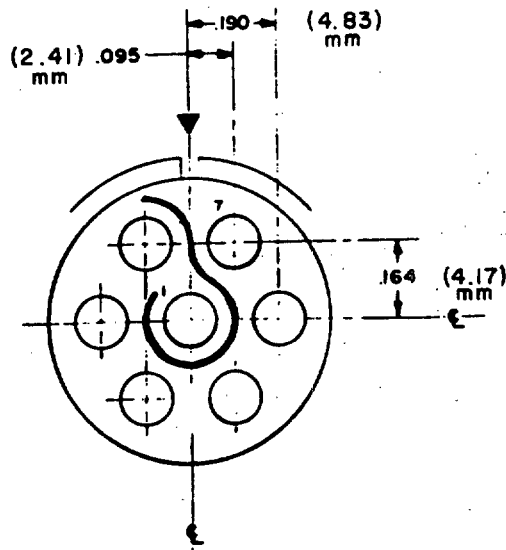
Applicable to MIL-C-26500 only.



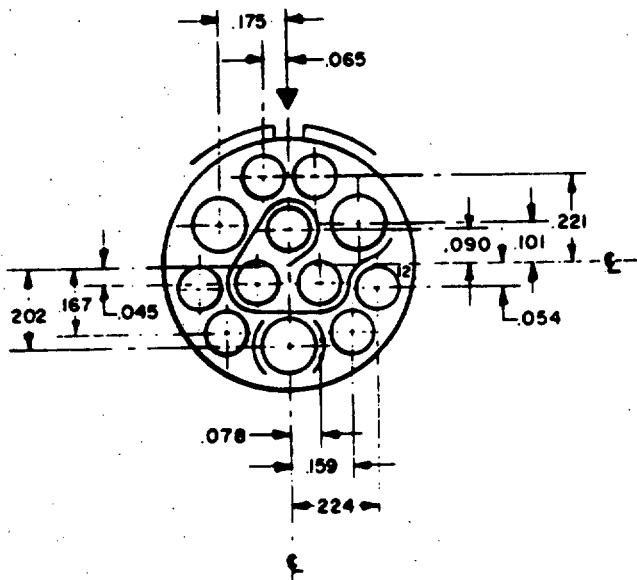
Shell size	Arrangement No.	Number of contacts	Size contacts	Service rating	Contact location	Superseded document
14	4	4	12	I	All	MS24260-4
	5*	4	Shielded per MS27184-22P MS27185-22S	I	All	MS24260-5

*Applicable to MIL-C-26500 only.

MTL-STD-1554
1 JULY 1975



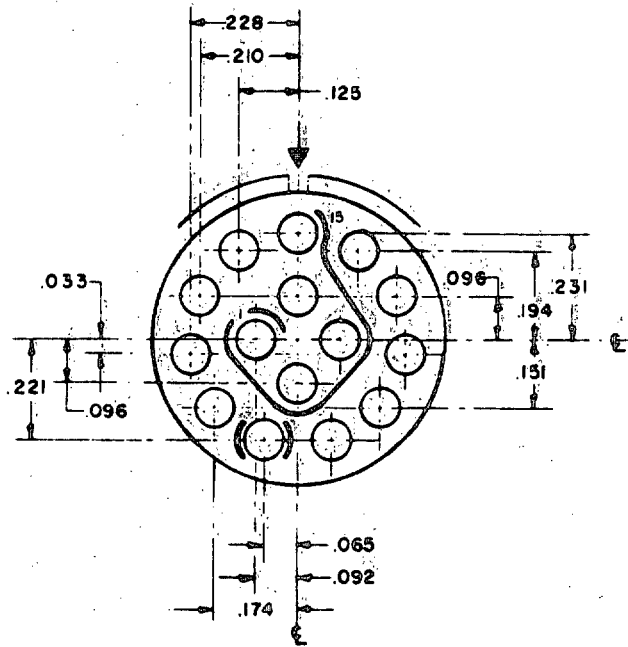
Shell size	Arrangement No.	Number of contacts	Size contacts	Service rating	Contact location	Superseded document
14	7	7	16	I	All	MS24260-7



INCHES	MM	INCHES	MM
.045	1.14	.159	4.04
.054	1.37	.167	4.24
.065	1.65	.175	4.45
.078	1.98	.202	5.13
.090	2.29	.221	5.61
.101	2.57	.224	5.69

Shell size	Arrangement No.	Number of contacts	Size contacts	Service rating	Contact location	Superseded document
14	12	9	20	I	All others	MS24260-12
		3	16		4, 7, 10	

MIL-STD-1554
1 JULY 1975



Shell size	Arrangement No.	Number of contacts	Size contacts	Service rating	Contact location	Superseded document
14	15	15	20	I	All	MS24260-15

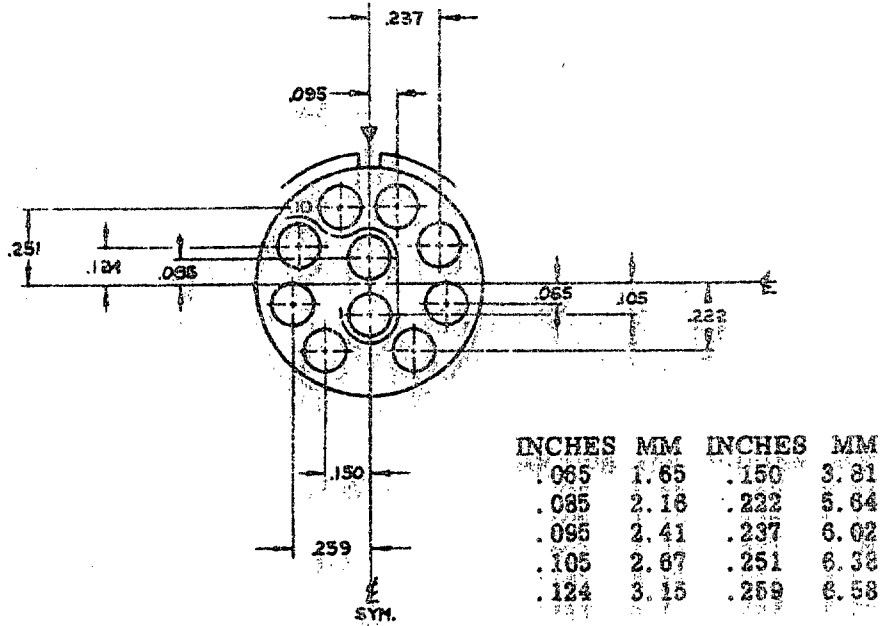
INCHES	MM	INCHES	MM
.033	.83	.174	4.42
.065	1.65	.194	4.93
.092	2.34	.210	5.33
.096	2.44	.221	5.61
.125	3.18	.228	5.79
.151	3.84	.231	5.87

**MIL-STD-1554
1 JULY 1975**

SECTION 50

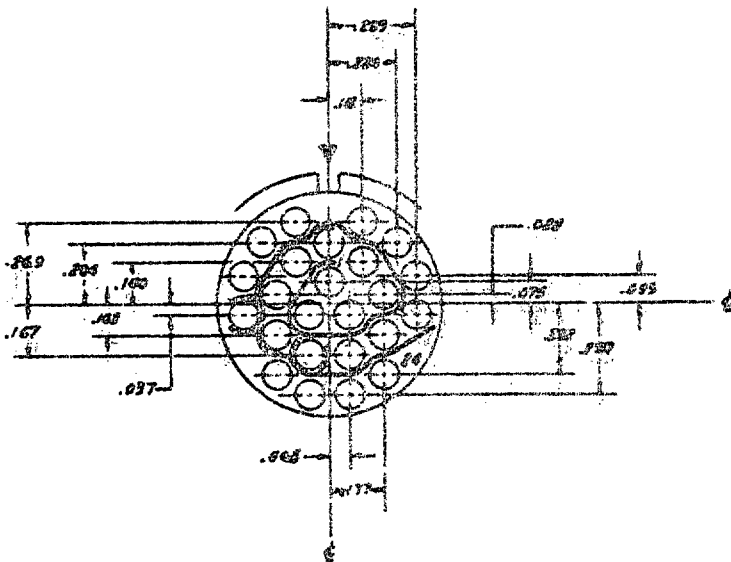
SHELL SIZE 16

MIL-STD-1554
1 JULY 1975



Shell size	Arrangement No.	Number of contacts	Size contacts	Service rating	Contact location	Superseded document
16	10	10	16	I	All	MS24261-10

INCHES	MM	INCHES	MM
.028	.71	.167	4.24
.037	.94	.177	4.50
.065	1.65	.204	5.18
.075	1.91	.224	5.69
.093	2.36	.232	5.89
.102	2.59	.269	6.83
.112	2.84	.289	7.34
.140	3.56	.297	7.54



Shell size	Arrangement No.	Number of contacts	Size contacts	Service rating	Contact location	Superseded document
16	24	24	20	I	All	MS24261-24

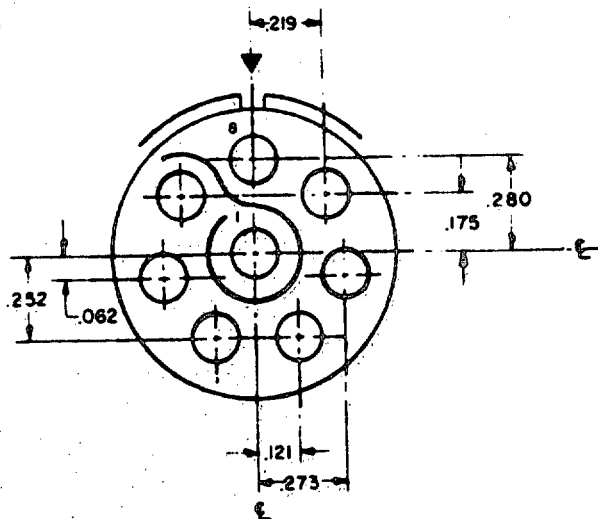
MIL-STD-1554
1 JULY 1975

SECTION 60

SHELL SIZE 18

60.1

MIL-STD-1554
1 JULY 1975

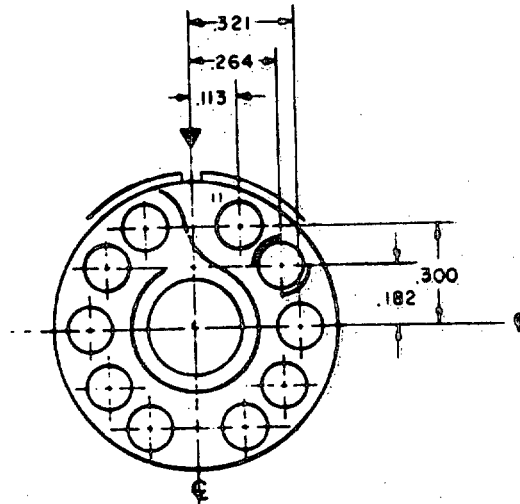


INCHES	MM
.062	1.57
.121	3.07
.175	4.45
.219	5.56
.252	6.40
.273	6.93
.280	7.11

Shell size	Arrangement No.	Number of contacts	Size contacts	Service rating	Contact location	Superseded document
18	8	8	12	I	All	MS24262-8
	9*	6	Shielded per MS27184-22P MS27185-22S	I	2, 3, 4, 5 7 and 8	MS24262-9
		2	12	I	1 and 6	

*Applicable to MIL-C-26500 only.

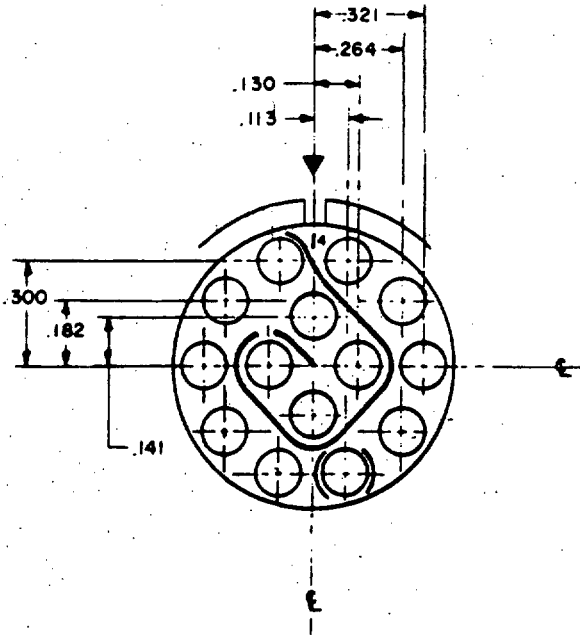
INCHES	MM
.113	2.87
.182	4.62
.264	6.71
.300	7.62
.321	8.15



Shell size	Arrangement No.	Number of contacts	Size contacts	Service rating	Contact location	Superseded document
18	11	1	Shielded per MS27184-20P MS27185-20S	I	1	MS24262-11
		10	16		All others	

Applicable to MIL-C-26500 only.

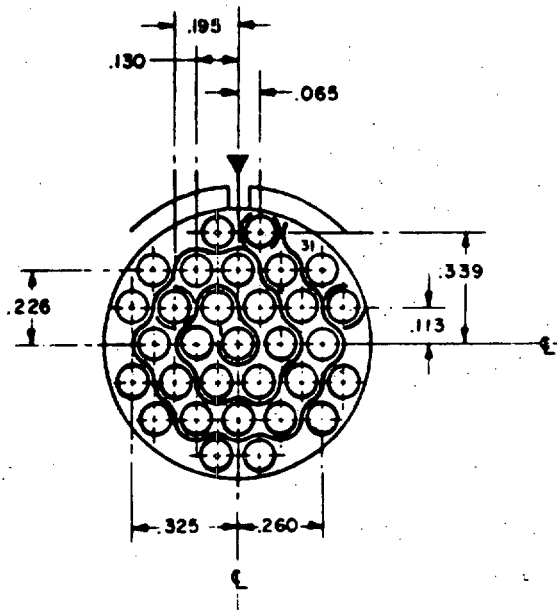
MIL-STD-1554
1 JULY 1975



INCHES	MM
.113	2.87
.130	3.30
.141	3.58
.182	4.62
.264	6.71
.300	7.62
.321	8.15

Shell size	Arrangement No.	Number of contacts	Size contacts	Service rating	Contact location	Superseded document
18	14	14	16	I	All	MS24262-14

INCHES	MM
.065	1.65
.113	2.87
.130	3.30
.195	4.95
.226	5.74
.260	6.60
.325	8.26
.339	8.61



Shell size	Arrangement No.	Number of contacts	Size contacts	Service rating	Contact location	Superseded document
18	31	31	20	I	All	MS24262-31

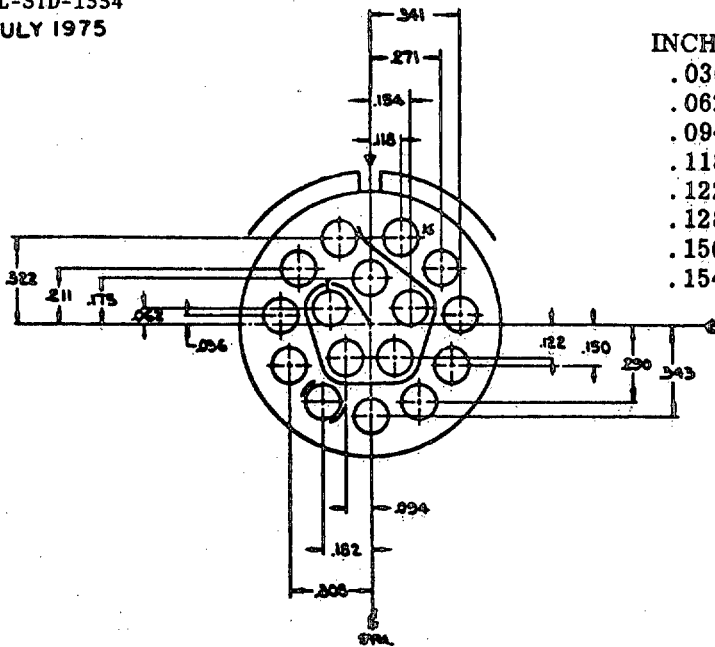
MIL-STD-1554
1 JULY 1975

SECTION 70

SHELL SIZE 20

70.1

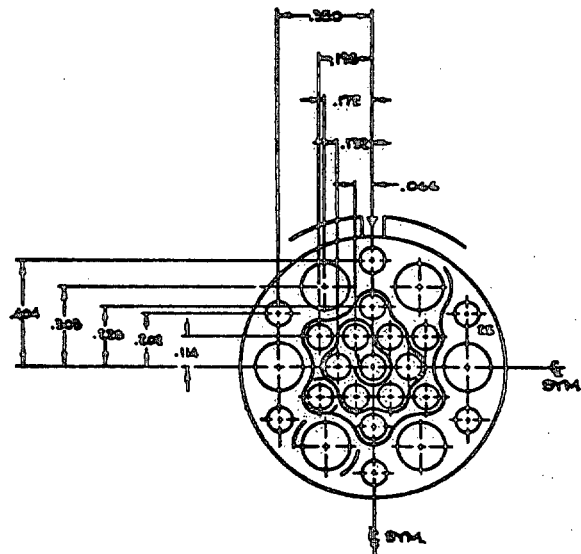
MIL-STD-1554
1 JULY 1975



INCHES	MM	INCHES	MM
.036	.91	.175	4.45
.062	1.57	.211	5.36
.094	2.39	.271	6.88
.118	3.00	.290	7.37
.122	3.10	.308	7.82
.128	3.25	.322	8.18
.150	3.81	.341	8.66
.154	3.91	.343	8.71

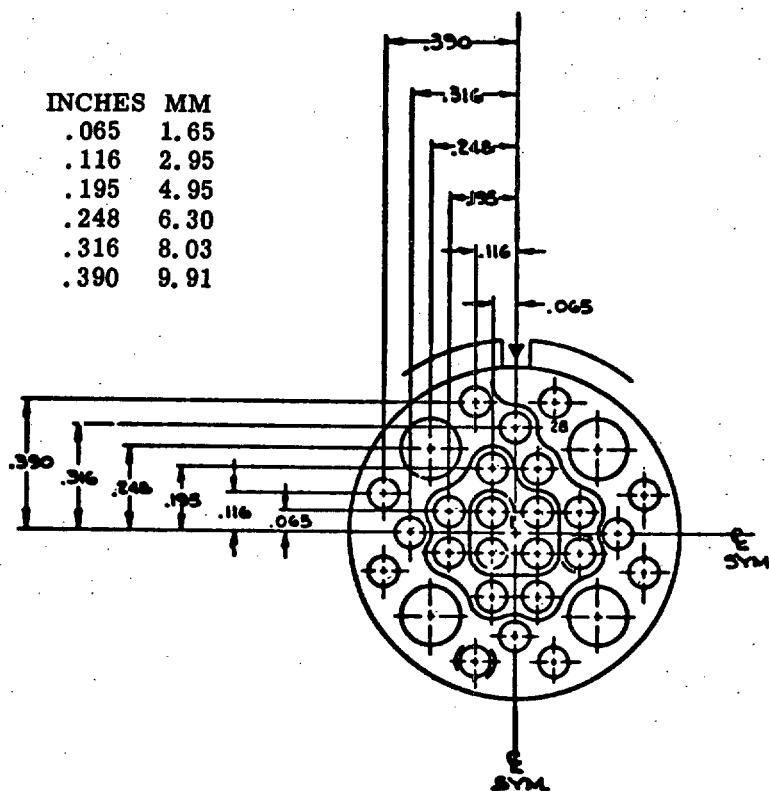
Shell size	Arrangement No.	Number of contacts	Size contacts	Service rating	Contact location	Superseded document
20	16	16	16	I	All	MS27561-16

INCHES	MM	INCHES	MM
.086	1.88	.202	5.13
.114	2.90	.228	5.79
.132	3.35	.303	7.70
.175	4.45	.350	8.89
.198	5.03	.404	10.26



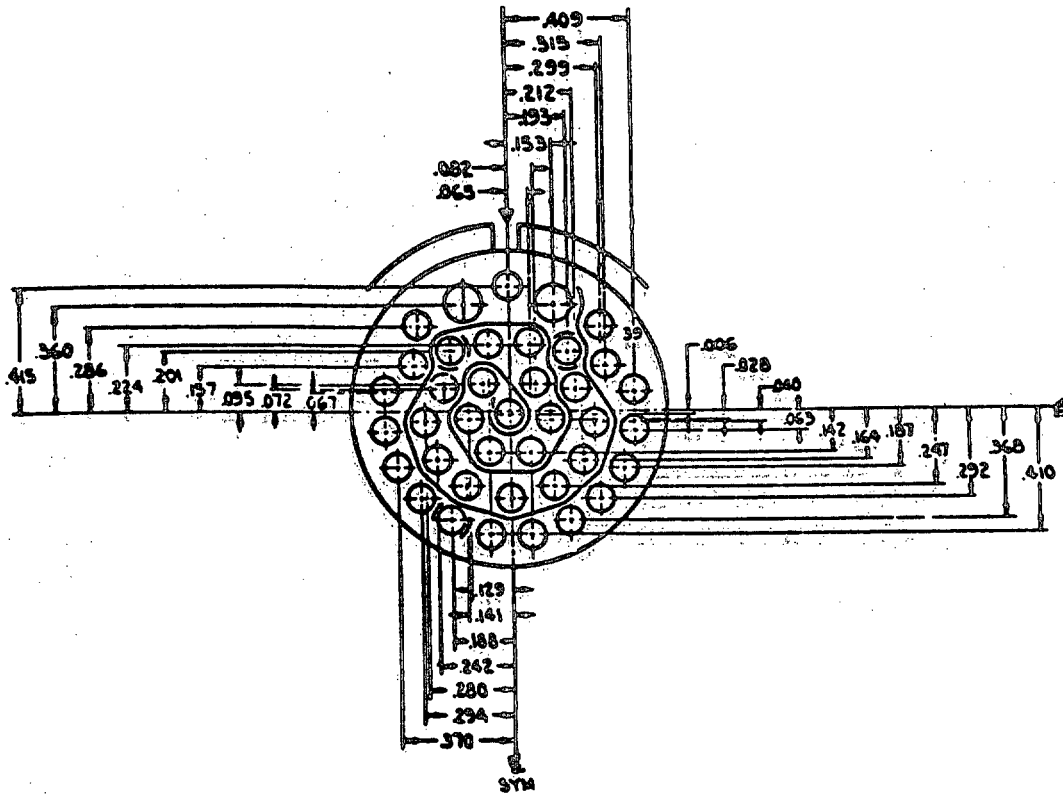
Shell size	Arrangement No.	Number of contacts	Size contacts	Service rating	Contact location	Superseded document
20	25	19	20	I	All	MS27561-25
		6	12			

MIL-STD-1554
1 JULY 1975



Shell size	Arrangement No.	Number of contacts	Size contacts	Service rating	Contact location	Superseded document
20	28	24	20	I	All	MS27561-28
		4	12			

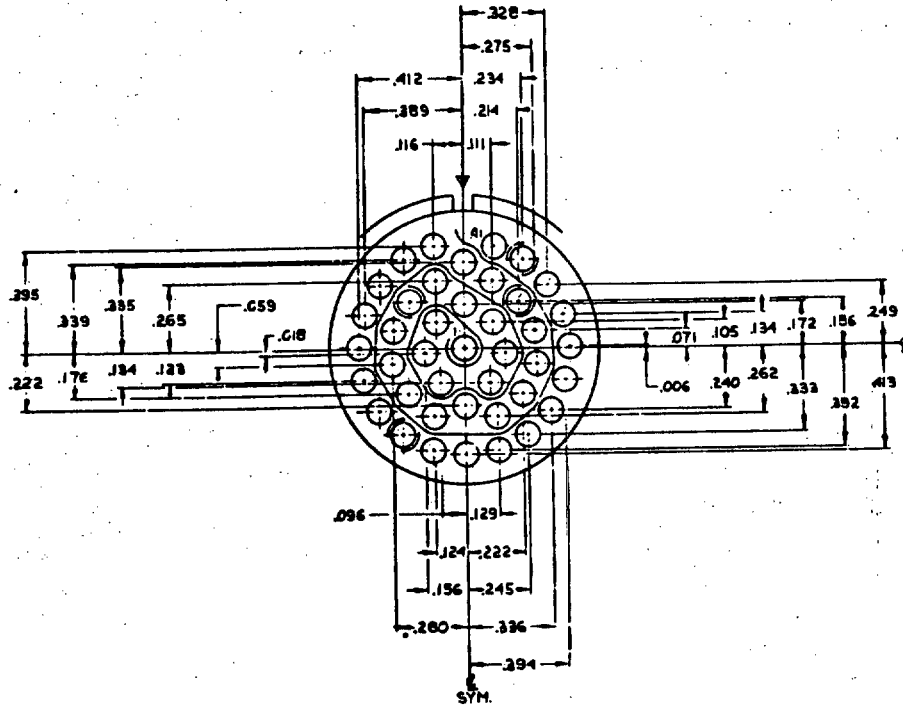
MIL-STD-1554
1 JULY 1975



Shell size	Arrangement No.	Number of contacts	Size contacts	Service rating	Contact location	Superseded document
20	39	37	20	I	A11	MS27561-39
		2	16			

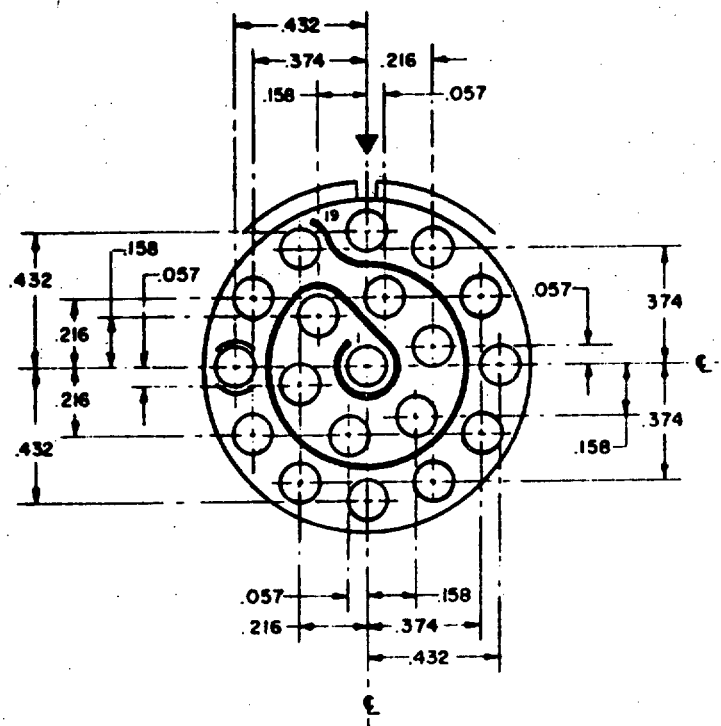
INCHES	MM	INCHES	MM	INCHES	MM
.006	.15	.153	3.89	.286	7.26
.028	.71	.157	3.99	.292	7.42
.040	1.02	.164	4.17	.294	7.47
.063	1.60	.187	4.75	.299	7.59
.065	1.65	.188	4.78	.315	8.00
.067	1.70	.193	4.90	.360	9.14
.072	1.83	.201	5.11	.368	9.35
.082	2.08	.212	5.38	.370	9.40
.095	2.41	.224	5.69	.409	10.39
.129	3.28	.242	6.15	.410	10.41
.141	3.58	.247	6.27	.415	10.54
.142	3.61	.280	7.11		

MIL-STD-1554
1 JULY 1975



Shell size	Arrangement No.	Number of contacts	Size contacts	Service rating	Contact location	Superseded document
20	41	41	20	I	A11	MS27561-41

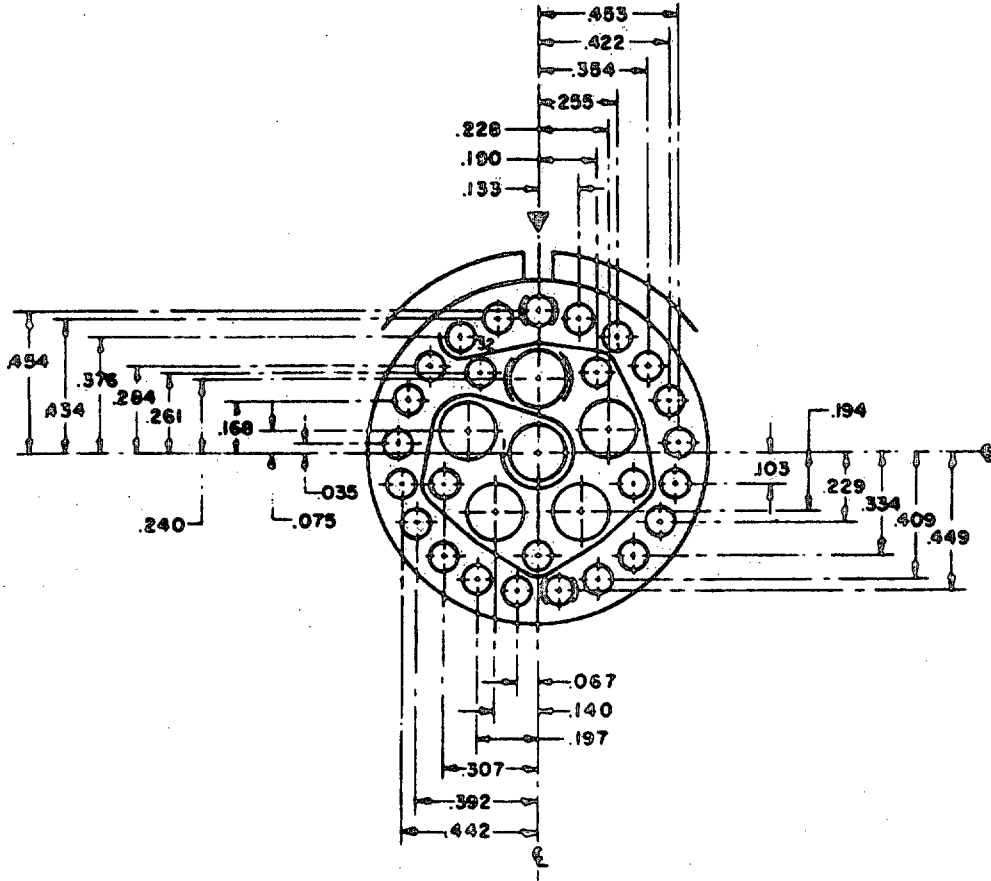
INCHES	MM	INCHES	MM	INCHES	MM	INCHES	MM
.006	.15	.124	3.15	.234	5.94	.333	8.46
.018	.46	.129	3.28	.240	6.10	.335	8.51
.059	1.50	.134	3.40	.245	6.22	.336	8.53
.071	1.80	.156	3.96	.249	6.32	.339	8.61
.096	2.44	.172	4.37	.262	6.65	.389	9.88
.105	2.67	.176	4.47	.265	6.73	.392	9.96
.111	2.82	.186	4.72	.275	6.99	.394	10.01
.116	2.95	.214	5.44	.280	7.11	.395	10.03
.123	3.12	.222	5.64	.328	8.33	.412	10.46
						.413	10.49

MIL-STD-1554
1 JULY 1975

Shell size	Arrangement No.	Number of contacts	Size contacts	Service rating	Contact location	Superseded document
22	19	19	16	I	All	MS24263-19

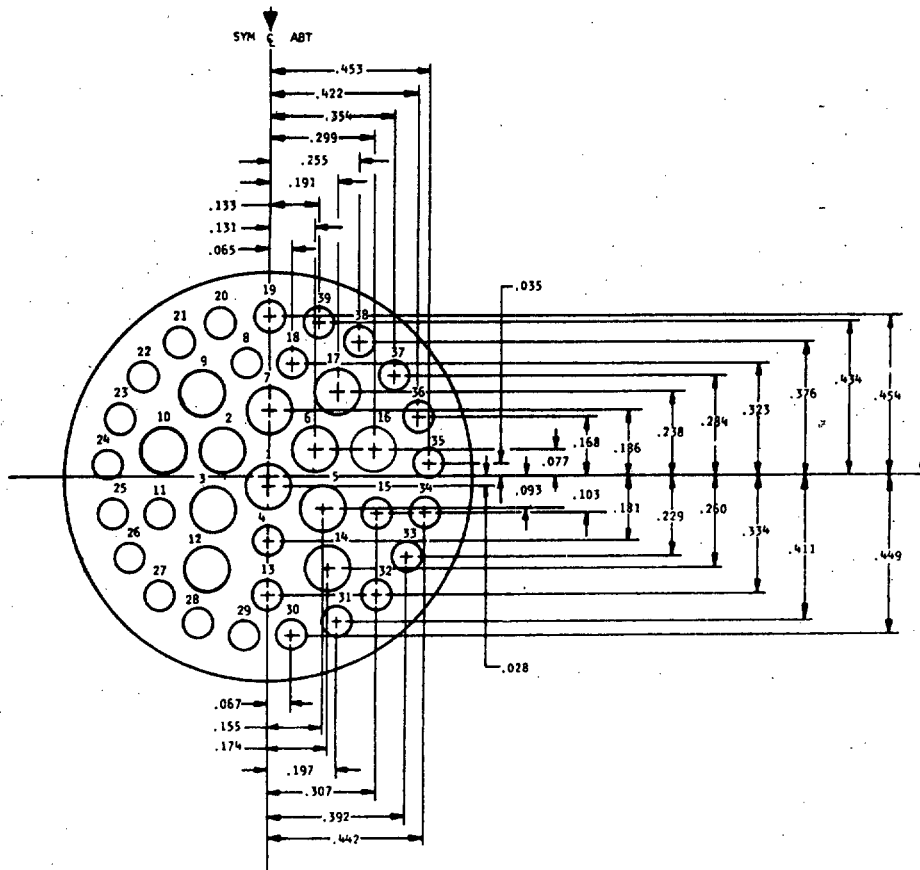
INCHES	MM
.057	1.45
.158	4.01
.216	5.49
.374	9.50
.432	10.97

MIL-STD-1554
1 JULY 1975



Shell size	Arrangement No.	Number of contacts	Size contacts	Service rating	Contact location	Superseded document
22	32	26	20	I	A11	MS24263-32
		6	12			

INCHES	MM	INCHES	MM	INCHES	MM
.035	.89	.228	5.79	.376	9.55
.067	1.70	.229	5.82	.392	9.96
.075	1.91	.240	6.10	.409	10.39
.103	2.62	.255	6.48	.422	10.72
.133	3.38	.261	6.63	.434	11.02
.140	3.56	.284	7.21	.442	11.23
.168	4.27	.307	7.80	.449	11.40
.190	4.83	.334	8.48	.453	11.51
.184	4.83	.354	8.99	.454	11.53
.187	5.00				

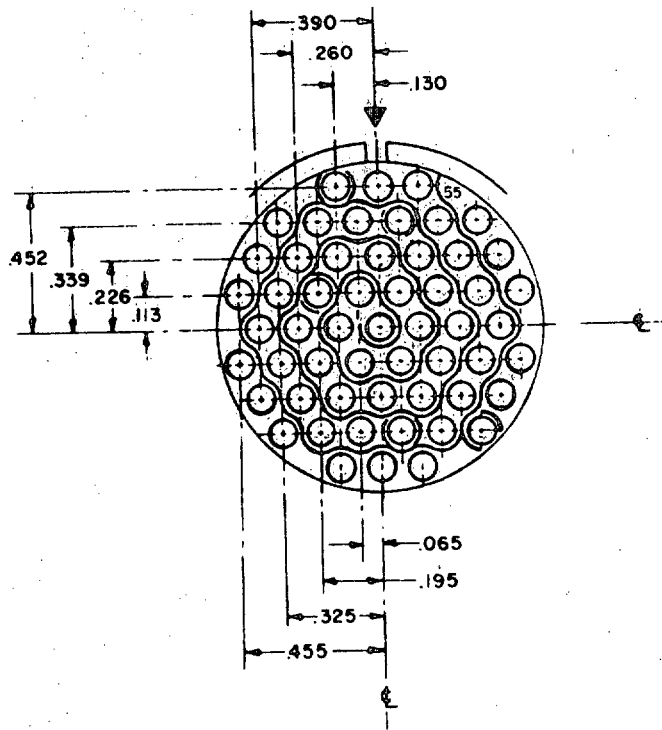


Shell size	Arrange-ment No.	Number of contacts	Size contacts	Service rating	Contact location	Superseded document
22	39	27	20	I	All	MS27748-39
		12	16			

Applicable to MIL-C-83723 series III only.

INCHES	MM	INCHES	MM	INCHES	MM
.028	.71	.181	4.60	.354	8.99
.035	.89	.191	4.85	.376	9.55
.065	1.65	.197	5.00	.392	9.96
.067	1.70	.229	5.82	.411	10.44
.077	1.96	.238	6.05	.422	10.72
.093	2.36	.255	6.48	.434	11.02
.103	2.62	.260	6.60	.442	11.23
.131	3.33	.284	7.21	.449	11.40
.133	3.38	.299	7.59	.453	11.51
.155	3.94	.307	7.80	.454	11.53
.168	4.27	.323	8.20		
.174	4.42	.334	8.48		

MIL-STD-1554
1 JULY 1975



Shell size	Arrangement No.	Number of contacts	Size contacts	Service rating	Contact location	Superseded document
22	55	55	20	I	All	MS24263-55

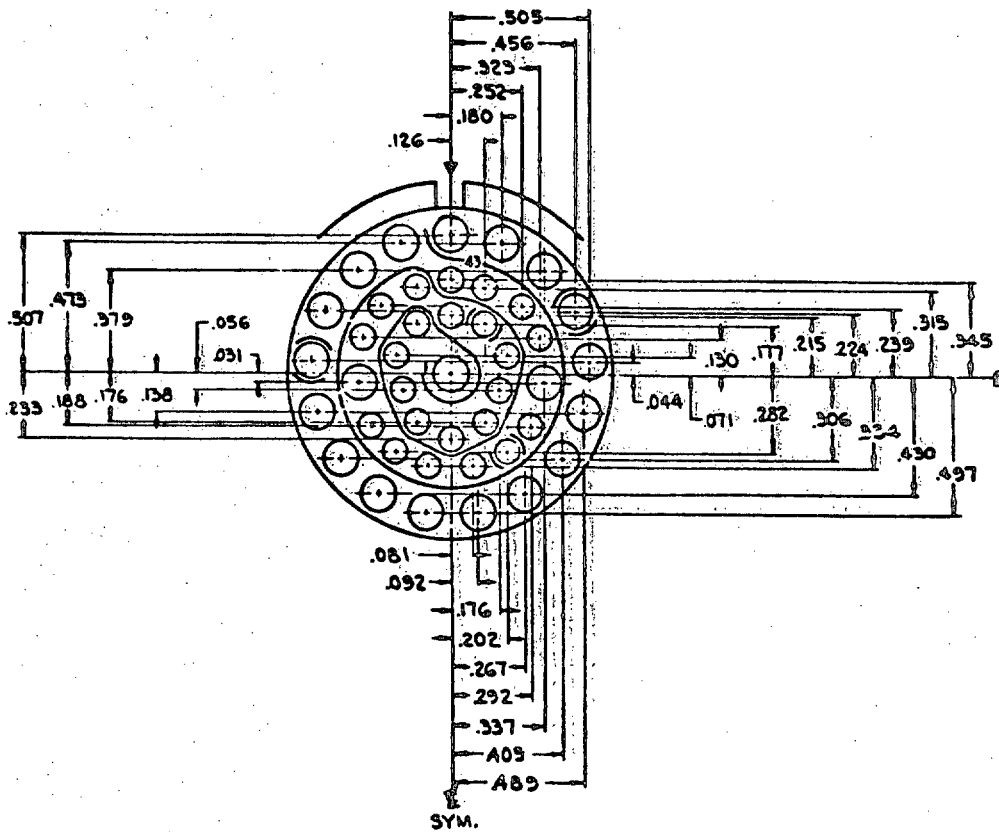
INCHES	MM	INCHES	MM
.065	1.65	.325	8.26
.113	2.87	.339	8.61
.130	3.30	.390	9.91
.195	4.95	.452	11.48
.226	5.74	.455	11.56
.260	6.60		

MIL-STD-1554
1 JULY 1975

SECTION 90

SHELL SIZE 24

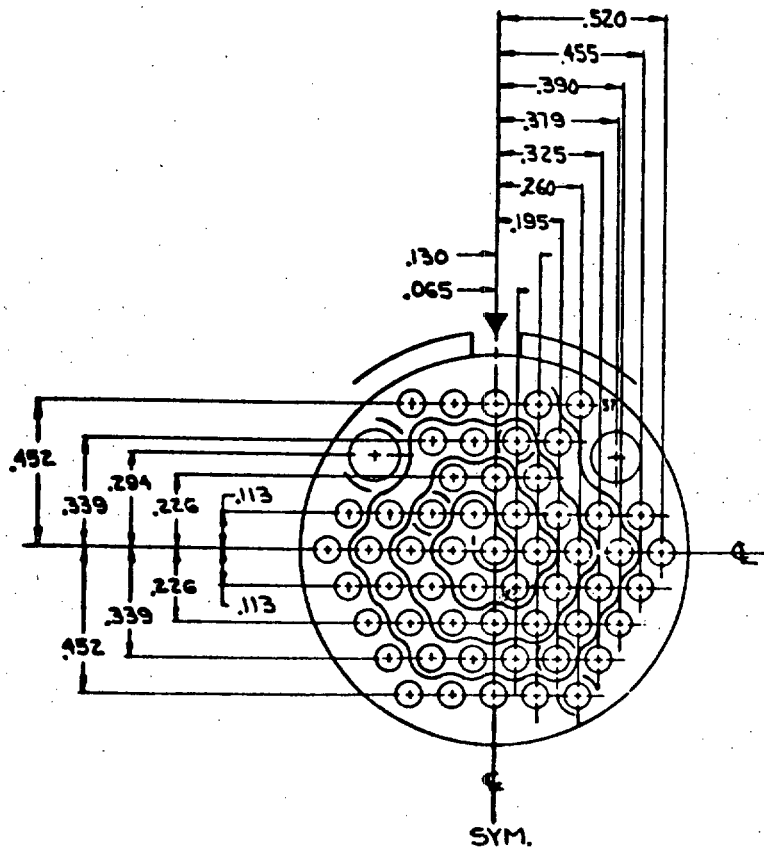
MIL-STD-1554
1 JULY 1975



Shell size	Arrangement No.	Number of contacts	Size contacts	Service rating	Contact location	Superseded document
24	43	23	20	I	All	MS27561-43
		20	16			

INCHES	MM	INCHES	MM	INCHES	MM
.031	.79	.202	5.13	.334	8.48
.044	1.12	.215	5.46	.337	8.56
.056	1.42	.224	5.69	.345	8.76
.071	1.80	.233	5.92	.379	10.08
.081	2.06	.239	6.07	.405	10.29
.092	2.34	.252	6.40	.430	10.92
.126	3.20	.267	6.78	.456	11.58
.130	3.30	.282	7.16	.473	12.01
.176	4.47	.292	7.42	.489	12.42
.177	4.50	.306	7.77	.497	12.62
.180	4.57	.315	8.00	.505	12.83
.188	4.78	.323	8.20	.507	12.88

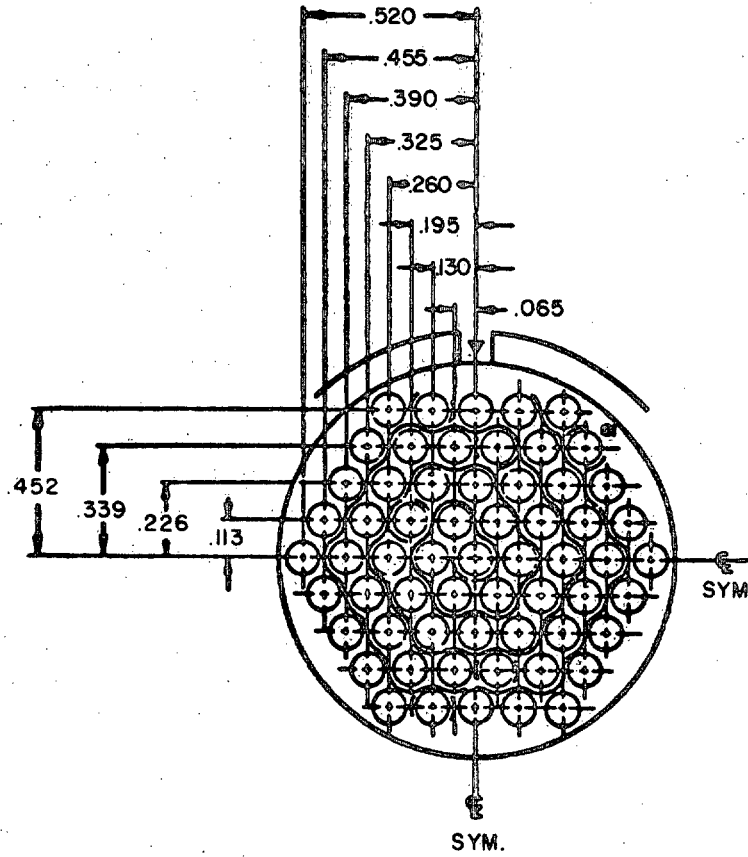
MIL-STD-1554
1 JULY 1975



Shell size	Arrangement No.	Number of contacts	Size contacts	Service rating	Contact location	Superseded document
24	57	55	20	I	All	MS27561-57
		2	12			

INCHES	MM	INCHES	MM
.065	1.65	.325	8.26
.113	2.87	.339	8.61
.130	3.30	.379	9.63
.195	4.95	.390	9.91
.226	5.74	.452	11.48
.260	6.60	.455	11.58
.294	7.47	.520	13.21

MIL-STD-1554
1 JULY 1975



Shell size	Arrangement No.	Number of contacts	Size contacts	Service rating	Contact location	Supersedes document
24	61	61	20	I	All	MS27561-61

INCHES	MM	INCHES	MM
.065	1.65	.325	8.26
.113	2.87	.339	8.61
.130	3.30	.390	9.91
.195	4.95	.452	11.48
.226	5.74	.455	11.56
.260	6.60	.520	13.21

STANDARDIZATION DOCUMENT IMPROVEMENT PROPOSAL

(See Instructions - Reverse Side)

1. DOCUMENT NUMBER	2. DOCUMENT TITLE
3a. NAME OF SUBMITTING ORGANIZATION	4. TYPE OF ORGANIZATION (Mark one) <input type="checkbox"/> VENDOR <input type="checkbox"/> USER <input type="checkbox"/> MANUFACTURER <input type="checkbox"/> OTHER (Specify): _____
b. ADDRESS (Street, City, State, ZIP Code)	
5. PROBLEM AREAS a. Paragraph Number and Wording: b. Recommended Wording: c. Reason/Rationale for Recommendation:	
6. REMARKS	
7a. NAME OF SUBMITTER (Last, First, MI) - Optional	b. WORK TELEPHONE NUMBER (Include Area Code) - Optional
c. MAILING ADDRESS (Street, City, State, ZIP Code) - Optional	8. DATE OF SUBMISSION (YYMMDD)

(TO DETACH THIS FORM, CUT ALONG THIS LINE.)