

MIL-STD-1560A  
NOTICE 2  
24 August 1982

# MILITARY STANDARD

## INSERT ARRANGEMENTS FOR MIL-C-38999 AND MIL-C-27599 ELECTRICAL, CIRCULAR CONNECTORS

TO ALL HOLDERS OF MIL-STD-1560A:

1. THE FOLLOWING PAGES OF MIL-STD-1560A HAVE BEEN REVISED AND SUPERSEDE THE PAGES LISTED:

<u>NEW PAGE</u>	<u>DATE</u>	<u>SUPERSEDED PAGE</u>	<u>DATE</u>
102. 1	1 December 1975	(REPRINTED WITHOUT CHANGE)	
102. 2	24 August 1982	102. 2	1 December 1975

2. THE FOLLOWING PAGES ARE TO BE ADDED:

<u>NEW PAGE</u>	<u>DATE</u>
109. 11	24 August 1982
109. 12	24 August 1982

3. RETAIN THIS NOTICE AND INSERT BEFORE TABLE OF CONTENTS.

4. Holders of MIL-STD-1560A will verify that page changes and additions indicated above have been entered. This notice page will be retained as a check sheet. This issuance, together with appended pages, is a separate publication. Each notice is to be retained by stocking points until the Military Standard is completely revised or canceled.

### Custodians:

Army - CR  
Navy - AS  
Air Force - 85

Preparing activity:  
Air Force - 85

(Project 5935-3272-8)

### Review activities:

Army - AR, MI  
Navy - EC, MS, OS  
Air Force - 11, 15, 17, 99  
DLA - ES

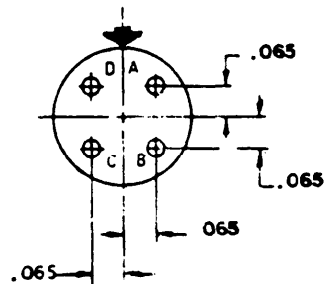


1 DEC 1975

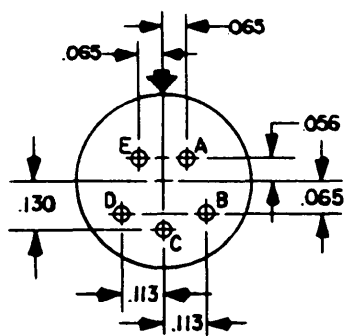
## SECTION 102

## INSERT ARRANGEMENT, ELECTRICAL CONNECTOR

## SHELL SIZE 11



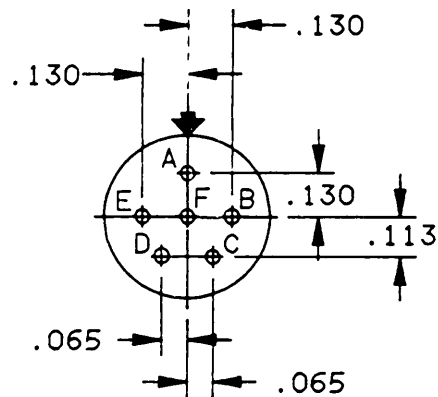
Shell size	Arrangement No.	Number of contacts	Size contacts	Service rating	Contact location	Supersedes document
11	-4	4	20	I	A11	MS20050-4



INCHES	MM
.056	1.42
.065	1.65
.113	2.86
.130	3.30

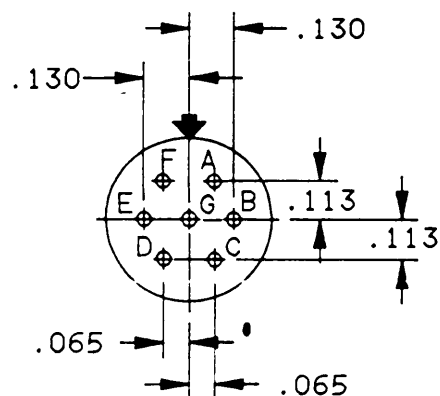
Shell size	Arrangement No.	Number of contacts	Size contacts	Service rating	Contact location	Supersedes document
11	-5	5	20	I	A11	MS20050-5

MIL-STD-1560A  
24 August 1982



INCHES	MM
.065	1.65
.113	2.87
.130	3.30

Shell size	Arrangement No.	Number of contacts	Size contacts	Service rating	Contact location	Supersedes document
11	-98	6	20	I	A11	MS20050-98

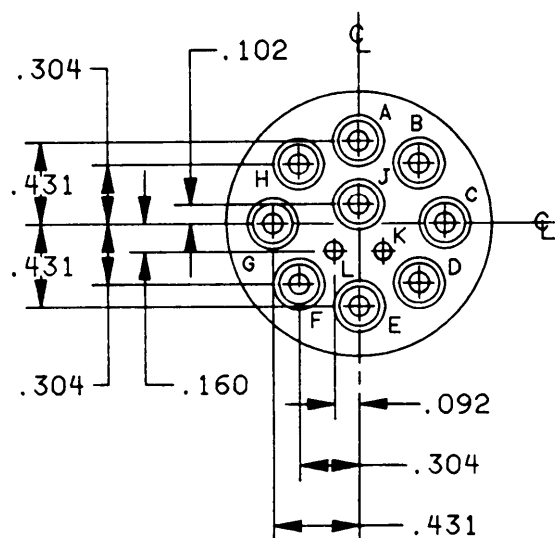


INCHES	MM
.065	1.65
.113	2.87
.130	3.30

Shell size	Arrangement No.	Number of contacts	Size contacts	Service rating	Contact location	Supersedes document
11	-99	7	20	I	A11	MS20050-99

INSERT ARRANGEMENT, ELECTRICAL CONNECTOR

SHELL SIZE 25



CONTACT LEGEND		
Contact IDENT	Size	Qty
	10	9
	20	2

NOTES:

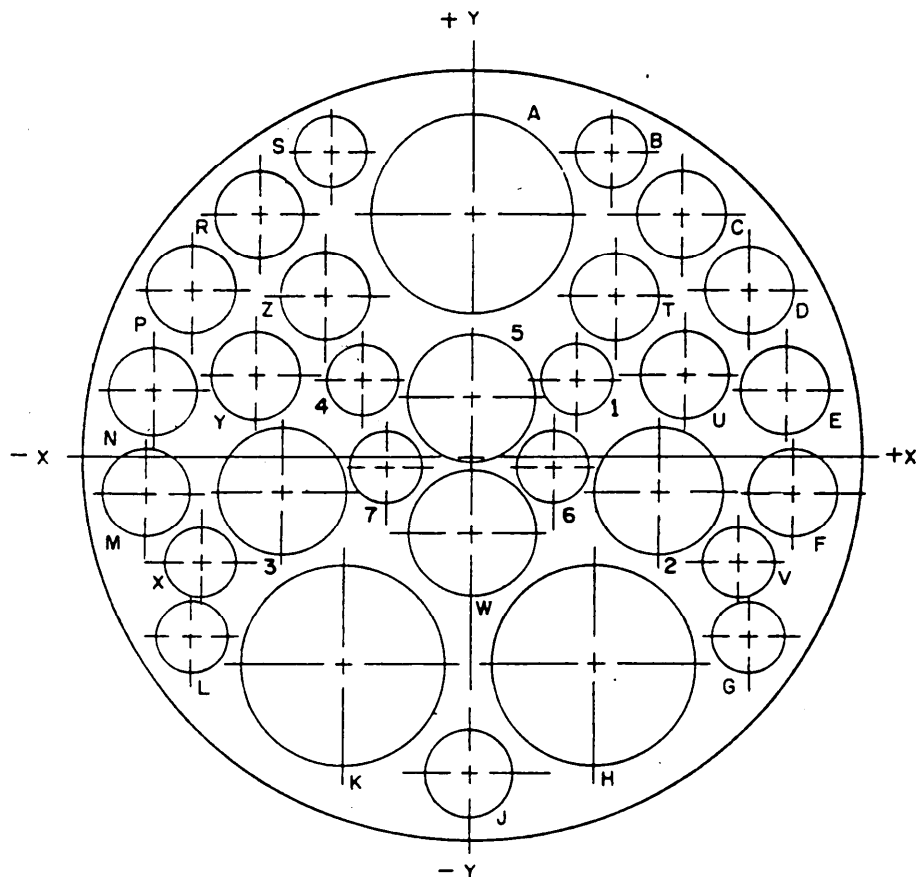
1. All dimensions are true positions.
2. Front face of pin insert shown.

Shell size	Arrangement No.	Number of contacts	Size contacts	Service rating	Contact location
25	-11	9	10	Inst.	A,B,C,D,E, F,G,H,J
		2	20		L,K

INCHES	MM
.092	2.34
.102	2.59
.160	4.06
.303	7.72
.431	10.95

MIL-STD-1560A  
24 August 1982

INSERT ARRANGEMENT, ELECTRICAL CONNECTOR  
SHELL SIZE 25



INCHES	MM	INCHES	MM
.018	.46	.275	6.99
.060	1.52	.312	7.92
.061	1.55	.317	8.05
.099	2.51	.352	8.94
.111	2.82	.353	8.97
.115	2.92	.357	9.07
.131	3.33	.407	10.34
.136	3.45	.411	10.44
.141	3.58	.450	11.43
.183	4.65	.466	11.84
.195	4.95	.467	11.86
.208	5.28	.511	12.98
.234	5.94	.530	13.46
.243	6.17	.537	13.64
.270	6.86	.541	13.74

CONT LOC	X	Y
A	.000	+.407
B	+.234	+.511
C	+.352	+.411
D	+.466	+.275
E	+.530	+.111
F	+.537	-.060
G	+.467	-.312
H	+.208	-.353
J	.000	-.541
K	-.208	-.353
L	-.467	-.312
M	-.537	-.060
N	-.530	+.111
P	-.466	+.275
R	-.352	+.411
S	-.234	+.511
T	+.243	+.270
U	+.357	+.136
V	+.450	-.183
W	.000	-.131
X	-.450	-.183
Y	-.357	+.136
Z	-.234	+.270
1	+.195	+.115
2	+.317	-.061
3	-.317	-.061
4	-.195	+.115
5	.000	+.099
6	+.141	-.018
7	-.141	-.018

SHELL SIZE	ARRANGE- MENT NO.	NUMBER OF CONTACTS	SIZE CONTACTS	SERVICE RATING	CONTACT LOCATION
25	-20	3	8	TRIAx	A,H,K
		4	12	COAX	W,2,3,5
		13	16	INST.	C,D,E,F,J,M, N,P,R,T,U,Y,Z
		10	20		B,G,L,S,V, X,1,4,6,7