

MIL-STD-1491
 NOTICE 1
17 September 1973

MILITARY STANDARD
 GLOSSARY OF
 KNITTING IMPERFECTIONS

TO ALL HOLDERS OF MIL-STD-1491

1. The following pages of MIL-STD-1491 have been revised and supersede the pages listed:

<u>New Page</u>	<u>Date</u>	<u>Superseded Page</u>	<u>Date</u>
ii	17 September 1973	ii	3 December 1971
3	" " "	3	3 December 1971
7	" " "	7	3 December 1971

2. The attached Photographic Supplement and Table of Contents are added.

3. Retain this notice.

4. Holders of MIL-STD-1491 will verify that pages changed above have been entered and will destroy the previous pages. The notice page will be retained as a check sheet. This issuance, together with appended pages, is a separate publication. Each notice is to be retained by stocking points until Military Standard is completely revised or cancelled.

FSC 83GP

MIL-STD-1491

DEPARTMENT OF DEFENSE

Washington, DC 20301

Glossary of Knitting Imperfections

MIL-STD-1491

1. This standard has been approved for use by the Department of the Army, Navy and Air Force effective 3 December 1971.
2. Recommended corrections, additions or deletions should be addressed to US Army Natick Laboratories (GL), Natick, MA.

Supersedes Page ii of 3 December 1971

MIL-STD-1491

Foreign matter	<ul style="list-style-type: none"> • Waste, fly or extraneous material that has been knit into the fabric or spun into the yarn.
Fuzzy	<ul style="list-style-type: none"> • A fabric condition characterized by excessive hairiness.
Heavy yarn	<ul style="list-style-type: none"> • Yarn of a noticeably larger diameter than normally being used in the fabric.
Hole	<ul style="list-style-type: none"> • A place in the fabric where two or more contiguous loops or yarns have been ruptured.
Horizontal streaks	<ul style="list-style-type: none"> • (See "Barre").
Kink	<ul style="list-style-type: none"> • A place in the fabric where a short length of yarn has doubled on itself.
Knot	<ul style="list-style-type: none"> • Self-descriptive.
Ladder	<ul style="list-style-type: none"> • (See "Run").
Lint	<ul style="list-style-type: none"> • (See "Foreign Matter").
Loose course	<ul style="list-style-type: none"> • A row of loops in the width or crosswise direction that is larger, looser or longer than the body material.
Loose yarn	<ul style="list-style-type: none"> • Yarn that has been knit-in under insufficient tension.
Luster difference	<ul style="list-style-type: none"> • Self-descriptive (see "Barre", "Mixed yarn").
Mend	<ul style="list-style-type: none"> • Damaged, defaced or torn fabric that has been fixed or repaired.
Miss-knit	<ul style="list-style-type: none"> • Wrong formation or description of the normal knitting pattern (see "Float").

MIL-STD-1491

Vertical lines	Lengthwise marks occurring in knitted fabric. Sometimes called doglines or needle lines.
Washboards	A riagy effect on the fabric which can be caused by uneven tension between feeds or by variations of yarn denier.
Weak spot	Places in the fabric which have beer abnormally weakened during any part of the operations through which it has passed. A latent defect that is not normally observable in normal inspection.
Whispering	Breaking or fraying of the individual filaments of the yarn.
Width variation	- Self-descriptive.
Yarn variation	Yarn irregularity of weight per unit length. Usually either a course or wale is noticeably thicker or thinner than adjacent yarns. Short term - 1 to 10 times the fiber length, Medium term - 10 to 100 times the fiber length. Long term - 100 to 1000 (or more) times the fiber length.

Custodians:

Army - GL
Navy - SA
Air Force - 11

Preparing activity:

Army - GL
Project No. 83GP-0338

Review activities:

Navy - AS
Air Force - 45, 82

User activities:

Army - AV
Navy - MC, SH, YD

Supersedes Page 7 of 3 December 1971

MIL-STD-1491

PHOTOGRAPHIC

SUPPLEMENT

TO

MIL-STD-1491

CAUTION

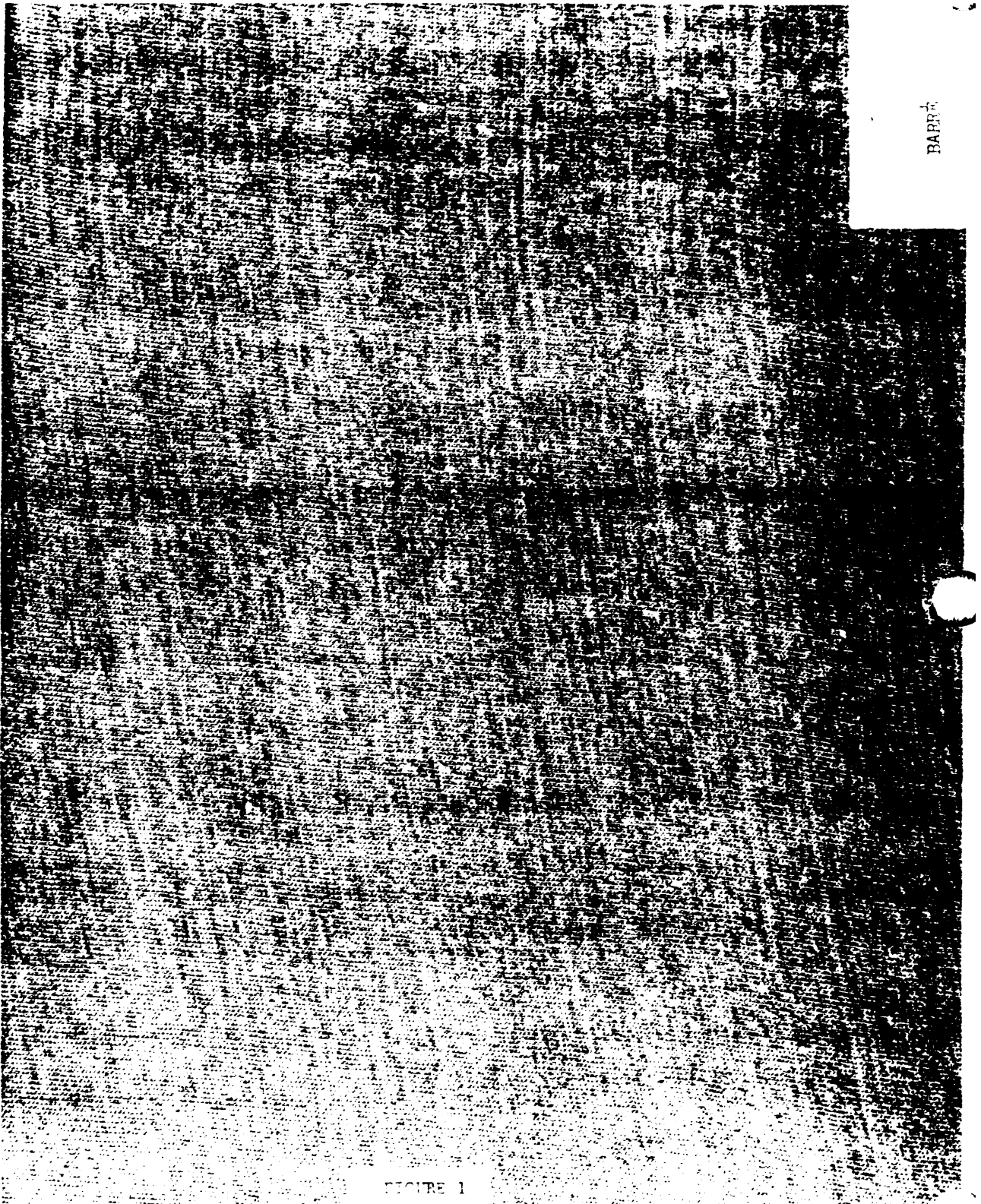
These photographs are not acceptance limits. They are only visual guides to aid in recognition of the more common knitting defects.

MIL-STD-1491

CONTENTS

	FIGURE
Barre	1
Birdseyes (Tucking defect)	2
Bowing	3
Crackmarks	4
Creases	5
Dropped Stitches	6
Heavy yarn	7
Hole	8
Loose Course	9
Missing yarn	10
Press off	11
Run	12
Slub	13
Spots	14
Thin yarn	15
Tucking defect	16
Vertical line	17
Vertical lines	18

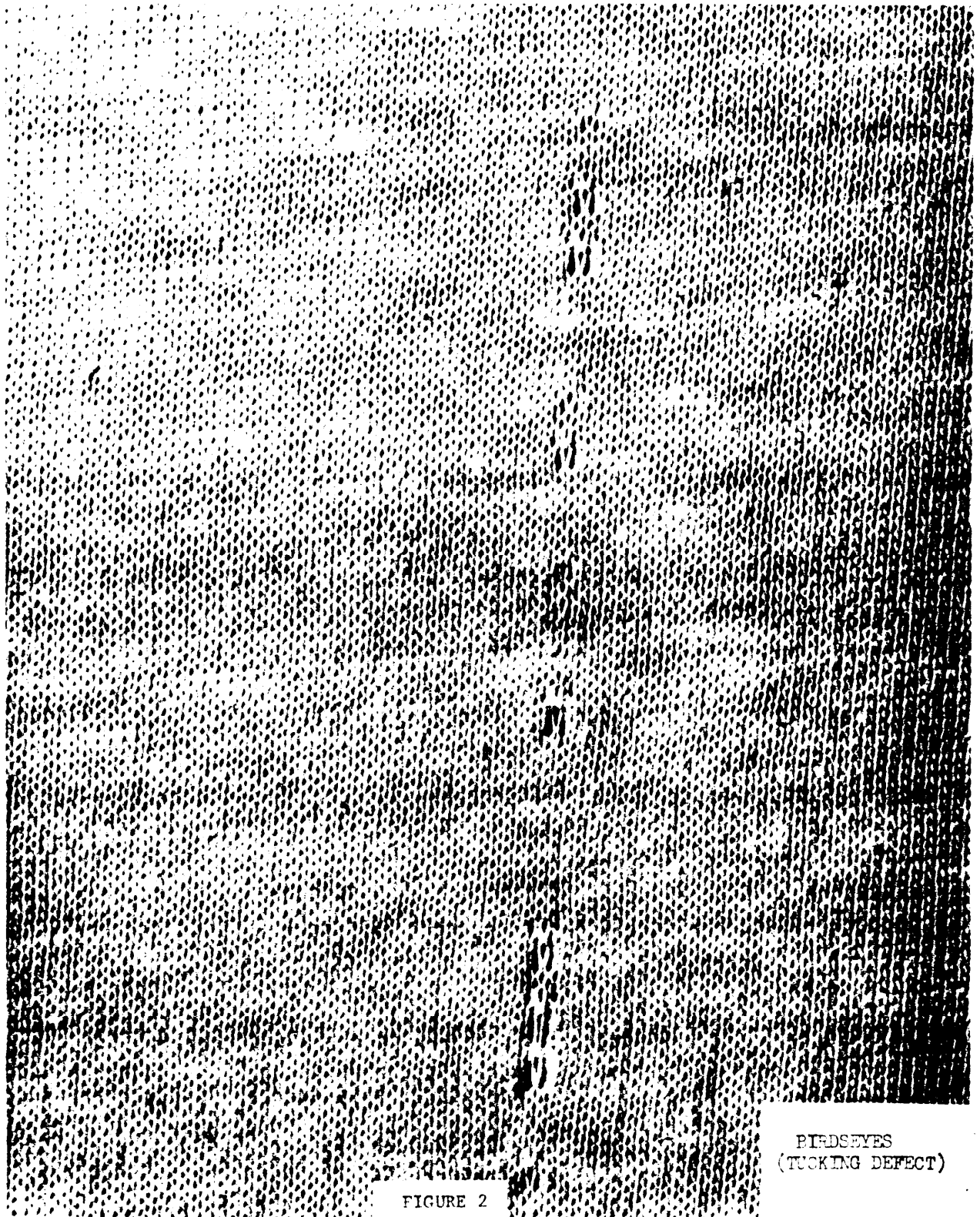
MIL-STD-1491



BAPE

FIGURE 1

MIL-STD-1491



MIL-STD-1491

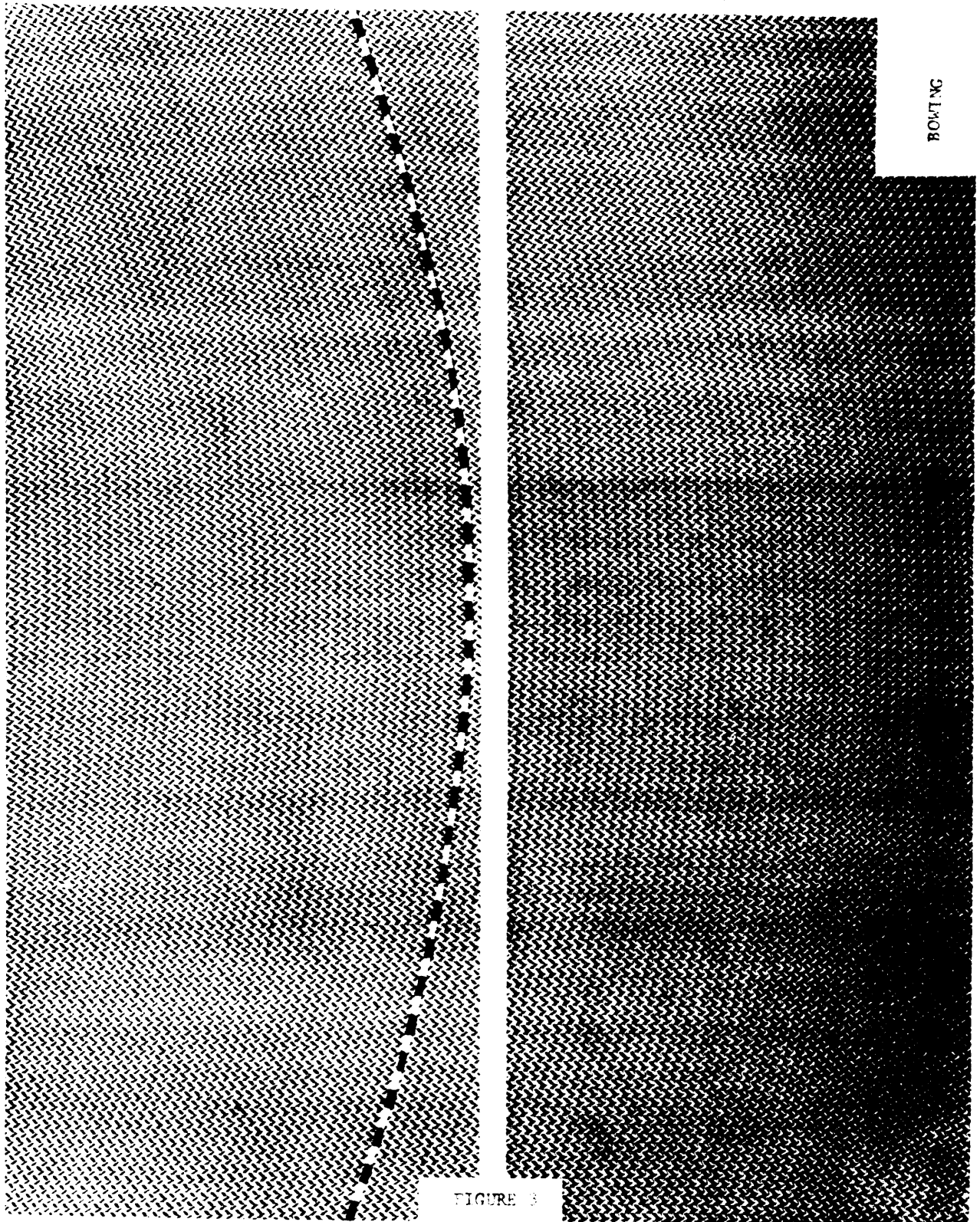
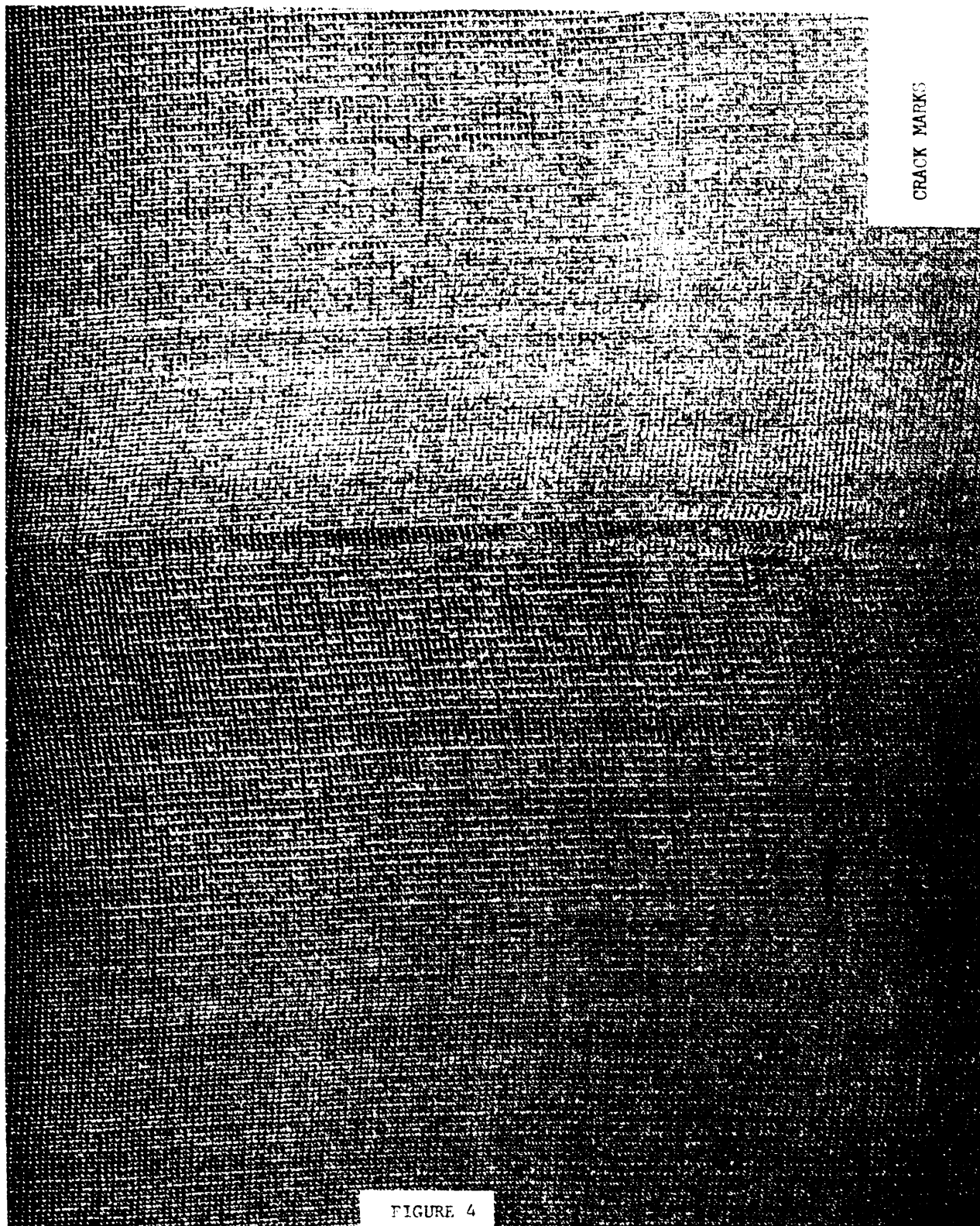


FIGURE 3

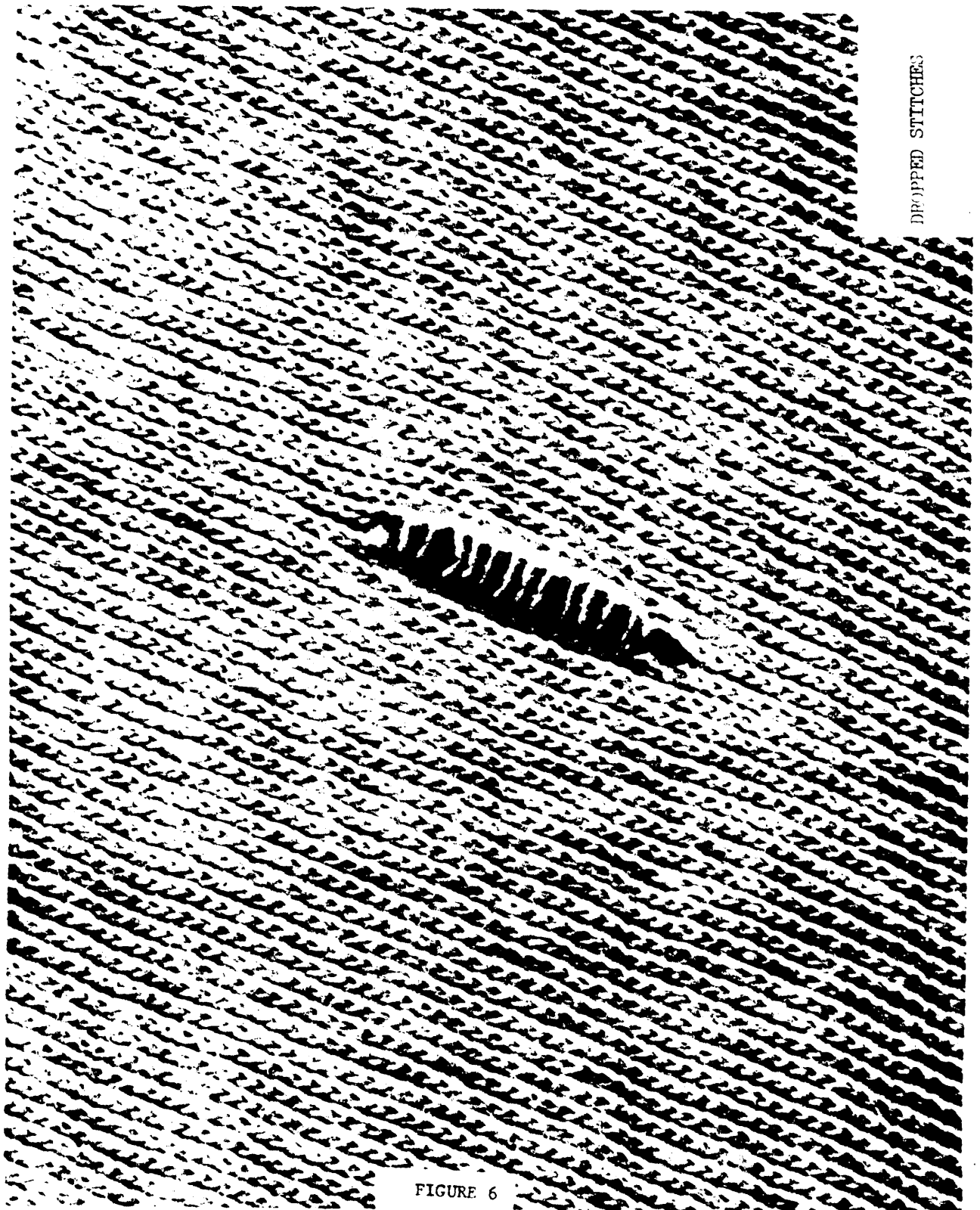
MIL-STD-1491



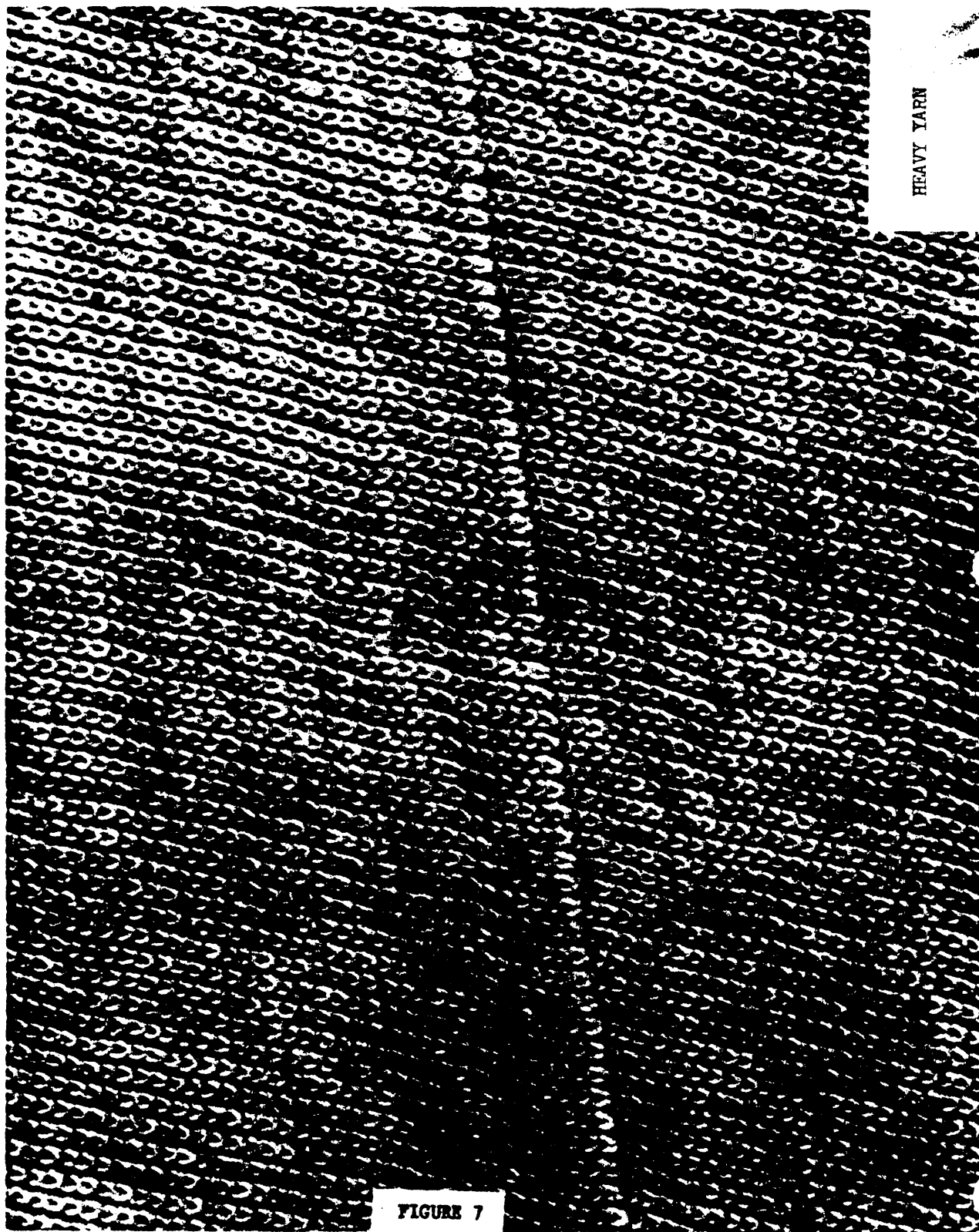
MIL-STD-1491



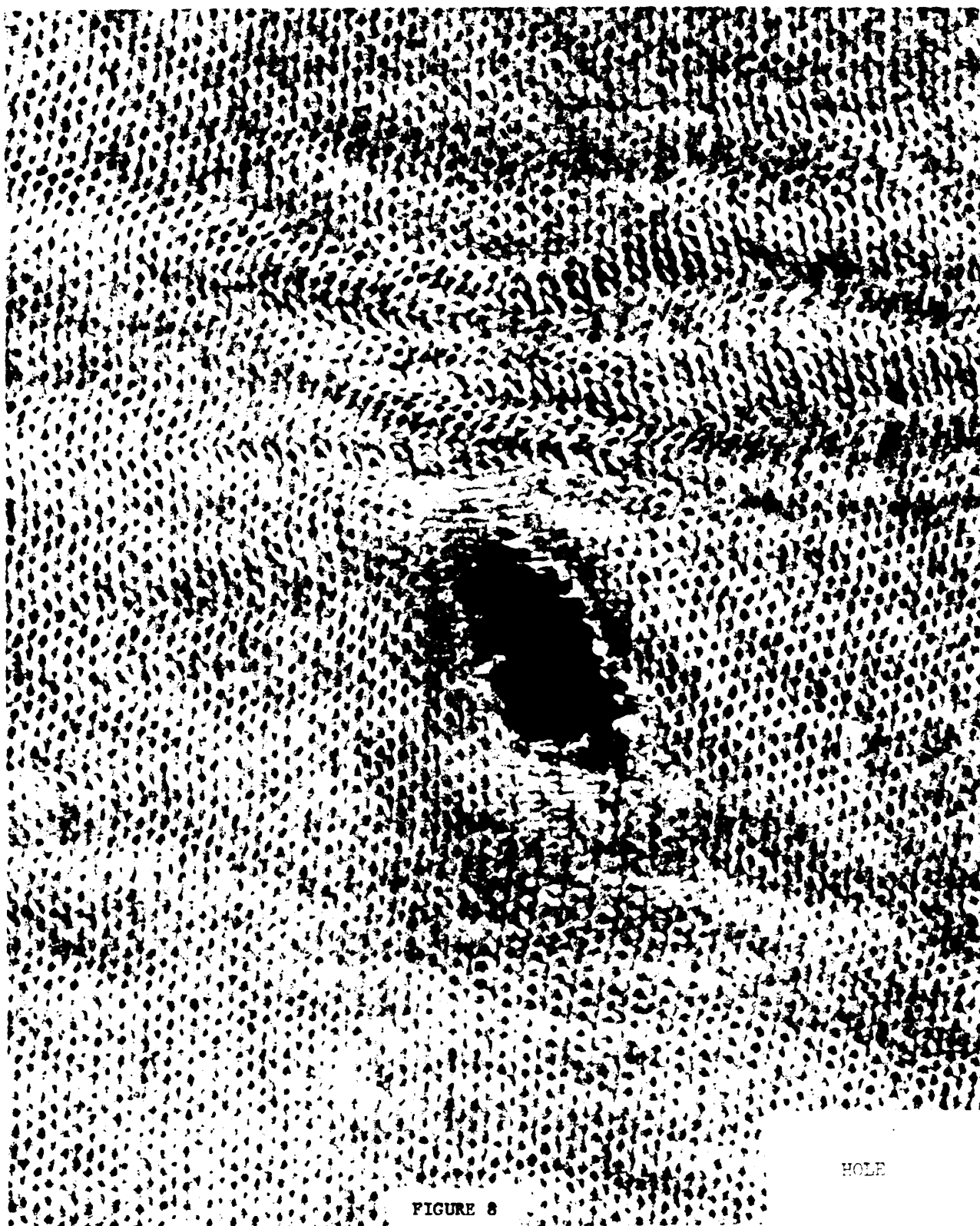
MIL-STD-1491



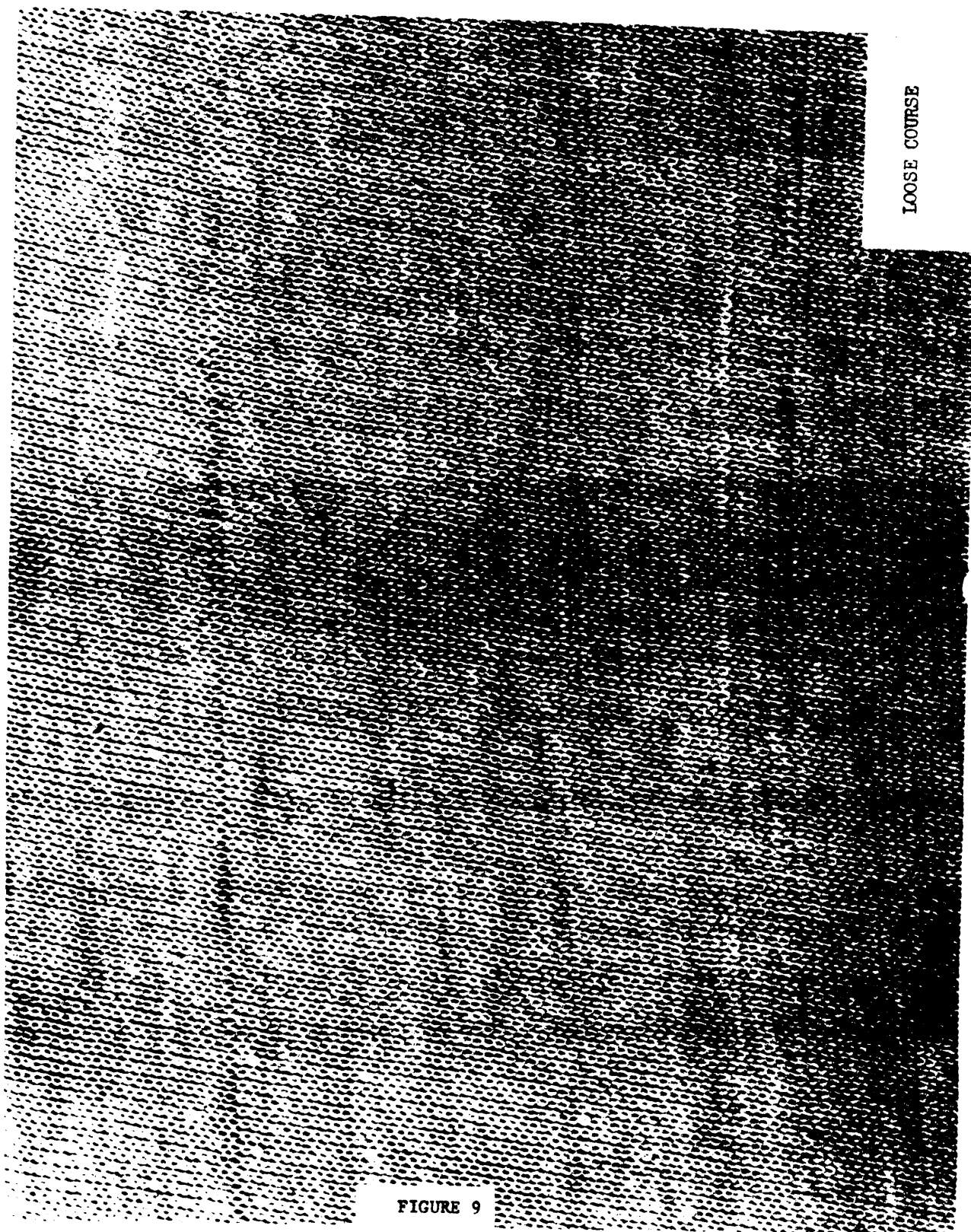
MIL-STD-1491



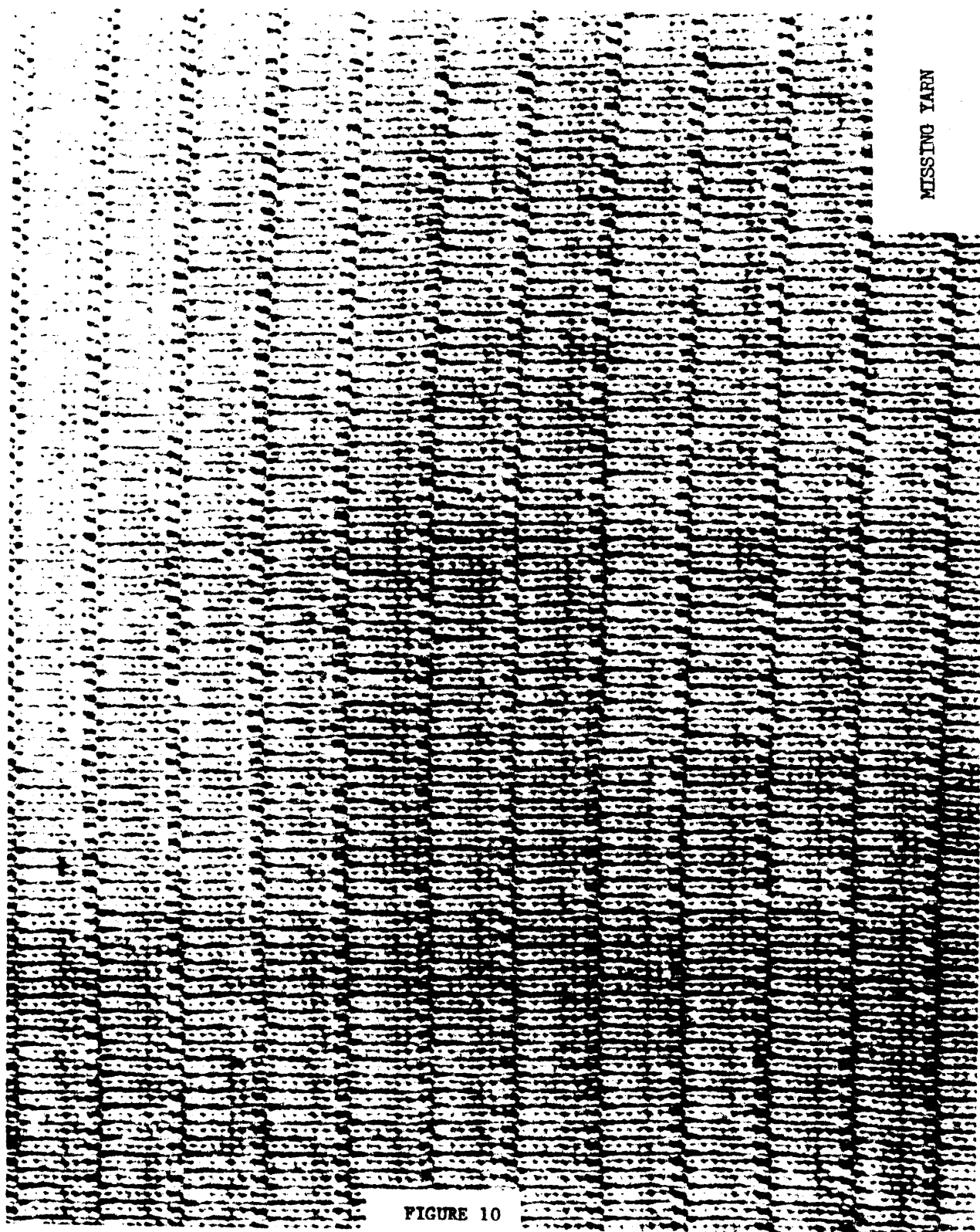
MIL-STD-1491



MIL-STD-1491



MIL-STD-1491



MIL-STD-1491

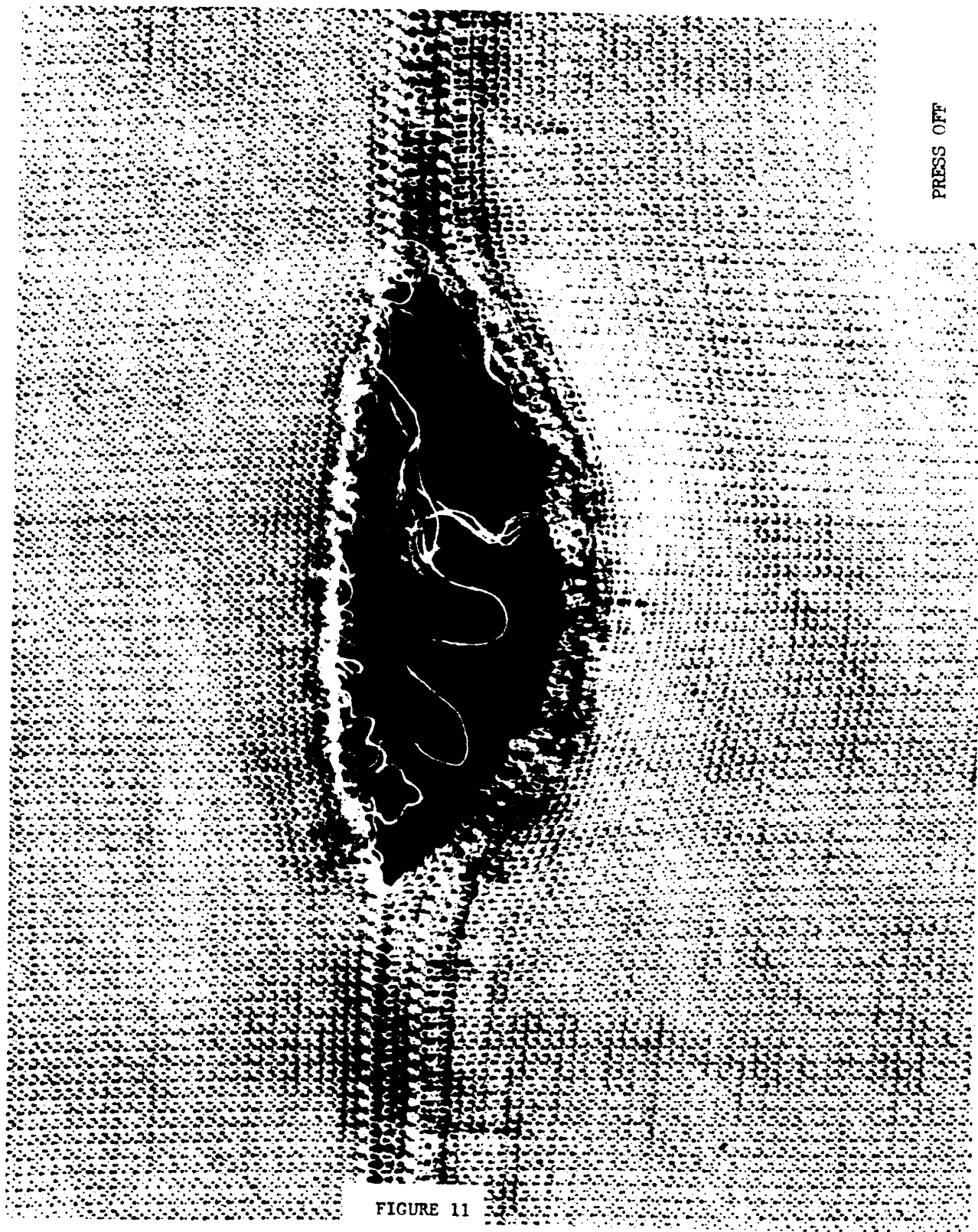


FIGURE 11

MIL-STD-1491

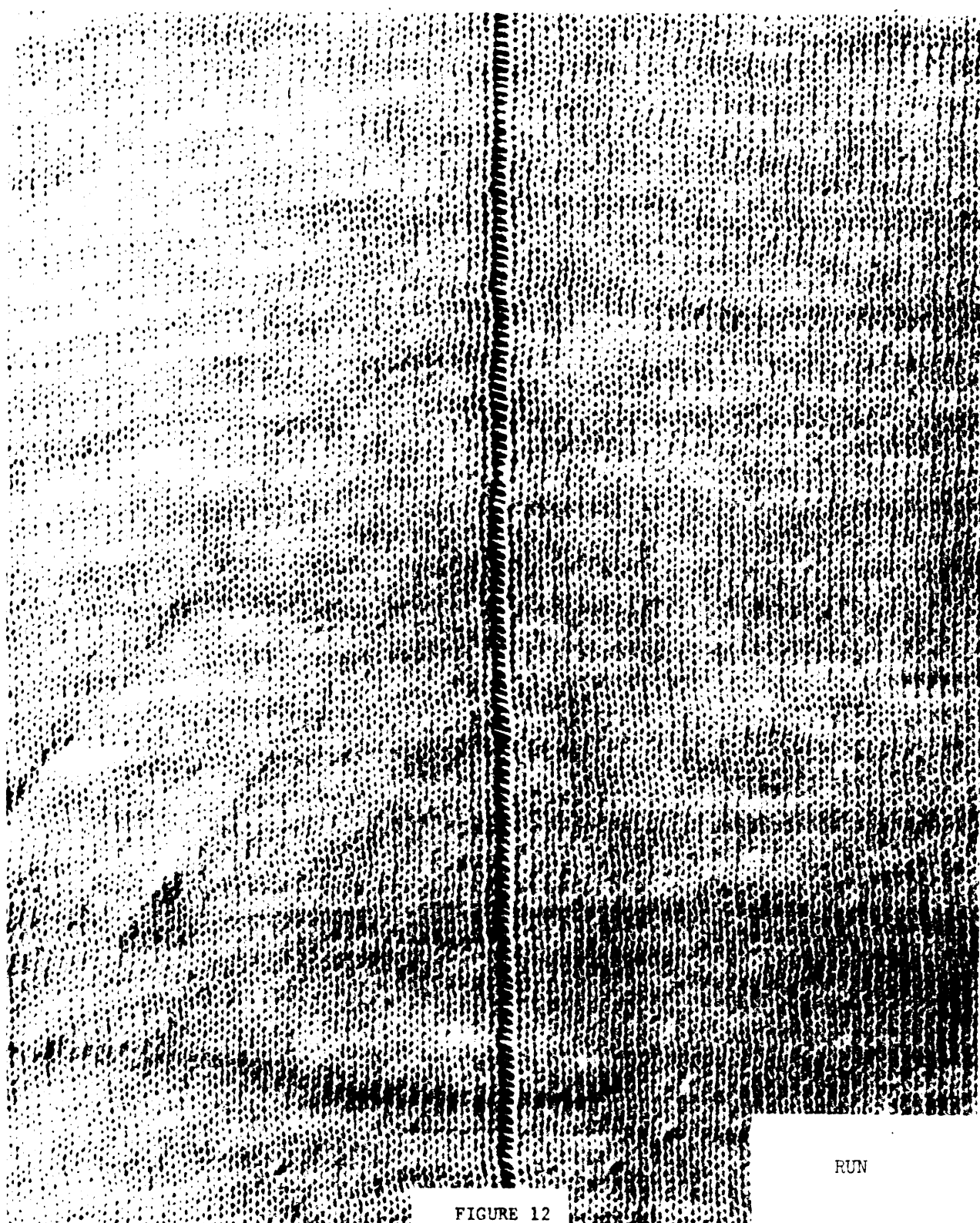


FIGURE 12

RUN

MIL-STD-1491

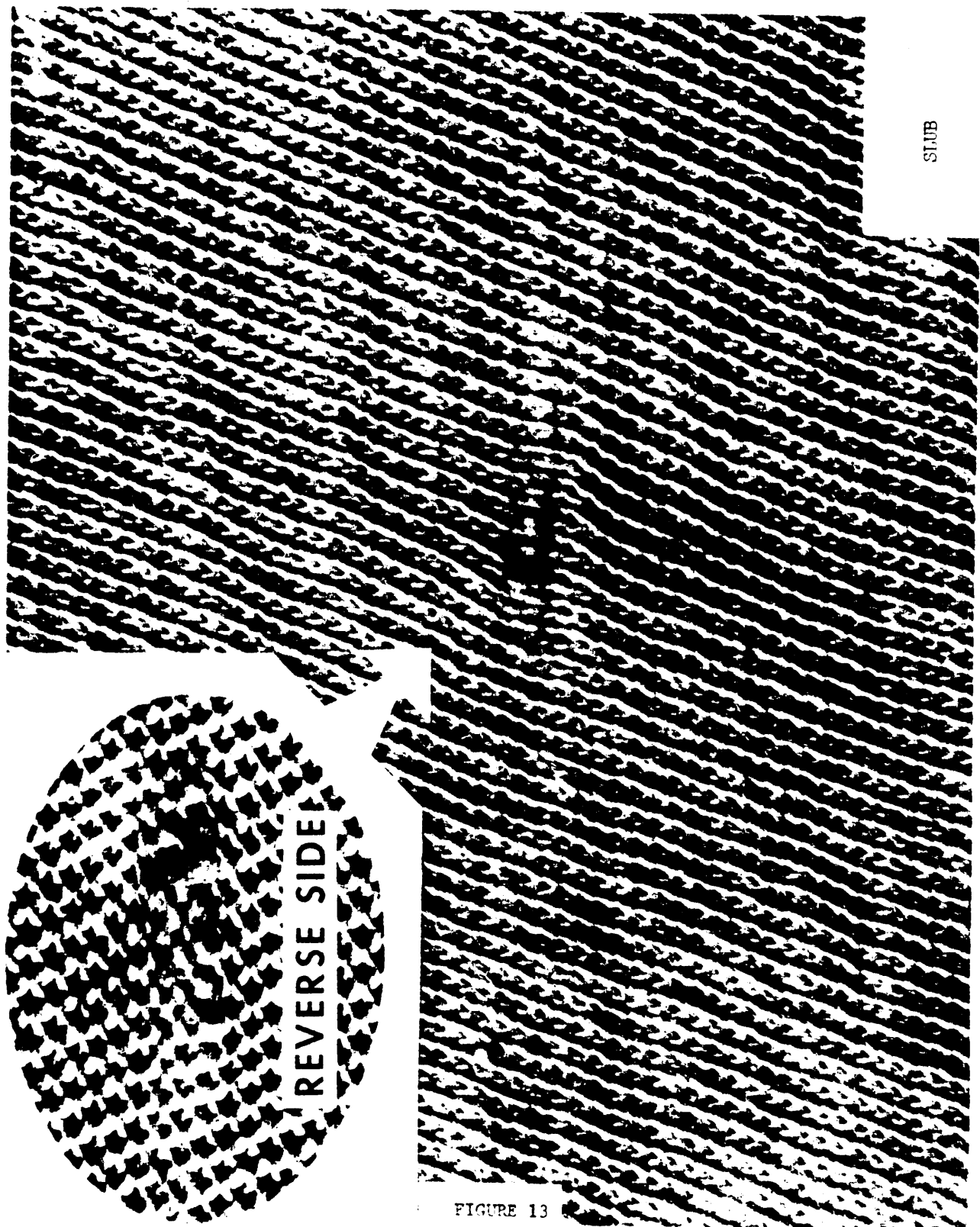


FIGURE 13

MIL-STD-1491



SPOTS

FIGURE 14

MIL-STD-1491

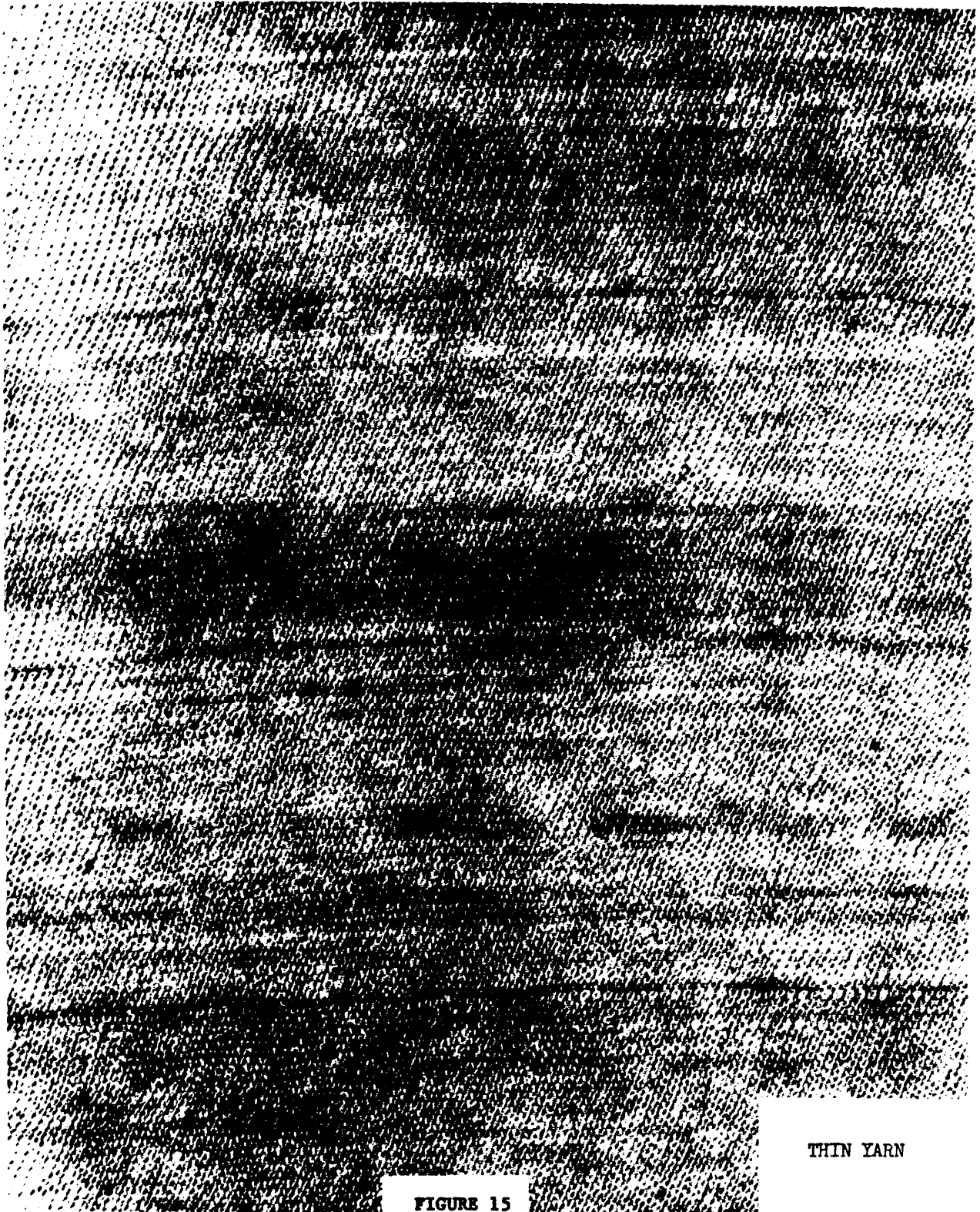
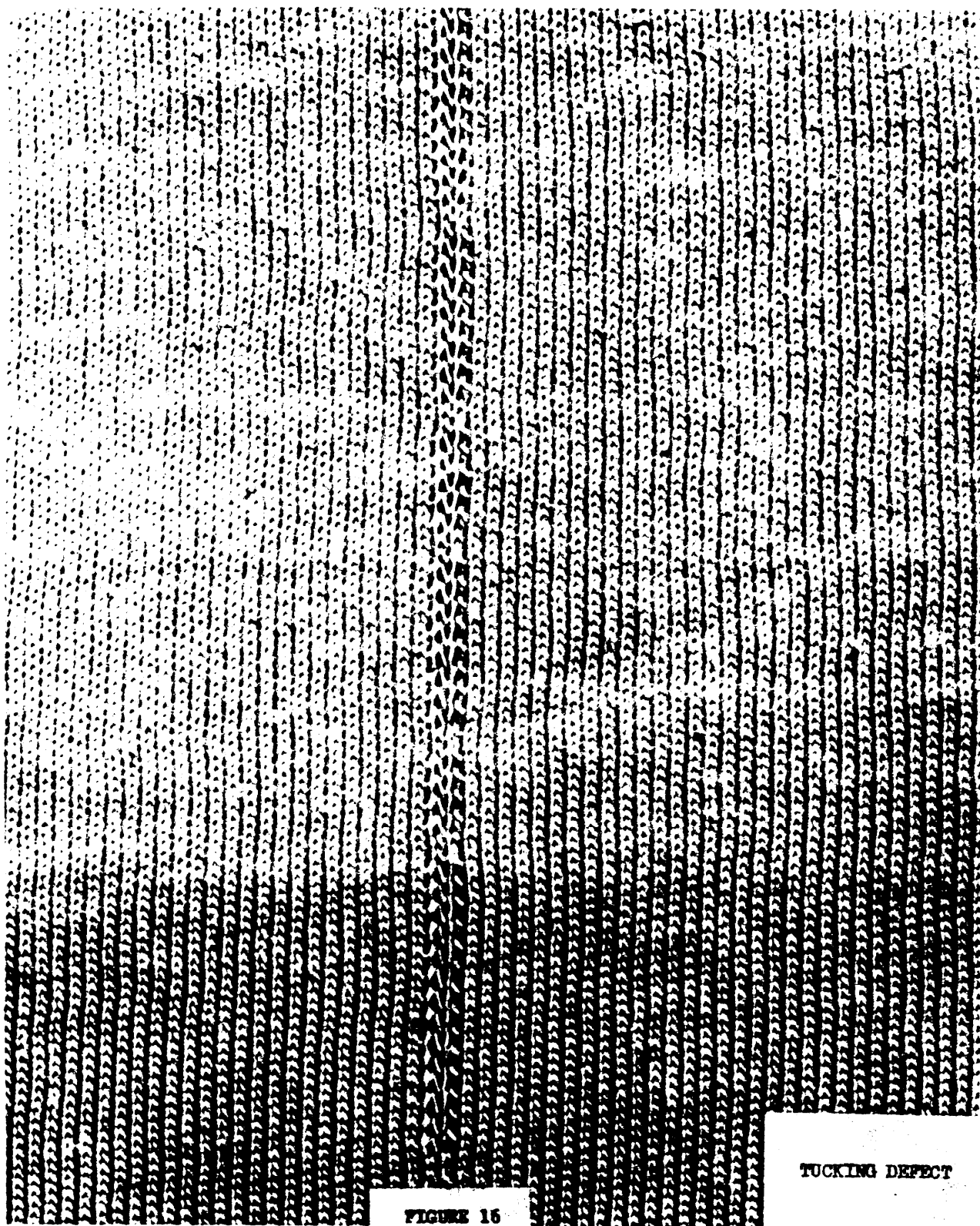


FIGURE 15

MIL-STD-1491



MIL-STD-1491

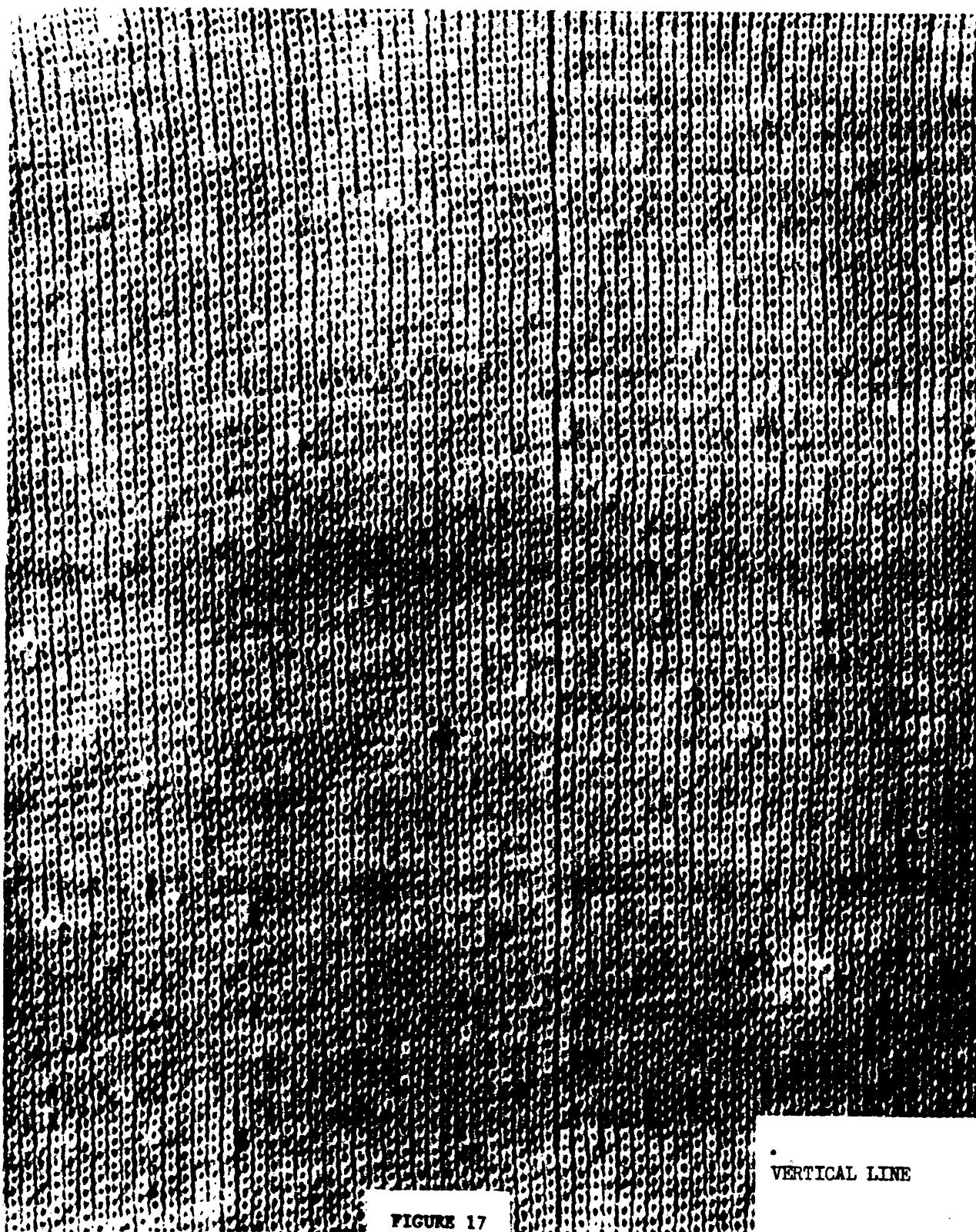
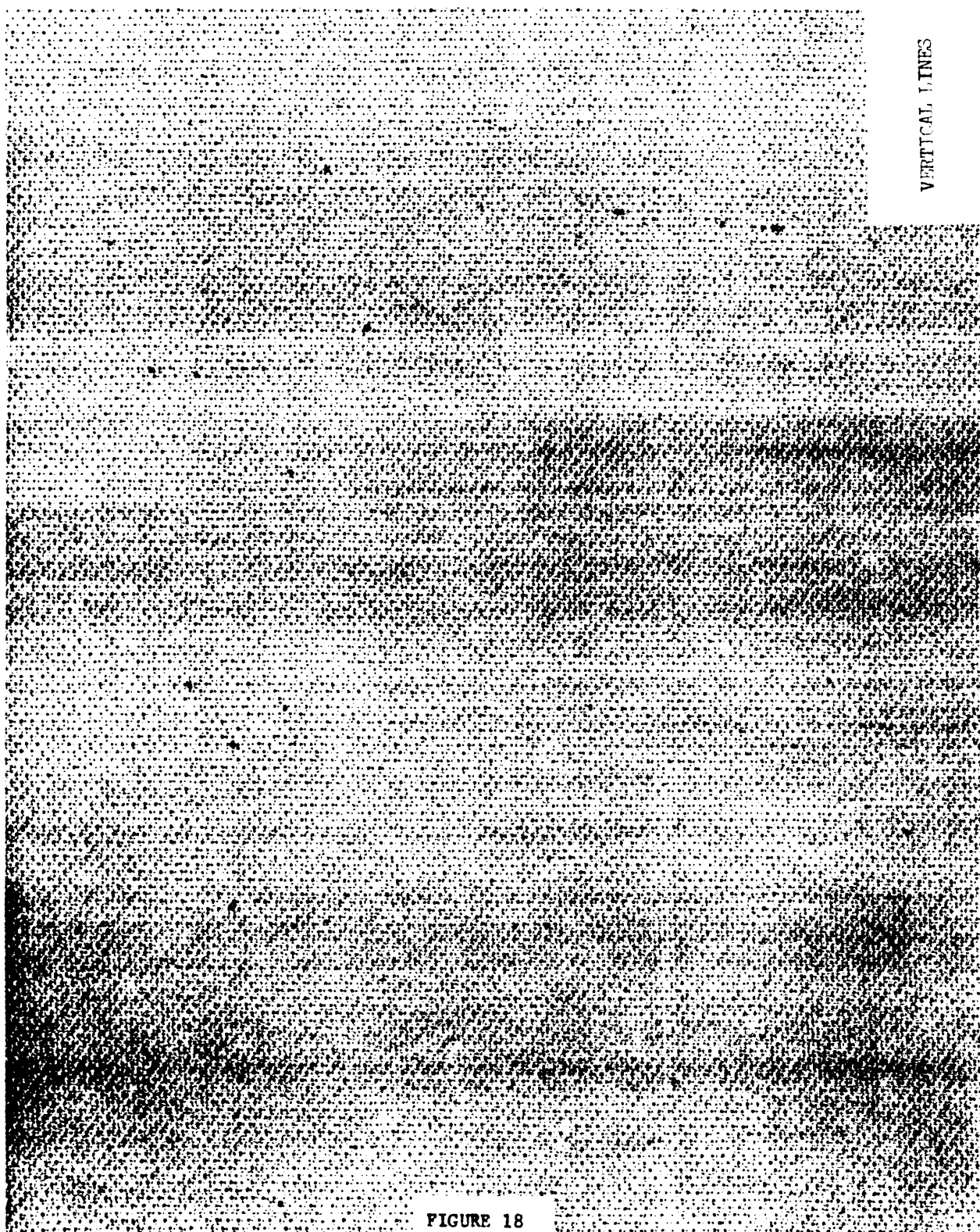


FIGURE 17

VERTICAL LINE

MIL-STD-1491



VERTICAL LINES

FIGURE 18

