

MILITARY STANDARD

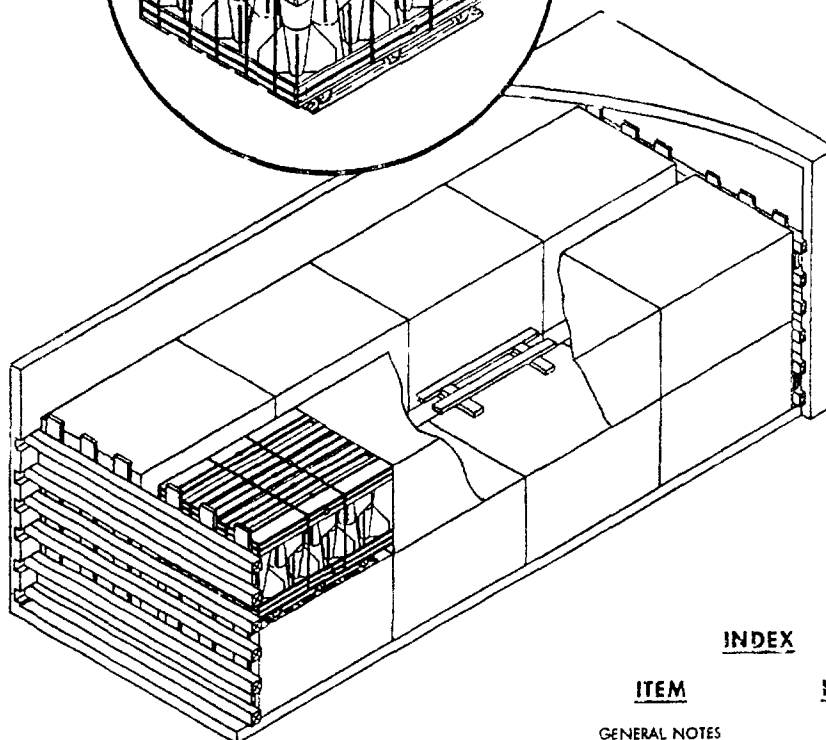
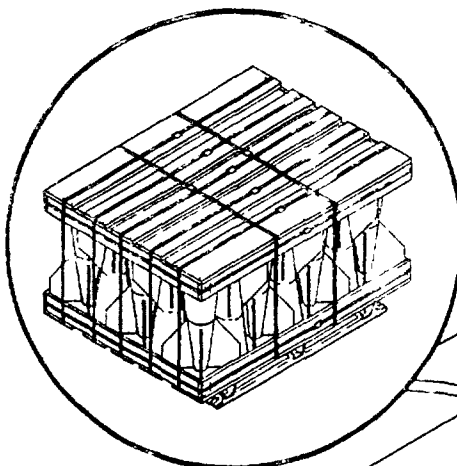
MIL-STD-1386-7
(NAVY)

1 MAY 1977

LOADING OF HAZARDOUS MATERIALS AND ASSOCIATED ITEMS IN MILVAN CONTAINERS FIN ASSEMBLY, BOMB, FOR 500 LB L D BOMB (UNCRATED) FLEET ISSUE UNIT LOAD

UNIT LOAD DATA

UNIT LOAD DRAWING	WK-54/218
WEIGHT	904 LBS
DIMENSIONS	55 1/2 L x 41 1/2 W x 32 H
CUBIC	42.6 CU FT
HAZARD CLASSIFICATION	INERT
HAZARD GUARD CLASS	NONE



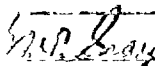
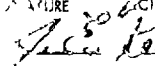
INDEX

ITEM	PAGE
GENERAL NOTES	2
TOFC/COFC & HIGHWAY	2 & 3

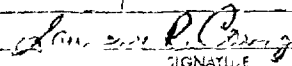
NOTES

- 1 UNLESS OTHERWISE SPECIFIED DIMENSIONS ARE IN INCHES
- 2 FOR CROSS REFERENCE TO ASSOCIATED PALLETIZING, TRUCKLOADING AND CARLOADING MILITARY STANDARDS REFER TO COMPREHENSIVE INDEX NWHL NO. 4200

AUTHORIZED FOR TRAILER-ON-FLAT-CAR (TOFC), CONTAINER-ON-FLAT-CAR (COFC), CONTAINERSHIP AND HIGHWAY SHIPMENTS

 1/21/77
 SIGNATURE (AIR) BYSCOM BY DIRECTION DATE
 1/21/77
 SIGNATURE (AIR) BYSCOM BY DIRECTION DATE

ORIGINATOR


SIGNATURE

NAVY WEAPONS HANDLING LABORATORY
MADENALE, NEW JERSEY

MILVAC-1386-7 (NAVY)

GENERAL NOTES

- THIS DOCUMENT GIVES DETAILED INSTRUCTIONS FOR LOADING THE MILVAN CONTAINER WITH FLEET ISSUE UNIT LOADS OF 500 LB. L.D. BOMB FIN ASSEMBLIES (UNCRATED). THE UNIT LOAD SHALL BE IN ACCORDANCE WITH WR-54/218
2. THE LOADED CONTAINER MAY BE TRANSPORTED OVER PUBLIC HIGHWAYS ON THE MILVAN CHASSIS USING THE FOLLOWING CONFIGURATIONS
 - A. CONTAINER ON 20-FT MILVAN CHASSIS WITH A DOUBLE BOGIE LOCATED IN THE NEXT TO LAST HOLE AND PULLED BY A TRACTOR WITH A SINGLE DRIVE AXLE
 - B. TWO CONTAINERS ON A 40-FT MILVAN CHASSIS WITH TWO BOGIES LOCATED IN THE REAR MOST POSITION AND PULLED BY A TRACTOR WITH A DOUBLE DRIVE AXLE
 3. THE LOADED CONTAINER MAY ALSO BE TRANSPORTED OVER PUBLIC HIGHWAYS USING COMMERCIAL EQUIPMENT OF APPROPRIATE CAPACITY
 4. THE LOADED CONTAINERS MAY BE SHIPPED TOFC/COFC. WHEN SHIPPING TOFC THE FOLLOWING CONFIGURATIONS ARE AUTHORIZED
 - A. CONTAINER ON 20-FT MILVAN CHASSIS EQUIPPED WITH DOUBLE BOGIES
 - B. TWO CONTAINERS ON 40-FT MILVAN CHASSIS EQUIPPED WITH DOUBLE BOGIES

WARNING

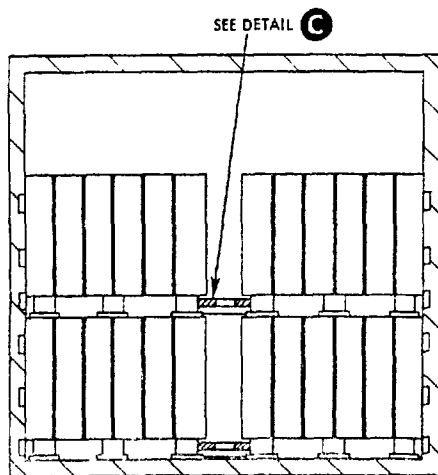
CHASSIS/CONTAINERS COUPLED INTO A 40-FT TRAILER CONFIGURATION MUST BE PLACED AT THE B-END OF THE TOFC RAILCAR. THE REAR END OF THE 40-FT UNIT WILL OVERHANG THE END OF THE CAR IF IT IS PLACED AT THE A-END. 20-FT AND 40-FT UNITS CAN BE LOADED ON THE SAME CAR.

5. THE MILVAN SHALL BE EQUIPPED WITH A MECHANICAL LOAD-BRACING SYSTEM THAT MEETS THE REQUIREMENTS OF THE BUREAU OF EXPLOSIVES PAMPHLET 6C AND SHIPPED ON FLATCARS THAT MEET THE REQUIREMENTS OF PAMPHLET 6C
6. IN ADDITION TO THE BELT RAILS REQUIRED BY PAMPHLET 6C, THE MILVAN CONTAINER HAS BELT RAILS AT THE 72" AND 83" HEIGHTS FROM THE CONTAINER FLOOR
7. CONTAINERS ARE EQUIPPED WITH 25 CROSSMEMBERS. UNUSED CROSSMEMBERS MUST REMAIN WITH THE CONTAINER AND SHALL BE FASTENED INTO BELT RAILS FOR SHIPMENT

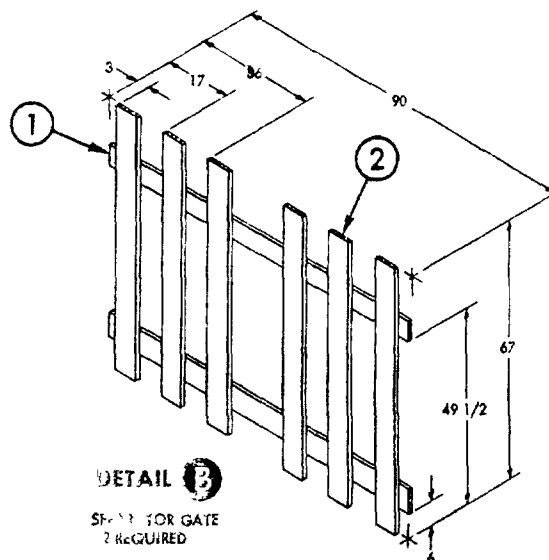
CAUTION

WHEN POSITIONING CROSSMEMBERS, MAKE A VISUAL CHECK TO ENSURE THAT CROSSMEMBERS ARE LOCKED SECURELY IN PLACE.

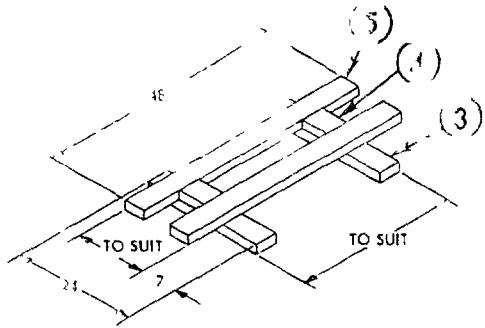
8. THE DUNNAGE SPECIFIED IS OF NOMINAL SIZE. FOR EXAMPLE, 1 x 4 MATERIAL IS ACTUALLY 3/4 THICK BY 3 5/8 WIDE AND 2 x 6 MATERIAL IS ACTUALLY 1 5/8 THICK BY 5 1/2 WIDE
9. WHEN THE VOID BETWEEN THE CROSSMEMBER AND THE SEPARATOR GATE IS GREATER THAN ONE INCH USE FILL MATERIAL TO SHIM BETWEEN CROSSMEMBER AND LOAD AS SHOWN IN DETAIL D
10. APPLICABLE MATERIAL SPECIFICATIONS
 - DUNNAGE LUMBER - FED SPEC MM-L-751
 - NAILS - FED SPEC FF-N-105, COMMON CEMENT COATED
11. SWAY BRACE, DETAIL C, IS ASSEMBLED IN PLACE. INSERT SUPPORTS, PIECE 3, IN FORK POCKETS. WITH PIECE 5 AGAINST PALLET POST, NAIL TO PIECE 3 WITH THREE 10d NAILS. CUT PIECE 4 TO FIT BETWEEN PIECES 5 AND NAIL TO PIECE 3 WITH THREE 10d NAILS
12. AFTER BLOCKING AND BRACING HAS BEEN INSPECTED ATTACH SHIPPING DOCUMENTS INSIDE THE CONTAINER IN AN ACCESSIBLE AREA, CLOSE AND SEAL CONTAINER DOORS



SECTION A-A

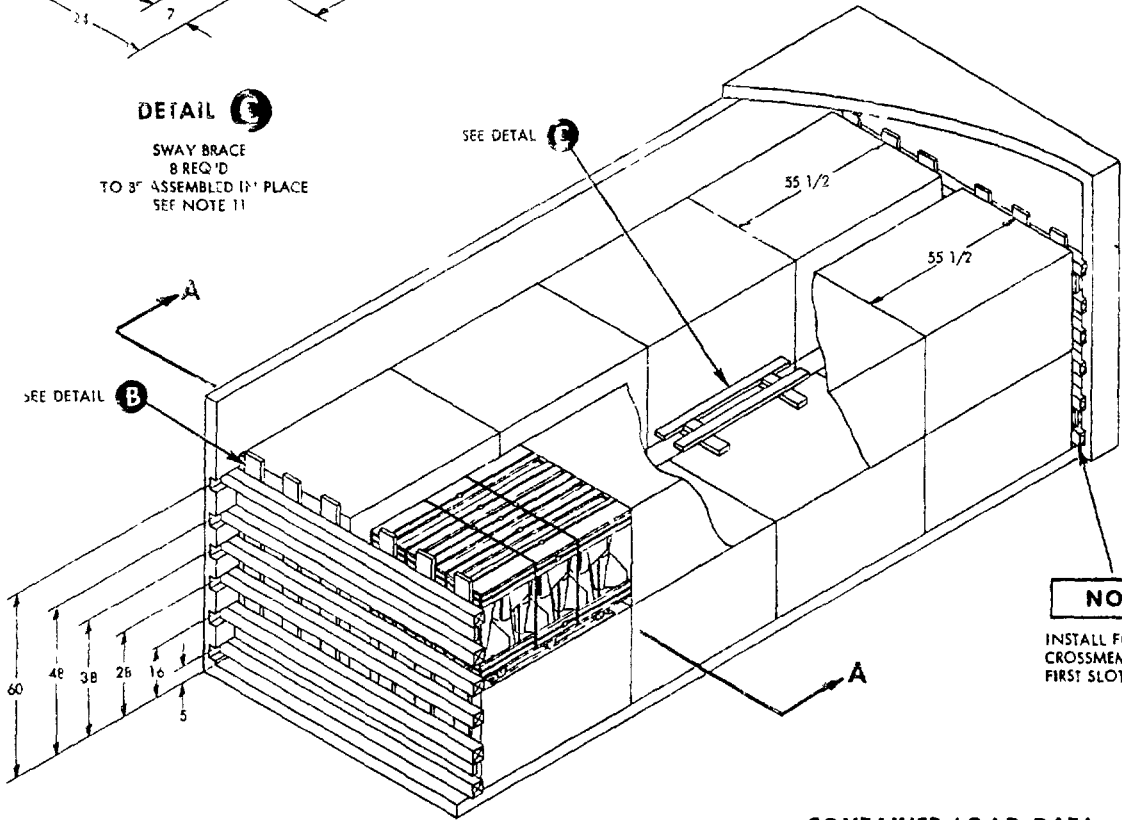


MAIL-STD-1386-7 (NAVY)



DETAIL C

SWAY BRACE
8 REQ'D
TO BE ASSEMBLED IN PLACE
SEE NOTE 11

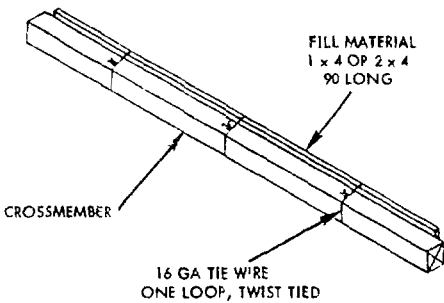


NOTE
INSTALL FORWARD
CROSSMEMBERS IN
FIRST SLOT

CONTAINER LOAD DATA

NUMBER OF UNIT LOADS	16
NUMBER OF CROSSMEMBERS REQ'D	12
LOAD WEIGHT	14,464 LBS
DUNNAGE WEIGHT	500 LBS
CONTAINER WEIGHT	5,700 LBS
GROSS WEIGHT	20,664 LBS

* = CLINCHED



DETAIL D

FILL MATERIAL
SEE NOTE 9

PIECE NO.	DESCRIPTION	SIZE	NO. OF PIECES REQ'D	NAIL TO	NUMBER	SIZE
					NAILS	
5	STRINGER	2 x 4 x 48	16	3	3/JOINT	10d
4	SPACER	2 x 4 TO SUIT	16	3	3	10d
3	SUPPORT	2 x 4 x 24	16	SEE 4 & 5	-	-
2	VERTICAL	1 x 6 x 67	12	1	3/JOINT	*6d
1	HORIZONTAL	1 x 6 x 90	4	SEE 2	-	-

LIST OF MATERIALS & NAILING DATA