

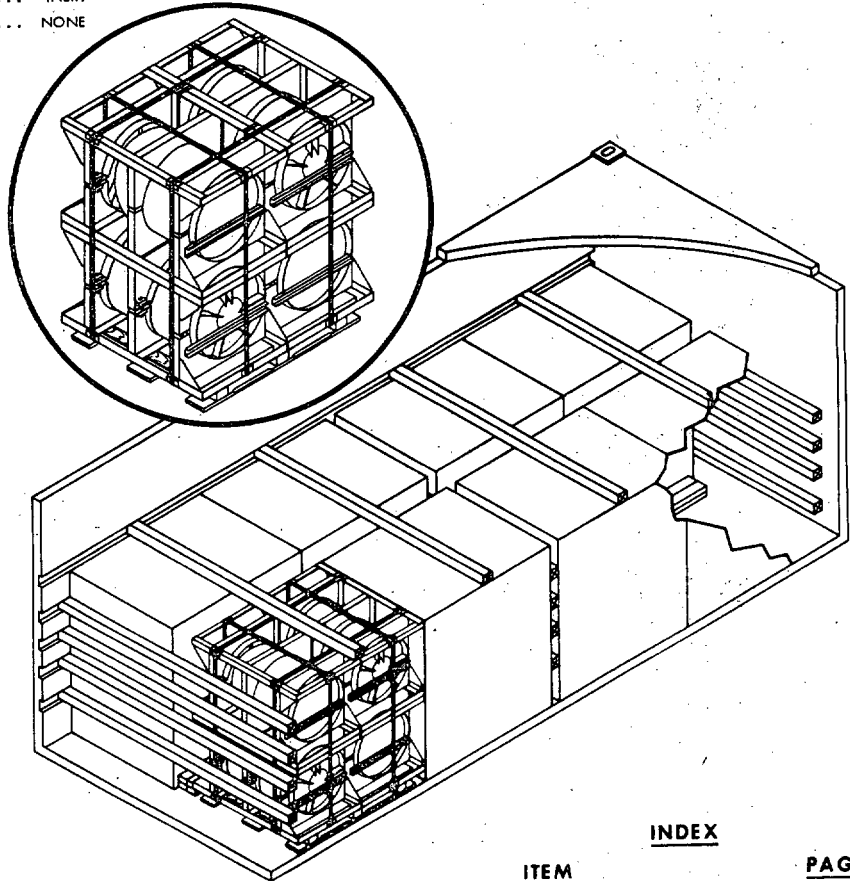
**MILITARY STANDARD**  
**LOADING OF HAZARDOUS**  
**MATERIALS AND ASSOCIATED ITEMS**  
**IN MILVAN CONTAINERS**  
**EXPLOSIVE SECTION MK 2 MOD 2 (EMPTY)**  
**FOR MK 57 UNDERWATER MINE**  
**IN CRATE MK 103 MOD 0**  
**DOMESTIC UNIT LOAD**

**MIL-STD-1386-59**  
**(NAVY)**

28 FEBRUARY 1975

**UNIT LOAD DATA**

UNIT LOAD DRAWING ..... WR-53/789  
 DIMENSIONS ..... 52 L x 42 W x 56 1/2 H  
 CUBE ..... 71.4 CU FT  
 WEIGHT (APPROXIMATE) ..... 1296 LBS  
 DOT HAZARD CLASSIFICATION ..... INERT  
 COAST GUARD CLASS ..... NONE



**NOTES:**

1. UNLESS OTHERWISE SPECIFIED DIMENSIONS ARE IN INCHES.
2. FOR CROSS REFERENCE TO ASSOCIATED PALLETIZING, TRUCKLOADING AND CARLOADING MILITARY STANDARDS, REFER TO THE INDEX TO STANDARDS, MIL-HDBK-236 (NAVY).

**INDEX**

ITEM	PAGE
GENERAL NOTES	2
TOFC/COFC, CONTAINERSHIP & HIGHWAY	3

**FSC 8140**

**AUTHORIZED FOR TRAILER-ON-FLAT-CAR (TOFC), CONTAINER-ON-FLAT-CAR (COFC), CONTAINERSHIP AND HIGHWAY SHIPMENTS**

*M.S. Gray* NWHL 2/21/75  
 SIGNATURE TECHNICAL DIRECTION AGENT (TDA) DATE  
*J.E. Kelly* 2/21/75  
 SIGNATURE SEASYS COM BY DIRECTION DATE

**ORIGINATOR**

*S.R. Petros* 2/21/75  
 SIGNATURE

**NAVAL WEAPONS HANDLING LABORATORY**  
**N A D EARLE, NEW JERSEY**

PAGE 1 OF 3

**MIL-STD-1386-59 (NAVY)****GENERAL NOTES**

1. THIS DOCUMENT GIVES DETAILED INSTRUCTIONS FOR LOADING THE MILVAN CONTAINER WITH DOMESTIC UNIT LOADS OF EXPLOSIVE SECTIONS MK 2 MOD 2 (EMPTY) FOR MK 57 UNDERWATER MINES IN CRATE MK 103 MOD 0. THE EXPLOSIVE SECTIONS SHALL BE PALLETIZED IN ACCORDANCE WITH WR-53/789.
2. THE MILVAN SHALL BE EQUIPPED WITH A MECHANICAL LOAD BRACING SYSTEM THAT MEETS THE REQUIREMENTS OF THE BUREAU OF EXPLOSIVES PAMPHLET 6C.
3. IN ADDITION TO THE BELT RAILS REQUIRED BY PAMPHLET 6C, THE MILVAN CONTAINER HAS BELT RAILS AT THE 72 AND 83 INCH HEIGHTS FROM THE CONTAINER FLOOR.

**CAUTION**

WHEN POSITIONING CROSSMEMBERS MAKE A VISUAL CHECK TO ENSURE THAT THE CROSSMEMBERS ARE LOCKED SECURELY IN PLACE.

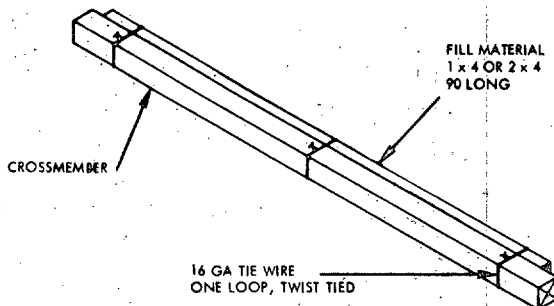
4. CONTAINERS ARE EQUIPPED WITH 25 CROSSMEMBERS. UNUSED CROSSMEMBERS MUST REMAIN WITH THE CONTAINER AND SHALL BE FASTENED INTO BELT RAILS FOR SHIPMENT.
5. WHEN THE LONGITUDINAL SLACK BETWEEN A CROSSMEMBER AND THE UNIT LOAD IS GREATER THAN ONE INCH, USE FILL MATERIAL TO SHIM BETWEEN CROSSMEMBER AND UNIT LOAD AS SHOWN IN DETAIL A.
6. THE VOID BETWEEN THE HOLD DOWN CROSSMEMBER AND THE TOP OF THE UNIT LOAD SHALL NOT EXCEED ONE HALF INCH. IF REQUIRED, SHIM BETWEEN CROSSMEMBER AND UNIT LOAD AS SHOWN IN DETAIL B.
7. APPLICABLE MATERIAL SPECIFICATIONS:  
DUNNAGE LUMBER - FED. SPEC. MM-L-751  
NAILS - FED. SPEC. FF-N-105, TYPE II STYLE 10, COMMON BRIGHT
8. AFTER BLOCKING AND BRACING HAS BEEN INSPECTED, ATTACH SHIPPING DOCUMENTS INSIDE THE CONTAINER IN AN ACCESSIBLE AREA, CLOSE AND SEAL CONTAINER DOORS.

**TOFC/COFC, CONTAINERSHIP AND HIGHWAY**

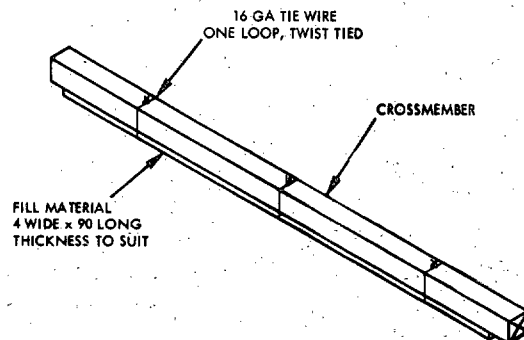
1. THE CONTAINER CONSISTS OF 8 UNIT LOADS WHICH MUST BE LOADED AND DUNNAGED IN ACCORDANCE WITH THIS DOCUMENT.
2. THE LOADED CONTAINER MAY BE TRANSPORTED OVER PUBLIC HIGHWAYS ON THE MILVAN CHASSIS USING THE FOLLOWING CONFIGURATIONS:
  - A. ONE CONTAINER ON 20 FT MILVAN CHASSIS WITH DOUBLE BOGIES AND PULLED BY A DOUBLE DRIVE AXLE TRACTOR.
  - B. TWO CONTAINERS ON A 40 FT MILVAN CHASSIS WITH DOUBLE BOGIES LOCATED IN THE REARMOST POSITION AND PULLED BY A DOUBLE DRIVE AXLE TRACTOR.
3. ONE OR TWO LOADED CONTAINERS MAY ALSO BE TRANSPORTED OVER PUBLIC HIGHWAYS ON SUITABLE COMMERCIAL EQUIPMENT OF APPROPRIATE CAPACITY THAT MEETS THE REQUIREMENTS OF THE CODE OF FEDERAL REGULATIONS.
4. THE LOADED CONTAINERS MAY BE SHIPPED TOFC/COFC. WHEN SHIPPING TOFC THE FOLLOWING CONFIGURATIONS ARE AUTHORIZED:
  - A. ONE CONTAINER ON 20 FT MILVAN CHASSIS EQUIPPED WITH DOUBLE BOGIES.
  - B. TWO CONTAINERS ON 40 FT MILVAN CHASSIS EQUIPPED WITH DOUBLE BOGIES.

**WARNING**

CHASSIS/CONTAINERS COUPLED INTO A 40-FT TRAILER CONFIGURATION MUST BE PLACED AT THE B-END OF THE TOFC RAILCAR. THE REAR END OF THE 40-FT UNIT WILL OVERHANG THE END OF THE CAR IF IT IS PLACED AT THE A-END. 20-FT AND 40-FT UNITS CAN BE LOADED ON THE SAME CAR.

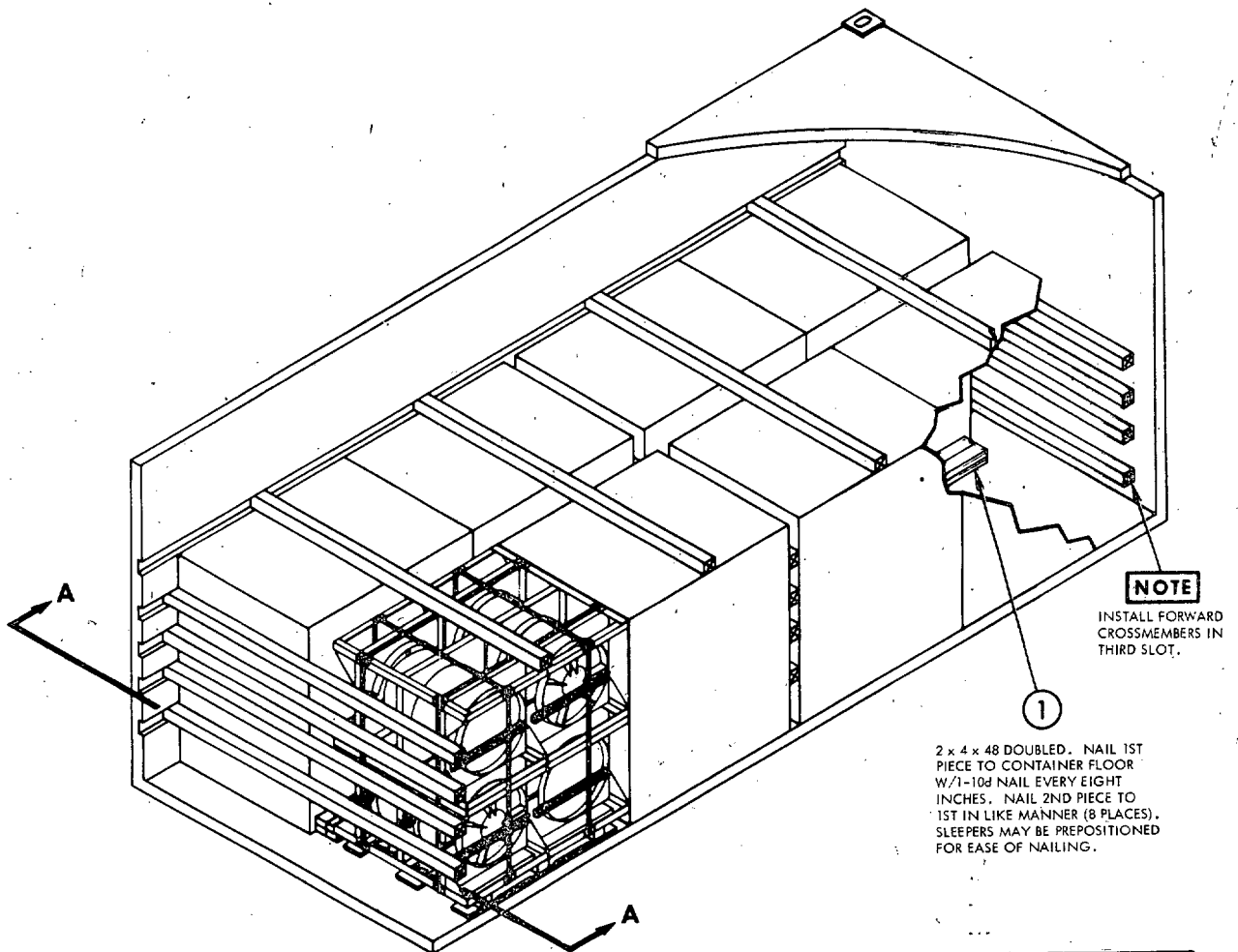


**DETAIL A**  
FILL MATERIAL  
SEE GENERAL NOTE 5

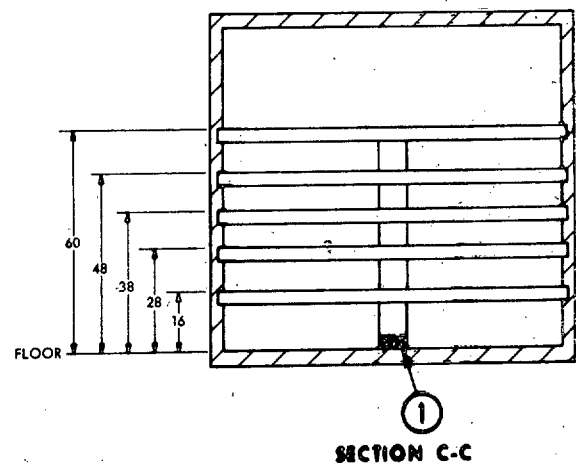


**DETAIL B**  
HOLD DOWN  
SEE GENERAL NOTE 6

## MIL-STD-1386-59 (NAVY)

**CONTAINER LOAD DATA**

NUMBER OF UNIT LOADS .....	8
NUMBER OF CROSSMEMBERS REQ'D .....	16
LOAD WEIGHT .....	10,368 LBS
DUNNAGE WEIGHT .....	100 LBS
CONTAINER WEIGHT .....	5,785 LBS
GROSS WEIGHT .....	16,253 LBS



TOFC/COFC, CONTAINERSHIP AND HIGHWAY

REVIEW ACTIVITY:  
NAVY - OS

PREPARING ACTIVITY:  
NAVY - OS  
(PROJECT NO. 8140-N278)

SPECIFICATION ANALYSIS SHEET		Form Approved Budget Bureau No. 22-R255
<p><b>INSTRUCTIONS:</b> This sheet is to be filled out by personnel, either Government or contractor, involved in the use of the specification in procurement of products for ultimate use by the Department of Defense. This sheet is provided for obtaining information on the use of this specification which will insure that suitable products can be procured with a minimum amount of delay and at the least cost. Comments and the return of this form will be appreciated. Fold on lines on reverse side, staple in corner, and send to preparing activity. Comments and suggestions submitted on this form do not constitute or imply authorization to waive any portion of the referenced document(s) or serve to amend contractual requirements.</p>		
SPECIFICATION		
MIL-STD-1386-59 (Navy)		
ORGANIZATION		
CITY AND STATE	CONTRACT NUMBER	
MATERIAL PROCURED UNDER A		
<input type="checkbox"/> DIRECT GOVERNMENT CONTRACT <input type="checkbox"/> SUBCONTRACT		
<p>1. HAS ANY PART OF THE SPECIFICATION CREATED PROBLEMS OR REQUIRED INTERPRETATION IN PROCUREMENT USE?</p> <p>A. GIVE PARAGRAPH NUMBER AND WORDING.</p>		
<p>B. RECOMMENDATIONS FOR CORRECTING THE DEFICIENCIES</p>		
<p>2. COMMENTS ON ANY SPECIFICATION REQUIREMENT CONSIDERED TOO RIGID</p>		
<p>3. IS THE SPECIFICATION RESTRICTIVE?</p> <p><input type="checkbox"/> YES      <input type="checkbox"/> NO (If "yes", in what way?)</p>		
<p>4. REMARKS (Attach any pertinent data which may be of use in improving this specification. If there are additional papers, attach to form and place both in an envelope addressed to preparing activity)</p>		
SUBMITTED BY (Printed or typed name and activity - Optional)		DATE

DD FORM 1426  
1 JAN 66

REPLACES EDITION OF 1 OCT 64 WHICH MAY BE USED.

S/N-0102-014-1801

C-25254

FOLD

---

POSTAGE AND FEES PAID

OFFICIAL BUSINESS

Commanding Officer  
Naval Weapons Station Earle  
Naval Weapons Handling Laboratory (803)  
Colts Neck, New Jersey 07722

---

FOLD