

MILITARY STANDARD

MIL-STD-1386-55

LOADING OF HAZARDOUS MATERIALS AND ASSOCIATED ITEMS IN MILVAN CONTAINERS

(NAVY)

24 FEBRUARY 1975

CARTRIDGE, 76 MM/62 CALIBER OR
CHARGE, CLEARING 76 MM/62 CALIBER

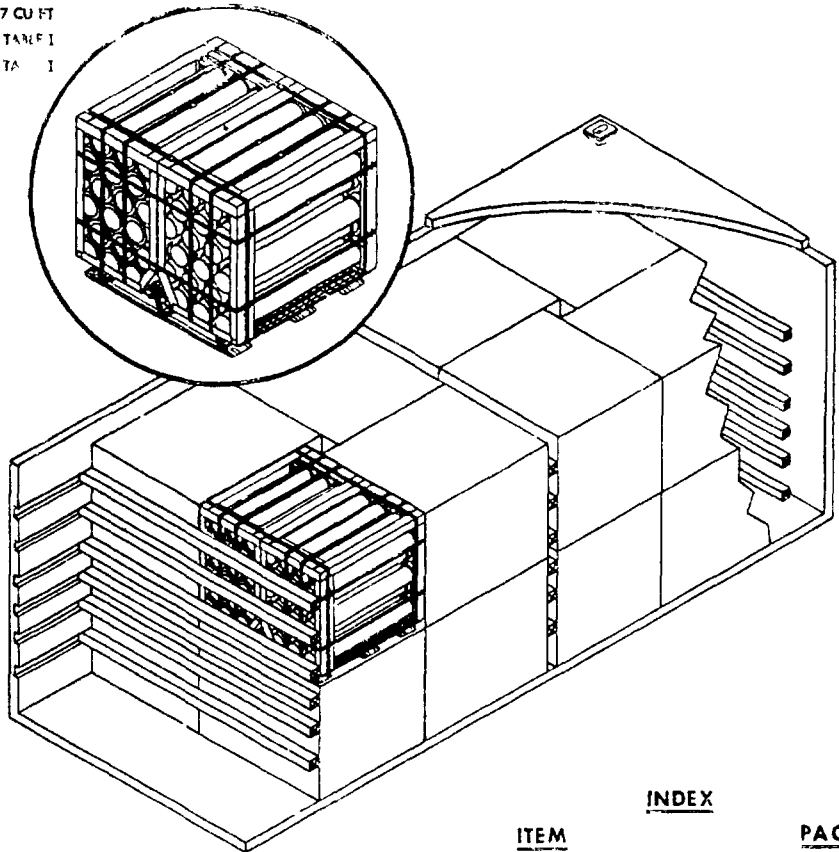
UNIT LOAD DATA

FLEET ISSUE UNIT LOAD

UNIT LOAD DRAWING WR-54/263
WEIGHT OF UNIT LOAD
CARTRIDGE (APPROX) 1511 LBS
CLEARING CHARGE (APPROX) 950 LBS
DIMENSIONS 48 3/4 L x 42 1/8 W x 40 1/8 H
CUBE 44.7 CU FT
DOT HAZARD CLASSIFICATION SEE TABLE I
COAST GUARD CLASS SEE TABLE I

TABLE I

HAZARD	CLASSIFICATION	
	DOT	CG
CARTRIDGE	A	IV
HE-IR	A	IV
HE-PD	A	IV
BL & P	B	II-B
TPSP	B	II-B
CLEARING	B	II-B



INDEX

ITEM	PAGE
GENERAL NOTES	2
TOFC/COFC, SHIP & HIGHWAY	2 & 3

NOTES

- UNLESS OTHERWISE SPECIFIED DIMENSIONS ARE IN INCHES
- FOR CROSS REFERENCE TO ASSOCIATED PALLETIZING, TRUCKLOADING AND CARLOADING MILITARY STANDARDS, REFER TO THE INDEX TO STANDARDS, MIL-HDBK-236 (NAVY)

FSC 8130

AUTHORIZED FOR TRAILER-ON-FLAT-CAR (TOFC), CONTAINER-ON-FLAT-CAR (COFC), CONTAINERSHIP AND HIGHWAY SHIPMENTS

APPROVED BY US COAST GUARD

APPROVED BY BUREAU OF EXPLOSIVES

[Signature]
DATE *1/29/75*

[Signature]
DATE *1/29/75*

[Signature] *1/29/75*
SIGNATURE TECHNICAL DIRECTION AGENT (TD.A) DATE
[Signature] *1/29/75*
SIGNATURE NAVSEASYS COM BY DIRECTION DATE

ORIGINATOR *[Signature]*

NAVAL WEAPONS HANDLING LABORATORY
N A D EARLE, NEW JERSEY

MIL-STD-1386-53 (NAVY)

GENERAL NOTES

- 1 THIS DOCUMENT GIVES DETAILED INSTRUCTIONS FOR LOADING THE MILVAN CONTAINER WITH FLEET ISSUE UNIT LOADS OF 76 MM/62 CALIBER CARTRIDGES OR CLEARING CHARGES THE UNIT LOAD SHALL BE PALLETIZED IN ACCORDANCE WITH WP-54/263
- 2 THE MILVAN SHALL BE EQUIPPED WITH A MECHANICAL LOAD-BRACING SYSTEM THAT MEETS THE REQUIREMENTS OF THE BUREAU OF EXPLOSIVES PAMPHLET 6C
- 3 IN ADDITION TO THE BELT RAILS REQUIRED BY PAMPHLET 6C, THE MILVAN CONTAINER HAS BELT RAILS AT THE 72 AND 83 INCH HEIGHTS FROM THE CONTAINER FLOOR

CAUTION

WHEN POSITIONING CROSSMEMBERS, MAKE A VISUAL CHECK TO ENSURE THAT THE CROSSMEMBERS ARE LOCKED SECURELY IN PLACE

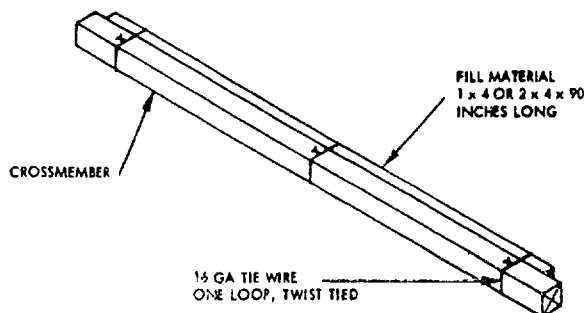
- 4 CONTAINERS ARE EQUIPPED WITH 25 CROSSMEMBERS UNUSED CROSSMEMBERS MUST REMAIN WITH THE CONTAINER AND SHALL BE FASTENED INTO BELT RAILS FOR SHIPMENT
- 5 WHEN THE VOID BETWEEN THE CROSSMEMBER AND THE UNIT LOAD IS GREATER THAN ONE INCH, USE FILL MATERIAL TO SHIM BETWEEN CROSSMEMBER AND UNIT LOAD AS SHOWN IN DETAIL A
- 6 APPLICABLE MATERIAL SPECIFICATIONS
DUNNAGE LUMBER - FED SPEC. MM-L-751
NAILS - FED SPEC. FF-N-105, TYPE II, STYLE 10, COMMON BRIGHT
- 7 AFTER BLOCKING AND BRACING HAS BEEN INSPECTED, ATTACK SHIPPING DOCUMENTS INSIDE THE CONTAINER IN AN ACCESSIBLE AREA, CLOSE AND SEAL CONTAINER DOORS AND ATTACH APPLICABLE PLACARDS TO THE OUTSIDE OF THE CONTAINER FOR THE APPROPRIATE MODE OF TRANSPORTATION AS PRESCRIBED IN OP 2165 (VOL 1)

TOFC/COFC, CONTAINERSHIP AND HIGHWAY

- 1 THE CONTAINER LOAD CONSISTS OF 16 UNIT LOADS WHICH MUST BE LOADED AND DUNNAGED IN ACCORDANCE WITH THIS DOCUMENT
- 2 THE LOADED MILVAN CONTAINER SHALL BE ON A 20 FT MILVAN CHASSIS EQUIPPED WITH DOUBLE BOGIES WHEN BEING MOVED IN TOFC SERVICE
- 3 WHEN THE LOADED CONTAINER IS IN TOFC OR COFC SERVICE, IT SHALL BE ON FLAT RAILCARS THAT COMPLY WITH BUREAU OF EXPLOSIVES PAMPHLET 6C
- 4 THE LOADED MILVAN MAY BE MOVED OVER PUBLIC HIGHWAYS ON A MILVAN CHASSIS EQUIPPED WITH DOUBLE BOGIES OR ON SUITABLE COMMERCIAL EQUIPMENT OF APPROPRIATE CAPACITY

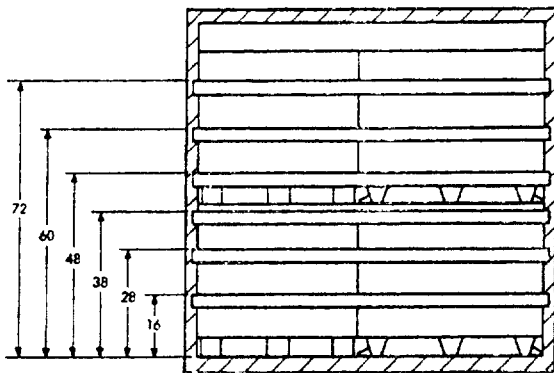
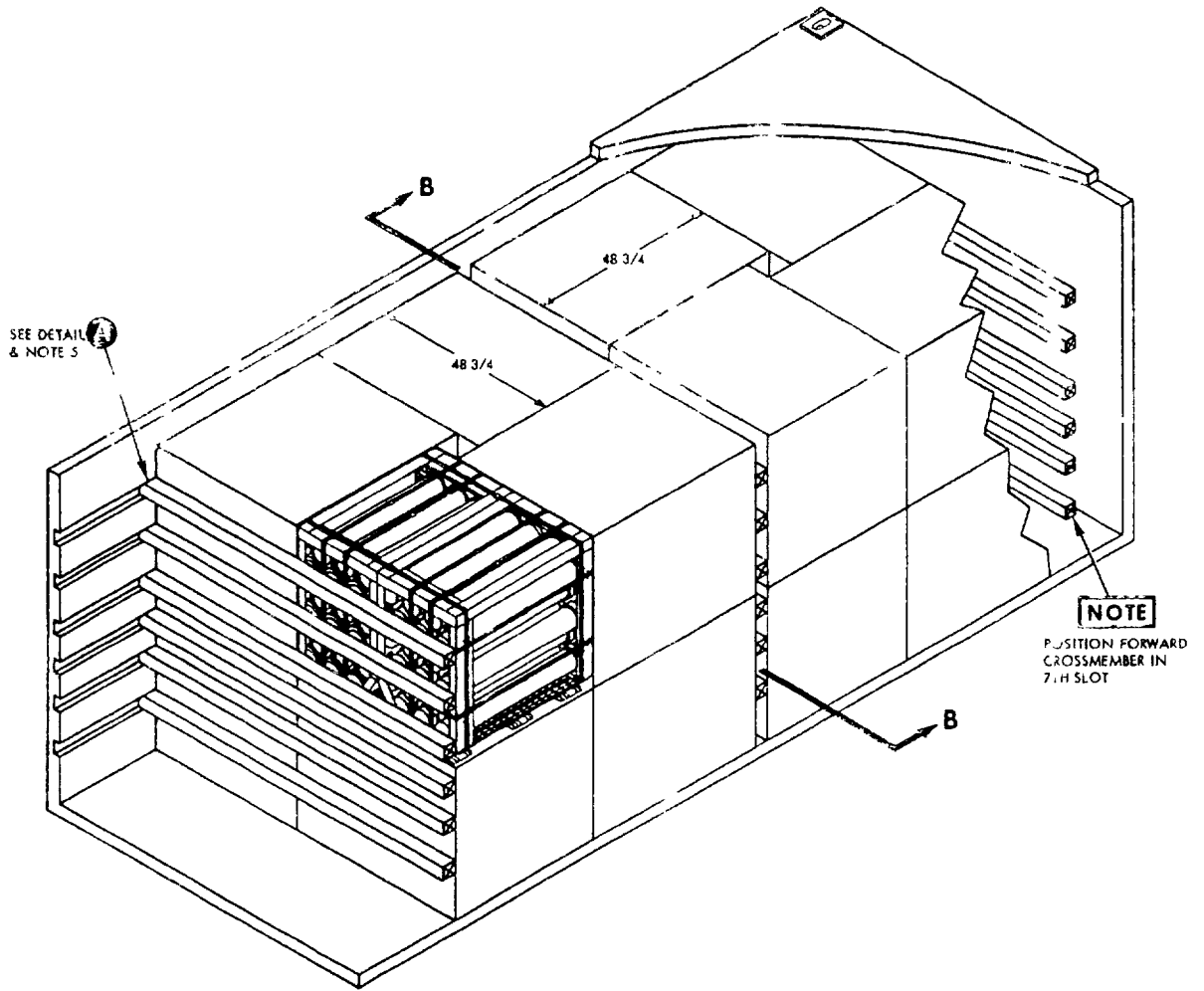
NOTE

IN CERTAIN STATES THE GROSS VEHICLE WEIGHT (G.V.W.) IS LIMITED BY THE DISTANCE BETWEEN THE AXLES OF THE ASSEMBLED RIG. CARE SHOULD BE TAKEN TO SEE THAT THE PROPOSED G.V.W. DOES NOT EXCEED THESE LIMITATIONS



DETAIL **A**
FILL MATERIAL
SEE GENERAL NOTE 5

MIL-STD-1386-3 (NAVY)



SECTION B B

CONTAINER LOAD DATA

NUMBER OF UNIT LOADS	16
NUMBER OF CROSSMEMBERS REQUIRED	18
LOAD WEIGHT (APPROX)	
CARTRIDGE	24 176 LBS
CLEARING CHARGE	15, 200 LBS
CONTAINER WEIGHT	5, 785 LBS
GROSS WEIGHT (APPROX)	
CARTRIDGE	29, 961 LBS
CLEARING CHARGE	5 785 LBS

REVIEW ACTIVITY
NAVY - OS

PREPARING ACTIVITY
NAVY - OS
PROJECT NO 8140-N2/3

SPECIFICATION ANALYSIS SHEET

Form Approved
Budget Bureau No 22-R255

INSTRUCTIONS This sheet is to be filled out by personnel, either Government or contractor, involved in the use of the specification in procurement of products for ultimate use by the Department of Defense. This sheet is provided for obtaining information on the use of this specification which will insure that suitable products can be procured with a minimum amount of delay and at the least cost. Comments and the return of this form will be appreciated. Fold on lines on reverse side, staple in corner, and send to preparing activity. Comments and suggestions submitted on this form do not constitute or imply authorization to waive any portion of the referenced document(s) or serve to amend contractual requirements.

SPECIFICATION

MIL-STD-1386-55 (Navy)

ORGANIZATION

CITY AND STATE

CONTRACT NUMBER

MATERIAL PROCURED UNDER A

 DIRECT GOVERNMENT CONTRACT SUBCONTRACT

1 HAS ANY PART OF THE SPECIFICATION CREATED PROBLEMS OR REQUIRED INTERPRETATION IN PROCUREMENT USE?

A GIVE PARAGRAPH NUMBER AND WORDING

B RECOMMENDATIONS FOR CORRECTING THE DEFICIENCIES

2 COMMENTS ON ANY SPECIFICATION REQUIREMENT CONSIDERED TOO RIGID

3 IS THE SPECIFICATION RESTRICTIVE?

YES NO (If "yes", in what way?)

4 REMARKS (Attach any pertinent data which may be of use in improving this specification. If there are additional papers, attach to form and place both in an envelope addressed to preparing activity)

SUBMITTED BY (Printed or typed name and activity - Optional)

DATE

DD FORM 1426
1 JAN 63

REPLACES EDITION OF 1 OCT 64 WHICH MAY BE USED

S/N-0102-014-1801

C-25254

F01

POSTAGE AND FEES PAID

OFFICIAL BUSINESS

Commanding Officer
Naval Weapons Station Earle (NWEHR. Harris)
Colts Neck, New Jersey 07722

FOLD