

**MILITARY STANDARD
LOADING OF HAZARDOUS
MATERIALS AND ASSOCIATED ITEMS
IN MILVAN CONTAINERS**

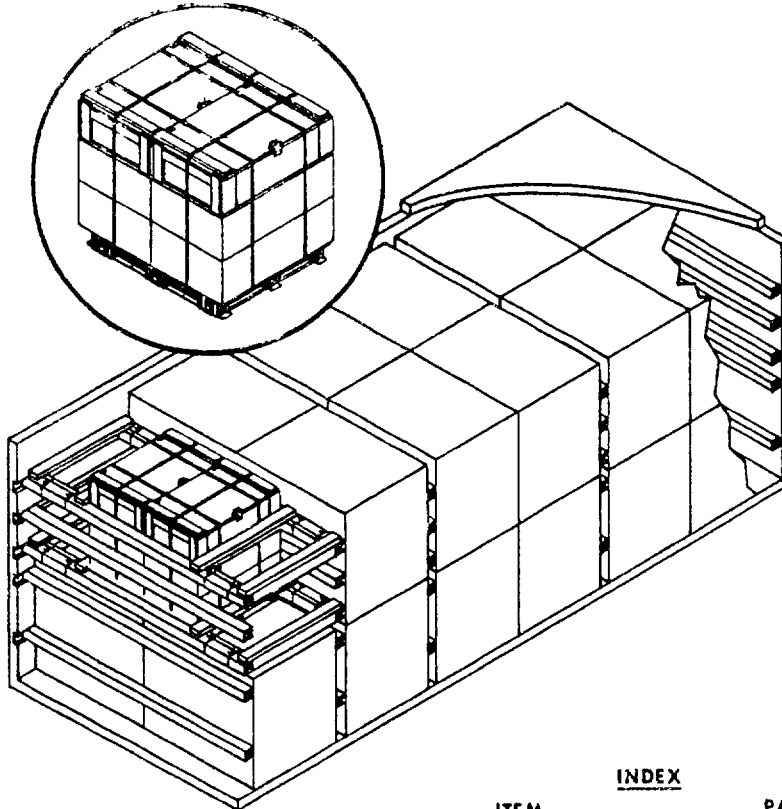
**MIL-STD-1386-53
(NAVY)**

2 DECEMBER 1974

**FIN, TAIL, UNDERWATER MINE, MK 18 TYPE
FLEET ISSUE UNIT LOAD**

UNIT LOAD DATA

UNIT LOAD DRAWING WR-54/233
DIMENSIONS 45 1/2 L x 35 W x 41 1/8 H
WEIGHT (APPROX) 530 LBS
CUBE 37.8 CU FT
DOT HAZARD CLASSIFICATION INERT
DANG GUARD CLASS NONE



NOTES

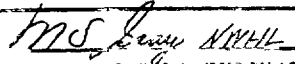
- 1 UNLESS OTHERWISE SPECIFIED DIMENSIONS ARE IN INCHES
- 2 FOR CROSS REFERENCE TO ASSOCIATED PALLETIZING, TRUCKLOADING AND CARLOADING MILITARY STANDARDS, REFER TO THE INDEX TO STANDARDS, MIL-HDBK-236 (NAVY)

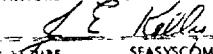
INDEX

ITEM	PAGE
GENERAL NOTES	2
TOFC/COFC, CONTAINER-SHIP AND HIGHWAY	2 & 3

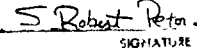
FSC 8140

AUTHORIZED FOR TRAILER-ON-FLAT-CAR (TOFC), CONTAINER-ON-FLAT-CAR (COFC), CONTAINERSHIP AND HIGHWAY SHIPMENTS



 SIGNATURE _____ DATE 1/25/74
 TECHNICAL DIRECTOR AGENT (TO 1)


 SIGNATURE _____ DATE 1/25/74
 SEASYS COM BY DIRECTION

ORIGINATOR 

 SIGNATURE

**NAVAL WEAPONS HANDLING LABORATORY
N A D EARLE, NEW JERSEY**

PAGE 1 OF 3

MIL-STD 1386-53 (NAVY)

GENERAL NOTES

- 1 THIS DOCUMENT GIVES DETAILED INSTRUCTIONS FOR LOADING THE MILVAN CONTAINER WITH UNDERWATER MINE TAIL FINS MK 18 TYPE 1. THE FINS SHALL BE PALLETIZED IN ACCORDANCE WITH WR-54/233
- 2 THE MILVAN SHALL BE EQUIPPED WITH A MECHANICAL LOAD BRACING SYSTEM THAT MEETS THE REQUIREMENTS OF THE BUREAU OF EXPLOSIVES PAMPHLET 6C
- 3 IN ADDITION TO THE BELT RAILS REQUIRED BY PAMPHLET 6C, THE MILVAN CONTAINER HAS BELT RAILS AT THE 72 AND 83 INCH HEIGHTS FROM THE CONTAINER FLOOR

CAUTION

WHEN POSITIONING CROSSMEMBERS MAKE A VISUAL CHECK TO ENSURE THAT THE CROSSMEMBERS ARE LOCKED SECURELY IN PLACE

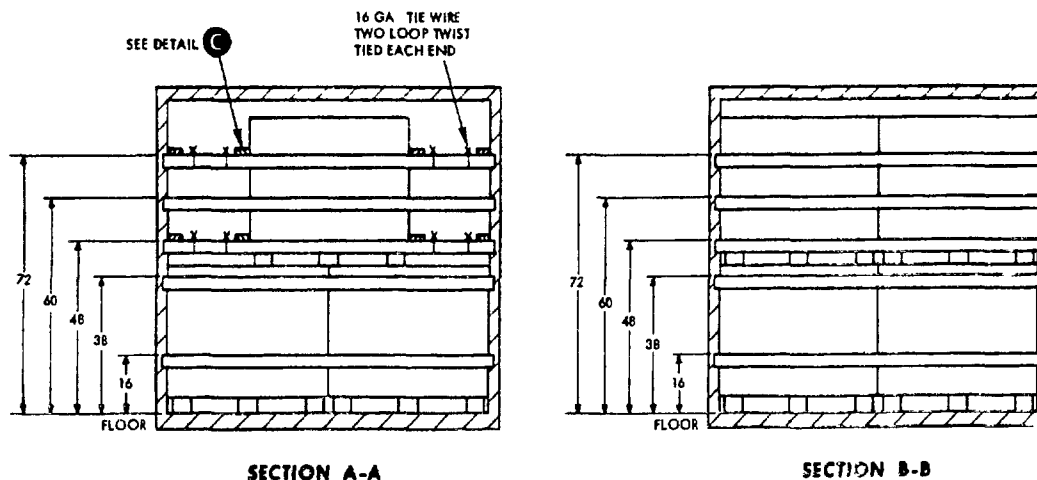
- 4 CONTAINERS ARE EQUIPPED WITH 25 CROSSMEMBERS. UNUSED CROSSMEMBERS MUST REMAIN WITH CONTAINER AND SHALL BE FASTENED INTO BELT RAILS FOR SHIPMENT
- 5 WHEN THE LONGITUDINAL SLACK BETWEEN A CROSSMEMBER AND THE UNIT LOAD IS GREATER THAN ONE INCH USE FILL MATERIAL TO SHIM BETWEEN CROSSMEMBER AND UNIT LOAD AS SHOWN IN DETAIL D
- 6 LENGTH OF STRUT, PIECE 1 SHALL BE SUFFICIENT TO CAUSE DETAIL C TO FILL THE VOID BETWEEN THE UNIT LOAD AND THE CONTAINER SIDE WALL. ONE INCH SPACE IS PERMITTED. TWIST TIE BOTH ENDS OF THE ASSEMBLY TO THE CROSSMEMBER WITH 16 GAUGE SOFT ANNEALED WIRE
- 7 APPLICABLE MATERIAL SPECIFICATIONS
DUNNAGE LUMBER - FED SPEC, MM-L-751
NAILS - FED SPEC, FF-N-105, TYPE II, STYLE 10, COMMON BRIGHT.
- 8 AFTER BLOCKING AND BRACING HAS BEEN INSPECTED, ATTACH SHIPPING DOCUMENTS INSIDE THE CONTAINER IN AN ACCESSIBLE AREA AND CLOSE AND SEAL CONTAINER DOORS

TOFC/COFC, CONTAINERSHIP AND HIGHWAY

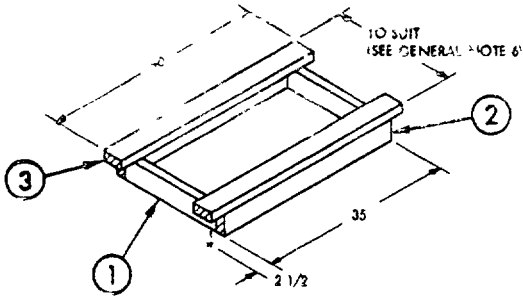
- 1 THE CONTAINER LOAD CONSISTS OF 20 UNIT LOADS WHICH MUST BE LOADED AND DUNNAGED IN ACCORDANCE WITH THIS DOCUMENT
- 2 THE LOADED CONTAINER MAY BE TRANSPORTED OVER PUBLIC HIGHWAYS ON THE MILVAN CHASSIS USING THE FOLLOWING CONFIGURATIONS
 - A ONE CONTAINER ON 20-FT MILVAN CHASSIS WITH A DOUBLE BOGIE AND PULLED BY A DOUBLE DRIVE AXLE TRACTOR
 - B TWO CONTAINERS ON A 40-FT MILVAN CHASSIS WITH A DOUBLE BOGIE AND PULLED BY A DOUBLE DRIVE AXLE TRACTOR
- 3 THE LOADED CONTAINER MAY BE TRANSPORTED OVER PUBLIC HIGHWAYS USING SUITABLE COMMERCIAL EQUIPMENT OF ADEQUATE CAPACITY AND PULLED BY A DOUBLE DRIVE AXLE TRACTOR. CONTAINERS MUST BE ADEQUATELY SECURED TO THE EQUIPMENT
- 4 THE LOADED CONTAINERS MAY BE SHIPPED TOFC/COFC. WHEN SHIPPING TOFC THE FOLLOWING CONFIGURATIONS ARE AUTHORIZED
 - A ONE CONTAINER ON 20-FT MILVAN CHASSIS EQUIPPED WITH DOUBLE BOGIES
 - B TWO CONTAINERS ON 40-FT MILVAN CHASSIS EQUIPPED WITH DOUBLE BOGIES

WARNING

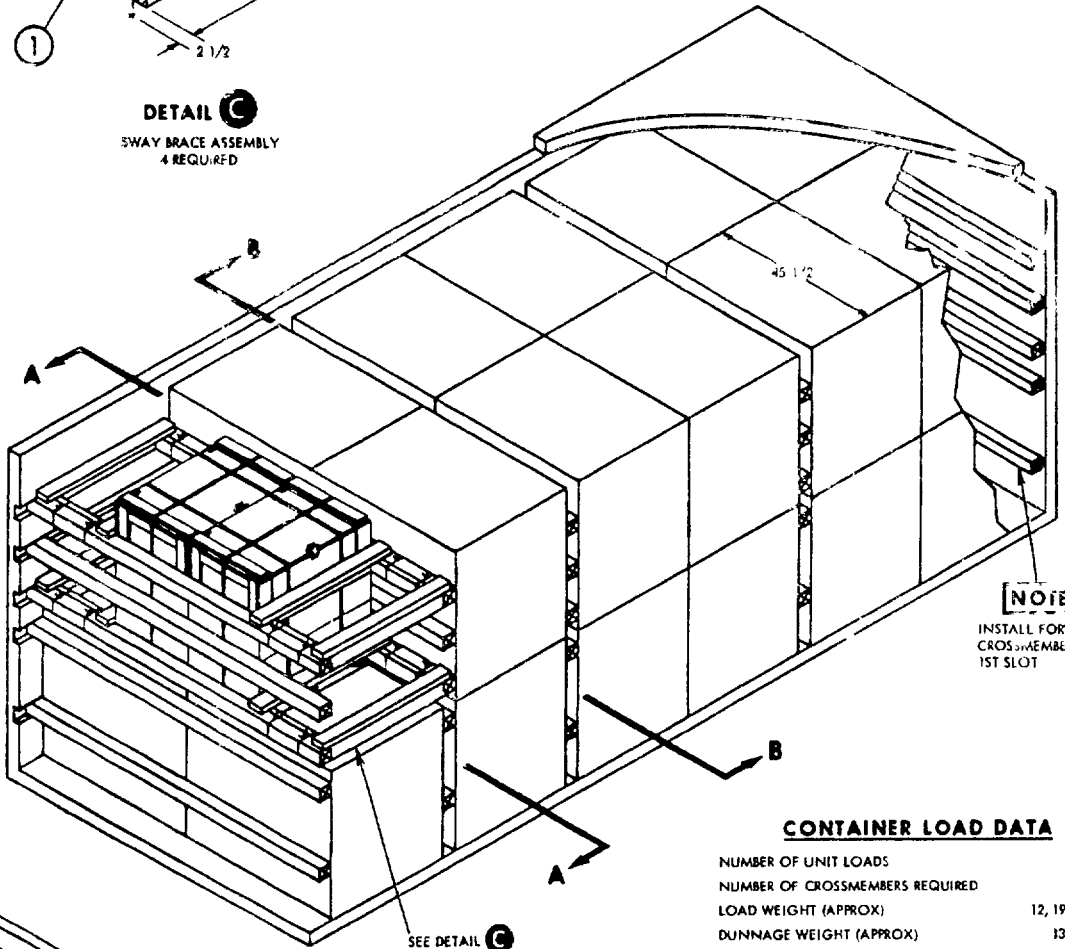
CHASSIS/CONTAINERS COUPLED INTO A 40-FT TRAILER CONFIGURATION MUST BE PLACED AT THE B-END OF THE TOFC RAILCAR. THE REAR END OF THE 40-FT UNIT WILL OVERHANG THE END OF THE CAR IF IT IS PLACED AT THE A-END. 20-FT AND 40-FT UNITS CAN BE LOADED ON THE SAME CAR



MIL STD 1386 53 ()



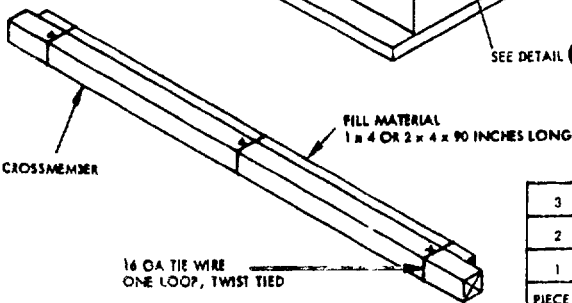
DETAIL C
SWAY BRACE ASSEMBLY
4 REQUIRED



NOTE
INSTALL FORWARD
CROSSMEMBER IN
1ST SLOT

CONTAINER LOAD DATA

NUMBER OF UNIT LOADS	23
NUMBER OF CROSSMEMBERS REQUIRED	25
LOAD WEIGHT (APPROX)	12,190 LBS
DUNNAGE WEIGHT (APPROX)	135 LBS
CONTAINER WEIGHT	5,785 LBS
GROSS WEIGHT (APPROX)	18,110 LBS



DETAIL D
FILL MATERIAL

PIECE NO	DESCRIPTION	SIZE	NO PCS REQD	NAIL TO	NUMBER NAILS	SIZE NAILS
3	SUPPORT	2 x 4 x 40	B	2	8	10d
2	LONGITUDINAL	2 x 4 x 35	B	1	2 PER JOINT	16d
1	STRUT	2 x 4 TO SUIT	B	SEE 2	-	-

LIST OF MATERIALS AND NAILING DATA

TOFC/COFC, CONTAINERSHIP AND HIGHWAY

REVIEW ACTIVITY
NAVY - O.

PREPARING ACTIVITY
NAVY (S)
(PROJECT NO. N8140-265)

SPECIFICATION ANALYSIS SHEET		Form Approved Budget Bureau No 22-R255
<p>INSTRUCTIONS This sheet is to be filled out by personnel, either Government or contractor, involved in the use of the specification in procurement of products for ultimate use by the Department of Defense. This sheet is provided for obtaining information on the use of this specification which will insure that suitable products can be procured with a minimum amount of delay and at the least cost. Comments and the return of this form will be appreciated. Fold on lines on reverse side, staple in corner, and send to preparing activity. Comments and suggestions submitted on this form do not constitute or imply authorization to waive any portion of the referenced document(s) or serve to amend contractual requirements.</p>		
<p>SPECIFICATION MIL-STD-1386-53 (NAVY)</p>		
<p>ORGANIZATION</p>		
<p>CITY AND STATE</p>		<p>CONTRACT NUMBER</p>
<p>MATERIAL PROCURED UNDER A <input type="checkbox"/> DIRECT GOVERNMENT CONTRACT <input type="checkbox"/> SUBCONTRACT</p>		
<p>1 HAS ANY PART OF THE SPECIFICATION CREATED PROBLEMS OR REQUIRED INTERPRETATION IN PROCUREMENT USE? A GIVE PARAGRAPH NUMBER AND WORDING</p>		
<p>B RECOMMENDATIONS FOR CORRECTING THE DEFICIENCIES</p>		
<p>2 COMMENTS ON ANY SPECIFICATION REQUIREMENT CONSIDERED TOO RIGID</p>		
<p>3 IS THE SPECIFICATION RESTRICTIVE? <input type="checkbox"/> YES <input type="checkbox"/> NO (If "yes", in what way?)</p>		
<p>4 REMARKS (Attach any pertinent data which may be of use in improving this specification. If there are additional papers, attach to form and place both in an envelope addressed to preparing activity.)</p>		
<p>SUBMITTED BY (Printed or typed name and activity - Optional)</p>		<p>DATE</p>

DD FORM 1426
1 JAN 56

REPLACES EDITION OF 1 OCT 64 WHICH MAY BE USED

S/N-0102-014-1801 C-25254

FOLD

POSTAGE AND FEE

OFFICIAL BUSINESS

Commanding Officer
Naval Weapons Station Earle
Colts Neck, New Jersey 07722

NWHL-803

FOLD