

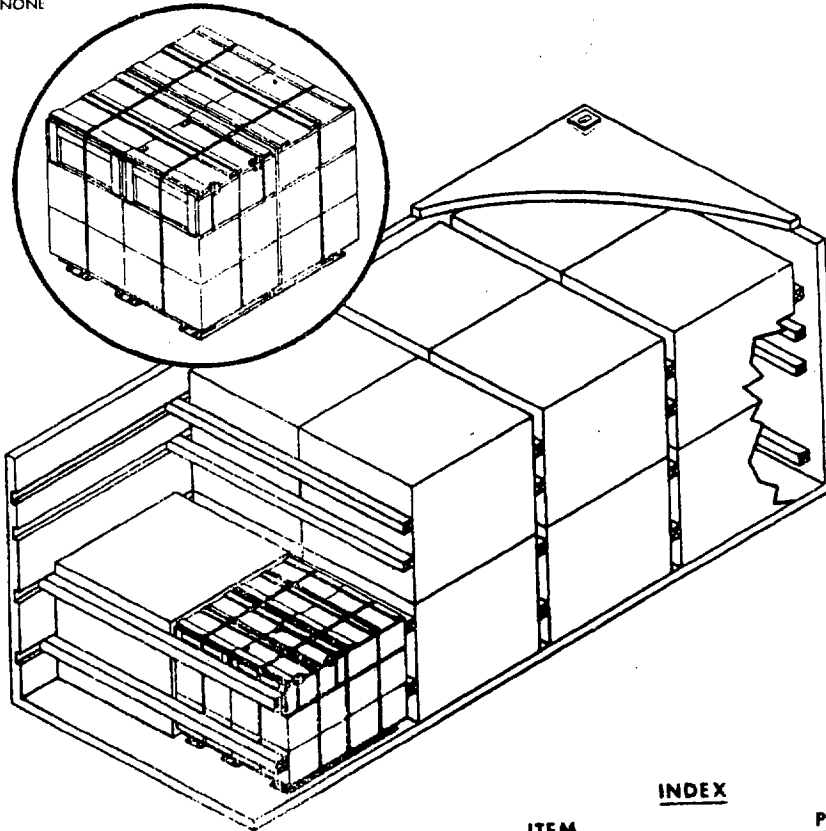
MILITARY STANDARD
LOADING OF HAZARDOUS
MATERIALS AND ASSOCIATED ITEMS
IN MILVAN CONTAINERS
PACK ASSEMBLY, PARACHUTE, UNDERWATER MINE; MK 35 TYPE
FLEET ISSUE UNIT LOAD

MIL-STD-1386-50
(NAVY)

24 FEBRUARY 1975

UNIT LOAD DATA

UNIT LOAD DRAWING WR-54/228
 DIMENSIONS 48 1/4 L x 45 1/4 W x 42 1/4 H
 WEIGHT (APPROX) 1040 LBS
 CUBE 53.4 CU FT
 DOT HAZARD CLASSIFICATION INERT
 COAST GUARD CLASS NONE



NOTES:

1. UNLESS OTHERWISE SPECIFIED DIMENSIONS ARE IN INCHES.
2. FOR CROSS REFERENCE TO ASSOCIATED PALLETIZING, TRUCKLOADING AND CARLOADING MILITARY STANDARDS, REFER TO THE INDEX TO STANDARDS, MIL-HDBK-226 (NAVY).

ITEM	INDEX	PAGE
GENERAL NOTES		2
TOFC/COFC CONTAINERSHIP AND HIGHWAY		2 & 3

FBC 0140

AUTHORIZED FOR TRAILER-ON-FLAT-CAR (TOFC), CONTAINER-ON-FLAT-CAR (COFC), CONTAINERSHIP AND HIGHWAY SHIPMENTS

SIGNATURE M.S. Long DATE 1/16/75
 TECHNICAL DIRECTION AGENT (TDA)
 SIGNATURE E. Kelly DATE 1/16/75
 NAVSEAS/SCOM BY DIRECTION

ORIGINATOR S. Robert Patten
 SIGNATURE
 NAVAL WEAPONS HANDLING LABORATORY
 N A D EARLE, NEW JERSEY

MIL-STD-1386-50 (NAVY)**GENERAL NOTES**

1. THIS DOCUMENT GIVES DETAILED INSTRUCTIONS FOR LOADING THE MILVAN CONTAINER WITH FLEET UNIT LOADS OF UNDERWATER MINE PARACHUTE PACK ASSEMBLIES MK 23 TYPE. THE UNIT LOAD SHALL BE IN ACCORDANCE WITH WR-54/228.
2. THE MILVAN SHALL BE EQUIPPED WITH A MECHANICAL LOAD BRACING SYSTEM THAT MEETS THE REQUIREMENTS OF THE BUREAU OF EXPLOSIVES PAMPHLET 60.
3. IN ADDITION TO THE BELT RAILS REQUIRED BY PAMPHLET 60, THE MILVAN CONTAINER HAS BELT RAILS AT THE 72 AND 83 INCH HEIGHTS FROM THE CONTAINER FLOOR.

CAUTION

WHEN POSITIONING CROSSMEMBERS MAKE A VISUAL CHECK TO ENSURE THAT THE CROSSMEMBERS ARE LOCKED SECURELY IN PLACE.

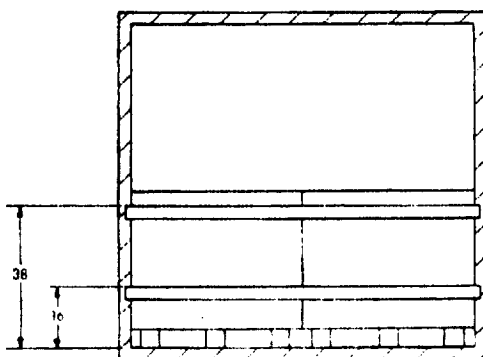
4. CONTAINERS ARE EQUIPPED WITH 20 CROSSMEMBERS. UNUSED CROSSMEMBERS MUST REMAIN WITH CONTAINER AND SHALL BE FASTENED INTO BELT RAILS FOR SHIPMENT.
5. WHEN THE LONGITUDINAL SLACK BETWEEN A CROSSMEMBER AND THE UNIT LOAD IS GREATER THAN 1 INCH, USE FILL MATERIAL TO SHIM BETWEEN CROSSMEMBER AND UNIT LOAD AS SHOWN IN DETAIL C.
6. APPLICABLE MATERIAL SPECIFICATIONS:
DUNNAGE LUMBER - FED SPEC MMH-751.
7. AFTER BLOCKING AND BRACING HAS BEEN INSPECTED ATTACH SHIPPING DOCUMENTS INSIDE THE CONTAINER IN AN ACCESSIBLE AREA AND CLOSE AND SEAL CONTAINER DOORS.

TOFC/COFC, CONTAINERSHIP AND HIGHWAY

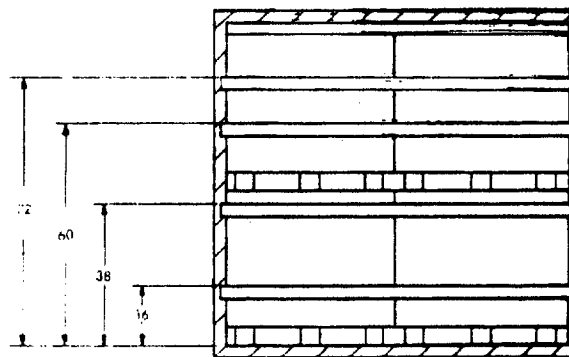
1. THE CONTAINER CONSISTS OF 14 UNIT LOADS WHICH MUST BE LOADED AND DUNNAGED IN ACCORDANCE WITH THIS DOCUMENT.
2. THE LOADED CONTAINER MAY BE TRANSPORTED OVER PUBLIC HIGHWAYS ON THE MILVAN CHASSIS USING THE FOLLOWING CONFIGURATIONS:
 - A. ONE CONTAINER ON 20-FT MILVAN CHASSIS WITH A DOUBLE BOGIE AND PULLED BY A DOUBLE DRIVE AXLE TRACTOR.
 - B. TWO CONTAINERS ON A 40-FT MILVAN CHASSIS WITH A DOUBLE BOGIE AND PULLED BY A DOUBLE DRIVE AXLE TRACTOR.
3. THE LOADED CONTAINER MAY BE TRANSPORTED OVER PUBLIC HIGHWAYS USING SUITABLE COMMERCIAL EQUIPMENT OF ADEQUATE CAPACITY AND PULLED BY A DOUBLE DRIVE AXLE TRACTOR. CONTAINERS MUST BE ADEQUATELY SECURED TO THE EQUIPMENT.
4. THE LOADED CONTAINERS MAY BE SHIPPED TOFC/COFC. WHEN SHIPPING TOFC THE FOLLOWING CONFIGURATIONS ARE AUTHORIZED:
 - A. ONE CONTAINER ON 20-FT MILVAN CHASSIS EQUIPPED WITH DOUBLE BOGIES.
 - B. TWO CONTAINERS ON A 40-FT MILVAN CHASSIS EQUIPPED WITH DOUBLE BOGIES.

WARNING

CHASSIS CONTAINERS COUPLED INTO A 40-FT TRAILER CONFIGURATION MUST BE PLACED AT THE B-END OF THE TOFC RAILCAR. THE REAR END OF THE 40-FT UNIT WILL OVERHANG THE END OF THE CAR IF IT IS PLACED AT THE A-END. 20-FT AND 40-FT UNITS CAN BE LOADED ON THE SAME CAR.

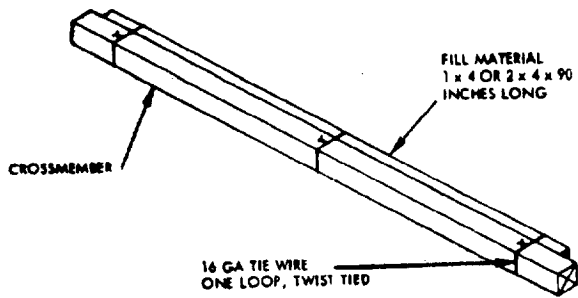


SECTION A-A

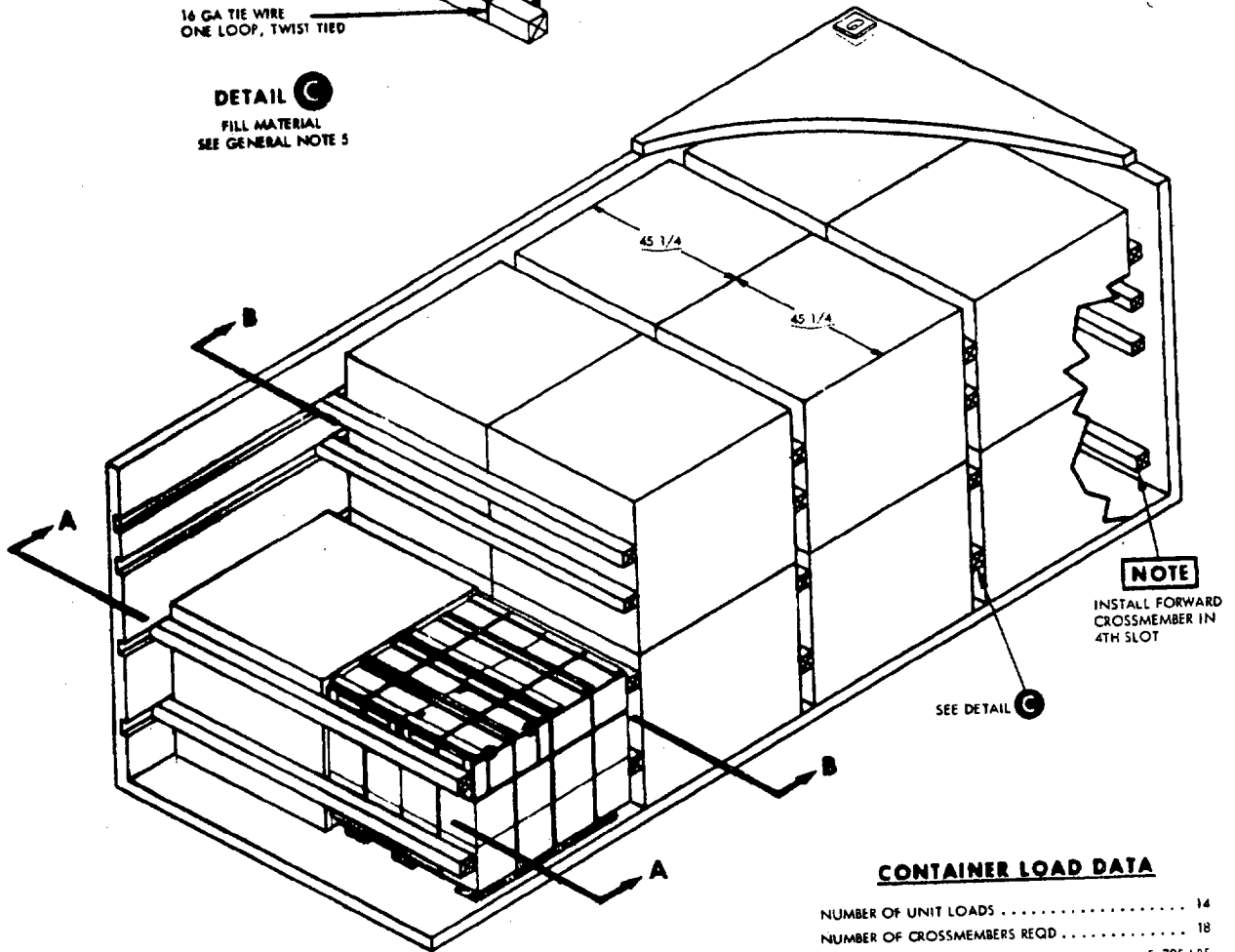


SECTION B-B

MIL-STD-1386-50 (NAVY)



DETAIL C
FILL MATERIAL
SEE GENERAL NOTE 5



CONTAINER LOAD DATA

NUMBER OF UNIT LOADS	14
NUMBER OF CROSSMEMBERS REQD	18
CONTAINER WEIGHT	5,785 LBS
LOAD WEIGHT (APPROX)	14,560 LBS
CONTAINER GROSS WEIGHT (APPROX)	20,345 LBS

TOFC/COFC, CONTAINERSHIP AND HIGHWAY

REVIEW ACTIVITY:
NAVY - OS

PREPARING ACTIVITY:
NAVY - OS
(PROJECT NO. B140-N261)

SPECIFICATION ANALYSIS SHEET		Form Approved Budget Bureau No. 22-R255
<p>INSTRUCTIONS: This sheet is to be filled out by personnel, either Government or contractor, involved in the use of the specification in procurement of products for ultimate use by the Department of Defense. This sheet is provided for obtaining information on the use of this specification which will insure that suitable products can be procured with a minimum amount of delay and at the least cost. Comments and the return of this form will be appreciated. Fold on lines on reverse side, staple in corner, and send to preparing activity. Comments and suggestions submitted on this form do not constitute or imply authorization to waive any portion of the referenced document(s) or serve to amend contractual requirements.</p>		
SPECIFICATION		
MIL-STD-1386-50 (Navy)		
ORGANIZATION		
CITY AND STATE		CONTRACT NUMBER
MATERIAL PROCURED UNDER 'A'		
<input type="checkbox"/> DIRECT GOVERNMENT CONTRACT <input type="checkbox"/> SUBCONTRACT		
<p>1. HAS ANY PART OF THE SPECIFICATION CREATED PROBLEMS OR REQUIRED INTERPRETATION IN PROCUREMENT USE?</p> <p>A. GIVE PARAGRAPH NUMBER AND WORDING.</p>		
<p>B. RECOMMENDATIONS FOR CORRECTING THE DEFICIENCIES</p>		
<p>2. COMMENTS ON ANY SPECIFICATION REQUIREMENT CONSIDERED TOO RIGID</p>		
<p>3. IS THE SPECIFICATION RESTRICTIVE?</p> <p><input type="checkbox"/> YES <input type="checkbox"/> NO (If "yes", in what way?)</p>		
<p>4. REMARKS (Attach any pertinent data which may be of use in improving this specification. If there are additional papers, attach to form and place both in an envelope addressed to preparing activity)</p>		
SUBMITTED BY (Printed or typed name and activity - Optional)		DATE

DD FORM 1426
1 JAN 66

REPLACES EDITION OF 1 OCT 64 WHICH MAY BE USED.

S/N-0102-014-1801

C-25254

OLD

POSTAGE AND FEES PAID

OFFICIAL BUSINESS

Commanding Officer
Naval Weapons Station Earle (Code 803) R. Harris
Colts Neck, New Jersey 07722
Naval Weapons Handling Laboratory

OLD