

MILITARY STANDARD
LOADING OF HAZARDOUS
MATERIALS AND ASSOCIATED ITEMS
IN MILVAN CONTAINERS
FIRE BOMB, MK77 MODS 2&4
(EMPTY)
FLEET ISSUE UNIT LOAD

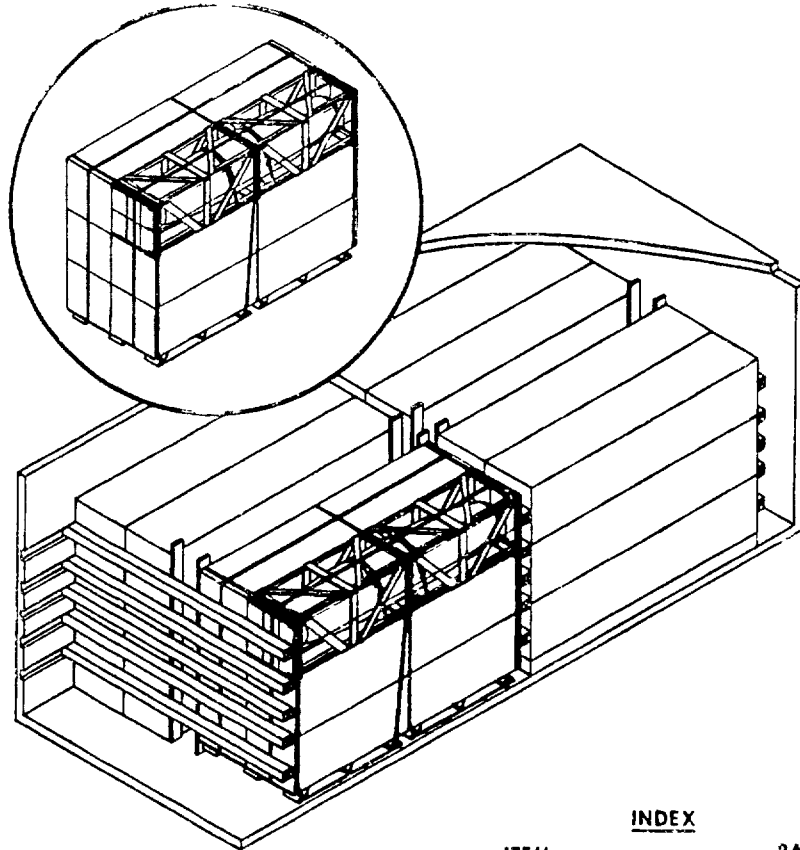
MIL-S10-1386-42

(NAVY)

23 SEPTEMBER 1974

UNIT LOAD DATA

UNIT LOAD DRAWING	WR-54/162
DIMENSIONS	96 L x 40 W x 68 1/8 H
CUBE	151.3 CU FT
LOAD WEIGHT (APPROX)	740 LBS

**NOTES**

- 1 UNLESS OTHERWISE SPECIFIED DIMENSIONS ARE IN INCHES
- 2 FOR CROSS REFERENCE TO ASSOCIATED PALLETIZING, TRUCK-LOADING AND CARLOADING MILITARY STANDARDS, REFER TO THE INDEX TO STANDARDS, MIL-HDBK-236 (NAVY)

INDEX**ITEM****PAGE**

GENERAL NOTES	2
COFC, TOFC CONTAINERSHIP AND HIGHWAY	3

PSC 9140

**AUTHORIZED FOR TRAILER-ON-
 FLAT-CAR (TOFC), CONTAINER-ON-
 FLAT-CAR (COFC), CONTAINERSHIP
 AND HIGHWAY SHIPMENTS**

SIGNATURE	TECHNICAL DIRECTION AGENT (DA)	DATE
<i>MS Gray NWHL</i>		9/12/74
SIGNATURE	ASYSKOM, BY DIRECTION	DATE
<i>A E Kelly</i>		9/12/74

ORIGINATOR

NAVAL WEAPONS HANDLING LABORATORY

N A D EARLE, NEW JERSEY

1 OF 3

MIL-STD-1386-49 (NAVY)**GENERAL NOTES**

- 1 THIS DOCUMENT GIVES DETAILED INSTRUCTIONS FOR LOADING THE MILVAN CONTAINER WITH M77 MODS 2 AND 4 FIRE BOMBS, (EMPTY). THE FIRE BOMBS SHALL BE PALLETIZED IN ACCORDANCE WITH WR-54/162
- 2 THE MILVAN SHALL BE EQUIPPED WITH A MECHANICAL LOAD-BRACING SYSTEM THAT MEETS THE REQUIREMENTS OF THE BUREAU OF EXPLOSIVES PAMPHLET 6C
- 3 IN ADDITION TO THE BELT RAILS REQUIRED BY PAMPHLET 6C, THE MILVAN CONTAINER HAS BELT RAILS AT THE 72 AND 80 INCH HEIGHTS FROM THE CONTAINER FLOOR
- 4 CONTAINERS ARE EQUIPPED WITH 25 CROSSMEMBERS. UNUSED CROSSMEMBERS MUST REMAIN WITH THE CONTAINER AND SHALL BE FASTENED INTO BELT RAILS FOR SHIPMENT.

CAUTION

WHEN POSITIONING CROSSMEMBERS MAKE A VISUAL CHECK TO ENSURE THAT CROSSMEMBERS ARE LOCKED SECURELY IN PLACE

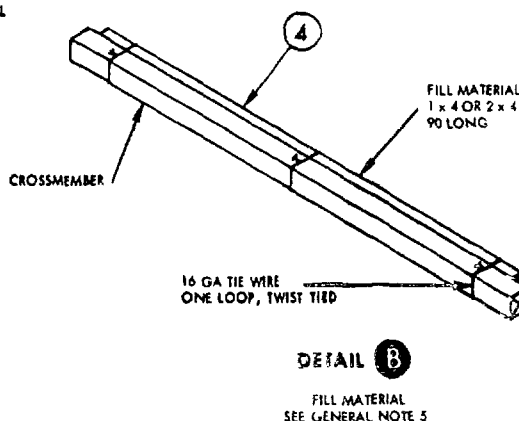
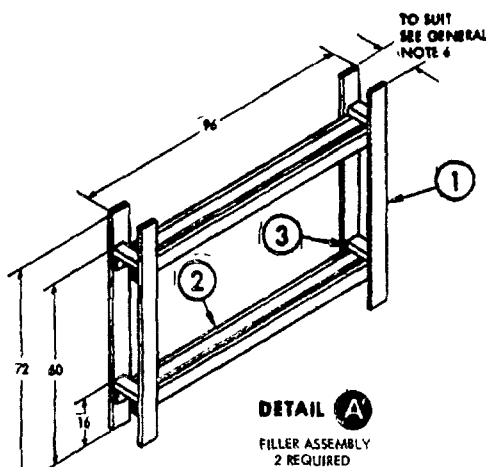
- 5 WHEN THE LONGITUDINAL SLACK BETWEEN A CROSSMEMBER AND THE UNIT LOAD IS GREATER THAN ONE INCH, INSTALL SHIM, PIECE 9, TO THE CROSSMEMBER TO FILL THE VOID. TWIST TIE WITH THREE PIECES OF 16 GAUGE SOFT ANNEALED WIRE, AS SHOWN IN DETAIL B. THIS SHIM STRIP MAY BE ADDED OR OMITTED AS REQUIRED.
- 6 WIDTH OF FILLER ASSEMBLY DETAIL A SHALL BE SUFFICIENT TO FILL THE VOID BETWEEN THE UNIT LOADS. ONE INCH CUMULATIVE SLACK IS PERMITTED.
- 7 APPLICABLE MATERIAL SPECIFICATIONS: DUNNAGE LUMBER, FED SPEC MM-L-751; NAILS, FED SPEC FF-N-105, TYPE II, STYLE 10, COMMON BRIGHT.
- 8 AFTER BLOCKING AND BRACING HAS BEEN INSPECTED, ATTACH SHIPPING DOCUMENTS INSIDE THE CONTAINER IN AN ACCESSIBLE AREA AND CLOSE AND SEAL CONTAINER DOORS.

TOFC/COFC, CONTAINERSHIP AND HIGHWAY

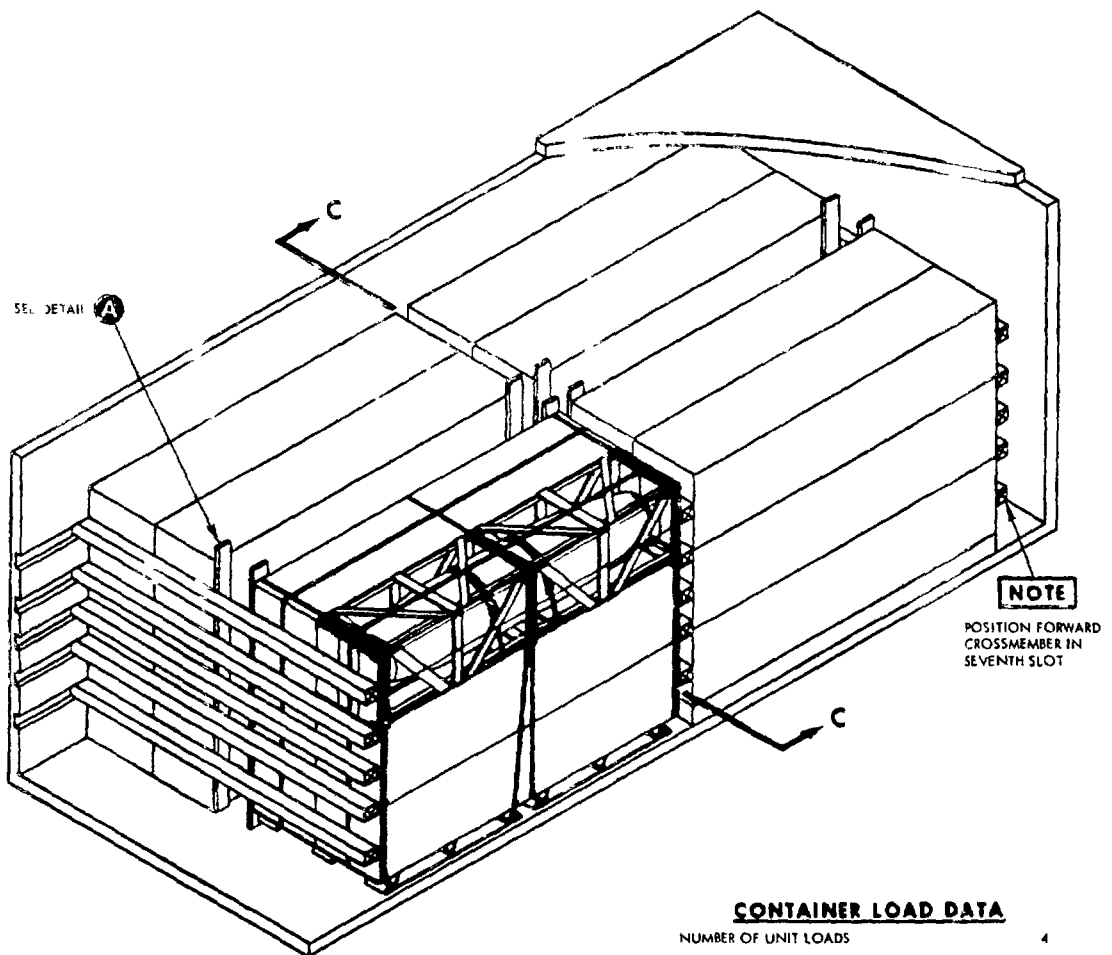
- 1 THE CONTAINER LOAD CONSISTS OF 4 UNIT LOADS WHICH MUST BE LOADED AND DUNNAGED IN ACCORDANCE WITH THIS DOCUMENT.
- 2 THE LOADED MILVAN CONTAINER SHALL BE ON A MILVAN CHASSIS EQUIPPED WITH DOUBLE BOGIES WHEN BEING MOVED IN TOFC SERVICE.
- 3 THE LOADED CONTAINER MAY BE TRANSPORTED OVER PUBLIC HIGHWAYS ON THE MILVAN CHASSIS USING THE FOLLOWING CONFIGURATIONS:
 - A ONE CONTAINER ON 20-FT MILVAN CHASSIS WITH A DOUBLE BOGIE AND PULLED BY A DOUBLE DRIVE AXLE TRACTOR
 - B TWO CONTAINERS ON A 40-FT MILVAN CHASSIS WITH A DOUBLE BOGIE AND PULLED BY A DOUBLE DRIVE AXLE TRACTOR
- 4 THE LOADED CONTAINER MAY BE TRANSPORTED OVER PUBLIC HIGHWAYS USING SUITABLE COMMERCIAL EQUIPMENT OF ADEQUATE CAPACITY AND PULLED BY A DOUBLE DRIVE AXLE TRACTOR.
- 5 THE LOADED CONTAINERS MAY BE SHIPPED TOFC/COFC WHEN SHIPPING TOFC THE FOLLOWING CONFIGURATIONS ARE AUTHORIZED:
 - A ONE CONTAINER ON A 20 FT MILVAN CHASSIS EQUIPPED WITH DOUBLE BOGIES
 - B TWO CONTAINERS ON A 40 FT MILVAN CHASSIS EQUIPPED WITH DOUBLE BOGIES

WARNING

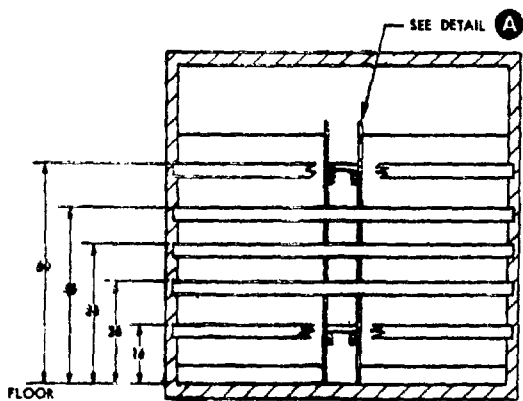
CHASSIS/CONTAINERS COUPLED INTO A 40-FT TRAILER CONFIGURATION MUST BE PLACED AT THE B-END OF THE TOFC RAILCAR. THE REAR END OF THE 40-FT UNIT WILL OVERHANG THE END OF THE CAR IF IT IS PLACED AT THE A-END. 20-FT AND 40-FT UNITS CAN BE LOADED ON THE SAME CAR.



MIL-STD-138-49 (NAVY)

**CONTAINER LOAD DATA**

NUMBER OF UNIT LOADS	4
NUMBER OF CROSSMEMBERS REQ'D	15
LOAD WEIGHT (APPROX)	2,960 LBS
DUNNAGE WEIGHT (APPROX)	170 LBS
CONTAINER WEIGHT	5,785 LBS
GROSS WEIGHT (APPROX)	8,915 LBS

**SECTION C-C**

4	SHIM	4 WIDE x 90 LONG x THICKNESS TO SUIT	AS REQD	-	-	-
3	STRUT	2 x 4 x TO SUIT	8	2	3/JOINT	10d
2	HORIZONTAL	2 x 4 x 96	8	SEE 1	-	-
1	VERTICAL	1 x 6 x 72	8	2	3/JOINT	6d
PIECE NO	DESCRIPTION	SIZE	NO PCS REQD	NAIL TO	NUMBER NAILS	SIZE

LIST OF MATERIALS AND NAILING DATA**TOPC/COFC, CONTAINERSHIP AND HIGHWAY**

REVIEW ACTIVITY:
NAVY US

PREPARING ACTIVITY
NAVY - OS
(PROJECT NO 8140-N252)

PAGE 3

SPECIFICATION ANALYSIS SHEET

Form 100-1
Budget Bureau No. 22 R 255

INSTRUCTIONS This sheet is to be filled out by personnel, either Government or contractor, involved in the use of the specification in procurement of products for ultimate use by the Department of Defense. This sheet is provided for obtaining information on the use of this specification which will insure that suitable products can be procured with a minimum amount of delay and at the least cost. Comments and the return of this form will be appreciated. Fold on lines on reverse side, staple in corner, and send to preparing activity. Comments and suggestions submitted on this form do not constitute or imply authorization to waive any portion of the referenced document(s) or serve to amend contractual requirements.

SPECIFICATION

MIL-STD-1386-49 (NAVY)

ORGANIZATION

CITY AND STATE

CONTRACT NUMBER

MATERIAL PROCURED UNDER A

☐ DIRECT GOVERNMENT CONTRACT ☐ SUBCONTRACT

1. HAS ANY PART OF THE SPECIFICATION CREATED PROBLEMS OR REQUIRED INTERPRETATION IN PROCUREMENT USE?

A. GIVE PARAGRAPH NUMBER AND WORDING

B. RECOMMENDATIONS FOR CORRECTING THE DEFICIENCIES

2. COMMENTS ON ANY SPECIFICATION REQUIREMENT CONSIDERED TOO RIGID

3. IS THE SPECIFICATION RESTRICTIVE?

☐ YES ☐ NO (If "yes", in what way?)

4. REMARKS (Attach any pertinent data which may be of use in improving this specification. If there are additional papers, attach to form and place both in an envelope addressed to preparing activity)

SUBMITTED BY (Printed or typed name and activity - Optional)

DATE

DD FORM 1426
1 JAN 66

REPLACES 1 OF 10 T 51 WHICH MAY BE USED

S/N-G102-11-1001 C 21 54

F01.0

POSTAGE AND FEES

OFFICIAL BUSINESS

Commanding Officer
Naval Ammunition Depot Earle
Naval Weapons Handling Laboratory
Colts Neck, New Jersey 07722

Attn: 803

F01.0