

MILITARY STANDARD
LOADING OF HAZARDOUS
MATERIALS AND ASSOCIATED ITEMS
IN MILVAN CONTAINERS
CARTRIDGE, 7.62MM, BALL M30
AMPHIBIOUS UNIT LOAD

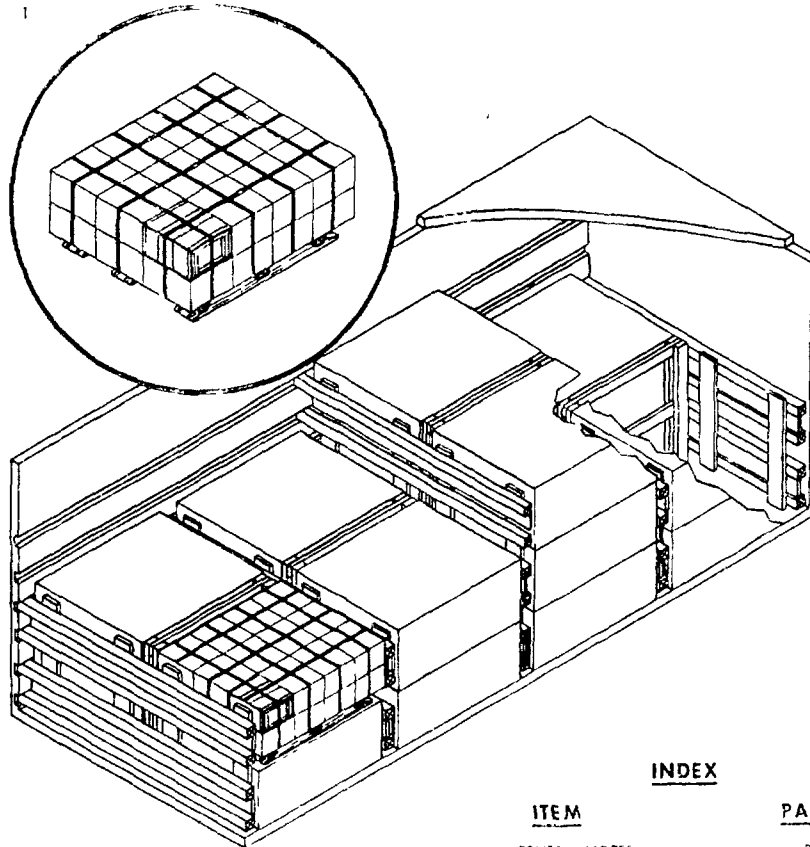
MIL-STD 1386-42

(NAVY)

18 JUNE 1974

UNIT LOAD DATA

UNIT LOAD DRAWING: WR 55 0 & VR 55 6
 DIMENSIONS: 30 1/8 L x 42 1/4 W x 21 H
 CUBE: 26.3 CU FT
 WEIGHT: SEE TABLE I
 DOT HAZARD CLASSIFICATION: EXFLOS 1.5 C
 COAST GUARD CLASS: I

**NOTES**

1. UNLESS OTHERWISE SPECIFIED DIMENSIONS ARE IN INCHES
2. FOR CROSS REFERENCE TO ASSOCIATED PALLETIZING, TRUCKLOADING AND CARLOADING MILITARY STANDARDS REFER TO THE INDEX TO STANDARDS MIL-HDBK-236 (NAVY)

INDEX

ITEM	PAGE
GENERAL NOTES	2
TOFC COFC CONTAINERSHIP AND HIGHWAY	2 & 3
DETAILS	4

FSC 8140

AUTHORIZED FOR TRAILER-ON-FLAT-CAR (TOFC), CONTAINER-ON-FLAT-CAR (COFC), CONTAINERSHIP AND HIGHWAY SHIPMENTS

**US COAST GUARD
 APPROVAL
 NOT REQUIRED**

**APPROVED BY
 BUREAU OF EXPLOSIVES**

A. J. Grassmuck
 DATE: 6/10/74

[Signature] 6/17/74
 SIGNATURE TECHNICAL DIRECTION AGENT (IDA) DATE

[Signature] 6/20/74
 SIGNATURE ORIGINATOR BY DIRECTION DATE

ORIGINATOR

[Signature]
 SIGNATURE

NAVAL WEAPONS HANDLING LABORATORY
 N A D EARLE, NEW JERSEY

PAGE 1 OF 4

MIL-STD-1385-32 (NAVY)

GENERAL NOTES

1. THIS DOCUMENT GIVES DETAILED INSTRUCTIONS FOR LOADING THE MILVAN CONTAINER WITH A MAXIMUM NET LOAD OF 62,000 LB. BALL CARTRIDGES. THE UNIT LOADS SHALL BE PALLETIZED IN ACCORDANCE WITH JP-50.5 OR JP-50.6.
2. THE MILVAN SHALL BE EQUIPPED WITH A MECHANICAL LOAD-SPACING SYSTEM THAT MEETS THE REQUIREMENTS OF THE BUREAU OF EXPLOSIVES PAMPHLET 6C.
3. IN ADDITION TO THE BELT RAILS REQUIRED BY PAMPHLET 6C, THE MILVAN CONTAINER HAS BELT RAILS AT THE 10' AND 20' HEIGHTS FROM THE CONTAINER FLOOR.
4. CONTAINERS ARE EQUIPPED WITH 25 CROSSMEMBERS. UNUSED CROSSMEMBERS MUST REMAIN WITH THE CONTAINER AND SHALL BE FASTENED INTO BELT RAILS FOR SHIPMENT.

CAUTION

WHEN POSITIONING CROSSMEMBERS MAKE A VISUAL CHECK TO ENSURE THAT CROSSMEMBERS ARE LOCKED SECURELY IN PLACE.

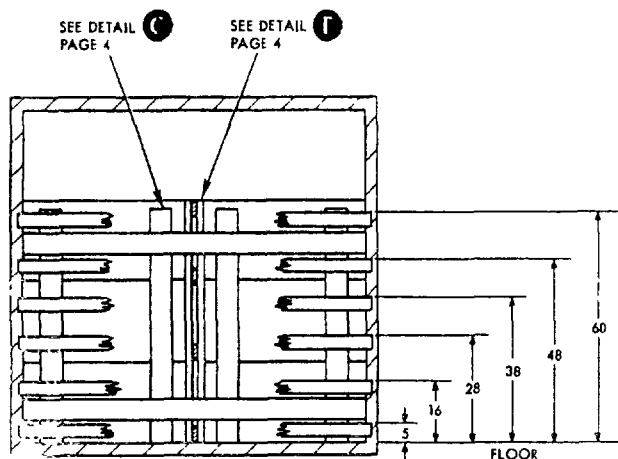
5. WHEN LONGITUDINAL SLACK BETWEEN A CROSSMEMBER AND SEPARATOR GATE IS GREATER THAN ONE INCH, USE FILL MATERIAL TO SHIM BETWEEN THE CROSSMEMBER AND SEPARATOR GATE AS SHOWN IN DETAIL G, PAGE 4.
6. THICKNESS OF FILLER ASSEMBLIES, DETAILS E AND F, MAY BE VARIED TO FILL THE VOID BETWEEN UNIT LOADS.
7. APPLICABLE MATERIAL SPECIFICATIONS:
DUNNAGE LUMBER - FED. SPEC. FPM-L-751
NAILS - FED. SPEC. FF-N-105, TYPE II, STYLE 10, COMMON BRIGHT.
8. AFTER BLOCKING AND BRACING HAS BEEN INSPECTED, ATTACH SHIPPING DOCUMENTS INSIDE THE CONTAINER IN A VISIBLE ACCESSIBLE AREA AND CLOSE AND SEAL CONTAINER DOORS.

TOFC/COFC, CONTAINERSHIP AND HIGHWAY

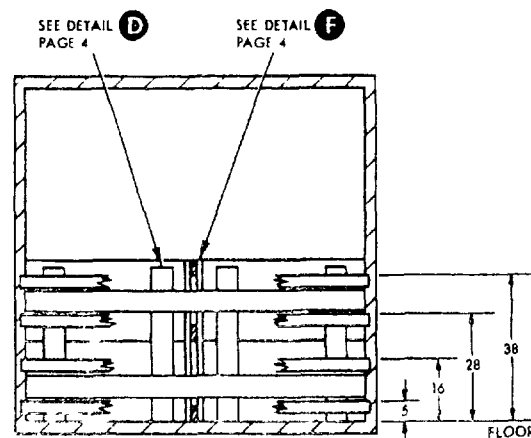
1. THE CONTAINER LOAD CONSISTS OF 18 UNIT LOADS WHICH MUST BE LOADED AND DUNNAGED IN ACCORDANCE WITH THIS DOCUMENT.
2. THE LOADED MILVAN CONTAINER SHALL BE ON A 20 FT MILVAN CHASSIS EQUIPPED WITH DOUBLE BOGIES WHEN BEING MOVED IN TOFC SERVICE.
3. WHEN THE LOADED CONTAINER IS IN TOFC OR COFC SERVICE, IT SHALL BE ON FLAT RAILCARS THAT COMPLY WITH BUREAU OF EXPLOSIVES PAMPHLET 6C.
4. THE LOADED MILVAN MAY BE MOVED OVER PUBLIC HIGHWAYS ON A 20 FT MILVAN CHASSIS EQUIPPED WITH DOUBLE BOGIES OR ON SUITABLE COMMERCIAL EQUIPMENT OF APPROPRIATE CAPACITY.

NOTE

IN CERTAIN STATES THE GROSS VEHICLE WEIGHT (G.V.W.) IS LIMITED BY THE DISTANCE BETWEEN THE AXLES OF THE ASSEMBLED RIG. CARE SHOULD BE TAKEN TO SEE THAT THE PROPOSED G.V.W. DOES NOT EXCEED THESE LIMITATIONS.



SECTION A-A



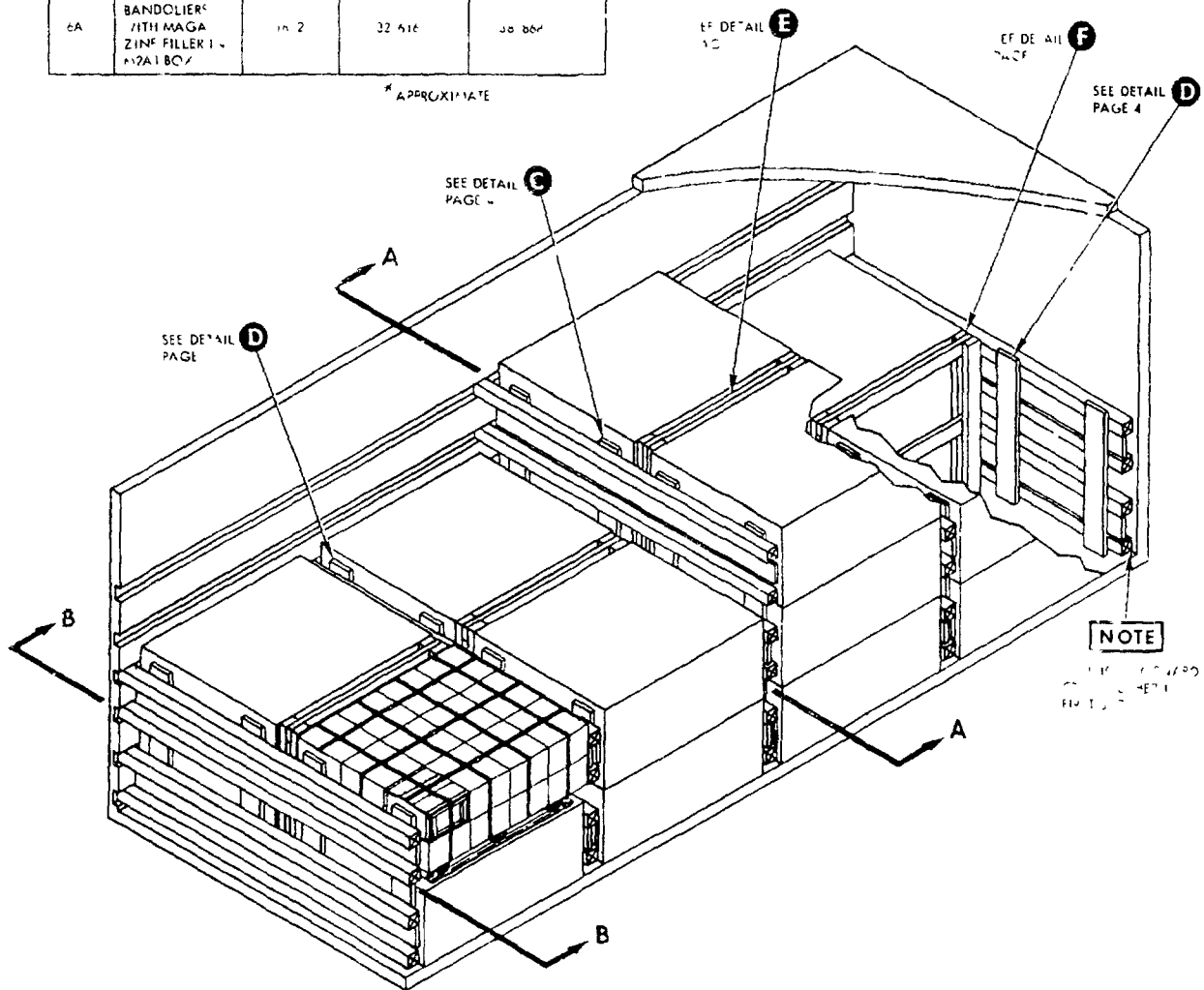
SECTION B-B

JAIL-STD-1386-42 (NAVY)

TABLE I

NR-55	DESCRIPTION	ITEMS WEIGHT LB	UNIT GROSS WEIGHT LB	CC CROSS SECTION LB
5A	CLIPS 1 BANDOLIER AND 1/2A1 BO	1778	28	37
6A	CLIPS 1 BANDOLIER WITH MAGA ZINE FILLER 1 1/2A1 BO	1778	32	37

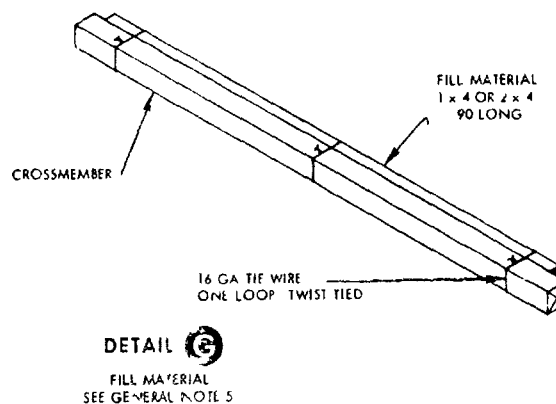
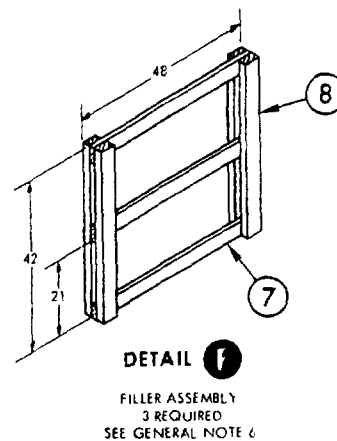
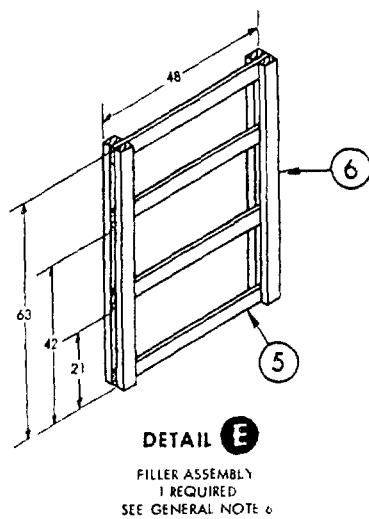
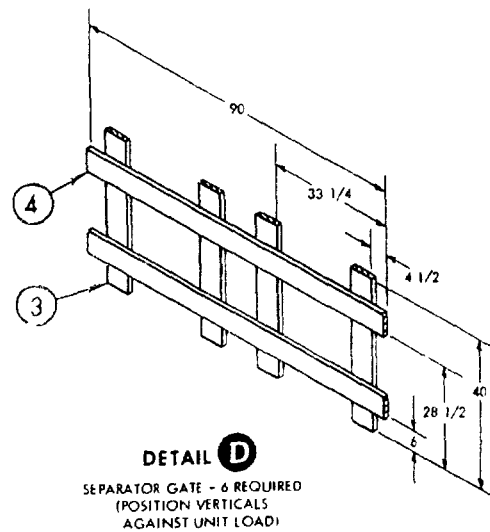
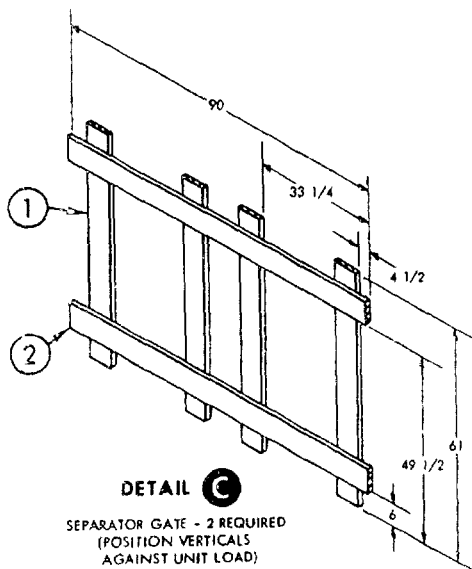
* APPROXIMATE

**CONTAINER LOAD DATA**

NUMBER OF 1 IT LOADS 2
 NUMBER OF CROSS BANDS REQUIRED 2
 LOAD WEIGHT SEE TABLE
 DUNNAGE WEIGHT 5
 CONTAINER WEIGHT 37 LB
 GROSS WEIGHT SEE TABLE

8	10	1				
7	10	1				
6	10	1				
5	10	1				
4	10	1				
3	10	1				
2	10	1				
1	10	1				
PIECE NO	DESCRIPTION	SIZE	NO PCS	NAIL TO	NUMBER	SIZE

MIL-STD-1386-42 (NAVY)



REVIEW ACTIVITY
NAVY - OS

PREPARING ACTIVITY
NAVY - OS
PROJECT NO 814J-N231

SPECIFICATION ANALYSIS SHEET		Form Approved Budget Bureau No 22-R235
INSTRUCTIONS This sheet is to be filled out by personnel, either Government or contractor, involved in the use of the specification in procurement of products for ultimate use by the Department of Defense. This sheet is provided for obtaining information on the use of this specification which will insure that suitable products can be procured with a minimum amount of delay and at the least cost. Comments and the return of this form will be appreciated. Fold on lines on reverse side, staple in corner, and send to preparing activity. Comments and suggestions submitted on this form do not constitute or imply authorization to waive any portion of the referenced document(s) or serve to amend contractual requirements.		
SPECIFICATION MIL-STD-1386-42 (NAVY)		
ORGANIZATION		
CITY AND STATE	CONTRACT NUMBER	
MATERIAL PROCURED UNDER A <input type="checkbox"/> DIRECT GOVERNMENT CONTRACT <input type="checkbox"/> SUBCONTRACT		
1 HAS ANY PART OF THE SPECIFICATION CREATED PROBLEMS OR REQUIRED INTERPRETATION IN PROCUREMENT USE? A GIVE PARAGRAPH NUMBER AND WORDING		
B RECOMMENDATIONS FOR CORRECTING THE DEFICIENCIES		
2 COMMENTS ON ANY SPECIFICATION REQUIREMENT CONSIDERED TOO RIGID		
3 IS THE SPECIFICATION RESTRICTIVE? <input type="checkbox"/> YES <input type="checkbox"/> NO (If "yes", in what way?)		
4 REMARKS (Attach any pertinent data which may be of use in improving this specification. If there are additional papers, attach to form and place both in an envelope addressed to preparing activity)		
SUBMITTED BY (Printed or typed name and activity - Optional)		DATE

DD FORM 1426

1 JAN 65

REPLACES EDITION OF 1 OCT 64 WHICH MAY BE USED

S/N 0102-014-1 01 C 132 1

FOLD

POSTAGE AND FEES PAID

OFFICIAL BUSINESS

DOD 316

Commanding Officer
Naval Weapons Handling Laboratory
Naval Ammunition Depot Earle
Colts Neck, New Jersey 07722

FOLD