

MILITARY STANDARD

LOADING OF HAZARDOUS MATERIALS AND ASSOCIATED ITEMS IN MILVAN CONTAINERS

MIL STD-1385 41

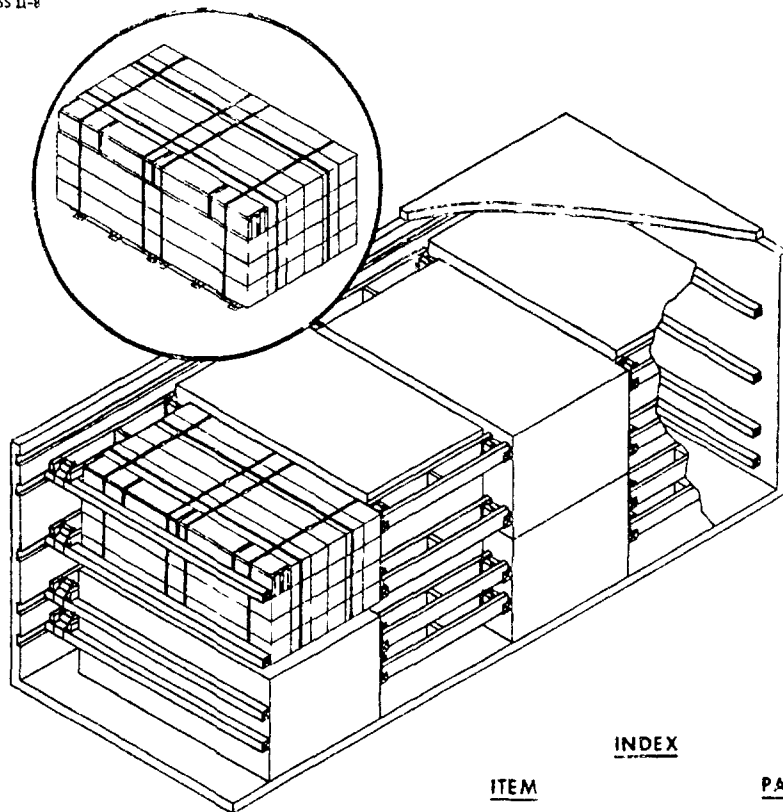
(NAVY)

7 JUNE 1974

ROCKET MOTOR, MK 16 & MODS AND MK 71 MOD 0 & 1 (ZUNI)
IN CONTAINER MK 38 MOD 0
FLEET ISSUE UNIT LOAD

UNIT LOAD DATA

UNIT LOAD DRAWING VR-54 28 & VR-54 257
DIMENSIONS 81 1/8 L x 49 1/2 W x 78 3/8 H
CUBE 89.2 CU FT
WEIGHT SEE TABLE 1
DOT HAZARD CLASSIFICATION EXPLOSIVES B
COAST GUARD CLASS II-B

**NOTES**

- 1 UNLESS OTHERWISE SPECIFIED DIMENSIONS ARE IN INCHES
- 2 FOR CROSS REFERENCE TO ASSOCIATED PALLETIZING, TRUCKLOADING AND CARLOADING MILITARY STANDARDS, REFER TO THE INDEX TO STANDARDS MIL-HDBK-236 (NAVY)

INDEX

ITEM	PAGE
GENERAL NOTES	2
TOFC COFC CONTAINERSHIP & HIGHWAY	2 & 3
DETAILS	4

FSC 8140

**AUTHORIZED FOR TRAILER-ON-
FLAT-CAR (TOFC), CONTAINER-ON-
FLAT-CAR (COFC), CONTAINERSHIP
AND HIGHWAY SHIPMENTS**

**US COAST GUARD
APPROVAL
NOT REQUIRED**

**APPROVED BY
BUREAU OF EXPLOSIVES**

DATE 5/23/74

SIGNATURE *[Signature]* 1/1/74 6/3/74
TECHNICAL DIRECTION AGENT (TDA) DATE
SIGNATURE *[Signature]* 6/3/74
BY COM BY DIRECTION DATE

ORIGINATOR

NAVAL WEAPONS HANDLING LABORATORY
NAD EARLE, NEW JERSEY

PAGE 1 OF 1

MIL-STD-1386-41 (NAVY)

GENERAL NOTES

1. THIS DOCUMENT GIVES DETAILED INSTRUCTIONS FOR LOADING THE MILVAN CONTAINER WITH FLEET ISSUE UNIT LOADS OF ROCKET MOTORS, MK 16 & MODS AND MK 71 MOD 0 & 1. MOTORS SHALL BE PALLETIZED IN ACCORDANCE WITH WR 54 28 OR 19 5-25.
2. THE MILVAN SHALL BE EQUIPPED WITH A MECHANICAL LOAD-BRACING SYSTEM THAT MEETS THE REQUIREMENTS OF BUREAU OF EXPLOSIVES PAMPHLET 6C.
3. IN ADDITION TO THE BELT RAILS REQUIRED BY PAMPHLET 6C, THE MILVAN CONTAINER HAS BELT RAILS AT THE 72 AND 83 INCH HEIGHTS FROM THE CONTAINER FLOOR.

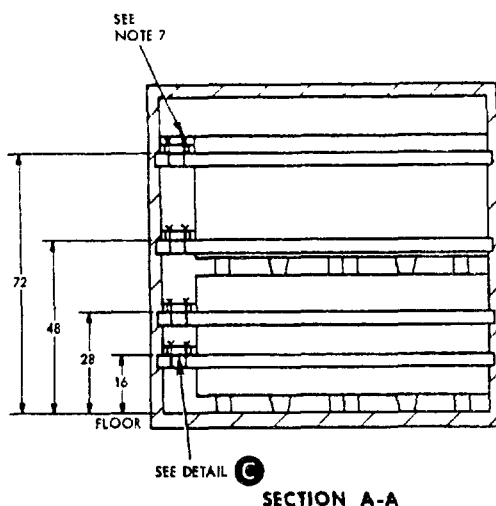
CAUTION

WHEN POSITIONING CROSSMEMBERS, MAKE A VISUAL CHECK TO ENSURE THAT THE CROSSMEMBERS ARE LOCKED SECURELY IN PLACE.

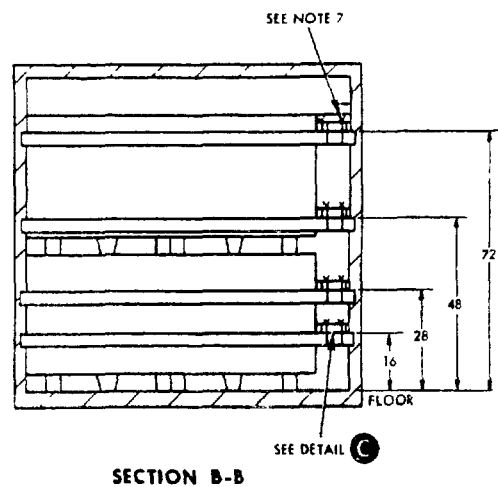
4. CONTAINERS ARE EQUIPPED WITH 25 CROSSMEMBERS. UNUSED CROSSMEMBERS MUST REMAIN WITH CONTAINER AND SHALL BE FASTENED INTO BELT RAILS FOR SHIPMENT.
5. WHEN LONGITUDINAL SLACK BETWEEN A CROSSMEMBER AND THE UNIT LOAD IS GREATER THAN ONE INCH, USE FILL MATERIAL TO SHIM BETWEEN CROSSMEMBER AND UNIT LOAD AS SHOWN IN DETAIL D.
6. UNIT LOADS ARE LOADED IN A STAGGERED PATTERN WITH THE 1ST AND 3RD BAYS AGAINST LEFT WALL OF MILVAN AND THE 2ND AND 4TH BAYS AGAINST RIGHT WALL OF MILVAN.
7. LENGTH OF STRUT PIECE 2 SHALL BE SUFFICIENT TO CAUSE SWAY BRACE ASSEMBLY (DETAIL C) TO BLAR AGAINST UNIT LOAD AND CONTAINER SIDEWALL. TWIST TIE ASSEMBLY TO CROSSMEMBERS WITH 16 GAUGE TIE WIRE, FOUR PLACES.
8. APPLICABLE MATERIAL SPECIFICATIONS:
DUNNAGE LUMBER - FED SPEC MM 1-751
NAILS - FED SPEC FF-N-105 TYPE II, STYLE 10, COMMON BRIGHT.
9. AFTER BLOCKING AND BRACING HAS BEEN INSPECTED, ATTACH SHIPPING DOCUMENTS INSIDE THE CONTAINER IN AN ACCESSIBLE AREA, CLOSE AND SEAL CONTAINER DOORS AND ATTACH APPLICABLE PLACARDS TO THE OUTSIDE OF THE CONTAINER FOR THE APPROPRIATE MODE OF TRANSPORTATION AS PRESCRIBED IN OP 2165 (VOL 1).

TOFC/COFC, CONTAINERSHIP AND HIGHWAY

1. THE LOADED MILVAN CONTAINER SHALL BE ON A 20-FT MILVAN CHASSIS EQUIPPED WITH DOUBLE BOGIES WHEN BEING MOVED IN TOFC SERVICE.
2. WHEN THE MILVAN CONTAINER IS SHIPPED TOFC OR COFC, THE RAIL CAR SHALL COMPLY WITH THE REQUIREMENTS OF THE BUREAU OF EXPLOSIVES PAMPHLET 6C.
3. THE LOADED CONTAINER MAY BE TRANSPORTED OVER PUBLIC HIGHWAYS ON A 20 FT MILVAN CHASSIS EQUIPPED WITH A DOUBLE BOGIE. SUITABLE CAPACITY COMMERCIAL EQUIPMENT MAY ALSO BE USED.



SECTION A-A

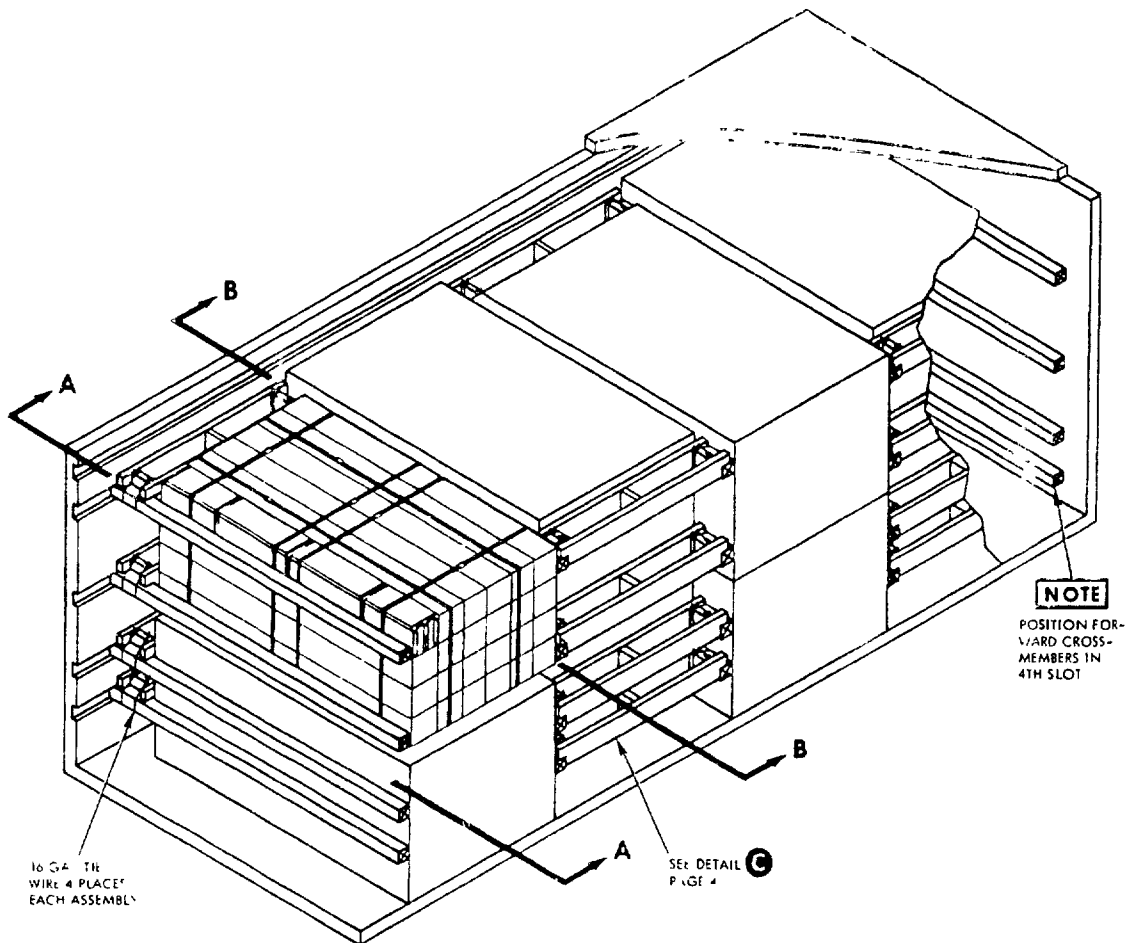


SECTION B-B

MIL-STD-1386-41 (NAVY)

TABLE I

W/P 54	ITEM	UNIT LOAD WEIGHT (LBS)	CONTAINER LOAD WT (LBS)	CONTAINER GROSS WT (LBS)
28	ROCKET MOTOR Mk 16 MOD 1	2741	21 924	28 159
26	ROCKET MOTOR Mk 71 MOD 2	2813	22 504	28 725
257	ROCKET MOTOR Mk 71 MOD 1	3125	23 000	31 271

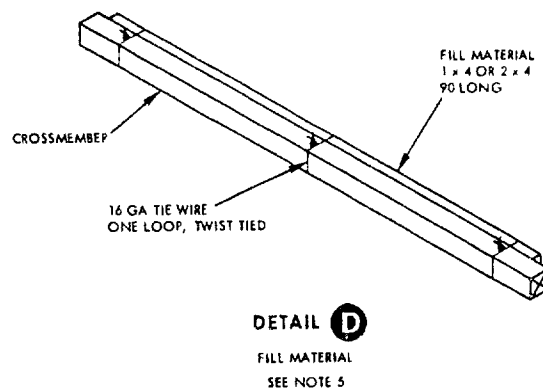
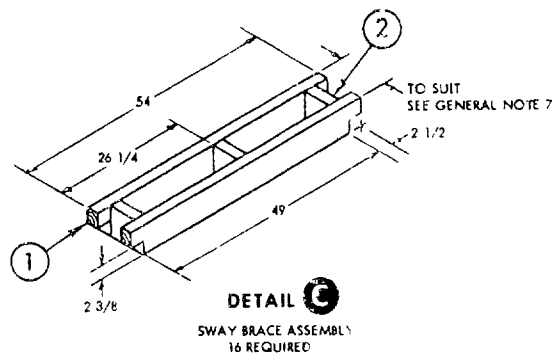
**CONTAINER LOAD DATA**

NUMBER OF UNIT LOADS	8
NUMBER OF CROSSMEMBERS REQD	20
LOAD WEIGHT	SEE TABLE I
DUNNAGE WEIGHT	446 LBS
CONTAINER WEIGHT	5785 LBS
RIS WEIGHT	SEE TABLE I

2	STRUT	2 x 6 x TO SUIT	48	SEE 1	-	-
1	STRINGER	2 x 6 x 54	32	2	3 PER JOINT	16d
PIECE NO	DESCRIPTION	SIZE	NO PCS REQD	NAIL TO	NUMBER	SIZE
						NAILS

LIST OF MATERIALS AND NAILING DATA

MIL-STD-1386-41 (NAVY)



REVIEW ACTIVITY
NAVY - OS

PREPARING ACTIVITY
NAVY - OS
(PROJECT NO 8140-N231)

SPECIFICATION ANALYSIS SHEET		Form Approved Budget Bureau No 22-R235
INSTRUCTIONS This sheet is to be filled out by personnel, either Government or contractor, involved in the use of the specification in procurement of products for ultimate use by the Department of Defense. This sheet is provided for obtaining information on the use of this specification which will insure that suitable products can be procured with a minimum amount of delay and at the least cost. Comments and the return of this form will be appreciated. Fold on lines on reverse side, staple in corner, and send to preparing activity. Comments and suggestions submitted on this form do not constitute or imply authorization to waive any portion of the referenced document(s) or serve to amend contractual requirements.		
SPECIFICATION <div style="border: 1px solid black; padding: 2px; display: inline-block;">MIL-STD-1386-41 (NAVY)</div>		
ORGANIZATION <div style="border: 1px solid black; height: 20px;"></div>		
CITY AND STATE <div style="border: 1px solid black; height: 20px;"></div>	CONTRACT NUMBER <div style="border: 1px solid black; height: 20px;"></div>	
MATERIAL PROCURED UNDER A <input type="checkbox"/> DIRECT GOVERNMENT CONTRACT <input type="checkbox"/> SUBCONTRACT		
1. HAS ANY PART OF THE SPECIFICATION CREATED PROBLEMS OR REQUIRED INTERPRETATION IN PROCUREMENT USE? A. GIVE PARAGRAPH NUMBER AND WORDING <div style="border: 1px solid black; height: 100px;"></div>		
B. RECOMMENDATIONS FOR CORRECTING THE DEFICIENCIES <div style="border: 1px solid black; height: 100px;"></div>		
2. COMMENTS ON ANY SPECIFICATION REQUIREMENT CONSIDERED TOO RIGID <div style="border: 1px solid black; height: 100px;"></div>		
3. IS THE SPECIFICATION RESTRICTIVE? <input type="checkbox"/> YES <input type="checkbox"/> NO (If "yes", in what way?) <div style="border: 1px solid black; height: 100px;"></div>		
4. REMARKS (Attach any pertinent data which may be of use in improving this specification. If there are additional papers, attach to form and place both in an envelope addressed to preparing activity) <div style="border: 1px solid black; height: 100px;"></div>		
SUBMITTED BY (Printed or typed name and activity - Optional) <div style="border: 1px solid black; height: 20px;"></div>		DATE <div style="border: 1px solid black; height: 20px;"></div>

DD FORM 1426
1 JAN 68

REPLACES EDITION OF 1964 WHICH MAY BE USED.

S/N-0102-014-1801

C-96364

7010

POSTAGE AND FEES PAID

OFFICIAL BUSINESS

DOD 316

Commanding Officer
Naval Ammunition Depot Earle
Naval Weapons Handling Laboratory
Colts Neck, New Jersey 07722

#010