

# MILITARY STANDARD

MIL-STD-1386-37

## LOADING OF HAZARDOUS MATERIALS AND ASSOCIATED ITEMS IN MILVAN CONTAINERS

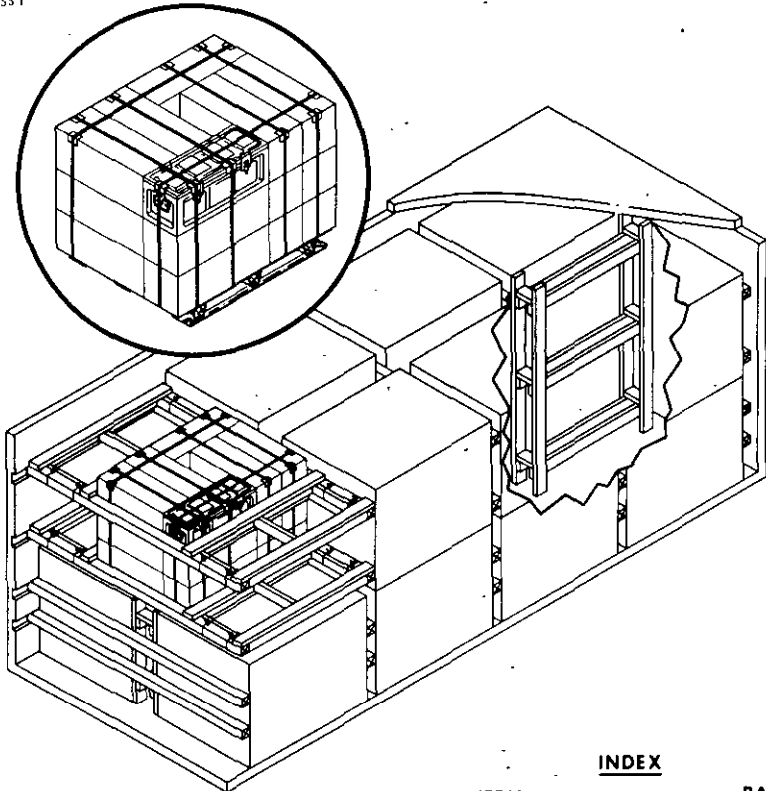
(NAVY)

7 JUNE 1974

INITIATOR, MK 13 MOD 0  
(FOR FIRE BOMB)  
IN CONTAINER CNU 157/E  
FLEET ISSUE UNIT LOAD

### UNIT LOAD DATA

UNIT LOAD DRAWING . . . . . WR-54/203  
WEIGHT . . . . . 2524 LBS  
DIMENSIONS . . . . . 51 3/8 L x 40 1/4 W x 39 1/4 H  
CUBE . . . . . 46.9 CU FT  
DOT HAZARD CLASSIFICATION . . . . . EXPLOSIVE C  
COAST GUARD CLASSIFICATION . . . . . CLASS I



**NOTES:**

1. UNLESS OTHERWISE SPECIFIED DIMENSIONS ARE IN INCHES.
2. FOR CROSS REFERENCE TO ASSOCIATED PALLETIZING, TRUCKLOADING AND CARLOADING MILITARY STANDARDS, REFER TO THE INDEX TO STANDARDS, MIL-HDBK-236 (NAVY).

ITEM	INDEX	PAGE
GENERAL NOTES		2
COFC & CONTAINERSHIP		2 & 3
DETAILS		4

FSC 8140

**AUTHORIZED FOR CONTAINER-ON-FLAT-CAR (COFC), CONTAINERSHIP AND MOVEMENT ABOARD DEPOT (NON-PUBLIC) ROADS ONLY.**

**US COAST GUARD APPROVAL NOT REQUIRED**

**APPROVED BY BUREAU OF EXPLOSIVES**

*A. F. Grassmuck*  
DATE 5/23/74

*W. S. Gray* NWHL 6/3/74  
SIGNATURE TECHNICAL DIRECTION AGENT (TDA) DATE  
*P. E. Kelly* 6/3/74  
SIGNATURE AIRSYSCOM BY DIRECTION DATE

ORIGINATOR *Charles M. Brice* 6/3/74  
SIGNATURE

NAVAL WEAPONS HANDLING LABORATORY  
N A D EARLE, NEW JERSEY

## MIL-STD-1386-37 (NAVY)

## GENERAL NOTES

1. THIS DOCUMENT GIVES DETAILED INSTRUCTIONS FOR LOADING THE MILVAN CONTAINER WITH FLEET ISSUE UNIT LOADS OF MK 13 MOD 0 INITIATORS. THE UNIT LOAD SHALL BE PALLETIZED IN ACCORDANCE WITH WR-54/203.
2. THE MILVAN SHALL BE EQUIPPED WITH A MECHANICAL LOAD-BRACING SYSTEM THAT MEETS THE REQUIREMENTS OF THE BUREAU OF EXPLOSIVES PAMPHLET 6C.
3. IN ADDITION TO THE BELT RAILS REQUIRED BY PAMPHLET 6C, THE MILVAN CONTAINER HAS BELT RAILS AT THE 72 AND 83 INCH HEIGHTS FROM THE CONTAINER FLOOR.

**CAUTION**

WHEN POSITIONING CROSSMEMBERS, MAKE A VISUAL CHECK TO ENSURE THAT CROSSMEMBERS ARE LOCKED SECURELY IN PLACE.

4. CONTAINERS ARE EQUIPPED WITH 25 CROSSMEMBERS. UNUSED CROSSMEMBERS MUST REMAIN WITH THE CONTAINER AND SHALL BE FASTENED INTO BELT RAILS FOR SHIPMENT.
5. WHEN THE VOID BETWEEN THE CROSSMEMBER AND THE UNIT LOAD IS GREATER THAN ONE INCH, USE FILL MATERIAL TO SHIM BETWEEN CROSSMEMBER AND UNIT LOAD AS SHOWN IN DETAIL C.
6. WIDTH OF FILLER ASSEMBLIES, DETAIL D AND DETAIL E MAY VARY. ASSEMBLIES SHOULD FILL THE VOID BETWEEN THE UNIT LOADS WITH THE UNIT LOADS AGAINST THE SIDE WALLS OF THE CONTAINER.
7. LENGTH OF STRUT, PIECE 8, SHALL BE SUFFICIENT TO CAUSE DETAIL F, TO FILL THE VOID BETWEEN THE UNIT LOAD AND THE CONTAINER SIDE WALL. TWIST TIE BOTH ENDS OF DETAIL F TO CROSSMEMBER WITH 16 GAUGE SOFT-ANNEALED WIRE (FOUR PLACES).
8. APPLICABLE MATERIAL SPECIFICATIONS.  
DUNNAGE LUMBER - FED. SPEC. MM-L-751,  
NAILS - FED. SPEC. - FF-N-105, TYPE II, STYLE 10, COMMON BRIGHT.  
STRAP - FED. SPEC. QQ-5-781, TYPE I, CLASS A.
9. AFTER BLOCKING AND BRACING HAS BEEN INSPECTED, ATTACH SHIPPING DOCUMENTS INSIDE THE CONTAINER IN AN ACCESSIBLE AREA, CLOSE AND SEAL CONTAINER DOORS AND ATTACH APPLICABLE PLACARDS TO THE OUTSIDE OF THE CONTAINER FOR THE APPROPRIATE MODE OF TRANSPORTATION AS PRESCRIBED IN OP 2165 (VOL. 1).

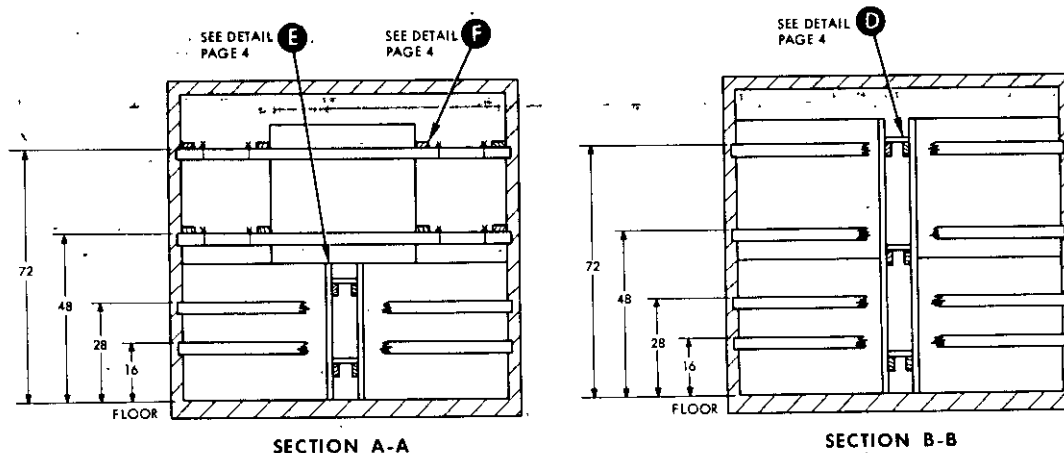
## COFC AND CONTAINERSHIP ONLY

1. THE CONTAINER LOAD CONSISTS OF 15 UNIT LOADS WHICH MUST BE LOADED AND DUNNAGED IN ACCORDANCE WITH THIS DOCUMENT.

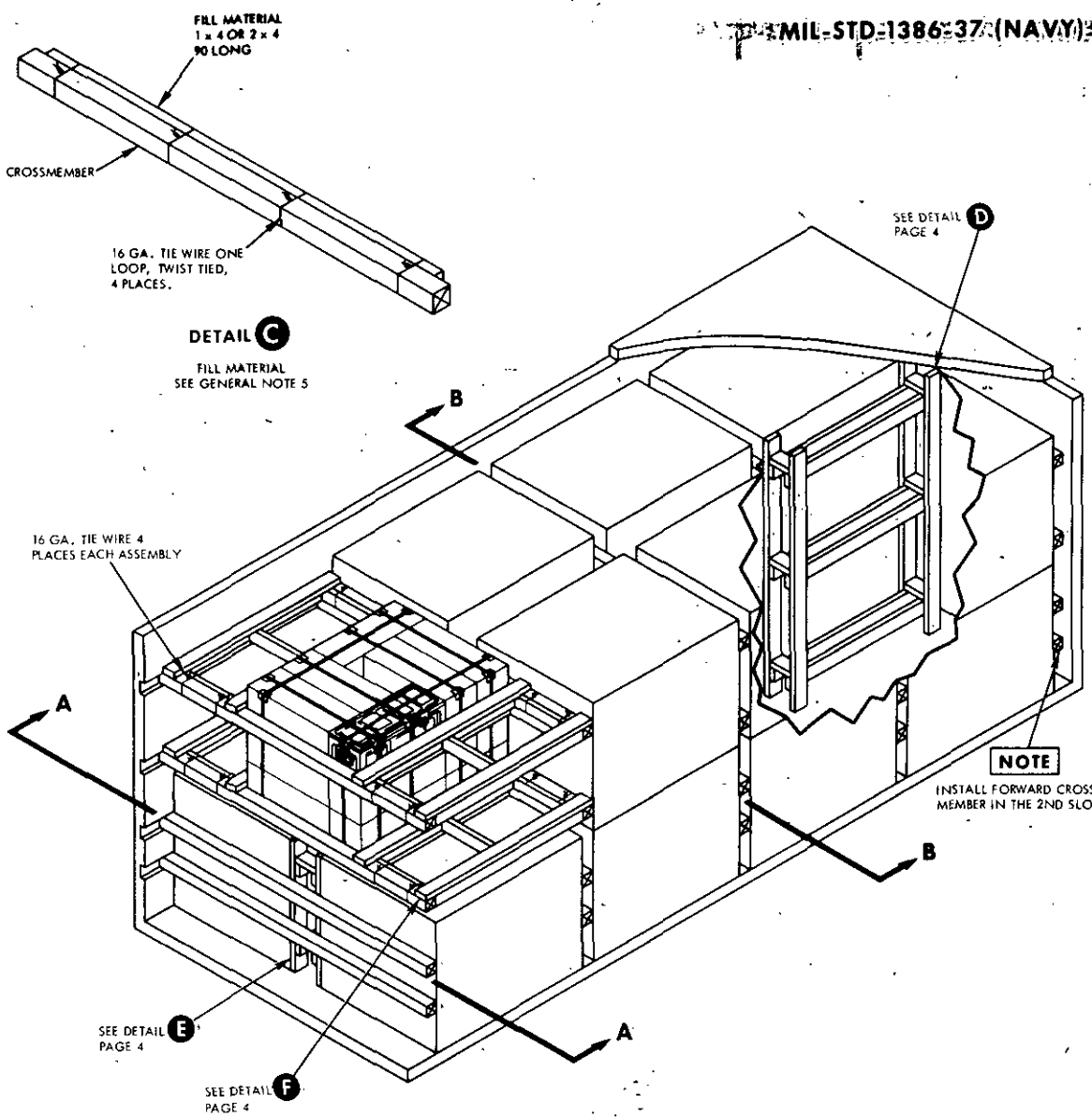
**WARNING**

BECAUSE THE WEIGHT LOADED INTO THIS CONTAINER EXCEEDS 34,000 LBS, THE MILVAN CHASSIS SHALL NOT BE USED TO TRANSPORT THE LOADED CONTAINER ON PUBLIC HIGHWAYS. THE LOADED CONTAINER MAY BE TRANSPORTED OVER DEPOT ROADS USING MILVAN CHASSIS EQUIPPED WITH DOUBLE BOGIES OR COMMERCIAL EQUIPMENT OF APPROPRIATE CAPACITY.

2. WHEN SHIPPING THE LOADED MILVAN CONTAINER COFC, THE FLAT CAR SHALL MEET THE REQUIREMENTS OF BUREAU OF EXPLOSIVES PAMPHLET 6C.



MIL-STD-1386-37 (NAVY) SET



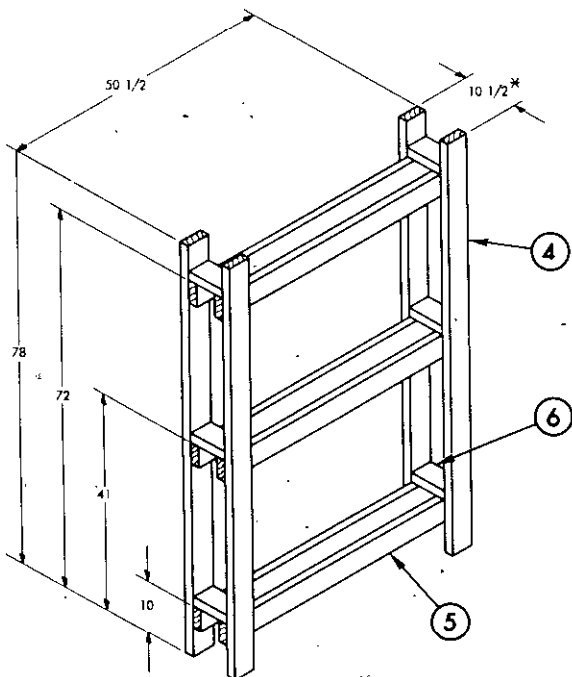
**CONTAINER LOAD DATA**

NUMBER OF UNIT LOADS	15
NUMBER OF CROSSMEMBERS	20
LOAD WEIGHT	37,860 LBS
DUNNAGE WEIGHT	430 LBS
CONTAINER WEIGHT	5,785 LBS
GROSS WEIGHT	44,075 LBS

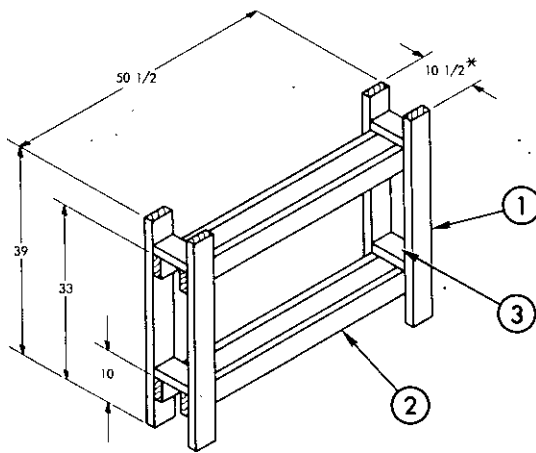
PIECE NO.	DESCRIPTION	SIZE	NO. PCS REQD	NAIL TO	NAILS	
					NUMBER	SIZE
9	RETAINER	2 x 4 x 56	8	8/7	1/JOINT	16d
8	STRUT	2 x 4 TO SUIT	12	SEE 7	-	-
7	LONGITUDINAL	2 x 4 x 51	8	8	2/JOINT	16d
6	SPREADER	2 x 4 x 7 1/2	18	TOENAIL 4 & 5	2/JOINT	10d
5	HORIZONTAL	2 x 4 x 50 1/2	18	SEE 4	-	-
4	VERTICAL	2 x 4 x 78	12	5	3/JOINT	10d
3	SPREADER	2 x 4 x 7 1/2	4	TOENAIL 1 & 2	2/JOINT	10d
2	HORIZONTAL	2 x 4 x 50 1/2	4	SEE 1	-	-
1	VERTICAL	2 x 4 x 39	4	2	3/JOINT	10d

LIST OF MATERIALS AND NAILING DATA.

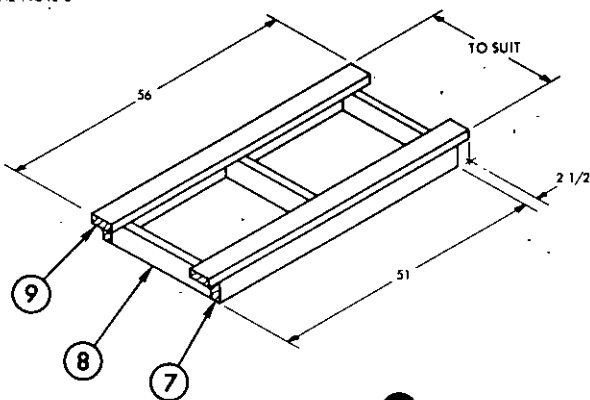
# MIL-STD-1386-37 (NAVY)



**DETAIL D**  
FILLER ASSEMBLY  
3 REQUIRED  
\* SEE GENERAL NOTE 6



**DETAIL E**  
FILLER ASSEMBLY  
1 REQUIRED  
\* SEE GENERAL NOTE 6



**DETAIL F**  
SWAY BRACE  
4 REQUIRED  
SEE GENERAL NOTE 8, PAGE 2

REVIEW ACTIVITY:  
NAVY - OS

PREPARING ACTIVITY:  
NAVY - OS  
(PROJECT NO. 8140-N-226)