

MILITARY STANDARD

LOADING OF HAZARDOUS
MATERIALS AND ASSOCIATED ITEMS
IN MILVAN CONTAINERS

BOMB GUIDANCE KIT, KMU-351 A/B

(LESS SEEKER ASSEMBLY)

FLEET ISSUE UNIT LOAD

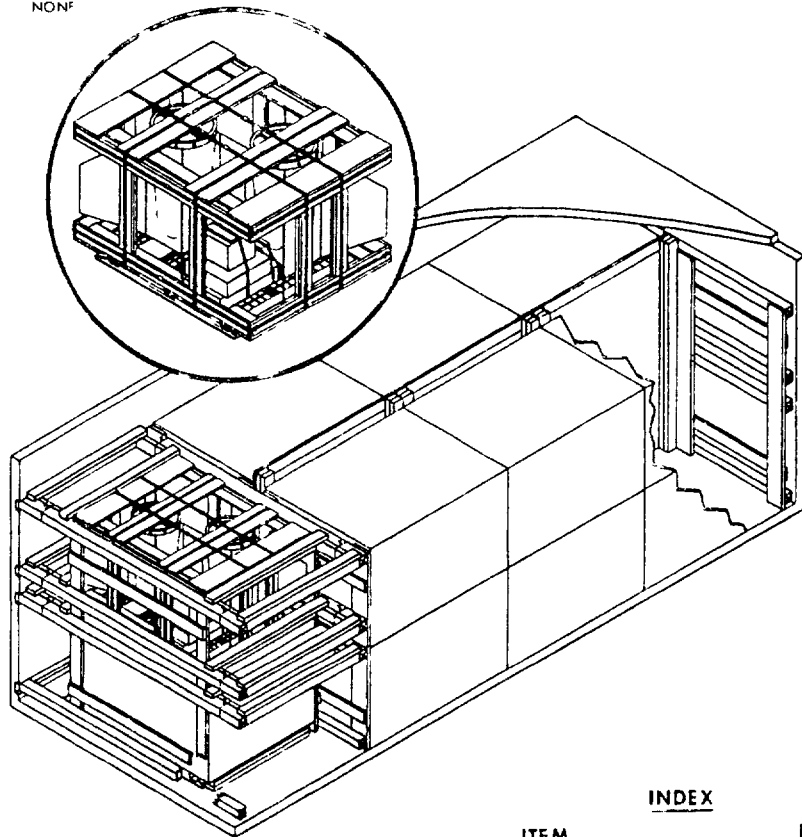
MIL-STD-1386-133

(NAVY)

11 JANUARY 1974

UNIT LOAD DATA

UNIT LOAD DRAWING	WP-547236
WEIGHT	484 LBS
DIMENSIONS	57 L x 44 W x 36 3/8 H
CUBE	52.7 CU. FT
DOT HAZARD CLASSIFICATION	INERT
COAST GUARD CLASSIFICATION	NONF



NOTES

1. UNLESS OTHERWISE SPECIFIED DIMENSIONS ARE IN INCHES
2. FOR CROSS REFERENCE TO ASSOCIATED PALLETIZING, TRUCKLOADING AND CARLOADING MILITARY STANDARDS, REFER TO THE INDEX TO STANDARDS, MIL-HDBK-236 (NAVY).

INDEX

ITEM	PAGE
GENERAL NOTES	2
TOFC, COFC, CONTAINERSHIP & HIGHWAY	2-3
DETAILS	4

FSC 8140

**AUTHORIZED FOR TRAILER-ON-
FLAT-CAR (TOFC), CONTAINER-ON-
FLAT-CAR (COFC), CONTAINERSHIP
AND HIGHWAY SHIPMENTS**

<i>McBride</i> 12/16/73 SIGNATURE TECHNICAL DIRECTION AGENT (TDA) DATE	
<i>J.E. Kell</i> 12/19/73 SIGNATURE AIR SYS COM BY DIRECTION DATE	

ORIGINATOR

Charles McPhee 12/5/73
 SIGNATURE

 NAVAL WEAPONS HANDLING LABORATORY
 1400 EARLE, NEW JERSEY

PAGE 1 OF 1

MIL STD-1386-36 (NAVY)

GENERAL NOTES

- 1 THIS DOCUMENT GIVES DETAILED INSTRUCTIONS FOR LOADING THE MILVAN CONTAINER WITH 14 UNIT LOADS OF BOMB GUIDANCE KITS, KMU-351 A/B (LESS SEEKER ASSEMBLY). THE BOMB GUIDANCE KITS SHALL BE PALLETIZED IN ACCORDANCE WITH 11R-51/236
- 2 THE MILVAN SHALL BE EQUIPPED WITH A MECHANICAL LOAD BRACING SYSTEM THAT MEETS THE REQUIREMENTS OF THE BUREAU OF EXPLOSIVES PAMPHLET 6C
- 3 IN ADDITION TO THE BELT RAILS REQUIRED BY PAMPHLET 6C, THE MILVAN CONTAINER HAS BELT RAILS AT THE 72 AND 83 INCH HEIGHTS FROM THE CONTAINER FLOOR

CAUTION

WHEN POSITIONING CROSSMEMBERS MAKE A VISUAL CHECK TO ENSURE THAT THE CROSSMEMBERS ARE LOCKED SECURELY IN PLACE

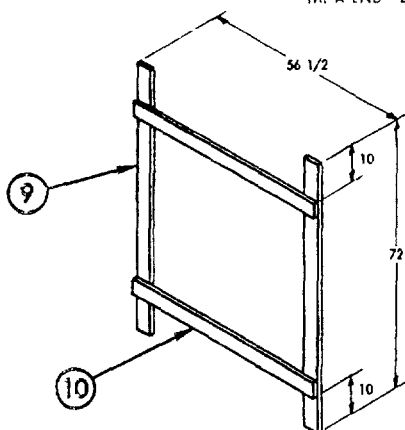
- 4 CONTAINERS ARE EQUIPPED WITH 25 CROSSMEMBERS. UNUSED CROSSMEMBERS MUST REMAIN WITH CONTAINER AND SHALL BE FASTENED INTO BELT RAILS FOR SHIPMENT
- 5 WHEN THE LONGITUDINAL SLACK BETWEEN A CROSSMEMBER AND THE UNIT LOAD IS GREATER THAN ONE INCH, USE FILL MATERIAL TO SHIM BETWEEN CROSSMEMBER AND UNIT LOAD AS SHOWN IN DETAIL F
- 6 LENGTH OF STRUT, PIECE E, SHALL BE SUFFICIENT TO CAUSE DETAIL E TO FILL THE VOID BETWEEN THE UNIT LOAD AND THE CONTAINER SIDE WALL. TWIST TIE BOTH ENDS OF THE ASSEMBLY TO THE CROSSMEMBER WITH 16 GAUGE SOFT ANNEALED WIRE.
- 7 APPLICABLE MATERIAL SPECIFICATIONS
DUNNAGE LUMBER - FED SPEC MM-L-751
NAILS - FED SPEC, FF-N-105, TYPE II, STYLE 10, COMMON BRIGHT
- 8 AFTER BLOCKING AND BRACING HAS BEEN INSPECTED, ATTACH SHIPPING DOCUMENTS INSIDE THE CONTAINER IN AN ACCESSIBLE AREA AND CLOSE AND SEAL CONTAINER DOORS

TOFC/COFC, CONTAINERSHIP AND HIGHWAY

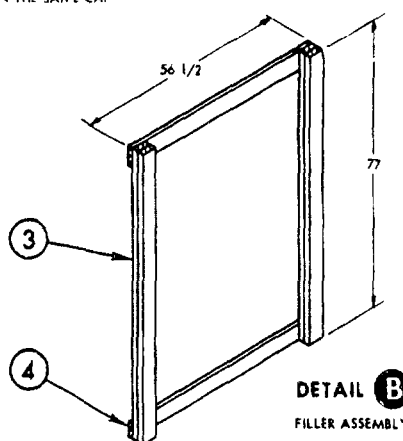
- 1 THE LOADED MILVAN CONTAINER SHALL BE ON A 20-FT MILVAN CHASSIS EQUIPPED WITH DOUBLE BOGIES WHEN BEING MOVED IN TOFC SERVICE
- 2 THE LOADED CONTAINER MAY BE TRANSPORTED OVER PUBLIC HIGHWAYS ON THE MILVAN CHASSIS USING THE FOLLOWING CONFIGURATIONS:
 - A ONE CONTAINER ON 20-FT MILVAN CHASSIS WITH A DOUBLE BOGIE AND PULLED BY A DOUBLE DRIVE AXLE TRACTOR
 - B TWO CONTAINERS ON A 40-FT MILVAN CHASSIS WITH A DOUBLE BOGIE AND PULLED BY A DOUBLE DRIVE AXLE TRACTOR
- 3 THE LOADED CONTAINER MAY BE TRANSPORTED OVER PUBLIC HIGHWAYS USING SUITABLE COMMERCIAL EQUIPMENT OF ADEQUATE CAPACITY AND PULLED BY A DOUBLE DRIVE AXLE TRACTOR. CONTAINERS MUST BE ADEQUATELY SECURED TO THE EQUIPMENT
- 4 THE LOADED CONTAINERS MAY BE SHIPPED TOFC/COFC. WHEN SHIPPING TOFC THE FOLLOWING CONFIGURATIONS ARE AUTHORIZED:
 - A ONE CONTAINER ON 20-FT MILVAN CHASSIS EQUIPPED WITH DOUBLE BOGIES
 - B TWO CONTAINERS ON 40-FT MILVAN CHASSIS EQUIPPED WITH DOUBLE BOGIES

WARNING

CHASSIS/CONTAINERS COUPLED INTO A 40-FT TRAILER CONFIGURATION MUST BE PLACED AT THE B-END OF THE TOFC RAILCAR. THE REAR END OF THE 40-FT UNIT WILL OVERHANG THE END OF THE CAR IF IT IS PLACED AT THE A-END. 20-FT AND 40-FT UNITS CAN BE LOADED ON THE SAME CAR.



DETAIL A
SEPARATOR GATE
2 REQUIRED

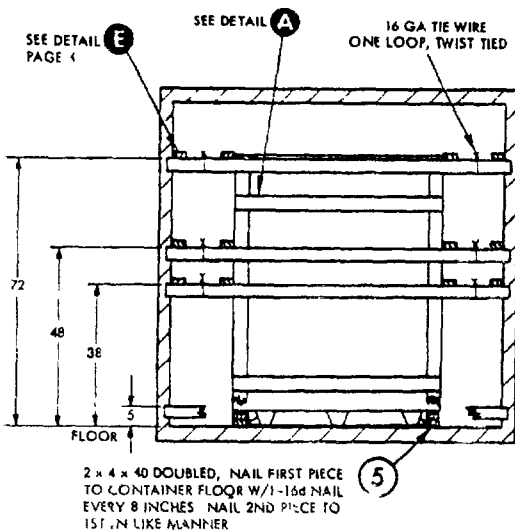
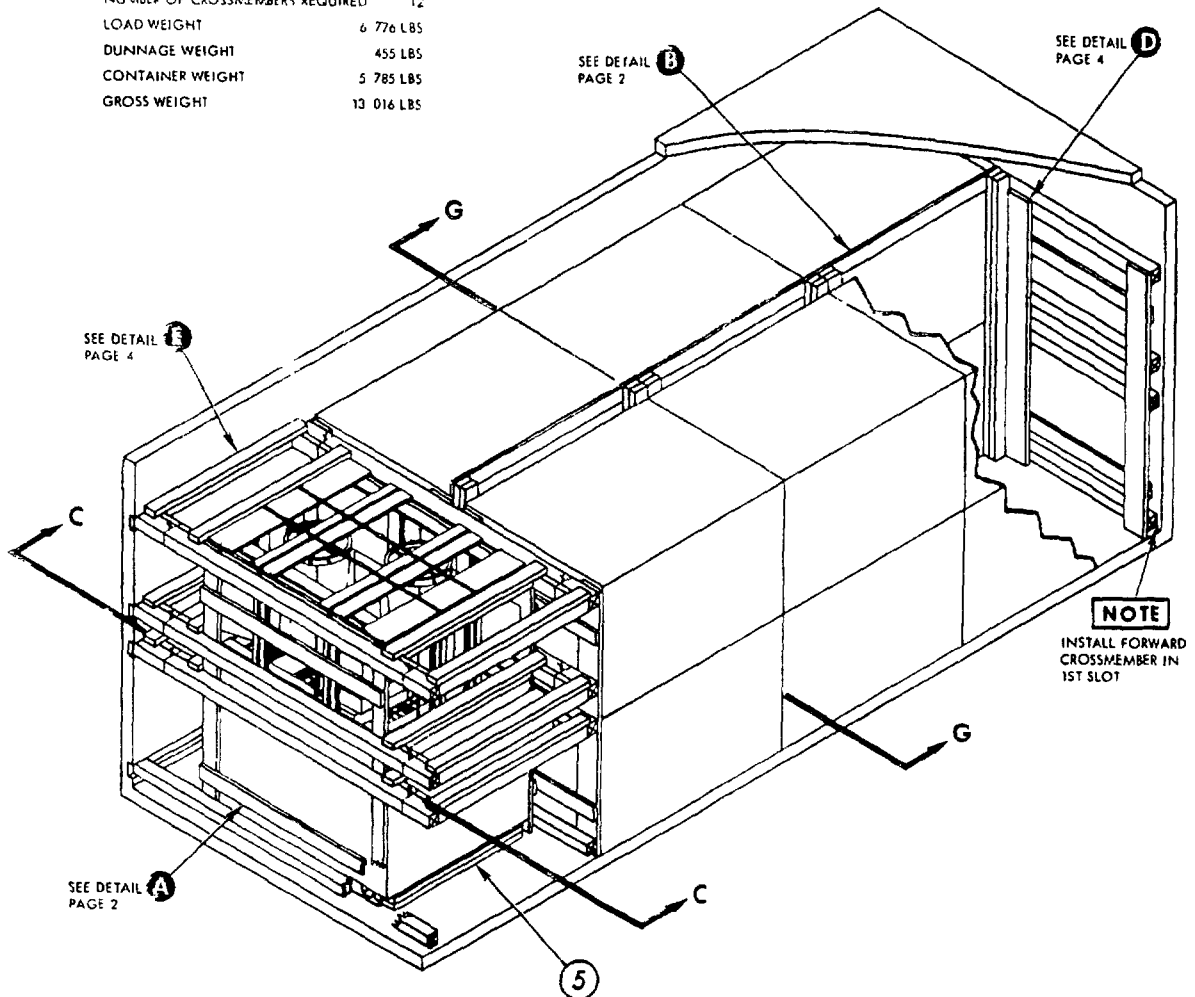


DETAIL B
FILLER ASSEMBLY
3 REQUIRED

MIL-STD-1386-36 (NAVY)

CONTAINER LOAD DATA

NUMBER OF UNIT LOADS	14
NUMBER OF CROSSMEMBERS REQUIRED	12
LOAD WEIGHT	6 776 LBS
DUNNAGE WEIGHT	455 LBS
CONTAINER WEIGHT	5 785 LBS
GROSS WEIGHT	13 016 LBS

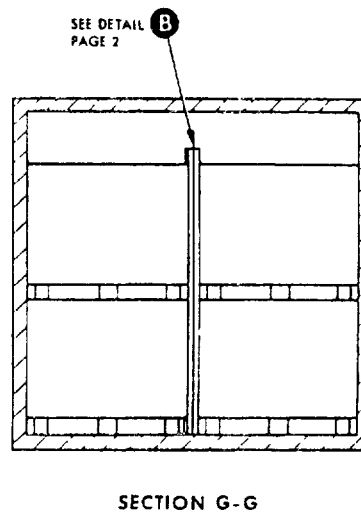
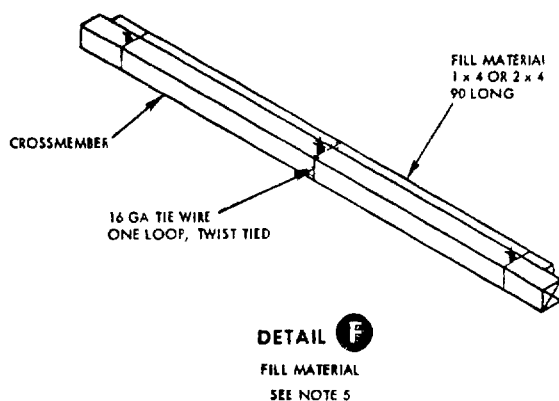
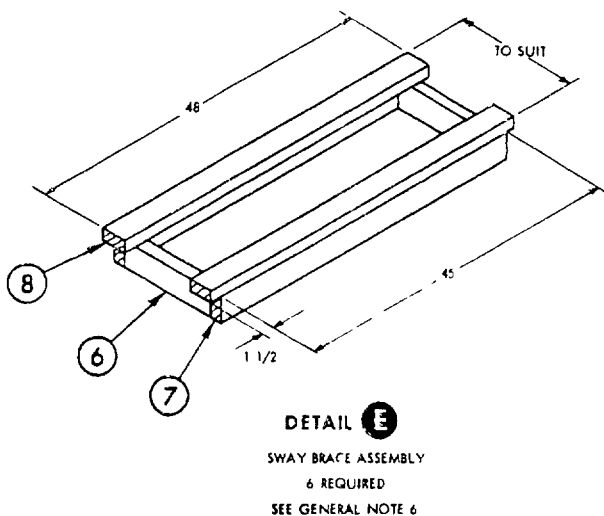
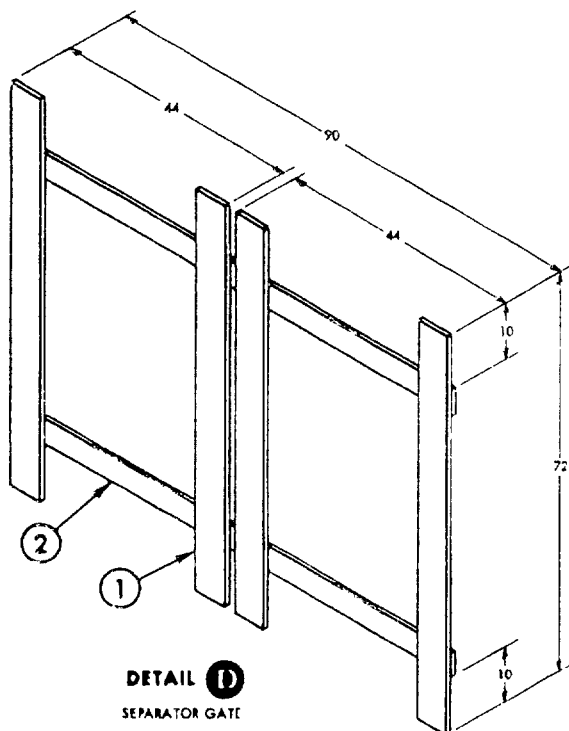


SECTION C-C

* CLINCHED

10	HORIZONTAL	1 x 4 x 56 1/2	4	9	3 PER JOINT	8d*
9	VERTICAL	1 x 4 x 72	4	SEE 10	-	
8	SUPPORT	2 x 4 x 46	12	7	7	10d
7	LONGITUDINAL	2 x 4 x 45	12	6	2 PER JOINT	16d
6	CROSSMEMBER	2 x 4 x TO SUIT	12	SEE 7	-	-
5	SLEEPER	2 x 4 x 40	4	SEE SECTION C-C		
4	HORIZONTAL	1 x 4 x 56 1/2	6	3	3 PER JOINT	10d
3	VERTICAL	2 x 4 x 77	12	-	4	10d
2	HORIZONTAL	1 x 4 x 90	4	SEE 1	-	-
1	VERTICAL	1 x 6 x 72	8	2	3 PER JOINT	8d*
PIECE NO	DESCRIPTION	SIZE	NO PCS REQD	NAIL TO	NUMBER	SIZE
LIST OF MATERIALS AND NAILING DATA						

MIL-STD-1386-36 (NAVY)



REVIEW ACTIVITY
NAVY-OS

PREPARING ACTIVITY
NAVY-OS
PROJECT NO 814G-N218