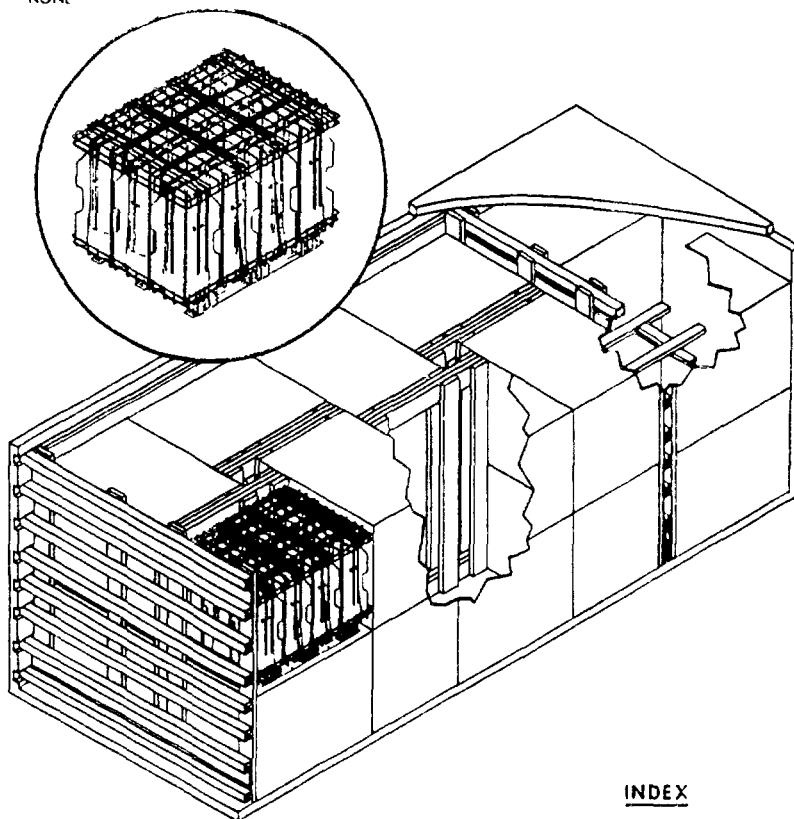


MILITARY STANDARD**MIL-STD-1386-34****LOADING OF HAZARDOUS
MATERIALS AND ASSOCIATED ITEMS
IN MILVAN CONTAINERS****(NAVY)**

11 JANUARY 1974

**FIN ASSEMBLY, BOMB, MK 15 AND MODS (SNAKEYE)
IN PALLET ADAPTER ADU-383/E
FLEET ISSUE UNIT LOAD****UNIT LOAD DATA**

UNIT LOAD DRAWING	VR-54/242
WEIGHT	971 LBS
DIMENSIONS	48 1/4 L x 36 1/4 W x 37 3/4 H
CUBE	38.2 CU FT
DOT HAZARD CLASSIFICATION	INERT
COAST GUARD CLASSIFICATION	NONE

**NOTES**

- 1 UNLESS OTHERWISE SPECIFIED DIMENSIONS ARE IN INCHES
- 2 FOR CROSS REFERENCE TO ASSOCIATED PALLETIZING, TRUCK LOADING AND CARLOADING MILITARY STANDARDS, REFER TO THE INDEX TO STANDARDS, MIL-HDBK-236 (NAVY).

INDEX

ITEM	PAGE
GENERAL NOTES	2
TOFC COFC, CONTAINERSHIP & HIGHWAY	2 & 3
DETAILS	4

FSC 8140**AUTHORIZED FOR TRAILER-ON-
FLAT-CAR (TOFC), CONTAINER-ON-
FLAT-CAR (COFC), CONTAINERSHIP
AND HIGHWAY SHIPMENTS**SIGNATURE *MS Gray* TECHNICAL DIRECTION AGENT (TDA) DATE *10/30/73*SIGNATURE *MS Gray* APPROVING DIRECTION DATE *10/30/73***ORIGINATOR**SIGNATURE *Gray - 10/30/73***NAVAL WEAPONS HANDLING LABORATORY
P.O. BOX 100, NEW JERSEY**

PAGE 1 OF 4

MIL ST-1386-34 (NAVY)

GENERAL NOTES

- 1 THIS DOCUMENT GIVES DETAILED INSTRUCTIONS FOR LOADING THE MILVAN CONTAINER WITH FLEET ISSUE UNIT LOADS OF BOMB FIN ASSEMBLIES MK 15 AND MODS IN PALLET ADAPTER ADU-3B3/E. THE UNIT LOAD SHALL BE IN ACCORDANCE WITH WR 34 24.
- 2 THE MILVAN SHALL BE EQUIPPED WITH A MECHANICAL LOAD-BRACING SYSTEM THAT MEETS THE REQUIREMENTS OF THE BUREAU OF EXPLOSIVES PAMPHLET 6C.
- 3 IN ADDITION TO THE BELT RAILS REQUIRED BY PAMPHLET 6C, THE MILVAN CONTAINER HAS BELT RAILS AT THE 72 AND 83 INCH HEIGHT FROM THE CONTAINER FLOOR.
- 4 CONTAINERS ARE EQUIPPED WITH 25 CROSSMEMBERS. UNUSED CROSSMEMBERS MUST REMAIN WITH THE CONTAINER AND SHALL BE FASTENED INTO BELT RAILS FOR SHIPMENT.

CAUTION

WHEN POSITIONING CROSSMEMBERS MAKE A VISUAL CHECK TO ENSURE THAT CROSSMEMBERS ARE LOCKED SECURELY IN PLACE.

- 5 WHEN THE LONGITUDINAL SLACK BETWEEN A CROSSMEMBER AND THE SEPARATOR GATE IS GREATER THAN ONE INCH, USE FILL MATERIAL TO SHIM BETWEEN CROSSMEMBER AND GATE AS SHOWN IN DETAIL C.
- 6 THICKNESS OF FILLER ASSEMBLY DETAIL D MAY BE VARIED TO FILL THE VOID BETWEEN UNIT LOADS BY VARYING THE THICKNESS OF PIECES 1 AND 2. ONE INCH SLACK IS PERMITTED.
- 7 APPLICABLE MATERIAL SPECIFICATIONS: DUNNAGE LUMBER - FED SPEC MM-L-751; NAILS - FED SPEC FF-N-105 TYPE II, STYLE 10, COMMON BRIGHT.
- 8 SWAY BRACE, DETAIL F, IS ASSEMBLED IN PLACE. PIECE 7 IS POSITIONED INBOARD OF THE OUTER LEGS OF THE PALLET SKIDS AND PIECE 6 IS POSITIONED AGAINST THE PALLET LEGS. NAIL PIECE 6 TO PIECE 7 WITH THREE 10d NAILS PER JOINT. CUT PIECE 5 TO FIT BETWEEN PIECES 6 AND NAIL TO PIECE 7 WITH THREE 10d NAILS.
- 9 AFTER BLOCKING AND BRACING HAS BEEN INSPECTED, ATTACH SHIPPING DOCUMENTS INSIDE THE CONTAINER IN AN ACCESSIBLE AREA AND CLOSE AND SEAL CONTAINER DOORS.

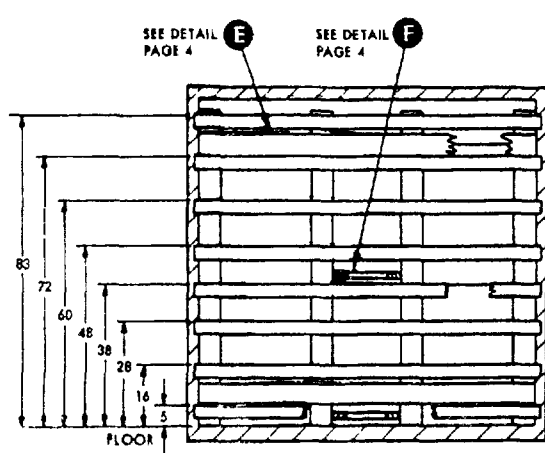
TOFC/COFC, CONTAINERSHIP AND HIGHWAY

- 1 THE LOADED MILVAN CONTAINER MUST BE ON A 20 FT MILVAN CHASSIS EQUIPPED WITH DOUBLE BOGIES WHEN BEING MOVED IN TOFC SERVICE.
- 2 THE LOADED MILVAN CONTAINER MAY BE TRANSPORTED OVER PUBLIC HIGHWAYS ON A 20 FT MILVAN CHASSIS EQUIPPED WITH A DOUBLE BOGIE AND PULLED BY A TRACTOR WITH A DOUBLE DRIVE AXLE.

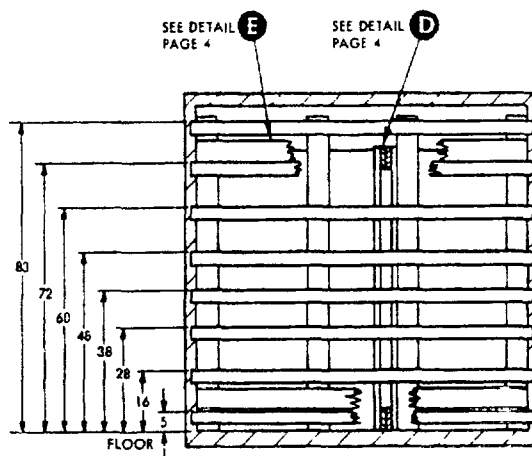
NOTE

IN CERTAIN STATES THE GROSS VEHICLE WEIGHT (G.V.W.) IS LIMITED BY THE DISTANCE BETWEEN THE AXLES OF THE ASSEMBLED RIG. CARE SHOULD BE TAKEN TO SEE THAT THE PROPOSED G.V.W. DOES NOT EXCEED THESE LIMITATIONS.

- 3 THE LOADED CONTAINER MAY ALSO BE TRANSPORTED OVER PUBLIC HIGHWAYS USING COMMERCIAL EQUIPMENT OF APPROPRIATE CAPACITY.



SECTION A-A

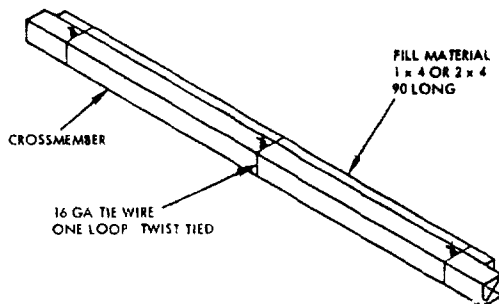
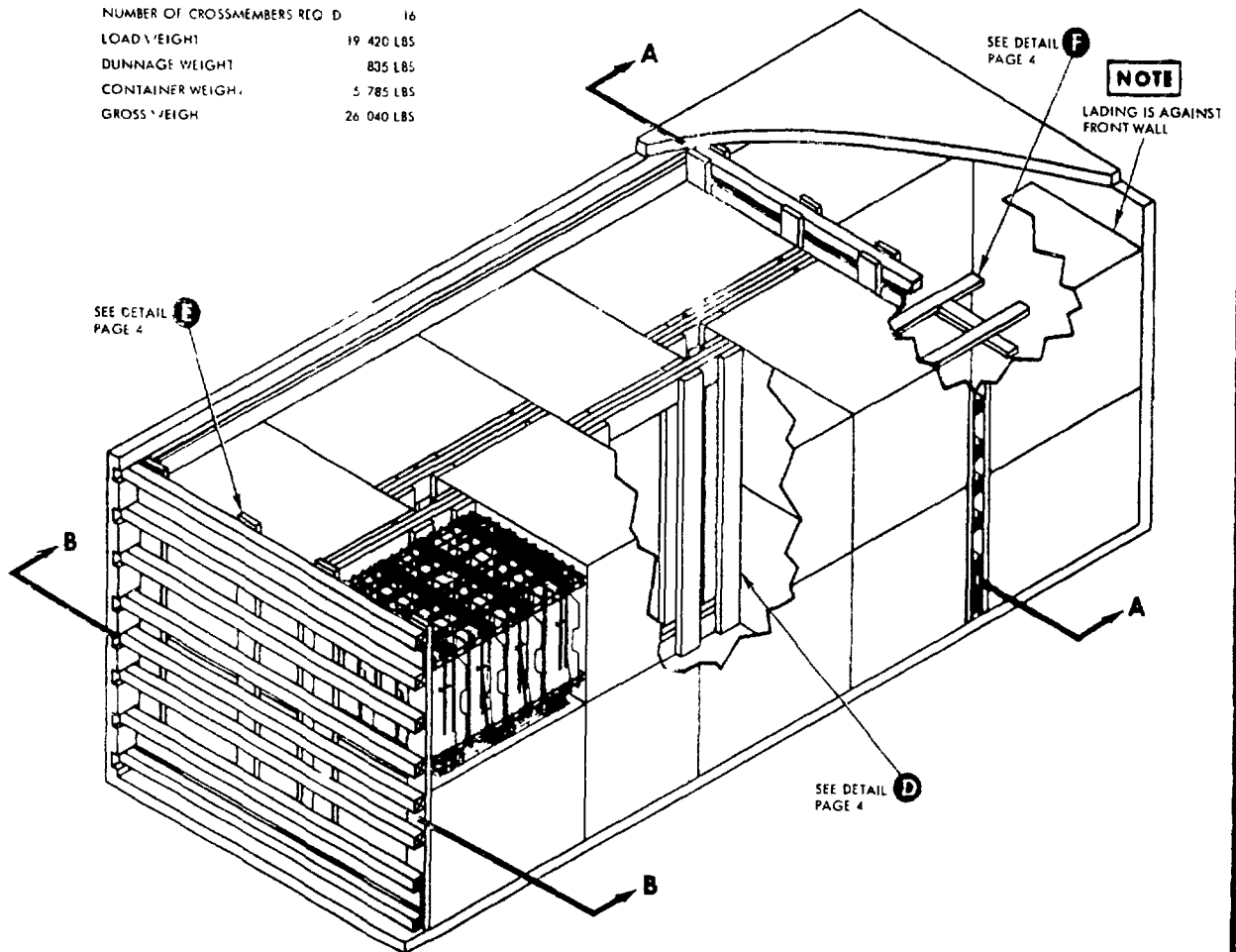


SECTION B-B

MIL-STD-1386-34 (NAVY)

CONTAINER LOAD DATA

NUMBER OF UNIT LOADS	20
NUMBER OF CROSSMEMBERS REQ'D	16
LOAD WEIGHT	19 420 LBS
DUNNAGE WEIGHT	835 LBS
CONTAINER WEIGHT	5 785 LBS
GROSS WEIGHT	26 040 LBS

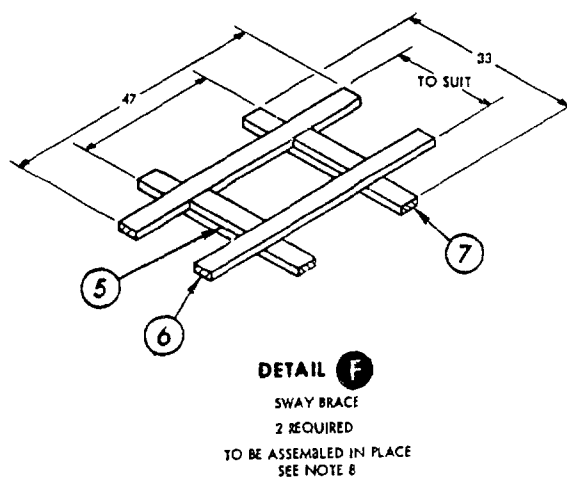
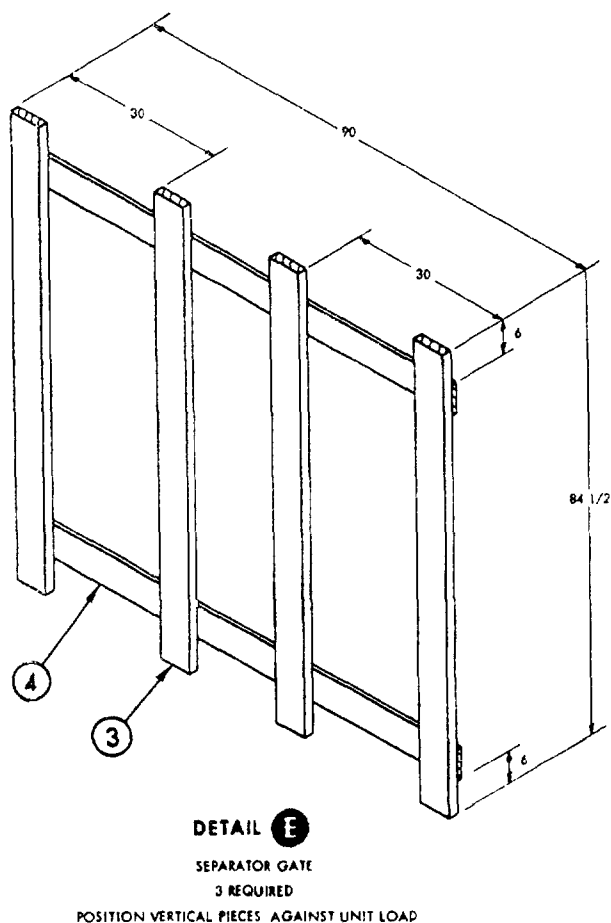
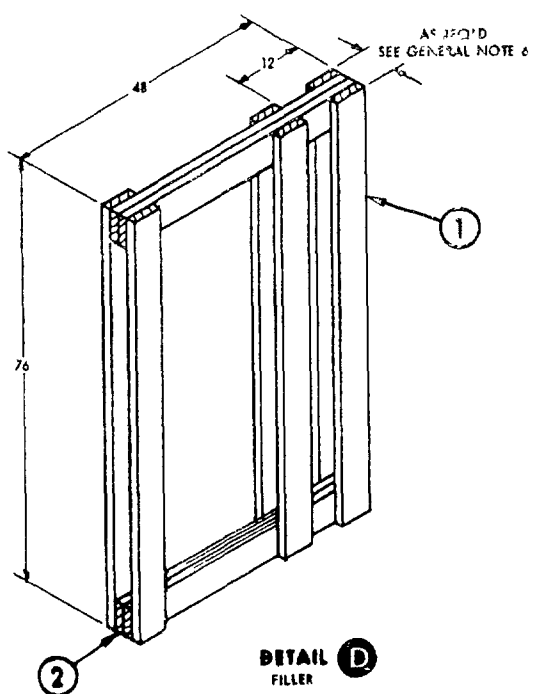


DETAIL 5
FILL MATERIAL
SEE NOTE 5

7	SUPPORT	2 x 4 x 30	4	SEE 5 & 6	-	-
6	STRINGER	2 x 4 x 47	4	7	3 PER JOINT	10d
5	SPACER	2 x 4 x TO SUIT	4	7	AS REQD	10d
4	HORIZONTAL	1 x 6 x 96	6	3	3 PER JOINT CLINCHED	10d
3	VERTICAL	2 x 6 x 84 1 2	12	SEE 4	-	-
2	HORIZONTAL	2 x 6 x 48	16	LAMINATE (DOUBLED)	4	10d
1	VERTICAL	2 x 6 x 75	24	2	3 PER JOINT	10d
PIECE NO	DESCRIPTION	SIZE	NO PCS REQD	NAIL TO	NUMBER NAILS	SIZE

LIST OF MATERIALS AND NAILING DATA

MIL-STD-1386-34 (NAVY)



REVIEW ACTIVITY
NAVY-OS, AS

PREPARING ACTIVITY
NAVY-OS
(PROJECT NO. 8140-N217)

STANDARDIZATION DOCUMENT IMPROVEMENT PROPOSAL

OMB No. 01
No. 2-7600

INSTRUCTIONS The purpose of this form is to solicit beneficial comments which will help achieve procurement of suitable products at reasonable cost and minimum delay, or will otherwise enhance use of the document. DoD contractors, government activities, or manufacturers/vendors who are prospective suppliers of the product are invited to submit comments to the government. Fold on lines on reverse side, staple in corner, and send to preparing activity. Comments submitted on this form do not constitute or imply authorization to waive any portion of the referenced document(s) or to amend contractual requirements. Attach any pertinent data which may be of use in improving this document. If there are additional papers, attach to form and place both in an envelope addressed to preparing activity.

DOCUMENT IDENTIFIER AND TITLE

MIL-STD-1386-34 (NAVY)

NAME OF ORGANIZATION AND ADDRESS

CONTRACT NUMBER

MATERIAL PROCURED UNDER A

☐ DIRECT GOVERNMENT CONTRACT ☐ SUBCONTRACT

1 HAS ANY PART OF THE DOCUMENT CREATED PROBLEMS OR REQUIRED INTERPRETATION IN PROCUREMENT USE?

A GIVE PARAGRAPH NUMBER AND WORDING

B RECOMMENDATIONS FOR CORRECTING THE DEFICIENCIES

2 COMMENTS ON ANY DOCUMENT REQUIREMENT CONSIDERED TOO RIGID

3 IS THE DOCUMENT RESTRICTIVE?

☐ YES ☐ NO (If "Yes", in what way?)

4 REMARKS

SUBMITTED BY (Printed or typed name and address - Optional)

TELEPHONE NO

DATE

DD FORM 1426
JAN 72

REPLACES EDITION OF 1 JAN 56 WHICH MAY BE USED

S/N 0102-014-1802

FOLD

POSTAGE AND FEES PAID



OFFICIAL BUSINESS
PENALTY FOR PRIVATE USE \$300

Naval Weapons Handling Lab.,
NAD Earle,
New Jersey 07722

FOLD