

MILITARY STANDARD

UNIT LOAD

FOR UNDERWAY REPLENISHMENT

HARM MISSILE, AGM-88

WINGS AND FINS

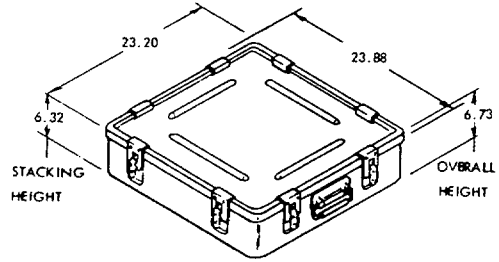
IN CONTAINER, CNU-296/E

MIL-STD-1323-371
(NAVY)
1 MAY 1991

UNIT LOAD DATA

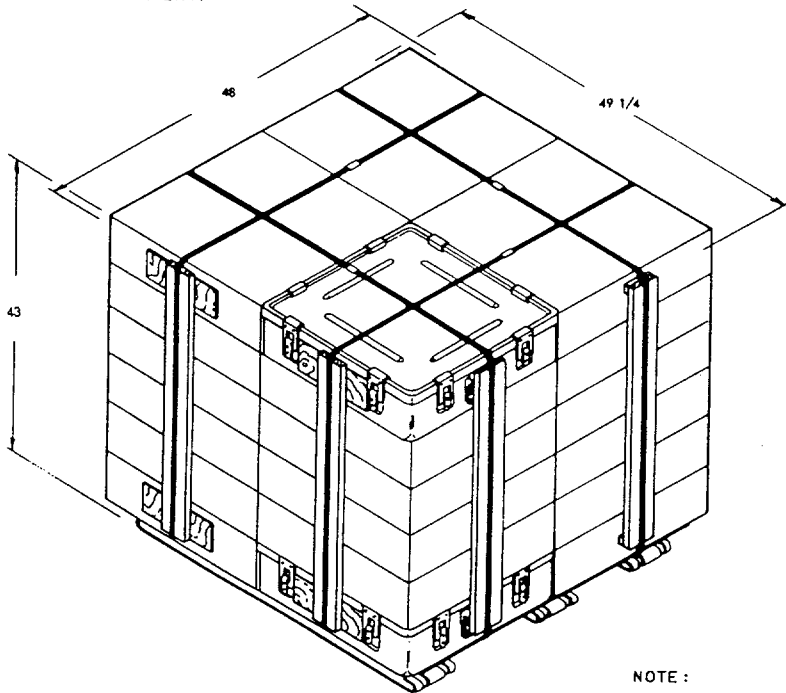
NUMBER OF WINGS AND CONTROL SURFACES PER CONTAINER....4 WINGS 4 FINS
 NUMBER OF CONTAINERS PER UNIT LOAD..... 24
 GROSS WEIGHT OF ONE CONTAINER..... 87.7 LBS
 WEIGHT OF DUNNAGING..... 16.0 LBS
 WEIGHT OF STRAPPING 5 LBS
 WEIGHT OF PALLET..... 94 LBS
 GROSS WEIGHT OF UNIT LOAD..... 2220 LBS
 CUBE 58.8 CU FT

△ DO NOT USE FOR SHIPPING WEIGHT
 DO NOT STACK MORE THAN 3 UNIT LOADS HIGH IN STORAGE.



HAZARD CLASSIFICATION

DOT NONE (INERT)
 CG..... NONE (INERT)



AMSC NO. - N/A

DISTRIBUTION STATEMENT A
 APPROVED FOR PUBLIC RELEASE:
 DISTRIBUTION IS UNLIMITED.

NOTE:
 UNLESS OTHERWISE SPECIFIED, DIMENSIONS ARE IN INCHES.
 FOR CROSS REFERENCE TO ASSOCIATED TRUCKLOADING,
 CONTAINERLOADING AND CARLOADING MILITARY
 STANDARDS, REFER TO INDEX TO STANDARDS,
 MIL-HDBK-236 (NAVY).

REV LTR	REVISION DESCRIPTION	DATE	TDA	SYSCOM
				APPROVAL

FSC 8140

THIS UNIT LOAD IS AUTHORIZED AND RELEASED FOR SHIPPING, HANDLING, STORAGE AND TRANSFER-AT-SEA. IT MAY ALSO BE USED FOR DOMESTIC SHIPMENT IN COMPLIANCE WITH DOT REGULATIONS.

REQUIREMENTS FOR CONSTRUCTION OF THIS UNIT LOAD SHALL CONSIST OF THIS DOCUMENT AND THE LATEST ISSUE OF MIL-STD-1323 (NAVY).

SIGNATURE *[Signature]* 5-1-91 DATE
 SIGNATURE *[Signature]* 5/1/91 DATE
FDA, WPNSTA EARLE
AIR SYSCOM BY DIRECTION

ORIGINATOR *[Signature]* 3/21/91 DATE

WPNSTA EARLE, NEW JERSEY

MIL-STD-1323-371 (NAVY)

PALLETIZING PROCEDURE

- (A) THREAD STRAPPING. ITEM 2. BETWEEN DECK WIRES OF PALLET. ITEM 1. AS SHOWN IN DETAIL A.
- (B) POSITION THE CONTAINERS ON THE PALLET DECK WITH EQUAL OVERHANG ON BOTH SIDES AND EQUAL UNDERHANG ON BOTH ENDS. HANDLES TO BE ORIENTED OUTWARDS ALONG THE 48 INCH PALLET EDGE.
- (C) POSITION STRAPPING, ITEM 2. OVER THE UNIT LOAD. AND INSERT THE PREFABRICATED END BATTEN ASSEMBLIES. ITEMS 6 AND 7. UNDER THE STRAPS. POSITION THE PLYWOOD RESTRAINER ON THE END BATTEN UNDER THE LID OF THE TOP CONTAINER. AS SHOWN. TENSION AND DOUBLE NOTCH THE SEAL. ITEM 4.
- (D) POSITION STRAPPING. ITEM 3. UNDER THE PALLET DECK AND OVER THE UNIT LOAD. INSERTING THE PREFABRICATED SIDE BATTEN ASSEMBLIES. ITEMS 8 AND 9. UNDER THE STRAPS. THE PLYWOOD RESTRAINER OF THE SIDE BATTEN SITS BETWEEN THE LATCHES. SNUG UNDER THE LID OF THE TOP CONTAINER. AND THE BATTEN AGAINST THE LID. AS SHOWN. TENSION AND DOUBLE NOTCH THE SEAL.
- (E) SECURE THE STRAPPING TO THE SIDE AND END BATTENS WITH STAPLES. ITEM 5.

MARKING:

IN ADDITION TO ANY SPECIAL MARKING REQUIRED BY CONTRACT OR ORDER, THE UNIT LOAD SHALL BE MARKED IN ACCORDANCE WITH MIL-STD-1323 (NAVY).

NOTES:

ALL MATERIALS SHALL BE IN ACCORDANCE WITH THE BASIC DOCUMENT, MIL-STD-1323 (NAVY).
DO NOT USE TYPE I STRAPPING WITH POWER MACHINES.

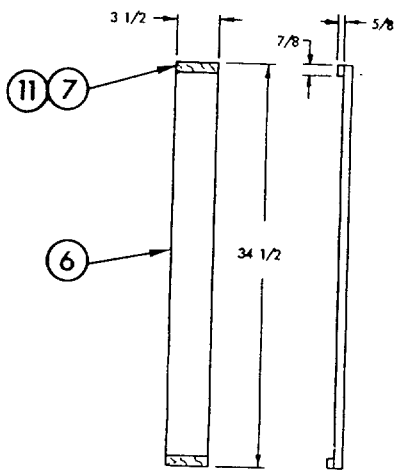
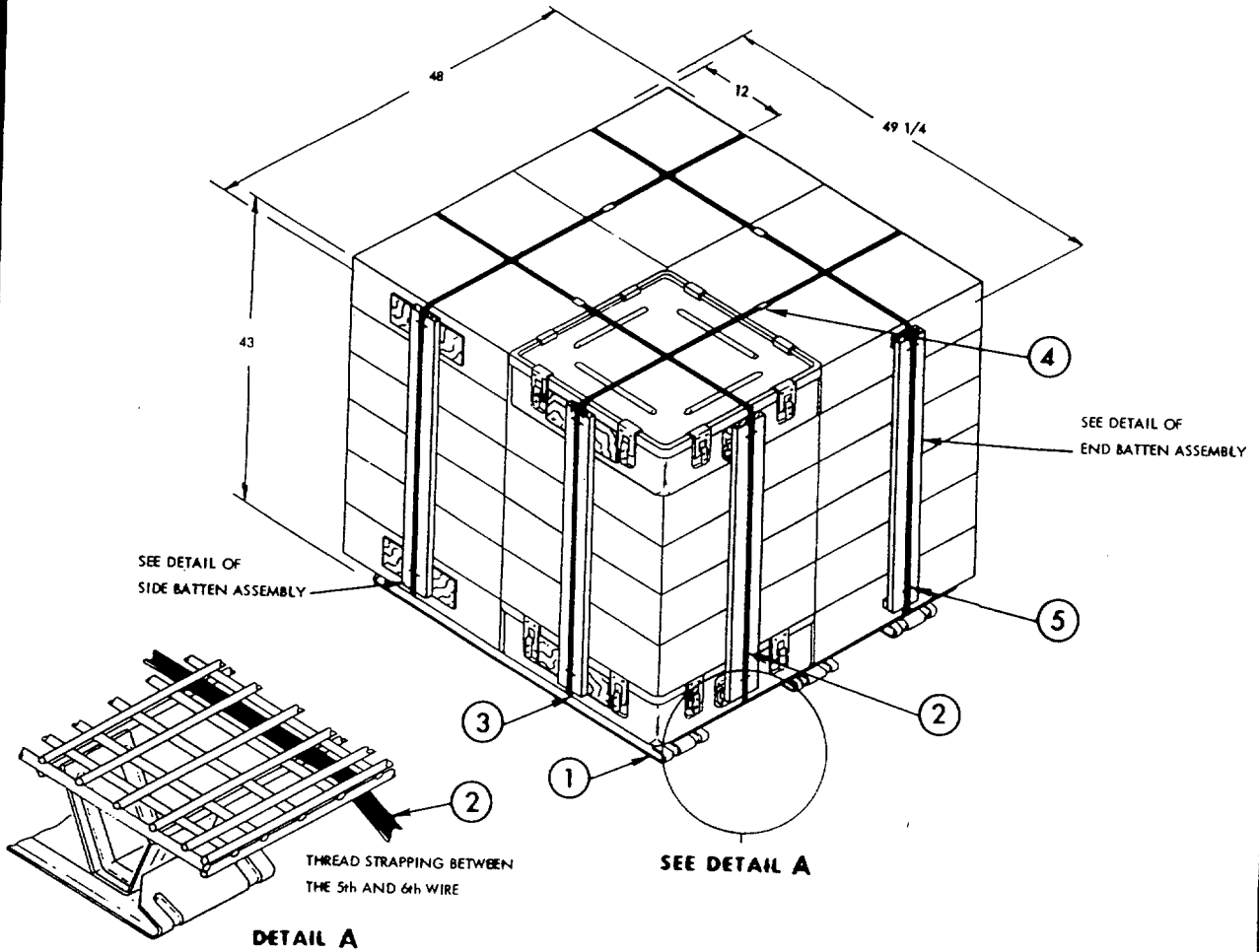
3 PER JOINT	11	NAIL, STANDARD BOX		30
3 PER JOINT	10	NAIL, STANDARD BOX		20
8	9	SIDE RESTRAINER		10-3/4 X 4 X 1/4
4	8	SIDE BATTEN		1 X 4 X 35-7/8
8	7	END RESTRAINER		3-1/2 X 7/8 X 5/8
4	6	END BATTEN		1 X 4 X 34-1/2
16	5	STAPLE		3/4
4	4	SEAL		3/4
2	3	STRAPPING.SEE NOTE		3/4 X .035 X 16 FT
2	2	STRAPPING.SEE NOTE		3/4 X .035 X 16 FT 6
1	1	PALLET, MK 3 MOD 0		40 X 48 X 4-3/4
REQ'D	ITEM	DESCRIPTION	MAT'L/DWG	DIMENSIONS

DEPALLETIZING PROCEDURES

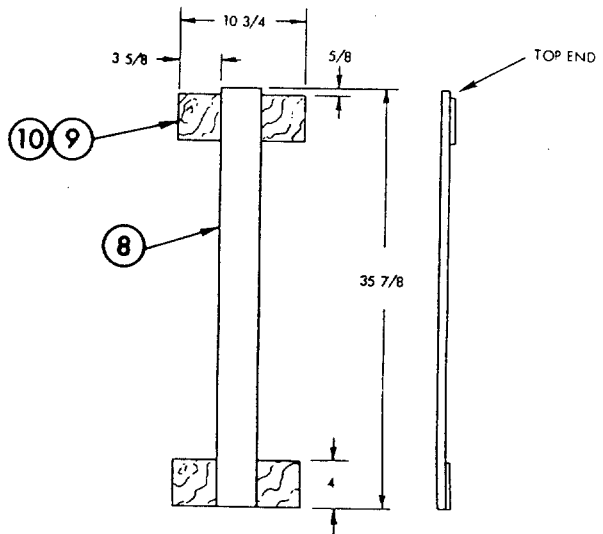
- (A) REMOVE STAPLES
(B) CUT AND REMOVE STRAPPING.
(C) REMOVE BATTEN ASSEMBLIES.
(D) REMOVE CONTAINERS.

LIST OF MATERIALS

MIL-STD-1323-371 (NAVY)



END BATTEN ASSEMBLY
(4 REQUIRED)



SIDE BATTEN ASSEMBLY
(4 REQUIRED)

