

**MILITARY STANDARD**  
**UNIT LOAD**  
**FOR DOMESTIC AND OVERSEAS SHIPMENT**  
**MK 23 MODS JATO ROCKET MOTORS**  
**IN WOOD ADAPTER**

**MIL-STD-1322-808**  
**(NAVY)**

30 APRIL 1993

SUPERSEDING  
 WR-53/808  
 14 MAY 1971

**UNIT LOAD DATA**

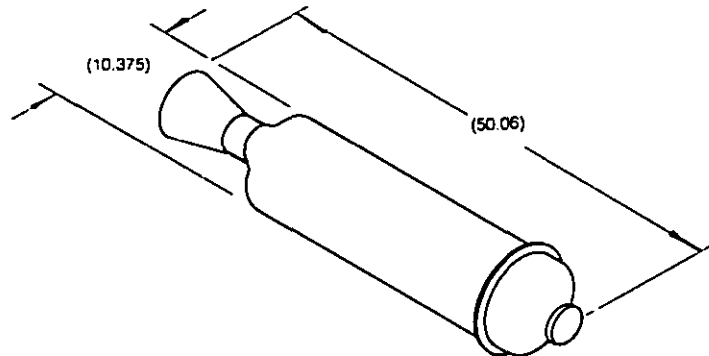
NUMBER OF ROCKET MOTORS PER UNIT LOAD \_\_\_\_\_ 6  
 GROSS WEIGHT OF ONE ROCKET MOTOR \_\_\_\_\_ 272 LBS.  
 WEIGHT OF PALLET \_\_\_\_\_ 90 LBS.  
 WEIGHT OF WOOD ADAPTER \_\_\_\_\_ 150 LBS.  
 WEIGHT OF STEEL STRAPPING \_\_\_\_\_ 12.6 LBS.  
 GROSS WEIGHT OF UNIT LOAD \_\_\_\_\_ 1,884 LBS.  $\Delta$   
 CUBE \_\_\_\_\_ 44.2 CU. FT.

$\Delta$  DO NOT USE FOR SHIPPING WEIGHT

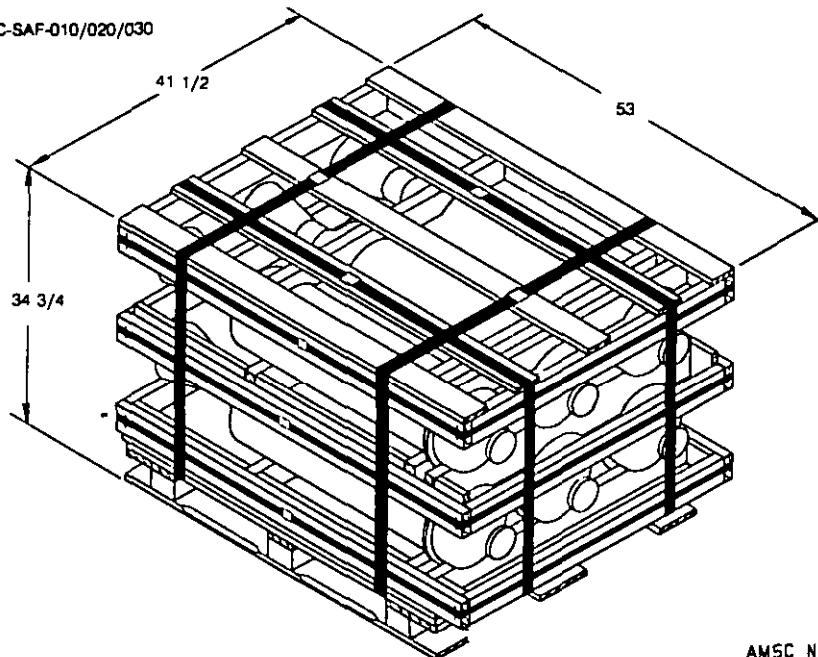
DO NOT STACK MORE THAN  
 5 UNIT LOADS HIGH IN STORAGE

FOR HAZARD CLASSIFICATION SEE SW020-AC-SAF-010/020/030

FOR UNIT LOAD QUALIFICATION  
 SEE NWSE TEST REPORT #TE AIR 03-05-71



MK 23 MODS JATO ROCKET MOTOR



AMSC NO. - N/A

**DISTRIBUTION STATEMENT A**  
 APPROVED FOR PUBLIC RELEASE:  
 DISTRIBUTION IS UNLIMITED.

**NOTES:**

1. UNLESS OTHERWISE SPECIFIED DIMENSIONS ARE IN INCHES.
2. FOR CROSS REFERENCE TO ASSOCIATED TRUCKLOADING, CONTAINERLOADING AND CARLOADING MILITARY STANDARDS, REFER TO INDEX TO STANDARDS, MIL-HDBK-236 (NAVY).

REV LTR	REVISION DESCRIPTION	DATE	TDA	SYS COM	CONTAINERLOADING AND CARLOADING MILITARY STANDARDS, REFER TO INDEX TO STANDARDS, MIL-HDBK-236 (NAVY).	FSC 8140
			APPROVAL			

THIS UNIT LOAD IS AUTHORIZED  
 AND RELEASED FOR DEPOT  
 HANDLING AND STORAGE AND FOR  
 SHIPMENT BY COMMON CARRIER.

REQUIREMENTS FOR CONSTRUCTION OF  
 THIS UNIT LOAD SHALL CONSIST OF  
 THIS DOCUMENT AND THE LATEST ISSUE  
 OF MIL-STD-1322 (NAVY).

Signature, TDA, WPNSTA EARLE *[Signature]* 92/5/27  
 DATE  
 Signature, NAVAIRSYSCOM BY DIRECTION *[Signature]* 93/5/25  
 DATE

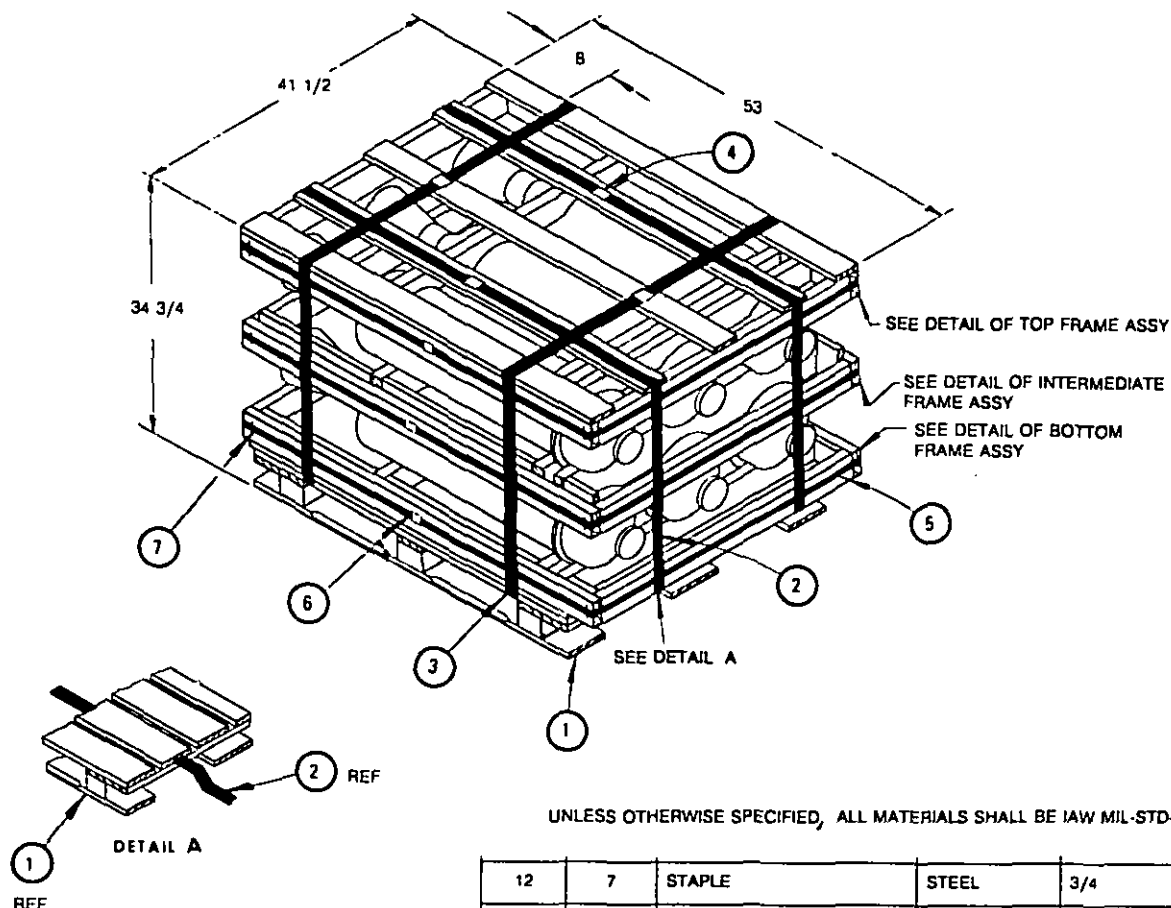
ORIGINATOR *[Signature]* 1-1-27  
 DATE  
 WPNSTA EARLE, NEW JERSEY  
 PAGE 1 OF 6

## PALLETIZING PROCEDURE

- (A) THREAD STRAPPING, ITEM 2, THROUGH SLOTS IN PALLET DECK, ITEM 1, AS SHOWN IN DETAIL A.
- (B) POSITION GIRTHWISE STRAPPING, ITEM 5, AROUND THE PREFABRICATED FRAME ASSEMBLIES, TENSION AND DOUBLE NOTCH SEAL, ITEM 6. SECURE STRAPPING WITH STAPLES, ITEM 7.
- (C) ALIGN DECK BOARD OF THE BOTTOM FRAME ASSEMBLY WITH ENDS OF THE PALLET DECK AND WITH EQUAL OVERHANG ON BOTH SIDES. SECURE THE DECK BOARD OF THE BOTTOM FRAME TO THE PALLET W/1-6d NAIL IN EACH POST ON THE POST TYPE PALLET OR 2-6d NAILS IN EACH STRINGER ON THE STRINGER TYPE PALLETS.
- (D) POSITION THREE MOTORS ON THE YOKES OF THE BOTTOM FRAME AS SHOWN.
- (E) PLACE THE PREFABRICATED INTERMEDIATE FRAME ASSEMBLY OVER THE MOTORS. ASCERTAIN THE PRESENCE OF THE GIRTHWISE STRAPPING.
- (F) POSITION THREE MOTORS ON THE YOKES OF THE INTERMEDIATE FRAME AS SHOWN.
- (G) PLACE THE PREFABRICATED TOP FRAME ASSEMBLY OVER THE MOTORS. ASCERTAIN PRESENCE OF GIRTHWISE STRAPPING.
- (H) POSITION STRAPPING, ITEM 2, AROUND THE UNIT LOAD AS SHOWN. TENSION AND DOUBLE NOTCH SEAL, ITEM 4.
- (I) POSITION STRAPPING, ITEM 3, UNDER THE PALLET DECK AND AROUND THE UNIT LOAD AS SHOWN. TENSION AND DOUBLE NOTCH SEAL, ITEM 4.

### MARKING:

IN ADDITION TO ANY SPECIAL MARKING REQUIRED BY CONTRACT OR ORDER, THE UNIT LOAD SHALL BE MARKED IN ACCORDANCE WITH MIL-STD-129.



UNLESS OTHERWISE SPECIFIED, ALL MATERIALS SHALL BE IAW MIL-STD-1322

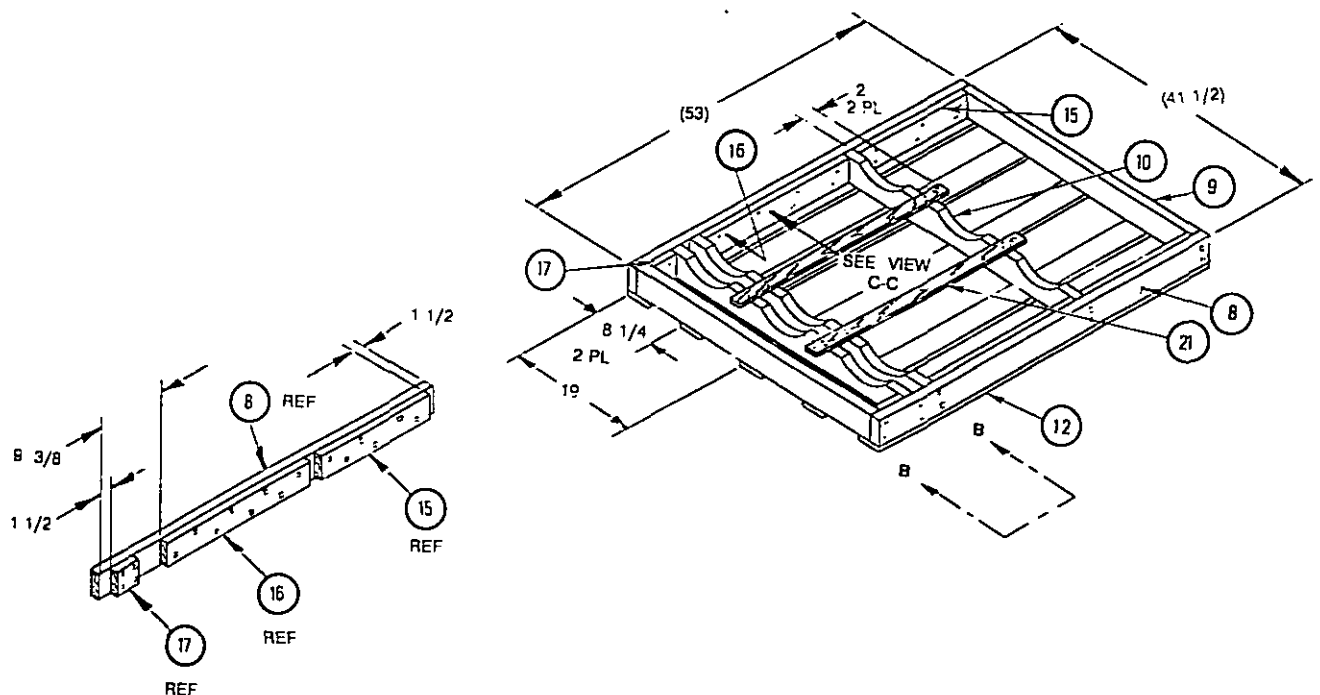
## DEPALLETIZING PROCEDURE

- (a) CUT AND REMOVE LONGITUDINAL & LATERAL STRAPPING.
- (b) REMOVE TOP FRAME.
- (c) REMOVE THE TOP LAYER OF MOTORS.
- (d) REMOVE INTERMEDIATE FRAME.
- (e) REMOVE THE BOTTOM LAYER OF MOTORS.
- (f) REMOVE NAILS USED TO SECURE BOTTOM FRAME TO PALLET.
- (g) REMOVE BOTTOM FRAME FROM PALLET.

12	7	STAPLE	STEEL	3/4
3	6	SEAL	STEEL	FOR 3/4 STRAPPING
3	5	STRAPPING, GIRTHWISE	STEEL	3/4 X .035 X 16 FT 6
4	4	SEAL	STEEL	FOR 1 1/4 STRAPPING
2	3	STRAPPING, LATERAL	STEEL	1 1/4 X .035 X 12 FT 6
2	2	STRAPPING, LONGITUDINAL	STEEL	1 1/4 X .035 X 14 FT 6
1	1	PALLET MIL-P-15011	WOOD	40 X 48 X 5 1/2
REQ	ITEM	DESCRIPTION	MAT'L/DWG	DIMENSIONS

LIST OF MATERIALS

## TOP FRAME ASSEMBLY

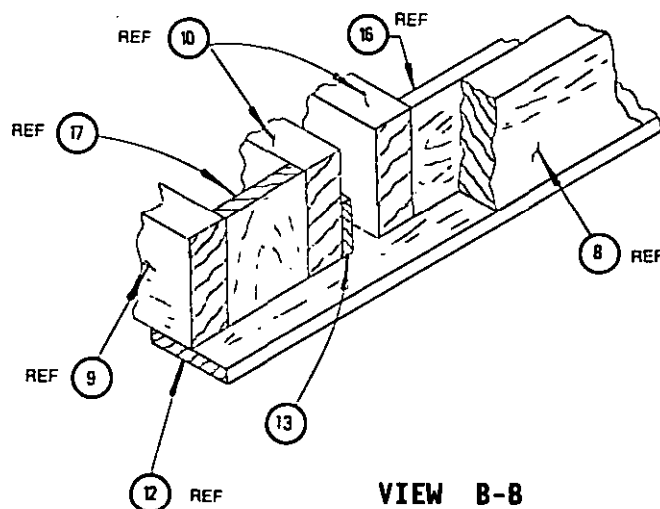


**VIEW C-C**  
(2 REQUIRED)

## FRAME CONSTRUCTION

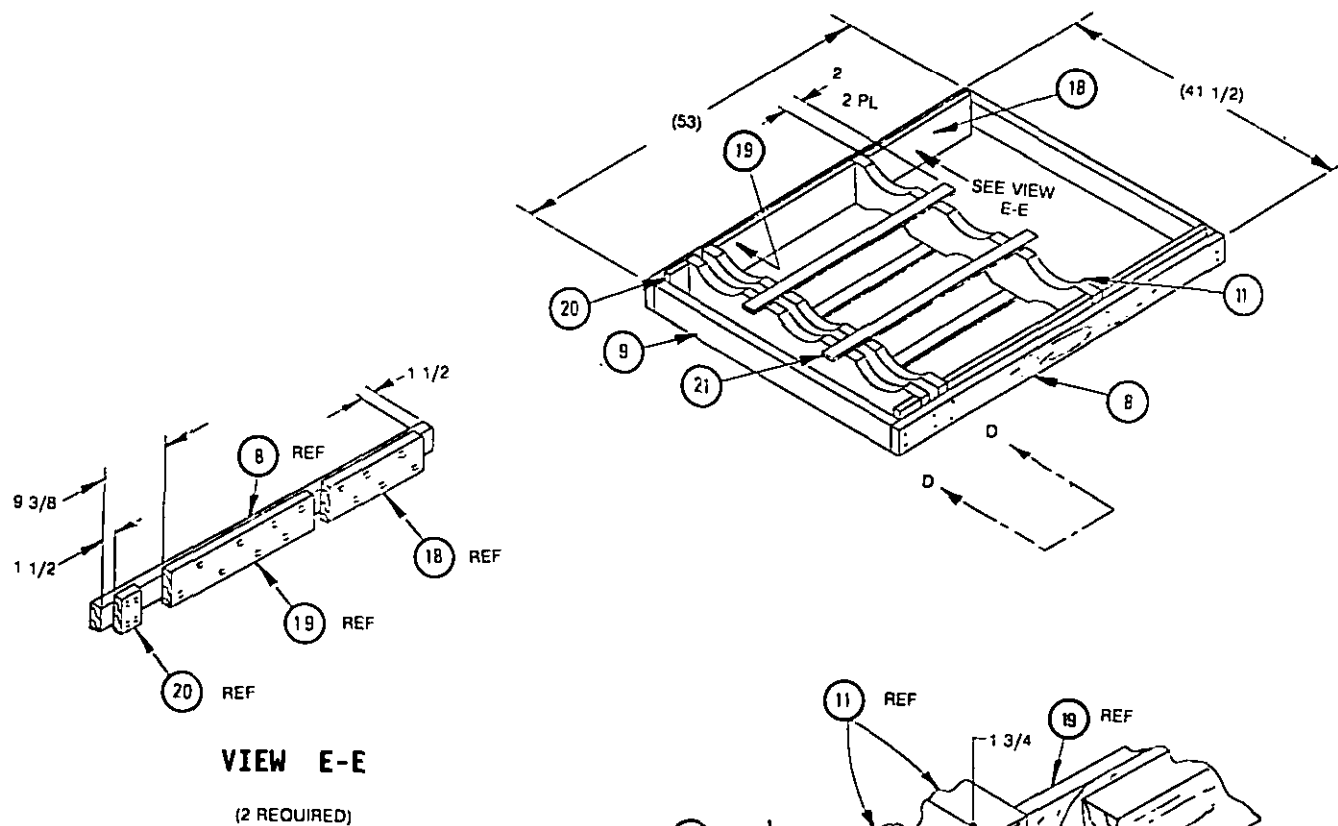
NAIL THE FOLLOWING ITEMS AS FOLLOWS:

1. ITEM 17 TO ITEM 8 WITH 4-6d NAILS.  
ITEM 16 TO ITEM 8 WITH 8-6d NAILS STAGGERED.  
ITEM 15 TO ITEM 8 WITH 6-6d NAILS STAGGERED.  
ABOVE NAILING PROCEDURES TO BE DONE IN 2 PLACES  
USING LOCATING DIMENSIONS AS SHOWN IN VIEW C-C.
2. ITEM 8 TO ITEM 9 WITH 2-16d NAILS/JOINT 4PL.
3. ITEM 13 TO 1 PIECE OF ITEM 10 WITH 12-6d NAILS  
STAGGERED. LOCATE ITEM 13 AS SHOWN IN VIEW B-B.
4. PLACE ITEM 10 WITH ATTACHED ITEM 13 ADJACENT TO ITEM 17  
AND THE OTHER TWO ITEM 10'S ADJACENT TO ITEMS 15 & 16  
AS SHOWN. SECURE IN PLACE BY NAILING ITEM 8 TO ITEM 10  
WITH 2-16d NAILS/JOINT 6PL.
5. ITEM 12 TO ITEMS 9 & 10 WITH 2-8d NAILS/JOINT.
6. ITEM 21 TO ITEM 10 WITH 2-6d NAILS/JOINT IN LOCATION AS  
SHOWN 3 PL.



**VIEW B-B**

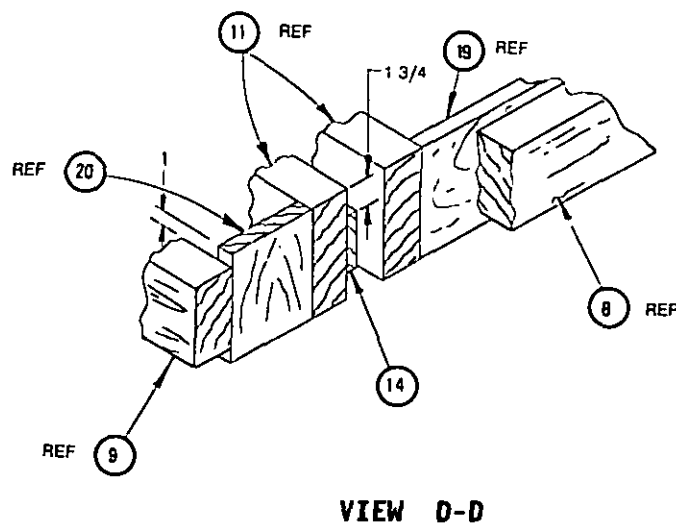
## INTERMEDIATE FRAME ASSEMBLY



## FRAME CONSTRUCTION

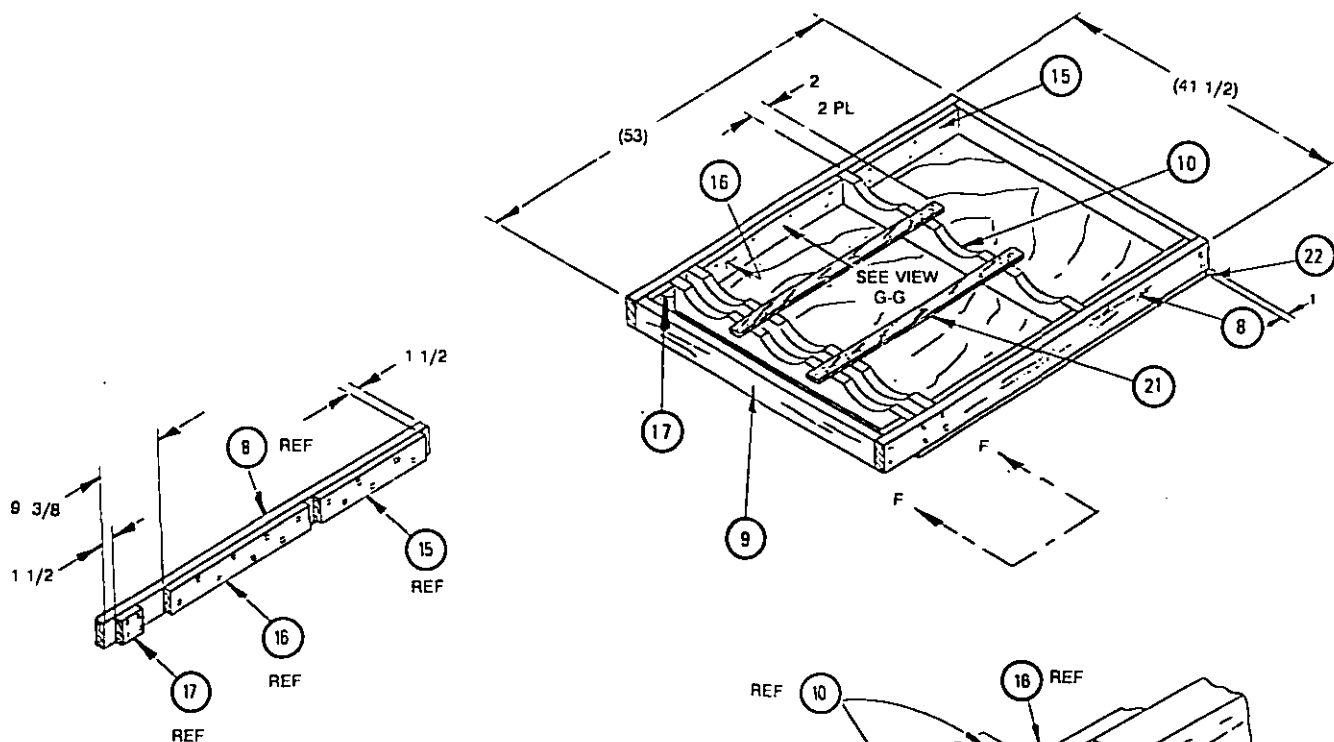
NAIL THE FOLLOWING ITEMS AS FOLLOWS:

1. ITEM 20 TO ITEM 8 WITH 4-6d NAILS.  
ITEM 19 TO ITEM 8 WITH 8-6d NAILS STAGGERED.  
ITEM 18 TO ITEM 8 WITH 8-6d NAILS STAGGERED.  
ABOVE NAILING PROCEDURES TO BE DONE IN 2 PLACES  
USING LOCATING DIMENSIONS AS SHOWN IN VIEW E-E
2. ITEM 8 TO ITEM 9 WITH 2-16d NAILS/JOINT 4PL.
3. ITEM 14 TO 1 PIECE OF ITEM 11 WITH 12-6d NAILS  
STAGGERED. LOCATE ITEM 14 AS SHOWN IN VIEW D-D.
4. PLACE ITEM 11 WITH ATTACHED ITEM 14 ADJACENT TO ITEM 20  
AND THE OTHER TWO ITEM 11'S ADJACENT TO ITEMS 19 & 18  
AS SHOWN. SECURE IN PLACE BY NAILING ITEM 8 TO ITEM 11  
WITH 2-16d NAILS/JOINT 6PL.
5. ITEM 21 TO ITEM 11 WITH 2-8d NAILS/JOINT IN LOCATION AS  
SHOWN 3 PL.



VIEW D-D

## BOTTOM FRAME ASSEMBLY



**VIEW G-G**

(2 REQUIRED)

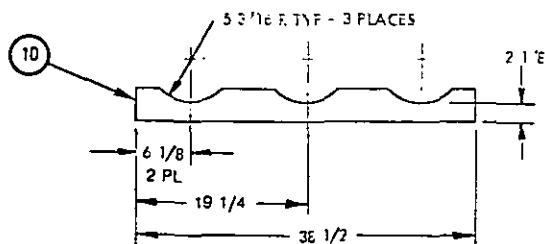
### FRAME CONSTRUCTION

NAIL THE FOLLOWING ITEMS AS FOLLOWS:

1. ITEM 17 TO ITEM 8 WITH 4-8d NAILS.  
ITEM 16 TO ITEM 8 WITH 8-8d NAILS STAGGERED.  
ITEM 15 TO ITEM 8 WITH 8-6d NAILS STAGGERED.  
ABOVE NAILING PROCEDURES TO BE DONE IN 2 PLACES  
USING LOCATING DIMENSIONS AS SHOWN IN VIEW G-G
2. ITEM 8 TO ITEM 9 WITH 2-16d NAILS/JOINT 4PL.
3. ITEM 13 TO 1 PIECE OF ITEM 10 WITH 12-8d NAILS  
STAGGERED. LOCATE ITEM 13 AS SHOWN IN VIEW F-F.
4. PLACE ITEM 10 WITH ATTACHED ITEM 13 ADJACENT TO ITEM 17  
AND THE OTHER TWO ITEM 10'S ADJACENT TO ITEMS 15 & 16  
AS SHOWN. SECURE IN PLACE BY NAILING ITEM 8 TO ITEM 10  
WITH 2-16d NAILS/JOINT 6PL.
5. ITEM 22 TO ITEMS 8 & 10 WITH 4-8d NAILS STAGGERED AT  
LOCATION SHOWN.
6. ITEM 21 TO ITEM 10 WITH 2-6d NAILS/JOINT IN LOCATION AS  
SHOWN 3 PL.

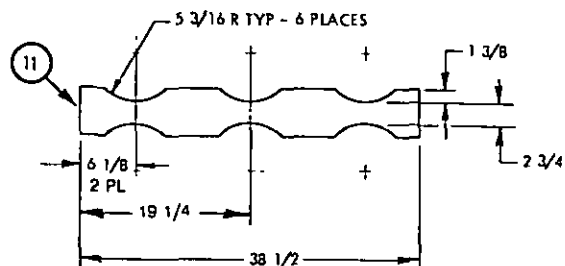
**VIEW F-F**

## FRAME DETAILS



YOKE-TOP &amp; BOTTOM

(8 REQUIRED)



YOKE-INTERMEDIATE

(3 REQUIRED)

1	22	DECK BOARD	PLYWOOD	48 X 41 1/2 X 3/4
8	21	RESTRAINERS	PLYWOOD	33 3/8 X 1 3/4 X 1/2
2	20	RESTRAINERS, INTERMEDIATE FRAME	WOOD	1 X 6 X 3 3/8
2	19	RESTRAINERS, INTERMEDIATE FRAME	WOOD	1 X 6 X 23 3/8
2	18	RESTRAINERS, INTERMEDIATE FRAME	WOOD	1 X 6 X 17 1/4
4	17	RESTRAINERS, TOP & BOTTOM FRAME	WOOD	1 X 4 X 3 3/8
4	16	RESTRAINERS, TOP & BOTTOM FRAME	WOOD	1 X 4 X 23 3/8
4	15	RESTRAINERS, TOP & BOTTOM FRAME	WOOD	1 X 4 X 17 1/4
1	14	SPACER	PLYWOOD	38 1/2 X 2 X 1/2
2	13	SPACER	PLYWOOD	38 1/2 X 1 3/4 X 1/2
5	12	TOP BATTENS	WOOD	1 X 4 X 53
3	11	INTERMEDIATE YOKES	WOOD	2 X 6 X 38 1/2
6	10	TOP & BOTTOM YOKES	WOOD	2 X 4 X 38 1/2
6	9	END PIECES	WOOD	2 X 4 X 38 1/2
6	8	SIDE PIECES	WOOD	2 X 4 X 53
REQ	ITEM	DESCRIPTION	MAT'L/DWG	DIMENSIONS

## LIST OF MATERIALS

REVIEW ACTIVITY:

NAVY-AS,

PREPARING ACTIVITY:

NAVY-OS

(PROJECT NO. 8140-0100)