

MILITARY STANDARD

MIL-STD-1322-111
(NAVY)

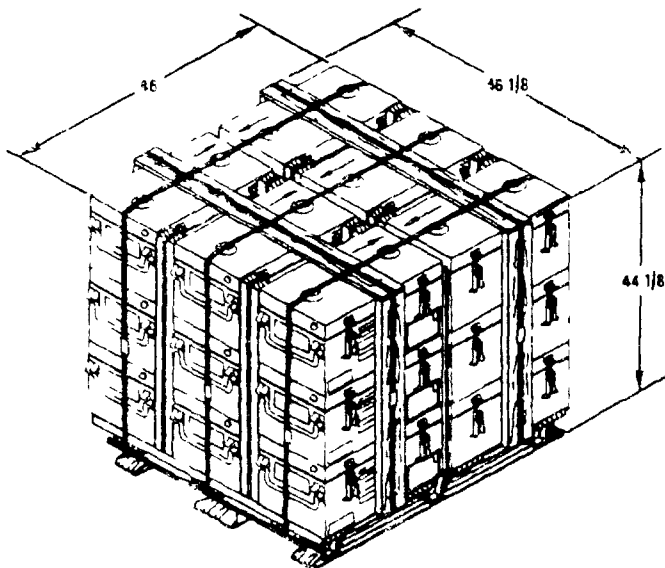
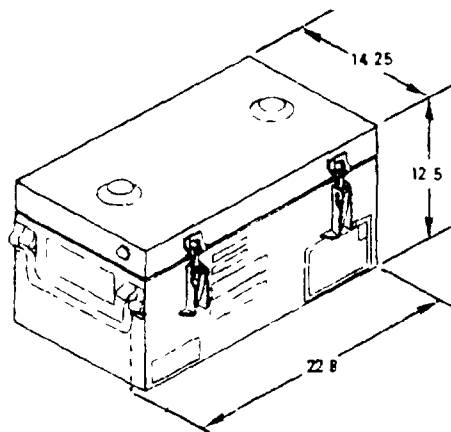
UNIT LOAD FOR DOMESTIC AND OVERSEAS SHIPMENT AMRAAM CONTROL SECTION IN CONTAINER, CNU-402/E OR AMRAAM WARHEAD SECTION IN CONTAINER, CNU-403/E

29 JULY 1991

UNIT LOAD DATA

CONTAINER	CNU-402/E	CNU-403/E
NUMBER OF UNITS PER CONTAINER	1	1
NUMBER OF CONTAINERS PER UNIT LOAD	18	18
GROSS WEIGHT OF CONTAINER (LBS)	634	789
GROSS WEIGHT OF STEEL PALLET (LBS)	72	72
WEIGHT OF WOOD AND STEEL STRAPPING (LBS)	175	175
GROSS WEIGHT OF UNIT LOAD (LBS) Δ	1388	1667
VOLUME (CU FT)	55.1	55.1

Δ DO NOT USE FOR SHIPPING WEIGHT
DO NOT STACK MORE THAN 4 UNIT LOADS HIGH IN STORAGE
FOR HAZARD CLASSIFICATIONS SEE NAVSEA OP 2165



AMSC NO - N/A

DISTRIBUTION STATEMENT A
APPROVED FOR PUBLIC RELEASE
DISTRIBUTION IS UNLIMITED

NOTE
UNLESS OTHERWISE SPECIFIED DIMENSIONS ARE IN INCHES
FOR CROSS REFERENCE TO ASSOCIATED TRUCKLOADING,
CONTAINERLOADING AND CARLOADING MILITARY
STANDARDS REFER TO INDEX TO STANDARDS
MIL-HDBK-236 (NAVY)

FSC 8140

REV	REVISION DESCRIPTION	DATE	TDA	SYSCOM
1	OR		APPROVAL	

THIS UNIT LOAD IS AUTHORIZED AND RELEASED FOR SHIPPING HANDLING, STORAGE AND TRANSFER-AT-SEA. IT MAY ALSO BE USED FOR DOMESTIC SHIPMENT IN COMPLIANCE WITH DOT REGULATIONS.

REQUIREMENTS FOR CONSTRUCTION OF THIS UNIT LOAD SHALL CONSIST OF THIS DOCUMENT AND THE LATEST ISSUE OF MIL-STD-1322 (NAVY)

SIGNATURE: *[Signature]* DATE: 7/19/91
TDA: [Signature] DATE: [Signature]

ORIGINATOR: *[Signature]* DATE: 7/29/91
WYNSTA EARLE, NEW JERSEY

PALLETIZING PROCEDURE

1. BRING LONGITUDINAL STRAPS, ITEM 2 BETWEEN SECOND AND THIRD LAYERS OF THE PALLET DECK AS SHOWN IN DETAIL B. THREAD CENTER LONGITUDINAL STRAP, ITEM 2 BETWEEN NINTH AND TENTH LAYERS OF PALLET DECK AS SHOWN IN DETAIL B.
2. POSITION FLOOR ASSEMBLIES (SEE DETAIL D) ON PALLET DECK AS SHOWN IN DETAIL C. THERE SHALL BE EQUAL OVERHUNG ON ALL FOUR SIDES OF THE PALLET.
3. POSITION VERTICAL CONTAINERS WITH SEPARATOR ASSEMBLIES ON THE PALLET DECK AS SHOWN IN DETAILS A AND C. DETAIL F SHOWS SEPARATOR POSITION BY INSTRUCTION.
4. POSITION PROTECTOR ASSEMBLIES, DETAIL E OVER THE UNIT LOAD AS SHOWN IN DETAIL A.
5. BRING LONGITUDINAL STRAPS OVER THE UNIT LOAD TENSION AND DOUBLE NOTCH THE SEALS AS SHOWN IN DETAIL A.
6. FEED LATERAL STRAPS UNDER THE PALLET DECK AND OVER THE UNIT LOAD AS SHOWN IN DETAIL A. TENSION AND DOUBLE NOTCH THE SEALS.
7. SECURE THE STRAPPING ITEMS 2 AND 3 TO THE PROTECTOR ASSEMBLIES WITH STAPLES, ITEM 12, AS SHOWN IN DETAIL A.
8. PARTIAL UNIT LOADS OF SIX OR FIFTIVE CONTAINERS ONLY ARE PERMITTED. EXTRA CONTAINERS MUST BE TREATED AS LOOSE ITEMS.
9. MIXED UNIT LOADS OF CNU-402/F AND CNU-403/E CONTAINERS ARE PERMITTED UNDER THE FOLLOWING CONDITIONS:
 - A) CNU-402/E AND CNU-403/E CONTAINERS ARE NOT MIXED WITHIN THE SAME LAYER.
 - B) LAYERS OF CNU-403/E CONTAINERS ARE LOADED BELOW LAYERS OF CNU-402/E CONTAINERS.

DEPALLETIZING PROCEDURE

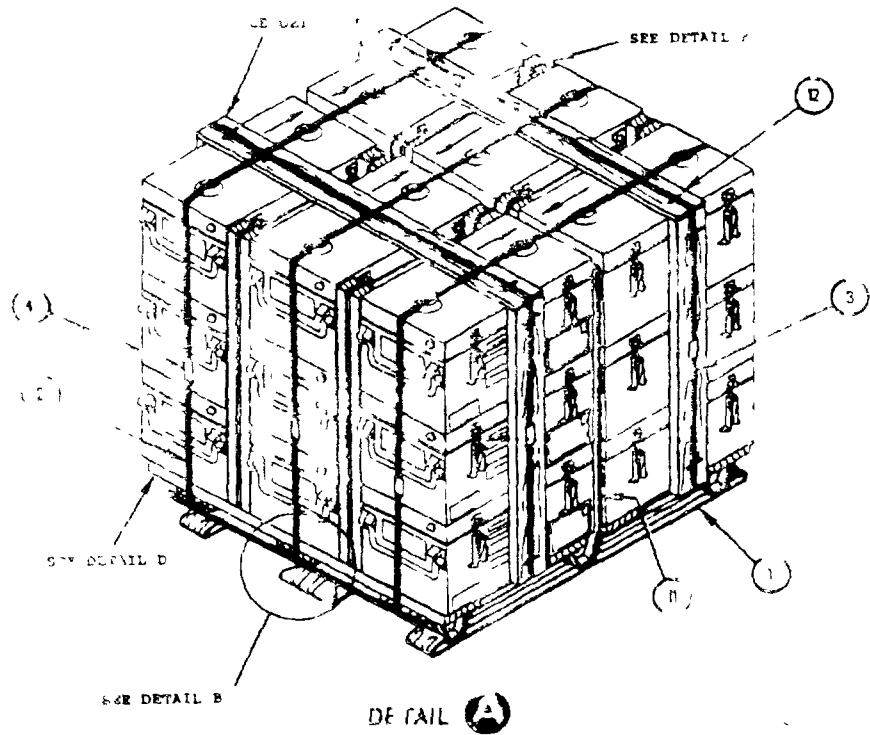
1. REMOVE STAPLES
2. CUT AND REMOVE STRAPPING
3. REMOVE PROTECTOR BOARD ASSEMBLIES
4. REMOVE CONTAINERS AND SEPARATOR ASSEMBLIES
5. REMOVE FLOOR ASSEMBLIES

NOTES

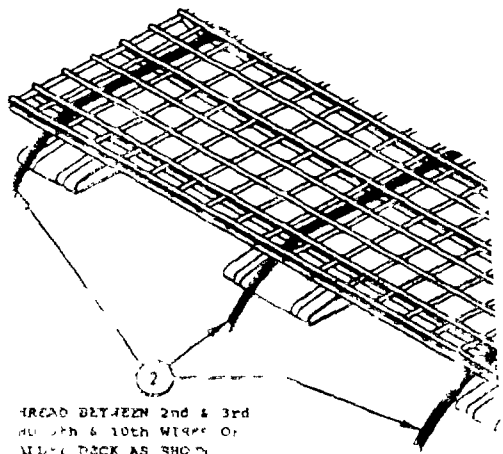
1. UNLESS OTHERWISE SPECIFIED, ALL MATERIALS SHALL BE IN ACCORDANCE WITH MIL-STD-1322 (NAVY).
2. DO NOT USE TYPE I STRAPPING WITH POWER MACHINES.
3. ITEM 7 CAN BE MADE FROM 2 X 4 STOCK CUT DOWN IN WIDTH TO SIZE.

1	11	SEPARATOR	PLYWOOD	3/8 X 42 X 36
2	10	PROTECTOR BOARD	WOOD	2 X 6 X 46 1/2
4	9	SIDE PROTECTOR	WOOD	2 X 6 X 36
12	8	CROSS PIECE	PLYWOOD	3/8 X 6 X 21
16	7	VERTICAL	SEE NOTE 3	2 X 2 5/8 X 36
6	6	CROSS PIECE	WOOD	1 X 6 X 21
4	5	PLANK	WOOD	2 X 6 X 43
3	4	STRAP SEAL	STEEL	3/4 SIZE
2	3	STRAP, LATERAL	STEEL	3/4 X 035 X 16 FT
3	2	STRAP LONGITUDINAL	STEEL	3/4 X 035 X 16 FT
1	1	PALLET, MK 13 MOD 1	DWG 2645217	36 X 45 1/2 X 4 3/4
9	ITEM	DESCRIPTION	MAT'L/DWG	DIMENSIONS

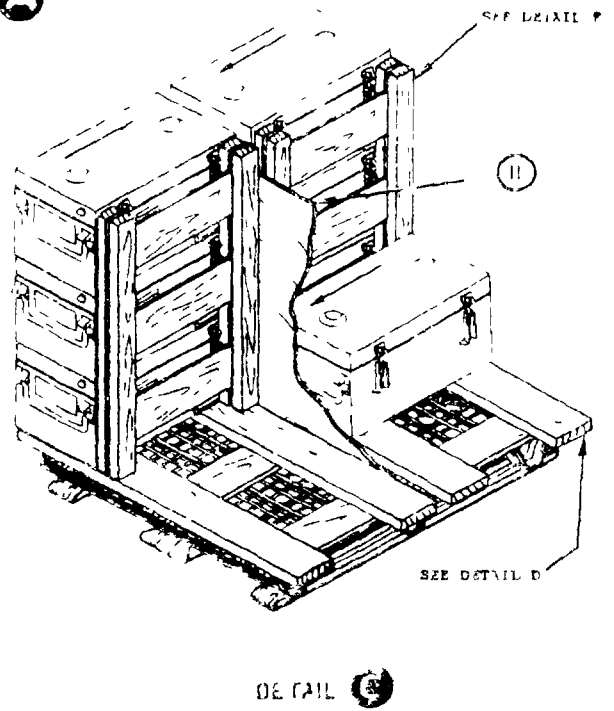
LIST OF MATERIALS



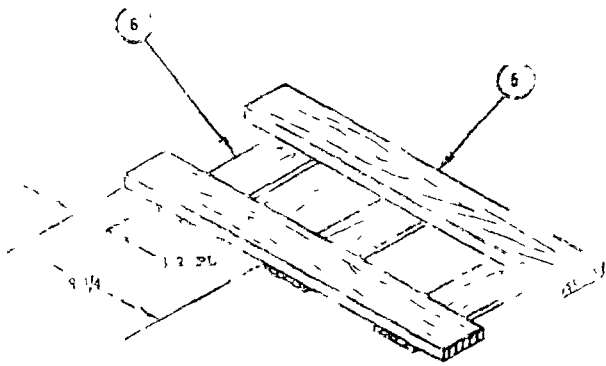
ARROWS INDICATE FORWARD END OF COMPONENTS



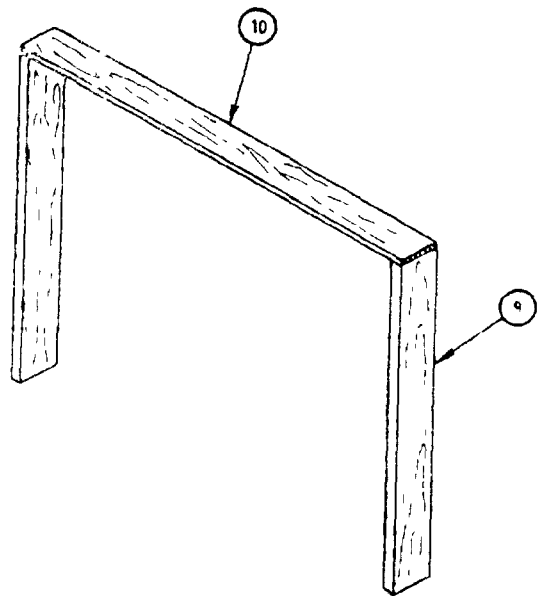
SPACING BETWEEN 2nd & 3rd ROWS OF 10th WIRE OF GRID AS SHOWN



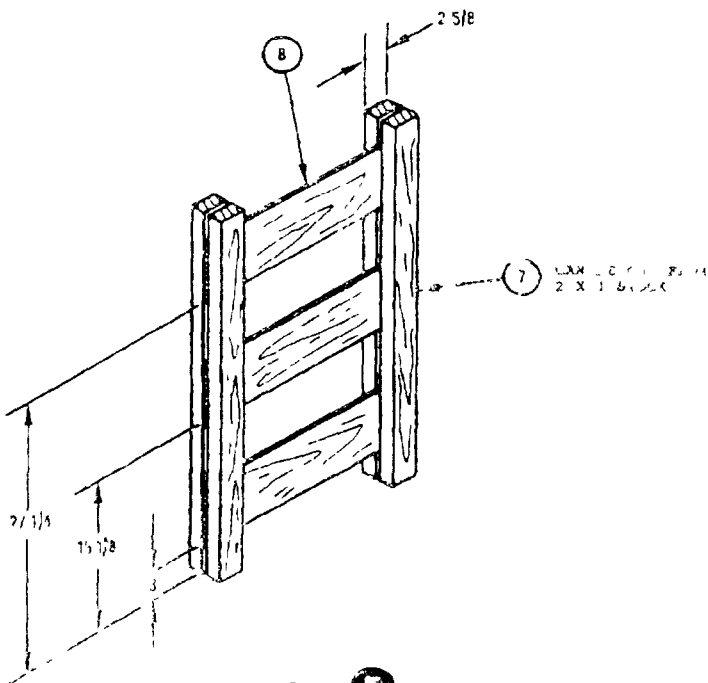
07 13



DETAIL D
FLOOR ASSEMBLY
 ASSEMBLE W/10 NAILS



DETAIL E
PROTECTOR ASSEMBLY
 NAIL ITEM TO ITEM 9
 W/2-6D NAILS PER JOINT



DETAIL F
VERTICAL ASSEMBLY
 ASSEMBLE W/ 3 NAILS

POSTAGE AND FEES PAID



OFFICIAL BUSINESS
PENALTY FOR PRIVATE USE \$300

Commanding Officer
Naval Weapons Station Earle
Attn: Code 502
Colts Neck, New Jersey 07722 5000

FOLD

STANDARDIZATION DOCUMENT IMPROVEMENT PROPOSAL

OMB Approval
No. 22 R255

INSTRUCTIONS: The purpose of this form is to solicit beneficial comments which will help achieve procurement of suitable products at the lowest possible cost, minimum delay, or will otherwise enhance use of the document. DoD contractor, government activities, or manufacturers/vendors who are prospective suppliers of the product are invited to submit comments to the government. Fold on lines on reverse side, staple in corner, and send to preparing activity. Comments submitted on this form do not constitute or imply authorization to waive any portion of the referenced document(s) or to amend contractual requirements. Attach any pertinent data which may be of use in improving this document. If there are additional papers, attach to form and place both in an envelope addressed to preparing activity.

DOCUMENT IDENTIFIER AND TITLE

MIL-STD-1322-111 - AMRAAM Control Section/Inthead in CNU-402/E and CNU-403/E

NAME OF ORGANIZATION AND ADDRESS

CONTRACT NUMBER

MATERIAL PROCURED UNDER A

DIRECT GOVERNMENT CONTRACT SUBCONTRACT

1. HAS ANY PART OF THE DOCUMENT CREATED PROBLEMS OR REQUIRED INTERPRETATION IN PROCUREMENT USE?

A. GIVE PARAGRAPH NUMBER AND WORDING

B. RECOMMENDATIONS FOR CORRECTING THE DEFICIENCIES

2. COMMENTS ON ANY DOCUMENT REQUIREMENT CONSIDERED TOO RIGID

3. IS THE DOCUMENT RESTRICTIVE?

YES NO (If "Yes", in what way?)

4. REMARKS

FORM PREPARED BY: (Print name and title of preparer)

TELEPHONE NO.

DD FORM 1322-111

014-100