

# MILITARY STANDARD

MIL-STD-1320-280

## TRUCKLOADING

(NAVY)

### ALPHA CONFIGURED MINE, MK 56 MOD 0 (WITH FAIRING MK 21 MOD 0 AND PARACHUTE PACK WITH FINS) IN MINE CRATE MK 56 MOD 0

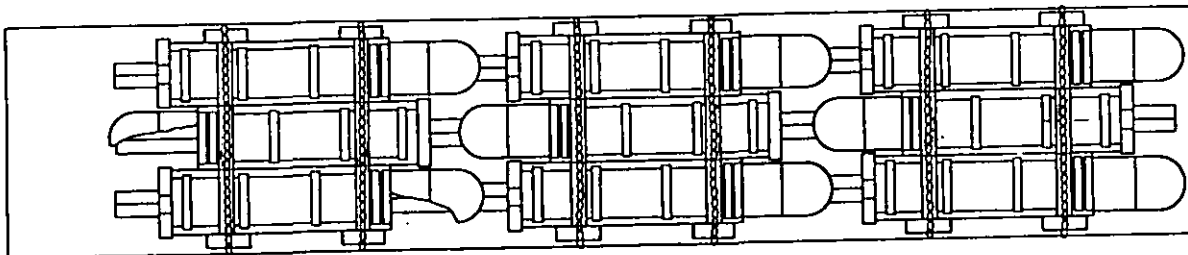
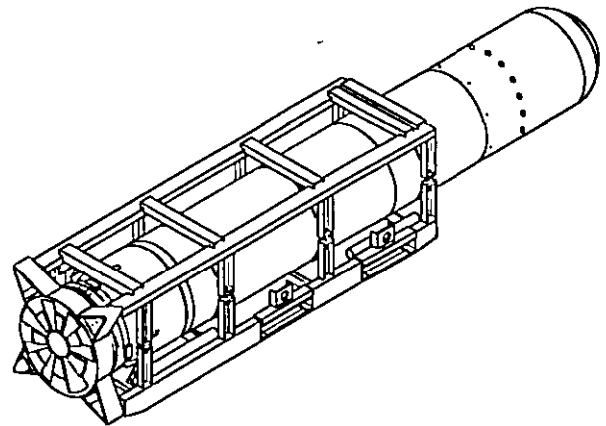
8 OCTOBER 1993

#### CRATED MINE DATA

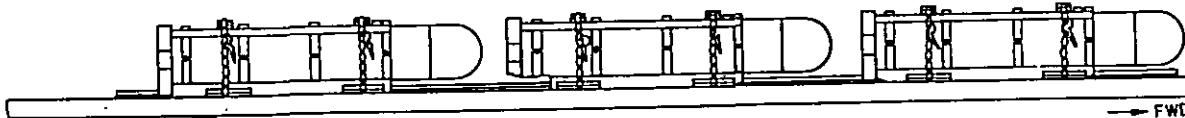
LENGTH ..... 136-1/8  
 WIDTH ..... 27  
 HEIGHT ..... 29-1/2  
 GROSS WEIGHT (APPROX.) ..... 2,290 LBS ♦  
 CUBE ..... 62.7 CUFT

♦ DO NOT USE FOR SHIPPING WEIGHT.

FOR HAZARD CLASSIFICATION SEE SWO20-AC-SAF-010/020/030.



TOP VIEW



SIDE VIEW

→ FWD



#### NOTE

FOR REASONS OF CLARITY,  
 NOSE ENDS OF MINES IN  
 CENTER OF TRAILER ARE NOT  
 SHOWN IN SIDE VIEW.

AMSC NO. - N/A

**DISTRIBUTION STATEMENT A**  
 APPROVED FOR PUBLIC RELEASE;  
 DISTRIBUTION IS UNLIMITED.

#### NOTES:

- UNLESS OTHERWISE SPECIFIED, DIMENSIONS ARE IN INCHES.
- FOR CROSS REFERENCE TO ASSOCIATED PALLETIZING, CONTAINERLOADING AND CARLOADING MILITARY STANDARDS, REFER TO INDEX TO STANDARDS, MIL-HDBK-235 (NAVY).

FSC 8140

REV LTR	REVISION DESCRIPTION	DATE	TDA	SYSCOM
			APPROVAL	

AUTHORIZED AND RELEASED  
 FOR HIGHWAY SHIPMENT ONLY.

*[Signature]* 10/8/93  
 SIGNATURE TDA, WPNSTA EARLE DATE  
*[Signature]* 10/8/93  
 SIGNATURE NAVSEASYSKOM BY DIRECTION DATE

ORIGINATOR *[Signature]* 10/10/93  
 DATE

WPNSTA EARLE, NEW JERSEY

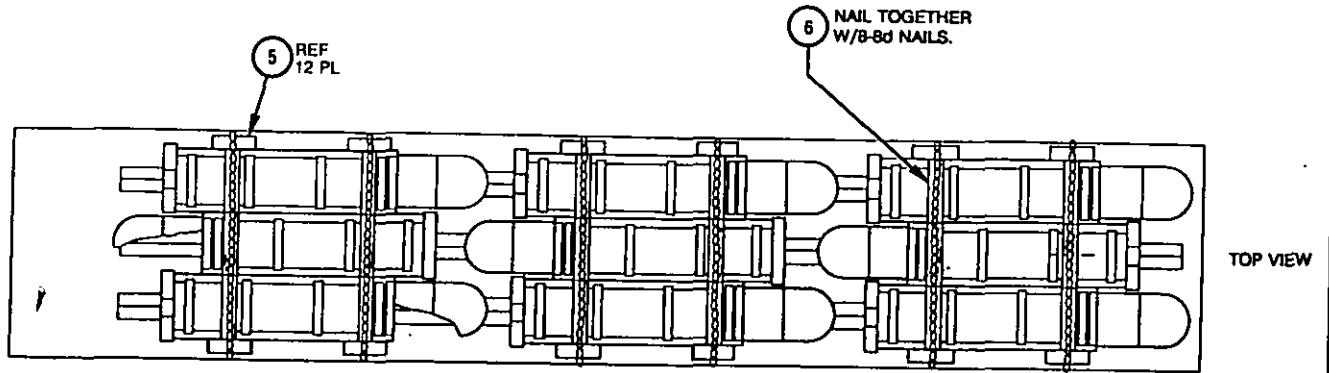
## MIL-STD-1320-280 (NAVY)

GENERAL NOTES:

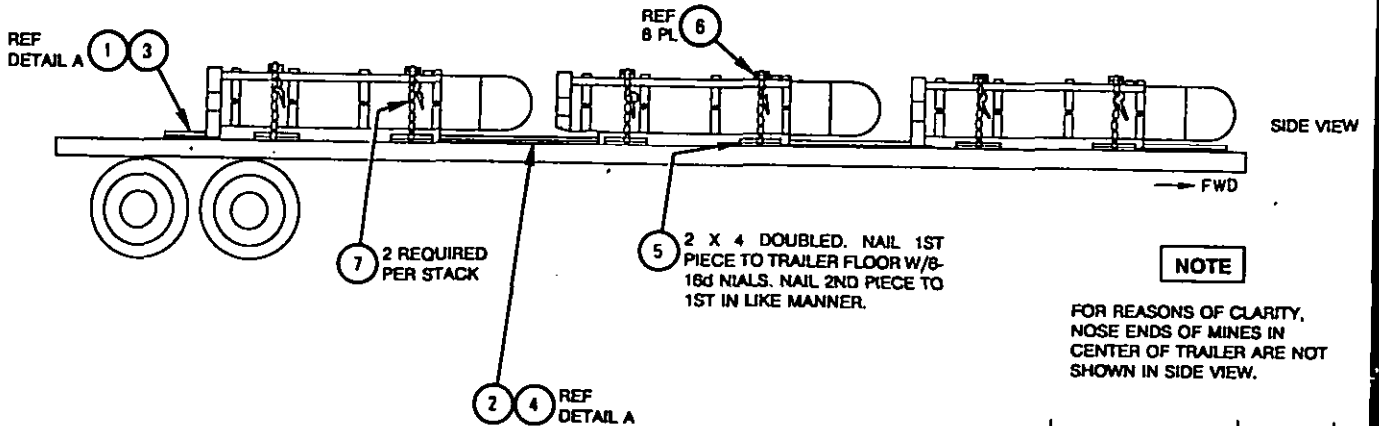
1. THIS DOCUMENT GIVES DETAILED INSTRUCTIONS FOR TRUCKLOADING THE MK 56 MOD 0 ALPHA CONFIGURED MINE IN THE MK 56 MOD 0 MINE CRATE.
2. THE PROCEDURES DESCRIBED HEREIN ARE INTENDED FOR FLATBED TRAILERS OR TRUCKS. DO NOT USE TRAILERS OR TRUCKS WITH ALL METAL FLOORS.
3. CHAINS AND STEEL STRAPPING MAY BE USED INTERCHANGEABLY ON A ONE-TO-ONE BASIS FOR TIEDOWNS.
4. STEEL STRAPPING USED AS TIEDOWNS SHALL BE 2 X .050 AND SHALL CONFORM TO AND BE APPLIED AS SPECIFIED IN THE GENERAL TRUCKLOADING DOCUMENT, MIL-STD-1320 (NAVY).
5. CHAINS, FITTINGS, AND LOAD BINDERS SHALL CONFORM TO AND BE APPLIED AS SPECIFIED IN THE GENERAL TRUCKLOADING DOCUMENT, MIL-STD-1320 (NAVY), EXCEPT THAT THE CHAIN/GRAB HOOKS SHALL BE ATTACHED TO THE STAKE POCKETS (NOT AROUND THE RUB RAIL).
6. PROTECTOR BOARDS (DOUBLED 2 X 6'S) SHALL BE USED UNDER THE TIEDOWNS. STEEL STRAPS SHALL BE SECURED TO THE PROTECTOR BOARDS USING 2-INCH STRAPPING STAPLES. WHEN USING CHAIN, THE CHAINS SHALL BE SECURED TO THE PROTECTOR BOARD BY DRIVING A 10d NAIL THROUGH THE CHAIN LINK AND CLINCHING THE NAIL OVER THE CHAIN. FIVE STAPLES/NAIIS SHALL BE USED FOR EACH TIEDOWN.
7. THE MAXIMUM NUMBER OF MINES THAT CAN BE LOADED ONTO A TRAILER IS AS FOLLOWS.
 

42 FT AND LONGER TRAILERS .....	9 UNIT LOADS
29 THRU 41 FT TRAILERS .....	6 UNIT LOADS
16 THRU 28 FT TRAILERS .....	3 UNIT LOADS
8. PRIOR TO LOADING THE TRAILER AND DURING PRELOADING INSPECTION REQUIRED BY NAVSEA OP 2165 AND REPORTED ON DD FORM 826, THE CHAINS, FITTINGS, AND LOAD BINDERS SHALL BE INSPECTED FOR STRETCH, GOUGING, BENT LINKS, WEAR, AND ANY OTHER NOTICEABLE DEFECTS. THE INSPECTOR SHALL CONFIRM THAT THE CHAINS, FITTINGS, AND LOAD BINDERS HAVE BEEN INSPECTED AND SHALL SO NOTE IN ITEM NO. 22 OF DD FORM 826. ANY DEFICIENCY SHALL BE CAUSE FOR REJECTION OF A CHAIN OR LOAD BINDER.
9. UNLESS OTHERWISE SPECIFIED, DUNNAGE LUMBER, STEEL STRAPPING, STRAP SEALS, AND NAILS SHALL BE AS SPECIFIED IN THE GENERAL TRUCKLOADING DOCUMENT MIL-STD-1320 (NAVY).
10. THE MAXIMUM GROSS WEIGHT OF THE TRACTOR-TRAILER AND THE ALLOWABLE AXLE WEIGHTS ARE THE RESPONSIBILITY OF THE CARRIER. THE CARRIER WILL ADVISE THE SHIPPER OF THESE LIMITATIONS, AND THE SHIPPER SHALL LOAD THE TRAILER IN SUCH A MANNER THAT THE TRACTOR-TRAILER WILL NOT EXCEED THESE LIMITATIONS.
11. AFTER THE BLOCKING, BRACING, AND TIEDOWNS HAVE BEEN INSPECTED, THE LOAD SHALL BE COMPLETELY COVERED WITH FIRE RESISTANT, WATERPROOF TARPULINS.
12. AFTER THE TARPULINS ARE IN PLACE, ATTACH THE PROPER EXPLOSIVES PLACARDS TO BOTH SIDES, FRONT, AND BACK OF THE TRAILER, AND ATTACH THE SHIPPING DOCUMENTS TO AN ACCESSIBLE AREA ON THE BACK DECK OF THE TRAILER.
13. FOR GENERAL TRUCKLOADING PROCEDURES REFER TO THE GENERAL TRUCKLOADING DOCUMENT MIL-STD-1320 (NAVY).

FTL 42 FT AND LONGER TRAILERS (FLATBED)



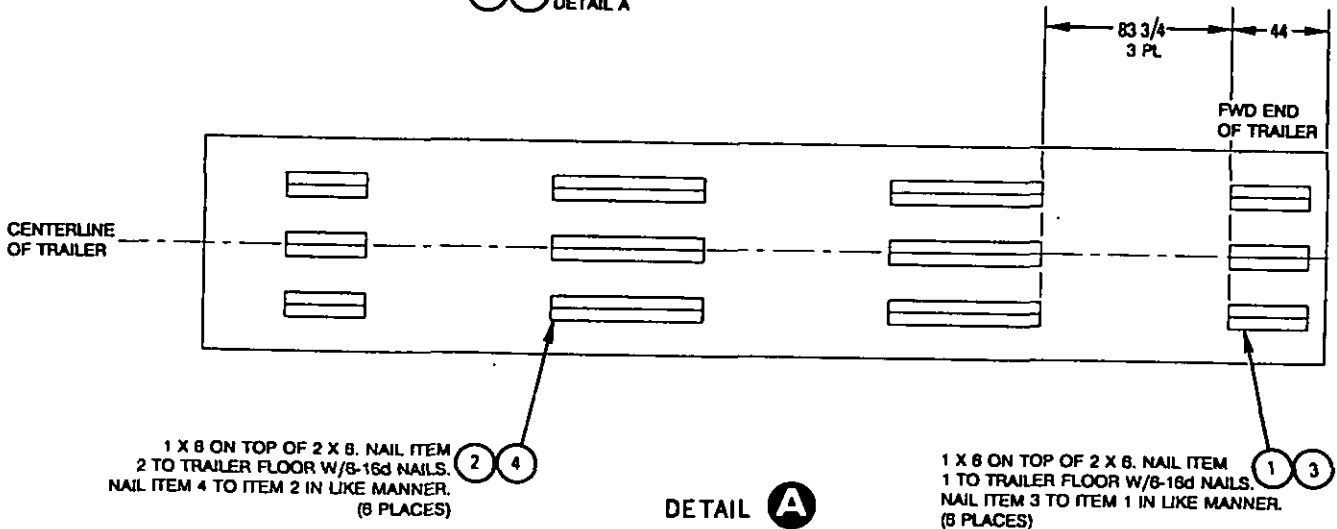
TOP VIEW



SIDE VIEW

**NOTE**

FOR REASONS OF CLARITY, NOSE ENDS OF MINES IN CENTER OF TRAILER ARE NOT SHOWN IN SIDE VIEW.



**DETAIL A**

PREPOSITION BLOCKING FOR 42 FT AND LONGER TRAILERS

1 X 8 ON TOP OF 2 X 8. NAIL ITEM 2 TO TRAILER FLOOR W/8-16d NAILS. NAIL ITEM 4 TO ITEM 2 IN LIKE MANNER. (8 PLACES)

1 X 8 ON TOP OF 2 X 6. NAIL ITEM 1 TO TRAILER FLOOR W/8-16d NAILS. NAIL ITEM 3 TO ITEM 1 IN LIKE MANNER. (6 PLACES)

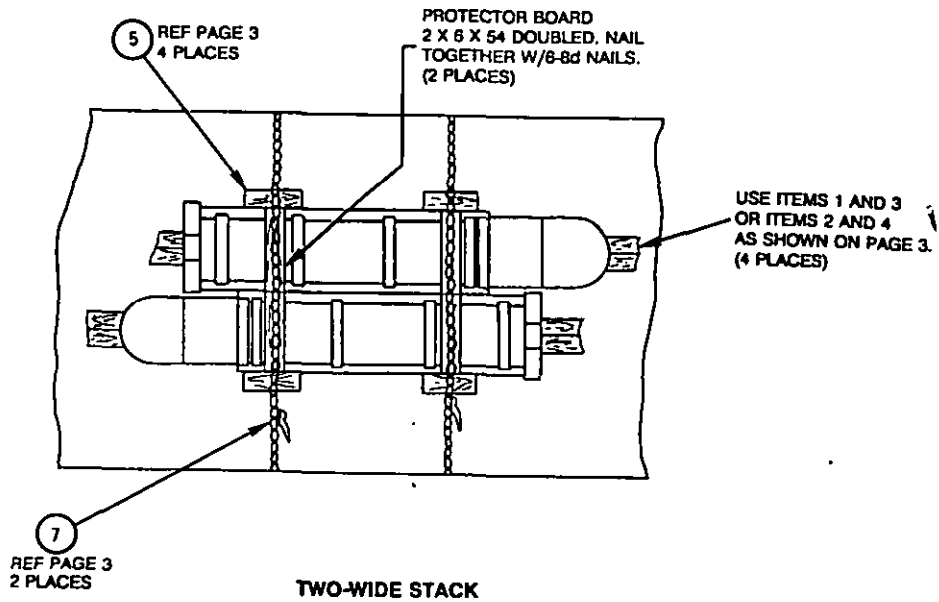
7	CHAIN & LOADBINDER	STEEL	
6	PROTECTOR BOARD	WOOD	2 X 8 X 81
5	SLEEPER	WOOD	2 X 4 X 24
4	CLEAT	WOOD	1 X 6 X 68
3	CLEAT	WOOD	1 X 6 X 36
2	CLEAT	WOOD	2 X 6 X 68
1	CLEAT	WOOD	2 X 8 X 38
ITEM	DESCRIPTION	MAT'L/DWG	DIMENSIONS

LIST OF MATERIALS

# MIL-STD-1320-280 (NAVY)

## BLOCKING AND BRACING FOR ONE AND TWO-WIDE STACKS

**NOTE**  
 IN TWO-WIDE STACKS, THE TWO MINES SHALL BE ORIENTED WITH THEIR NOSES FACING OPPOSITE DIRECTIONS.



**NOTE**  
 IN ONE-WIDE STACKS, MINE  
 MAY BE ORIENTED WITH NOSE  
 FACING EITHER FORWARD OR  
 AFT.

