

# MILITARY STANDARD

MIL-STD-1320-279

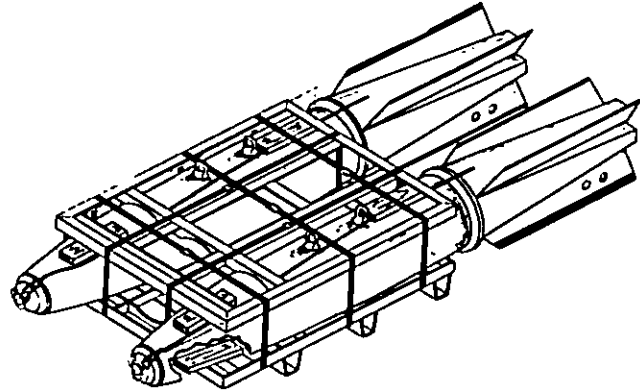
(NAVY)

23 AUGUST 1993

## TRUCKLOADING DESTRUCTOR, MK 40 OR MK 63 QUICKSTRIKE MINE ON MK 11 MOD 0 PALLET

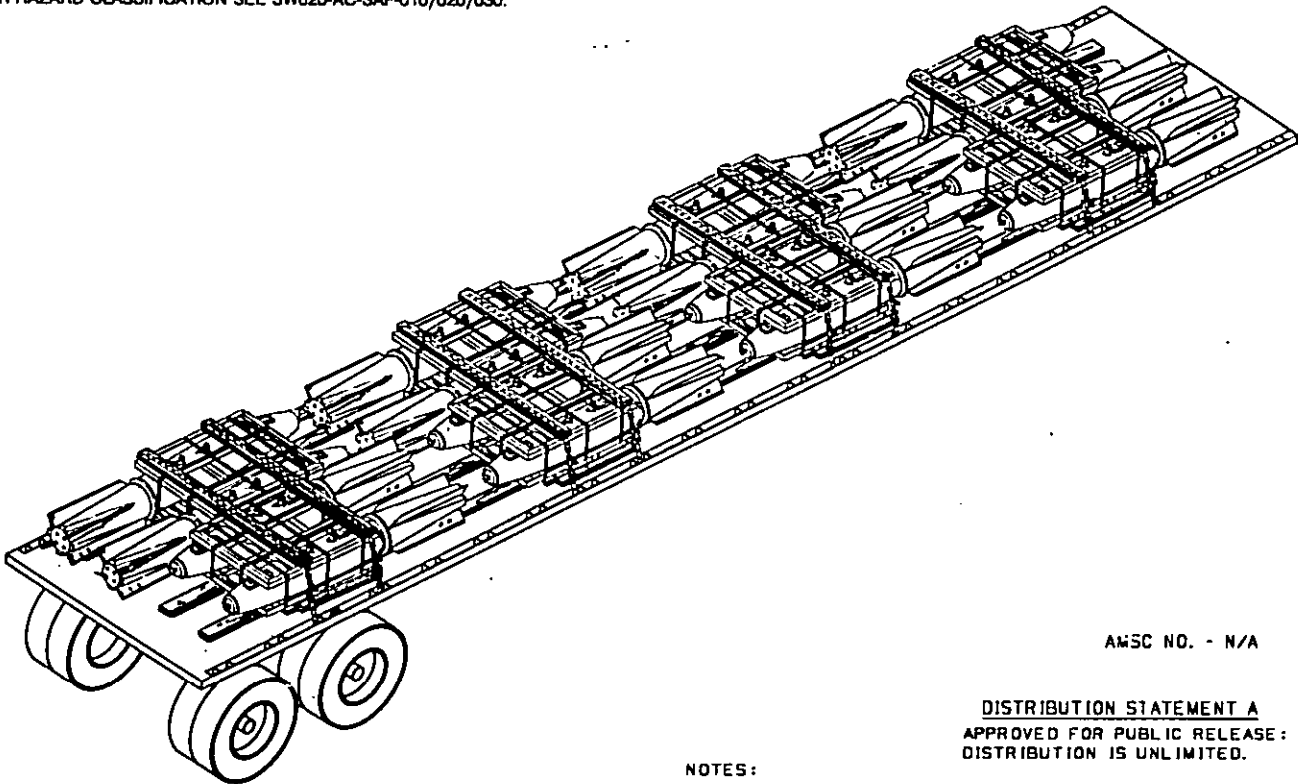
**UNIT LOAD DATA**

NUMBER OF DESTRUCTORS PER UNIT LOAD .....	2
WEIGHT OF ONE DESTRUCTOR (APPROX.) .....	1,047 LBS
WEIGHT OF ONE MK 11 PALLET ADAPTER (APPROX.) .....	200 LBS
WEIGHT OF STEEL STRAPPING .....	13 LBS
WEIGHT OF WOOD (APPROX.) .....	5 LBS
GROSS WEIGHT OF UNIT LOAD (APPROX.) .....	2,312 LBS ♦
<b>UNIT LOAD DIMENSIONS</b>	
LENGTH .....	113
WIDTH .....	43 1/4
HEIGHT .....	19 1/4
CUBE .....	55.5 CU FT



♦ DO NOT USE FOR SHIPPING WEIGHT.

FOR HAZARD CLASSIFICATION SEE SW020-AC-SAF-010/020/030.



AMSC NO. - N/A

**DISTRIBUTION STATEMENT A**  
APPROVED FOR PUBLIC RELEASE:  
DISTRIBUTION IS UNLIMITED.

**NOTES:**

- UNLESS OTHERWISE SPECIFIED, DIMENSIONS ARE IN INCHES.
- FOR CROSS REFERENCE TO ASSOCIATED PALLETIZING, CONTAINERLOADING AND CARLOADING MILITARY STANDARDS, REFER TO INDEX TO STANDARDS, MIL-HDBK-236 (NAVY).

REV LTR	REVISION DESCRIPTION	DATE	TDA	SYSCOM
			APPROVAL	

FSC 8140

AUTHORIZED AND RELEASED  
FOR HIGHWAY SHIPMENT ONLY.

SIGNATURE [Signature] 93-0-23  
TDA, WPNSTA EARLE DATE

SIGNATURE NAVSEASYSKOM BY DIRECTION DATE

ORIGINATOR [Signature] 23 AUG 93  
DATE

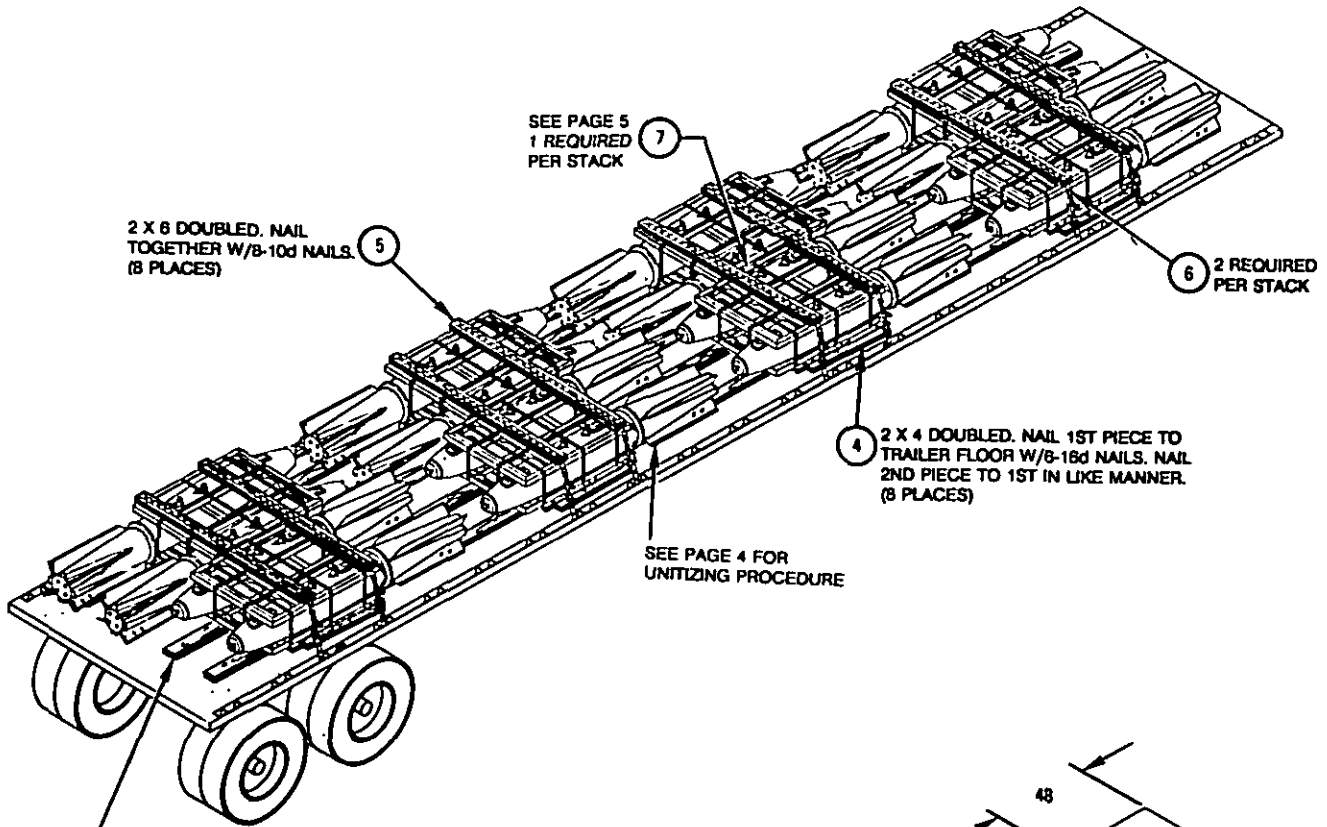
WPNSTA EARLE, NEW JERSEY

**MIL-STD-1320-279 (NAVY)****GENERAL NOTES:**

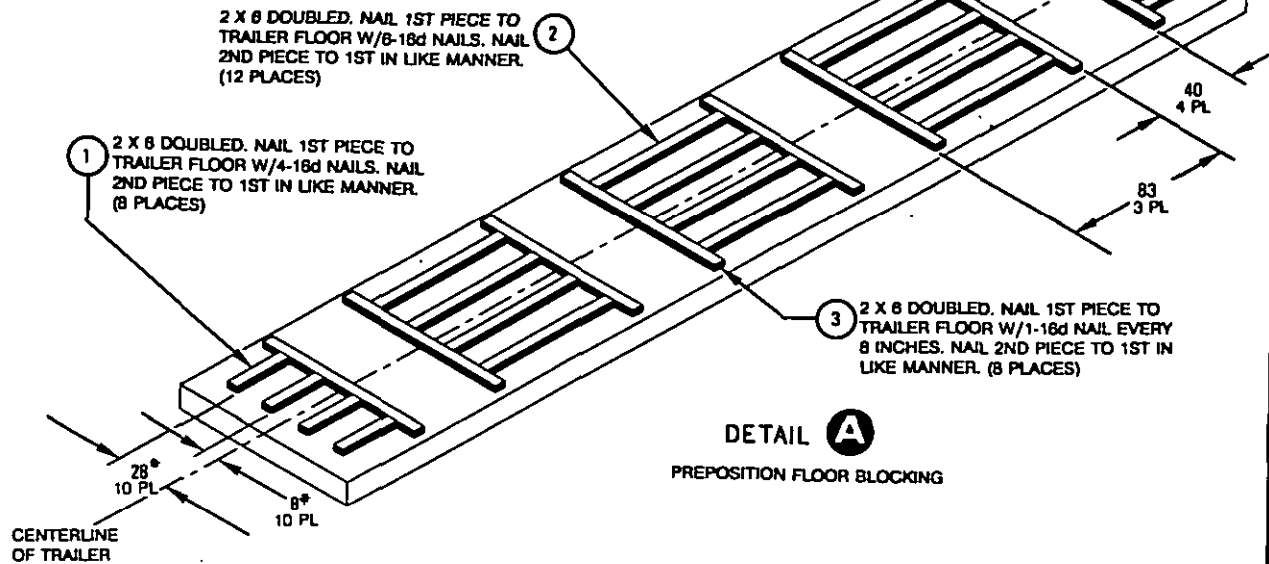
1. THIS DOCUMENT GIVES DETAILED INSTRUCTIONS FOR TRUCKLOADING THE MK 40 DESTRUCTOR OR THE MK 63 QUICKSTRIKE MINE ON THE MK 11 MOD 0 PALLET.
2. THE PROCEDURES DESCRIBED HEREIN ARE INTENDED FOR FLATBED TRAILERS OR TRUCKS. DO NOT USE TRAILERS OR TRUCKS WITH ALL METAL FLOORS.
3. CHAINS AND STEEL STRAPPING MAY BE USED INTERCHANGEABLY ON A ONE-TO-ONE BASIS FOR TIEDOWNS.
4. STEEL STRAPPING USED AS TIEDOWNS SHALL BE 2 X .050 AND SHALL CONFORM TO AND BE APPLIED AS SPECIFIED IN THE GENERAL TRUCKLOADING DOCUMENT, MIL-STD-1320 (NAVY).
5. CHAINS, FITTINGS, AND LOAD BINDERS SHALL CONFORM TO AND BE APPLIED AS SPECIFIED IN THE GENERAL TRUCKLOADING DOCUMENT, MIL-STD-1320 (NAVY), EXCEPT THAT THE CHAIN/GRAB HOOKS SHALL BE ATTACHED TO THE STAKE POCKETS (NOT AROUND THE RUB RAIL).
6. PROTECTOR BOARDS (DOUBLED 2 X 8'S) SHALL BE USED UNDER THE TIEDOWNS. STEEL STRAPS SHALL BE SECURED TO THE PROTECTOR BOARDS USING 2-INCH STRAPPING STAPLES. WHEN USING CHAIN, THE CHAINS SHALL BE SECURED TO THE PROTECTOR BOARD BY DRIVING A 10d NAIL THROUGH THE CHAIN LINK AND CLINCHING THE NAIL OVER THE CHAIN. FIVE STAPLES/NAIIS SHALL BE USED FOR EACH TIEDOWN.
7. THE MAXIMUM NUMBER OF UNIT LOADS THAT CAN BE LOADED ONTO A TRAILER IS AS FOLLOWS.
 

42 FT AND LONGER TRAILERS .....	8 UNIT LOADS
32 THRU 41 FT TRAILERS .....	6 UNIT LOADS
19 THRU 31 FT TRAILERS .....	4 UNIT LOADS
12 THRU 18 FT TRAILERS .....	2 UNIT LOADS
8. PRIOR TO LOADING THE TRAILER AND DURING PRELOADING INSPECTION REQUIRED BY NAVSEA OP 2165 AND REPORTED ON DD FORM 826, THE CHAINS, FITTINGS, AND LOAD BINDERS SHALL BE INSPECTED FOR STRETCH, GOUGING, BENT LINKS, WEAR, AND ANY OTHER NOTICEABLE DEFECTS. THE INSPECTOR SHALL CONFIRM THAT THE CHAINS, FITTINGS, AND LOAD BINDERS HAVE BEEN INSPECTED AND SHALL SO NOTE IN ITEM NO. 22 OF DD FORM 826. ANY DEFICIENCY SHALL BE CAUSE FOR REJECTION OF A CHAIN OR LOAD BINDER.
9. UNLESS OTHERWISE SPECIFIED, DUNNAGE LUMBER, STEEL STRAPPING, STRAP SEALS, AND NAILS SHALL BE AS SPECIFIED IN THE GENERAL TRUCKLOADING DOCUMENT MIL-STD-1320 (NAVY).
10. THE MAXIMUM GROSS WEIGHT OF THE TRACTOR-TRAILER AND THE ALLOWABLE AXLE WEIGHTS ARE THE RESPONSIBILITY OF THE CARRIER. THE CARRIER WILL ADVISE THE SHIPPER OF THESE LIMITATIONS, AND THE SHIPPER SHALL LOAD THE TRAILER IN SUCH A MANNER THAT THE TRACTOR-TRAILER WILL NOT EXCEED THESE LIMITATIONS.
11. AFTER THE BLOCKING, BRACING, AND TIEDOWNS HAVE BEEN INSPECTED, THE LOAD SHALL BE COMPLETELY COVERED WITH FIRE RESISTANT, WATERPROOF TARPULINS.
12. AFTER THE TARPULINS ARE IN PLACE, ATTACH THE PROPER EXPLOSIVES PLACARDS TO BOTH SIDES, FRONT, AND BACK OF THE TRAILER, AND ATTACH THE SHIPPING DOCUMENTS TO AN ACCESSIBLE AREA ON THE BACK DECK OF THE TRAILER.
13. FOR GENERAL TRUCKLOADING PROCEDURES REFER TO THE GENERAL TRUCKLOADING DOCUMENT MIL-STD-1320 (NAVY).

FTL 42 FT AND LONGER FLATBED TRAILERS



PREPOSITION BLOCKING  
SEE DETAIL A



DETAIL A  
PREPOSITION FLOOR BLOCKING

\* THESE DIMENSIONS MAY VARY  
TO SUIT TRAILER CONSTRUCTION.

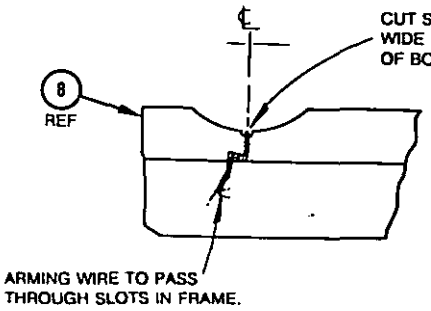
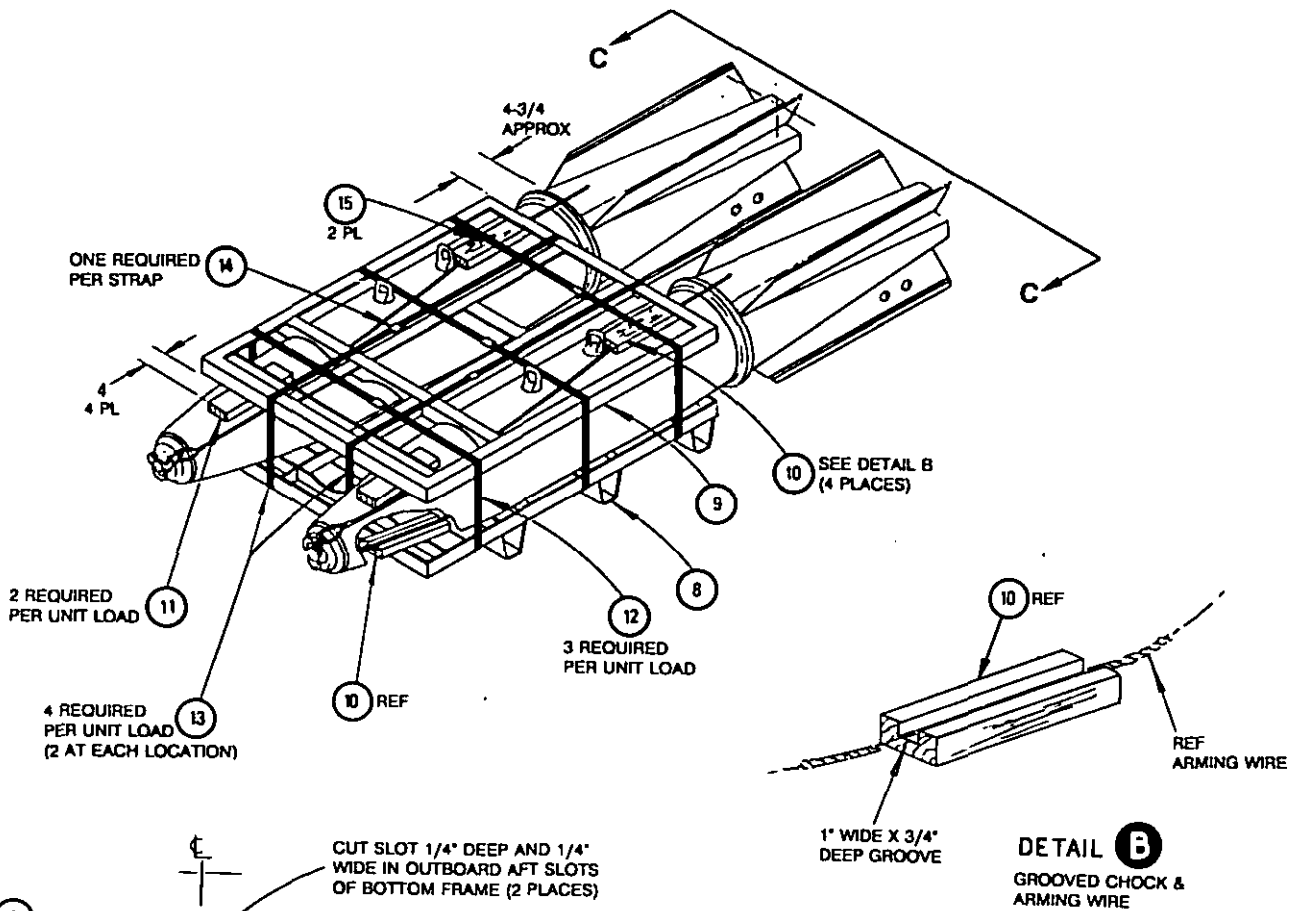
7	SPACER	PLYWOOD	1/2 X 36 X 19-1/2
8	CHAIN & LOADBINDER	STEEL	
5	PROTECTOR BOARD	WOOD	2 X 6 X 87
4	SLEEPER	WOOD	2 X 4 X 40
3	CROSSMEMBER	WOOD	2 X 6 X 87
2	CENTER CLEAT	WOOD	2 X 6 X 72
1	BACKUP CLEAT	WOOD	2 X 6 X 18
ITEM	DESCRIPTION	MAT'L/DWG	DIMENSIONS

LIST OF MATERIALS

# MIL-STD-1320-279 (NAVY)

## PALLETIZING PROCEDURE:

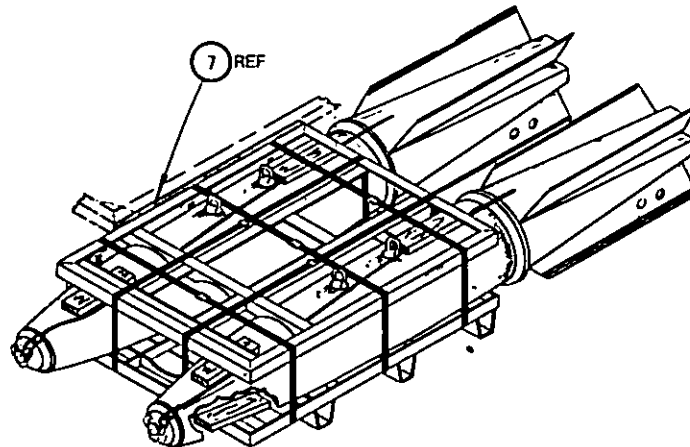
1. THREAD TWO LONGITUDINAL STRAPS, ITEM 13, THROUGH EACH SLOT IN BOTTOM FRAME, ITEM 8 (FOUR STRAPS TOTAL).
2. PLACE TWO GROOVED CHOCKS, ITEM 10, ON FORWARD END OF BOTTOM FRAME IN OUTBOARD POSITIONS, WITH ROUTERED GROOVE IN CHOCKS FACING UPWARD WITH 4-INCH OVERHANG AS SHOWN.
3. PLACE TWO DESTRUCTORS IN OUTBOARD POSITIONS OF BOTTOM FRAME WITH SUSPENSION LUGS AT 12 O'CLOCK (STRAIGHT UP). ENSURE THAT CHOCKS ARE POSITIONED UNDER CENTER OF NOSE OF WEAPONS WITH ARMING WIRE PASSING THROUGH GROOVE.
4. PLACE TOP FRAME, ITEM 9, OVER DESTRUCTORS.
5. PLACE TWO UPPER FORWARD CHOCKS (NOT GROOVED), ITEM 11, BETWEEN TOP FRAME AND WEAPONS AS SHOWN WITH A 4-INCH OVERHANG.
6. PLACE TWO GROOVED CHOCKS, ITEM 10, INTO POSITION AGAINST AFT LUGS AND VERTICAL PART OF TOP FRAME ANGLE AS SHOWN. IF ARMING WIRE IS PRESENT, POSITION CHOCK WITH GROOVE OVER WIRE.
7. POSITION 1ST LAYER OF LONGITUDINAL STRAPPING, ITEM 13, OVER TOP FRAME. TENSION AND SECURE EACH STRAP WITH ONE DOUBLE NOTCHED SEAL, ITEM 14.
8. REPEAT STEP 7 FOR SECOND LAYER OF LONGITUDINAL STRAPPING.
9. POSITION LATERAL STRAPPING, ITEM 12, UNDER BOTTOM FRAME AND OVER TOP FRAME IN APPROXIMATE POSITIONS SHOWN. TENSION AND SECURE EACH STRAP WITH ONE DOUBLE NOTCHED SEAL, ITEM 14.
10. STAPLE AFT MOST LATERAL STRAP, ITEM 12, WITH TWO STAPLES, ITEM 15 TO CHOCKS, ITEM 10 (ONE STAPLE PER CHOCK).



**VIEW C-C**  
AFT SECTION OF BOTTOM FRAME.  
WEAPONS AND TOP FRAME NOT  
SHOWN FOR CLARITY.

15	STAPLE	STEEL	1-1/4" SIZE
14	STRAP SEAL	STEEL	1-1/4" SIZE
13	LONGITUDINAL STRAPPING	STEEL	1-1/4 X .035 X 13 FT
12	LATERAL STRAPPING	STEEL	1-1/4 X .035 X 11 FT
11	CHOCK, UPPER, FWD	WOOD, DRESSED	2 X 4 X 12-3/8
10	CHOCK, GROOVED	WOOD, DRESSED	2 X 4 X 12-3/8
9	FRAME, TOP (MK 11 MOD 0)	1579710	
8	FRAME, BOTTOM (MK 11 MOD 0)	2088418	
<b>ITEM</b>	<b>DESCRIPTION</b>	<b>MAT'L/DWG</b>	<b>DIMENSIONS</b>

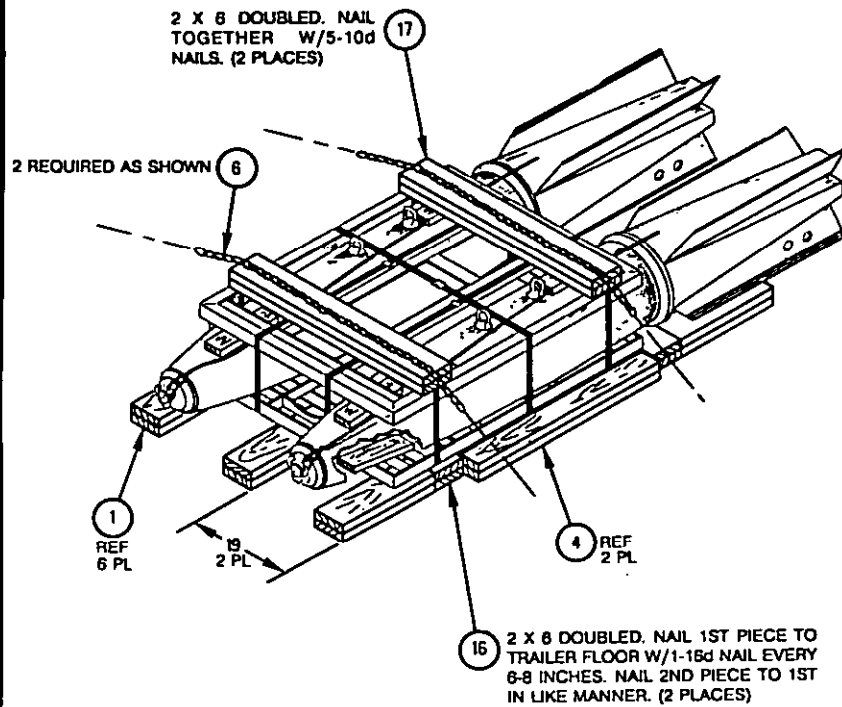
**LIST OF MATERIALS**



DETAIL **D**

POSITIONING OF PLYWOOD SPACER

DUNNAGING FOR ONE-WIDE STACK



17	PROTECTOR BOARD, 1-WIDE STACK	WOOD	2 X 6 X 43-1/2
16	CROSSMEMBER, 1-WIDE STACK	WOOD	2 X 6 X 45
ITEM	DESCRIPTION	MAT'L/DWG	DIMENSIONS

LIST OF MATERIALS

PREPARING ACTIVITY:

NAVY-OS

( PROJECT NO. 8140-004 )