

MILITARY STANDARD

TRUCKLOADING

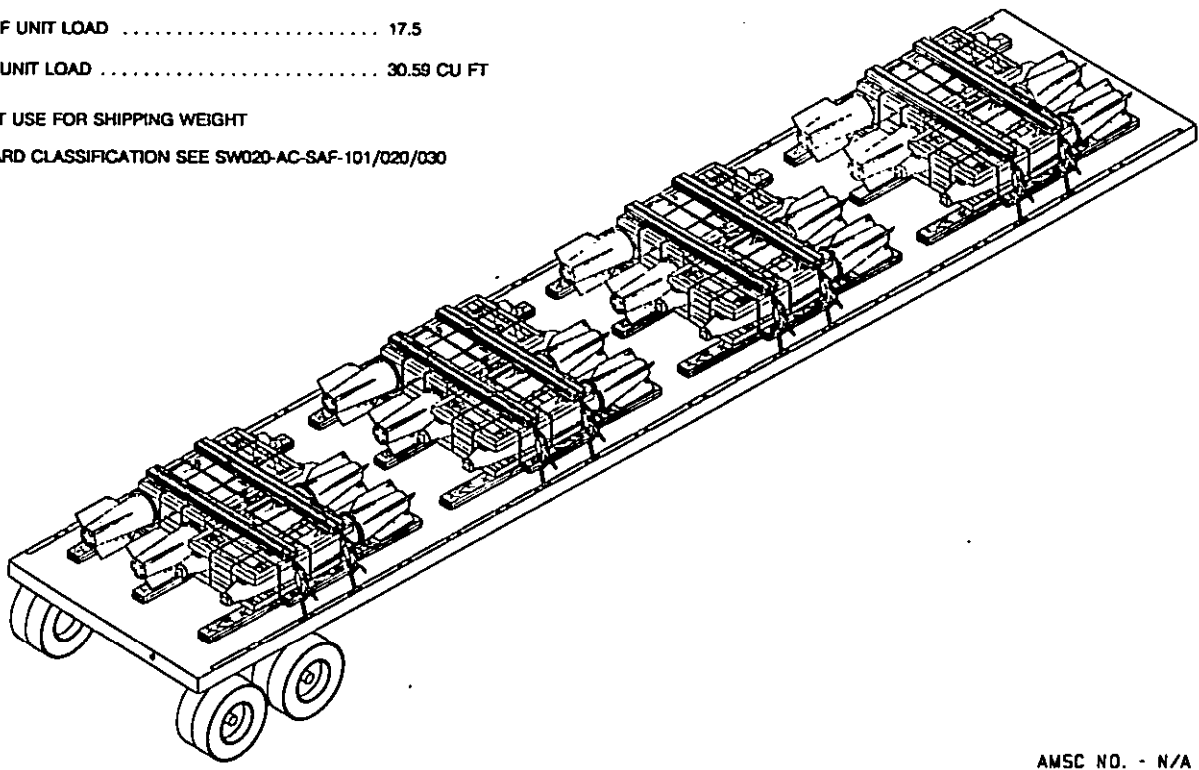
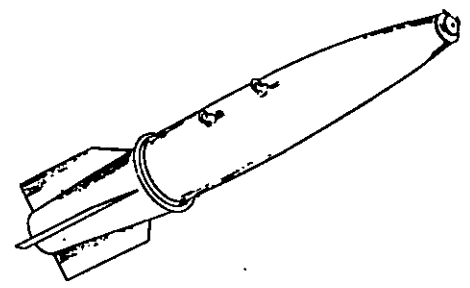
ALPHA CONFIGURED UNDERWATER MINE, MK 62 MODS OR DESTRUCTOR, MK 36 MODS ON PALLET ADAPTER, MK 9

MIL-STD-1320-276
(NAVY)
6 JULY 1993

TRUCKLOAD DATA

- WEIGHT OF ONE DESTRUCTOR (APPROX.) 544 LBS
- NUMBER OF DESTRUCTORS PER UNIT LOAD 2
- WEIGHT OF MK 9 ADAPTER FRAME (APPROX.) 133 LBS
- GROSS WEIGHT OF UNIT LOAD (APPROX) 1,240 LBS ♦
- WIDTH OF UNIT LOAD 33.75
- LENGTH OF UNIT LOAD 89.5
- HEIGHT OF UNIT LOAD 17.5
- CUBE OF UNIT LOAD 30.59 CU FT

♦ DO NOT USE FOR SHIPPING WEIGHT
FOR HAZARD CLASSIFICATION SEE SW020-AC-SAF-101/020/030



AMSC NO. - N/A

DISTRIBUTION STATEMENT A
APPROVED FOR PUBLIC RELEASE:
DISTRIBUTION IS UNLIMITED.

- NOTES:
1. UNLESS OTHERWISE SPECIFIED, DIMENSIONS ARE IN INCHES.
 2. FOR CROSS REFERENCE TO ASSOCIATED PALLETIZING, CONTAINERLOADING AND CARLOADING MILITARY STANDARDS, REFER TO INDEX TO STANDARDS, MIL-HDBK-236 (NAVY).

REV LTR	REVISION DESCRIPTION	DATE	TOA	SYSCOM
			APPROVAL	

FSC 8140

**AUTHORIZED AND RELEASED
FOR HIGHWAY SHIPMENT ONLY.**

SIGNATURE *[Signature]* TOA, WPNSTA EARLE DATE 75-7-6
SIGNATURE *[Signature]* BY DIRECTION DATE 43 7-6

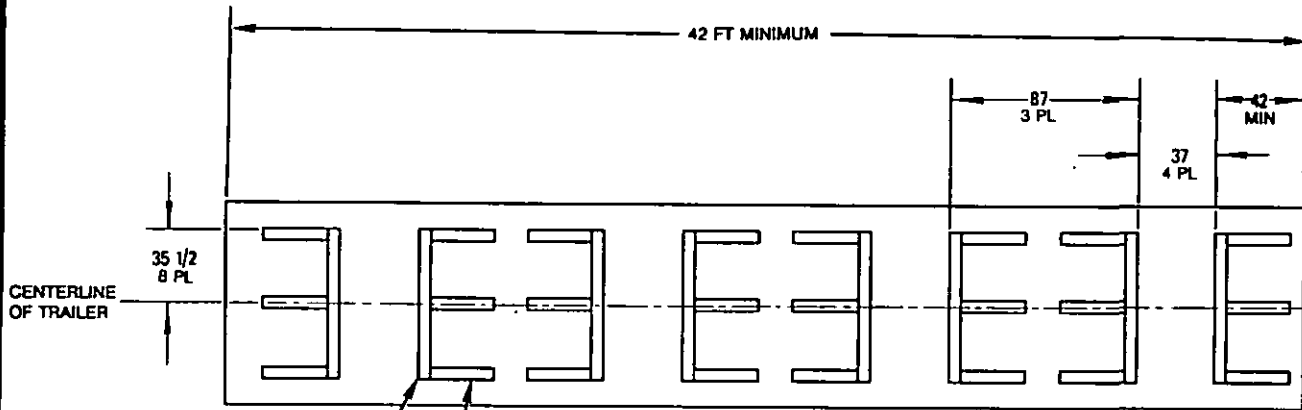
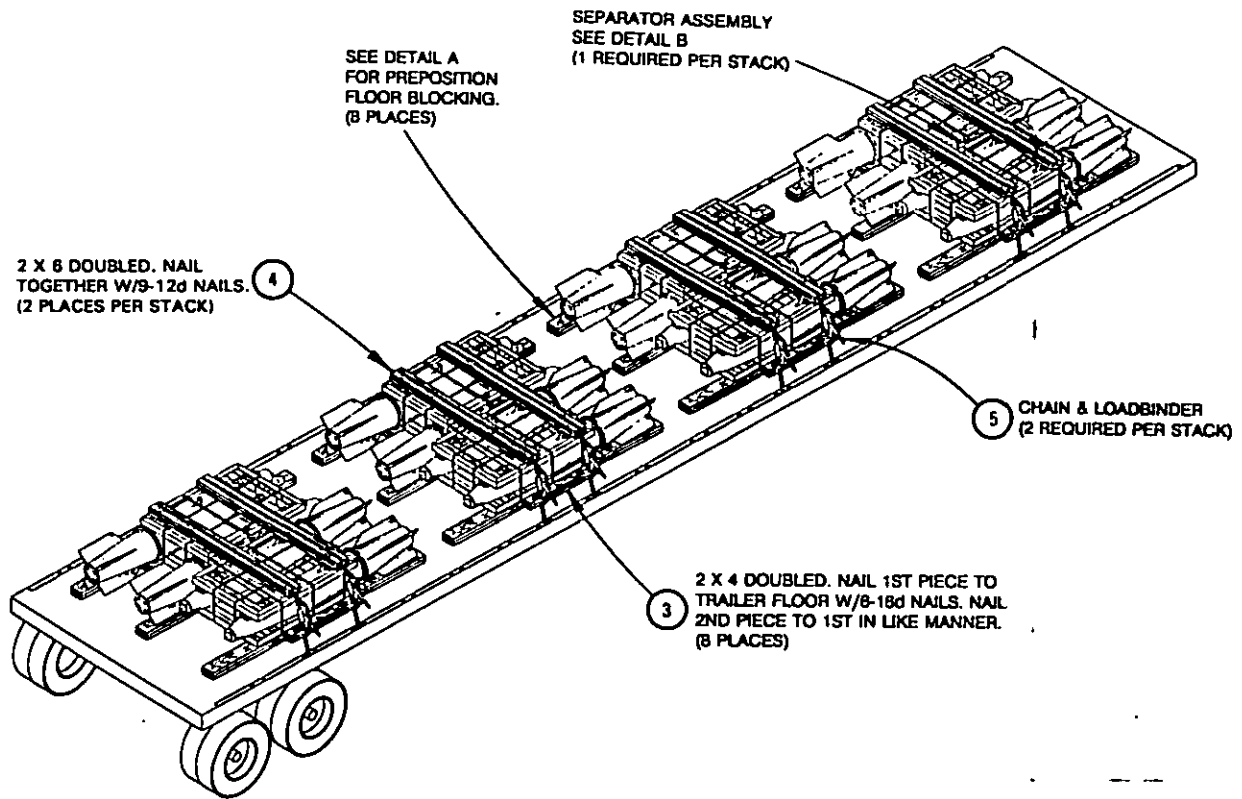
ORIGINATOR *[Signature]* DATE 4/21/93
WPNSTA EARLE, NEW JERSEY

MIL-STD-1320-276 (NAVY)**GENERAL NOTES:**

1. THIS DOCUMENT GIVES DETAILED INSTRUCTIONS FOR TRUCKLOADING THE ALPHA CONFIGURED DESTROYER MK 38 OR THE MK 62 QUICKSTRIKE ON THE MK 8 PALLET.
2. THE PROCEDURES DESCRIBED HEREIN ARE INTENDED FOR FLATBED TRAILERS OR TRUCKS. DO NOT USE TRAILERS OR TRUCKS WITH ALL METAL FLOORS.
3. CHAINS AND STEEL STRAPPING MAY BE USED INTERCHANGEABLY ON A ONE-TO-ONE BASIS FOR TIEDOWNS.
4. STEEL STRAPPING USED AS TIEDOWNS SHALL BE 2 X .050 AND SHALL CONFORM TO AND BE APPLIED AS SPECIFIED IN THE GENERAL TRUCKLOADING DOCUMENT, MIL-STD-1320 (NAVY).
5. CHAINS, FITTINGS, AND LOAD BINDERS SHALL CONFORM TO AND BE APPLIED AS SPECIFIED IN THE GENERAL TRUCKLOADING DOCUMENT, MIL-STD-1320 (NAVY), EXCEPT THAT THE CHAIN/GRAB HOOKS SHALL BE ATTACHED TO THE STAKE POCKETS (NOT AROUND THE RUB RAIL).
6. PROTECTOR BOARDS (DOUBLED 2 X 6'S) SHALL BE USED UNDER THE TIEDOWNS. STEEL STRAPS SHALL BE SECURED TO THE PROTECTOR BOARDS USING 2-INCH STRAPPING STAPLES. WHEN USING CHAIN, THE CHAINS SHALL BE SECURED TO THE PROTECTOR BOARD BY DRIVING A 10d NAIL THROUGH THE CHAIN LINK AND CLINCHING THE NAIL OVER THE CHAIN. FIVE STAPLES/NAIIS SHALL BE USED FOR EACH TIEDOWN.
7. THE MAXIMUM NUMBER OF UNIT LOADS THAT CAN BE LOADED ONTO A TRAILER IS AS FOLLOWS.

42 FT AND LONGER TRAILERS	8 UNIT LOADS
31 THRU 41 FT TRAILERS	6 UNIT LOADS
21 THRU 30 FT TRAILERS	4 UNIT LOADS
11 THRU 20 FT TRAILERS	2 UNIT LOADS
8. PRIOR TO LOADING THE TRAILER AND DURING PRELOADING INSPECTION REQUIRED BY NAVSEA OP 2165 AND REPORTED ON DD FORM 628, THE CHAINS, FITTINGS, AND LOAD BINDERS SHALL BE INSPECTED FOR STRETCH, GOUGING, BENT LINKS, WEAR, AND ANY OTHER NOTICEABLE DEFECTS. THE INSPECTOR SHALL CONFIRM THAT THE CHAINS, FITTINGS, AND LOAD BINDERS HAVE BEEN INSPECTED AND SHALL SO NOTE IN ITEM NO. 22 OF DD FORM 628. ANY DEFICIENCY SHALL BE CAUSE FOR REJECTION OF A CHAIN OR LOAD BINDER.
9. UNLESS OTHERWISE SPECIFIED, DUNNAGE LUMBER, STEEL STRAPPING, STRAP SEALS, AND NAILS SHALL BE AS SPECIFIED IN THE GENERAL TRUCKLOADING DOCUMENT MIL-STD-1320 (NAVY).
10. THE MAXIMUM GROSS WEIGHT OF THE TRACTOR-TRAILER AND THE ALLOWABLE AXLE WEIGHTS ARE THE RESPONSIBILITY OF THE CARRIER. THE CARRIER WILL ADVISE THE SHIPPER OF THESE LIMITATIONS, AND THE SHIPPER SHALL LOAD THE TRAILER IN SUCH A MANNER THAT THE TRACTOR-TRAILER WILL NOT EXCEED THESE LIMITATIONS.
11. AFTER THE BLOCKING, BRACING, AND TIEDOWNS HAVE BEEN INSPECTED, THE LOAD SHALL BE COMPLETELY COVERED WITH FIRE RESISTANT, WATERPROOF TARPULINS.
12. AFTER THE TARPULINS ARE IN PLACE, ATTACH THE PROPER EXPLOSIVES PLACARDS TO BOTH SIDES, FRONT, AND BACK OF THE TRAILER, AND ATTACH THE SHIPPING DOCUMENTS TO AN ACCESSIBLE AREA ON THE BACK DECK OF THE TRAILER.
13. FOR GENERAL TRUCKLOADING PROCEDURES REFER TO THE GENERAL TRUCKLOADING DOCUMENT MIL-STD-1320 (NAVY).

FTL 42 THRU 48 FT TRAILER



PREPOSITION FLOOR BLOCKING

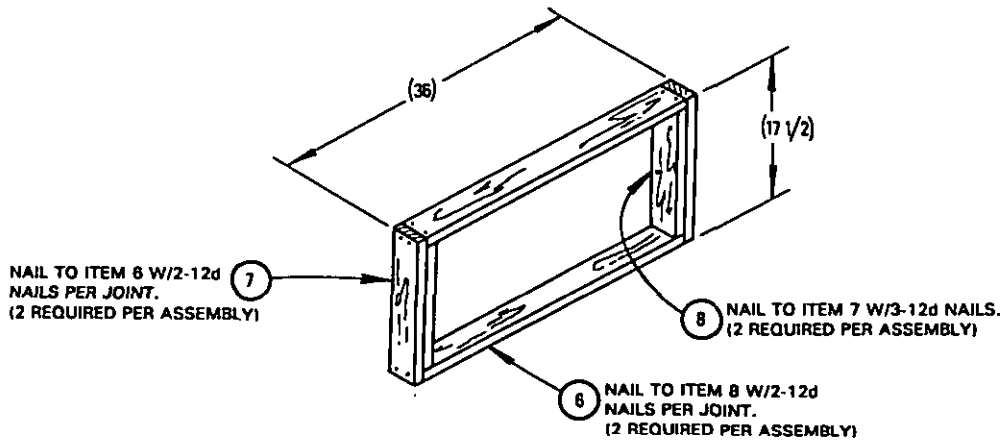
DETAIL A

2 X 6 DOUBLED. NAIL 1ST PIECE TO TRAILER FLOOR W/8-16d NAILS. NAIL 2ND PIECE TO 1ST IN LIKE MANNER. (8 PLACES)

2 X 6 DOUBLED. NAIL 1ST PIECE TO TRAILER FLOOR W/4-16d NAILS. NAIL 2ND PIECE TO 1ST IN LIKE MANNER. (24 PLACES)

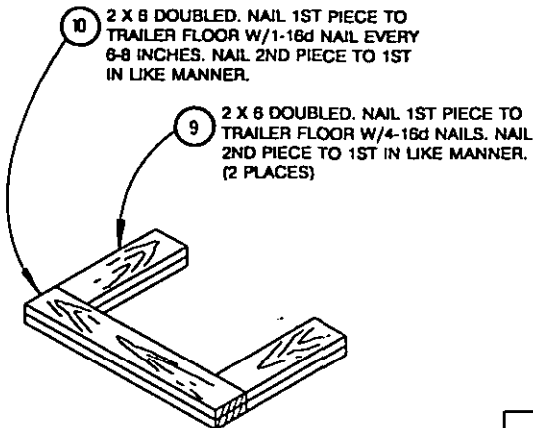
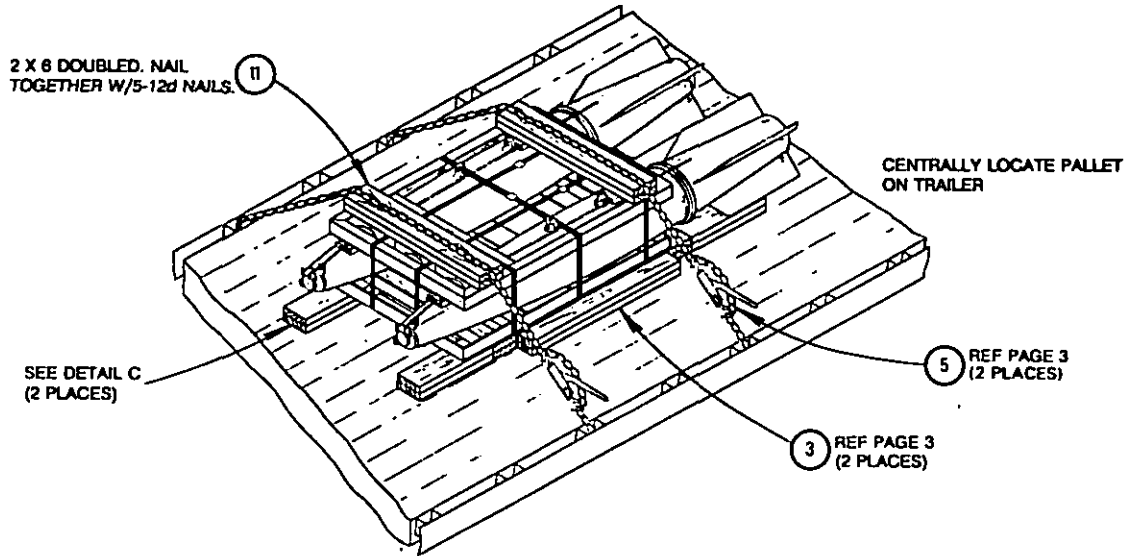
8	VERTICAL SPACER, INSIDE	WOOD	2 X 4 X 14½
7	VERTICAL SPACER, OUTSIDE	WOOD	2 X 4 X 17½
6	HORIZONTAL SPACER	WOOD	2 X 4 X 33
5	CHAIN & LOADBINDER	STEEL	
4	PROTECTOR BOARD	WOOD	2 X 6 X 71
3	SLEEPER	WOOD	2 X 4 X 36
2	CROSSMEMBER	WOOD	2 X 6 X 71
1	BACKUP CLEAT	WOOD	2 X 6 X 24
ITEM	DESCRIPTION	MAT'L/DWG	DIMENSIONS

MIL-STD-1320-276 (NAVY)



DETAIL B
SEPARATOR ASSEMBLY

BLOCKING AND BRACING FOR ONE-WIDE STACK



DETAIL C
FORWARD & AFT END BLOCKING FOR ONE-WIDE STACK (2 REQUIRED)

11	PROTECTOR BOARD	WOOD	2 X 6 X 33-3/4
10	CROSSMEMBER	WOOD	2 X 8 X 33-3/4
9	BACKUP CLEAT	WOOD	2 X 6 X 24
ITEM	DESCRIPTION	MAT'L/DWG	DIMENSIONS

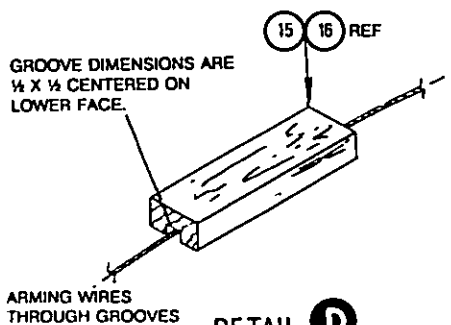
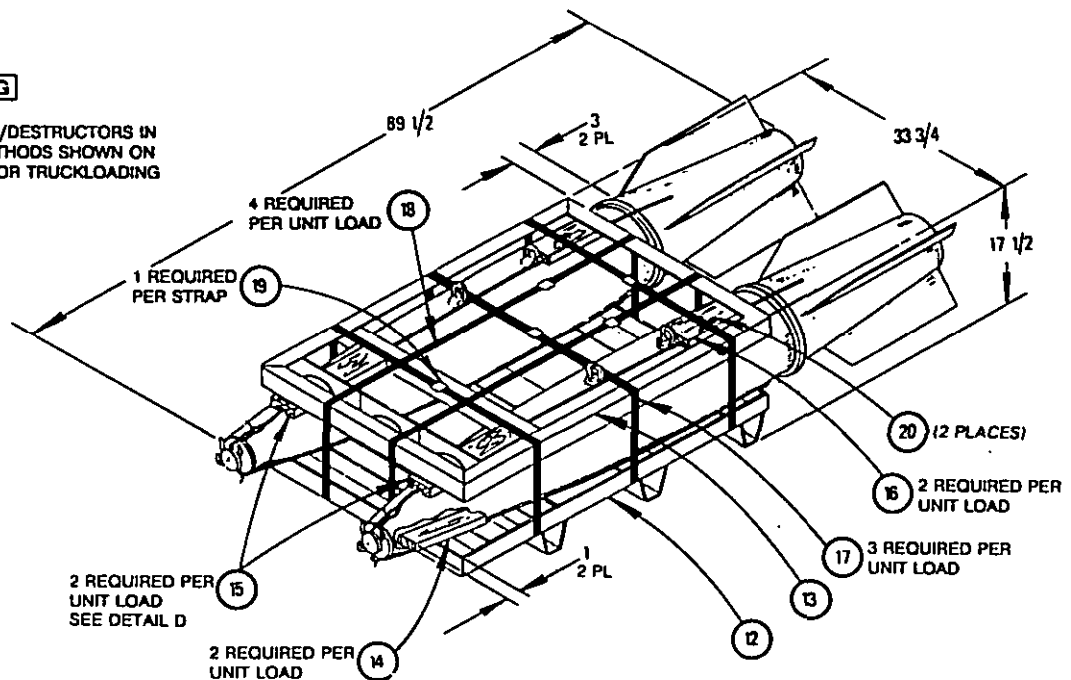
LIST OF MATERIALS

PALLETIZING PROCEDURE

- (A) POSITION LONGITUDINAL STRAPPING, ITEM 18, THROUGH SLOTS UNDER BOTTOM ADAPTER FRAME, ITEM 12. TWO STRAPS SHALL BE USED IN EACH SLOT FOR A TOTAL OF FOUR LONGITUDINAL STRAPS.
- (B) PLACE BOTTOM FWD CHOCKS, ITEM 14, ON FWD END OF BOTTOM FRAME IN OUTBOARD POSITIONS WITH ONE INCH OVERHANG AS SHOWN. ROUTERD GROOVE IN CHOCKS (IF REQUIRED) SHALL FACE UPWARD.
- (C) PLACE TWO ALL-UP DSTs/QUICKSTRIKES IN OUTBOARD POSITIONS OF BOTTOM FRAME WITH SUSPENSION LUGS AT 12 O'CLOCK. ENSURE CHOCKS ARE POSITIONED UNDER CENTER OF NOSE OF WEAPONS. ARMING WIRES, IF PRESENT, SHALL BE POSITIONED IN GROOVES IN CHOCKS.
- (D) PLACE TOP FRAME, ITEM 13, ON TOP OF WEAPONS AS SHOWN.
- (E) PLACE TOP FWD CHOCKS, ITEM 15, BETWEEN FRAME AND WEAPONS WITH ONE INCH OVERHANG. PLACE TOP AFT CHOCKS, ITEM 16, INTO POSITION BETWEEN AFT LUGS AND VERTICAL PART OF TOP FRAME ANGLE AS SHOWN. GROOVES IN CHOCKS SHALL BE POSITIONED OVER ARMING WIRES. SEE DETAIL D.
- (F) POSITION FIRST LAYER OF LONGITUDINAL STRAPPING, ITEM 18, OVER TOP FRAME AS SHOWN. TENSION AND SECURE EACH STRAP WITH ONE DOUBLE NOTCHED SEAL, ITEM 19.
- (G) POSITION SECOND LAYER OF LONGITUDINAL STRAPPING ON TOP OF FIRST LAYER. SECURE EACH STRAP WITH ONE DOUBLE NOTCHED SEAL, ITEM 19.
- (H) POSITION LATERAL STRAPPING, ITEM 17, UNDER BOTTOM ADAPTER FRAME AND OVER TOP ADAPTER FRAME IN APPROXIMATE POSITIONS SHOWN. TENSION AND SECURE EACH STRAP WITH ONE DOUBLE NOTCHED SEAL, ITEM 19, PER STRAP.
- (J) STAPLE LATERAL STRAPPING, ITEM 17, TO TOP AFT CHOCKS, ITEM 16, WITH 1¼-INCH STRAPPING STAPLES, ITEM 20.

WARNING

THE PALLETIZATION OF DSTs/DESTRUCTORS IN ACCORDANCE WITH THE METHODS SHOWN ON THIS PAGE IS AUTHORIZED FOR TRUCKLOADING PURPOSES ONLY.



DETAIL D
GROOVED CHOCK FOR
FWD & AFT ENDS

ITEM	DESCRIPTION	MAT'L/DWG	DIMENSIONS
20	STAPLE	STEEL	1¼" SIZE
19	SEAL	STEEL	1¼" SIZE
18	STRAPPING, LONGITUDINAL	STEEL	1¼ X .035 X 12 FT
17	STRAPPING, LATERAL	STEEL	1¼ X .035 X 10 FT
16	CHOCK, AFT, TOP	WOOD, DRESSED	2 X 4 X 9½
15	CHOCK, FWD, TOP	WOOD, DRESSED	2 X 4 X 13
14	CHOCK, FWD, BOTTOM	WOOD, DRESSED	2 X 4 X 13
13	ADAPTER FRAME, TOP, MK 9	1583387	
12	ADAPTER FRAME, BOTTOM, MK 9	1583385	
ITEM	DESCRIPTION	MAT'L/DWG	DIMENSIONS

LIST OF MATERIALS