

MILITARY STANDARD

MIL-STD-1320-274

TRUCKLOADING

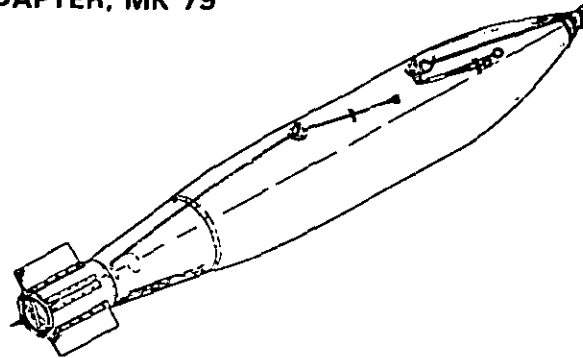
(NAVY)

ALPHA CONFIGURED UNDERWATER MINE, MK 64 MODS OR DESTRUCTOR, MK 41 MODS ON PALLET ADAPTER, MK 79

8 JUNE 1993

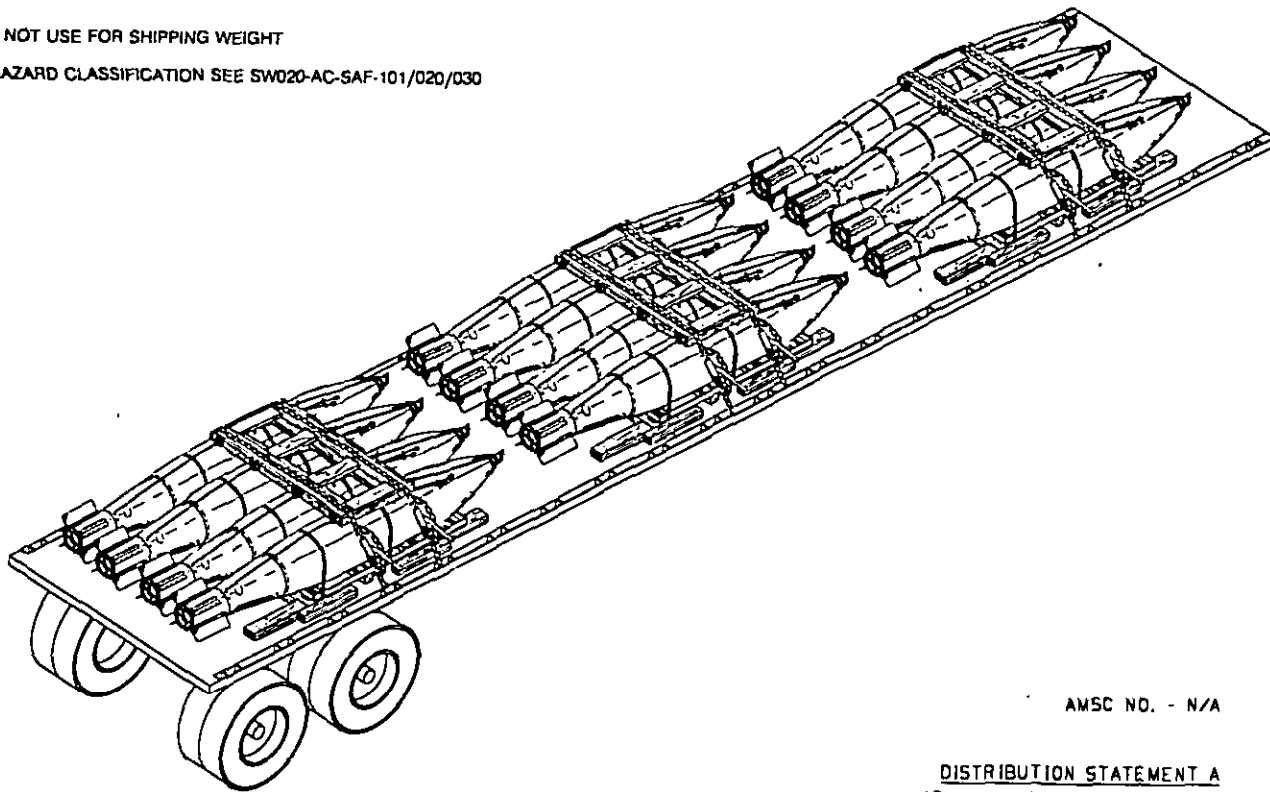
TRUCKLOAD DATA

WEIGHT OF ONE DESTRUCTOR (APPROX.) 1,989 LBS
 NUMBER OF DESTRUCTORS PER UNIT LOAD 2
 WEIGHT OF MK 79 ADAPTER BOTTOM FRAME
 (APPROX.) 175 LBS
 GROSS WEIGHT OF TWO-BOMB
 UNIT LOAD (APPROX.) 4,160 LBS ♦
 WIDTH OF UNIT LOAD 38
 LENGTH OF UNIT LOAD 144.5
 HEIGHT OF UNIT LOAD 24.7
 CUBE OF UNIT LOAD 78.5 CU FT



♦ DO NOT USE FOR SHIPPING WEIGHT

FOR HAZARD CLASSIFICATION SEE SW020-AC-SAF-101/020/030



AMSC NO. - N/A

DISTRIBUTION STATEMENT A
APPROVED FOR PUBLIC RELEASE:
DISTRIBUTION IS UNLIMITED.

NOTES:

1. UNLESS OTHERWISE SPECIFIED, DIMENSIONS ARE IN INCHES.
2. FOR CROSS REFERENCE TO ASSOCIATED PALLETIZING, CONTAINERLOADING AND CARLOADING MILITARY STANDARDS, REFER TO INDEX TO STANDARDS, MIL-HDBK-236 (NAVY).

FSC 8140

REV LTR	REVISION DESCRIPTION	DATE	TDA	SYSCOM
			APPROVAL	

**AUTHORIZED AND RELEASED
FOR HIGHWAY SHIPMENT ONLY.**

ORIGINATOR

WPNSTA EARLE, NEW JERSEY

E. Ronaldi 6-8-93
 SIGNATURE TDA, WPNSTA EARLE DATE
A. K. Green 6-5-93
 SIGNATURE NAVSEASYSKOM BY DIRECTION DATE

[Signature] 9/21/97
 DATE

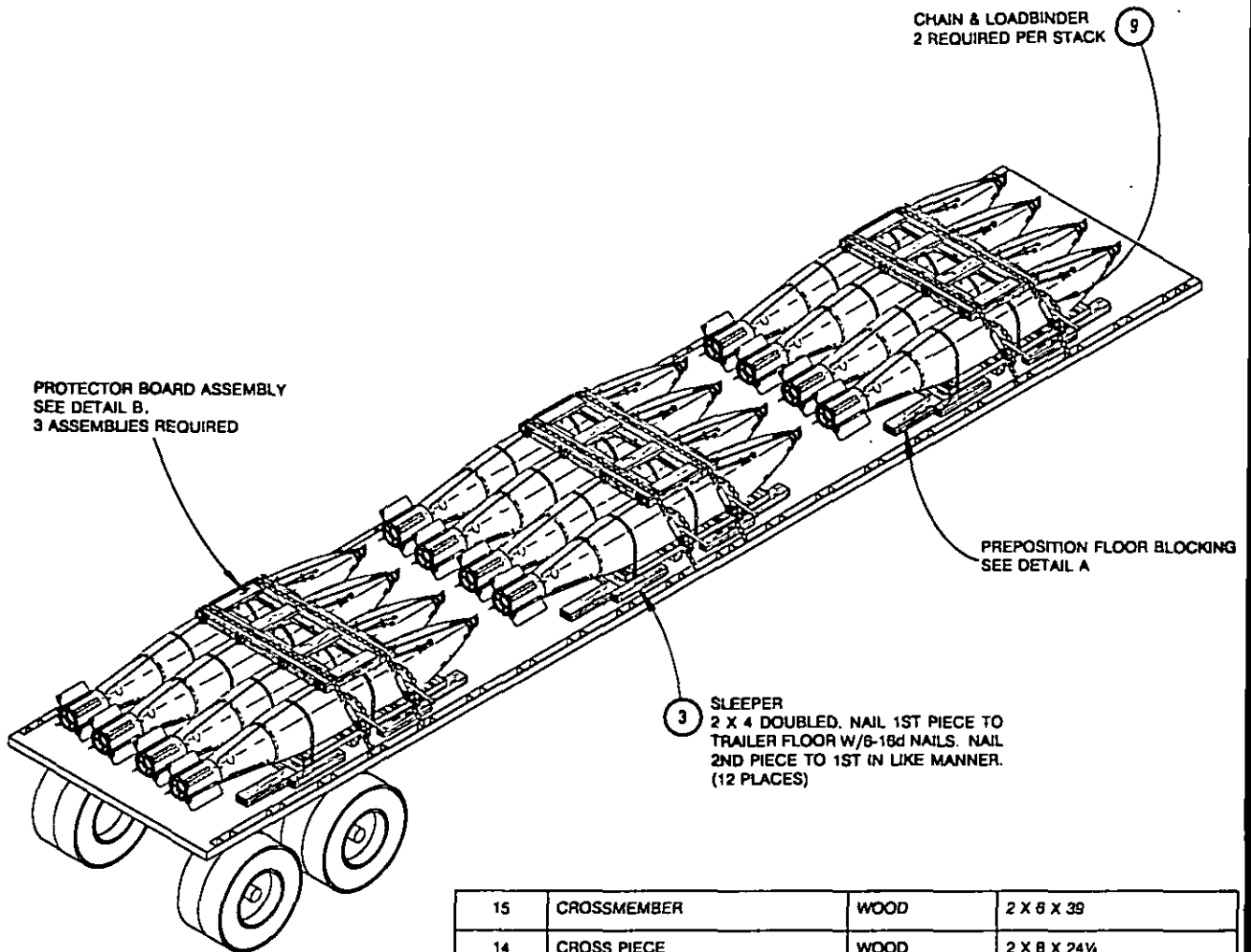
MIL-STD-1320-274 (NAVY)

GENERAL NOTES:

1. THIS DOCUMENT GIVES DETAILED INSTRUCTIONS FOR TRUCKLOADING THE MK 64 UNDERWATER UNDERWATER MINE AND THE MK 41 DESTRUCTOR ON THE MK 78 PALLET ADAPTER BASE.
2. THE PROCEDURES DESCRIBED HEREIN ARE INTENDED FOR 14 FT AND LONGER FLATBED TRAILERS. DO NOT USE TRAILERS WITH ALL METAL FLOORS.
3. CHAINS AND STEEL STRAPPING MAY BE USED INTERCHANGEABLY ON A ONE-TO-ONE BASIS FOR TIEDOWNS.
4. STEEL STRAPPING USED AS TIEDOWNS SHALL BE 2 X .050 AND SHALL CONFORM TO AND BE APPLIED AS SPECIFIED IN THE GENERAL TRUCKLOADING DOCUMENT, MIL-STD-1320 (NAVY).
5. CHAINS, FITTINGS, AND LOAD BINDERS SHALL CONFORM TO AND BE APPLIED AS SPECIFIED IN THE GENERAL TRUCKLOADING DOCUMENT, MIL-STD-1320 (NAVY), EXCEPT THAT THE CHAIN/GRAB HOOKS SHALL BE ATTACHED TO THE STAKE POCKETS (NOT AROUND THE RUB RAIL).
6. PROTECTOR BOARDS (DOUBLED 2 X 6'S) SHALL BE USED UNDER THE TIEDOWNS. STEEL STRAPS SHALL BE SECURED TO THE PROTECTOR BOARDS USING 2-INCH STRAPPING STAPLES. WHEN USING CHAIN, THE CHAINS SHALL BE SECURED TO THE PROTECTOR BOARD BY DRIVING A 10d NAIL THROUGH THE CHAIN LINK AND CLINCHING THE NAIL OVER THE CHAIN. FIVE STAPLES/NAILS SHALL BE USED FOR EACH TIEDOWN.
7. THE MAXIMUM NUMBER OF UNIT LOADS THAT CAN BE LOADED ONTO A TRAILER IS:

14 THRU 26 FT TRAILERS - 2 UNIT LOADS
27 THRU 39 FT TRAILERS - 4 UNIT LOADS
40 FT AND LONGER TRAILERS - 6 UNIT LOADS

8. PRIOR TO LOADING THE TRAILER AND DURING PRELOADING INSPECTION REQUIRED BY NAVSEA OP 2165 AND REPORTED ON DD FORM 626, THE CHAINS, FITTINGS, AND LOAD BINDERS SHALL BE INSPECTED FOR STRETCH, GOUGING, BENT LINKS, WEAR, AND ANY OTHER NOTICEABLE DEFECTS. THE INSPECTOR SHALL CONFIRM THAT THE CHAINS, FITTINGS, AND LOAD BINDERS HAVE BEEN INSPECTED AND SHALL SO NOTE IN ITEM NO. 22 OF DD FORM 626. ANY DEFICIENCY SHALL BE CAUSE FOR REJECTION OF A CHAIN OR LOAD BINDER.
9. UNLESS OTHERWISE SPECIFIED, DUNNAGE LUMBER, STEEL STRAPPING, STRAP SEALS, AND NAILS SHALL BE AS SPECIFIED IN THE GENERAL TRUCKLOADING DOCUMENT MIL-STD-1320 (NAVY).
10. THE MAXIMUM GROSS WEIGHT OF THE TRACTOR-TRAILER AND THE ALLOWABLE AXLE WEIGHTS ARE THE RESPONSIBILITY OF THE CARRIER. THE CARRIER WILL ADVISE THE SHIPPER OF THESE LIMITATIONS, AND THE SHIPPER SHALL LOAD THE TRAILER IN SUCH A MANNER THAT THE TRACTOR-TRAILER WILL NOT EXCEED THESE LIMITATIONS.
11. AFTER THE BLOCKING, BRACING, AND TIEDOWNS HAVE BEEN INSPECTED, THE LOAD SHALL BE COMPLETELY COVERED WITH FIRE RESISTANT, WATERPROOF TARPULINS.
12. AFTER THE TARPULINS ARE IN PLACE, ATTACH THE PROPER EXPLOSIVES PLACARDS TO BOTH SIDES, FRONT, AND BACK OF THE TRAILER, AND ATTACH THE SHIPPING DOCUMENTS TO AN ACCESSIBLE AREA ON THE BACK DECK OF THE TRAILER.
13. FOR GENERAL TRUCKLOADING PROCEDURES REFER TO THE GENERAL TRUCKLOADING DOCUMENT MIL-STD-1320 (NAVY).



15	CROSSMEMBER	WOOD	2 X 8 X 39
14	CROSS PIECE	WOOD	2 X 8 X 24 1/2
13	CROSS PIECE	WOOD	2 X 6 X 24 1/2
12	STRAP SEAL	STEEL	1 1/2" SIZE
11	UNITIZING STRAP	STEEL	1 1/4 X .035 X 6 FT
10	MK 79 ADAPTER (BOTTOM FRAME)	2642647	
9	CHAIN & LOADBINDER OR STEEL STRAPPING	STEEL	
8	SIDE LUG STOPS	WOOD	2 X 3"(EXACT) X 33
7	LUG STOPS	WOOD	2 X 4 X TO SUIT
6	STRUT	WOOD	2 X 6 X 17 1/2
5	CROSS PIECE	WOOD	2 X 6 X 62 1/2
4	CROSS PIECE	WOOD	2 X 8 X 62 1/2
3	SLEEPER	WOOD	2 X 4 X 24
2	BACKUP CLEAT	WOOD	2 X 6 X 30
1	CROSSMEMBER	WOOD	2 X 6 X 78
ITEM	DESCRIPTION	MAT'L/DWG	DIMENSIONS

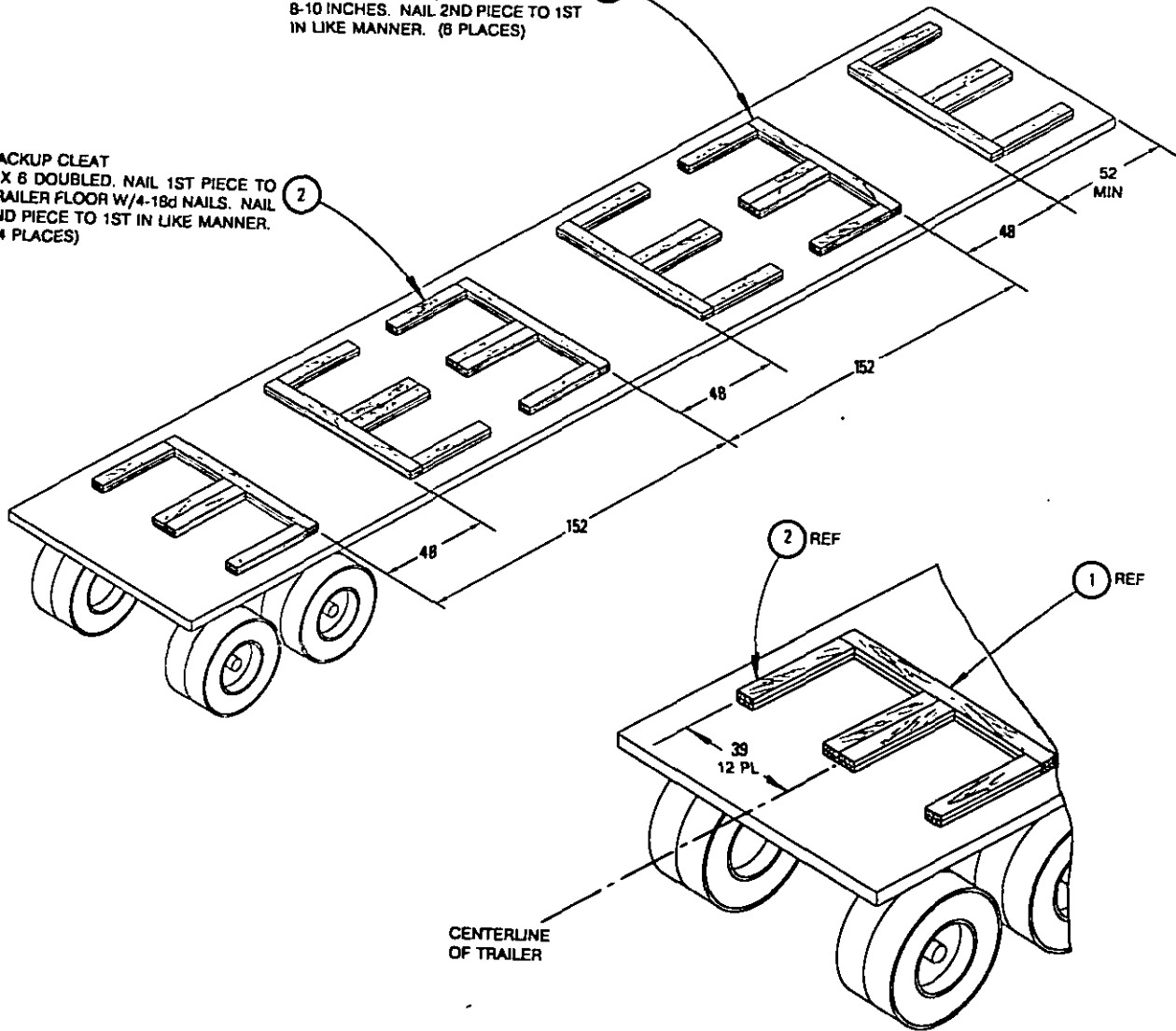
MIL-STD-1320-274 (NAVY)

CROSSMEMBER
2 X 6 DOUBLED. NAIL 1ST PIECE TO TRAILER FLOOR W/1-16d NAIL EVERY 8-10 INCHES. NAIL 2ND PIECE TO 1ST IN LIKE MANNER. (8 PLACES)

1

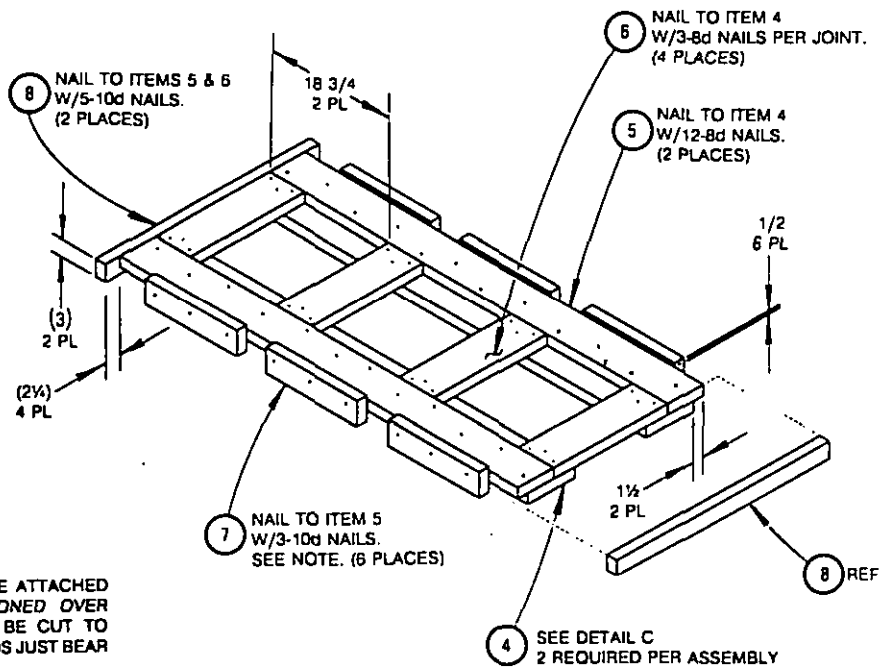
BACKUP CLEAT
2 X 8 DOUBLED. NAIL 1ST PIECE TO TRAILER FLOOR W/4-18d NAILS. NAIL 2ND PIECE TO 1ST IN LIKE MANNER. (24 PLACES)

2



PREPOSITION FLOOR BLOCKING

DETAIL **A**

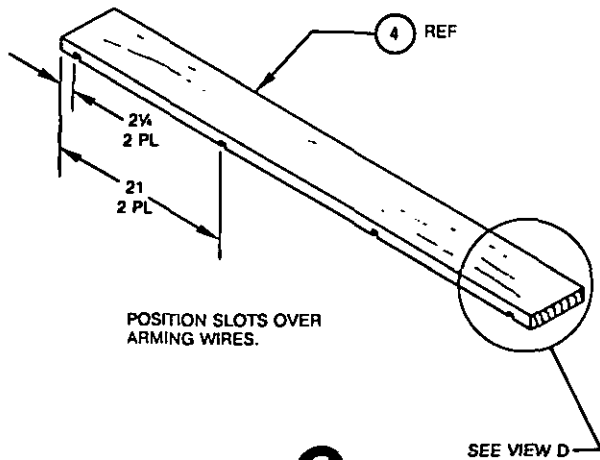


NOTE

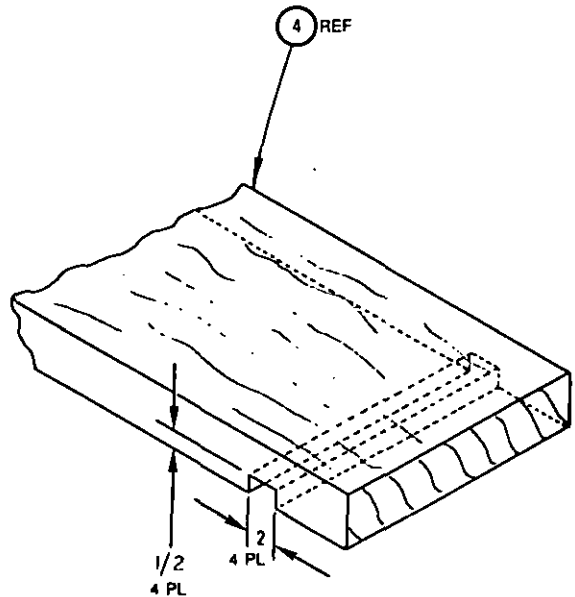
LUG STOPS, ITEM 7, SHALL BE ATTACHED AFTER ASSEMBLY IS POSITIONED OVER BOMBS. LUG STOPS SHALL BE CUT TO LENGTH SUCH THAT THEIR ENDS JUST BEAR AGAINST THE LUGS.

DETAIL B

PROTECTOR BOARD ASSEMBLY



DETAIL C



VIEW D

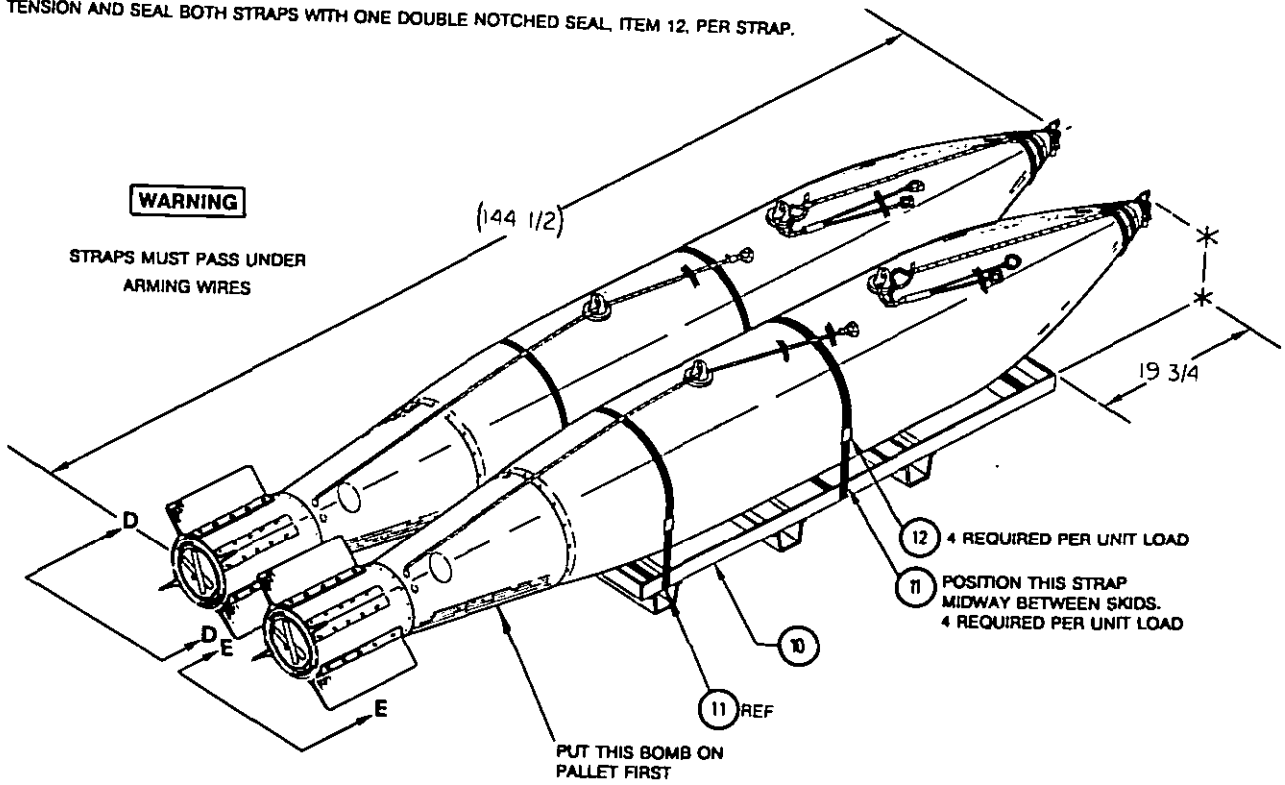
MIL-STD-1320-274 (NAVY)

PALLETIZING PROCEDURE

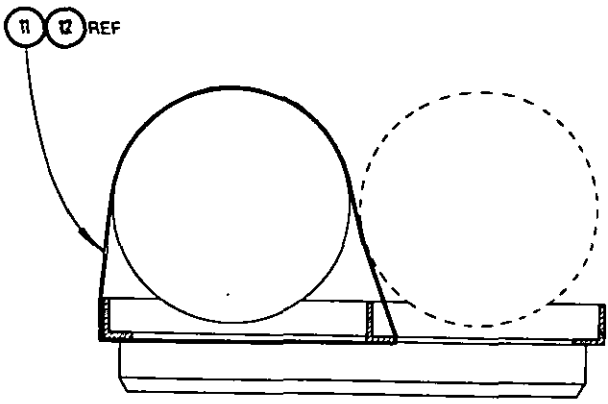
- (A) POSITION ONE BOMB ON RIGHT HAND SIDE OF PALLET, ITEM 10, WITH BOMB LUGS FACING STRAIGHT UP.
- (B) THREAD STRAPPING, ITEM 11 (TWO STRAPS PER BOMB), UNDERNEATH PALLET AND OVER RIGHT HAND BOMB AS SHOWN IN MAIN SKETCH AND IN VIEW E-E. STRAPS MUST PASS UNDER ARMING WIRES.
- (C) TENSION AND SEAL BOTH STRAPS WITH ONE DOUBLE NOTCHED SEAL, ITEM 12, PER STRAP.
- (D) PREPOSITION TWO STRAPS, ITEM 11, FOR LEFT HAND BOMB AS SHOWN IN VIEW D-D.
- (E) PLACE LEFT HAND BOMB ON PALLET.
- (F) POSITION STRAPS OVER BOMB (UNDER ARMING WIRES) AS SHOWN IN MAIN SKETCH AND VIEW D-D.
- (G) TENSION AND SEAL BOTH STRAPS WITH ONE DOUBLE NOTCHED SEAL, ITEM 12, PER STRAP.

WARNING

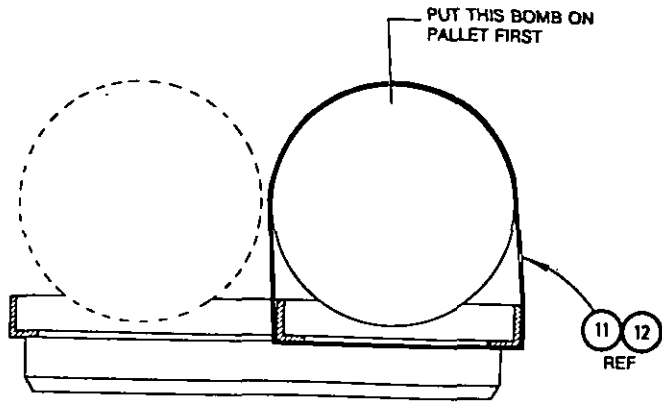
THE PALLETIZATION OF MINES/DESTRUCTORS IN ACCORDANCE WITH THE METHODS SHOWN ON THIS PAGE IS AUTHORIZED FOR TRUCKLOADING PURPOSES ONLY. ANY MOVEMENT OF MINES/DESTRUCTORS PALLETIZED IN THIS MANNER IS LIMITED TO THAT NECESSARY TO LOAD AND UNLOAD THE TRAILER.



- (12) 4 REQUIRED PER UNIT LOAD
- (11) POSITION THIS STRAP MIDWAY BETWEEN SKIDS. 4 REQUIRED PER UNIT LOAD

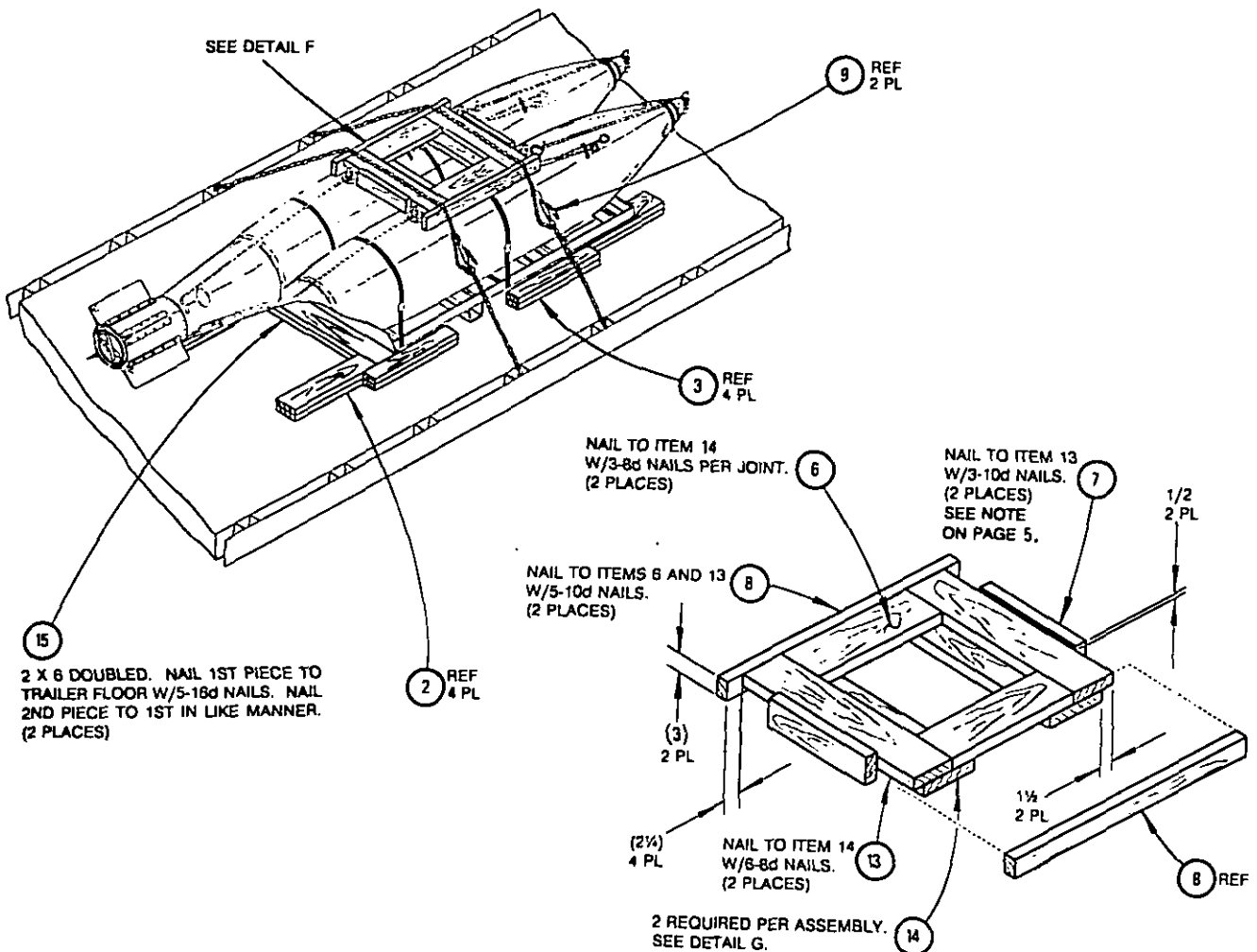


VIEW D-D
STRAPPING ROUTE FOR LEFT HAND BOMB
DETAIL OF FINS OMITTED FOR CLARITY

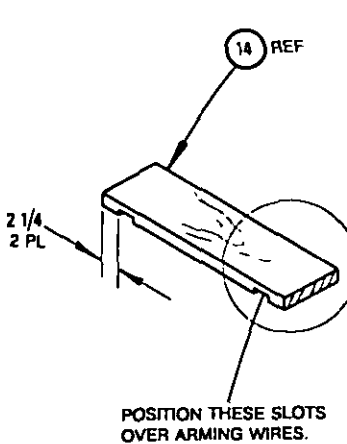


VIEW E-E
STRAPPING ROUTE FOR RIGHT HAND BOMB
DETAIL OF FINS OMITTED FOR CLARITY

LOADING AND BRACING FOR SINGLE PALLET

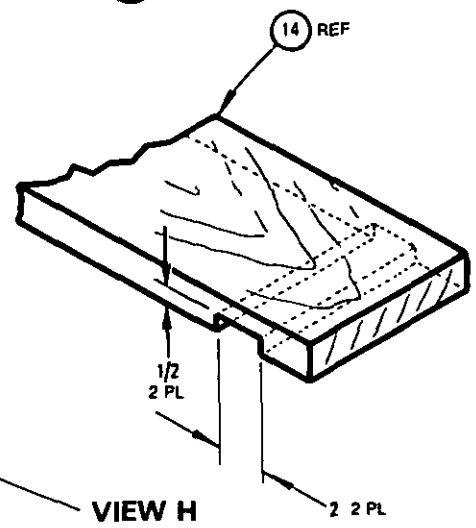


DETAIL F



DETAIL G

SEE VIEW H



VIEW H

PREPARING ACTIVITY:
NAVY-OS