

MILITARY STANDARD

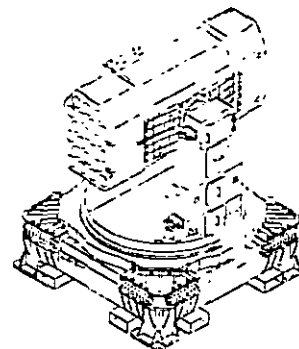
MIL-STD-1320-272

TRUCKLOADING

(NAVY)

28 JUNE 1993

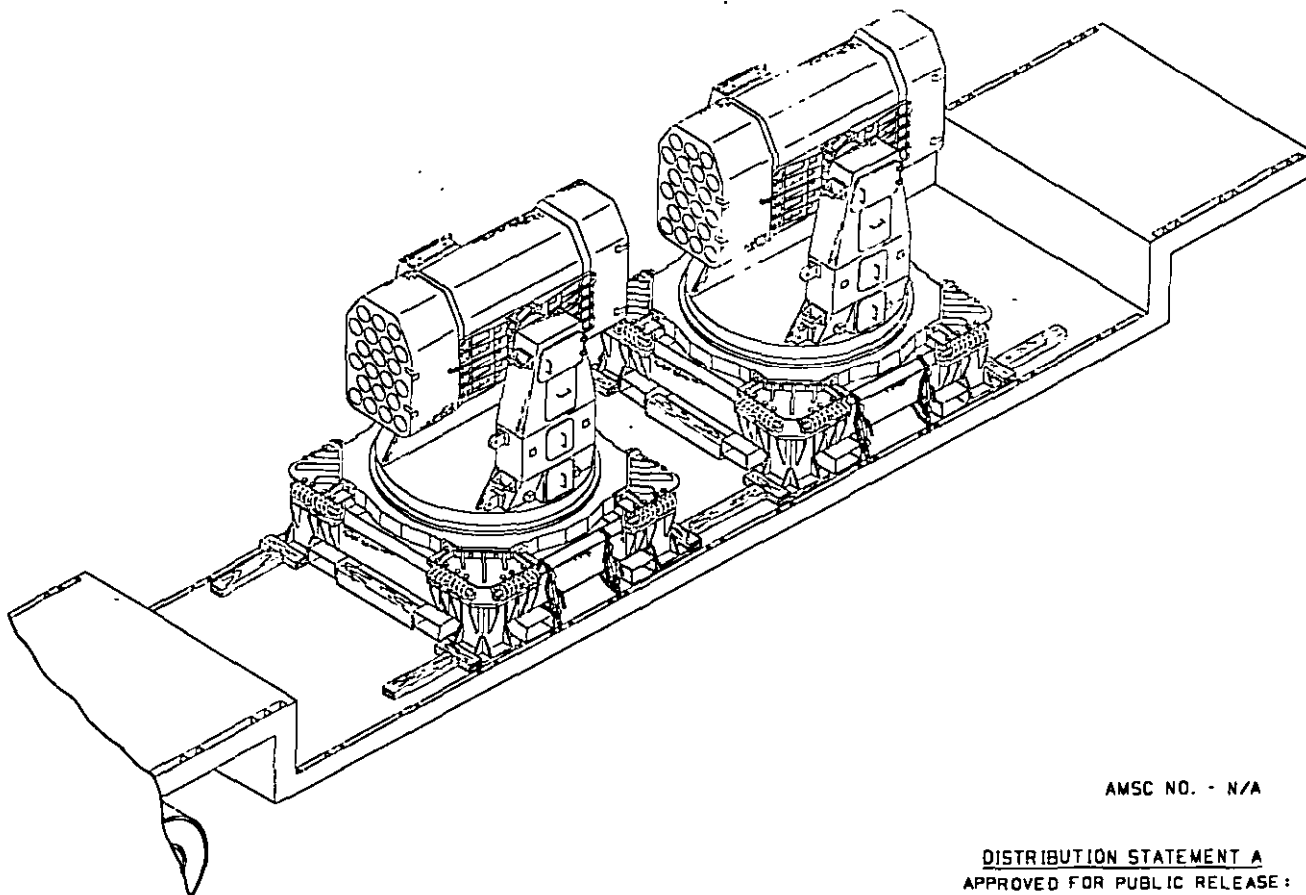
GUIDED MISSILE LAUNCHER (GML) FOR ROLLING AIRFRAME MISSILE SYSTEM (RAM) ON TRANSPORTATION SKID, DWG NO. 6660272



LAUNCHER DATA:

DIMENSIONS:

LENGTH 101
 WIDTH 101
 HEIGHT 138.73
 CUBE 807.17
 WEIGHT 9,001 LBS



AMSC NO. - N/A

DISTRIBUTION STATEMENT A
APPROVED FOR PUBLIC RELEASE:
DISTRIBUTION IS UNLIMITED.

NOTES:

1. UNLESS OTHERWISE SPECIFIED, DIMENSIONS ARE IN INCHES.
2. FOR CROSS REFERENCE TO ASSOCIATED PALLETIZING, CONTAINERLOADING AND CARLOADING MILITARY STANDARDS, REFER TO INDEX TO STANDARDS, MIL-HDBK-236 (NAVY).

FSC 8140

REV LTR	REVISION DESCRIPTION	DATE	TDA	SYSCOM
			APPROVAL	

AUTHORIZED AND RELEASED
FOR HIGHWAY SHIPMENT ONLY.

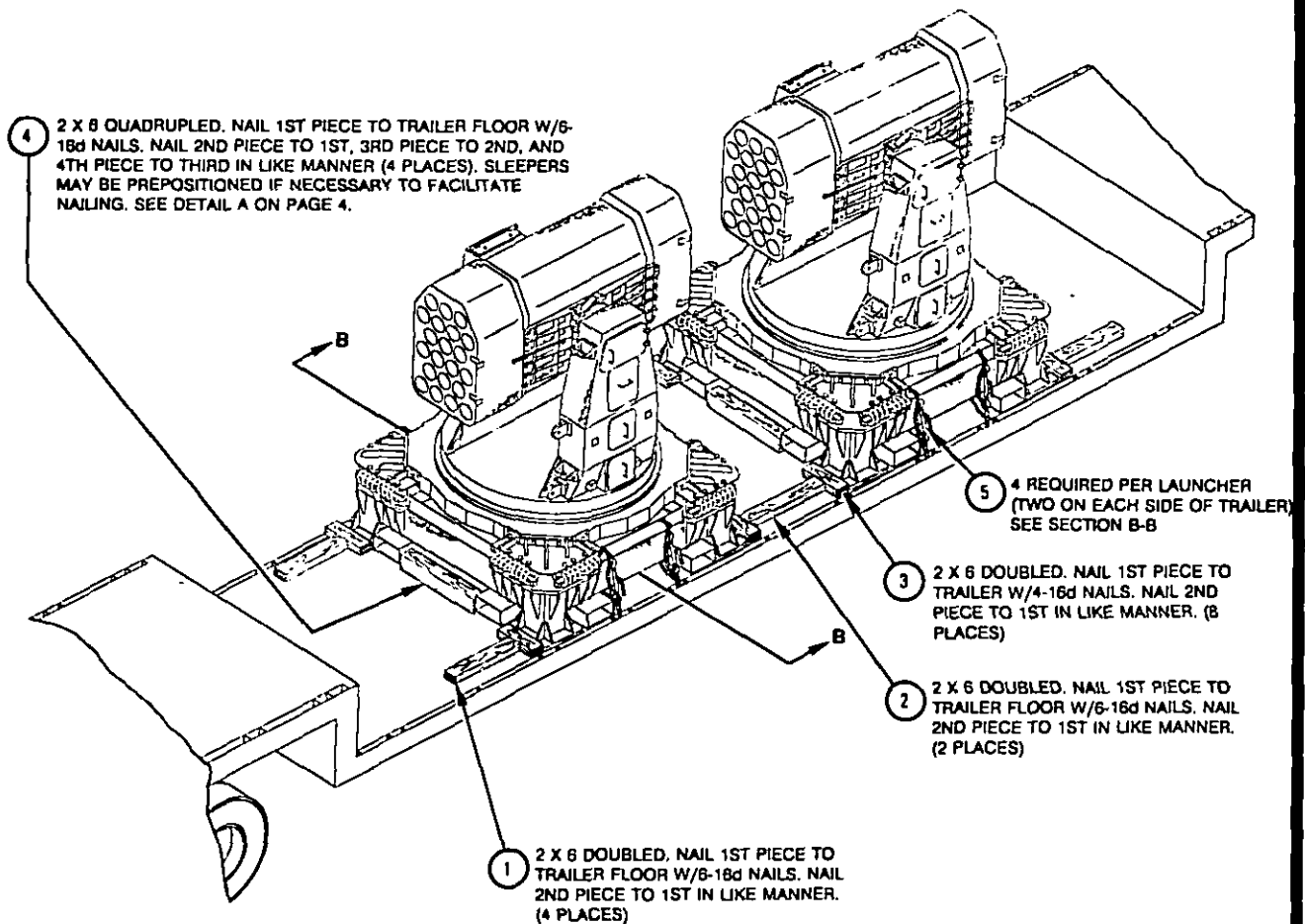
Ronald 6-25-93
 SIGNATURE TDA, WPNSTA EARLE DATE
L. Collins 6-25-93
 SIGNATURE AIRSYSCOM BY DIRECTION DATE

ORIGINATOR *g a w* 93/6/24
 DATE
 WPNSTA EARLE, NEW JERSEY

MIL-STD-1320-272 (NAVY)**GENERAL NOTES:**

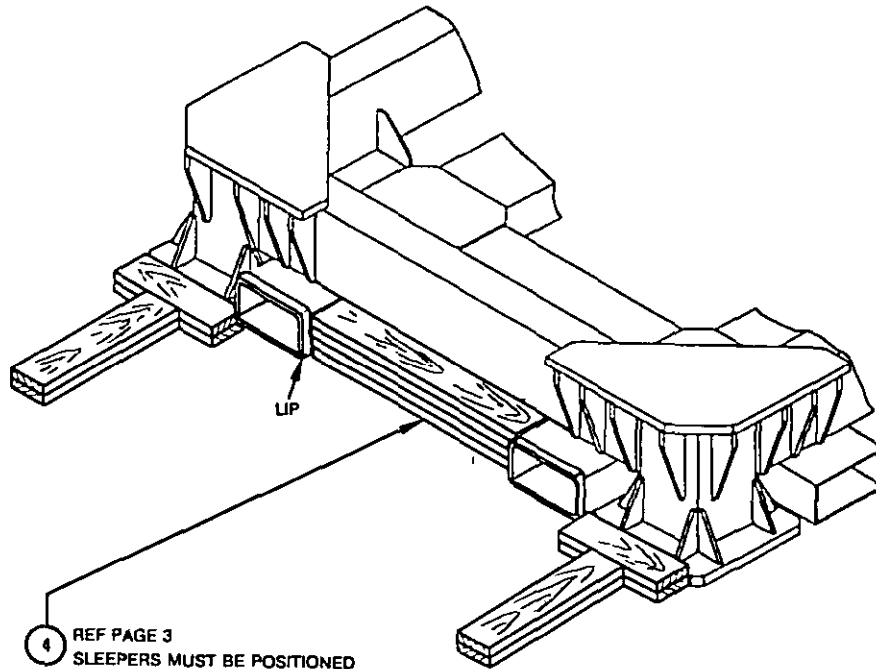
1. THIS DOCUMENT GIVES DETAILED INSTRUCTIONS FOR TRUCKLOADING THE GUIDED MISSILE LAUNCHER (GML) FOR THE ROLLING AIRFRAME MISSILE SYSTEM (RAM) ON ITS TRANSPORTATION SKID.
2. THE PROCEDURES DESCRIBED HEREIN ARE INTENDED FOR 102'-WIDE "LOWBOY" FLATBED TRAILERS. THE TRAILER FLOOR SHALL BE LOW ENOUGH TO ENSURE THAT THE LOAD DOES NOT EXCEED MAXIMUM HEIGHT LIMITATIONS FOR THE INTENDED ROUTE. IF A LOW ENOUGH TRAILER IS NOT AVAILABLE, PROPER WAIVERS WILL HAVE TO BE OBTAINED. DO NOT USE TRAILERS WITH ALL METAL FLOORS.
3. CHAINS AND LOADBINDERS ONLY SHALL BE USED FOR TIEDOWNS. STEEL STRAPPING IS NOT PERMITTED. CHAINS, FITTINGS, AND LOAD BINDERS SHALL CONFORM TO THE REQUIREMENTS OF THE GENERAL TRUCKLOADING DOCUMENT MIL-STD-1320 (NAVY) AND BE APPLIED AS SHOWN IN SECTION B-B ON PAGE 4 OF THIS DOCUMENT.
4. FOUR TIEDOWNS SHALL BE USED FOR EACH LAUNCHER.
5. EVEN THOUGH THE ILLUSTRATION ON PAGE 3 OF THIS DOCUMENT SHOWS TWO LAUNCHERS LOADED ONTO THE TRAILER, A TRUCKLOAD MAY ALSO CONTAIN ONE OR THREE LAUNCHERS IF SPACE PERMITS. LAUNCHERS SHALL BE CENTRALLY LOCATED ON THE TRAILER.
6. PRIOR TO LOADING, THE TRAILER SHALL BE INSPECTED AND THE INSPECTION REPORTED ON DD FORM 828 AS REQUIRED BY NAVSEA SW020-AC-SAF 010/020.
7. UNLESS OTHERWISE SPECIFIED, DUNNAGE LUMBER AND NAILS SHALL BE AS SPECIFIED IN THE GENERAL TRUCKLOADING DOCUMENT MIL-STD-1320 (NAVY).
8. THE MAXIMUM GROSS WEIGHT OF THE TRACTOR-TRAILER AND THE ALLOWABLE AXLE WEIGHTS ARE THE RESPONSIBILITY OF THE CARRIER. THE CARRIER WILL ADVISE THE SHIPPER OF THESE LIMITATIONS, AND THE SHIPPER SHALL LOAD THE TRAILER IN SUCH A MANNER THAT THE TRACTOR-TRAILER WILL NOT EXCEED THESE LIMITATIONS.
9. AFTER THE BLOCKING, BRACING, AND TIEDOWNS HAVE BEEN INSPECTED, THE LAUNCHERS SHALL BE COMPLETELY COVERED WITH FIRE RESISTANT, WATERPROOF TARPULINS.
10. FOR GENERAL TRUCKLOADING PROCEDURES REFER TO THE GENERAL TRUCKLOADING DOCUMENT MIL-STD-1320 (NAVY).

FTL FLATBED ("LOWBOY")
102' - WIDE



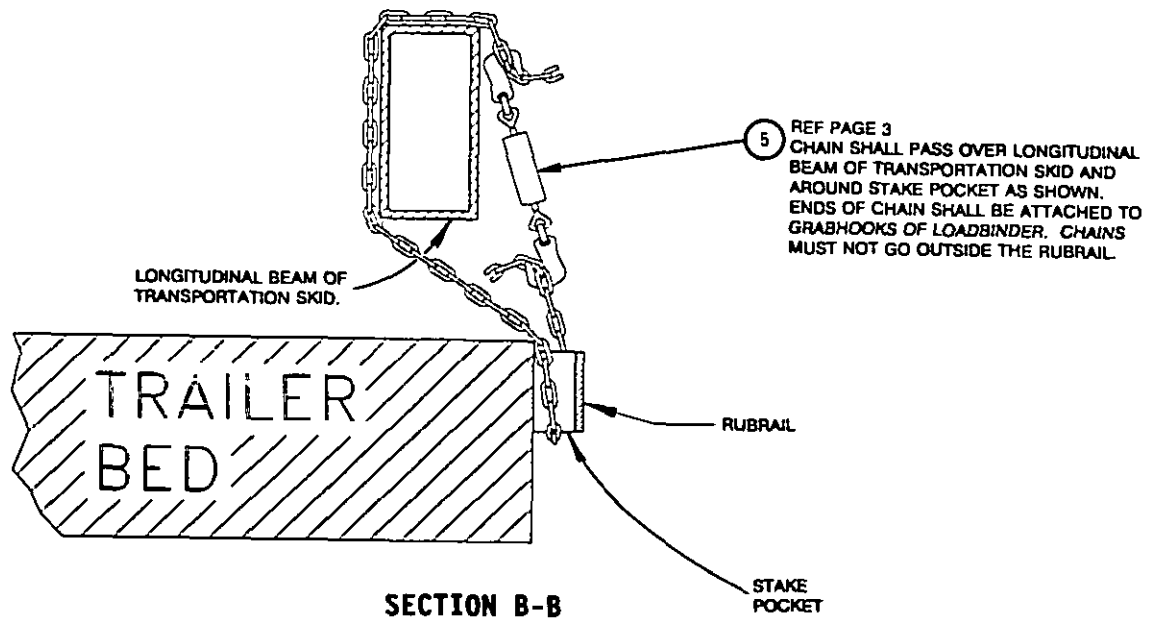
5	CHAIN & LOADBINDER	STEEL	
4	SLEEPER	WOOD	2 X 6 X 38
3	CROSSMEMBER	WOOD	2 X 6 X 17
2	BACKUP CLEAT, CENTER	WOOD	2 X 6 X 38 MIN
1	BACKUP CLEAT, END	WOOD	2 X 6 X 24
ITEM	DESCRIPTION	MAT'L/DWG	DIMENSIONS
LIST OF MATERIALS			PAGE 3

MIL-STD-1320-272 (NAVY)



4 REF PAGE 3
SLEEPERS MUST BE POSITIONED
INSIDE LIP AT END OF FORK
POCKET AS SHOWN.

DETAIL A



5 REF PAGE 3
CHAIN SHALL PASS OVER LONGITUDINAL
BEAM OF TRANSPORTATION SKID AND
AROUND STAKE POCKET AS SHOWN.
ENDS OF CHAIN SHALL BE ATTACHED TO
GRABHOOKS OF LOADBINDER. CHAINS
MUST NOT GO OUTSIDE THE RUBRAIL.

SECTION B-B

SHOWING ROUTE FOR TIEDOWN CHAINS. DETAIL OF
LAUNCHER AND NON-RELEVANT PORTIONS OF
TRANSPORTATION SKID OMITTED FOR CLARITY.