

MILITARY STANDARD

TRUCKLOADING

MIL-STD-1320-231
(NAVY)

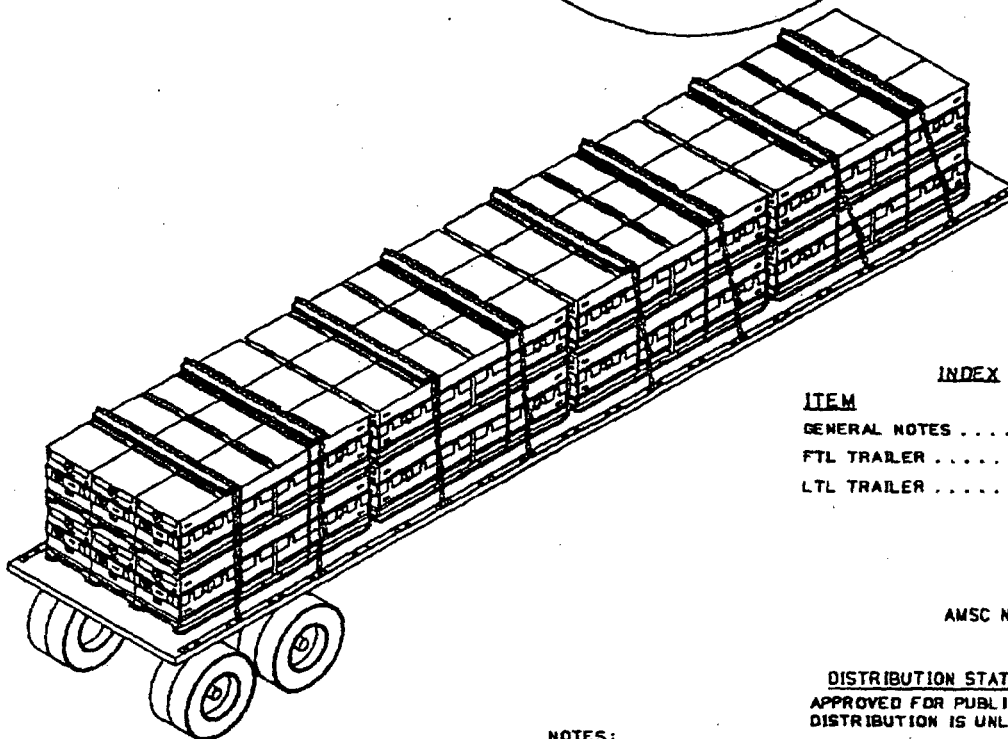
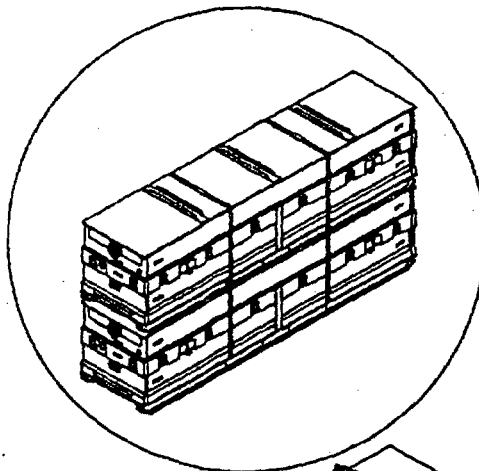
24 August 1990

GUIDED MISSILE, AGM-136A (TACIT RAINBOW)
IN SHIPPING AND STORAGE CONTAINER, CNU-432/E
UNIT LOAD FOR UNDERWAY REPLENISHMENT

UNIT LOAD DATA

UNIT LOAD DOCUMENT MIL-STD-1323-342
DIMENSIONS III 1/4 L X 25 1/4 W X 59 1/4 H
GROSS WEIGHT 1705 LBS Δ
CUBE 96.3 CU FT
Δ DO NOT USE FOR SHIPPING WEIGHT

| HAZARD CLASSIFICATION | | |
|-----------------------|-----------|---------|
| DODIC/MALC | ITEM NAME | DOT |
| PE37 | AGM-136A | CLASS A |



| ITEM | INDEX | PAGE |
|-------------------------|-------|-------|
| GENERAL NOTES | | 2 |
| FTL TRAILER | | 2 & 3 |
| LTL TRAILER | | 4 & 5 |

AMSC NO. - N/A

DISTRIBUTION STATEMENT A
APPROVED FOR PUBLIC RELEASE:
DISTRIBUTION IS UNLIMITED.

NOTES:

1. UNLESS OTHERWISE SPECIFIED, DIMENSIONS ARE IN INCHES.
2. FOR CROSS REFERENCE TO ASSOCIATED PALLETIZING, CONTAINERLOADING AND CARLOADING MILITARY STANDARDS, REFER TO INDEX TO STANDARDS, MIL-HDBK-236 (NAVY).

| REV LTR | REVISION DESCRIPTION | DATE | TDA | SYSCOM |
|------------|----------------------|------|----------|--------|
| | | | APPROVAL | |

FSC 8140

AUTHORIZED AND RELEASED
FOR HIGHWAY SHIPMENT ONLY.

SIGNATURE E. Linn DATE 8/22/90
TDA, WPNSTA EARLE
SIGNATURE K. Caron DATE 8/24/90
AIRSYSCOM BY DIRECTION DATE

ORIGINATOR A. Bender DATE 8/15/90

WPNSTA EARLE, NEW JERSEY

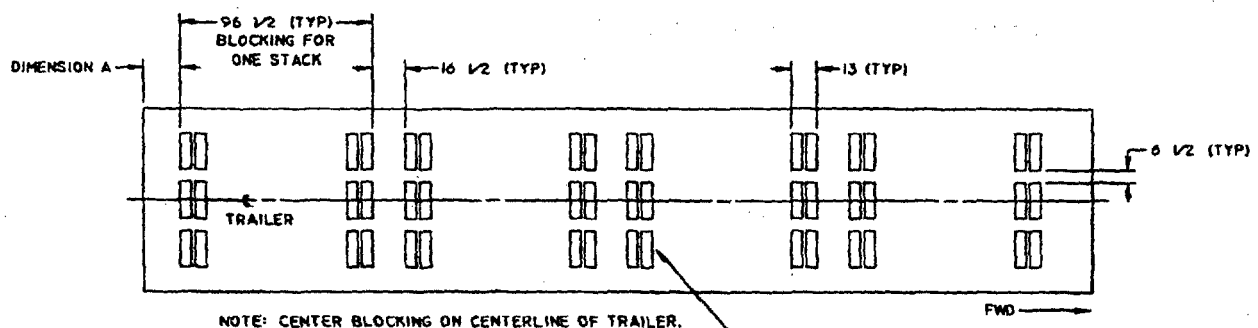
PAGE 1 OF 5

MIL-STD-1320-231 (NAVY)

GENERAL NOTES

1. THIS DOCUMENT GIVES DETAILED INSTRUCTIONS FOR TRUCKLOADING UNIT LOADS FOR UNDERWAY REPLENISHMENT OF GUIDED MISSILE, AGM-136A (TACIT RAINBOW) IN CONTAINER, CNU-432/E. WHEN THE CONTAINERS ARE UNITIZED IN ACCORDANCE WITH MIL-STD-1323-342 (NAVY).
2. THE PROCEDURES DESCRIBED HEREIN ARE INTENDED FOR 40 FT THROUGH 48 FT FLATBED TRAILERS. DO NOT USE TRAILERS WITH METAL FLOORS.
3. CHAINS AND STEEL STRAPPING MAY BE USED INTERCHANGEABLY ON A ONE TO ONE BASIS FOR TIE DOWNS.
4. STEEL STRAPPING USED AS TIE DOWNS SHALL BE 2 X .050 AND SHALL CONFORM TO AND BE APPLIED AS SPECIFIED IN THE GENERAL TRUCKLOADING DOCUMENT, MIL-STD-1320 (NAVY).
5. CHAINS, FITTINGS AND LOAD BINDERS SHALL CONFORM TO AND BE APPLIED AS SPECIFIED IN THE GENERAL TRUCKLOADING DOCUMENT, MIL-STD-1320 (NAVY) EXCEPT THAT THE CHAIN/GRAB HOOKS SHALL BE ATTACHED TO THE STAKE POCKETS (NOT AROUND THE RUB RAIL).
6. PROTECTOR BOARDS (DOUBLED 2 X 6'S) SHALL BE USED UNDER THE TIE DOWNS. WHEN USING STEEL STRAPPING, THE STRAPS SHALL BE STAPLED TO THE PROTECTOR BOARD USING 2 INCH STRAPPING STAPLES. WHEN USING CHAIN, THE CHAINS SHALL BE SECURED TO THE PROTECTOR BOARD BY DRIVING A 10 d NAIL THROUGH THE CHAIN LINK AND CLINCHING THE NAIL OVER THE CHAIN. FIVE STAPLES/NAILS SHALL BE USED FOR EACH TIE DOWN.
7. PRIOR TO LOADING THE TRAILER AND DURING PRELOADING INSPECTION, REQUIRED BY NAVSEA DP 2165 AND REPORTED ON DD FORM 626, THE CHAINS, FITTINGS AND LOAD BINDERS SHALL BE INSPECTED FOR STRETCH, GOUGING, BENT LINKS, WEAR AND ANY OTHER NOTICEABLE DEFECTS. THE INSPECTOR SHALL CONFIRM THAT THE CHAINS, FITTINGS AND LOAD BINDERS HAVE BEEN INSPECTED AND SHALL SO NOTE IN ITEM NO. 22 OF DD FORM 626. ANY DEFICIENCY SHALL BE CAUSE FOR REJECTION OF A CHAIN OR LOAD BINDER.
8. UNLESS OTHERWISE SPECIFIED DUNNAGE LUMBER, STEEL STRAPPING, STRAP SEALS AND NAILS SHALL BE AS SPECIFIED IN THE GENERAL TRUCKLOADING DOCUMENT, MIL-STD-1320 (NAVY).
9. THE MAXIMUM GROSS WEIGHT OF THE TRACTOR-TRAILER AND THE ALLOWABLE AXLE WEIGHTS ARE THE RESPONSIBILITY OF THE CARRIER. THE CARRIER WILL ADVISE THE SHIPPER OF THESE LIMITATIONS AND THE SHIPPER SHALL LOAD THE TRAILER IN SUCH A MANNER THAT THE TRACTOR-TRAILER WILL NOT EXCEED THESE LIMITATIONS.
10. AFTER THE BLOCKING, BRACING AND TIE DOWNS HAVE BEEN INSPECTED, THE CONTAINERS SHALL BE COMPLETELY COVERED WITH FIRE RESISTANT WATERPROOF TARPULINS. THE TARPULINS MAY BE UNDER THE TIE DOWNS.
11. AFTER THE TARPULINS ARE IN PLACE, ATTACH 'EXPLOSIVES A' PLACARDS TO BOTH SIDES, FRONT AND BACK OF THE TRAILER AND ATTACH THE SHIPPING DOCUMENTS TO AN ACCESSABLE AREA ON THE BACK DECK OF THE TRAILER.
12. FOR GENERAL TRUCKLOADING PROCEDURES REFER TO THE GENERAL TRUCKLOADING DOCUMENT, MIL-STD-1320 (NAVY).

FTL 40 FT THROUGH 48 FT TRAILER (FLATBED)



| TRAILER LENGTH | DIMENSION A |
|----------------|-------------|
| 40 FT | 20 |
| 42 FT | 36 |
| 44 FT | 48 |
| 45 FT | 54 |
| 48 FT | 74 |

① 2 X 6 DOUBLED. NAIL 1ST PIECE TO TRAILER FLOOR W/4-16d NAILS. NAIL 2ND PIECE TO 1ST IN LIKE MANNER.

DETAIL **A**

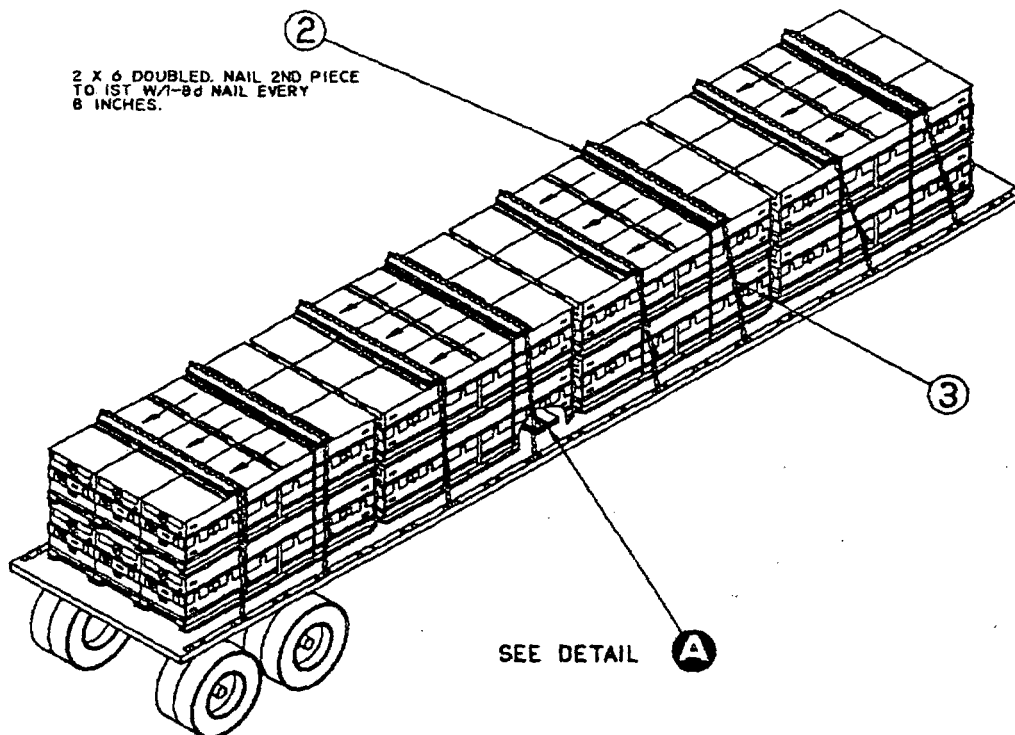
MIL-STD-1320-231 (NAVY)

NOTE

TARPAULINS OVER
CONTAINERS OMITTED
FOR CLARITY.

NOTE

DIRECTION OF ARROW
INDICATES FORWARD
END OF CONTAINER

**TRUCKLOAD DATA**

NUMBER OF UNIT LOADS 12

WEIGHT 20460 LBS Δ

Δ DO NOT USE FOR SHIPPING WEIGHT

| 8 | 3 | CHAIN AND LOAD BINDER | SEE NOTE 5 ON PAGE 2 | 5/16 DR 3/8 |
|-------------------|------|------------------------------|-------------------------|----------------|
| 16 | 2 | PROTECTOR BOARD | SEE NOTE 6 ON PAGE 2 | 2 X 6 X 75 3/4 |
| 96 | 1 | PREPOSITIONED CROSSMEMBER | SEE NOTE 8 ON PAGE 2 | 2 X 6 X 19 |
| REQ'D | ITEM | DESCRIPTION | MAT'L/DWG | DIMENSIONS |
| LIST OF MATERIALS | | | | |

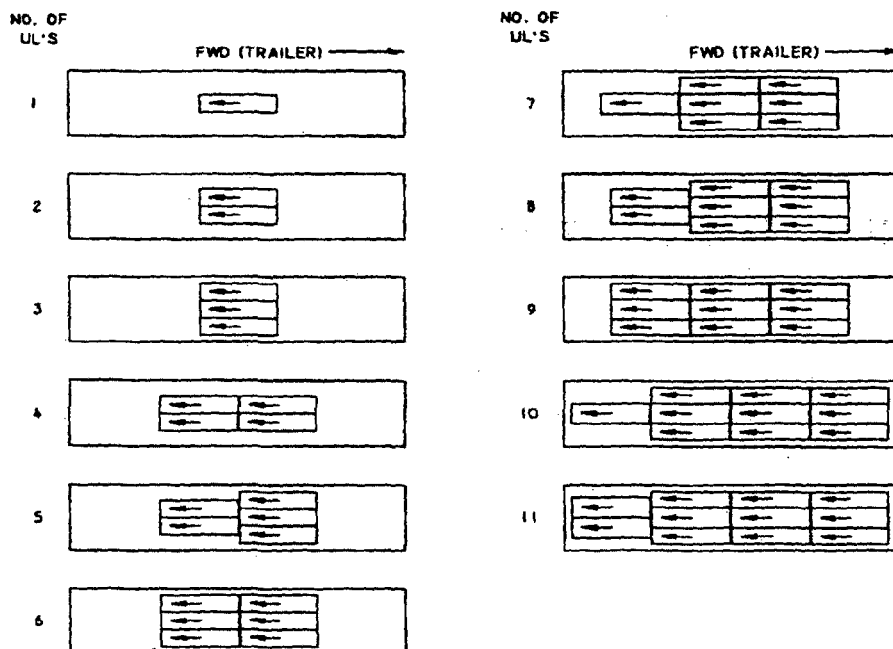
FTL 40 FT THROUGH 48 FT TRAILER (FLATBED)
(40 FT TRAILER SHOWN)

MIL-STD-1320-231 (NAVY)

LTL 40 FT THROUGH 48 FT TRAILERS (FLATBED)

1. WHEN REQUIRED TO SHIP LESS-THAN-TRUCKLOAD, SELECT THE CORRECT LOAD PATTERN, FOR THE NUMBER OF UNIT LOADS TO BE SHIPPED, FROM TABLE 1.
2. POSITION UNIT LOADS ON THE TRAILER AS SHOWN IN TABLE 1. BLOCK AND TIE DOWN USING THE PRINCIPLES SHOWN ON PAGES 3 AND 5 AND THE GENERAL DOCUMENT MIL-STD-1320 (NAVY).
3. THE LTL PLAN ON PAGE 5 SHOWS THE LESS-THAN-TRUCKLOAD METHODS FOR STACKS OF ONE AND TWO UNIT LOADS. FOR STACKS OF THREE UNIT LOADS, SEE PAGE 3.
4. WHEN USING LOAD PATTERNS WITH 1 OR 2 UNIT LOADS WIDE, CENTER THE PREPOSITIONED BLOCKING AND UNIT LOADS ON THE CENTER LINE OF THE TRAILER.

TABLE 1
LOAD PATTERN *



* LOAD PLAN SHOWS FLOOR PLAN FOR TRAILER.
ARROWS INDICATE FORWARD END OF CONTAINER.

MIL-STD-1320-231 (NAVY)

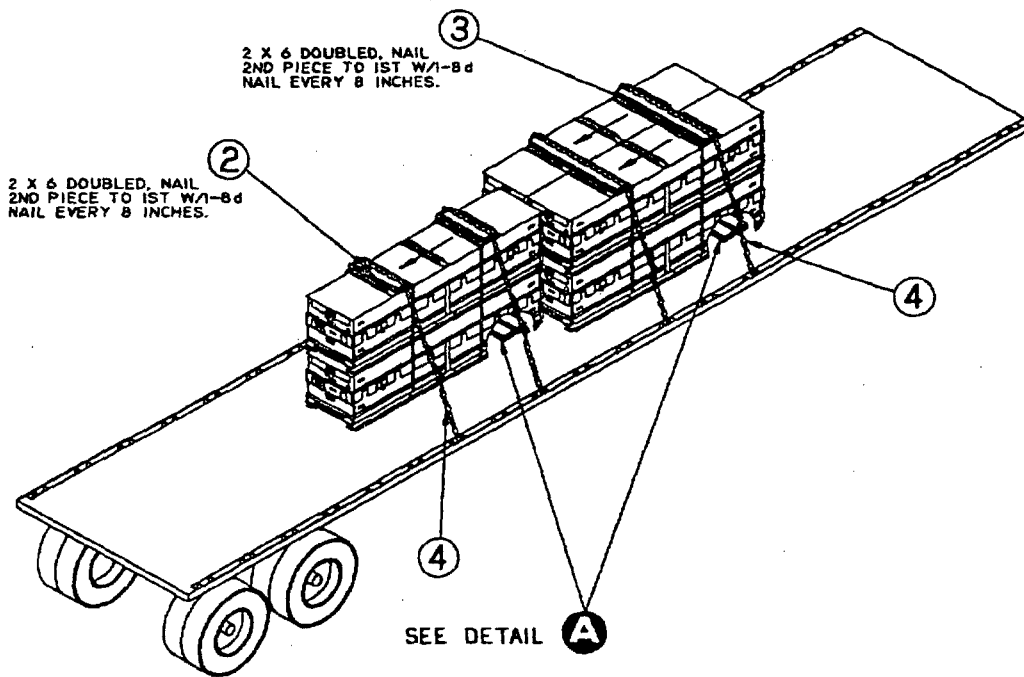
TYPICAL CONSTRUCTION FOR STACKS OF ONE AND TWO UNIT LOADS

NOTE

TARPAULINS OVER
CONTAINER OMITTED
FOR CLARITY

NOTE

DIRECTION OF ARROW
INDICATES FORWARD
END OF CONTAINER



| 2 UL'S | 1 UL | | | | |
|-------------------|---------|------|------------------------------|----------------------|----------------|
| 2 | 2 | 4 | CHAIN AND LOAD BINDER | SEE NOTE 5 PAGE 2 | 5/16 OR 3/8 |
| 4 | -- | 3 | PROTECTOR BOARD | SEE NOTE 6 PAGE 2 | 2 X 6 X 50 1/2 |
| -- | 4 | 2 | PROTECTOR BOARD | SEE NOTE 6 PAGE 2 | 2 X 6 X 25 1/4 |
| 16 | 8 | 1 | PREPOSITIONED CROSSMEMBER | SEE NOTE 8 PAGE 2 | 2 X 6 X 19 |
| REQ'D | REQ'D | ITEM | DESCRIPTION | MAT'L/DWG | DIMENSIONS |
| LIST OF MATERIALS | | | | | |

REVIEW ACTIVITY:
NAVY-OS, AS

PREPARING ACTIVITY:
NAVY-OS
IPROJECT NO. 8140-N7601

PAGE 5