

MIL-STD-1272 A  
6 May 1968

---

SUPERSEDING  
MIL-STD-1272  
5 May 1962

# MILITARY STANDARD

## DOOR HARDWARE, VEHICULAR



FSC 2540

MIL-STD-1272A  
6 May 1968

DEPARTMENT OF DEFENSE

DEFENSE SUPPLY AGENCY

WASHINGTON 25, D. C.

Door Hardware, Vehicular  
MIL-STD-1272A

1. This Military Standard is mandatory for use by all Departments and Agencies of the Department of Defense.
2. Recommended corrections, additions, or deletions should be addressed to the U. S. Army Tank-Automotive Command, ATTN: AMSTA-RSR, Warren, Michigan 48090.

MIL-STD-1272A  
6 May 1968

#### FOREWORD

This Military Standard covers hardware used on doors installed on van type bodies of tactical vehicles (trucks, trailers, and semitrailers). Hardware involves locks, handles, hinges, and associated items. The purpose of this Military Standard is to limit the selection of door hardware in engineering and design.

MIL-STD-1272A  
6 May 1968

## CONTENTS

	Page
1. SCOPE .....	1
1.1 Extent .....	1
1.2 Limitation .....	1
2. REFERENCED DOCUMENTS .....	1
2.1 Federal Specifications .....	1
Military Standards .....	1
3. DEFINITIONS .....	2
3.1 Seals .....	2
3.1.1 Heavy seal .....	2
3.1.2 Light or medium seal .....	2
3.2 Doors .....	2
3.2.1 Heavy door .....	2
3.2.2 Light or medium door .....	2
4. GENERAL REQUIREMENTS (Not Applicable) .....	2
5. DETAIL REQUIREMENTS .....	2
5.1 Dimensions .....	2
5.2 Finish .....	2
5.3 Door Hardware, Vehicular, table I .....	2

MIL-STD-1272A  
6 May 1968

## FIGURES

Figure	Page
1 Lock, Door, Van-Cam .....	11
2 Lock, Door, Van-Wedge Bolt .....	12
3 Lock, Door, Van-Slam Bolt .....	13
4 Lock, Door, Van-Slam Bolt, Two Piece .....	14
5 Handle, Door, Van, Outside, Heavy Duty .....	15
6 Handle, Door, Van, Outside, Medium Duty .....	16
7 Handle, Door, Van, Inside .....	17
8 Hinge, Continuous (Piano) .075 Thickness, .250 Pin Dia .....	18
9 Hinge, Door, Van, Flat Mounting .....	19
10 Hinge, Door, Van, Corner Mounting .....	20
11 Hinge, Door, Van, Medium Duty .....	21
12 Hold-Back, Door, Van .....	22
13 Hold-Back, Door, Van (Alternate Design) .....	23
14 Hold-Back, Door, Van (Alternate Design) .....	24
15 Bumper, Rubber, Van .....	25

\_\_\_\_\_

\_\_\_\_\_

MIL-STD-1272A  
6 May 1968

## 1. SCOPE

1.1 Extent. This military standard describes vehicular door hardware for use on van type tactical vehicles. Overall characteristics of such hardware, envelope dimensions, structural features, applications and certain data required for interchangeability are included. Items are the type that are commercially available with a broad procurement base and found to be acceptable for military use.

1.2 Limitation. Figures used in this document are intended to reflect manufacturer's standard practice wherever practicable. No reference, real or implied, to any identifiable design features or configurations of individual items should be inferred.

## 2. REFERENCED DOCUMENTS

2.1 The issue of the following documents in effect on the date of invitation for bids form a part of this standard to the extent specified herein.

### SPECIFICATIONS

#### Federal

- |          |  |
|----------|--|
| QQ-A-591 | - Aluminum Alloy Die Castings.                       |
| QQ-A-601 | - Aluminum Alloy Sand Castings.                      |
| QQ-I-666 | - Iron Castings, Malleable.                          |
| QQ-S-630 | - Steel, Bar, Carbon, Hot Rolled (Merchant Quality). |
| QQ-S-681 | - Steel Castings.                                    |
| QQ-S-698 | - Steel, Sheet and Strip, Low-Carbon.                |

### STANDARDS

#### Military

- |             |  |
|-------------|--|
| MIL-STD-193 | - Painting Procedures, Tactical Vehicles (Tracked and Wheeled).                                  |
| MIL-STD-417 | - Rubber Compositions, Vulcanized General Purpose, Solid (Symbols and Tests).                    |
| MS 27183    | - Washer, Flat-Round, Steel, Cadmium Plated, General Purpose.                                    |
| MS 35829    | - Hinge, Continuous (Piano) .075 Thickness, .187 and .250 Pin Dia.                               |
| MS 51922    | - Nut, Self-Locking, Hexagon-Prevailing Torque, General Purpose, 250°F, UNC and UNF.             |
| MS 90726    | - Screw, Cap, Hexagon Head-(Finished Hexagon Bolt), Medium Carbon Steel, Cadmium Plated, UNF-2A. |

(Copies of specifications, standards, drawings, and publications required

MIL-STD-1272A  
6 May 1968

by suppliers in connection with specific procurement functions should be obtained from the procuring activity or as directed by the contracting officer.)

### 3. DEFINITIONS

3.1 Seals. For the purposes of this standard, a seal is a device to prevent the entrance or exit of the elements around door openings. The degree of sealing around a door is determined by the door's use.

3.1.1 Heavy seal. A heavy seal is that which is used generally in van type applications or where van interior pressure or temperature may vary from outside atmospheric pressure or temperature.

3.1.2 Light or medium seal. A light or medium seal is that which is used in cargo or general purpose type applications where slight or little differences between interior or exterior pressures or temperatures may be expected.

3.2 Doors. For the purposes of this standard, the description of the type door (light, medium, heavy) is determined by its intended use.

3.2.1 Heavy door. A heavy door is the type used for refrigerator van type applications where van interior pressure or temperature may vary from outside atmospheric pressure or temperature.

3.2.2 Light or medium door. A light or medium door is the type used for cargo or general purpose type vans where slight or little difference between interior and exterior pressures or temperatures may be expected.

### 4. GENERAL REQUIREMENTS (Not Applicable)

### 5. DETAIL REQUIREMENTS

5.1 Dimensions. All "X" dimensions used in figures 1 through 15 shall be established by individual installation requirements. All "Y" dimensions indicate manufacturer's standard practice.

5.2 Finish. Surface preparation and finish shall conform to MIL-STD-193.

5.3 Vehicular door hardware shall conform to the characteristics and other data described in table I.



MIL-STD-1272A  
6 May 1968

TABLE I. Door hardware, vehicular.

Item	Figure or MS	Material	Remarks
Lock, Door, Van-Cam	Fig. 1	QQ-I-666, Grade II or QQ-S-681, class 2.	For use in left or right-hand door installations. Lock shall have a safety release on the inside and a take-up adjustment in the handle.
Three Point ....			For use where a heavy seal and a heavy door are required.
Two Point .....			For use where light or medium seals, and light or medium doors are required.
Lock, Door, Van- Wedge Bolt.	Fig. 2	QQ-S-698, hot rolled, or cold rolled, temper (d) or (e), 1009 through 1020.	For use on personnel, medical, electronic, and similar type vans where light or medium seals, and light or medium doors are required.
Rod .....		QQ-S-630, C 1010 through C 1020.	
Bolt .....		QQ-I-666, Grade II or QQ-S-681, class 2.	

MIL-STD-1272A  
6 May 1968

TABLE I. Door hardware, vehicular.

Item	Figure or MS	Material	Remarks
Lock, Door, Van-Slam Bolt.	Fig. 3	QQ-S-698, hot rolled, or cold rolled, temper (d) or (e), 1009 through 1020.	For use on the side doors or right hand rear doors on cargo type vans where light or medium seals, and light or medium doors are required.
Rod .....		QQ-S-630, C 1010 through C 1020.	
Bolt .....		QQ-I-666, Grade II or QQ-S-681, class 2.	
Lock, Door, Van-Slam Bolt, Two Piece	Fig. 4	QQ-S-698, hot rolled, or cold rolled, temper (d) or (e), 1009 through 1020	This lock with a bottom and top latch assembly. For use on cargo type vans where light or medium seals, and light or medium doors are required
Rod .....		QQ-S-630, C 1010 through C 1020	
Bolt .....		QQ-I-666, Grade II or QQ-S-681, class 2.	

F

MIL-STD-1272A  
6 May 1968

TABLE I. Door hardware, vehicular.

Item	Figure or MS	Material	Remarks
Handle, Door, Van Outside, Heavy Duty	Fig. 5	QQ-I-666, Grade II or QQ-S-681, class 2.	For use with Lock, Door, Van-Wedge Bolt. For use where light, medium or heavy seals, and light, medium, or heavy doors are required.
Shank .....		QQ-S-630, C 1010 through C 1020.	
Mounting Plate .		QQ-S-698, hot rolled, or cold rolled, temper (d) or (e), 1009 through 1020.	
Handle, Door, Van, Outside, Medium Duty	Fig. 6	QQ-I-666, Grade II or QQ-S-681, class 2.	For use with Lock, Door, Van-Slam Bolt. For use where light or medium seals, and light or medium doors are required.
Shank .....		QQ-S-630, C 1010 through C 1020.	
Mounting Plate .		QQ-S-698, hot rolled, or cold rolled, temper (d) or (e), 1009 through 1020.	

MIL-STD-1272A  
6 May 1968

TABLE I. Door hardware, vehicular.

Item	Figure or MS	Material	Remarks
Handle, Door, Van, Inside 5/8 Inch Shank Hole	Fig. 7	QQ-I-666, Grade II or QQ-S-681, class 2	For use with Lock, Door, Van-Slam Bolt; and Handle, Door, Van, Outside, Heavy Duty.
Handle, Door, Van Inside 5/16 Inch Shank Hole	Fig. 7	QQ-I-666, Grade II or QQ-S-681, class 2	For use with Lock, Door, Van-Slam Bolt; and Handle, Door, Van, Outside, Heavy Duty.
Hinge, Continuous, (Piano), .075 Thickness, .250 Pin Dia.	Fig. 8 MS35829-8D		For use on side doors or small personnel access doors (usually not more than 24 inches square where very light or no seal pressure is re- quired). For use, also, with other light or medium doors where light or medium seal is required.

MIL-STD-1272A  
6 May 1968

TABLE I. Door hardware, vehicular.

Item	Figure or MS	Material	Remarks
Hinge, Door, Van- Flat Mounting	Fig. 9	QQ-A-601, Aluminum alloy sand casting, Almag 35, Temper F, or QQ-A-591, Aluminum alloy die casting.	For mounting on flat surfaces on doors used for personnel type vans where light or medium seals, and light or medium doors are required.
Nut ..... Screw ..... Washer .....	MS51922-37 MS90726-128 MS27183-19		
Hinge, Door, Van Corner Mounting.	Fig. 10	QQ-A-601, Aluminum alloy sand casting, Almag 35, Temper F, or QQ-A-591, Aluminum alloy die casting.	Requires a 2-1/4 inch radius of corner post for mounting on personnel type vans where light or medium seals, and light or medium doors are required.
Nut ..... Screw ..... Washer .....	MS51922-37 MS90726-128 MS27183-19		

MIL-STD-1272A  
6 May 1968

TABLE I. Door hardware, vehicular.

Item	Figure or MS	Material	Remarks
Hinge, Door, Van Medium Duty.	Fig. 11	QQ-S-698, hot rolled, or cold rolled, temper (d) or (e), 1009 through 1020.	For corner mounting or flat mounting with all doors, under all sealing conditions.
Butt .....			
Strap .....		QQ-I-666, Grade II or QQ-S-681, class 2	
Hold-Back, Door, Van	Fig. 12	QQ-S-698, hot rolled, condition (c) finish (c): or cold rolled, con- dition (d) or (e).	For use with rear or side doors of van bodies. Used in pairs: one mounted on door (inside or outside), the other on body, with connecting chain to hold door in open position.  Close straight link machine type; .162 diameter wire; tensile strength, 1140 pounds; weight, 23 pounds per 100 feet.
Chain .....			

MIL-STD-1272A  
6 May 1968

TABLE I. Door hardware, vehicular.

Item	Figure or MS	Material	Remarks
Hold-Back, Door, Van (Alternate Design)	Fig. 13		For use with rear or side doors of van bodies.
Hold-Back, Door, Van (Alternate Design)	Fig. 14		For use with rear or side doors of van bodies.
Bumper, Rubber, Van  Stud .....	Fig. 15	MIL-STD-417, Type R, Class RS615BC1DF <sub>2</sub> K <sub>1</sub>  QQ-S-630, C1010 through C1020.	For use as a door stop on all side and rear doors on all types of vans.

MIL-STD-1272A  
6 May 1968

(Copies of specifications, standards, drawings, and publications required by suppliers in connection with specific procurement functions should be obtained from the procuring agency or as directed by the contracting officer.)

(Copies of this standard for military use may be obtained as indicated in the foreword to the Department of Defense Index of Military Specifications and Standards.)

(The title and identifying symbol should be stipulated when requesting copies of military standards.)

Custodians:

Army - AT  
Air Force - 84

Preparing activity:

Army - AT

Project No. 2540-0150

User activity:

Navy - MC



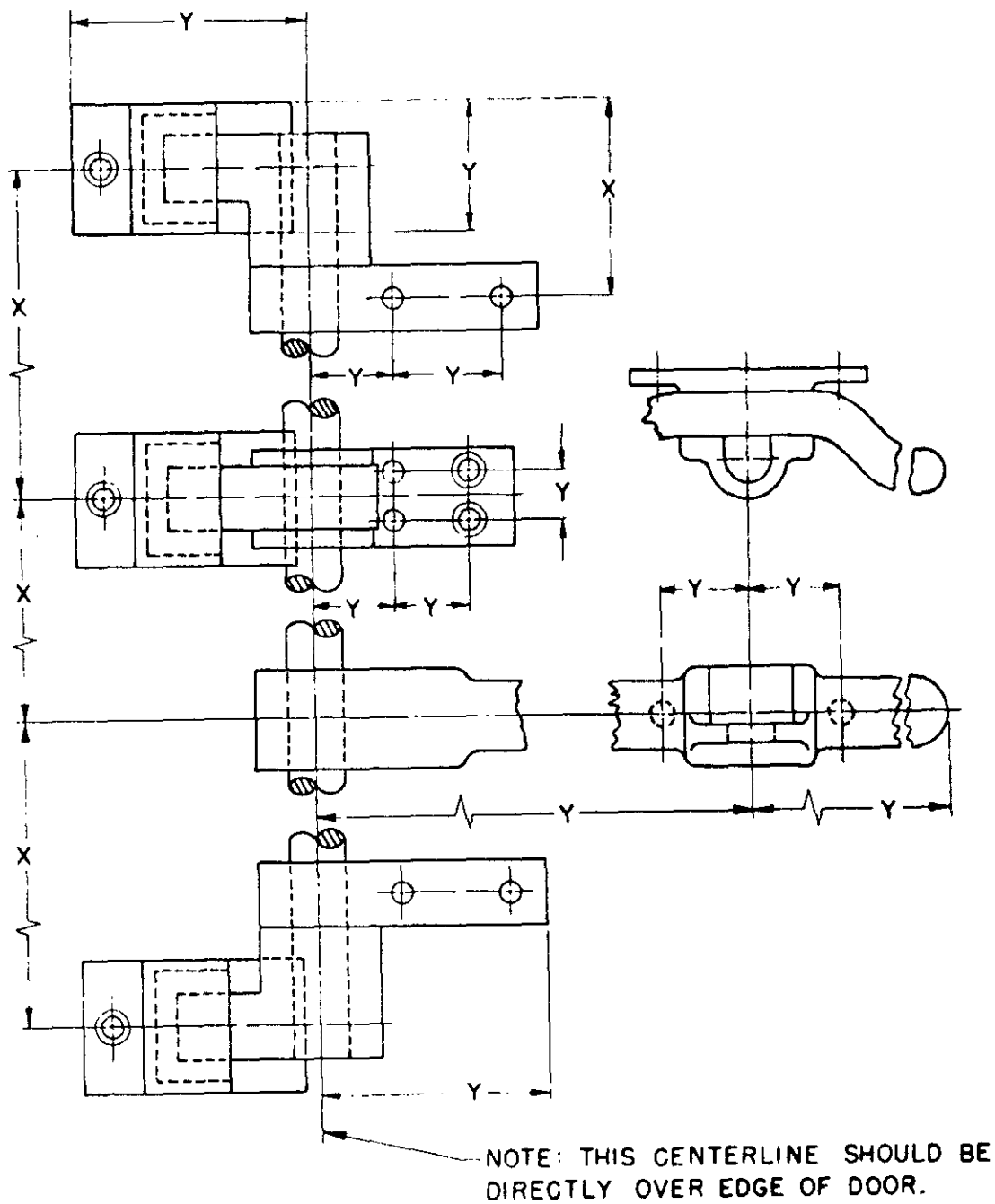
MIL-STD-1272A  
6 MAY 1968

FIGURE 1. LOCK, DOOR, VAN—CAM.

MIL-STD-1272A  
6 MAY 1968

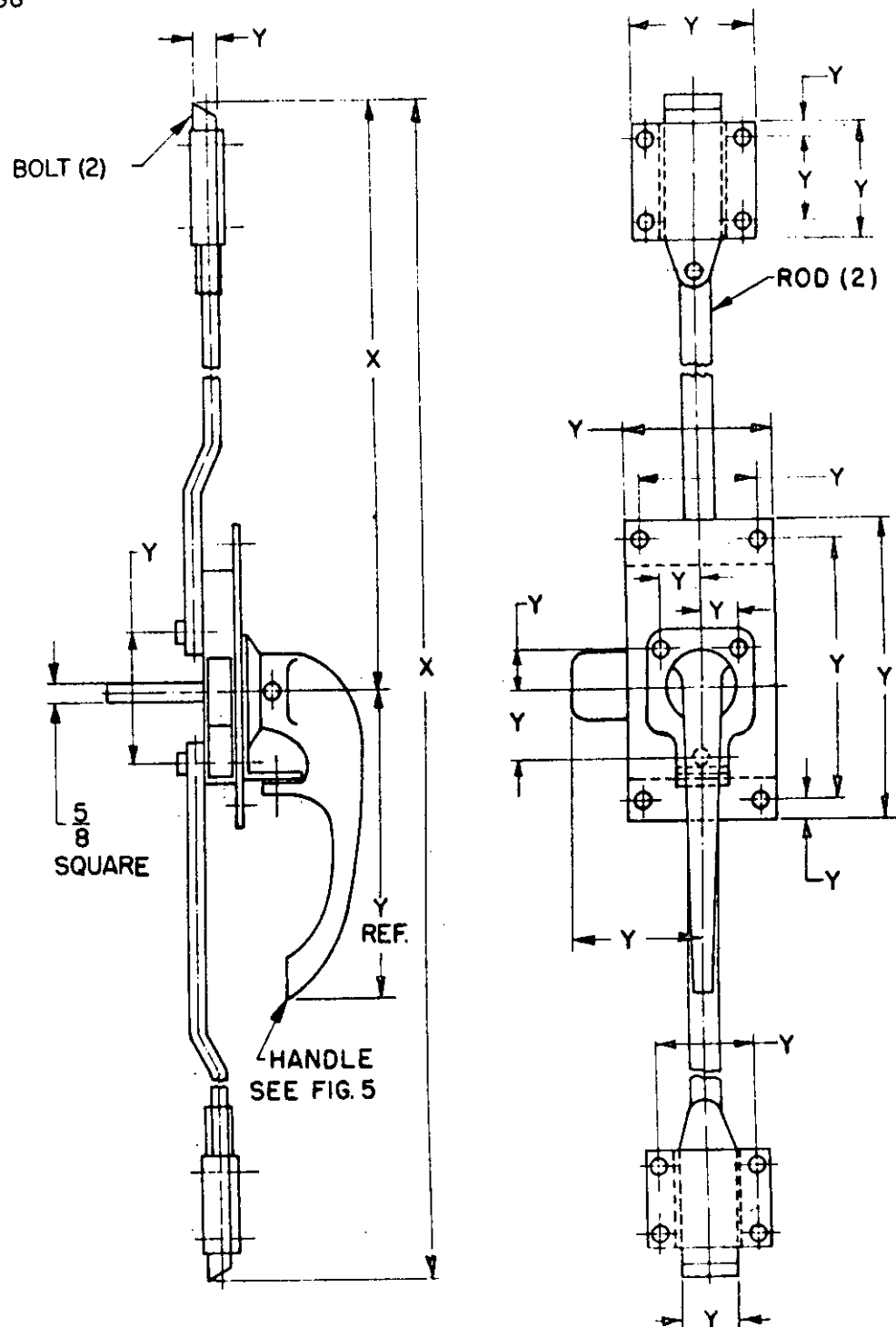


FIGURE 2. LOCK, DOOR, VAN — WEDGE BOLT.

MIL-STD-1272A  
6 MAY 1968

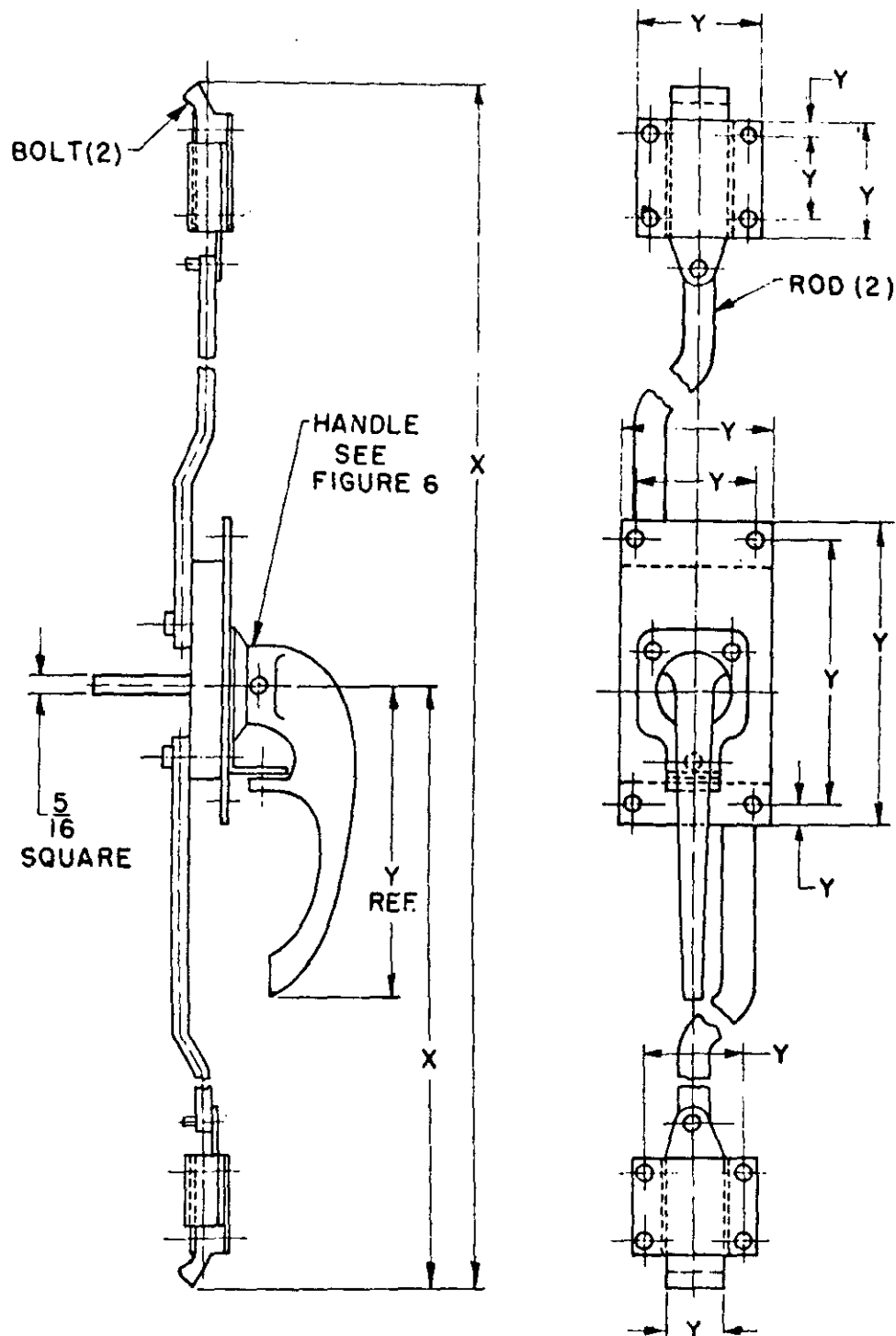


FIGURE 3. LOCK, DOOR, VAN — SLAM BOLT.

MIL-STD-1272A  
6 MAY 1968

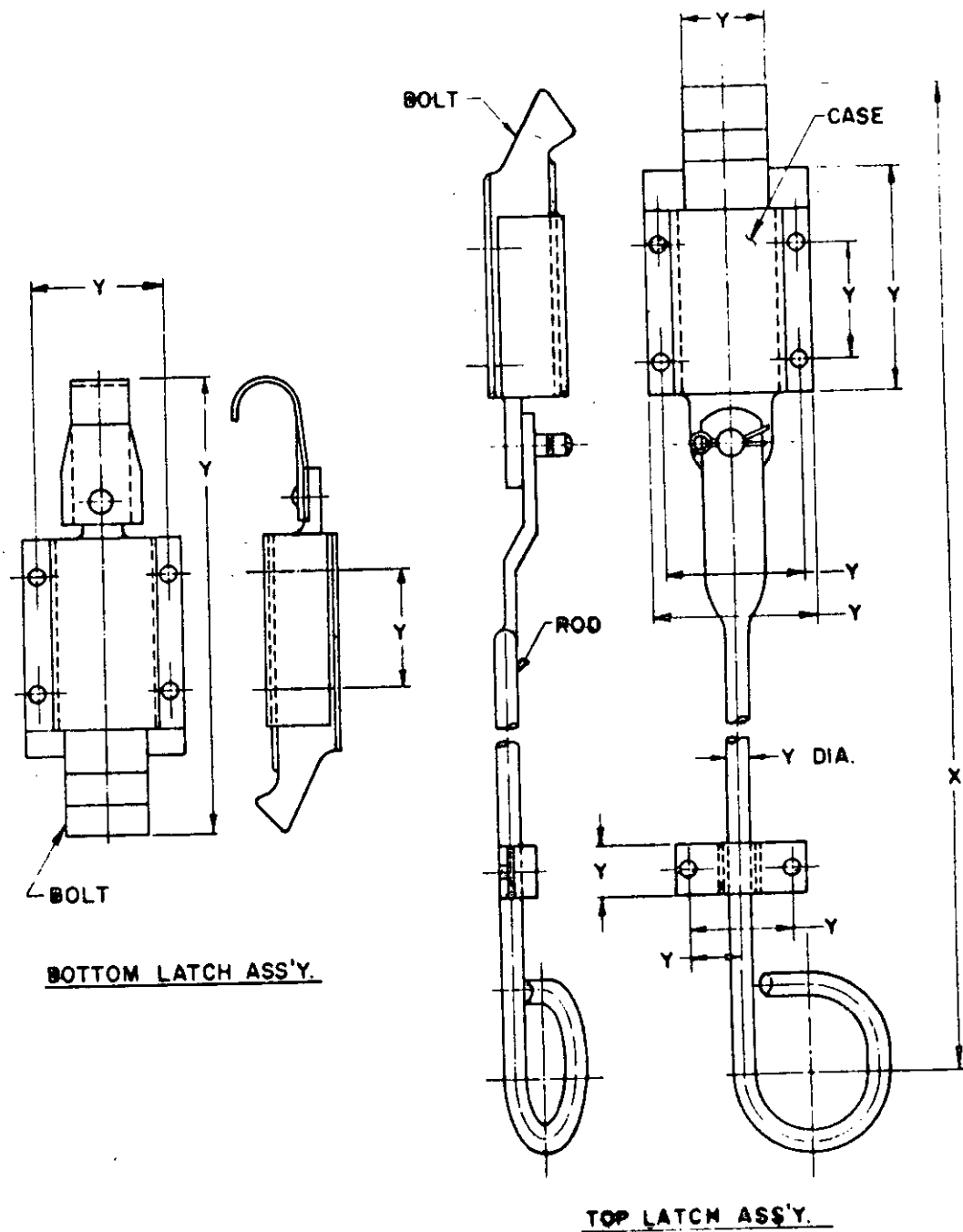


FIGURE 4. LOCK, DOOR, VAN — SLAM BOLT, TWO PIECES.

MIL-STD-1272A  
6 MAY 1968

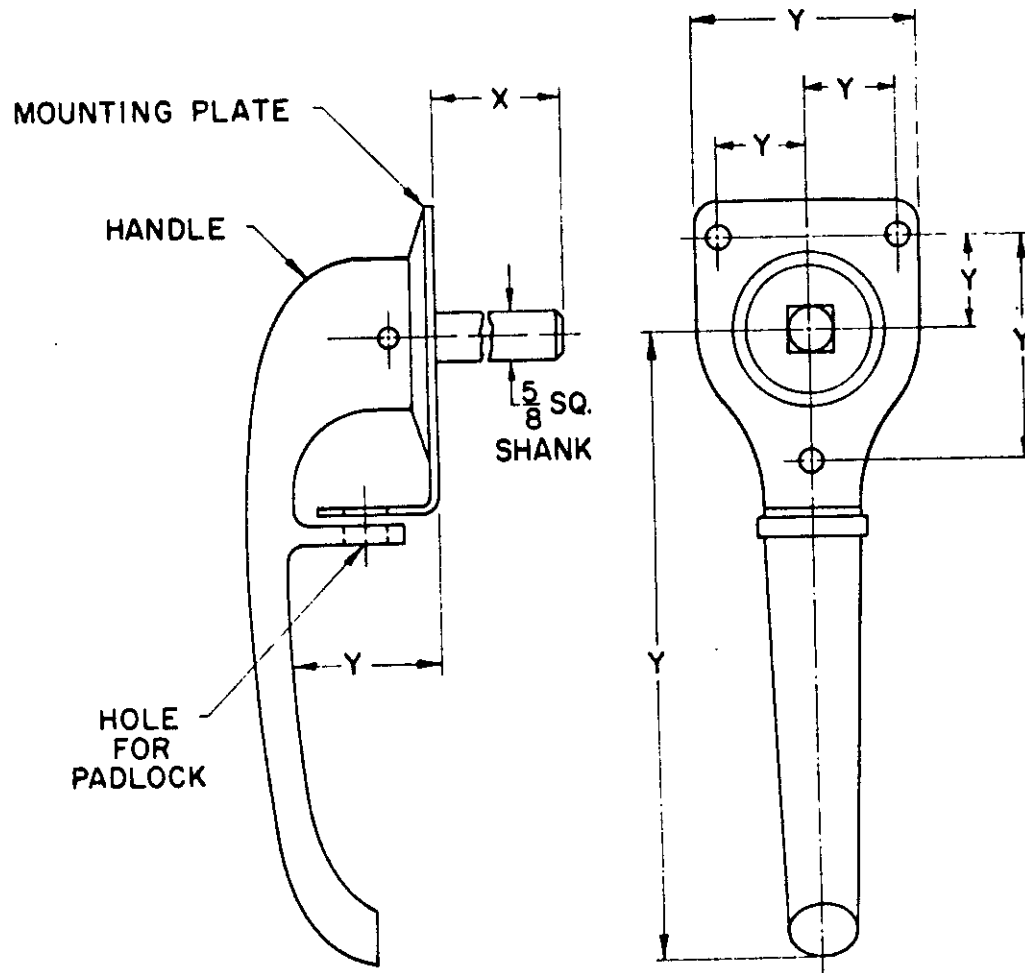


FIGURE 5. HANDLE, DOOR, VAN, OUTSIDE, HEAVY DUTY.

MIL-STD-1272A  
6 MAY 1968

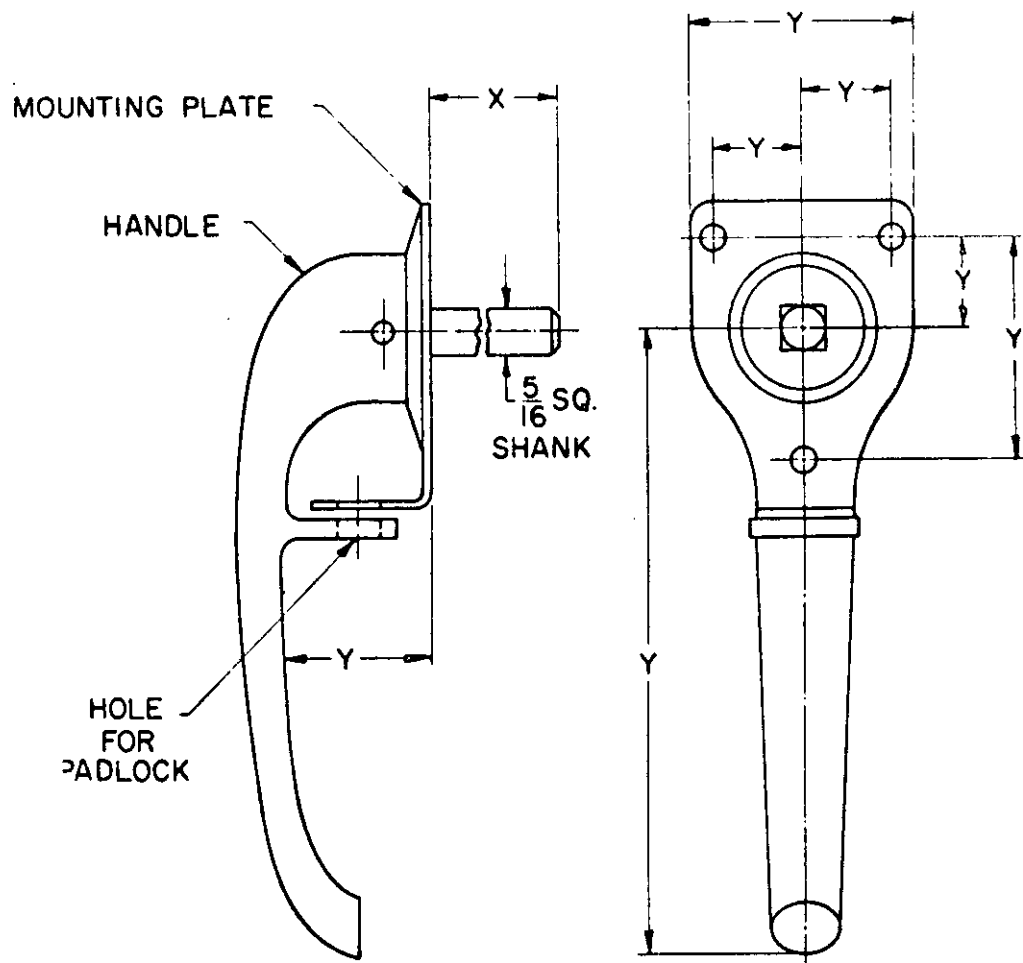


FIGURE 6. HANDLE, DOOR, VAN, OUTSIDE, MEDIUM DUTY.

MIL-STD-1272A  
6 MAY 1968

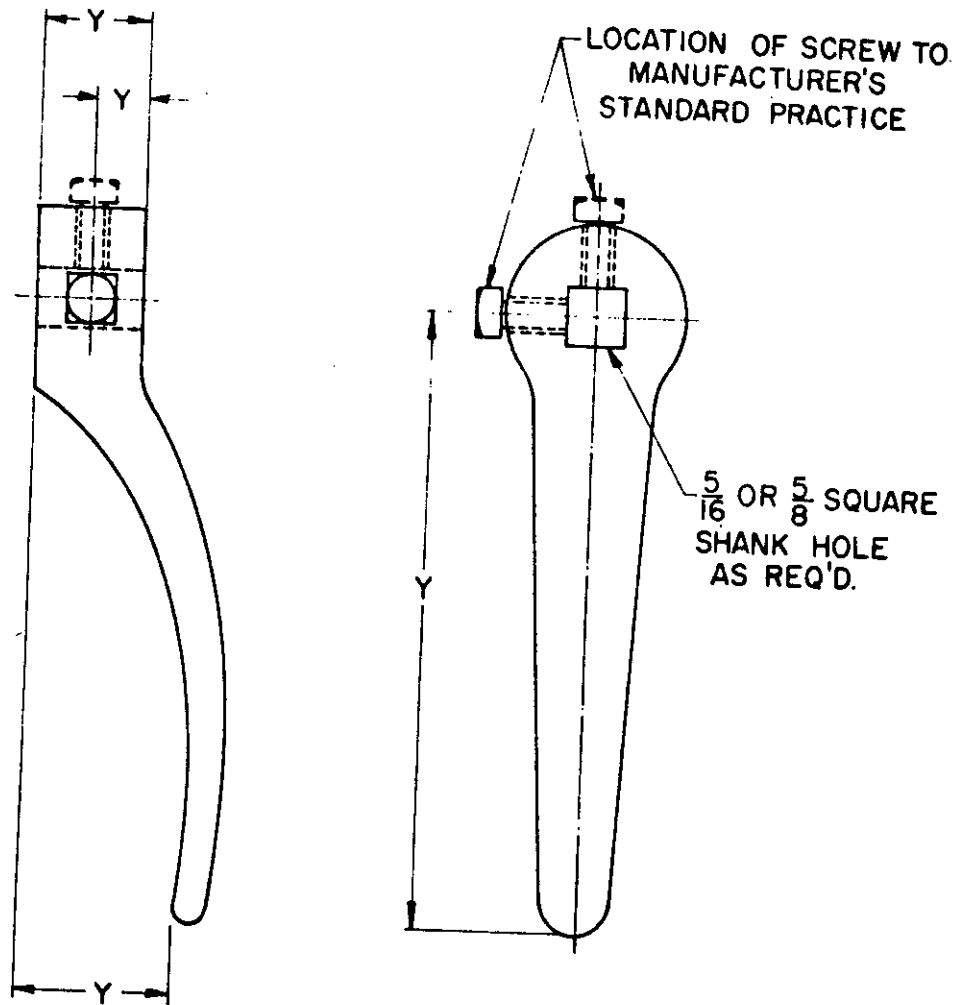


FIGURE 7. HANDLE, DOOR, VAN, INSIDE.

MIL-STD-1272A  
6 MAY 1968

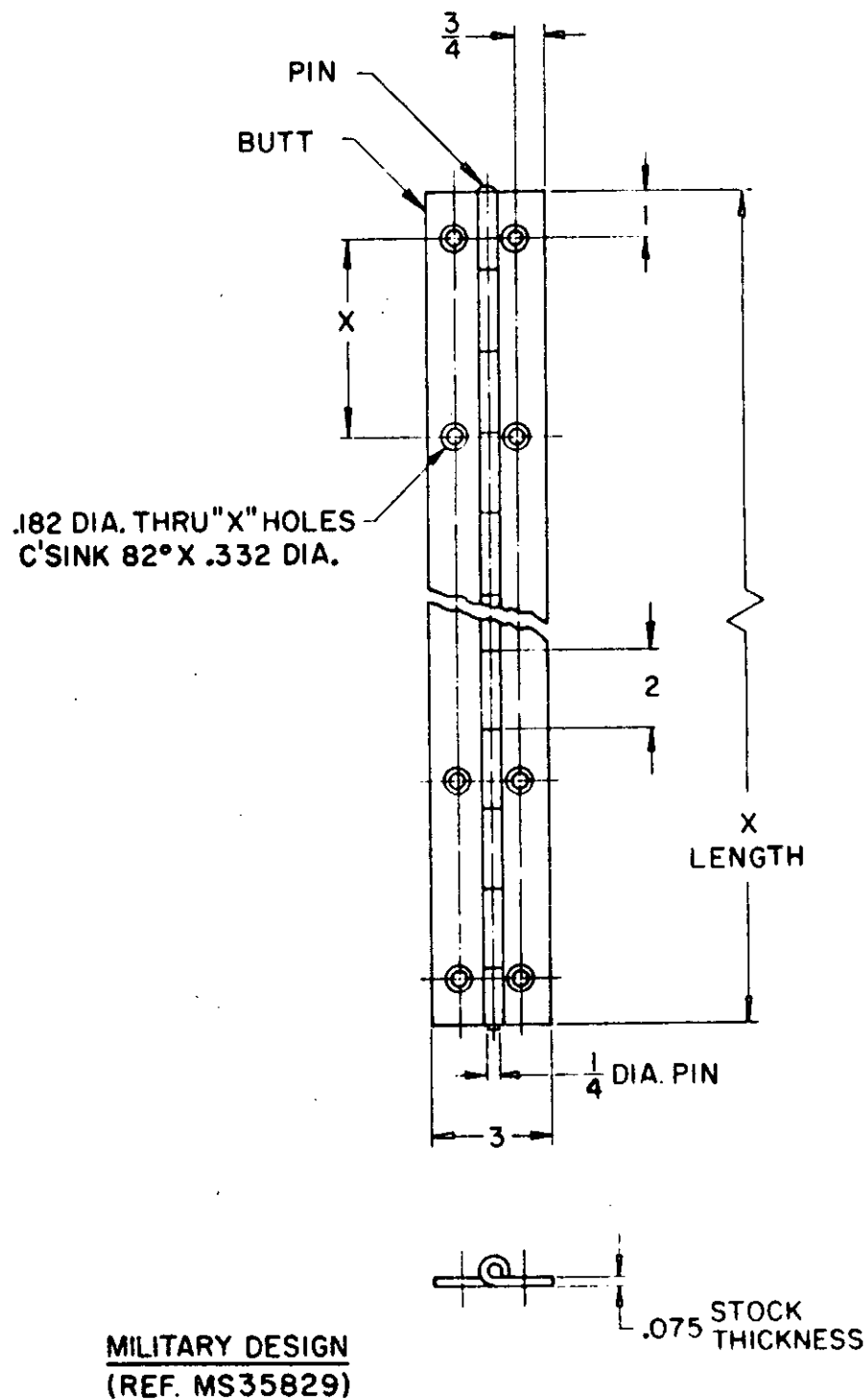


FIGURE 8. HINGE, CONTINUOUS (PIANO) .075 THICKNESS, .250 PIN DIA.



MIL-STD-1272A  
6 MAY 1968

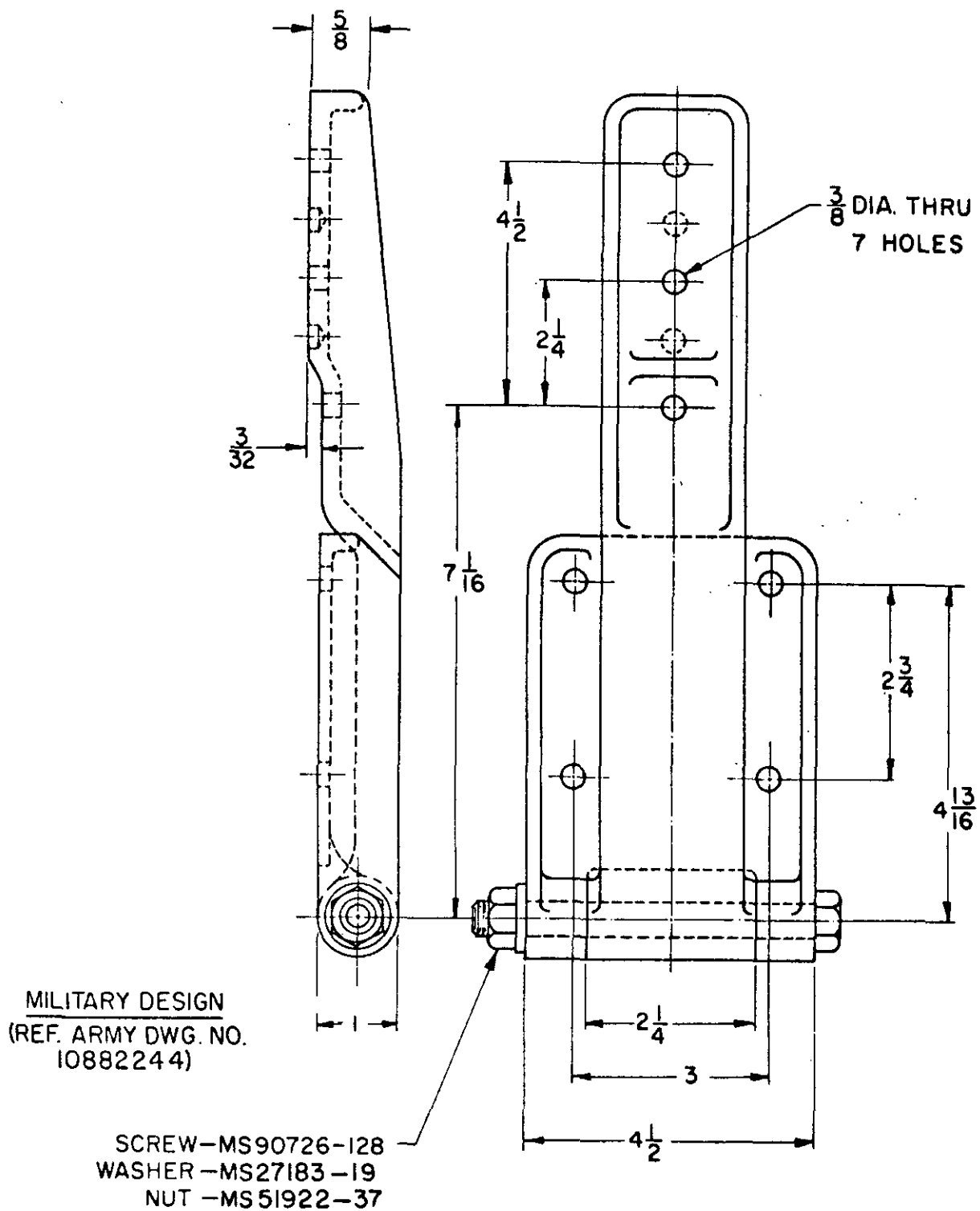


FIGURE 9. HINGE, DOOR, VAN — FLAT MOUNTING.

MIL-STD-1272A  
6 MAY 1968

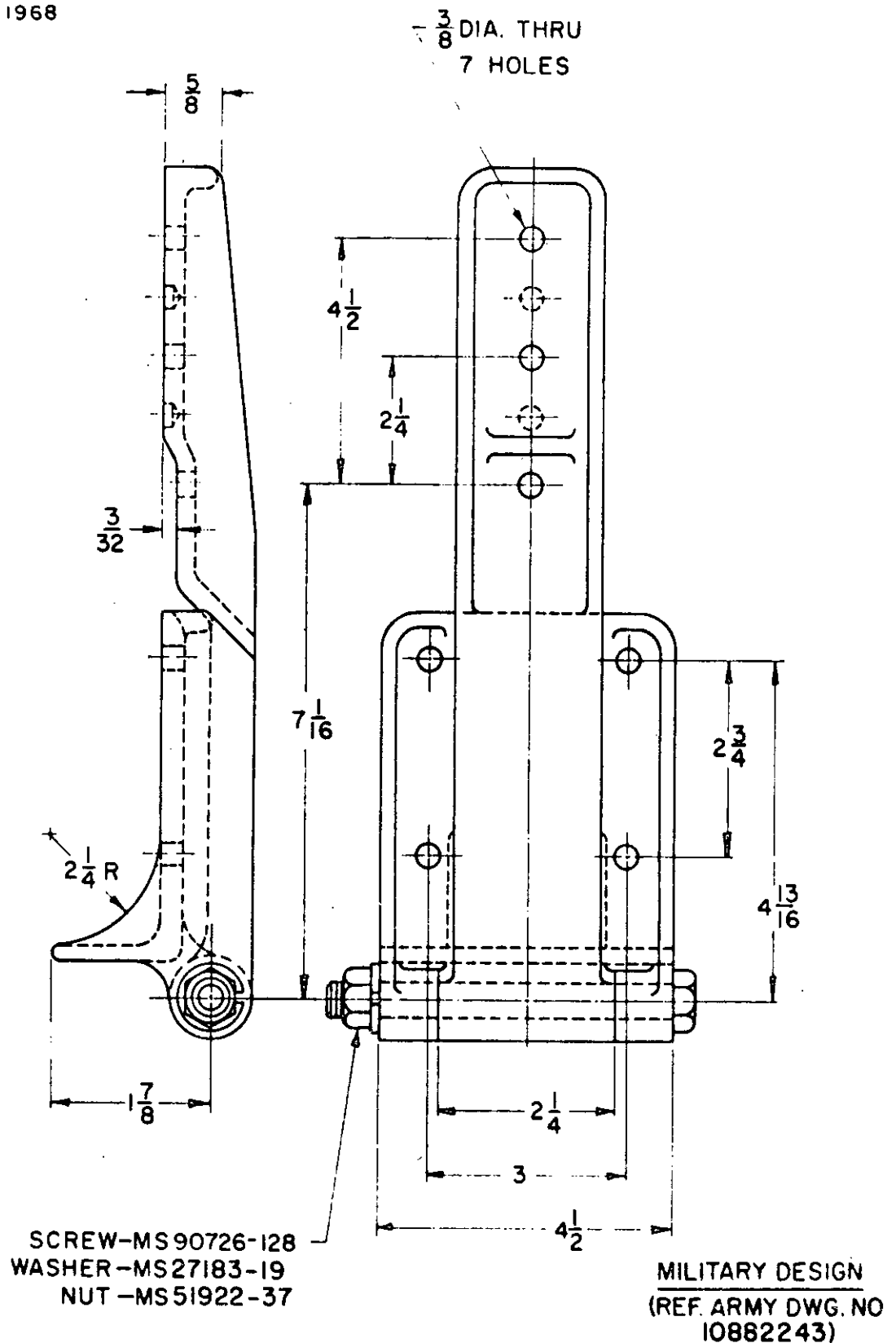
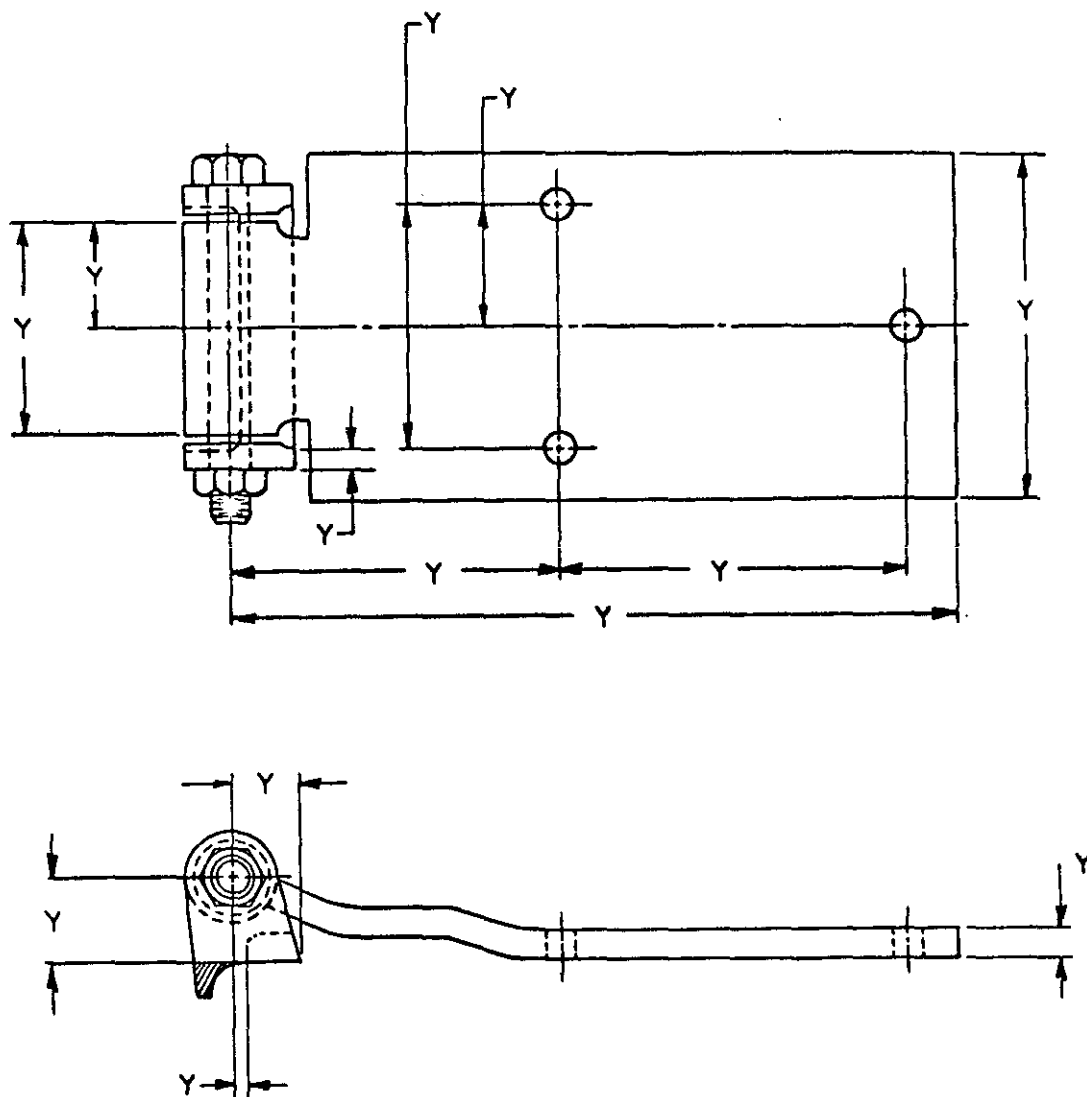


FIGURE 10. HINGE, DOOR, VAN - CORNER MOUNTING.

MIL-STD-1272A  
6 MAY 1968



NOTE: BUTT IS WELDED TO CORNER POST.  
FOR FLAT MOUNTING PURPOSES,  
SHADED AREA IS GROUND OFF.

FIGURE 11. HINGE, DOOR, VAN - MEDIUM DUTY.

MIL-STD-1272A  
6 MAY 1968

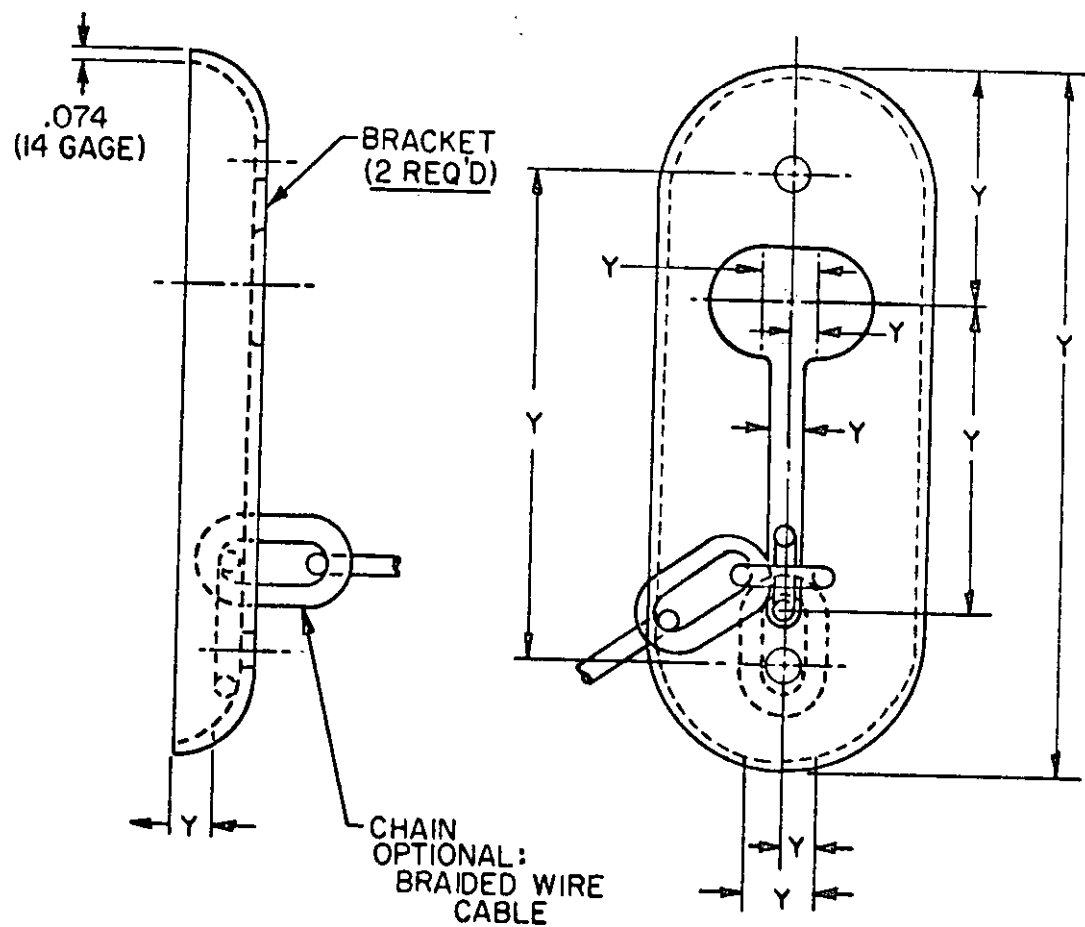
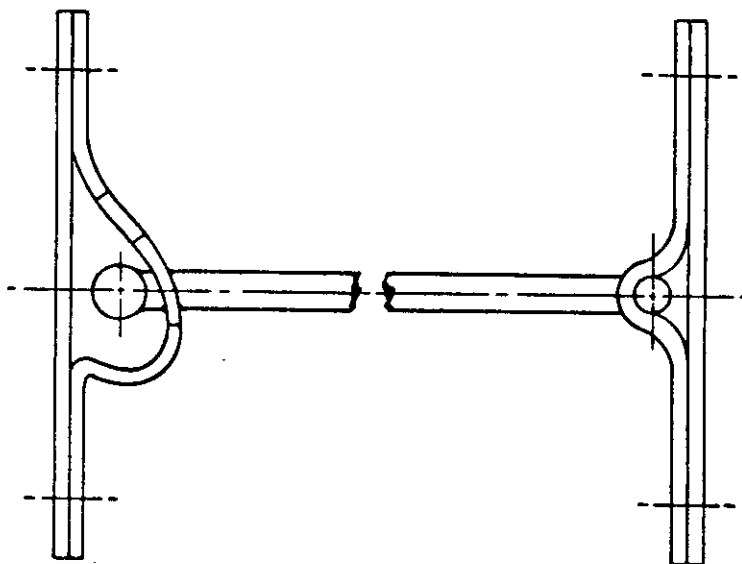
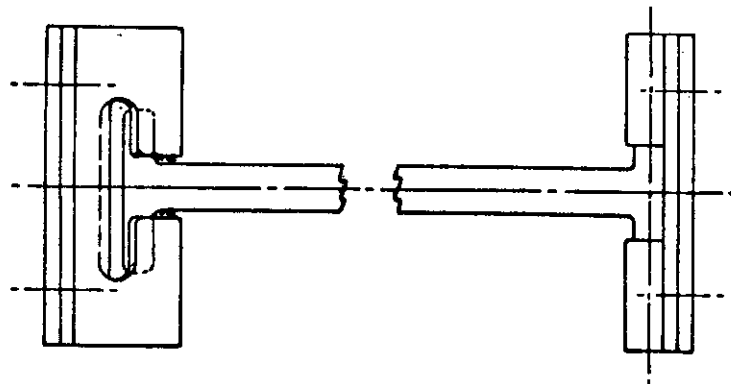


FIGURE 12. HOLD-BACK, DOOR, VAN.

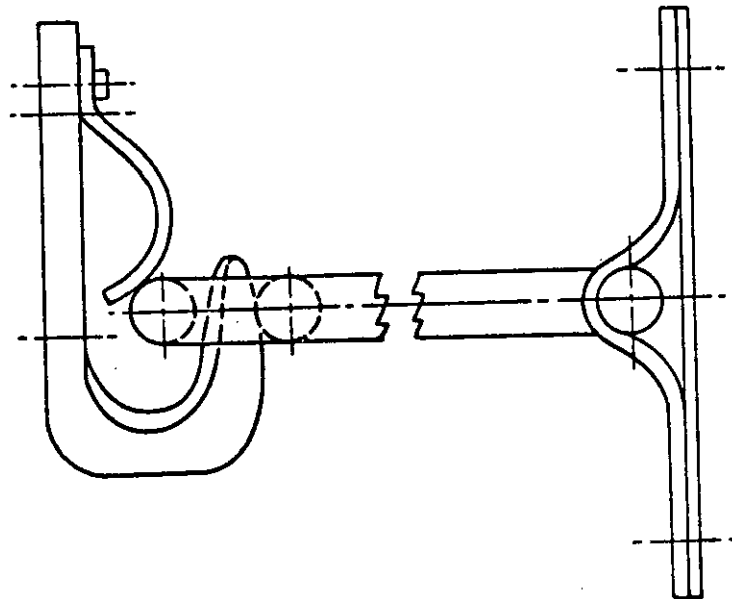
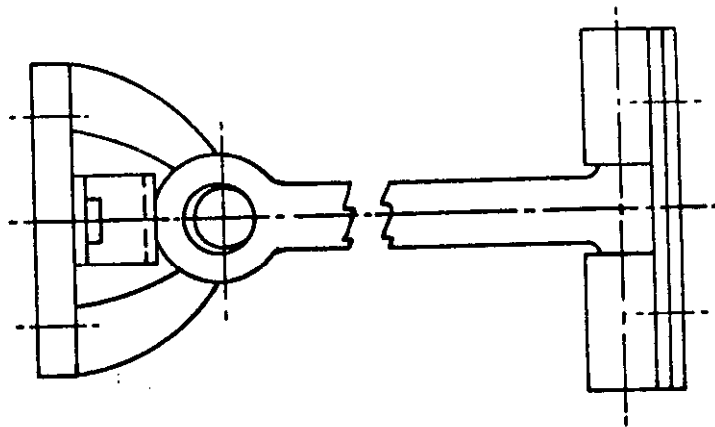
MIL-STD-1272A  
6 MAY 1968



NOTE: ALL DIMENSIONS TO MANUFACTURE'S STANDARD

FIGURE 13. HOLD-BACK, DOOR, VAN (ALTERNATE DESIGN)

MIL-STD-1272A  
6 MAY 1968



REF. ARMY DRAWING 8747118

FIGURE 14. HOLD-BACK, DOOR, VAN (ALTERNATE DESIGN)

MIL-STD-127.2 A  
6 MAY 1968

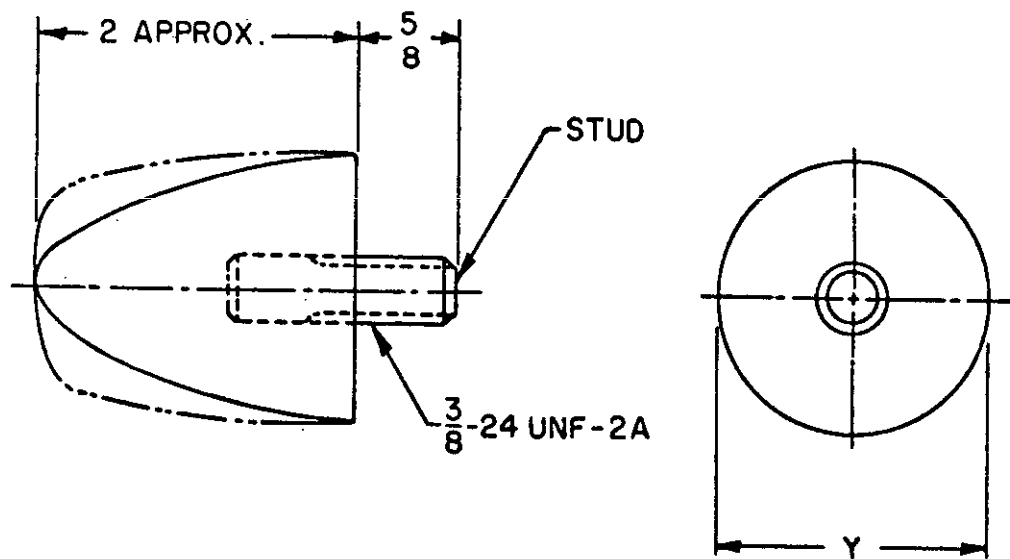


FIGURE 15. BUMPER, RUBBER, VAN

