

MIL-STD-482A
1 APRIL 1974

SUPERSEDING
MIL-STD-482
19 SEPTEMBER 1968

MILITARY STANDARD

CONFIGURATION STATUS ACCOUNTING DATA
ELEMENTS AND RELATED FEATURES



MISC

MIL-STD-482A
1 April 1974

DEPARTMENT OF DEFENSE

Washington, D. C. 20301

Configuration Status Accounting Data Elements and Related Features MIL-STD-482A.

1. This military standard is approved for use by all departments and agencies of the Department of Defense.
2. Recommended corrections, additions, or deletions should be addressed to Commander, Naval Ordnance Systems Command, Attn: ORD-05211, Department of the Navy, Washington, D. C. 20360.

MIL-STD-482A
1 April 1974

FOREWORD

Configuration status accounting records provide the Department of Defense (DoD) and Defense Industry management with the information needed to identify the initial configuration item and determine the status of change-proposal and change-implementation actions.

To assure the use of uniform, clearly defined status-accounting management information throughout DoD and DoD-Defense Industry interface, this standard prescribes status-accounting standard data elements, interim (nonstandard) data elements, and their related data items, codes, use identifiers, and data chains (referred to as "related features"). The data elements and related features are to be used as the content of those configuration status-accounting records prepared by or for the department or agencies of DoD in accordance with the provisions of DoD Directive 5010.19 and DoD Instruction 5010.21. All data elements and related features used herein that are identified as interim (nonstandard) are subject to change when standardized under the discipline of the DoD Standard Data Element and Data Code Program.

To permit status-accounting records to be responsive to the needs of managing organizations, this standard does not prescribe which of the data elements and related features shall be used in a given situation. Furthermore, this standard does not prescribe the format or frequency of the records. Such requirements will be specified on a case-by-case basis by the managing organization.

The data elements established by this standard are to satisfy the requirement for all configuration status-accounting records. In the event government agencies or contractors consider it necessary to prescribe additional data elements, data items, codes, use identifiers, and chains, the supplemental data elements must be submitted to the custodian of this standard for tentative approval prior to their use.

The format and content of specific records, reports, and listings have not been prescribed in this standard in order that format and content may be negotiated between the procuring or managing activity and the reporting activity. For fixed-price-type contracts, the request for proposal should specify the record content and stipulate that contractors' standard formats that convey the desired (and possibly additional) information using the standard data elements defined hereinafter will be accepted by the procuring agency in fulfilling such requirements.

MIL-STD-482A
1 April 1974

CONTENTS

<u>Paragraph</u>	<u>Page</u>
1. Scope	1
2. Referenced Documents	1
3. Definitions	2
4. General Requirements	3
5. Detailed Requirements	3
6. Notes	4
Appendix I	I-1
Appendix II	II-1
Appendix III	III-1

MIL-STD-482A
1 April 1974

1. SCOPE

1.1 This standard establishes the data elements, and their related data items, codes, use identifiers, and data chains (referred to as "related features") to be used as the content of configuration status accounting records. This standard does not prescribe which of the data elements and related features to use, the status-accounting-record format to be used, or the frequency of status-accounting-record reports. Such requirements are specified elsewhere by the procuring activity.

1.2 If data elements, supplemental to those in this standard, are required by the government or a contractor for configuration management, it will be necessary to submit these data elements and related features to the custodian of this standard for tentative approval prior to use.

2. REFERENCED DOCUMENTS

2.1 The issues of the following documents in effect on the date of invitation for bids form a part of this standard to the extent specified herein.

Standards

Military

MIL-STD-100	Engineering Drawing Practices
MIL-STD-143	Standards and Specifications, Order of Precedence for the Selection of
MIL-STD-155	Joint Photographic Type Designation Systems
MIL-STD-196	Joint Electronics Type Designation System
MIL-STD-275	Printed Wiring for Electronic Equipment
MIL-STD-280	Definition of Item Levels, Item Exchangeability, Models, and Related Terms

MIL-STD-480

MIL-STD-481

MIL-STD-490

MIL-STD-721

MIL-STD-804

MIL-STD-815

MIL-STD-875

MIL-STD-881

Federal

H2-1

H4-1

H6-1

M1-3

Configuration Control — Engineering Changes, Deviations and Waivers
Configuration Control — Engineering Changes, Deviations and Waivers (Short Form)
Specification Practices
Definitions of Effectiveness
Terms for Reliability, Maintainability, Human Factors and Safety
Formats and Coding of Aperture, Copy and Tabulating Cards for Engineering Data
Micro-Reproduction System
Type Designation System for Rocket Engines, Motors and Hybrids
Type Designation System for Aeronautical and Aeronautical Support Equipment
Work Breakdown Structures for Defense Materiel Items

Cataloging Handbook, Federal Supply Classification, Groups and Classes
Cataloging Handbook, Federal Supply Code for Manufacturers — Name to Code
Cataloging Handbook, Alphabetical Index of Names (FIIG's)
Federal Manual for Supply Cataloging, Supply Classification

MIL-STD-482A

1 April 1974

M1-6	Federal Manual for Supply Cataloging, Operating Forms	ASPR	Armed Services Procurement Regulations
Specifications		Army	
Military		Regulation AR-310-1	Military Publication
MIL-D-1000	Drawings, Engineering and Associated Lists	Regulation AR-750-10	Material Readiness
MIL-M-38784	Technical Manuals, General Requirements for Preparation of	Navy	
MIL-T-38804	Time Compliance Technical Orders (TCTO's) Preparation of	OR-1	Naval Ordnance Requirements, Mk and Mod Nomenclature System
MIL-S-83490	Specifications, Types and Forms	NAVORD Instruction 8800.2A	Designating and Naming Rockets and Guided Missiles, Procedures for
Bulletins			
Air Force-Navy Aeronautical			
ANA Bulletin 306	Engines, Aircraft Turbine and Jet, Designation of		
ANA Bulletin 395	Engines, Aircraft Reciprocating, Designation of		
Publications			
Department of Defense			
DoD 5000.12M	Manual for Standard Data Elements		
Joint Military			
AFR 66-11, AR 700-26 NAVAIR Instruction 13100.3	Designating and Naming Military Aircraft		
AFR 82-5 AR 70-50 NAVMAT Instruction 8800.4	Designating and Naming Defense Equipment Rockets and Guided Missiles		

(Copies of specifications, standards, drawings, and publications required by contractors in connection with specific procurement functions should be obtained from the procuring activity or as directed by the contracting officer.)

3. DEFINITIONS

3.1 Configuration management: A discipline applying technical and administrative direction and surveillance to: (1) identify and document functional and physical characteristics of a configuration item; (2) control changes to those characteristics; and (3) record and report change processing and implementation status.

3.2 Configuration identification: The current approved or conditionally approved technical documentation for a configuration item as set forth in specifications, drawings and associated lists, and documents referenced therein.

3.3 Configuration control: The systematic evaluation, coordination, approval or disapproval, and implementation of all approved changes in the configuration of a configuration item after formal establishment of its configuration identification.

MIL-STD-482A

1 April 1974

3.4 Configuration status accounting: The recording and reporting of the information that is needed to manage configuration effectively, including a listing of the approved configuration identification, the status of proposed changes to configuration, and the implementation status of approved changes.

3.5 Configuration item (CI): An aggregation of hardware/software, or any of its discrete portions, which satisfies an end-use function and is designated by the Government for configuration management. CI's may vary widely in complexity, size and type, from an aircraft, electronic or ship system to a test meter or round of ammunition. During development and initial production, CI's are only those specification items that are referenced directly in a contract (or an equivalent in-house agreement). During the operation and maintenance period, any reparable item designated for separate procurement is a configuration item.

3.6 Data element: A grouping of informational units that has a unique meaning and subcategories (data items) of distinct units or values.

3.7 Data chain: A grouping of two or more data elements.

3.8 Data use identifier: The name given to the use of a data element in a data system.

3.9 Data item: A subunit of descriptive information or values classified under a data element.

3.10 Data code: A letter, number, character, symbol or any combination thereof used to represent a data item.

4. GENERAL REQUIREMENTS

4.1 Required status-accounting information shall be expressed in terms of standard data elements and related features. Substitutes, alternatives, or variations are not permitted; however, additional data elements, data chains, and related features may be added as required, subject to the conditions contained in paragraphs 1.2 and 1.3 of this standard.

4.2 The procuring activity or managing organization will determine which specific status-accounting information is required, including the format and frequency of the status-accounting reports.

4.2.1 The procuring activity shall specify the desired configuration status-accounting information, including data elements, data chains, and their related features, the format(s), and frequency of reports.

4.2.2 The procuring activity may specify that report content and format are negotiable and solicit alternative proposals. When alternative proposals are solicited, the procuring activity shall instruct the offerors to propose a cost-effective system that fulfills the specific program requirements.

4.2.3 The configuration status-accounting requirement that results from the actions of 4.2.1 and 4.2.2 shall be specifically stated in the contract or order and must be listed on the DD Form 1423. Any other configuration data ordered under contract must be specified on DD Form 1423. Therefore, any configuration status accounting listing or product that is deliverable to the Government must be as specified on the DD Form 1423, with appropriate references to standard specifications or other data source.

5. DETAILED REQUIREMENTS

5.1 Standard data elements and related features: The standard data elements and related features are listed in Appendix I and Appendix II.

5.2 Illustrative examples: The examples of status accounting records in Appendix III are intended solely to show how the standard data elements and related features can be used to express status-accounting information, either manually or machine prepared. No other significance should be given them.

5.3 Configuration status accounting: Configuration status-accounting information necessary to manage configuration effectively and economically shall be recorded and reported. This shall include a listing

MIL-STD-482A
1 April 1974

of the approved configuration identification, the status of proposed changes to that configuration, and the implementation status of approved changes. Automation of status accounting shall be employed only when the volume of data or rapid response time makes it necessary and is economically feasible.

6. NOTES

6.1 Notice. Copies of specifications, standards, drawings, and publications required by contractors in

connection with specific procurement functions should be obtained from the procuring agency or as directed by the contracting officer.

6.2 Copies of this standard for military use may be obtained as indicated in the foreword to, or the general provisions of, the index of military specifications and standards.

6.3 Title and identifying symbol should be stipulated when requesting copies of military standards.

Custodian:

Army – MU
Navy – OS
Air Force – 10

Review Activities:

Army – MU, MD, MI, EL
Navy – AS, ES, OS, SH, YD
Marine Corps – MC
DSA – DH
NSA, DIA

Preparing Activity:

Navy – OS

Project No. MISC-0979

MIL-STD-482A
1 April 1974

NOTE TO APPENDIXES

Appendix I is an index of configuration status accounting data elements and data use identifiers arranged in alphabetical sequence and also configuration management numbers in numerical sequence. The assigned reference numbers, as shown in the DoD Manual for Standard Data Elements (DoD 5000.12M), are included for cross reference purposes. Appendix II is a compilation of the data elements, data use identifiers, and related features in the format of the current arrangement used for publication of individual standard data elements. Reference numbers and the latest change dates, as shown in DoD 5000.12M on publication of this standard, are used for approved data elements only. Appendix III contains a number of figures that illustrate application of data elements to preparation of status accounting records of the type commonly employed for management and project administration.

The samples provided are not exhaustive in nature since they do not contain all data elements, data chains, or data use identifiers. The content, format, and degree of detail for a particular application will be determined in each case by the user.

The numbers in the circles shown on the status-accounting samples in Appendix III are those shown with the individual data elements of Appendix II. These numbers are used for reference purposes in the coordination and standardization process for this standard and have no other significance.

The same figures have a number of callouts, circle and number, which illustrate data chains and the data elements with which the chains are formed. Two such illustrations of data element, data chain, construction are "Federal Stock Number" and "Date."

Interim data elements contained in this standard that are under the cognizance of an assigned responsible agency (ARA) other than Navy have a content and format as developed for configuration management. The final form and content of interim data elements and features will be determined through further coordination and standardization actions of the listed assigned responsible agency. The application and utilization of these interim data elements and features are mandatory for configuration status accounting systems and optional for other data systems.

Some data elements and features indicate that data codes are literal record entries. For records that represent quantities (such as items, cost, and time) the entry shall be right justified. For records that represent such things as documents, nomenclature, and serial numbers, the entries shall be left justified.

The field length for assignment of drawing number, part number, and document number is limited to 15 spaces. It is recognized that part numbers, drawing numbers, and other document numbers in the past have been assigned under procedures which permitted a number of characters greater than 15. A system convention such as described in Federal Cataloging Manual M 1-6 may be used for data systems that require entry of records of field length greater than 15 characters.

MIL-STD-482A
1 April 1974

APPENDIX 1. *Index of configuration status accounting data elements and data use identifiers*

<u>TITLE</u>	<u>TYPE</u>	DOD 5000.12M <u>REF NO.</u>	<u>CM</u>	<u>PAGE NO.</u>
Action Priority	Element	AC-TJ	21	II-38
Action Sequence	DUI-Element	CH-SA-AB	3	II-2
Admendment Numbers for Solicitation Document	DUI-Element		58	II-86
Air Force Time Compliance Technical Order Number	DUI-Chain	MO-BR-AE	55	II-81
Air Alteration Number (Navy)	DUI-Chain	MO-BR-AD	55	II-81
Call/Order Modification Serial Number	Element	CA-FB	2	II-1
Call/Order Numbers Under Contract	DUI-Element		58	II-86
Chronological Sequence	Element	CH-SA	3	II-2
Component/Function Index	DUI-Element		64	II-93
Computer Program Identification	DUI-Element	CO-LE-AB	4	II-3
Configuration Audit Actual Date -- Functional	DUI-Chain	DA-FA-AE	10	II-7
Configuration Audit Actual Date -- Physical	DUI-Chain	DA-FA-AD	10	II-7
Configuration Audit Schedule Date -- Functional	DUI-Chain	DA-FA-AC	10	II-7
Configuration Audit Schedule Date -- Physical	DUI-Chain	DA-FA-AB	10	II-7
Configuration Identification	Chain	CO-LC	62	II-91
Configuration Item Identification	Element	CO-LE	4	II-3
Configuration Item Variant	Element	CO-LI	5	II-4
Configuration Resource Affected	Element	CO-LK	45	II-62
Contract Basic Line Item Serial Number	Element	CO-OG	6	II-5
Contract Modification Serial Number	Element	CO-QS	8	II-6
Contract Number	DUI-Element		40	II-55
Countries of the World	Element	CO-XV	54	II-73
Date	Chain	DA-FA	10	II-7
Date of Document	DUI-Chain	DA-FA-AF	10	II-7
Day	Element	DA-NA	11	II-8
Day of Year	Element	DA-OB	57	II-85
Design Proofing Requirement	DUI-Element	PR-SB-AB	43	II-60

MIL-STD-482A

1 April 1974

APPENDIX I. Index of configuration status accounting data elements and data use identifiers (cont'd)

<u>TITLE</u>	<u>TYPE</u> Element	DOD 5000.12M <u>REF NO.</u>	<u>CM</u>	<u>PAGE NO.</u>
		DI-VI	12	II-9
Disposition Action				
Disposition Action, Appeals Court, Uniform Code of Military Justice	DUI-Chain	DI-VI-AI	12	II-9
Disposition Action, Commanding Officer, Uniform Code of Military Justice	DUI-Chain	DI-VI-AD	12	II-9
Disposition Action, Convening Authority, Uniform Code of Military Justice	DUI-Chain	DI-VI-AE	12	II-9
Disposition Action, Executive, Uniform Code of Military Justice	DUI-Chain	DI-VI-AJ	12	II-9
Disposition Action, Individual's Request, Debt	DUI-Chain	DI-VI-AB	12	II-9
Disposition Action, Review Court, Uniform Code of Military Justice	DUI-Chain	DI-VI-AH	12	II-9
Disposition Action, Secretary, Uniform Code of Military Justice	DUI-Chain	DI-VI-AG	12	II-9
Disposition Action, Service Decision, Debt	DUI-Chain	DI-VI-AC	12	II-9
Disposition Action, Supervisory Authority, Uniform Code of Military Justice	DUI-Chain	DI-VI-AF	12	II-9
Document Change Level Serial Number	Element	DO-BG	14	II-12
Document Change, Type of	Element	DO-BI	13	II-11
Document Identification	Chain		15	II-13
Document Name	Element	DO-BL	17	II-15
Document Number	DUI-Element	DO-BN-AC	16	II-14
Document (Serial) Number	Element	DO-BN	16	II-14
Document Serial Number (Preferred)	DUI-Element	DO-BN-AB	16	II-14
Document Title	Element	DO-BQ	63	II-92
Document Type	DUI-Element	DO-BL-AB	17	II-15
Downtime	DUI-Element		49	II-66
Downtime Modification	DUI-Element		49	II-66
Drawing Identification	DUI-Chain		28	II-45
Engineering Change Implementation	DUI-Element	IT-EP-AB	18	II-34

MIL-STD-482A
1 April 1974

APPENDIX I. Index of configuration status accounting data elements and data use identifiers (cont'd)

<u>TITLE</u>	<u>TYPE</u>	DOD 5000.12M <u>REF NO.</u>	<u>CM</u>	<u>PAGE NO.</u>
Engineering Change Incorporation Level	Element	EN-JO	19	II-35
Engineering Change Justification	Element	EN-JU	20	II-36
Engineering Change Priority	DUI-Element	AC-TJ-AB	21	II-38
Engineering Change Proposal Identification	Chain		22	II-39
Federal Item Identification Number	Element	FE-FA	26	II-43
Federal Item Identification Number – Current	DUI-Element	FE-FA-AB	26	II-43
Federal Item Identification Number – Deleted	DUI-Element	FE-FA-AC	26	II-43
Federal Item Identification Number – Former	DUI-Element	FE-FA-AE	26	II-43
Federal Item Identification Number – Substitute	DUI-Element	FE-FA-AD	26	II-43
Federal Stock Number	Chain	FE-IA	23	II-40
Federal Supply Class	Element	FE-KA	60	II-89
Federal Supply Classification	Chain	FE-KC	24	II-41
Federal Supply Group	Element	FE-KK	25	II-42
Fiscal Year	DUI-Element	YE-NA-AB	53	II-72
Functional Application	Element		27	II-44
Hours, Number of	Element	HO-VR	31	II-47
Item Documentation Identification	Chain		28	II-45
Item Life Cycle Event	Element	IT-EP	18	II-34
Kind of Accompanying Document	DUI-Element	DO-BL-AD	17	II-15
Latest Date of Linguistic Duty – First Language	DUI-Chain	DA-FA-AG	10	II-7
Latest Date of Linguistic Duty – Second Language	DUI-Chain	DA-FA-AH	10	II-7
Latest Date of Linguistic Duty – Third Language	DUI-Chain	DA-FA-AI	10	II-7
Latest Date of Linguistic Duty – Fourth Language	DUI-Chain	DA-FA-AJ	10	II-7
Latest Date of Linguistic Duty – Fifth Language	DUI-Chain	DA-FA-AK	10	II-7
Latest Date of Linguistic Duty – Sixth Language	DUI-Chain	DA-FA-AL	10	II-7
Latest Proficiency Evaluation Date – First Language	DUI-Chain	DA-FA-AM	10	II-7
Latest Proficiency Evaluation Date – Second Language	DUI-Chain	DA-FA-AN	10	II-7

MIL-STD-482A
1 April 1974

APPENDIX I. Index of configuration status accounting data elements and data use identifiers (cont'd)

<u>TITLE</u>	<u>TYPE</u>	<u>DOD 5000.12M</u> <u>REF NO.</u>	<u>CM</u>	<u>PAGE NO.</u>
Latest Proficiency Evaluation Date -- Third Language	DUI-Chain	DA-FA-AO	10	II-7
Latest Proficiency Evaluation Date -- Fourth Language	DUI-Chain	DA-FA-AP	10	II-7
Latest Proficiency Evaluation Date -- Fifth Language	DUI-Chain	DA-FA-AQ	10	II-7
Latest Proficiency Evaluation Date -- Sixth Language	DUI-Chain	DA-FA-AR	10	II-7
Lot Serial Number	Element	LO-TN	30	II-46
Man-Hours, Number of	DUI-Element	HO-VR-AB	31	II-47
Materiel Management Aggregate Code	DUI-Element		32	II-48
Materiel Management Code	Element		32	II-48
Material Resource	DUI-Element	CO-LK-AB	45	II-62
Medium of Recording	Element		78	II-96
Model Designator	Element		33	II-49
Modification Constraint Identification	Chain		34	II-50
Modification Installation Constraint	DUI-Element	CH-SA-AC	3	II-2
Modification Kit Number	Element		35	II-51
Modification Kit Proofing Requirement	DUI-Element	PR-SB-AE	43	II-60
Modification Numbers to Control and Agreement	DUI-Element		58	II-86
Modification Work Order Number	Chain	MO-BR	55	II-81
Month	Element	MO-NA	36	II-52
Month Flight Requirements Not Met	DUI-Element	MO-NA-AB	36	II-52
Month of Posting	DUI-Element	MO-NA-AD	36	II-52
Month Start	DUI-Element	MO-NA-AC	36	II-52
North Atlantic Treaty Country Code	DUI-Element	CO-XV-AB	54	II-73
Ordinal Date	Chain	OR-EB	56	II-84
Ordinance Alteration Number (Navy)	DUI-Chain	MO-BR-AC	55	II-81
Organizational Identification	Chain	OR-GD	37	II-53
Part Identification	Chain		39	II-54
Part Number	Element		61	II-90

MIL-STD-482A
1 April 1974

APPENDIX I. Index of configuration status accounting data elements and data use identifiers (cont'd)

<u>TITLE</u>	<u>TYPE</u>	<u>DOD 5000.12M REF NO.</u>	<u>CM</u>	<u>PAGE NO.</u>
Prior to Use Proofing Requirement	DUI-Element	PR-SB-AD	43	II-60
Processing Day	DUI-Element	DA-NA-AB	11	II-8
Procurement Instrument Identification Number	Chain		40	II-55
Procurement Instrument Serial Number	Element	PR-NB	41	II-56
Production Proofing Requirement	DUI-Element	PR-SB-AC	43	II-60
Proofing Requirement	Element	PR-SB	43	II-60
Provisioning Order Numbers	DUI-Element		58	II-86
Quantity	Element		44	II-61
Security Classification	Element	SE-FB	46	II-63
Serial Number	Element		47	II-64
Series Designator	Element		48	II-65
Ship Alteration Number	DUI-Chain	MO-BR-AB	55	II-81
Special Project Alteration Number	DUI-Chain	MO-BR-AF	55	II-81
Specific Form of Documentation	DUI-Element	DO-BL-AC	17	II-15
Specification Identification	DUI-Chain		28	II-45
Strategic Warning Hours, Number of	DUI-Element	HO-VR-AC	31	II-47
Supplementary Procurement Instrument Identification Number	Element		58	II-86
Tactical Computer Program Identification	DUI-Element	CO-LE-AC	4	II-3
Tier Index	DUI-Element		64	II-93
Time	Element		49	II-66
Type Designator	Element		50	II-67
Type, Model, Series Designator	Chain		51	II-68
Type, Model, Series Designator Suffix	Element		59	II-88
Type of Procurement Instrument	Element	TY-NM	42	II-57
Work Breakdown Structure Key	Chain		52	II-70
Work Breakdown Structure Location Index	Element		64	II-93
Year	Element	YE-NA	53	II-72

MIL-STD-482A
1 April 1974

APPENDIX I. *Index of configuration management in number sequence*

<u>CM</u>	<u>TITLE</u>	<u>DOD 5000.12M</u> <u>REF NO.</u>	<u>ARA</u>	<u>PAGE NO.</u>
2	Call/Order Modification Serial Number	CA-FB	DSA	II-1
3	Chronological Sequence	CH-SA	NAVY	II-2
4	Configuration Item Identification	CO-LE	NAVY	II-3
5	Configuration Item Variant	CO-LI	NAVY	II-4
6	Contract Basic Line Item Serial Number	CO-OG	DSA	II-5
8	Contract Modification Serial Number	CO-QS	DSA	II-6
10	Date	DA-FA	OASD(C)	II-7
11	Day	DA-NA	OASD(C)	II-8
12	Disposition Action	DJ-VI	NAVY	II-9
13	Document Change, Type of	DO-BI	NAVY	II-11
14	Document Change Level Serial Number	DO-BG	NAVY	II-12
15	Document Identification		NAVY	II-13
16	Document (Serial) Number	DO-BN	NAVY	II-14
17	Document Name	DO-BL	NAVY	II-15
18	Item Life Cycle Event	IT-EP	NAVY	II-34
19	Engineering Change Incorporation Level	EN-JO	NAVY	II-35
20	Engineering Change Justification	EN-JU	NAVY	II-36
21	Action Priority	AC-TJ	NAVY	II-38
22	Engineering Change Proposal Identification		NAVY	II-39
23	Federal Stock Number	FE-IA	DSA	II-40
24	Federal Supply Classification	FE-KC	DSA	II-41
25	Federal Supply Group	FE-KK	DSA	II-42
26	Federal Item Identification Number	FE-FA	DSA	II-43
27	Functional Application		NAVY	II-44
28	Item Documentation Identification		DSA	II-45
30	Lot Serial Number	LO-TN	NAVY	II-46
31	Hours, Number of	HO-VR	LOGDESMO	II-47

MIL-STD-482A
1 April 1974

APPENDIX I. *Index of configuration management in number sequence (cont'd)*

<u>CM</u>	<u>TITLE</u>	<u>DOD 5000.12M REF NO.</u>	<u>ARA</u>	<u>PAGE NO.</u>
32	Materiel Management Code		NAVY	II-48
33	Model Designator		NAVY	II-49
34	Modification Constraint Identification		NAVY	II-50
35	Modification Kit Number		NAVY	II-51
36	Month	MO-NA	OASD(C)	II-52
37	Organizational Identification	OR-GD	OASD(C)	II-53
39	Part Identification		DSA	II-54
40	Procurement Instrument Identification Number		DSA	II-55
41	Procurement Instrument Serial Number	PR-NB	DSA	II-56
42	Type of Procurement Instrument	TY-NM	DSA	II-57
43	Proofing Requirement	PR-SB	NAVY	II-60
44	Quantity		OASD(C)	II-61
45	Configuration Resource Affected	CO-LK	NAVY	II-62
46	Security Classification	SE-FB	DIA	II-63
47	Serial Number		DSA	II-64
48	Series Designator		NAVY	II-65
49	Time		OASD(C)	II-66
50	Type Designator		NAVY	II-67
51	Type, Model, Series Designator		NAVY	II-68
52	Work Breakdown Structure Key		NAVY	II-70
53	Year	YE-NA	OASD(C)	II-72
54	Countries of the World	CO-XV	DIA	II-73
55	Modification Work Order Number	MO-BR	NAVY	II-81
56	Ordinal Date	OR-EB	OASD(C)	II-84
57	Day of Year	DA-OB	OASD(C)	II-85
58	Supplementary Procurement Instrument Identification Number		DSA	II-86

MIL-STD-482A
1 April 1974

APPENDIX I. *Index of configuration management in number sequence (cont'd)*

<u>CM</u>	<u>TITLE</u>	<u>DOD 5000.12M REF NO.</u>	<u>ARA</u>	<u>PAGE NO.</u>
59	Type, Model, Series Designator Suffix		NAVY	II-88
60	Federal Supply Class	FE-KA	DSA	II-89
61	Part Number		DSA	II-90
62	Configuration Identification	CO-LC	NAVY	II-91
63	Document Title	DO-BQ	NAVY	II-92
64	Work Breakdown Structure Location Index		NAVY	II-93
77	Complete Configuration Identification	CO-GV	NAVY	II-95
78	Medium of Recording		NAVY	II-96

MIL-STD-482A
1 April 1974

CM-2

APPENDIX II. *Standard data element and related features*

EFFECTIVE DATE	68-05-15	ARA DSA	REFERENCE NUMBER	CA-FB
DATA ELEMENT	Call/Order Modification Serial Number		ABBREVIATION	C-O-MOD-SN
DEFINITION	A number indicating place in the series and used in conjunction with other information as a means of identifying a modification to a call or order issued pursuant to the Armed Services Procurement Regulations. (See Section XX, ASPR)			
DATA USE IDENTIFIER NAME	AA Call/Order Modification Serial Number	ABBREVIATION	C-O-MOD-SN	EXPLANATION See definition.
DATA CODE CHARACTERISTICS		LENGTH	02	STRUCTURE A
DATA ITEM NAME	Literal	ABBREVIATION	None	CODE
				EXPLANATION AA through ZZ

Page 1 of 1

DATA ELEMENT Call/Order Modification Serial Number

CA-FB

II-1

MIL-STD-482A
1 April 1974

CM-3

APPENDIX II. Standard data element and related features (cont'd)

EFFECTIVE DATE 68-05-15	ARA NAVY	REFERENCE NUMBER CH-SA
DATA ELEMENT Chronological Sequence		ABBREVIATION CHRON-SEQ
DEFINITION The arrangement of actions in their order of occurrence.		
DATA USE IDENTIFIER NAME	ABBREVIATION	EXPLANATION
AA Chronological Sequence	CHRON-SEQ	See definition.
AB Action Sequence	ACT-SEQ	See definition.
AC Modification Installation Constraint	MOD-INST-CONST	The mandatory chronological order of installation of two engineering changes.
DATA CODE CHARACTERISTICS	LENGTH 01	STRUCTURE A
DATA ITEM NAME	ABBREVIATION	CODE
Prior To	None	P
		EXPLANATION
		Subject action must be taken before a second action.
Subsequent To	None	S
		Subject action must be taken after the first action.
Concurrent With	None	W
		Subject action must be taken at the same time as another action.

Page 1 of 1

DATA ELEMENT Chronological Sequence

CH-SA

MIL-STD-482A
1 April 1974

CM-4

APPENDIX II. *Standard data element and related features (cont'd)*

EFFECTIVE DATE 68-09-27 ARA NAVY REFERENCE NUMBER CO-LE

DATA ELEMENT Configuration Item Identification ABBREVIATION CII

DEFINITION Designation of an item, discrete assembly, or part for the application of the management disciplines of configuration identification, control, and status accounting.

DATA USE IDENTIFIER NAME	ABBREVIATION	EXPLANATION
AA Configuration Item Identification	CII	See definition.
AB Computer Program Identification	CPI	The unique identifier of a computer program.
AC Tactical Computer Program Identification	TCPI	The unique identifier of a tactical computer program.

RELATED DATA CHAINS
CO-GV Complete Configuration Identification
CO-LC Configuration Identification

DATA CODE CHARACTERISTICS LENGTH 07 STRUCTURE AN

DATA ITEM NAME	ABBREVIATION	CODE	EXPLANATION
Literal	None		The items to be managed are designated by the procuring activity. The identifying number is assigned by the design organization. This number is non-structured and will establish a base for serializing individual units of an item. When changes to a design are of such a nature or magnitude to preclude the modification of existing units to the current design, a new configuration item identifier shall be assigned and become a base for new serial number assignment.

Page 1 of 1

DATA ELEMENT Configuration Item Identification

CO-LE

II-3

MIL-STD-482A
1 April 1974

CM-5

APPENDIX II. *Standard data element and related features (cont'd)*

EFFECTIVE DATE	68-09-27	ARA	NAVY	REFERENCE NUMBER	CO-LI
DATA ELEMENT	Configuration Item Variant			ABBREVIATION	CI-VAR
DEFINITION	A differentiation from the basic configuration of the item, assembly or part.				
DATA USE IDENTIFIER NAME		ABBREVIATION		EXPLANATION	
AA Configuration Item Variant		CI-VAR		See definition.	
RELATED DATA CHAINS					
CO-GV Complete Configuration Identification					
CO-LC Configuration Identification					
DATA CODE CHARACTERISTICS		LENGTH	03	STRUCTURE	AN
DATA ITEM NAME	ABBREVIATION	CODE		EXPLANATION	
Literal	NONE			Used with the configuration item identification for the basic design.	

Page 1 of 1

DATA ELEMENT Configuration Item Variant

CO-LI

MIL-STD-482A
1 April 1974

CM-6

APPENDIX II. *Standard data element and related features (cont'd)*

EFFECTIVE DATE	68-05-15	ARA DSA	REFERENCE NUMBER	CO-OG
DATA ELEMENT	Contract Basic Line Item Serial Number		ABBREVIATION	CONTBLISN
DEFINITION	A number indicating place in the series and used in conjunction with other information as a means of identifying a contract basic line item issued pursuant to the Armed Services Procurement Regulation. (See Section XX, ASPR)			
DATA USE IDENTIFIER NAME	AA Contract Basic Line Item Serial Number	ABBREVIATION	CONTBLISN	EXPLANATION
				See definition.
DATA CODE CHARACTERISTICS		LENGTH	04	STRUCTURE
				N
DATA ITEM NAME	Literal	ABBREVIATION	None	CODE
				EXPLANATION
				Within a contract, contract line items shall be numbered from 0001 to 9999. Any given contract line item number shall not be assigned more than once in a contract.

Page 1 of 1

DATA ELEMENT Contract Basic Line Item Serial Number

CO-OG

II-5

MIL-STD-482A
1 April 1974

CM-8

APPENDIX II. *Standard data element and related features (cont'd)*

EFFECTIVE DATE	68-05-15	ARA DSA	REFERENCE NUMBER	CO-QS
DATA ELEMENT	Contract Modification Serial Number		ABBREVIATION	CONT-MOD-SN
DEFINITION	A number indicating place in the series and used in conjunction with other information as a means of identifying a contract modification issued pursuant to the Armed Services Procurement Regulations. (See Section XX, ASPR)			
DATA USE IDENTIFIER NAME		ABBREVIATION	EXPLANATION	
AA Contract Modification Serial Number		CONT-MOD-SN	See definition.	
DATA CODE CHARACTERISTICS		LENGTH	03	STRUCTURE AN
DATA ITEM NAME	ABBREVIATION	CODE	EXPLANATION	
Literal	None		001-999,A01-Z99	

Page 1 of 1

DATA ELEMENT Contract Modification Serial Number

CO-QS

II-6

MIL-STD-482A
1 April 1974

CM-10

APPENDIX II. *Standard data chain and related features (cont'd)*

EFFECTIVE DATE 69-07-01

ARA OASD(C)

REFERENCE NUMBER DA-FA

DATA CHAIN Date

ABBREVIATION DATE

DEFINITION A notation which specifies a given day of the Gregorian Year. This notation provides for the identification of the year, the month, and the day in that sequence.

DATA USE IDENTIFIER NAME	ABBREVIATION	EXPLANATION
AA Date	DATE	See definition.
AB Configuration Audit Schedule Date - Physical	CASD-PHYS	Scheduled date of configuration audit of physical characteristics of a configuration element.
AC Configuration Audit Schedule Date-Functional	CASD-FUNC	Scheduled date of configuration audit of functional characteristics of a configuration element.
AD Configuration Audit Actual Date - Physical	CAAD-PHYS	Actual date of configuration audit of physical characteristics of a configuration element.
AE Configuration Audit Actual Date - Functional	CAAD-FUNC	Actual date of configuration audit of functional characteristics of a configuration element.
AF Date of Document	DOC-DATE	Date a specific document is authenticated.
AG Latest Date of Linguistic Duty, First Language	LTST-DATE-LING- DUTY-FIRST-LANG	The latest terminal date of linguistic duty in a language.
AH Latest Date of Linguistic Duty, Second Language	LTST-DATE-LING- DUTY-SECD-LANG	
AI Latest Date of Linguistic Duty, Third Language	LTST-DATE-LING- DUTY-THIRD-LANG	
AJ Latest Date of Linguistic Duty, Fourth Language	LTST-DATE-LING- DUTY-FOURTH-LANG	
AK Latest Date of Linguistic Duty, Fifth Language	LTST-DATE-LING- DUTY-FIFTY-LANG	
AL Latest Date of Linguistic Duty, Sixth Language	LTST-DATE-LING- DUTY-SIXTH-LANG	
AM Latest Proficiency Evaluation Date, First Language	LTST-PROF-EVAL- DATE-FIRST-LANG	The latest evaluation date of an individual's proficiency in a language.
AN Latest Proficiency Evaluation Date, Second Language	LTST-PROF-EVAL- DATE-SECD-LANG	
AO Latest Proficiency Evaluation Date, Third Language	LTST-PROF-EVAL- DATE-THIRD-LANG	
AP Latest Proficiency Evaluation Date, Fourth Language	LTST-PROF-EVAL- DATE-FOURTH-LANG	
AQ Latest Proficiency Evaluation Date, Fifth Language	LTST-PROF-EVAL- DATE-FIFTH-LANG	
AR Latest Proficiency Evaluation Date, Sixth Language	LTST-PROF-EVAL- DATE-SIXTH-LANG	

DATA CODE CHARACTERISTICS

LENGTH 06

STRUCTURE N

REFERENCE NO.

DATA ELEMENT NAME

STRUCTURE

YE-NA

Year

NN

MO-NA

Month

NN

DA-NA

Day

NN

DATA CHAIN Date

DA-FA

MIL-STD-482A
1 April 1974

CM-11

APPENDIX II. Standard data element and related features (cont'd)

EFFECTIVE DATE 66-10-27 ARA OASD(C) REFERENCE NUMBER DA-NA

DATA ELEMENT Day ABBREVIATION DA

DEFINITION One of the 24 hour periods of a month as defined by the Gregorian calendar.

DATA USE IDENTIFIER NAME	ABBREVIATION	EXPLANATION
AA Day	DA	See definition.
AB Processing Day	PROCS-DA	The day a transaction is processed.

RELATED DATA CHAINS

CO-GT Complete Calendar Date

CO-GX Complete Date, Cartographic Event

DA-FA Date

DATA CODE CHARACTERISTICS LENGTH 02 STRUCTURE N

DATA ITEM NAME	ABBREVIATION	CODE	EXPLANATION
Literal	None	01-31	The ordinal values (data items) of this data element are represented by a two digit number.

Page 1 of 1

DATA ELEMENT Day

DA-NA

II-8

MIL-STD-482A
1 April 1974

CM-12

APPENDIX II. *Standard data element and related features (cont'd)*

EFFECTIVE DATE 68-05-15

ARA NAVY

REFERENCE NUMBER DI-VI

DATA ELEMENT Disposition Action

ABBREVIATION DISP-ACTN

DEFINITION The responsive action being taken, taken, or to be taken in a specific instance.

DATA USE IDENTIFIER NAME

AA Disposition Action

AB Disposition Action,

Individual's Request, Debt

AC Disposition Action,

Service Decision, Debt

AD Disposition Action,

Commanding Officer, Uniform

Code of Military Justice

AE Disposition Action,

Convening Authority, Uniform

Code of Military Justice

AF Disposition Action,

Supervisory Authority, Uniform

Code of Military Justice

AG Disposition Action,

Secretary, Uniform Code of

Military Justice

AH Disposition Action,

Review Court, Uniform Code

of Military Justice

AI Disposition Action, Appeals

Court, Uniform Code of

Military Justice

AJ Disposition Action, Executive, Uniform

Code of Military Justice

ABBREVIATION

DISPN-ACTN

DISPN-ACTN-IND-

REQ-DEBT

DISPN-ACTN-SVC-

DCN-DEBT

DISPN-ACTN-CO-

UCMJ

DISPN-ACTN-CA-

UCMJ

DISPN-ACTN-SA-

UCMJ

DISPN-ACTN-SEC-

UCMJ

DISPN-ACTN-REV-

CRT-UCMJ

DISPN-ACTN-APL-

CRT-UCMJ

DISPN-ACTN-

EXEC-UCMJ

EXPLANATION

See definition.

Action instituted upon notification of indebtedness to the United States.

Disposition of individual's request on indebtedness to the United States.

Commander's disposition on an article 15 punishment.

Convening authority's disposition on a court martial sentence.

Supervisory authority's disposition on a court martial sentence.

Secretary of the service concerned's disposition on a court martial sentence.

Court of military review's disposition on a court martial sentence.

Court of military appeal's disposition on a court martial sentence.

Executive's disposition on a court martial sentence.

DATA CODE CHARACTERISTICS

LENGTH 02

STRUCTURE AN

DATA ITEM NAME

Accept

Acknowledge

Activate

Appeal

Apply

Approve

Approve, partially

Authorize

Cancel

Change

Collect

Comment

Complete

Complete, partially

Correct

Defer

ABBREVIATION

ACPT

ACK

ACTVT

APL

APLY

APV

APV-PRTLY

AUTH

CANC

CHNG

CLT

CMT

COMPL

COMPL-PRTLY

CORR

DEFER

CODE

01

02

03

04

05

06

07

09

10

11

12

13

14

15

16

17

EXPLANATION

Receive affirmatively.

Make known receipt.

Place in service.

Petition for redress.

Put to use or execute.

Judge favorably.

Judge favorably with minor exceptions or within cognizance.

Empower.

Rescind.

Make different, convert, increase, decrease, modify, or replace.

Obtain benefit or payment.

Express an opinion.

Perform totally.

Perform in part.

Make right.

Suspend or postpone indefinitely (pending).

Page 1 of 2

DATA ELEMENT Disposition Action

DI-VI

II-9

MIL-STD-482A
1 April 1974

CM-12 (cont'd)

APPENDIX II. *Standard data element and related features (cont'd)*

DATA ITEM NAME	ABBREVIATION	CODE	EXPLANATION
Demote	DMT	18	Reduce to a lower grade, rank, class, or position.
Detain	DTN	20	Administratively delay for a specific period.
Disapprove	DSAPV	21	Pass unfavorable judgment upon.
Elect	ELECT	23	Make a choice.
Encode	ENCD	24	Convert data from one communication system to another system.
Excuse	EXCS	25	Absolve of blame or responsibility.
Extend	EXT	26	Prolong.
Forward	FWD	27	Advance.
Insert	INSR	28	Add data to existing records.
Mechanize	MECZ	29	Put in automatic form.
Mitigate	MITGT	30	Make less severe.
Pay	PAY	31	Disburse funds.
Project	PROJ	33	Forecast.
Promote	PROM	34	Advance to a higher grade, rank, class, or position.
Reconcile	RCNCL	36	Bring into agreement.
Refund	REFD	37	Return monies to the original source.
Register	RGTR	38	Record formally and exactly.
Reject	REJ	39	Refuse acceptance of something.
Release	RLSE	40	Set free from restraint.
Remit	REMIT	41	Refrain from inflicting a penalty.
Reply	REPLY	43	Respond.
Resume	RSM	44	Begin again after an interruption.
Retain	RET	45	Hold control or possess.
Retest	RTEST	46	Repeat an examining process.
Retrieve	RTRV	47	Recover data from records.
Return	RTN	48	Pass back.
Review	REV	49	Inspect critically.
Search	SRCH	50	Examine records for particular information.
Start	START	51	Begin.
Stop	STOP	52	To cease or halt.
Test	TEST	54	Examine critically.
Transfer	TRANS	55	Relocate.
Update	UPDT	56	Make data current.
Validate	VLDT	57	Ratify correctness or verify.
Waive	WAIVE	59	Forego right.

Page 2 of 2

DATA ELEMENT Disposition Action

DI-VI

II-10

MIL-STD-482A
1 April 1974

CM-13

APPENDIX II. *Standard data element and related features (cont'd)*

EFFECTIVE DATE	68-05-15	ARA	NAVY	REFERENCE NUMBER	DO-BI
DATA ELEMENT	Document Change, Type of			ABBREVIATION	DOC-CHGE-TYPE-OF
DEFINITION	A classification of change by common attributes.				
DATA USE IDENTIFIER NAME		ABBREVIATION		EXPLANATION	
AA Document Change, Type of		DOC-CHGE-TYPE-OF		See definition.	
DATA CODE CHARACTERISTICS		LENGTH	01	STRUCTURE	A
DATA ITEM NAME	ABBREVIATION	CODE		EXPLANATION	
Addendum	None	D		A thing added. Interim data item. Supplement preferred.	
Alteration	None	L		Made different without thereby changing into something else. Interim data item. Modification preferred.	
Amendment	None	A		A change which incorporates all prior changes into the amendment package, but not into the basic document.	
Change	None	C		Identification of the change status of any document. Interim data item. Amendment preferred.	
Errata	None	E		A list or pages of lists of errors, discovered after printing, with the corrections.	
Modification	None	M		Partial alteration. A limitation or qualification.	
Notice	None	N		A directive of a one-time or brief nature with self-cancelling provision that has the same force and effect as an instruction.	
Revision	None	R		A revision incorporating all changes and amendments up to and including the date of issue.	
Supplement	None	S		Added data to correct a deficiency.	
Update	None	U		An updating.	

Page 1 of 1

DATA ELEMENT Document Change, Type of

DO-BI

II-11

MIL-STD-482A
1 April 1974

CM-14

APPENDIX II. *Standard data element and related features (cont'd)*

EFFECTIVE DATE	68-05-15	ARA	NAVY	REFERENCE NUMBER	DO-BG
DATA ELEMENT	Document Change Level Serial Number	ABBREVIATION	DOC-CHGE-LEVEL-SN		
DEFINITION	A number indicating place in the series and used in conjunction with other information as a means of identifying the change status of any document.				
DATA USE IDENTIFIER NAME		ABBREVIATION		EXPLANATION	
AA Document Change Level Serial Number		DOC-CHGE-LEVEL-SN		See definition.	
DATA CODE CHARACTERISTICS		LENGTH	02	STRUCTURE	AN
DATA ITEM NAME		CODE		EXPLANATION	
Literal	ABBREVIATION None	01-ZZ		Assign sequentially.	

Page 1 of 1

DATA ELEMENT Document Change Level Serial Number

DQ-BG

II-12

MIL-STD-482A
1 April 1974

CM-15

APPENDIX II. *Standard data chain and related features (cont'd)*

EFFECTIVE DATE	ARA NAVY	REFERENCE NUMBER
DATA CHAIN Document Identification		ABBREVIATION DOC-IDENT
DEFINITION	A data chain that completely identifies a document. The data chain consists of all, or part, of the following data elements: Organizational Identification; Document Title; Document Name; Document Number; Document Change, Type of; Document Change Level Serial Number; Document Change, Type of; Document Change Level Serial Number; and Date.	

Information: Only one data chain is proposed. If other data chains are in use, they should be submitted for review to determine if other data chains should be considered for standardization action.

DATA USE IDENTIFIER NAME	ABBREVIATION	EXPLANATION
AA Document Identification	DOC-IDENT	See definition.
DATA CODE CHARACTERISTICS	LENGTH 96	STRUCTURE AN
DATA ITEM NAME	ABBREVIATION	CODE
		EXPLANATION
		Data chain consists of all or part of the following data elements:
		Organizational Identification
		Document Title
		Document Name
		Document Number
		Document Change, Type of
		Document Change Level Serial Number
		Document Change, Type of
		Document Change Level Serial Number
		Date

Page 1 of 1

DATA CHAIN Document Identification

II-13

MIL-STD-482A
1 April 1974

CM-16

APPENDIX II. Standard data element and related features (cont'd)

EFFECTIVE DATE	70-06-30	ARA	NAVY	REFERENCE NUMBER	DO-BN
DATA ELEMENT	Document (Serial) Number	ABBREVIATION	DOC-SER-NO		
DEFINITION	An alpha-numeric indicating place in a series and used in conjunction with organization identification and type of document as the means of uniquely identifying one document of a particular type.				
DATA USE IDENTIFIER NAME		ABBREVIATION		EXPLANATION	
AA Document (Serial) Number		DOC-SER-NO		See definition.	
AB Document Serial Number (Preferred)		DOC-SER-NO		See definition.	
AC Document Number		DOC-NO		See definition.	
DATA CODE CHARACTERISTICS		LENGTH	15	STRUCTURE	AN
DATA ITEM NAME		ABBREVIATION		CODE	
Literal		None			
				EXPLANATION	
				Slashes, dashes, asterisks, etc.	
				are included.	

Page 1 of 1

DATA ELEMENT Document (Serial) Number

DO-BN

MIL-STD-482A
1 April 1974

CM-17

APPENDIX II. *Standard data element and related features (cont'd)*

EFFECTIVE DATE	71-03-31	ARA	NAVY	REFERENCE NUMBER	DO-BL
DATA ELEMENT	Document Name			ABBREVIATION	DOC-NAME
DEFINITION	The designation of specified formal papers and records of similar characteristics.				
DATA USE IDENTIFIER NAME		ABBREVIATION		EXPLANATION	
AA Document Name		DOC-NAME		See definition.	
AB Document Type		DOC-TYPE		The category of formal papers or records. (Note—These documents represent an indexing of document types and not a document ordering criterion).	
AC Specific Form of Documentation		SPEC-FORM-DOC			
AD Kind of Accompanying Document		KIND-OF-ACCPYG-DOC			
DATA CODE CHARACTERISTICS		LENGTH	03	STRUCTURE	AN
DATA ITEM NAME	ABBREVIATION	CODE		EXPLANATION	
Handbook	HDBK	001		A reference book other than federal or military that can be easily handled or consulted.	
Handbook, Federal	FED-HDBK	002		A reference book that is published by a component other than a military department.	
Handbook, Military	MIL-HDBK	003		A reference book that is published by a military department of the U. S. Government.	
Encyclopedia	ENCY	004		A summary or branch of knowledge.	
Glossary	GLOSS	005		A collection of items related to a special area of knowledge or uses.	
Catalog	CAT	007		A list or register.	
Bulletin, Technical	TB	010		A technical statement applicable to a system, subsystem, or item (Navy).	
Bulletin, Electronic Information	ELECT-INFO-BUL	011		Electronic information applicable to a system, subsystem, or item (Navy).	
Bulletin, Aircraft Engine	AC-ENG-BUL	012		Information applicable to an aircraft engine (Navy).	
Bulletin, Supply	SPLY-BUL	013		Information applicable to supply activities.	
Bulletin, Army-Navy-Air Force	ANA-BUL	014		Coordinated technical/procurement requirements of the Army-Navy-Air Force.	
Directive, Department of Defense	DOD-DIR	017		Department of Defense publication for enunciating policy matters.	
Directive, Configuration Control Board	CONFIG-CONT-BD-DIR	018		A configuration control board order.	
Drawing, Arrangement	ARR-DWG	020		An outline in any projection or perspective.	
Drawing, Assembly	ASSY-DWG	021		Depicts relationship of (A) two or more parts, or (B) a combination of parts and subordinate assemblies, or (C) a group of assemblies.	

Page 1 of 19

DATA ELEMENT Document Name

DO-BL

II-15

MIL-STD-482A
1 April 1974

CM-17 (cont'd)

APPENDIX II. *Standard data element and related features (cont'd)*

DATA ITEM NAME	ABBREVIATION	CODE	EXPLANATION
Drawing, Wiring Harness	WG-HARN-DWG	022	Shows the path of a group of wires laced together in a configuration.
Drawing, Book Form	BK-FORM-DWG	023	An assemblage of drawings and related data.
Drawing, Construction	CNSTR-DWG	024	Delineates the design of buildings, structures, or related construction.
Drawing, Source Control	SCE-CONT-DWG	025	Depicts a commercial item which provides the performance, installation, and interchangeability characteristics for a critical application.
Drawing, Specification Control	SPEC-CONT-DWG	026	Depicts a commercial item where all of the engineering and test requirements specified can be met in commercial channels.
Drawing, Interface Control	INTFC-CONT-DWG	027	Depicts physical and functional interface engineering requirements of a subsystem.
Drawing, Correlation	CRRL-DWG	028	Depicts physical and functional engineering requirements among components in a subsystem.
Drawing, Detail	DET-DWG	029	Depicts complete requirements for the parts(s) delineated thereon.
Drawing, Diagram, Electrical/Electronic	ELEC-ELECT-DIAG-DWG	030	Depicts a functional performance of an installation assembly.
Drawing, Diagram, Electrical/Electronic Single Line	SL-ELEC-ELECT-DIAG-DWG	032	Shows the course of system of an electrical/electronic circuit in single lines.
Drawing, Diagram, Electrical/Electronic, Schematic or Elementary	SCHEM-ELE-ELEC-DIAG-DWG	034	Shows the electrical/electronic connections and functions of a circuit arrangement.
Drawing, Diagram, Electrical/Electronic Connection Wiring	CONN-WG-ELEC-ELECT-DIAG-DWG	036	Shows the electrical/electronic connections of an installation.
Drawing, Diagram, Electrical/Electronic Interconnection	INTCON-ELEC-ELECT-DIAG-DWG	038	Shows external electrical/electronic connections between unit assemblies.
Drawing, Diagram, Mechanical	MECH-DIAG-DWG	040	A scale line drawing of a mechanical device.
Drawing, Diagram, Mechanical Schematic	NONE	041	Illustrates the sequence of a mechanical device.
Drawing, Diagram, Piping	PP-DIAG-DWG	042	Depicts the interconnection of piping, tubing or hose components.
Drawing, Elevation	EL-DWG	043	Depicts vertical projections of buildings or structures.
Drawing, Envelope	ENV-DWG	044	Discloses configuration, performance and test requirements.
Drawing, Erection	ERECT-DWG	045	Shows procedures and operation sequence for assembly.
Drawing, Inseparable Assembly	INSEP-ASSY-DWG	046	Delineates items separately fabricated and permanently joined together.
Drawing, Installation	INSTL-DWG	047	An outline drawing showing general configuration and information to install an item.

MIL-STD-482A
1 April 1974

CM-17 (cont'd)

APPENDIX II. *Standard data element and related features (cont'd)*

DATA ITEM NAME	ABBREVIATION	CODE	EXPLANATION
Drawing, Installation Control	INSTL-CONT-DWG	048	Sets forth information for an item in terms of area, weight, and space.
Drawing, Kit	KIT-DWG	049	Depicts a packaged unit, item or group of items, instructions, photographs or drawings.
Drawing, Matched Parts	MTCHD-PT-DWG	051	Depicts parts which are matched.
Drawing, Optical Elements	OPT-ELEM-DWG	052	Definitions and requirements for line drawings pertaining to optical elements.
Drawing, Optical Systems	OPT-SYS-DWG	053	Definitions and requirements for drawings pertaining to optical systems.
Drawing, Plan	PLN-DWG	054	Depicts a horizontal projection of a structure or system.
Drawing, Plot (Plat), Plan	PLN-PLT-DWG	055	Represents areas where structures are indicated with information regarding their relationship to other structures.
Drawing, Tabulated	TAB-DWG	056	Depicts items of constant and variable characteristics.
Drawing, Tube Bend	TUBE-BN-DWG	057	Depicts complete bend data.
Drawing, Undimensioned	UNDM-DWG	058	Depicts a template, a pattern, or a printing circuit.
Drawing, Printed Wiring Master	PW-MAS-DWG	059	Depicts the dimensional limits or grid location.
Drawing, Vicinity Plan	VIC-PLN-DWG	060	A plan showing the relationship of a site to the surrounding area.
List, Index	IDX-LIST	ILA	Depicts the identity of drawing lists.
List, Data	DATA-LIST	DLA	A tabulation of all engineering documents pertaining to items.
Request for Waiver/Deviation	REQ-WVR-DEV	069	A document used to submit a request for waiver/deviation.
Illustrated Parts Breakdown	IPB	070	A pictorial illustration and listing of the parts to support an equipment or item.
Instructions	INSTR	071	Conveys knowledge, direction or order.
Letters	LTR	072	A written communication.
List, Allowance Parts	APL	073	Describes an equipment/component and lists both required organizational allowance repair parts and other parts available in the supply system for support.
List, Provisioning Parts	PPL	074	Includes the end item and reflects all assemblies, subassemblies, and detail parts that can be removed without destruction of the part which they are attached.
List, Initial Supply Support	INIT-SPLY-SPRT-LIST	075	Items required for initial supply support (USAF).
List, Initial Outfitting	INIT-OFT-LIST	076	Items required for initial operation.
List, Ordnance Equipment	ORD-EQUIP-LIST	077	Ordnance equipment required for a Naval ship or other activity.
List, Allowance Equipage	ALLOW-EQUIP-LIST	078	Used to specify requirements for ship-board/shore activity equipage.

MIL-STD-482A
1 April 1974

CM-17 (cont'd)

APPENDIX II. *Standard data element and related features (cont'd)*

DATA ITEM NAME	ABBREVIATION	CODE	EXPLANATION
List, Consolidated Ships Allowance	COSAL	079	A COSAL (coordinated shipboard allowance list) is a ship/activity allowance list, tailored to suit an individual ship/shore activity's material support requirements, and serves as both a technical and supply document.
List, Qualified Parts	QPL	080	Tabulation of previously accepted terms.
List, Inspection Equipment	INSP-EQUIP-LIST	ELA	Tabulation of equipment necessary to inspect a system, subsystem, or item.
List, Specification	SPEC-LIST	082	Tabulation of specifications of a system subsystem, or item.
List, Gage	GAGE-LIST	GLA	Tabulation of gages used for inspection.
List, Contents	CONT-LIST	084	Tabulation of contents of a document.
List, Parts	PT-LIST	PLA	Tabulation of all parts and bulk materials used in an item.
List, Listing of Parts	LIST-PT-LIST	LLA	Tabulation of two or more parts lists pertaining to a system or subsystem.
List, Equipment	EQUIP-LIST	087	Tabulation of equipments or items necessary to a system or subsystem.
List, Supplementary Quality Assurance	SUPP-QUAL-ASSUR-LIST	088	Tabulation of additional quality assurance requirements.
List, Inspection Equipment Documents	EQUIP-DOC-LIST	ELB	Tabulation of inspection equipment documents required.
List, Index, Equipment and Numbers	IDX-EQUIP-NO-LIST	ELC	Index of type, model, series of inspection equipment and reference numbers.
List, Index of Inspection Equipment	IDX-INSP-EQUIP-LIST	ELD	Index of all inspection equipment.
List, Index of Inspection Numbers	IDX-INSP-NO-LIST	ELE	Index of inspection equipment by numbers.
List, Wiring	WIRE-LIST	WLA	A drawing consisting of tabular data and instructions required to establish wiring connections within or between units of an equipment, or between equipments, sets, or assemblies of a system.
Manual, Training	TNG-MNL	097	A document used for training purposes.
Manual, Operating	OPN-MNL	098	A reference for the operation of equipment or discipline.
Manual, Technical	TECH-MNL	099	Technical information for an equipment or discipline.
Manual, Field	FLD-MNL	100	Instructions for use in military operations.
Manual, Supply	SPLY-MNL	101	Information related to military equipment for operation of a military command, including food, clothing, arms, ammunition, fuels, materials, and machinery.
Manual, Service	SERV-MNL	102	Information pertaining to maintenance of combat equipment.
Manual, Standardization	STD-MNL	104	Prescribing standardization policies, procedures, and instructions.
Manual, Administrative	ADM-MNL	105	Information prescribing standard administrative procedures.

Page 4 of 19

DATA ELEMENT Document Name

DO-BL

MIL-STD-482A

1 April 1974

CM-17 (cont'd)

APPENDIX II. *Standard data element and related features (cont'd)*

DATA ITEM NAME	ABBREVIATION	CODE	EXPLANATION
Maps, General	GEN-MAPS	107	A representation indicating a group of features as land masses, countries, planets, usually reproduced on a plane surface.
Maps, Port	PRT-MAPS	108	An orderly representation indicating a specific group of features of an area, using various symbols to denote elevations of land or structures above sea level or a datum point. Usually includes roads, streets, quays, piers, surface facilities such as Crane.
Memorandum	MEMO	110	A transmittal of information for the record.
Newspaper	NEWS	114	A paper printed and distributed at stated intervals, usually daily or weekly, to convey news or advocate opinions.
Notice, Drawing Change	DWG-CHG-NOTE	N1A	A written announcement of a change to a drawing(s).
Notice, Specification Change	SPEC-CHG-NOTE	N1B	A document used to propose, transmit and record changes to a specification.
Notice of Revision	REV-NOTE	N1C	A form used to propose revisions to a drawing or list, and, after approval, to notify users that the drawing or list has been, or will be, revised accordingly.
Notice, Design Change	DSGN-CHG-NOTE	N1E	A provisioning document which transmits government approved engineering changes incorporated in the end item to the logistics support activity.
Notice, Directive Change	DIR-CHG-NOTE	N1F	A written announcement of a change to a directive.
Notice, Instruction Change	INSTR-CHG-NOTE	N1G	A written announcement of a change to an instruction.
Notice, Waiver/Deviation	WVR-DEVN-NOTE	N1H	A specific written authorization of an approved waiver/deviation.
Notice, Cancellation	CANC-NOTE	N1J	Termination notification of an agreement or contract.
Notice, Technical	TECH-NOTE	N1K	A written announcement of technical information.
Order, Contract Change	CON-CHG-ORD	126	An order to change the provisions of an existing contract.
Order, Administrative	ADMIN-ORD	127	An order prescribing an interior intra-organizational practice.
Order, Military	MIL-ORD	128	Any command or direction by competent military authority.
Order, Procedural	PROC-ORD	129	A direction to delineate a process.
Order, Modification Work	MOD-WK-ORD	130	An instructional order modification of material, includes time compliance technical order, technical order, ordnance alteration, air alteration, air force time compliance technical order, special project alteration, and ship alteration.

MIL-STD-482A

1 April 1974

CM-17 (cont'd)

APPENDIX II. *Standard data element and related features (cont'd)*

DATA ITEM NAME	ABBREVIATION	CODE	EXPLANATION
Order, Aircraft	AC-ORD	133	An authoritative direction applicable to physical condition of an aircraft.
Order, Lubrication	LUB-ORD	134	Uniform requirements for lubrication of equipment.
Order, General	GEN-ORD	135	An authoritative order that includes permanent directive matter.
Order, Engineering	ENGRG-ORD	136	An engineering directive or announcement.
Pamphlet	PMFLT	139	A brief book of printed matter.
Periodical	PERD	140	A publication with a fixed interval between issues.
Photomap	PHTMP	141	A map consisting of matched aircraft photographs.
Pictomap	PCTMP	143	A map expressing and representing an idea.
Plan, Technical Development	TECH-DEV-PLN	144	A response to a specific operational requirement.
Plan, Integrated Logistic Support	INTEG-LOG-SPRT-PLN	145	A plan to coordinate and systemize planning, design, acquisition, distribution, and management of major elements of logistic support.
Plan, Configuration Management	CM-PLN	146	A discipline applying technical and administrative direction and surveillance to (1) identify and document the characteristics of a configuration item, (2) control changes to those characteristics, and (3) record and report change processing implementation status.
Plans, City	CTY-PLN	147	A scheme for any work pertaining to a city.
Proposals	PRPSL	148	An offer, a proposition, or a plan for consideration.
Proposals, Engineering Change, Preliminary (P)	PECP	150	A document by which an engineering change proposal is forwarded for preliminary evaluation.
Proposals, Engineering Change, Formal (F)	FECP	151	A document by which an engineering change is proposed.
Regulation	REG	153	A document to govern or direct.
Report	RPRT	154	An account or formal record covering a designated subject.
Report, Technical	TECH-RPRT	155	To give an account of a technical investigation.
Report, Trip	TRIP-RPRT	156	A report generated as the result of travel containing status information and presenting situation as of a specific date.
Requirements, General	GEN-OP-REQT	157	Statement in broad terms of the need within each function and support area.
Requirements, Specific Operational	SPEC-OP-REQT	158	Statement of the need for a capability, outlines characteristics, defines performance, establishes goals for reliability, maintainability, and personnel requirements.

MIL-STD-482A
1 April 1974

CM-17 (cont'd)

APPENDIX II. *Standard data element and related features (cont'd)*

DATA ITEM NAME	ABBREVIATION	CODE	EXPLANATION
Requirements, Military Characteristics	MIL-CHRST-REQT	159	Statement of the necessity of a military weapon system to meet military requirements.
Requirements, Mission	M-REQT	160	Statement of the necessity to meet the requirements of a mission.
Schedule	SCHD	161	A statement of projected operations or events.
Specification, System Type A	SPEC-TYPE-A	162	Statement of the technical and mission requirements for a system, allocation of requirements to functional areas, and definition of interfaces between functional areas.
Specification, Development, Type B1, Prime Item	SPEC-TYPE-B1	163	Statement of the requirements for a complex item such as an airframe, missile, launcher subsystem, fire control subsystem, or radar set.
Specification, Development, Type B2, Critical Item	SPEC-TYPE-B2	164	Statement of the requirement for an item below the level of complexity of a prime item but which is engineering critical or logistics critical.
Specification, Development, Type B3, Non-complex item	SPEC-TYPE-B3	165	Statement of the requirements for simply designed items.
Specification, Development, Type B4, Facility or Ship	SPEC-TYPE-B4	166	Statement of the requirements for each item which is both a fixed or floating installation and an integral part of a system or higher level item.
Specification, Development, Type B5, Computer Program	SPEC-TYPE-B5	167	Statement of requirements for the development computer programs, and description of requirements necessary to design the computer program in terms of performing criteria.
Specification, Product Type C1A, Prime Item Fabrication	SPEC-TYPE-C1A	168	Statement of requirements for procurement of prime items when a "form, fit, and function" description is acceptable.
Specification, Product Type C1B, Prime Item Fabrication	SPEC-TYPE-C1B	169	Statement of the requirements which are prepared for procurement of prime item when a detailed design disclosure package is available and it is desired to control the interchangeability of lower level components and parts and service maintenance and training are significant.
Specification, Product Type C2A, Critical Item Function	SPEC-TYPE-C2A	170	Statement of requirements for a critical item where performance characteristics are more important than part interchangeability or control over design details.
Specification, Product Type C2B, Critical Item Fabrication	SPEC-TYPE-C2B	171	Statement of requirements for a critical item where the detail design and fabrication is of greater importance than performance.

Page 7 of 19

DATA ELEMENT Document Name

DO-BL

II-21

MIL-STD-482A

1 April 1974

CM-17 (cont'd)

APPENDIX II. Standard data element and related features (cont'd)

DATA ITEM NAME	ABBREVIATION	CODE	EXPLANATION
Specification, Product Type C3, Non-complex Item Fabrication	SPEC-TYPE-C3	172	Statement of requirements which are produced as a product function specification.
Specification, Product Type C4, Inventory Item	SPEC-TYPE-C4	173	Statement of requirements which covers items available in the government inventory for use in or with a system.
Specification, Product Type C5, Computer Program	SPEC-TYPE-C5	174	Statement of requirements for the production of computer programs and their implementing media.
Specification, Process Type D	SPEC-TYPE-D	175	Statement of requirements for a service performed on a product or material.
Specification, Material Type E	SPEC-TYPE-E	176	Statement of requirements for a raw material which is used in the fabrication of a product.
Specification, Military	MIL-SPEC	177	Statement of requirements for military items or services.
Specification, Military Limited Coordination	MIL-LMTD- COORD-SPEC	178	Statement of requirements for items or services used by one department.
Specification, Federal	FED-SPEC	179	Statement of requirements for materials, products, or services for use by two or more federal agencies.
Specification, Federal Interim	FED-INTRM- SPEC	180	Statement of requirements for materials, products, or services for use by two or more federal agencies on an interim basis.
Specification, Commercial	COML-SPEC	181	Prepared for commercial needs and military needs with respect to content.
Specification, Industrial Association	INDL-ASSN- SPEC	182	Prepared by an industrial association and meets one or more military needs with respect to content.
Standard, Military	MIL-STD	183	Establishes military engineering and technical limitations and applications for items, materials, processes, method, designs, and engineering practices.
Standard, Military Limited Coordination	MIL-LMTD- COORD-STD	184	Statement of requirement for use by a single department or agency.
Standard, Federal	FED-STD	185	Defines terms, establishes codes, and documents practices, procedures, and items selected as standard for design, engineering, and supply operations by two or more federal agencies.
Standard, Federal Interim	FED-INTRM-STD	186	Defines terms, establishes codes, and documents practices, procedures, and items selected as standard for design engineering, and supply operations by a single federal agency.
Standard, Commercial Practice	COML-PRAC- STD	187	An existing commercial standard that may satisfy one or more military needs.
Standard, Military Multiple Sheets	MIL-MULT- SHTS-STD	188	Statement of requirements of physical items and design features of items.

Page 8 of 19

DATA ELEMENT Document Name

DO-BL

MIL-STD-482A
1 April 1974

CM-17 (cont'd)

APPENDIX II. *Standard data element and related features (cont'd)*

DATA ITEM NAME Standard, Industry	ABBREVIATION IND-STD	CODE 189	EXPLANATION
			A nationally recognized document issued to establish common technical requirements by a non-governmental, professional standardization, nonprofit organization.
Table	TBL	193	A condensed enumeration of particulars.
Yearbook	YRBK	195	A book issued on a specific yearly basis.
Almanac	ALMNC	196	A publication containing statistical, tabular, and general information.
Atlas	ATLAS	198	A publication containing a collection of maps or charts.
Bibliography	BI	199	A compilation and description of literature pertaining to a particular subject.
Book, Guide	GBK	201	A traveler's handbook of information.
Chart, Standard Nautical	STD-NAUT-CHT	204	A hydrographic or marine map depicting information in tabulated or methodical form.
Chart, Weather Station Locator	WEA-STA-LOC-CHT	205	A hydrographic or marine map depicting the radio frequencies of various weather stations.
Charts, General	GEN-CHT	206	Representations indicating groups of water related features to land masses.
Charts, Port	PRT-CHT	207	A representation indicating the nautical features of an area relating to specific reference points in a port. Includes water depths and related items such as church steeples or water towers and related elevations used by mariners in establishing a landfall.
Dictionary	DICT	210	An alphabetical reference book of words and their definitions.
Ephemeris	EPMRS	212	A tabular statement of the assigned places of a celestial body for regular intervals.
Gazetteer	GAZ	218	A geographic dictionary related to a specific regional specialization.
Index	IDX	220	A systematic table, list, or file for reference to topics, names or objects.
Map, Relief	RLF-MAP	221	A topographic depiction of land elevations.
Aerial Photograph	AERO-PHOTO	222	A photograph taken from an airborne vehicle.
Chart, Maintenance Allocation	MAINT-ALLOC-CHT	223	A listing of maintenance operations of an end item with indication of the lowest category of maintenance to perform the operations.
Directory	DIR	224	A categorized or alphabetical collection of directions, rules, ordinances or locations, names, addresses.

MIL-STD-482A

1 April 1974

CM-17 (cont'd)

APPENDIX II. Standard data element and related features (cont'd)

DATA ITEM NAME	ABBREVIATION	CODE	EXPLANATION
Flight Information Plan	FL-INFO-PLN	226	Textual or graphic information required to plan and conduct a flight.
List, Design Control	DSGN-CONT-	227	Tabulation of government design, control, and procured parts.
Repair Part	RPR		
Newsletter	NWLTR	228	A letter, sheet, or pamphlet issued periodically to convey news, advocate opinion, or report new facts or changes in procedure.
Notice, Component	CMPNT-OPNL-	229	A document reflecting the part number relationship of components that make up an end piece of equipment.
Operational Data	DATA-NOTE		
Ortho Pictomap	ORTHO-PCTMP	230	A map resulting from an aerial photograph that has been converted from a perspective product to one which is orthographic and further treated with the picotone process.
Photo Mosaic	PHOTO-MOS	231	An assembly of matched overlapping photographs forming continuous photographic representation of a portion of the earth's surface.
Plan, Human Engineering	HMN-ENGRG-PLN	233	The outline of the design consideration which assures optimum conformance to the man-machine processes.
Plan, Maintainability	MAINT-PLN	234	The description and analysis necessary to achieve the designated mean time to repair (MTTR).
Plan, Maintenance Support	MAINT-SPRT-PLN	235	A chart and narrative showing the time phases of the various elements required to support a new item or equipment.
Plan, Reliability	RELBL-PLN	236	The description and analysis necessary to achieve the designated mean time between failure (MTBF).
Plan, Test	TST-PLN	237	The description of the tests to be conducted to assure conformance to criteria delineated in a specification.
Program, Objective	OBJV-PRGM	238	Statement of the annual increments, balanced force levels, and programs necessary to progress in an orderly manner toward achieving military objectives.
Report, Electromagnetic Interference Test	EMI-TST-RPRT	240	A description of tests conducted to achieve design in the electromagnetic interference test plan.
Report, Equipment Compliance	EQUIP-COMPL-RPRT	241	An evaluation of the required performance of equipment.
Report, Human Engineering	HMN-ENGRG-RPRT	242	A description of engineering conducted for the design in the human engineering plan.
Report, Maintainability Demonstration	MAINT-DEMO-RPRT	243	The description of the engineering performed for the design cited in the maintainability test plan.

Page 10 of 19

DATA ELEMENT Document Name

DO-BL

MIL-STD-482A
1 April 1974

CM-17 (cont'd)

APPENDIX II. *Standard data element and related features (cont'd)*

DATA ITEM NAME	ABBREVIATION	CODE	EXPLANATION
Report, Monthly Status	MO-STAT-RPRT	244	A description of engineering conducted during a designated month.
Report, Reliability	RELBL-RPRT	245	A description of the tests conducted to achieve the design conducted in the reliability test plan.
Report, Test	TST-RPRT	246	The results of tests conducted in conformance with the approved test plan.
Research and Technology Resume	RES-TECH-RESM	247	A report to provide a compatible standardized medium of research exchange between NASA-DoD aeronautics and aeronautics coordinating board (AACB).
Record, Maintenance Historical	MAIN-HIST-RCD	248	A record of maintenance of modification on equipment.
Record, Selected Item Configuration	SEL-ITM-CONFIG-RCD	249	A list of serial numbers for delivered configuration items.
Ship Improvement Guide (SIG) Card	SIG-CARD	251	Detailed information statement of those uncompleted projects and new improvement items affecting military characteristics of particular classes of vessels.
Specification, Test	TST-SPEC	252	Statement of test requirements which must be met by items of equipment, parts, or material.
Telegram	TLGM	253	A message transmitted by coded signals between points in a communication system.
Digital Map	DGTL-MAP	257	A map, chart, or aerial photograph for which the information shown has been digitized.
Map Legend	MAP-LGD	258	Illustration and identification of topographic symbols and geodetic information used to depict prominent features on a map.
Radar Map	RDR-MAP	259	A map produced through the application of radar techniques.
Book, Text	TXT-BK	260	A book with a specific subject.
Drawing, Military Standard	MIL-STD-DWG	261	A drawing for a standard item which is mandatory for use in the military departments.
Plan, Control Electromagnetic Interference	CONT-EM-INTRF-PLN	262	The design criteria to achieve electromagnetic compatibility.
Plan, Electromagnetic Interference Tests	EM-INTRF-TST-PLN	263	The outline of test considerations to which material is subjected.
Exploded Diagram	EXPLD-DIAG	264	A sketch of an item or an assembly in which items are moved away from mating items yet the relative positions of all items are retained.
Drawing, Printed Wiring Master Pattern	PW-MAS-PAT-DWG	265	A precise scale pattern which is used to produce the printed circuit within the accuracy specified in the master drawing.

MIL-STD-482A

1 April 1974

CM-17 (cont'd)

APPENDIX II. *Standard data element and related features (cont'd)*

DATA ITEM NAME	ABBREVIATION	CODE	EXPLANATION
List, Packing	PKG-LIST	266	A presentation of the contents of a container, usually attached to the item.
Plan, Master	MAS-PLN	267	A formal plan which documents the integrated and interrelated tasks, time-phased and costed, required of and by participating organizations, necessary to successful accomplishment of objectives. The plan assigns tasks to be performed, sets task completion schedules, states activity work assignments, defines task interfaces, states objectives to be achieved, specifies reports to be prepared, and delineates resources required and available.
Drawing, Altered Item	DWG-ALT-ITEM	268	Complete details of an alteration to any standard or design or vendor activity item.
Sheets, Packaging Data	SHTS-PKG-DATA	269	Detailed instructions of how to package.
Federal Item Identification Guide	FIIG	270	A self contained document for the collection, coding, transmittal, and retrieval of item characteristics and related supply management data for a item of supply for logistical use.
Instruction, DOD	INSTR-DOD	DDI	Official publication which conveys knowledge, direction, or order from the Department of Defense.
Drawing, Diagram Logic	DIAG-LOGIC-DWG	271	Graphic illustration of the sequence and function of logic circuitry.
Drawing, Monodetail	DWG-MONO	272	Diagram which delineates a single part.
Drawing, Multidetail	DWG-MULT	273	Diagram which delineates two or more uniquely identified parts on the same drawing.
Drawing Detail Assembly	DWG-DETAIL-ASMBLY	274	Diagram which depicts an assembly view or on detail views.
Drawing Photograph Assembly	DWG-PHOTO-ASMBLY	275	Diagram prepared by photographing the assembled item and delineating the appropriate item number callouts.
Drawing, Selected Item	DWG-SEL-ITEM	276	Diagram defining an existing standard or design or vendor activity item with further required selection or restriction of the item for fit, tolerance, performance, or reliability.
Drawing, Cable Assembly	DWG-CABLE-ASSMBLY	277	Statement of power, signal, radio frequency, or audio frequency cables normally used between equipments, units, inter-racks, etc.
Drawing, Numerical Control	DWG-N-C	278	Statement of complete physical and functional engineering and product requirements of an item to facilitate production by tape control means.

Page 12 of 19

DATA ELEMENT Document Name

DO-BL

II-26

MIL-STD-482A
1 April 1974

CM-17 (cont'd)

APPENDIX II. *Standard data element and related features (cont'd)*

DATA ITEM NAME	ABBREVIATION	CODE	EXPLANATION
Drawing, Flow Diagram, Computer	DWG-FL-DIAG-COMPTR	279	Graphic description of the processing to be performed by a computer program, sequence of operations and decision points.
Specification, Computer Software	SPEC-CMPTR-SWR	280	Statement of the requirements for the development of a program language.
Program, Computer Source	PRGM-CMPTR-SCE	281	Literal representation of a computer program.
Program, Computer Object	PRGM-CMPTR-OBJ	282	Literal representation of the machine language instructions produced through the compilation process.
List, Computer Program Compilation	LIST-CMPTR-PRGM-CMPLT	283	Literal lists of source language statements, object modules, tables of names, etc., produced during the compilation process.
Program, Computer	PRGM-CMPTR	284	Detailed technical description of a computer program contains allocation of functions to sub-programs routines, traceability to requirements, detailed flow charts, timing and sequencing characteristics, description of memory allocation, and the why or particular approaches in sub-program organization.
Program, Computer Object	PRGM-CMPTR-OBJ	282	Literal representation of the machine language instructions produced through the compilation process.
List, Computer Program	LIST-CMPTR-PRGM-CMPLT	283	Literal lists of source language statements, object modules, tables of names, etc., produced during the compilation process.
Program, Computer	PRGM-CMPTR	284	Detailed technical description of a computer program contains allocation of functions to sub-programs routines, traceability to requirements, detailed flow charts, timing and sequencing characteristics, description of memory allocation, and the why or particular approaches in sub-program organization.
Specification, Computer Program requirement	SPEC-CMPTR-PRGM-REQT	285	Performance/design requirements for development of a program. Similar to a program development specification but not in specification format.
Table, Decision	T-D	286	Tabular description of the processing to be performed by a computer program, dependencies of operations, and decision criteria.
Support Manual	SPRT-MNL	287	Consists of a support computer program and equipment description.
Annex	ANX	288	An added stipulation or statement.
Appendix	APPX	289	A section added at the end of a document.
Exhibit	EXH	291	A display, exposition, or illustration (pictorial).

Page 13 of 19

DATA ELEMENT Document Name

DO-BL

II-27

MIL-STD-482A

1 April 1974

CM-17 (cont'd)

APPENDIX II. Standard data element and related features (cont'd)

DATA ITEM NAME	ABBREVIATION	CODE	EXPLANATION
Ships Armament Inventory List	SAIL	292	A full description of weapons and equipment.
Computer Representation	CMPTR-REP	900	A portrayal of selective information. May be a computer produced plot.
Data Items Listed In Alphabetical Sequence			
Aerial Photograph		222	
Almanac		196	
Annex		288	
Appendix		289	
Atlas		198	
Bibliography		199	
Book, Guide		201	
Book, Text		260	
Bulletin, Aircraft Engine		012	
Bulletin, ANA		014	
Bulletin, Electronic Information		011	
Bulletin, Supply		013	
Bulletin, Technical		010	
Catalog		007	
Chart, Maintenance Allocation		223	
Chart, Standard Nautical		204	
Chart, Weather Station Locator		205	
Charts, General		206	
Charts, Port		207	
Computer Representation		900	
Dictionary		210	
Digital Map		257	
Directive, Configuration Control Board		018	
Directive, DOD		017	
Directory		224	
Drawing, Altered Item		268	
Drawing, Arrangement		020	
Drawing, Assembly		021	
Drawing, Book Form		023	
Drawing, Cable Assembly		277	
Drawing, Construction		024	
Drawing, Correlation		028	
Drawing, Detail		029	
Drawing, Detail Assembly		274	
Drawing, Diagram, Electrical/Electronic		030	
Drawing, Diagram, Electrical/Electronic Connection Wiring		036	
Drawing, Diagram, Electrical/Electronic Interconnection		038	

Page 14 of 19

DATA ELEMENT Document Name

DO-BL

MIL-STD-482A
1 April 1974

CM-17 (cont'd)

APPENDIX II. *Standard data element and related features (cont'd)*

DATA ITEM NAME	ABBREVIATION	CODE	EXPLANATION
Drawing, Diagram, Electrical/Electronic Schematic or Elementary		032	
Drawing, Diagram Logic		271	
Drawing, Diagram, Mechanical		040	
Drawing, Diagram, Mechanical, Schematic		041	
Drawing, Diagram, Piping		042	
Drawing, Elevation		043	
Drawing, Envelope		044	
Drawing, Erection		045	
Drawing, Flow Diagrams Computer		279	
Drawing, Inseparable Assembly		046	
Drawing, Installation		047	
Drawing, Installation Control		048	
Drawing, Interface Control		027	
Drawing, Kit		049	
Drawing, Matched Parts		051	
Drawing, Military Standard		261	
Drawing, Monodetail		272	
Drawing, Multidetail		273	
Drawing, Numerical Control		278	
Drawing, Optical Elements		052	
Drawing, Optical Systems		053	
Drawing, Photograph Assembly		275	
Drawing, Plan		054	
Drawing, Plot (PLAT) Plan		055	
Drawing, Printed Wiring Master		059	
Drawing, Printed Wiring Master Pattern		265	
Drawing, Selected Item		276	
Drawing, Source Control		025	
Drawing, Specification Control		026	
Drawing, Tabulated		056	
Drawing, Tube Bend		057	
Drawing, Undimensioned		058	
Drawing, Vicinity Plan		060	
Drawing, Wiring Harness		022	
Encyclopedia		004	
Ephemeris		212	
Exhibit		291	
Exploded Diagram		264	
Flight Information Plan		226	
Gazetteer		218	
Glossary		005	
Guide, Federal Item Identification		270	
Handbook		001	
Handbook, Federal		002	

Page 15 of 19

DATA ELEMENT Document Name

DO-BL

II-29

MIL-STD-482A
1 April 1974

CM-17 (cont'd)

APPENDIX II. *Standard data element and related features (cont'd)*

DATA ITEM NAME	ABBREVIATION	CODE	EXPLANATION
Handbook, Military		003	
Illustrated Parts Breakdown		070	
Index		220	
Instructions		071	
Instruction, DOD		DD1	
Letters		072	
List, Allowance Equipage		078	
List, Allowance Parts		073	
List, Computer Program		283	
Compilation			
List, Consolidated Ships		079	
Allowance			
List, Contents		084	
List, Data		DLA	
List, Design Control		227	
Repair Part			
List, Equipment		087	
List, Gage		GLA	
List, Index		ILA	
List, Index, Equipment and		ELC	
Numbers			
List, Index of Inspection		ELD	
Equipment			
List, Index of Inspection		ELE	
Numbers			
List, Initial Outfitting		076	
List, Initial Supply		075	
Support			
List, Inspection Equipment		ELA	
List, Inspection Equipment		ELB	
Documents			
List, Listing of Parts		LLA	
List, Ordnance Equipment		077	
List, Packing		266	
List, Parts		PLA	
List, Provisioning Parts		074	
List, Qualified Products		080	
List, Specification		082	
List, Supplementary Quality		088	
Assurance			
List, Wiring		WLA	
Manual, Administrative		105	
Manual, Field		100	
Manual, Operating		098	
Manual, Service		102	
Manual, Standardization		104	
Manual, Supply		101	
Manual, Support		287	
Manual, Technical		099	
Manual, Training		097	
Map Legend		258	
Map, Relief		221	
Maps, General		107	
Maps, Port		108	

Page 16 of 19

DATA ELEMENT Document Name

DO-BL

MIL-STD-482A
1 April 1974

CM-17 (cont'd)

APPENDIX II. *Standard data element and related features (cont'd)*

DATA ITEM NAME	ABBREVIATION	CODE	EXPLANATION
Memorandum		110	
Newsletter		228	
Newspaper		114	
Notice, Cancellation		NIJ	
Notice, Component		229	
Operational Data			
Notice, Design Change		N1E	
Notice, Directive Change		N1F	
Notice, Drawing Change		N1A	
Notice, Instruction Change		N1G	
Notice of Revision		N1C	
Notice, Specification Change		N1B	
Notice, Technical		N1K	
Notice, Waiver/Deviation		N1H	
Order, Administrative		127	
Order, Aircraft		133	
Order, Contract Change		126	
Order, Engineering		136	
Order, General		135	
Order, Lubrication		134	
Order, Military		128	
Order, Modification Work		130	
Order, Procedural		129	
Order, Technical		132	
Order, Time Compliance		131	
Technical			
Ortho Pictomap		230	
Pamphlet		139	
Periodical		140	
Photomap		141	
Photo Mosaic		231	
Pictomap		143	
Plan, Configuration		146	
Management			
Plan, Control, Electro-		262	
magnetic Interference			
Plan, Electromagnetic		263	
Interference Tests			
Plan, Human Engineering		233	
Plan, Integrated Logistic		145	
Support			
Plan, Maintainability		234	
Plan, Maintenance Support		235	
Plan, Master		267	
Plan, Reliability		236	
Plan, Technical Development		144	
Plan, Test		237	
Plans, City		147	
Program, Computer		284	
Program, Computer Object		282	
Program, Computer Source		281	
Program Objective		238	

Page 17 of 19

DATA ELEMENT Document Name

DO-BL

II-31

MIL-STD-482A

1 April 1974

CM-17 (cont'd)

APPENDIX II. Standard data element and related features (cont'd)

DATA ITEM NAME	ABBREVIATION	CODE	EXPLANATION
Proposals		148	
Proposals, Engineering		151	
Change, Formal (F)			
Proposals, Engineering		150	
Change, Preliminary (P)			
Radar Map		259	
Record, Maintenance		248	
Historical			
Record, Selected Item		249	
Configuration			
Regulation		153	
Report		154	
Report, Electromagnetic		240	
Interference Test			
Report, Equipment Compliance		241	
Report, Human Engineering		242	
Report, Maintainability		243	
Demonstration			
Report, Monthly Status		244	
Report, Reliability		245	
Report, Technical		155	
Report, Test		246	
Report, Trip		156	
Request for Waiver/Deviation		069	
Requirements, General		157	
Operational			
Requirements, Military		159	
Characteristics			
Requirements, Mission		160	
Requirements, Specific		158	
Operational			
Research and Technology		247	
Resume			
Schedule		161	
<i>Sheets, Packaging Data</i>		269	
Ship Improvement Guide		251	
(SIG) Card			
Ships Armament Inventory		292	
List			
<i>Specification, Commercial</i>		181	
<i>Specification, Computer</i>		285	
Program Requirement			
<i>Specification, Computer</i>		280	
Software			
<i>Specification, Development,</i>		163	
Type B1 Prime Item			
<i>Specification, Development,</i>		164	
Type B2 Critical Item			
<i>Specification, Development,</i>		165	
Type B3 Non-Complex Item			
<i>Specification, Development,</i>		166	
Type B4 Facility or Ship			

Page 18 of 19

DATA ELEMENT Document Name

DO-BL

MIL-STD-482A

1 April 1974

CM-17 (cont'd)

APPENDIX II. *Standard data element and related features (cont'd)*

DATA ITEM NAME	ABBREVIATION	CODE	EXPLANATION
Specification, Development, Type 5, Computer Program		167	
Specification, Federal		179	
Specification, Federal Interim		180	
Specification, Industrial Association		182	
Specification, Material, Type E		176	
Specification, Military		177	
Specification, Military Limited Coordination		178	
Specification, Process, Type D		175	
Specification, Product, Type C1A, Prime Item Function		168	
Specification, Product, Type C1B, Prime Item Fabrication		169	
Specification, Product, Type C2A, Critical Item Function		170	
Specification, Product, Type C2B, Critical Item Fabrication		171	
Specification, Product, Type C3, Non-Complex Item Fabrication		172	
Specification, Product, Type C4, Inventory Item		173	
Specification, Product, Type C5, Computer Program		174	
Specification, System Type A		162	
Specification, Test		252	
Standard, Commercial Practice		187	
Standard, Federal		185	
Standard, Federal Interim		186	
Standard, Industrial		189	
Standard, Military		183	
Standard, Military Limited Coordination		184	
Standard, Military Multiple Sheets		188	
Table		193	
Table, Decision		286	
Telegram		253	
Yearbook		195	

Page 19 of 19

DATA ELEMENT Document Name

DO-BL

II-33

MIL-STD-482A
1 April 1974

CM-18

APPENDIX II. Standard data element and related features (cont'd)

EFFECTIVE DATE 68-05-15		ARA NAVY	REFERENCE NUMBER IT-EP
DATA ELEMENT Item Life Cycle Event			ABBREVIATION ITEM-LIFE-CYC-EV
DEFINITION One of the phases or events in the cycle of an item.			
DATA USE IDENTIFIER NAME		ABBREVIATION	EXPLANATION
AA Item Life Cycle Event		ITEM-LIFE-CYC-EV	See definition.
AB Engineering Change Implementation		EC-IMPL	A single change may be incorporated in production or by retrofit and, therefore, normally change incorporation must be related to configuration element serial effectivity. Performance characteristics are subject to change at any phase of the life cycle.
DATA CODE CHARACTERISTICS		LENGTH 01	STRUCTURE A
DATA ITEM NAME	ABBREVIATION	CODE	EXPLANATION
Advanced Development	None	A	Includes all projects which have moved into the development of hardware for experimental or operational test.
Combined	None	C	Combination of production and retrofit when serial number identification is not available.
Concept Formulation	None	F	The activities preceding a decision to carry out engineering development. (These activities include accomplishment of comprehensive system studies and experimental hardware efforts under exploratory and advanced development, and are prerequisite to a decision to carry out engineering development.)
Contract Definition	None	K	Verification or accomplishment of preliminary design and engineering and performance of firm contract and management planning.
Engineering Development	None	E	Development programs being engineered for service use which have not yet been approved for procurement or operation.
Exploratory Development	None	D	All effort directed toward the solution of specific military problems, short of major development projects.
Operational System Developments	None	O	Includes research and development effort directed toward development, engineering and test of systems, support programs, vehicles and weapons that have been approved for production and service employment.
Production	None	P	Manufacturing or fabrication.
Retrofit	None	R	Identification of changes to be incorporated after initial manufacture and formal acceptance (DD Form 250) is completed.

MIL-STD-482A
1 April 1974

CM-19

APPENDIX II. *Standard data element and related features (cont'd)*

EFFECTIVE DATE	68-05-15	ARA	NAVY	REFERENCE NUMBER	EN-JO
DATA ELEMENT	Engineering Change Incorporation Level	ABBREVIATION	EC-INC-LEVEL		
DEFINITION	The organizational level at which installation of the engineering change is recommended based upon potential availability of resources.				
DATA USE IDENTIFIER NAME	AA Engineering Change Incorporation Level	ABBREVIATION	EC-INC-LEVEL	EXPLANATION	See definition.
DATA CODE CHARACTERISTICS		LENGTH	01	STRUCTURE	A
DATA ITEM NAME	ABBREVIATION	CODE	EXPLANATION		
Contractor		C	Manufacturer will install in organic facilities or by field team.		
Depot		D	Fixed shop, shipyard or shore based overhaul facilities and field teams from these facilities will install.		
Intermediate		I	Normally fixed or mobile shops, tenders, or shore based intermediate level repair facilities or field teams from the facilities will install.		
User (or Organizational) Level		U	Normally using organization will install.		

Page 1 of 1

DATA ELEMENT Engineering Change Incorporation Level

EN-JO

11-35

MIL-STD-482A
1 April 1974

CM-20

APPENDIX II. *Standard data element and related features (cont'd)*

EFFECTIVE DATE	69-07-01	ARA	NAVY	REFERENCE NUMBER	EN-JU
DATA ELEMENT	Engineering Change Justification			ABBREVIATION	ENG-CHGE-JUST
DEFINITION	The reason an engineering change is needed.				
DATA USE IDENTIFIER NAME	ABBREVIATION			EXPLANATION	
AA Engineering Change Justification	ENG-CHGE-JUST			See definition.	
DATA CODE CHARACTERISTICS	LENGTH			STRUCTURE	
	01			A	
DATA ITEM NAME	ABBREVIATION	CODE	EXPLANATION		
Compatibility	None	C	To correct a deficiency of the following characteristics: (a) The need for the change has been discovered during the system or item functional checks or during installation and checkout and is necessary to make the system or item work, and (b) The originator in assigning the compatibility code is declaring that the effort required to accomplish the change is considered to be within the scope of his existing contract, and (c) Contractual coverage completing the formal documentation of the engineering change will not reflect an increase in contract price.		
Correction of Deficiency	None	D	To eliminate a deficiency, unless a more descriptive separate code applies. Such separate codes are used to identify deficiencies of the nature of safety, interface, or compatibility.		
Operational or Logistic Support	None	O	To make a significant effectiveness change in operational or logistics support requirements.		
Production Stoppage	None	P	To prevent slippage in an approved production schedule. This code applies when production to the current configuration identification either is impracticable or cannot be accomplished without delay.		
Cost Reduction	None	R	To provide a net total cost savings to the government, including not only all effects on cost or price under the immediate contract but also the costs resulting from necessary associated changes in delivered items, logistic support and items produced by others.		
Safety	None	S	To correct a deficiency required primarily to eliminate a hazardous condition.		

Page 1 of 2

DATA ELEMENT Engineering Change Justification

EN-JU

MIL-STD-482A
1 April 1974

CM-20 (cont'd)

APPENDIX II. *Standard data element and related features (cont'd)*

DATA ITEM NAME	ABBREVIATION	CODE	EXPLANATION
Value Engineering	None	V	To effect a net life cycle cost reduction and to conform to the value engineering clause of the contract.
Interface	None	B	To correct a deficiency which will eliminate interference or incompatibility at the interface between configuration items.
Record Only	None	A	Because of impact on the configuration item or on logistics support, a Class 1 change, but owing to contracting method (e.g., total package procurement) is within scope of contract and should not be processed for formal change to contract.

Page 2 of 2

MIL-STD-482A
1 April 1974

CM-21

APPENDIX II. Standard data element and related features (cont'd)

EFFECTIVE DATE	68-05-15	ARA	NAVY	REFERENCE NUMBER	AC-TJ
DATA ELEMENT	Action Priority			ABBREVIATION	ACT-PRIOR
DEFINITION	Performance precedence based on competing alternatives.				
DATA USE IDENTIFIER NAME		ABBREVIATION		EXPLANATION	
AA Action Priority		ACT-PRIOR		See definition.	
AB Engineering Change Priority		EC-PRIOR		Precedence of engineering change processing, approval, procurement and installation.	
DATA CODE CHARACTERISTICS		LENGTH	01	STRUCTURE	A
DATA ITEM NAME	ABBREVIATION	CODE		EXPLANATION	
Emergency	None	E		To preclude serious compromise to national security, serious injury to personnel, or costly damage to equipments.	
Routine	None	R		Other than emergency or urgent.	
Urgent	None	U		Must be acted upon expeditiously to minimize undesirable impact upon the government.	

Page 1 of 1

DATA ELEMENT Action Priority

AC-TJ

II-38

MIL-STD-482A
1 April 1974

CM-22

APPENDIX II. *Interim data chain and related features (cont'd)*

EFFECTIVE DATE	ARA NAVY	REFERENCE NUMBER
DATA CHAIN	Engineering Change Proposal Identification	ABBREVIATION ECP-IDENT
DEFINITION	A data chain, that identifies an individual package of data proposing a change from an established baseline, composed of data elements: Organizational Identification, Document Name, System, Document Number, Document Change Type, Document Change Level(s), Document Change Type, and Document Change Level(s).	
DATA USE IDENTIFIER NAME	ABBREVIATION	EXPLANATION
AA Engineering Change Proposal Identification	ECP-IDENT	See definition.
DATA CODE CHARACTERISTICS	LENGTH 40	STRUCTURE AN
DATA ITEM NAME	ABBREVIATION	CODE
ECP Nomenclature (60 AN Maximum)	None	Literal
		EXPLANATION
		Title of engineering change proposal. The chain consists of the following data elements: 6 (OI) + 3 Document Name + 10 (System) + 15 (Document Number) + 1 (Document Change Type) + 2 (Document Change Level) + 1 (Document Change Type) + 2 (Document Change Level).

Page 1 of 1

DATA CHAIN Engineering Change Proposal Identification

II-39

MIL-STD-482A
1 April 1974

CM-23

APPENDIX II. *Standard data chain and related features (cont'd)*

EFFECTIVE DATE 67-05-19 ARA DSA REFERENCE NUMBER FE-IA

DATA CHAIN Federal Stock Number ABBREVIATION FSN

DEFINITION The identification of each item of supply within the Federal Catalog System.

DATA USE IDENTIFIER NAME	ABBREVIATION	EXPLANATION
AA Federal Stock Number	FSN	See definition.

DATA CODE CHARACTERISTICS	LENGTH 11	STRUCTURE N
---------------------------	-----------	-------------

REFERENCE NO.	DATA ELEMENT NAME	STRUCTURE
FE-KK	Federal Supply Group	NN
FE-KA	Federal Supply Class	NN
FE-FA	Federal Item Identification Number	NNNNNNN

Page 1 of 1

DATA CHAIN Federal Stock Number

FE-IA

MIL-STD-482A
1 April 1974

CM-24

APPENDIX II. *Standard data chain and related features (cont'd)*

EFFECTIVE DATE	67-05-19	ARA DSA	REFERENCE NUMBER	FE-KC
DATA CHAIN	Federal Supply Classification		ABBREVIATION	FSC
DEFINITION	A system of arranging the universe of items of supply into broad commodity groups and classes.			
DATA USE IDENTIFIER NAME		ABBREVIATION	EXPLANATION	
AA Federal Supply Classification		FSC	See definition.	
DATA CODE CHARACTERISTICS		LENGTH	04	STRUCTURE
				N
REFERENCE NO.	DATA ELEMENT NAME	STRUCTURE		
FE-KK	Federal Supply Group	NN		
FE-KA	Federal Supply Class	NN		

Page 1 of 1

DATA CHAIN Federal Supply Classification

FE-KC

II-41

MIL-STD-482A
1 April 1974

CM-25

APPENDIX II. *Standard data element and related features (cont'd)*

EFFECTIVE DATE	67-05-19	ARA DSA	REFERENCE NUMBER	FE-KK
DATA ELEMENT	Federal Supply Group		ABBREVIATION	FED-SUP-GP
DEFINITION	The aggregation of several Federal Supply Classes into a meaningful grouping for uniform management purposes. (See para. 331 of Federal Manual for Supply Cataloging M 1-3 dated September 1964.)			
DATA USE IDENTIFIER NAME		ABBREVIATION	EXPLANATION	
AA Federal Supply Group		FED-SUP-GP	See definition.	
RELATED DATA CHAINS				
FE-IA Federal Stock Number				
FE-KC Federal Supply Classification				
DATA CODE CHARACTERISTICS		LENGTH	02	STRUCTURE N
DATA ITEM NAME	ABBREVIATION	CODE	EXPLANATION	
Literal	None	01-99	See Cataloging Handbook H 2-1	

Page 1 of 1

DATA ELEMENT Federal Supply Group

FE-KK

MIL-STD-482A
1 April 1974

CM-26

APPENDIX II. *Standard data element and related features (cont'd)*

EFFECTIVE DATE	67-05-19	ARA DSA	REFERENCE NUMBER	FE-FA
DATA ELEMENT	Federal Item Identification Number		ABBREVIATION	FIIN
DEFINITION	A discrete number sequentially assigned to each approved item of supply. (See Federal Manual for Supply Cataloging M 1-2 dated January 1965.)			
DATA USE IDENTIFIER NAME		ABBREVIATION	EXPLANATION	
AA Federal Item Identification Number		FIIN	See definition.	
AB Federal Item Identification Number - Current		FIIN-CURR		
AC Federal Item Identification Number - Deleted		FIIN-DELE		
AD Federal Item Identification Number - Substitute		FIIN-SUB		
AE Federal Item Identification Number - Former		FIIN-FRMR		
RELATED DATA CHAINS				
FE-IA Federal Stock Number				
DATA CODE CHARACTERISTICS		LENGTH	07	STRUCTURE
				N
DATA ITEM NAME	ABBREVIATION	CODE	EXPLANATION	
Literal	None		See complete range of Federal Supply Catalogs.	

Page 1 of 1

DATA ELEMENT Federal Item Identification Number

FE-FA

II-43

MIL-STD-482A
1 April 1974

CM-27

APPENDIX II. *Interim data element and related features (cont'd)*

EFFECTIVE DATE	ARA NAVY	REFERENCE NUMBER
DATA ELEMENT Functional Application		ABBREVIATION FA
DEFINITION	The identifier of the functional location of an item or assembly within a system, subsystem, or other assembly which includes nomenclature and code.	
DATA USE IDENTIFIER NAME	ABBREVIATION	EXPLANATION
AA Functional Application	FA	See definition.
DATA CODE CHARACTERISTICS	LENGTH 07	STRUCTURE AN
DATA ITEM NAME	ABBREVIATION	CODE
Literal	None	EXPLANATION This is the USAF "Work Unit Code" USN Air "Work Unit Code" and USN Ships "Equipment Identification Code (EIC)." The current work unit code for Air Force is 5 characters and 7 characters for Naval Air items. The EIC is 7 AN characters. References: MIL-STD-780D(AS), 1 July 1972 USAF TCTO Index 005-1

Page 1 of 1

DATA ELEMENT Functional Application

II-44

MIL-STD-482A
1 April 1974

CM-28

APPENDIX II. *Interim data chain and related features (cont'd)*

EFFECTIVE DATE	ARA DSA	REFERENCE NUMBER
DATA CHAIN Item Documentation Identification		ABBREVIATION ITEM-DOC-IDENT
DEFINITION	The identification of the documentation of the design of an individual part, assembly or item.	
DATA USE IDENTIFIER NAME	ABBREVIATION	EXPLANATION
AA Item Documentation Identification	ITEM-DOC-IDENT	See definition.
AB Drawing Identification	DRAWING-IDENT	The identification (name and number) for an individual drawing, which is a graphic representation of the part.
AC Specification Identification	SPEC-IDENT	The identification (name and number) for a specification.
DATA CODE CHARACTERISTICS	LENGTH 75	STRUCTURE AN
DATA ITEM NAME	ABBREVIATION	CODE
Item Documentation Identification	None	15 DOCUMENT NUMBER 60 DOCUMENT TITLE
		EXPLANATION
		A descriptive title of the item including identifying mark (MK) and/or model (MOD) designations. Where Federal Nomenclature has been assigned the title will be that Federal Nomenclature.
		Reference: Federal Manual for Supply Cataloging H6-1.

Page 1 of 1

DATA CHAIN Item Documentation Identification

II-45

MIL-STD-482A
1 April 1974

CM-30

APPENDIX II. *Standard data element and related features (cont'd)*

EFFECTIVE DATE	68-09-27	ARA	NAVY	REFERENCE NUMBER	LO-TN
DATA ELEMENT	Lot Serial Number			ABBREVIATION	LT-SER-NBR
DEFINITION	The identifying notation of an aggregation of units of product produced under a constant system of causes - i.e., an aggregation of pieces which are essentially alike, always used with another data element.				
DATA USE IDENTIFIER NAME		ABBREVIATION		EXPLANATION	
AA Lot Serial Number		LT-SER-NBR		See definition.	
DATA CODE CHARACTERISTICS		LENGTH	15	STRUCTURE	AN
DATA ITEM NAME		ABBREVIATION	CODE	EXPLANATION	
Literal		None		Must be related to another data element (i.e., CII, part number or noun nomenclature.) When used in relationship with configuration management, the term "lot" will be correlated with part number, drawing number, specification number or related identification.	

Page 1 of 1

DATA ELEMENT Lot Serial Number

LO-TN

MIL-STD-482A
1 April 1974

CM-31

APPENDIX II. Standard data element and related features (cont'd)

EFFECTIVE DATE 69-09-30	ARA LOGDESMO	REFERENCE NUMBER HO-VR
DATA ELEMENT Hours, Number of		ABBREVIATION HOURS-NBR
DEFINITION A period of time expressed in quantity of hours.		
DATA USE IDENTIFIER NAME	ABBREVIATION	EXPLANATION
AA Hours, Number of	HOURS-NBR	See definition.
AB Man-Hours, Number of	MAN-HOURS-NBR	Quantity of hours expressed in a standard number of working minutes representing the work of one man in one hour.
AC Strategic Warning Hours, Number of	STRAT-WNG-HOURS-NBR	Number of hours required, after receipt of notification that enemy initiated hostilities may be imminent, for troops to occupy pre-planned dispersal areas.
EXPRESSION	VARIABLE LENGTH MAXIMUM 03	STRUCTURE N
Note - Expressed in whole numbers and with no decimal fractions.		

Page 1 of 1

DATA ELEMENT Hours, Number of

HO-VR

II-47

MIL-STD-482A
1 April 1974

CM-33

APPENDIX II. *Interim data element and related features (cont'd)*

EFFECTIVE DATE	ARA NAVY	REFERENCE NUMBER
DATA ELEMENT Model Designator		ABBREVIATION MOD-DESIG
DEFINITION Within Type, identification of equipment having essentially identical performance characteristics.		
DATA USE IDENTIFIER NAME	ABBREVIATION	EXPLANATION
AA Model Designator	MOD-DESIG	See definition.
DATA CODE CHARACTERISTICS	LENGTH 10	STRUCTURE AN
DATA ITEM NAME	ABBREVIATION	CODE
Literal	None	See data chain "Type, Model, Series" for application.

Page 1 of 1

DATA ELEMENT Model Designator

II-49

MIL-STD-482A
1 April 1974

CM-34

APPENDIX II. *Interim data chain and related features (cont'd)*

EFFECTIVE DATE		ARA NAVY	REFERENCE NUMBER
DATA CHAIN Modification Constraint Identification			ABBREVIATION MOD-CONST-IDENT
DEFINITION		The relationship between a given change and specific other changes, including both the identification of the other changes, and the nature of the relationship.	
		The chain consists of Chronological Sequence, Document Name, and ECP Identification, or Modification Work Order Number.	
DATA USE IDENTIFIER NAME		ABBREVIATION	EXPLANATION
AA Modification Constraint Identification		MOD-CONST-IDENT	See definition.
DATA CODE CHARACTERISTICS		LENGTH 44	STRUCTURE AN
DATA ITEM NAME		ABBREVIATION	EXPLANATION
Literal		None	The chain, when constructed, must have Document Name in agreement with the last element of the chain which will be either Engineering Change Proposal Identification or Modification Work Order Number. The chain consists of: 1 Chronological Sequence, 3 Document Name, 40 ECP Identification or 17 Modification Work Order Number.

Page 1 of 1

DATA CHAIN Modification Constraint Identification

MIL-STD-482A
1 April 1974

CM-35

APPENDIX II. Interim data element and related features (cont'd)

EFFECTIVE DATE	ARA NAVY	REFERENCE NUMBER
DATA ELEMENT Modification Kit Number		ABBREVIATION MOD-KIT-NO
DEFINITION The unique identifier of a retrofit kit.		
DATA USE IDENTIFIER NAME AA Modification Kit Number	ABBREVIATION MOD-KIT-NO	EXPLANATION See definition.
DATA CODE CHARACTERISTICS	LENGTH 15	STRUCTURE AN
DATA ITEM NAME Literal	ABBREVIATION None	CODE
		EXPLANATION

EXAMPLE:

1560	K	01	12345	A	BC	
						AMA Responsible for the item
						Kit Letter Designator - Modification or kit configuration to match serial numbers of aircraft.
						Identification number
						TCTO number
						Kit for modification
						Federal Supply Classification

DATA ELEMENT Modification Kit Number

MIL-STD-482A
1 April 1974

CM-36

APPENDIX II. Standard data element and related features (cont'd)

EFFECTIVE DATE	66-10-27	ARA	OASD(C)	REFERENCE NUMBER	MO-NA
DATA ELEMENT	Month			ABBREVIATION	MO
DEFINITION	One of the twelve parts into which a year is divided as defined by the Gregorian calendar.				
DATA USE IDENTIFIER NAME		ABBREVIATION		EXPLANATION	
AA Month		MO		See definition.	
AB Month Flight Requirements Not Met		MO-FLT-RQRMT-			
		NOT-MET			
AC Month Start		MO-START		Month in which an entry or transaction starts.	
AD Month of Posting		MO-POSTING		Month in which an entry or transaction is entered on a file.	

RELATED DATA CHAINS
CO-GT Complete Calendar Date
CO-GX Complete Date, Cartographic Event
DA-FA Date
YE-NH Year and Month

DATA CODE CHARACTERISTICS		LENGTH	02	STRUCTURE	N
DATA ITEM NAME	ABBREVIATION	CODE		EXPLANATION	
January	JAN	01			
February	FEB	02			
March	MAR	03			
April	APR	04			
May	MAY	05			
June	JUN	06			
July	JUL	07			
August	AUG	08			
September	SEP	09			
October	OCT	10			
November	NOV	11			
December	DEC	12			

Page 1 of 1

DATA ELEMENT Month

MO-NA

II-52

MIL-STD-482A
1 April 1974

CM-37

APPENDIX II. *Interim data chain and related features (cont'd)*

EFFECTIVE DATE	71-03-31	ARA	OASD(C)	REFERENCE NUMBER	OR-GD
DATA CHAIN	Organization Identification			ABBREVIATION	ORG-ID
DEFINITION	A data chain composed of three (3) standard data elements "government department-establishment", "department-establishment component" and "component organization identifier" in that order.				
DATA USE IDENTIFIER NAME		ABBREVIATION		EXPLANATION	
AA Organization Identification		ORG-ID		See definition.	
DATA CODE CHARACTERISTICS		LENGTH	06	STRUCTURE	AN
REFERENCE NO	DATA ELEMENT NAME	STRUCTURE			
GO-NE	Government Department-Establishment	1A			
DE-NM	Department-Establishment Component	1AN			
CO-HJ	Component Organization Identifier	4AN			

Page 1 of 1

DATA CHAIN Organization Identification

OR-GD

II-53

MIL-STD-482A
1 April 1974

CM-39

APPENDIX II. Interim data chain and related features (cont'd)

EFFECTIVE DATE	ARA DSA	REFERENCE NUMBER
DATA CHAIN Part Identification		ABBREVIATION PRT-ID
DEFINITION	The unique identifier of an item or assembly. (The identifier is made up of Design Organizational Identification Code and Part Number and is the primary reference to source drawings and specification.)	
DATA USE IDENTIFIER AA Part Identification	ABBREVIATION PRT-ID	EXPLANATION See definition.
DATA CODE CHARACTERISTICS	LENGTH 22	STRUCTURE AN
DATA ITEM NAME	ABBREVIATION	EXPLANATION
	CODE 6-OI	The identifier is made up of Design Organizational Identification and Part Number.
	15-Part Number	In system application express code with dash after OI and before part number. The chain consists of: 6 Organizational Identification. 15 Part Number.

Page 1 of 1

DATA CHAIN Part Identification

II-54

MIL-STD-482A

1 April 1974

CM-40

APPENDIX II. *Interim data chain and related features (cont'd)*

EFFECTIVE DATE	ARA DSA	REFERENCE NUMBER
DATA CHAIN Procurement Instrument Identification Number		ABBREVIATION PIIN
DEFINITION	A chain composed of OI, Fiscal Year, Type of Procurement Instrument and PIIN Serial Number. (Reference: ASPR 20-203.2)	
DATA USE IDENTIFIER NAME	ABBREVIATION	EXPLANATION
AA Procurement Instrument Identification Number	PIIN	See definition.
AB Contract Number	CONTRACT NO	See definition.
DATA CODE CHARACTERISTICS	LENGTH 13	STRUCTURE AN
DATA ITEM NAME	ABBREVIATION	CODE
Literal	None	EXPLANATION

Page 1 of 1

DATA CHAIN Procurement Instrument Identification Number

II-55

MIL-STD-482A
1 April 1974

CM-41

APPENDIX II. Standard data element and related features (cont'd)

EFFECTIVE DATE	68-05-15	ARA DSA	REFERENCE NUMBER	PR-NB
DATA ELEMENT	Procurement Instrument Serial Number		ABBREVIATION	PRISN
DEFINITION	A number indicating place in the series and used in conjunction with other information as a means of identifying a procurement instrument issued pursuant to the Armed Services Procurement Regulation. (See Section XX, ASPR.)			
DATA USE IDENTIFIER NAME		ABBREVIATION	EXPLANATION	
AA Procurement Instrument Serial Number		PRISN	See definition.	
DATA CODE CHARACTERISTICS		LENGTH	04	STRUCTURE AN
DATA ITEM NAME		ABBREVIATION	CODE	EXPLANATION
Literal		None		0001 to ZZZZ

Page 1 of 1

DATA ELEMENT Procurement Instrument Serial Number

PR-NB

MIL-STD-482A
1 April 1974

CM-42

APPENDIX II. *Standard data element and related features (cont'd)*

EFFECTIVE DATE	68-03-16	ARA DSA	REFERENCE NUMBER	TY-NM
DATA ELEMENT	Type of Procurement Instrument		ABBREVIATION	TY-PROC-INST
DEFINITION	The general kinds of purchase documents used in the procurement process and issued pursuant to the Armed Forces Procurement Regulation. (See ASPR Section XX.)			
DATA USE IDENTIFIER NAME		ABBREVIATION	EXPLANATION	
AA Type of Procurement Instrument		TY-PROC-INST	See definition.	
DATA CODE CHARACTERISTICS		LENGTH	01	STRUCTURE A
DATA ITEM NAME	ABBREVIATION	CODE	EXPLANATION	
Agreement	AGREE	A	That type of procurement instrument which represents agreement of the parties as to certain terms which will become operative upon incorporation of the agreement into a subsequent contract or by the initiation of orders or calls. An agreement is not a contract, per se. It is not binding upon the parties until one of the actions subsequently occurs.	
Invitation for Bid	IFB	B	An instrument containing all of the terms and conditions of the contemplated contract which is used to solicit bids as required in formal advertising under 10 U.S.C. 2304(A).	
Contract	CONT	C	An instrument used for purchase of supplies and services which obligates, upon its execution by the parties, money to be paid by the United States upon furnishing of the required supplies or performance of the required services.	
Contract (Indefinite Delivery Type)	IDC	D	An instrument containing adequate consideration used for purchase of supplies and services which obligates only minimal monetary amounts, if any, upon its execution by the parties. Generally, the obligation of money to be paid by the United States occurs upon the issuance of delivery orders for the furnishing of the required supplies or performance of the required services.	
Federal Supply Schedule Order	FSSO	F	An instrument issued by an agency pursuant to the terms of an indefinite delivery type contract executed by the general services administration for the use of other government agencies. Order incurs an obligation of monies to be paid upon issuance.	

Page 1 of 3

DATA ELEMENT Type of Procurement Instrument

TY-NM

II-57

MIL-STD-482A
1 April 1974

CM-42 (cont'd)

APPENDIX II. *Standard data element and related features (cont'd)*

DATA ITEM NAME	ABBREVIATION	CODE	EXPLANATION
Lease Agreement	LA	L	An instrument used to memorialize the agreement of the parties in those circumstances where the government leases property, real or personal, to a contractor for use in performance of a supply or service contract or in the performance of a contract for research and development.
Purchase Order (Manual)	PO-M	M	The type of procurement instrument used when the government makes the unilateral offer of a contract. It becomes operative upon performance or acceptance by the offeree (contractor). Manual refers to those purchase orders effected by the use of typewriter or means other than ADPE. (To be deleted when documents can be prepared mechanically).
Notice of Intent to Purchase	NIP	N	An instrument used for the solicitation of offers in the procurement of subsistence supplies. Resultant contract is considered to be a negotiated contract. Use is generally dictated by rapid market fluctuation and need for immediate response to obtain required subsistence supplies at fair and reasonable prices. Is similar to the IFB in that it contains all terms and conditions of the contemplated contract.
Purchase Order (Automated)	PO-A	P	An instrument identical to the purchase order (manual) except that it is produced by the use of ADPE. Distinction is dictated by need for sufficient serial numbers to cover usage of both types.
Request for Quotation (Manual)	RFQ-M	Q	An instrument employed to elicit price, delivery, and other information in contemplation of writing a purchase order or entering into a contract of considerable magnitude after substantial negotiation by both parties. Responses are not offers susceptible to acceptance by the government. Manual refers to preparation by typewriter or means other than ADPE. (To be deleted when documents can be prepared mechanically.)
Request for Proposal	RFP	R	An instrument containing all of the provisions of the contemplated contract employed when negotiating under the provisions of 10 U.S.C. 2304(A) 1 through 17. It contemplates offers susceptible of acceptance by the government as offeree, with or without further negotiation. Negotiation and amendment of offers does not constitute counter offer.

Page 2 of 3

DATA ELEMENT Type of Procurement Instrument

TY-NM

II-58

MIL-STD-482A
1 April 1974

CM-42 (cont'd)

APPENDIX II. *Standard data element and related features (cont'd)*

DATA ITEM NAME	ABBREVIATION	CODE	EXPLANATION
Sales Contract	SC	S	An instrument used for sale of supplies, title to which is vested in the United States. It can be as a result of advertising for bids or, where authorized, by negotiation. This instrument type is included because of the sales-exchange provisions of the Federal Property and Administrative Services Act.
Request for Quotation (Automated)	RFQ-A	T	An instrument identical to the request for quotation (manual) except for the fact it is produced by the use of ADPE. Distinction is dictated by need for sufficient serial numbers to cover usage of both types.

Page 3 of 3

DATA ELEMENT Type of Procurement Instrument

TY-NM

II-59

MIL-STD-482A
1 April 1974

CM-43

APPENDIX II. *Standard data element and related features (cont'd)*

EFFECTIVE DATE	68-05-15	ARA	NAVY	REFERENCE NUMBER	PR-SB
DATA ELEMENT	Proofing Requirement			ABBREVIATION	PROOF-REQ
DEFINITION	Indication whether a test or demonstration of form, fit, and/or function shall be performed.				
DATA USE IDENTIFIER NAME		ABBREVIATION		EXPLANATION	
AA Proofing Requirement		PROOF-REQ		See definition.	
AB Design Proofing Requirement		DESIGN-PROOF-REQ			
AC Production Proofing Requirement		PRODUCT-PROOF-REQ			
AD Prior to Use Proofing Requirement		PRIOR-TO-USE-PROOF-REQ		Indication whether a test or demonstration of form, fit, and/or function shall be performed prior to use.	
AE Modification Kit Proofing Requirement		MOD-KIT-PROOF-REQ		Indication whether a test or demonstration installation of a modification kit is required prior to release to production or release for incorporation of the kit.	
DATA CODE CHARACTERISTICS		LENGTH	01	STRUCTURE	A
DATA ITEM NAME		ABBREVIATION		CODE	EXPLANATION
Proofing Required	None			R	
Proofing Not Required	None			N	

Page 1 of 1

DATA ELEMENT Proofing Requirement

PR-SB

II-60

MIL-STD-482A
1 April 1974

CM-44

APPENDIX II. *Interim data element and related features (cont'd)*

EFFECTIVE DATE	ARA OASD(C)	REFERENCE NUMBER
DATA ELEMENT Quantity		ABBREVIATION QTY
DEFINITION	The number of units associated with a unit of measure and a thing or things measured.	
DATA USE IDENTIFIER NAME	ABBREVIATION	EXPLANATION
AA Quantity	QTY	See definition.
DATA CODE CHARACTERISTICS	LENGTH 08	STRUCTURE N
DATA ITEM NAME	ABBREVIATION	CODE
Literal	None	EXPLANATION

Page 1 of 1

DATA ELEMENT Quantity

II-61

MIL-STD-482A
1 April 1974

CM-45

APPENDIX II. Standard data element and related features (cont'd)

EFFECTIVE DATE 68-05-15

ARA NAVY

REFERENCE NUMBER CO-LK

DATA ELEMENT Configuration Resource Affected

ABBREVIATION CONFIG-RES-AFF

DEFINITION The specific aspect of logistics associated with an item upon which a given change impacts.

DATA USE IDENTIFIER NAME

AA Configuration Resource Affected

AB Material Resource

ABBREVIATION

CONFIG-RES-AFF

MAT-RES

EXPLANATION

See definition.

See definition.

RELATED DATA CHAINS

CO-GV Complete Configuration Identification.

DATA CODE CHARACTERISTICS

LENGTH 01

STRUCTURE AN

DATA ITEM NAME

Depot Support Equipment

Intermediate Support

Equipment

User

Packaging Resources

Production Support

Equipment

Parts

Technical Manuals

Training Device

Training Resources

ABBREVIATION

None

None

None

None

None

None

None

None

None

CODE

D

I

U

P

E

S

M

T

N

EXPLANATION

Includes organizational and support equipment.

Includes tooling.

Includes Spare and Repair parts.

Other than Manuals and devices. Status Accounting System design must consider the fact that one or more resources (i.e., Data Item) may be affected by an engineering change.

Page 1 of 1

DATA ELEMENT Configuration Resource Affected

CO-LK

II-62

MIL-STD-482A
1 April 1974

CM-46

APPENDIX II. *Standard data element and related features (cont'd)*

EFFECTIVE DATE 68-05-15

ARA DIA

REFERENCE NUMBER SE-FB

DATA ELEMENT Security Classification

ABBREVIATION SECLAS

DEFINITION A category assigned to classified information or material to show the degree of damage to the interests of national defense which could result from its unauthorized disclosure and to show the standard of protection required to guard against unauthorized disclosure. This data element shall be used in conjunction with the data element SECURITY CLASSIFICATION GROUP.

DATA USE IDENTIFIER NAME

ABBREVIATION

EXPLANATION

AA Security Classification

SECLAS

See definition.

DATA CODE CHARACTERISTICS

LENGTH 01

STRUCTURE A

DATA ITEM NAME

ABBREVIATION

CODE

EXPLANATION

Top Secret

TOPSEC

T

Classified information or material which requires the highest degree of protection. The top secret classification shall be applied only to that information or material the defense aspect of which is paramount, and the unauthorized disclosure of which could result in exceptionally grave damage to the Nation.

Secret

SEC

S

Classified information or material, the unauthorized disclosure of which could result in serious damage to the Nation.

Confidential

CONF

C

Classified information or material, the unauthorized disclosure of which could be prejudicial to the defense interests of the Nation.

Unclassified

UNCLAS

U

A descriptor used to show the absence of classified information.

Restricted

RSTD

R

Classified information or material originated by a government or international organization, considered by the originator to require security protection of a lesser degree than confidential, which shall, when released to the U.S. Government under international agreement requiring its protection, be marked to show in English, in addition to the word "RESTRICTED", the name of the foreign government or international organization which originally classified the information; for example, CHILE--RESTRICTED.

Page 1 of 1

DATA ELEMENT Security Classification

SE-FB

II-63

MIL-STD-482A
1 April 1974

CM-47

APPENDIX II. *Interim data element and related features (cont'd)*

EFFECTIVE DATE	ARA DSA	REFERENCE NUMBER
DATA ELEMENT Serial Number		ABBREVIATION SER-NO
DEFINITION	The unique notation which identifies a single unit of a family of like units; normally assigned sequentially.	
DATA USE IDENTIFIER NAME	ABBREVIATION	EXPLANATION
AA Serial Number	SER-NO	See definition.
DATA CODE CHARACTERISTICS	LENGTH 15	STRUCTURE AN
DATA ITEM NAME	ABBREVIATION	CODE
Literal	None	EXPLANATION

Page 1 of 1

DATA ELEMENT Serial Number

II-64

MIL-STD-482A
1 April 1974

CM-48

APPENDIX II. *Interim data element and related features (cont'd)*

EFFECTIVE DATE	ARA NAVY	REFERENCE NUMBER
DATA ELEMENT Series Designator		ABBREVIATION SER-DESIG
DEFINITION	Within model, an identification of equipments having the same basic design but not necessarily identical configurations.	
DATA USE IDENTIFIER NAME	ABBREVIATION	EXPLANATION
AA Series Designator	SER-DESIG	See definition.
DATA CODE CHARACTERISTICS	LENGTH 02	STRUCTURE AN
DATA ITEM NAME	ABBREVIATION	CODE
Literal	None	EXPLANATION Within model, an identification of equipments having the same basic design but not necessarily identical configurations. See data chain "Type, Model, Series" for application.

Page 1 of 1

DATA ELEMENT Series Designator

II-65

MIL-STD-482A

1 April 1974

CM-49

APPENDIX II. *Interim data element and related features (cont'd)*

EFFECTIVE DATE	ARA	OASD(C)	REFERENCE NUMBER
DATA ELEMENT	Time		ABBREVIATION
DEFINITION	The measured period during which an action, process, or condition exists or continues.		
DATA USE IDENTIFIER NAME	ABBREVIATION	EXPLANATION	
AA Time	TIME	See definition.	
AB Downtime	DWN TIME	That element of time during which the item is not in condition to perform its intended function.	
AC Downtime Modification	DWN TIME MOD	That element of time during which the item is not in condition to perform its intended function as a result of the introduction of specific change(s) to an item.	
DATA CODE CHARACTERISTICS	LENGTH	05	STRUCTURE
DATA ITEM NAME	ABBREVIATION	CODE	EXPLANATION
Literal	None	Hours	A decimal point may be used in any position required to permit the listing of parts of an hour.

Page 1 of 1

DATA ELEMENT Time

II-66

MIL-STD-482A
1 April 1974

CM-50

APPENDIX II. *Interim data element and related features (cont'd)*

EFFECTIVE DATE	ARA NAVY	REFERENCE NUMBER
DATA ELEMENT Type Designator		ABBREVIATION TYPE-DESIG
DEFINITION	Within nomenclature, a categorization of equipments based on function or use.	
DATA USE IDENTIFIER NAME	ABBREVIATION	EXPLANATION
AA Type Designator	TYPE-DESIG	See definition.
DATA CODE CHARACTERISTICS	LENGTH 07	STRUCTURE AN
DATA ITEM NAME	ABBREVIATION	CODE
Literal	None	EXPLANATION See data chain "Type, Model, Series" for application.

Page 1 of 1

DATA ELEMENT Type Designator

II-67

MIL-STD-482A

1 April 1974

CM-51

APPENDIX II. Interim data chain and related features (cont'd)**EFFECTIVE DATE****ARA NAVY****REFERENCE NUMBER****DATA CHAIN** Type, Model, Series Designator**ABBREVIATION** TYPE-MOD-SER-DESIG**DEFINITION** A part of nomenclature; this code provides a method for identifying equipments, generally by broad performance and use characteristics.

A data chain consisting of all or part of: Type, Model, Series

DATA USE IDENTIFIER NAME
AA Type, Model, Series Designator**ABBREVIATION**
TYPE-MOD-SER-DESIG**EXPLANATION**
See definition.**DATA CODE CHARACTERISTICS****LENGTH** 26**STRUCTURE** AN**DATA ITEM NAME****ABBREVIATION****CODE**
Applicable
Standards for
Type Designa-
tor/Model De-
signator/Series
Designator**EXPLANATION**
The data code consists of 3 characters,
left justified, which identify
the standard upon which the type,
model, series designators are based.
The remainder of the data code is
the literal assignment for the re-
lated items. The maximum field length
provides for spaces, dashes, or
slashes as required by the appli-
cable standards.

CODE	TYPE	MODEL	SERIES	SUFFIX
	1 2 3 4 5 6 7	1 2 3 4 5 6 7 8 9 0	1 2	IDENTIFICATION
AN/	X X X	X X X	X	1 2 3 4 5 6 7 X X X X X X X
A-2	X X X X X	X X		
A-3	X X	X X X	X X	
A-4	X X X X X X X	X X		
B-1	X X X X	X X X	X	
B-2	X X X	X X X	X	
C-1	X X	X X X X X X X X X X		
C-2	X X X X	X X X X X X X		
D-1	X X X X X X	X X X X X		

Page 1 of 2

DATA CHAIN Type, Model, Series Designator

MIL-STD-482A
1 April 1974

CM-51 (cont'd)

APPENDIX II. Interim data element and related features (cont'd)

<u>CODE</u>	<u>NUMBER</u>	<u>TITLE</u>
AN/	MIL-STD-196B	Joint Electronics Type Designation System
A-2	MIL-STD-875 (ASG)	Type Designation for Aeronautical and Support
A-3	MIL-STD-155A	Joint Photographic Type Designation System
A-4	MIL-STD-815	Designation System for Liquid, Solid and Liquid-Solid (Hybrid) Propellant Rocket Engines and Motors
B-1	AFR-66-20 AR-705-36 BuWeps 8800.2	Designating, Redesignating and Naming Military Rockets and Guided Missiles
B-2	AFR-66-11 AR-700-26	Designating, Redesignating and Naming Military Aircraft
C-1	ANA Bulletin 395b	Engines, Aircraft Reciprocating, Designation of
C-2	ANA Bulletin 306m	Engines, Aircraft Turbine and Jet, Designation of
D-1	OR-1	Naval Ordnance Requirements, Mark and Mod Nomenclature System

Page 2 of 2

DATA CHAIN Type, Model, Series Designator

II-69

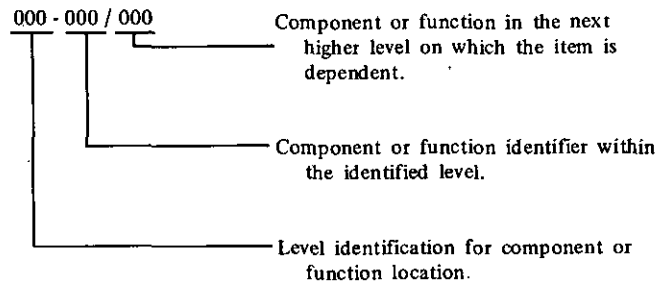
MIL-STD-482A
1 April 1974

CM-52

APPENDIX II. *Interim data chain and related features (cont'd)*

EFFECTIVE DATE	ARA NAVY	REFERENCE NUMBER
DATA CHAIN	Work Breakdown Structure Key	ABBREVIATION WBS-KEY
DEFINITION	An identification system which relates configuration items to their position or location within in structured hardware unit; or, relates <i>organizational structure to configuration items and their</i> resource categories. Reference: MIL-STD-881.	

DATA USE IDENTIFIER NAME	ABBREVIATION	EXPLANATION
AA Work Breakdown Structure Key	WBS-KEY	See definition.
DATA CODE CHARACTERISTICS	LENGTH 11	STRUCTURE AN
DATA ITEM NAME	ABBREVIATION	CODE
The nomenclature of the item for which the location is coded.		Location code for the item
		EXPLANATION
		For multiapplication items a code will exist for each application.
		For system application the WBS key is structured by utilization of the Data Element Location Index. Use dash and slash as indicated.
		Reference: MIL-STD-881 for aircraft, electronics, missile, ordnance, ship, space and surface vehicle systems.



Page 1 of 2

DATA CHAIN Work Breakdown Structure Key

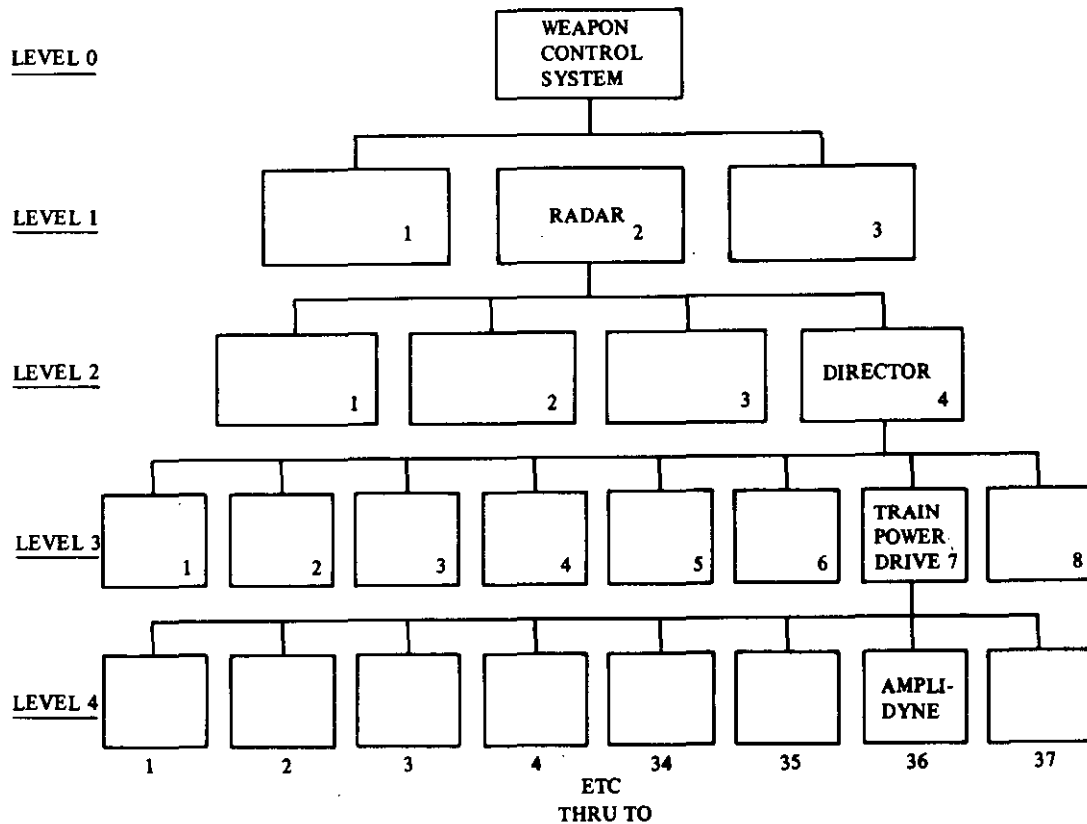
II-70

MIL-STD-482A
1 April 1974

CM-52 (cont'd)

APPENDIX II. *Interim data chain and related features (cont'd)*

EXAMPLE:



LEVEL 0 WEAPON CONTROL SYSTEM	001-002/000
LEVEL 1 RADAR	002-004/002
LEVEL 2 DIRECTOR	003-007/004
LEVEL 3 TRAIN POWER DRIVE	004-036/007
LEVEL 4 AMPLIDYNE	

WORK BREAKDOWN STRUCTURE KEY

Page 2 of 2

MIL-STD-482A
1 April 1974

CM-53

APPENDIX II. Standard data element and related features (cont'd)

EFFECTIVE DATE 66-10-27 ARA OASD(C) REFERENCE NUMBER YE-NA

DATA ELEMENT Year ABBREVIATION YR

DEFINITION A period of either 365 or 366 days of a century as defined by the Gregorian calendar.

DATA USE IDENTIFIER NAME	ABBREVIATION	EXPLANATION
AA Year	YR	See definition.
AB Fiscal Year	FY	Twelve-month period selected for accounting purposes.

RELATED DATA CHAINS

CE-HK Century Year
CO-GT Complete Calendar Date
CO-GX Complete Date, Cartographic Event
DA-FA Date
OR-EB Ordinal Date
YE-NH Year and Month

DATA CODE CHARACTERISTICS LENGTH 02 STRUCTURE N

DATA ITEM NAME	ABBREVIATION	CODE	EXPLANATION
Literal	None	00-99	The ordinal values (data items) of this data element are represented by a two-digit number.

Page 1 of 1

DATA ELEMENT Year

YE-NA

MIL-STD-482A
1 April 1974

CM-54

APPENDIX II. *Standard data element and related features (cont'd)*

EFFECTIVE DATE 69-09-30

ARA DIA

REFERENCE NUMBER CO-XV

DATA ELEMENT Countries of the World

ABBREVIATION CNTRY-WORLD

DEFINITION The independent first-level, geographic-political areas and their dependencies, areas of quasi-independence, and areas with special sovereignty associations, unrecognized, but sovereign political regimes and administrative divisions without sovereignty, and outlying areas of the United States, including islands in dispute.

DATA USE IDENTIFIER NAME	ABBREVIATION	EXPLANATION
AA Countries of the World	CNTRY-WORLD	See definition.
AB North Atlantic Treaty Country Code	NATO-CODE	Used with federal stock number which indicates the NATO country which cataloged the item.
AC Country of Location	CNTRY-LOC	The geographic-political area or country within whose recognized borders an entity is known or is believed to be located.
AD Country of Location, Electronic Site	CNTRY-LOC-ELEC-SITE	The geographic-political area or country within whose recognized borders an electronic radar site is known or believed to be located.
AE Country of Location, Electronic Equipment	CNTRY-LOC-ELEC-EQPT	The geographic-political area or country within whose recognized borders a set of electronic radar equipment is known or believed to be located.
AF Country of Allegiance	CNTRY-ALLEG	The geographic-political area or country to which an entity is loyal or pays allegiance.
AG Country Providing Military Support	CNTRY-PROV-MIL-SUPRT	The geographic-political area or country which is known or is believed to be providing military support.
AH Country Controlling Facility	CNTRY-CNTRL-FAC	The geographic-political area or country which exercises operational control of a facility.
AI Country Allegiance Personnel Manning Facility	CNTRY-ALLEG-PSNL-MAN-FAC	The geographic-political area or country to which the personnel manning and operating a facility are loyal or pay allegiance.
AJ Country of Origin	CNTRY-ORIGIN	Country where an object or entity was organized, created, built, constructed, or manufactured. It includes those parts, components, or sub-assemblies manufactured for export to and assembly in another country.
AK Country Providing Sanctuary Area	CNTRY-PRVDG-SNCTY	Indicates the country providing a political or military sanctuary or area near or contiguous to the combat zone which by tacit agreement between the host country and a using country is exempt from attack by the host country, and therefore serves as a refuge for staging, logistic; or other activities of the using forces.

Page 1 of 8

DATA ELEMENT Countries of the World

CO-XV

II-73

MIL-STD-482A
1 April 1974

CM-54 (cont'd)

APPENDIX II. *Standard data element and related features (cont'd)*

DATA USE IDENTIFIER NAME	ABBREVIATION	EXPLANATION
AL Country Provided Sanctuary Area	CNTRY-PRVDD- SNCTY	Indicates the country that is provided a political or military sanctuary or area near or contiguous to the combat area which by tacit agreement between the host country and the using country is exempt from attack by the host country and therefore serves as a refuge for staging, logistic, or other activities of the using forces.

RELATED DATA CHAINS

GR-AB Grade by country and service designator.

GR-BW Grade with modifier by country and service designator.

DATA CODE CHARACTERISTICS	LENGTH	02	STRUCTURE	A
DATA ITEM NAME	ABBREVIATION	CODE	EXPLANATION	
Afghanistan		AF		
Albania		AL		
Algeria		AG		
American Samoa		AQ		
Andorra		AN		
Angola		AO		
Anguilla		AV		
Antarctica		AY		
Antigua		AC		
Argentina		AR		
Ashmore and Cartier Islands		AT		
Australia		AS		
Austria		AU		
Bahama Islands		BF		
Bahrain		BA		
Bangladesh		BG		
Barbados		BB		
Belgium		BE		
Bermuda		BD		
Bhutan		BT		
Bolivia		BL		
Botswana		BC		
Bouvet Is.		BV		
Brazil		BR		
Belize		BH		
British Indian Ocean Territory		IO		
British Solomon Islands		BP		
British Virgin Islands		VI		
Brunei		BX		
Bulgaria		BU		

Page 2 of 8

DATA ELEMENT Countries of the World

CO-XV

MIL-STD-482A
1 April 1974

CM-54 (cont'd)

APPENDIX II. Standard data element and related features (cont'd)

DATA ITEM NAME	ABBREVIATION	CODE	EXPLANATION
Burma		BM	
Burundi		BY	
Cambodia		CB	
Cameroon		CM	
Canada		CA	
Canal Zone		PQ	
Canton and Enderbury Islands		EQ	
Cape Verde Is.		CV	
Cayman Islands		CJ	
Central African Republic		CT	
Chad		CD	
Chile		CI	
China, Peoples Republic of		CH	
China, Republic of		TW	
Christmas Is. (Indian Ocean)		KT	
Cocos Is. (Indian Ocean)		CK	
Colombia		CO	
Comoro Is.		CN	
Congo (Brazzaville)		CF	
Coral Sea Islands Territory		CR	
Cook Islands		CW	
Costa Rica		CS	
Cuba		CU	
Cyprus		CY	
Czechoslovakia		CZ	
Dahomey		DM	
Denmark		DA	
Dominica		DO	
Dominican Republic		DR	
Ecuador		EC	
Egypt		EG	
El Salvador		ES	
Equatorial Guinea		EK	
Ethiopia		ET	
Faeroes Is.		FO	
Falkland Is.		FA	
Fiji		FJ	
Finland		FI	
France		FR	
French Guiana		FG	
French Polynesia		FP	
French Southern and Antarctic Lands		FS	
French Territory of the Afars and Issas		FT	
Gabon		GB	
Gambia		GA	

Page 3 of 8

DATA ELEMENT Countries of the World

CO-XV

II-75

MIL-STD-482A
1 April 1974

CM-54 (cont'd)

APPENDIX II. *Standard data element and related features (cont'd)*

DATA ITEM NAME	ABBREVIATION	CODE	EXPLANATION
Gaza Strip		GZ	
Germany, Federal Republic of		GE	
Germany, East		GC	
Ghana		GH	
Gibraltar		GI	
Gilbert and Ellice Islands (Includes Central and Southern Line Islands)		GN	
Greece		GR	
Greenland		GL	
Grenada		GJ	
Guadeloupe		GP	
Guam		GQ	
Guatemala		GT	
Guinea		GV	
Guyana		GY	
Haiti		HA	
Heard and McDonald Islands		HM	
Honduras (Includes Swan Islands)		HO	
Hong Kong		HK	
Hungary		HU	
Iceland		IC	
India		IN	
Indonesia		ID	
Iran		IR	
Iraq		IZ	
Iraq-Saudi Arabia Neutral Zone		IY	
Ireland		EI	
Israel		IS	
Israel-Jordan Demilitarized Zones		IW	
Israel-Syria Demilitarized Zones		IU	
Italy		IT	
Ivory Coast		IV	
Jamaica		JM	
Jan Mayen		JN	
Japan (Includes Ryukyu Is.)		JA	
Johnston Atoll		JQ	
Jordan		JO	
Kenya		KE	
Korea, North		KN	
Korea, Republic of		KS	
Kuwait		KU	

Page 4 of 8

DATA ELEMENT Countries of the World

CO-XV

MIL-STD-482A

1 April 1974

CM-54 (cont'd)

APPENDIX II. *Standard data element and related features (cont'd)*

DATA ITEM NAME	ABBREVIATION	CODE	EXPLANATION
Laos		LA	
Lebanon		LE	
Lesotho		LT	
Liberia		LI	
Libya		LY	
Liechtenstein		LS	
Luxembourg		LU	
Macao		MC	
Madagascar		MA	
Malawi		MI	
Malaysia		MY	
Maldives		MV	
Mali		ML	
Malta		MT	
Martinique		MB	
Mauritania		MR	
Mauritius		MP	
Mexico		MX	
Midway Is.		MQ	
Monaco		MN	
Mongolia		MG	
Montserrat		MH	
Morocco		MO	
Mozambique		MZ	
Nauru		NR	
Nepal		NP	
Netherlands		NL	
Netherlands Antilles		NA	
New Caledonia		NC	
New Hebrides		NH	
New Zealand		NZ	
Nicaragua		NU	
Niger		NG	
Nigeria		NI	
Niue		NE	
Norfolk Is.		NF	
Norway		NO	
Oman		MU	
Pakistan		PK	
Panama		PN	
Papua New Guinea		PP	
Paracel Islands		PF	
Paraguay		PA	
Peru		PE	
Phillipines		RP	

Page 5 of 8

DATA ELEMENT Countries of the World

CO-XV

II-77

MIL-STD-482A
1 April 1974

CM-54 (cont'd)

APPENDIX II. *Standard data element and related features (cont'd)*

DATA ITEM NAME	ABBREVIATION	CODE	EXPLANATION
Pitcairn		PC	
Poland		PL	
Portugal		PO	
Portugese Guinea		PU	
Portugese Timor		PT	
Puerto Rico		RQ	
Qatar		QA	
Reunion		RE	
Romania		RO	
Rwanda		RW	
St. Christopher-Nevis		SC	
St. Helena		SH	
St. Lucia		ST	
St. Pierre and Miquelon		SB	
St. Vincent		VC	
San Marino		SM	
Sao Tome E Principe		TP	
Saudi Arabia		SA	
Senegal		SG	
Seychelles		SE	
Sierra Leone		SL	
Sikkim		SK	
Singapore		SN	
Sri Lanka (Ceylon)		CE	
Somalia		SO	
South Africa		SF	
South-West Africa		WA	
Southern Rhodesia		RH	
Soviet Union		UR	
Spain		SP	
Spanish Sahara		SS	
Spanish Terr. of Northern Morocco		ME	
Spratly Is.		PG	
Sudan		SU	
Surinam		NS	
Svalbard		SV	
Swaziland		WZ	
Sweden		SW	
Switzerland		SZ	
Syria		SY	
Tanzania		TZ	
Thailand		TH	
Togo		TO	
Tokelau Islands		TL	
Tonga		TN	

Page 6 of 8

DATA ELEMENT Countries of the World

CO-XV

MIL-STD-482A
1 April 1974

CM-54 (cont'd)

APPENDIX II. *Standard data element and related features (cont'd)*

DATA ITEM NAME	ABBREVIATION	CODE	EXPLANATION
Trinidad and Tobago		TD	
Trust Territory of the Pacific Islands		TQ	
Tunisia		TS	
Turkey		TU	
Turks and Caicos Islands		TK	
Uganda		UG	
United Arab Emirates		TC	
United Kingdom		UK	
United States		US	
United States Misc. Caribbean Islands		BQ	
United States Misc. Pacific Islands		IQ	
Upper Volta		UV	
Uruguay		UY	
Vatican City		VT	
Venezuela		VE	
Vietnam, North		VN	
Vietnam, Republic of		VS	
Virgin Islands		VQ	
Wake Is.		WQ	
Wallis and Futuna		WF	
West Berlin		WB	
Western Samoa		WS	
Yemen Arab Republic		YE	
Yemen, Peoples Democratic Republic of		YS	
Yugoslavia		YO	
Zaire, Republic of		CG	
Zambia		ZA	

Page 7 of 8

DATA ELEMENT Countries of the World

CO-XV

II-79

MIL-STD-482A
1 April 1974

CM-54 (cont'd)

APPENDIX II. *Standard data element and related features (cont'd)*

COUNTRIES OF THE WORLD IN CODE SEQUENCE

(Reference DoD Manual 5000.12M)

NATO COUNTRIES

DATA ITEM NAME	ABBREVIATION	CODE	EXPLANATION
Belgium		BE	
Canada		CA	
Denmark		DA	
France		FR	
Greece		GR	
Germany, FR		GE	
Iceland		IC	
Italy		IT	
Luxembourg		LU	
Netherlands		NL	
Norway		NO	
Portugal		PO	
Turkey		TU	
United Kingdom		UK	
United States of America		US	

Page 8 of 8

DATA ELEMENT Countries of the World

CO-XV

II-80

MIL-STD-482A
1 April 1974

CM-55

APPENDIX II. Standard data element and related features (cont'd)

EFFECTIVE DATE 68-09-27		ARA NAVY	REFERENCE NUMBER MO-BR
DATA CHAIN Modification Work Order Number		ABBREVIATION MWO-NO	
DEFINITION The identifier of a document which authorizes incorporation of a specific retrofit change. The document contains instructions for incorporation of the change. (Normally, this document refers to a "retrofit kit" which contains the parts, materials, and precise detailed installation instructions necessary to make the change.)			
DATA USE IDENTIFIER NAME		ABBREVIATION	EXPLANATION
AA Modification Work Order Number		MWO-NO	See definition.
AB Ship Alteration Number		SHIPALT-NO-NAVY	A unique identifier of an alteration to a ship.
AC Ordnance Alteration Number (Navy)		ORDALT-NO (NAVY)	A unique identifier of an alteration to Naval Ordnance equipment.
AD Air Alteration Number (Navy)		AIR-ALT-NO (NAVY)	A unique identifier of an alteration to Naval Aircraft.
AE Air Force Time Compliance Technical Order Number		AF-TIME-COMP-TECH-ORD-NO	A unique identifier of an alteration to Air Force aircraft or equipment.
AF Special Project Alteration Number		SPALT-NO	A unique identifier of an alteration to Special Project equipment.
DATA CODE CHARACTERISTICS		LENGTH 17	STRUCTURE AN
DATA ITEM NAME	ABBREVIATION	CODE	EXPLANATION
Literal	None		

Page 1 of 3

DATA CHAIN Modification Work Order Number

MO-BR

II-81

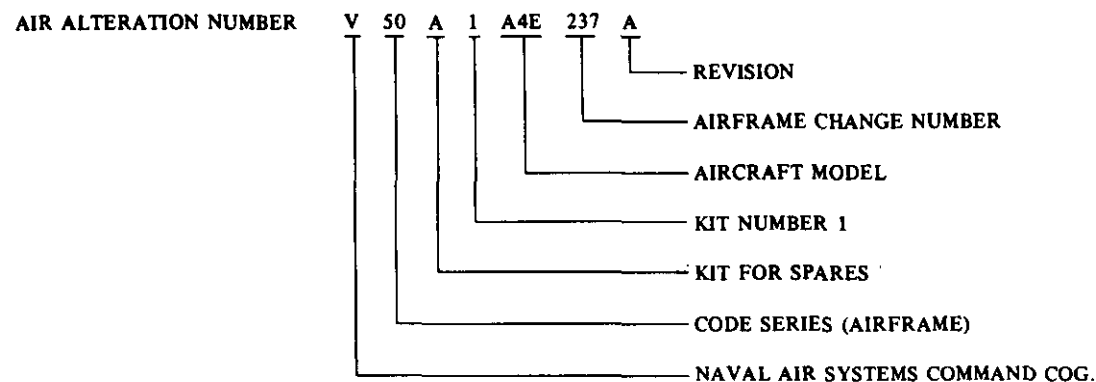
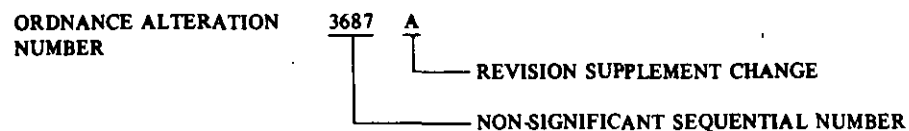
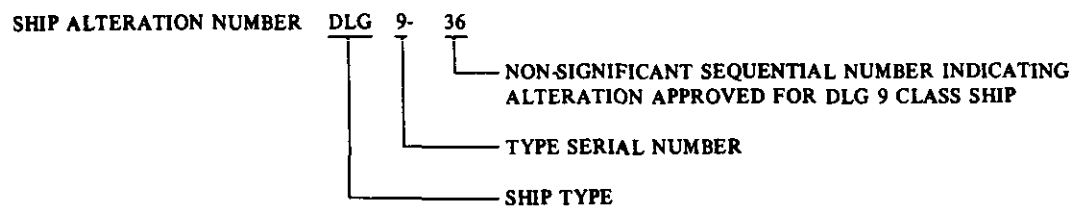
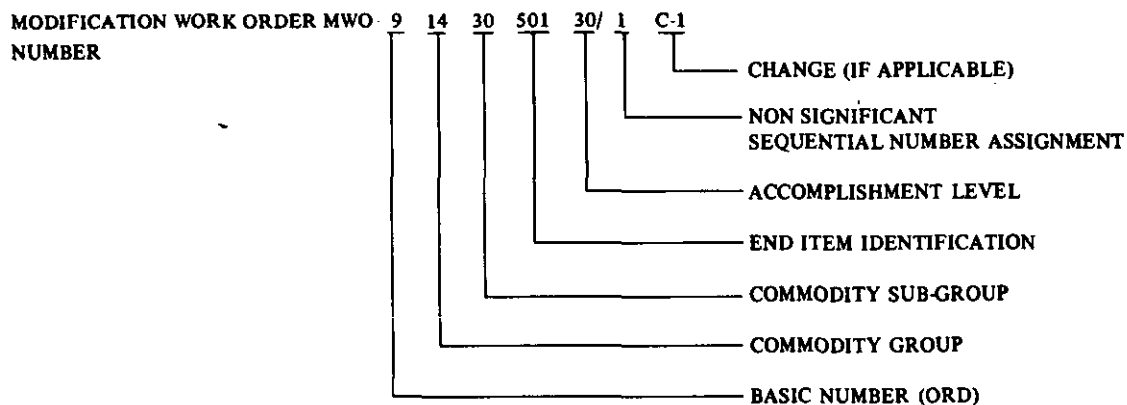
MIL-STD-482A
1 April 1974

CM-55 (cont'd)

APPENDIX II. *Standard data element and related features (cont'd)*

EXAMPLES OF EXISTING NUMBERS:

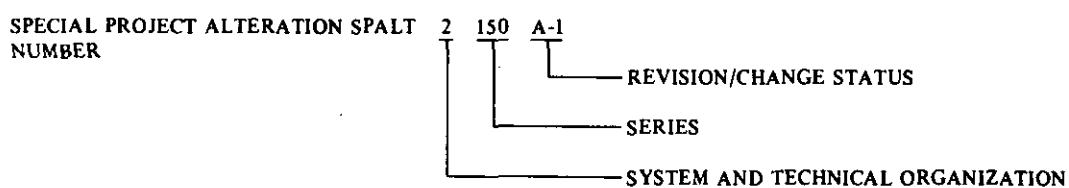
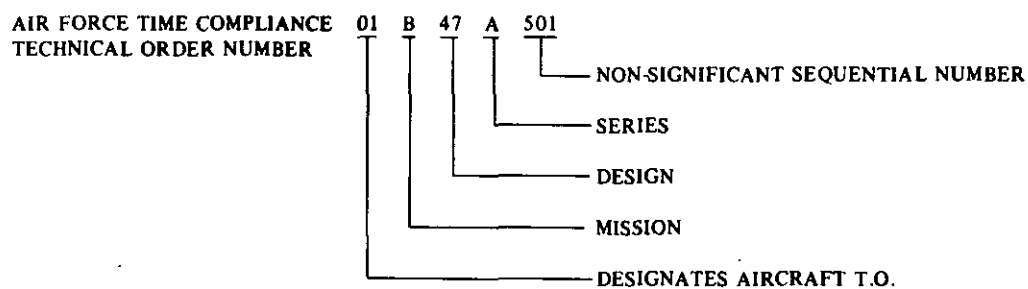
LITERAL



MIL-STD-482A
1 April 1974

CM-55 (cont'd)

APPENDIX II. Standard data element and related features (cont'd)



Page 3 of 3

MIL-STD-482A
1 April 1974

CM-56

APPENDIX II. *Standard data chain and related features (cont'd)*

EFFECTIVE DATE 69-01-01 **ARA** OASD(C) **REFERENCE NUMBER** OR-EB

DATA CHAIN Ordinal Date **ABBREVIATION** ORD-DATE

DEFINITION This data chain is composed of the data elements -Year- and -Day of Year- in that sequence. Data items are expressed in the literal data items of the two data elements. For example, the last day of the calendar year 1968 would be expressed as 68366.

DATA USE IDENTIFIER NAME	ABBREVIATION	EXPLANATION
AA Ordinal Date	ORD-DATE	See definition.

DATA CODE CHARACTERISTICS	LENGTH 05	STRUCTURE N
----------------------------------	------------------	--------------------

REFERENCE NO.	DATA ELEMENT NAME	STRUCTURE
YE-NA	Year	2N
DA-OB	Day or Year	3N

Page 1 of 1

DATA CHAIN Ordinal Date

OR-EB

II-84

MIL-STD-482A
1 April 1974

CM-57

APPENDIX II. *Standard data element and related features (cont'd)*

EFFECTIVE DATE	69-01-01	ARA	OASD(C)	REFERENCE NUMBER	DA-OB
DATA ELEMENT	Day of Year			ABBREVIATION	DA-OF-YR
DEFINITION	A twenty-four (24) hour period of elapsed mean solar or calendar time representing the time period for the earth to complete one revolution upon its axis, and by which a calendar year, beginning with the first instant of January 1st and ending with the last instant of December 31st, is divided into 365 or 366 (in leap years) equal parts.				
DATA USE IDENTIFIER NAME	AA Day of Year	ABBREVIATION	DA-OF-YR	EXPLANATION	See definition.
RELATED DATA CHAINS	OR-EB Ordinal Date				
DATA CODE CHARACTERISTICS		LENGTH	03	STRUCTURE	N
DATA ITEM NAME	Literal	ABBREVIATION	None	CODE	001-366
				EXPLANATION	For example, the first day of any calendar year would be expressed as 001.

Page 1 of 1

DATA ELEMENT Day of Year

DA-OB

II-85

MIL-STD-482A

1 April 1974

CM-58

APPENDIX II. *Interim data element and related features (cont'd)*

EFFECTIVE DATE	ARA DSA	REFERENCE NUMBER
DATA ELEMENT Supplementary Procurement Instrument Identification Number		ABBREVIATION SUPP-PIIN
DEFINITION	A number used in conjunction with Basic Procurement Instrument Identification Number (ASPR 20-204).	
DATA USE IDENTIFIER NAME	ABBREVIATION	EXPLANATION
AA Supplementary Procurement Instrument Identification Number	SUPP-PIIN	See definition.
AB Amendment Numbers for Solicitation Document	AMEND-NR-FOR-SOLIC-DOC	A sequential number assigned to amendments to each solicitation document.
AC Modification Numbers to Control and Agreement	MOD-NR-TO-CONT-AND-AGREE	A chronological sequence number assigned by each issuing office.
AD Call/Order Numbers Under Contract	CALL/ORD-NR-UNDER-CONT	Call/Order Numbers under Contract (except Federal Supply Schedule Contracts) under Basic Ordering Agreements and under Blanket Purchase Agreements.
AE Provisioning Order Numbers	PROV-ORD-NR	Provisioning Orders (including Provisioning Orders Obligor Documents (POOD's)) or similar documents.
DATA CODE CHARACTERISTICS	LENGTH 04	STRUCTURE AN
DATA ITEM NAME	ABBREVIATION	CODE
Amendment Number to Solicitation	None	Literal 4N commencing with 0001 thru 9999
Modification Numbers for Contracts and Agreements	None	Literal 4 AN
Call/Order Numbers Under Procurement Instrument Issued by Purchasing Office (OE)	None	Literal 4N 0001 to 9999
Call/Order Numbers Under Procurement Instrument Issued by other than Purchasing Office (OI)	None	Literal 4 AN
		First position A or P A - Contract Administrative Office Modification Number P - Purchasing Office Modification Number Reference: ASPR 20-204.4
		Reference: ASPR 20-204.4 First and Second positions: An Call/Order Serial Number assigned to Appendix N of ASPR to the Activity issuing the Call/Order. Letters A, I, O, and P shall not be used in the first position. A and P may be used in the second position. Third and Fourth positions: Serial numbers assigned by issuing office used with Procurement Instrument Identification Number, commencing with 01 to 99, then AA, AB, to ZZ.

Page 1 of 2

DATA ELEMENT Supplementary Procurement Instrument Identification Number

II-86

~~MIL-STD-482A~~
1 April 1974

CM-58 (cont'd)

APPENDIX II. Interim data element and related features (cont'd)

DATA ITEM NAME	ABBREVIATION	CODE	EXPLANATION
Provisioning Order Numbers			Same as Call/Order when executed against a Procurement Instrument other than a Call/Order under a basic ordering agreement. For provisioning order under a Call/Order see Call/Order Modification Indicator.

Page 2 of 2

DATA ELEMENT Supplementary Procurement Instrument Identification Number

II-87

MIL-STD-482A

1 April 1974

CM-59

APPENDIX II. *Interim data element and related features (cont'd)*

EFFECTIVE DATE		ARA NAVY	REFERENCE NUMBER
DATA ELEMENT	Type, Model, Series Designator Suffix		ABBREVIATION TYPE-MOD-SER-DES-SUFFIX
DEFINITION	Supplemental identification used with a Type-Model-Series designator (Reference: MIL-STD-196).		
DATA USE IDENTIFIER		ABBREVIATION	EXPLANATION
AA Type, Model, Series Designator Suffix		TYPE-MOD-SER-DES-SUFFIX	See definition.
DATA CODE CHARACTERISTICS		LENGTH 07	STRUCTURE AN
DATA ITEM NAME	ABBREVIATION	CODE	EXPLANATION
Literal	None		See MIL-STD-196 for data codes. Includes space, dash, parenthesis, or slash as required to append to series designator.

Page 1 of 1

DATA ELEMENT Type, Model, Series Designator Suffix**II-88**

MIL-STD-482A
1 April 1974

CM-60

APPENDIX II. *Standard data element and related features (cont'd)*

EFFECTIVE DATE 67-05-19 ARA DSA REFERENCE NUMBER FE-KA

DATA ELEMENT Federal Supply Class ABBREVIATION FED-SUP-CL

DEFINITION A grouping of relatively homogeneous commodities, with respect to their physical or performance characteristics, the relationship of parts/attachments/accessories to the next higher assemblies for which they are specifically designed, or that the items therein are such as are usually procured or issued together. (See para. 331 of Federal Manual for Supply Cataloging M 1-3 dated September 1964)

DATA USE IDENTIFIER NAME	ABBREVIATION	EXPLANATION
AA Federal Supply Class	FED-SUP-CL	See definition.

RELATED DATA CHAINS
FE-IA Federal Stock Number
FE-KC Federal Supply Classification

DATA CODE CHARACTERISTICS	LENGTH 02	STRUCTURE N
---------------------------	-----------	-------------

DATA ITEM NAME	ABBREVIATION	CODE	EXPLANATION
Literal	None	01-99	See Cataloging Handbook H 2-1.

Page 1 of 1

DATA ELEMENT Federal Supply Class

FE-KA

II-89

MIL-STD-482A
1 April 1974

CM-61

APPENDIX II. *Interim data element and related features (cont'd)*

EFFECTIVE DATE	ARA DSA	REFERENCE NUMBER
DATA ELEMENT Part Number		ABBREVIATION PART-NO
DEFINITION The unique identifier (within design activity) of an individual part, assembly, or item.		
DATA USE IDENTIFIER NAME	ABBREVIATION	EXPLANATION
AA Part Number	PART-NO	See definition.
DATA CODE CHARACTERISTICS	LENGTH 15	STRUCTURE AN
DATA ITEM NAME	ABBREVIATION	CODE
Literal	None	EXPLANATION

Page 1 of 1

DATA ELEMENT Part Number

II-90

MIL-STD-482A
1 April 1974

CM-62

APPENDIX II. *Standard data chain and related features (cont'd)*

EFFECTIVE DATE	68-09-27	ARA	NAVY	REFERENCE NUMBER	CO-LC
DATA CHAIN	Configuration Identification	ABBREVIATION	CONFIG-IDENT		
DEFINITION	A data chain consisting of Configuration Item Identifier and Configuration Item Variant.				
DATA USE IDENTIFIER NAME		ABBREVIATION		EXPLANATION	
AA Configuration Identification		CONFIG-IDENT		See definition.	
DATA CODE CHARACTERISTICS		LENGTH	10	STRUCTURE	AN
REFERENCE NO	DATA ELEMENT NAME			STRUCTURE	
CO-LE	Configuration Item Identification			7AN	
CO-LI	Configuration Item Variant			3AN	

Page 1 of 1

DATA CHAIN Configuration Identification

CO-LC

II-91

MIL-STD-482A

1 April 1974

CM-63

APPENDIX II. Standard data element and related features (cont'd)

EFFECTIVE DATE	70-06-30	ARA	NAVY	REFERENCE NUMBER	DO-BQ
DATA ELEMENT	Document Title	ABBREVIATION	DOC-TITLE		
DEFINITION	The distinctive narrative description of a written or printed paper or record.				
DATA USE IDENTIFIER NAME		ABBREVIATION		EXPLANATION	
AA Document Title		DOC-TITLE		See definition.	
DATA CODE CHARACTERISTICS		LENGTH	60	STRUCTURE	AN
DATA ITEM NAME	ABBREVIATION	CODE		EXPLANATION	
Literal	None			Describe the document title as completely as possible. Use only approved abbreviations. Enter the document title when one exists. Otherwise, describe the document content by giving the subject. (Letters normally will use the subject as title.)	

Page 1 of 1

DATA ELEMENT Document Title

DO-BQ

II-92

MIL-STD-482A
1 April 1974

CM-64

APPENDIX II. Interim data element and related features (cont'd)

EFFECTIVE DATE	ARA NAVY	REFERENCE NUMBER
DATA ELEMENT Work Breakdown Structure Location Index		ABBREVIATION WBS-LOC-INDEX
DEFINITION	An item or element within a structured hardware assembly or organization. Ref: MIL-STD-881	
DATA USE IDENTIFIER NAME	ABBREVIATION	EXPLANATION
AA Work Breakdown Structure Location Index	WBS-LOC-INDEX	See definition.
AB Tier Index	TIER-INDEX	Level identification for component or function index.
AC Component/Function Index	COMP-FUN-INDEX	Component or function within a Level.
DATA CODE CHARACTERISTICS	LENGTH 03	STRUCTURE AN
DATA ITEM NAME	ABBREVIATION	EXPLANATION
The nomenclature of the item for which the location is coded.	None	A code will exist for each application. Reference: MIL-STD-881 for Aircraft, Electronics, Missile, Ordnance, Ship, Space and Surface Vehicle Systems.

Page 1 of 2

DATA ELEMENT Work Breakdown Structure Location Index

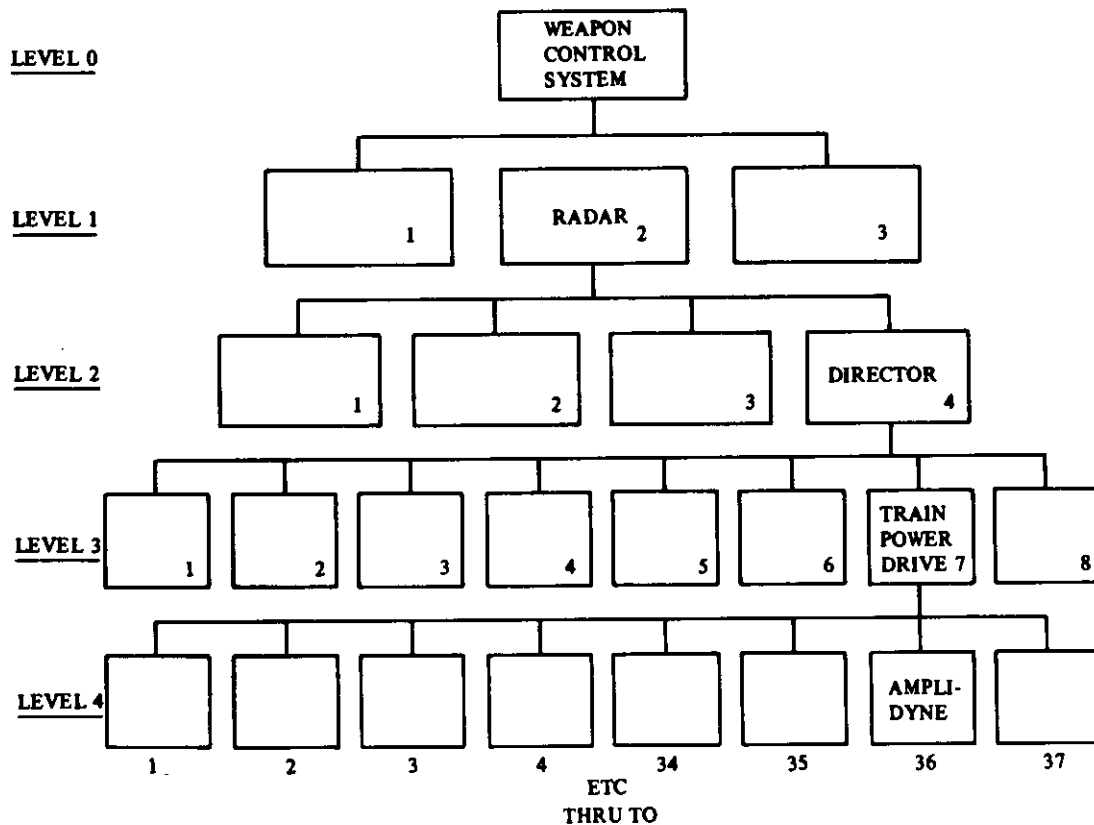
II-93

MIL-STD-482A
1 April 1974

CM-64 (cont'd)

APPENDIX II. Interim data element and related features (cont'd)

EXAMPLE:



WEAPON CONTROL SYSTEM
RADAR
DIRECTOR
TRAIN POWER DRIVE
AMPLIDYNE

001-002
002-004
003-007
004-036

LEVEL

LOCATION IN LEVEL

WORK BREAKDOWN STRUCTURE

KEY LOCATION INDEX

Page 2 of 2

DATA ELEMENT Work Breakdown Structure Location Index

MIL-STD-482A
1 April 1974

CM-77

APPENDIX II. *Standard data element and related features (cont'd)*

EFFECTIVE DATE	71-04-30	ARA	NAVY	REFERENCE NUMBER	CO-GV
DATA CHAIN	Complete Configuration Identification			ABBREVIATION	COMP-CONFIG-IDENT
DEFINITION	A data chain identifying the total designation of an item, discrete assembly or part whose configuration is controlled or subject to control.				
DATA USE IDENTIFIER NAME		ABBREVIATION	EXPLANATION		
AA Complete Configuration Identification		COMP-CONFIG-IDENT	See definition.		
DATA CODE CHARACTERISTICS		LENGTH	11	STRUCTURE	AN
REFERENCE NO	DATA ELEMENT NAME	STRUCTURE			
CO-LE	Configuration Item Identification	7AN			
CO-LI	Configuration Item Variant	3AN			
CO-LK	Configuration Resource Affected	1AN			

Page 1 of 1

DATA ELEMENT Complete Configuration Identification

CO-GV

II-95

MIL-STD-482A
1 April 1974

CM-78

APPENDIX II. *Interim data element and related features (cont'd)*

EFFECTIVE DATE	ARA	NAVY	REFERENCE NUMBER
DATA ELEMENT Medium of Recording			ABBREVIATION MEDIUM-OF-RECORD
DEFINITION	Storage vehicle for the reference, reproduction or transcription of data or information.		
DATA USE IDENTIFIER NAME	ABBREVIATION	EXPLANATION	
AA Medium of Recording	MEDIUM-OF-RECORD	See definition.	
DATA CODE CHARACTERISTICS	LENGTH 01	STRUCTURE A	
DATA ITEM NAME	ABBREVIATION	CODE	EXPLANATION
Card, Aperture	CD-APERT	V	A two-dimensional flat medium upon which data may be recorded by perforating in such a manner as to allow the mounting of a frame or frames of film or transparencies therein, and containing other information such as code punched retrieval information which is capable of being handled by mechanical means.
Card, Magnetic	CD-MAG	C	A two-dimensional flat medium upon which a magnetic coating has been deposited on one or both sides to be used for data recording, storage and retrieval.
Card, Perforated	CD-PERF	U	A two-dimensional flat medium on which data may be recorded in the form of punched holes or notches and is capable of being retrieved by mechanical means.
Card, Non-Mechanical	CD-NMEC	Y	A two-dimensional flat medium upon which data may be recorded by means of writing, typing, printing, drawing, etc., and which is not capable of being retrieved by mechanical means.
Core, Memory	CORD-MEM	S	A static storage device using magnetic properties of materials to store data. These may be ferrite core, thin film, plated wire, etc. Some commonly used names are magnetic core, memory rod and magnetic memory.
Disc	DISC	P	A flat circular plate used for data recording. Magnetic coatings may be used for data recording, or it may be a plastic device for mechanical recording and for phonograph records used in transcription devices.
Drum, Magnetic	DRUM-MAG	Q	A rotating cylinder coated with a magnetic material for storing data in the form of magnetized spots.

Page 1 of 2

DATA ELEMENT Medium of Recording

MIL-STD-482A
1 April 1974

CM-78 (cont'd)

APPENDIX II. *Interim data element and related features (cont'd)*

DATA ITEM NAME	ABBREVIATION	CODE	EXPLANATION
Film	FLM	K	Transparent material of various sizes, presenting images and background in color or as black and white. Negative film presents an image where light or transparent areas represent dark tones and dark or opaque areas represent the light tones. Positive film is a transparency showing an image composed of light and dark areas which correspond to the light and shade of the original image. Microfilm, microfiche and ultrafiche are included in the film generic code.
Manuscript	MS	M	A hand prepared, including typewritten, document.
Optical Storage	OP-STOR	D	A material upon which a pattern of holes have been imposed by piercing or burning, as by a laser, and can be reconstructed by interpretation of light transmittal and cathode ray tube storage.
Sheet	SHEET	H	A manufactured size of material, including paper, cloth and plastic, used for recording manually, for photocopy, photostat, printing, diazotype paper, dry electrostatic copy, blueprinting, gravure, engraving and lithography.
Tape	TAPE	T	A ribbon, strip or tape of any material for recording information. The tape is impregnated or coated with magnetic material on which information is recorded magnetically, or information is recorded by means of a punch process. Strips of tape with a magnetic oxide coating on one side used for recording data and used as data cells are included in the tape generic code.

Page 2 of 2

DATA ELEMENT Medium of Recording

II-97

APPENDIX III

	(63)	(17)	(46)
CONFIGURATION	STATUS	ACCOUNTING	REPORT (U)

BASE ⁽¹⁵⁾ LINE INDEX

AS OF 69 11 20

(51) A-7B	(4) CONFIGURATION ITEM IDENTIFICATION	(63) NOMENCLATURE	(17) MILITARY SPECIFICATION NUMBER (16)	(10) DATE	(37) MFG CODE
7051110	AIR VEHICLE	A-2729891444	670215	80378	
7051111	AIRCRAFT COMMANDER TRAINER	A-1910314947511	650710	97928	
7051112	POWER PLANT	PP-294992104-82	671112	00624	
7051113	FIRE CONTROL	F-531642574772	670312	70709	
7051114	NAVIGATION/GUIDANCE	N-1225968311	661230	73030	

FIGURE 1

MIL-STD-482A
1 April 1974

III-2

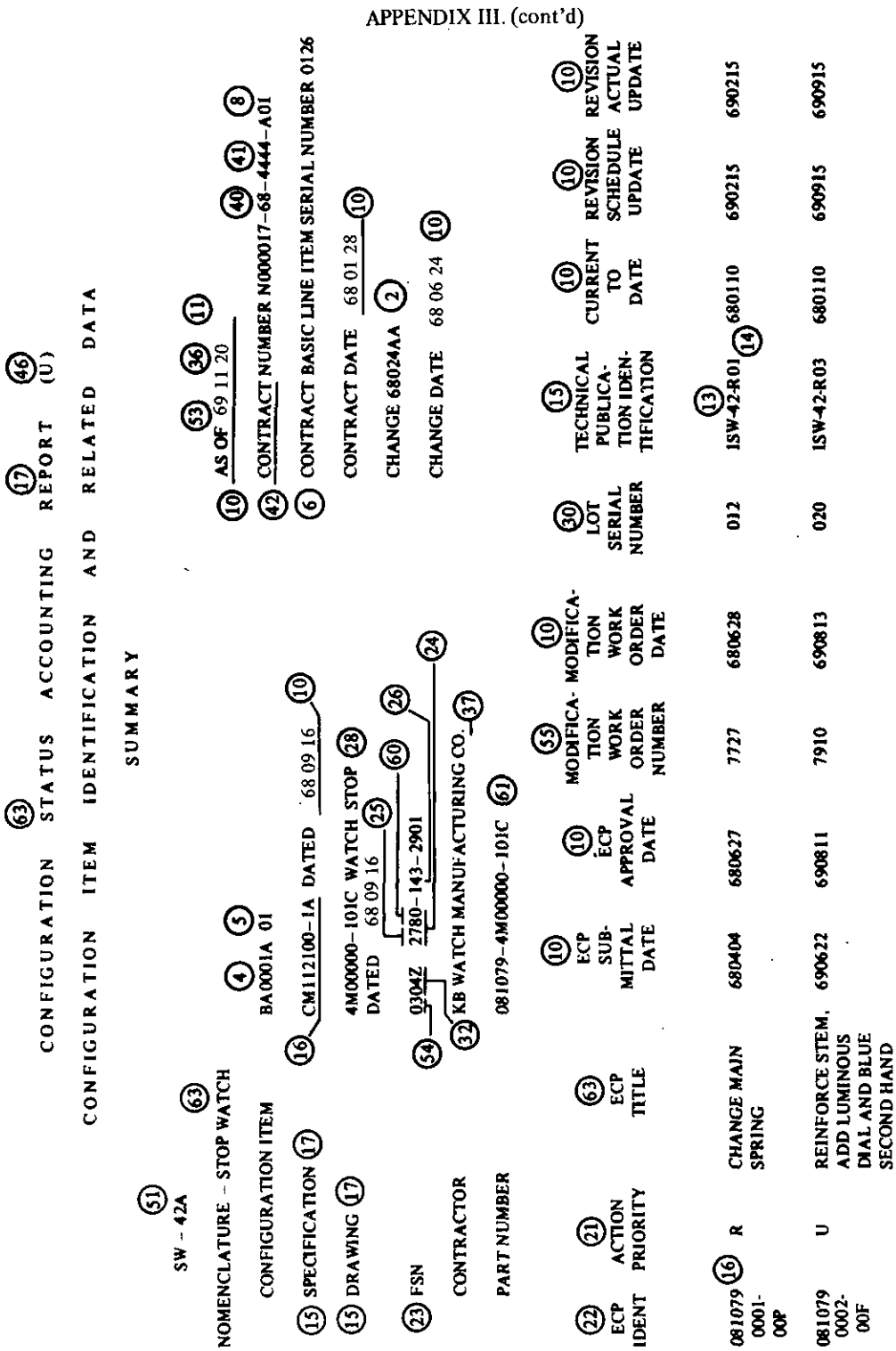


FIGURE 2

63
CONFIGURATION STATUS ACCOUNTING REPORT (U)
ECP INDEX

[illegible]

FIGURE 3

FIGURE 4

APPENDIX III (cont'd)

[illegible]

FIGURE 5

INSTRUCTIONS: In a continuing effort to make our standardization documents better, the DoD provides this form for use in submitting comments and suggestions for improvements. All users of military standardization documents are invited to provide suggestions. This form may be detached, folded along the lines indicated, taped along the loose edge (*DO NOT STAPLE*), and mailed. In block 5, be as specific as possible about particular problem areas such as wording which required interpretation, was too rigid, restrictive, loose, ambiguous, or was incompatible, and give proposed wording changes which would alleviate the problems. Enter in block 6 any remarks not related to a specific paragraph of the document. If block 7 is filled out, an acknowledgement will be mailed to you within 30 days to let you know that your comments were received and are being considered.

NOTE: This form may not be used to request copies of documents, nor to request waivers, deviations, or clarification of specification requirements on current contracts. Comments submitted on this form do not constitute or imply authorization to waive any portion of the referenced document(s) or to amend contractual requirements.

(Fold along this line)

(Fold along this line)

DEPARTMENT OF THE NAVY

OFFICIAL BUSINESS
PENALTY FOR PRIVATE USE \$300

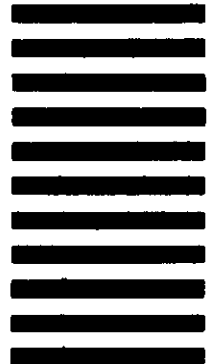
BUSINESS REPLY MAIL

FIRST CLASS PERMIT NO. 12503 WASHINGTON D. C.

POSTAGE WILL BE PAID BY THE DEPARTMENT OF THE NAVY

Commanding Officer
Naval Ordnance Station
Standardization/Documentation Division (Code 524
Indian Head, MD 20640

NO POSTAGE
NECESSARY
IF MAILED
IN THE
UNITED STATES



STANDARDIZATION DOCUMENT IMPROVEMENT PROPOSAL*(See Instructions - Reverse Side)***1. DOCUMENT NUMBER****2. DOCUMENT TITLE****3a. NAME OF SUBMITTING ORGANIZATION****4. TYPE OF ORGANIZATION (Mark one)**☐**VENDOR**☐**USER**☐**MANUFACTURER**☐**OTHER (Specify):** _____**b. ADDRESS (Street, City, State, ZIP Code)****5. PROBLEM AREAS****a. Paragraph Number and Wording:****b. Recommended Wording:****c. Reason/Rationale for Recommendation:****6. REMARKS****7a. NAME OF SUBMITTER (Last, First, MI) - Optional****b. WORK TELEPHONE NUMBER (Include Area Code) - Optional****c. MAILING ADDRESS (Street, City, State, ZIP Code) - Optional****8. DATE OF SUBMISSION (YYMMDD)**