

MIL-STD-273B
15 MARCH 1963

SUPERSEDING
MIL-STD-273A
28 FEBRUARY 1958

MILITARY STANDARD

GAGES, PLUG, THREAD SETTING, CLASS W,

FOR GO GAGES

UNIFIED STANDARD CLASSES 2A AND 3A AND

AMERICAN NATIONAL STANDARD CLASS 3 EXTERNAL THREADS



**FED. SUP CLASS
5220**

Mil-Std-273B
15 March 1963

DEPARTMENT OF DEFENSE
WASHINGTON 25, D.C.

Gages, Plug, Thread, Setting, Class W, for Go Gages Unified Standard
Classes 2A and 3A and American National Standard Class 3 External Threads

Mil-Std-273B

1. This standard has been approved by the Department of Defense and is mandatory for use by the Departments of the Army, the Navy, and the Air Force, effective 15 March 1963.

2. Recommended corrections, additions, or deletions should be addressed to Headquarters, DSA, Standardization Division, Washington 25, D. C.

Mil-Std-273B
15 MARCH 1963

CONTENTS

Paragraph	Page
1. Scope	1
2. Referenced Documents	1
3. Definitions	2
4. General Requirements	2
4.1.1 Tables I, II, and III - Tabulation of Design and Identification Data	2
4.1.2 Table IV - Listing of Mil-Std Part Numbers in Numerical Sequence	2
5. Procurement	3

FIGURES

Figure

1. Truncated Thread Setting Plug Gage (Taperlock Type)	4
2. Truncated Thread Setting Plug Gage (Trilock Type)	5

TABLES

Table

I. Tabulation of Design and Identification Data - Unified Standard Thread	7
II. Tabulation of Design and Identification Data - American National Standard Thread	51
III. Tabulation of Design and Identification Data - Special (UNS) Threads	65
IV. Listing of Mil-Std Part Numbers in Numerical Sequence	67

Mil-Std-273B
15 MARCH 1963

1. Scope

1.1 This standard covers pertinent design data and Mil-Std Part Numbers for American Gage Design Standard truncated thread setting plug gages for go gages for Unified Standard classes 2A and 3A and American National Standard class 3 external threads.

1.2 The same truncated thread setting plug gage is applied to classes 3 and 3A threads having the same nominal size and threads per inch.

1.3 The design data for truncated thread setting plug gages employs class "W" gage manufacturing tolerances in accordance with the U. S. Department of Commerce Handbook H28 "Screw-Thread Standards for Federal Services".

2. Referenced Documents

2.1 The issues of the following documents in effect on the date of invitation for bids form a part of this standard.

Standard

Mil-Std-10 Surface Roughness Waviness and Lay

(Application for copies should be addressed to the Superintendent of Documents, U. S. Government Printing Office, Washington 25, D. C.)

Specification

Mil-G-45654 Gages, Plug and Ring, Thread

(Copies of specifications should be obtained from the procuring activity or as directed by the contracting officer.)

Other Publications

U.S. Department of Commerce, National Bureau of Standards, Handbook H28 "Screw-Thread Standards for Federal Services".

U.S. Department of Commerce, Commercial Standard CS8, "Gage Blanks".

(Application for copies should be addressed to the Superintendent of Documents, U.S. Government Printing Office, Washington 25, D.C.)

Mil-Std-273B
15 MARCH 1963

3. Definitions

Not applicable

4. General Requirements

4.1 This standard contains four tables. Table I provides tabulated design data required for manufacture and inspection and is arranged in ascending size sequence according to thread designation for Unified Standard gages. Table II provides tabulated design data required for manufacture and inspection and is also arranged in ascending size sequence according to thread designation for American National Standard gages. Table III contains thread designations previously listed in the Standard series of Unified Standard thread (with the exception of 1.0000-14UNS-3A, NS-3 W (see 1.2) which was listed also in the American National Thread Series). They have been redesignated from Standard to special (UNS) threads and are listed herein for reference purposes. Table IV is a listing of Mil-Std Part Numbers in ascending numerical sequence, and is provided as an aid for locating the required design data contained in tables I, II, and III for any given Mil-Std Part Number.

4.1.1 Tables I, II, and III. Tabulation of Design and Identification Data.

4.1.1.1 Mil-Std Part Numbers and the corresponding thread designation for each truncated thread setting plug gage are listed in columns B and C respectively.

4.1.1.2 Column A lists the proper reference to the applicable figure (drawing) for each Mil-Std Part Number.

4.1.1.3 Columns B to D inclusive list the identification data for each Mil-Std Part Number and, when applied to the figure (drawing) referenced in column A, provide information for proper marking of the gages. It is not necessary to mark the "5220" indicated in column B on the gage. For example: Mil-Std Part Number 5220-749-8000 may be marked 7498000 on the gage.

4.1.1.4 Columns E to K inclusive list the design data for each Mil-Std Part Number and, when applied to the figure (drawing) referenced in column A, provide data required for manufacture and inspection.

4.1.1.5 The unit of measurement in columns D, E, F, G, H, and K is inches; column J is \pm minutes of a degree.

4.1.1.6 Design data, etc., not specifically covered in this standard shall conform to the latest issue of the documents referenced in paragraph 2 above.

4.1.2 Table IV. Listing of Mil-Std Part Numbers in Numerical Sequence.

Mil-Std-273B
15 MARCH 1963

4.1.2.1 All Mil-Std Part Numbers contained in this standard are listed in ascending numerical sequence in column A.

4.1.2.2 Column B references the page number in tables I, II, and III where the design and identification data for the applicable Mil-Std Part Number may be found.

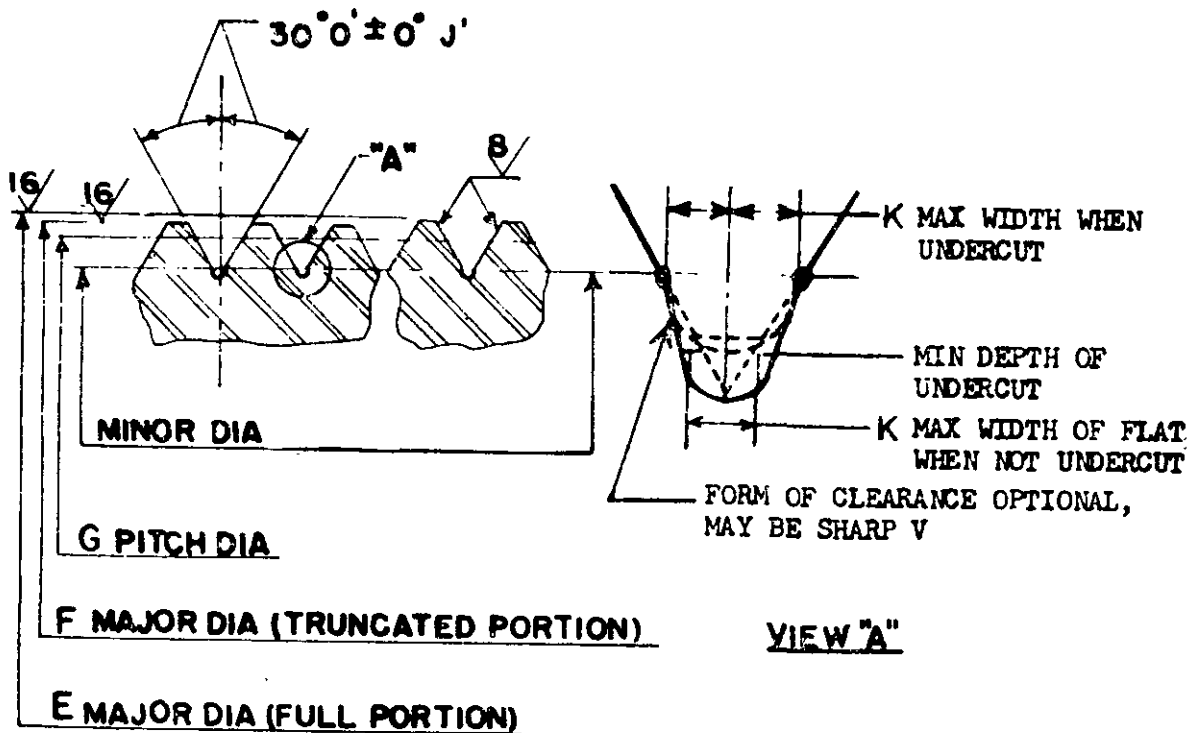
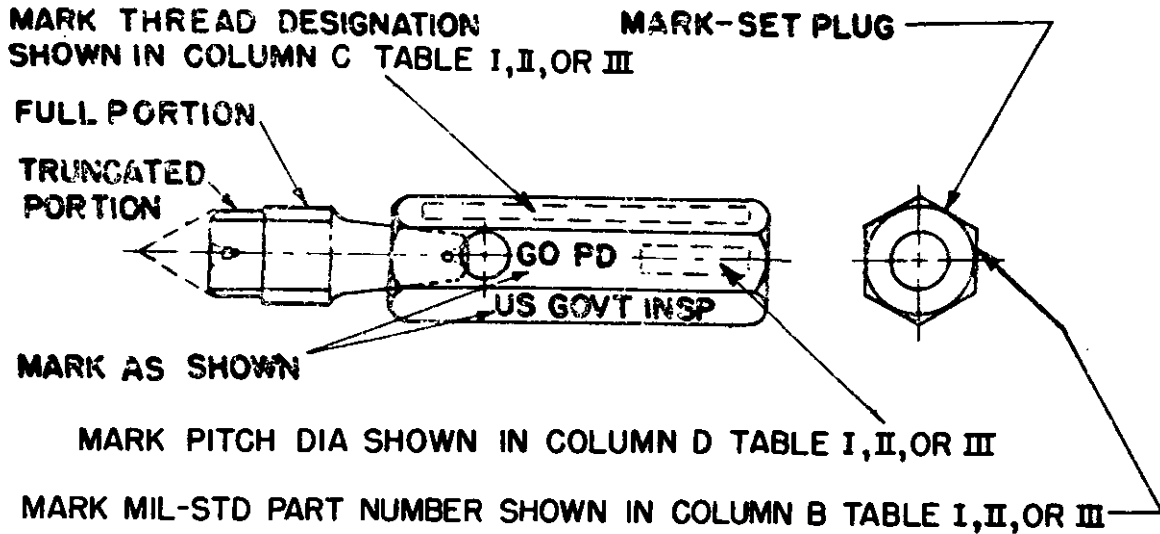
5. Procurement

5.1 The general requirements and tabulated design data contained in this standard are applicable for procurement purposes, as are the referenced manufacturing and inspection specifications.

5.2 Ordering Data. Procurement documents should specify the following:

- (a) Title, number, and date of this standard
- (b) Number of gages required and Mil-Std Part Number
- (c) Place of delivery for acceptance inspection

MIL-STD-273B
15 MARCH 1963



TOLERANCE ON LEAD H

FIGURE 1. Truncated thread setting plug gage (taper lock type)

MIL-STD-273B
15 MARCH 1968

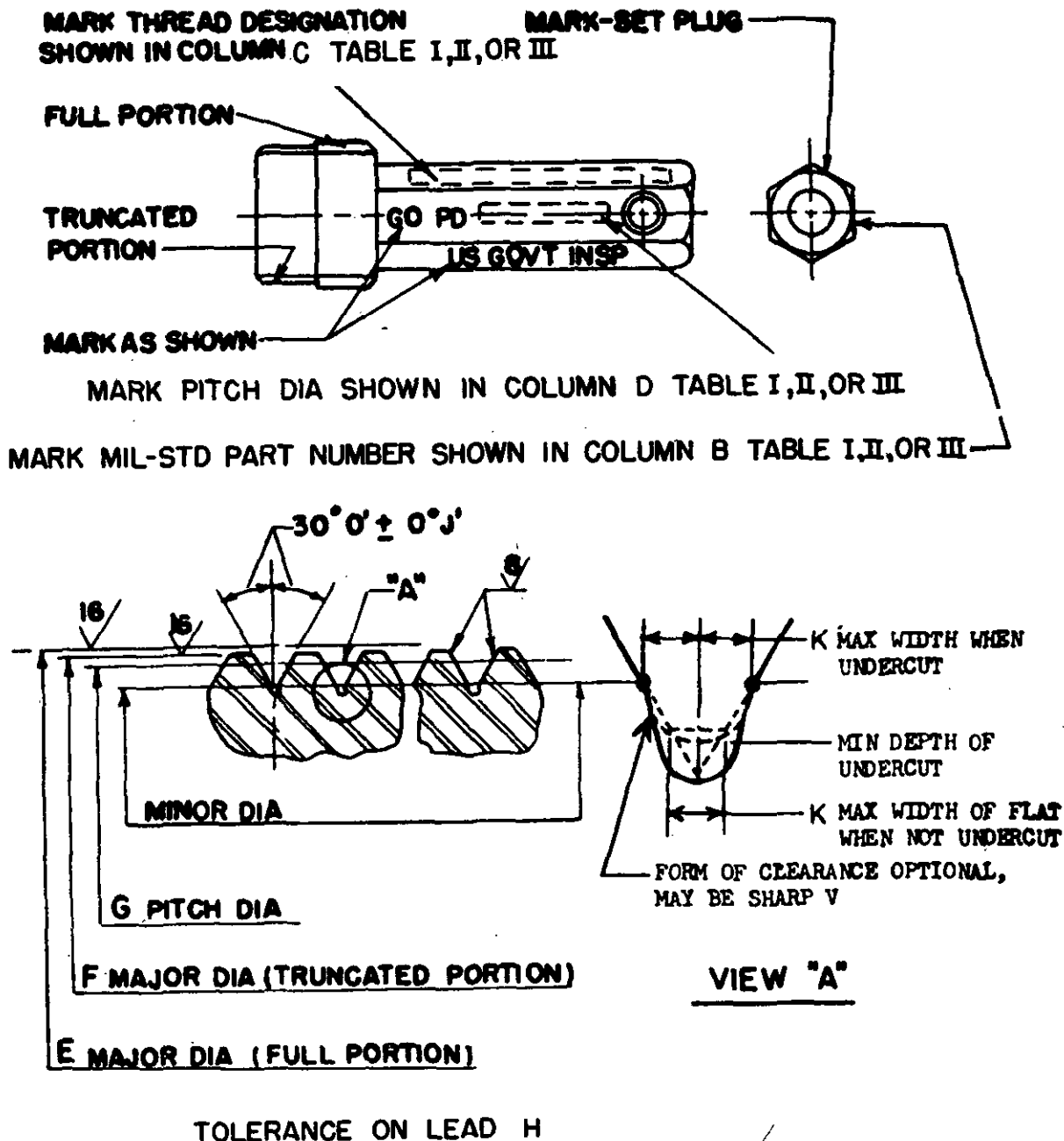


FIGURE 2. Truncated thread setting plug gage (trilock type)

MIL-STD-273B
15 MARCH 1963

Table I. Tabulation of Design and Identification Data - Unified Standard Thread

FIG. NO.	MARKING ON GAGE HANDLE			TRUNCATED THREAD SETTING PLUG GAGE DIMENSIONS					
	MIL-STD PART NUMBER	THREAD DESIGNATION	GO PITCH DIA	MAJOR DIA FULL PORTION	MAJOR DIA TRUNCATED PORTION	PITCH DIAMETER	TOL ON LEAD	HALF ANGLE TOL	ROOT CLEAR
A	B	C	D	E	F	G	H	J	K
1	5220-749-8000	(0) .060-80UNF-2A W	.0514	.0595 +.0003	.0561 -.0003	.0514 -.0001	.0001	20	.0016
1	5220-749-8001	(0) .060-80UNF-3A-3 W	.0519	.0600 +.0003	.0566 -.0003	.0519 -.0001	.0001	20	.0016
1	5220-749-8002	(1) .073-64UNC-2A W	.0623	.0724 +.0003	.0684 -.0003	.0623 -.0001	.0001	20	.0020
1	5220-749-8003	(1) .073-64UNC-3A-3 W	.0629	.0730 +.0003	.0690 -.0003	.0629 -.0001	.0001	20	.0020
1	5220-749-8004	(1) .073-72UNF-2A W	.0634	.0724 +.0003	.0687 -.0003	.0634 -.0001	.0001	20	.0017
1	5220-749-8005	(1) .073-72UNF-3A-3 W	.0640	.0730 +.0003	.0693 -.0003	.0640 -.0001	.0001	20	.0017
1	5220-749-8006	(2) .086-56UNC-2A W	.0738	.0854 +.0003	.0810 -.0003	.0738 -.0001	.0001	20	.0022
1	5220-749-8007	(2) .086-56UNC-3A-3 W	.0744	.0860 +.0003	.0816 -.0003	.0744 -.0001	.0001	20	.0022
1	5220-749-8008	(2) .086-64UNF-2A W	.0753	.0854 +.0003	.0814 -.0003	.0753 -.0001	.0001	20	.0020
1	5220-749-8009	(2) .086-64UNF-3A-3 W	.0759	.0860 +.0003	.0820 -.0003	.0759 -.0001	.0001	20	.0020
1	5220-749-8010	(3) .099-48UNC-2A W	.0848	.0983 +.0003	.0934 -.0003	.0848 -.0001	.0001	18	.0026
1	5220-749-8011	(3) .099-48UNC-3A-3 W	.0855	.0990 +.0003	.0941 -.0003	.0855 -.0001	.0001	18	.0026
1	5220-749-8012	(3) .099-56UNF-2A W	.0867	.0983 +.0003	.0939 -.0003	.0867 -.0001	.0001	20	.0022
1	5220-749-8013	(3) .099-56UNF-3A-3 W	.0874	.0990 +.0003	.0946 -.0003	.0874 -.0001	.0001	20	.0022
1	5220-749-8014	(4) .112-40UNC-2A W	.0950	.1112 +.0003	.1056 -.0003	.0950 -.0001	.0001	15	.0031

MIL-STD-273B
15 MARCH 1963

Table I. Tabulation of Design and Identification Data - Unified Standard Thread (Continued)

FIG. NO.	MARKING ON GAGE HANDLE			TRUNCATED THREAD SETTING PLUG GAGE DIMENSIONS					
	MIL-STD PART NUMBER	THREAD DESIGNATION	GO PITCH DIA	MAJOR DIA FULL PORTION	MAJOR DIA TRUNCATED PORTION	PITCH DIAMETER	TOL ON LEAD	HALF ANGLE TOL	ROOT CLEAR
A	B	C	D	E	F	G	H	J	K
1	5220-749-8015	(4) .112-40UNC-3A-3 W	.0958	.1120 +.0003	.1064 -.0003	.0958 -.0001	.0001	15	.0031
1	5220-749-8016	(4) .112-48UNF-2A W	.0978	.1113 +.0003	.1064 -.0003	.0978 -.0001	.0001	18	.0026
1	5220-749-8017	(4) .112-48UNF-3A-3 W	.0985	.1120 +.0003	.1071 -.0003	.0985 -.0001	.0001	18	.0026
1	5220-749-8018	(5) .125-40UNC-2A W	.1080	.1242 +.0003	.1186 -.0003	.1080 -.0001	.0001	15	.0031
1	5220-749-8019	(5) .125-40UNC-3A-3 W	.1088	.1250 +.0003	.1194 -.0003	.1088 -.0001	.0001	15	.0031
1	5220-749-8020	(5) .125-44UNF-2A W	.1095	.1243 +.0003	.1191 -.0003	.1095 -.0001	.0001	15	.0028
1	5220-749-8021	(5) .125-44UNF-3A-3 W	.1102	.1250 +.0003	.1198 -.0003	.1102 -.0001	.0001	15	.0028
1	5220-749-8022	(6) .138-32UNC-2A W	.1169	.1372 +.0003	.1307 -.0003	.1169 -.0001	.0001	12	.0039
1	5220-749-8023	(6) .138-32UNC-3A-3 W	.1177	.1380 +.0003	.1315 -.0003	.1177 -.0001	.0001	12	.0039
1	5220-749-8024	(6) .138-40UNF-2A W	.1210	.1372 +.0003	.1316 -.0003	.1210 -.0001	.0001	15	.0031
1	5220-749-8025	(6) .138-40UNF-3A-3 W	.1218	.1380 +.0003	.1324 -.0003	.1218 -.0001	.0001	15	.0031
1	5220-749-8026	(8) .164-32UNC-2A W	.1428	.1631 +.0003	.1566 -.0003	.1428 -.0001	.0001	12	.0039
1	5220-749-8027	(8) .164-32UNC-3A-3 W	.1437	.1640 +.0003	.1575 -.0003	.1437 -.0001	.0001	12	.0039
1	5220-749-8028	(8) .164-36UNF-2A W	.1452	.1632 +.0003	.1572 -.0003	.1452 -.0001	.0001	12	.0035
1	5220-749-8029	(8) .164-36UNF-3A-3 W	.1460	.1640 +.0003	.1580 -.0003	.1460 -.0001	.0001	12	.0035

ORDBA Form 46-1435, (01) Rev. 15 Mar. 61

MIL-STD-273B
15 MARCH 1963

Table I. Tabulation of Design and Identification Data - Unified Standard Thread (Continued)

FIG. NO.	MARKING ON GAGE HANDLE			TRUNCATED THREAD SETTING PLUG GAGE DIMENSIONS					
	MIL-STD PART NUMBER	THREAD DESIGNATION	GO PITCH DIA	MAJOR DIA FULL PORTION	MAJOR DIA TRUNCATED PORTION	PITCH DIAMETER	TOL ON LEAD	HALF ANGLE TOL	ROOT CLEAR
A	B	C	D	E	F	G	H	J	K
1	5220-749-8030	(10) .190-24UNC-2A W	.1619	.1890 +.0005	.1811 -.0005	.1619 -.0001	.00015	8	.0052
1	5220-749-8031	(10) .190-24UNC-3A-3 W	.1629	.1900 +.0005	.1821 -.0005	.1629 -.0001	.00015	8	.0052
1	5220-749-8032	(10) .190-32UNF-2A W	.1688	.1891 +.0003	.1826 -.0003	.1688 -.0001	.0001	12	.0039
1	5220-749-8033	(10) .190-32UNF-3A-3 W	.1697	.1900 +.0003	.1835 -.0003	.1697 -.0001	.0001	12	.0039
1	5220-749-8034	(12) .216-24UNC-2A W	.1879	.2150 +.0005	.2071 -.0005	.1879 -.0001	.00015	8	.0052
1	5220-749-8035	(12) .216-24UNC-3A-3 W	.1889	.2160 +.0005	.2081 -.0005	.1889 -.0001	.00015	8	.0052
1	5220-749-8036	(12) .216-28UNF-2A W	.1918	.2150 +.0005	.2079 -.0005	.1918 -.0001	.00015	8	.0045
1	5220-749-8037	(12) .216-28UNF-3A-3 W	.1928	.2160 +.0005	.2089 -.0005	.1928 -.0001	.00015	8	.0045
1	5220-751-6780	(12) .216-32UNEF-2A W	.1948	.2151 +.0003	.2086 -.0003	.1948 -.0001	.0001	12	.0039
1	5220-751-6781	(12) .216-32UNEF-3A-3 W	.1957	.2160 +.0003	.2095 -.0003	.1957 -.0001	.0001	12	.0039
1	5220-749-8038	.2500-20UNC-2A W	.2164	.2489 +.0005	.2399 -.0005	.2164 -.0001	.00015	8	.0062
1	5220-749-8039	.2500-20UNC-3A-3 W	.2175	.2500 +.0005	.2410 -.0005	.2175 -.0001	.00015	8	.0062
1	5220-749-8040	.2500-28UNF-2A W	.2258	.2490 +.0005	.2419 -.0005	.2258 -.0001	.00015	8	.0045
1	5220-749-8041	.2500-28UNF-3A-3 W	.2268	.2500 +.0005	.2429 -.0005	.2268 -.0001	.00015	8	.0045
1	5220-749-8042	.2500-32UNEF-2A W	.2287	.2490 +.0003	.2425 -.0003	.2287 -.0001	.0001	12	.0039

MIL-STD-273B

15 MARCH 1963

Table I. Tabulation of Design and Identification Data - Unified Standard Thread (Continued)

FIG. NO.	MARKING ON GAGE HANDLE			TRUNCATED THREAD SETTING PLUG GAGE DIMENSIONS					
	MIL-STD PART NUMBER	THREAD DESIGNATION	GO PITCH DIA	MAJOR DIA FULL PORTION	MAJOR DIA TRUNCATED PORTION	PITCH DIAMETER	TOL ON LEAD	HALF ANGLE TOL	ROOT CLEAR
A	B	C	D	E	F	G	H	J	K
1	5220-749-8043	.2500-32UNEF-3A-3 W	.2297	.2500 +.0003	.2435 -.0003	.2297 -.0001	.0001	12	.0039
1	5220-749-8044	.3125-18UNC-2A W	.2752	.3113 +.0005	.3016 -.0005	.2752 -.0001	.00015	8	.0069
1	5220-749-8045	.3125-18UNC-3A-3 W	.2764	.3125 +.0005	.3028 -.0005	.2764 -.0001	.00015	8	.0069
1	7518931	.3125-20UN-2A W	.2788	.3113 +.0005	.3023 -.0005	.2788 -.0001	.00015	8	.0062
1	7518932	.3125-20UN-3A W	.2800	.3125 +.0005	.3035 -.0005	.2800 -.0001	.00015	8	.0062
1	5220-749-8046	.3125-24UNF-2A W	.2843	.3114 +.0005	.3035 -.0005	.2843 -.0001	.00015	8	.0052
1	5220-749-8047	.3125-24UNF-3A-3 W	.2854	.3125 +.0005	.3046 -.0005	.2854 -.0001	.00015	8	.0052
1	7518933	.3125-28UN-2A W	.2883	.3115 +.0005	.3044 -.0005	.2883 -.0001	.00015	8	.0045
1	7518934	.3125-28UN-3A W	.2893	.3125 +.0005	.3054 -.0005	.2893 -.0001	.00015	8	.0045
1	5220-749-8048	.3125-32UNEF-2A W	.2912	.3115 +.0003	.3050 -.0003	.2912 -.0001	.0001	12	.0039
1	5220-749-8049	.3125-32UNEF-3A-3 W	.2922	.3125 +.0003	.3060 -.0003	.2922 -.0001	.0001	12	.0039
1	5220-749-8050	.3750-16UNC-2A W	.3331	.3737 +.0006	.3632 -.0006	.3331 -.0001	.00015	8	.0078
1	5220-749-8051	.3750-16UNC-3A-3 W	.3344	.3750 +.0006	.3645 -.0006	.3344 -.0001	.00015	8	.0078
1	7518935	.3750-20UN-2A W	.3413	.3738 +.0005	.3648 -.0005	.3413 -.0001	.00015	8	.0062
1	7518936	.3750-20UN-3A W	.3425	.3750 +.0005	.3660 -.0005	.3425 -.0001	.00015	8	.0062

MIL-STD-273B
15 MARCH 1963

Table I. Tabulation of Design and Identification Data - Unified Standard Thread (Continued)

FIG. NO.	MARKING ON GAGE HANDLE			TRUNCATED THREAD SETTING PLUG GAGE DIMENSIONS					
	MIL-STD PART NUMBER	THREAD DESIGNATION	GO PITCH DIA	MAJOR DIA FULL PORTION	MAJOR DIA TRUNCATED PORTION	PITCH DIAMETER	TOL ON LEAD	HALF ANGLE TOL	ROOT CLEAR
A	B	C	D	E	F	G	H	J	K
1	5220-749-8052	.3750-24UNF-2A W	.3468	.3739 +.0005	.3660 -.0005	.3468 -.0001	.00015	8	.0052
1	5220-749-8053	.3750-24UNF-3A-3 W	.3479	.3750 +.0005	.3671 -.0005	.3479 -.0001	.00015	8	.0052
1	7518937	.3750-28UN-2A W	.3507	.3739 +.0005	.3668 -.0005	.3507 -.0001	.00015	8	.0045
1	7518938	.3750-28UN-3A W	.3518	.3750 +.0005	.3679 -.0005	.3518 -.0001	.00015	8	.0045
1	5220-749-8054	.3750-32UNEF-2A W	.3537	.3740 +.0003	.3675 -.0003	.3537 -.0001	.0001	12	.0039
1	5220-749-8055	.3750-32UNEF-3A-3 W	.3547	.3750 +.0003	.3685 -.0003	.3547 -.0001	.0001	12	.0039
1	5220-749-8056	.4375-14UNC-2A W	.3897	.4361 +.0006	.4246 -.0006	.38970-.00015	.0002	6	.0089
1	5220-749-8057	.4375-14UNC-3A-3 W	.3911	.4375 +.0006	.4260 -.0006	.39110-.00015	.0002	6	.0089
1	7518939	.4375-16UN-2A W	.3955	.4361 +.0006	.4256 -.0006	.3955 -.0001	.00015	8	.0078
1	7518940	.4375-16UN-3A W	.3969	.4375 +.0006	.4270 -.0006	.3969 -.0001	.00015	8	.0078
1	5220-749-8058	.4375-20UNF-2A W	.4037	.4362 +.0005	.4272 -.0005	.4037 -.0001	.00015	8	.0062
1	5220-749-8059	.4375-20UNF-3A-3 W	.4050	.4375 +.0005	.4285 -.0005	.4050 -.0001	.00015	8	.0062
1	5220-749-8060	.4375-28UNEF-2A W	.4132	.4364 +.0005	.4293 -.0005	.4132 -.0001	.00015	8	.0045
1	5220-749-8061	.4375-28UNEF-3A-3 W	.4143	.4375 +.0005	.4304 -.0005	.4143 -.0001	.00015	8	.0045
1	7518941	.4375-32UN-2A W	.4162	.4365 +.0003	.4300 -.0003	.4162 -.0001	.0001	12	.0039

MIL-STD-275B

15 MARCH 1963

Table I. Tabulation of Design and Identification Data - Unified Standard Thread (Continued)

FIG. NO.	MARKING ON GAGE HANDLE			TRUNCATED THREAD SETTING PLUG GAGE DIMENSIONS					
	MIL-STD PART NUMBER	THREAD DESIGNATION	GO PITCH DIA	MAJOR DIA FULL PORTION	MAJOR DIA TRUNCATED PORTION	PITCH DIAMETER	TOL ON LEAD	HALF ANGLE TOL	ROOT CLEAR
A	B	C	D	E	F	G	H	J	K
1	7518942	.4375-32UN-3A W	.4172	.4375 +.0003	.4310 -.0003	.4172 -.0001	.0001	12	.0039
1	5220-749-8063	.5000-13UNC-2A W	.4485	.4985 +.0006	.4863 -.0006	.44850 -.00015	.0002	6	.0096
1	5220-749-8064	.5000-13UNC-3A-3 W	.4500	.5000 +.0006	.4878 -.0006	.45000 -.00015	.0002	6	.0096
1	7518943	.5000-16UN-2A W	.4580	.4986 +.0006	.4881 -.0006	.4580 -.0001	.00015	8	.0078
1	7518944	.5000-16UN-3A W	.4594	.5000 +.0006	.4895 -.0006	.4594 -.0001	.00015	8	.0078
1	5220-749-8065	.5000-20UNF-2A W	.4662	.4987 +.0005	.4897 -.0005	.4662 -.0001	.00015	8	.0062
1	5220-749-8066	.5000-20UNF-3A-3 W	.4675	.5000 +.0005	.4910 -.0005	.4675 -.0001	.00015	8	.0062
1	5220-749-8067	.5000-28UNEF-2A W	.4757	.4989 +.0005	.4918 -.0005	.4757 -.0001	.00015	8	.0045
1	5220-749-8068	.5000-28UNEF-3A-3 W	.4768	.5000 +.0005	.4929 -.0005	.4768 -.0001	.00015	8	.0045
1	7518945	.5000-32UN-2A W	.4787	.4990 +.0003	.4925 -.0003	.4787 -.0001	.0001	12	.0039
1	7518946	.5000-32UN-3A W	.4797	.5000 +.0003	.4935 -.0003	.4797 -.0001	.0001	12	.0039
1	5220-749-8069	.5625-12UNC-2A W	.5068	.5609 +.0006	.5480 -.0006	.5068 -.0002	.0002	6	.0104
1	5220-749-8070	.5625-12UNC-3A-3 W	.5084	.5625 +.0006	.5496 -.0006	.5084 -.0002	.0002	6	.0104
1	7518947	.5625-16UN-2A W	.5205	.5611 +.0006	.5506 -.0006	.5205 -.0002	.00015	8	.0078
1	7518948	.5625-16UN-3A W	.5219	.5625 +.0006	.5520 -.0006	.5219 -.0002	.00015	8	.0078

MIL-STD-273B
15 MARCH 1963

Table I. Tabulation of Design and Identification Data - Unified Standard Thread (Continued)

FIG. NO.	MARKING ON GAGE HANDLE			TRUNCATED THREAD SETTING PLUG GAGE DIMENSIONS					
	MIL-STD PART NUMBER	THREAD DESIGNATION	GO PITCH DIA	MAJOR DIA FULL PORTION	MAJOR DIA TRUNCATED PORTION	PITCH DIAMETER	TOL ON LEAD	HALF ANGLE TOL	ROOT CLEAR
A	B	C	D	E	F	G	H	J	K
1	5220-749-8071	.5625-18UNF-2A W	.5250	.5611 +.0005	.5514 -.0005	.52500 -.00015	.00015	8	.0069
1	5220-749-8072	.5625-18UNF-3A-3 W	.5264	.5625 +.0005	.5528 -.0005	.52640 -.00015	.00015	8	.0069
1	7518949	.5625-20UN-2A W	.5287	.5612 +.0005	.5522 -.0005	.52870 -.00015	.00015	8	.0062
1	7518950	.5625-20UN-3A W	.5300	.5625 +.0005	.5535 -.0005	.53000 -.00015	.00015	8	.0062
1	5220-749-8073	.5625-24UNEF-2A W	.5342	.5613 +.0005	.5534 -.0005	.53420 -.00015	.00015	8	.0052
1	5220-749-8074	.5625-24UNEF-3A-3 W	.5354	.5625 +.0005	.5546 -.0005	.53540 -.00015	.00015	8	.0052
1	7518951	.5625-28UN-2A W	.5382	.5614 +.0005	.5543 -.0005	.53820 -.00015	.00015	8	.0045
1	7518952	.5625-28UN-3A W	.5393	.5625 +.0005	.5554 -.0005	.53930 -.00015	.00015	8	.0045
1	7518953	.5625-32UN-2A W	.5412	.5615 +.0005	.5550 -.0005	.54120 -.00015	.00015	12	.0039
1	7518954	.5625-32UN-3A W	.5422	.5625 +.0005	.5560 -.0005	.54220 -.00015	.00015	12	.0039
1	5220-749-8075	.6250-11UNC-2A W	.5644	.6234 +.0006	.6097 -.0006	.5644 -.0002	.0002	6	.0114
1	5220-749-8076	.6250-11UNC-3A-3 W	.5660	.6250 +.0006	.6113 -.0006	.5660 -.0002	.0002	6	.0114
1	5220-751-6783	.6250-12UN-2A W	.5693	.6234 +.0006	.6105 -.0006	.5693 -.0002	.0002	6	.0104
1	5220-749-8077	.6250-12UN-3A-3 W	.5079	.6250 +.0006	.6121 -.0006	.5709 -.0002	.0002	6	.0104
1	7518955	.6250-16UN-2A W	.5830	.6236 +.0006	.6131 -.0006	.5830 -.0002	.00015	8	.0078

MIL-STD-273B
15 MARCH 1963

Table I. Tabulation of Design and Identification Data - Unified Standard Thread (Continued)

FIG. NO.	MARKING ON GAGE HANDLE			TRUNCATED THREAD SETTING PLUG GAGE DIMENSIONS					
	MIL-STD PART NUMBER	THREAD DESIGNATION	GO PITCH DIA	MAJOR DIA FULL PORTION	MAJOR DIA TRUNCATED PORTION	PITCH DIAMETER	TOL ON LEAD	HALF ANGLE TOL	ROOT CLEAR
A	B	C	D	E	F	G	H	J	K
1	7518956	.6250-16UN-3A W	.5844	.6250 +.0006	.6145 -.0006	.5844 -.0002	.00015	8	.0078
1	5220-749-8078	.6250-18UNF-2A W	.5875	.6236 +.0005	.6139 -.0005	.58750 -.00015	.00015	8	.0069
1	5220-749-8079	.6250-18UNF-3A-3 W	.5889	.6250 +.0005	.6153 -.0005	.58890 -.00015	.00015	8	.0069
1	7518957	.6250-20UN-2A W	.5912	.6237 +.0005	.6147 -.0005	.59120 -.00015	.00015	8	.0062
1	7518958	.6250-20UN-3A W	.5925	.6250 +.0005	.6160 -.0005	.59250 -.00015	.00015	8	.0062
1	5220-749-8080	.6250-24UNEF-2A W	.5967	.6238 +.0005	.6159 -.0005	.59670 -.00015	.00015	8	.0052
1	5220-749-8081	.6250-24UNEF-3A-3 W	.5979	.6250 +.0005	.6171 -.0005	.59790 -.00015	.00015	8	.0052
1	7518959	.6250-28UN-2A W	.6007	.6239 +.0005	.6168 -.0005	.60070 -.00015	.00015	8	.0045
1	7518960	.6250-28UN-3A W	.6018	.6250 +.0005	.6179 -.0005	.60180 -.00015	.00015	8	.0045
1	7518961	.6250-32UN-2A W	.6036	.6239 +.0005	.6174 -.0005	.60360 -.00015	.00015	12	.0039
1	7518962	.6250-32UN-3A W	.6047	.6250 +.0005	.6185 -.0005	.60470 -.00015	.00015	12	.0039
1	5220-751-6784	.6875-12UN-2A W	.6318	.6859 +.0006	.6730 -.0006	.6318 -.0002	.0002	6	.0104
1	5220-749-8082	.6875-12UN-3A-3 W	.6334	.6875 +.0006	.6746 -.0006	.6334 -.0002	.0002	6	.0104
1	7518963	.6875-16UN-2A W	.6455	.6861 +.0006	.6756 -.0006	.6455 -.0002	.00015	8	.0078
1	7518964	.6875-16UN-3A W	.6469	.6875 +.0006	.6770 -.0006	.6469 -.0002	.00015	8	.0078

MIL-STD-273B
15 MARCH 1963

Table I. Tabulation of Design and Identification Data - Unified Standard Thread (Continued)

FIG. NO.	MARKING ON GAGE HANDLE			TRUNCATED THREAD SETTING PLUG GAGE DIMENSIONS					
	MIL-STD PART NUMBER	THREAD DESIGNATION	GO PITCH DIA	MAJOR DIA FULL PORTION	MAJOR DIA TRUNCATED PORTION	PITCH DIAMETER	TOL ON LEAD	HALF ANGLE TOL	ROOT CLEAR
A	B	C	D	E	F	G	H	J	K
1	7518965	.6875-20UN-2A W	.6537	.6862 +.0005	.6772 -.0005	.65370 -.00015	.00015	8	.0062
1	7518966	.6875-20UN-3A W	.6550	.6875 +.0005	.6785 -.0005	.65500 -.00015	.00015	8	.0062
1	5220-749-8083	.6875-24UNEF-2A W	.6592	.6863 +.0005	.6784 -.0005	.65920 -.00015	.00015	8	.0052
1	5220-749-8084	.6875-24UNEF-3A-3 W	.6604	.6875 +.0005	.6796 -.0005	.66040 -.00015	.00015	8	.0052
1	7518967	.6875-28UN-2A W	.6632	.6864 +.0005	.6793 -.0005	.66320 -.00015	.00015	8	.0045
1	7518968	.6875-28UN-3A W	.6643	.6875 +.0005	.6804 -.0005	.66430 -.00015	.00015	8	.0045
1	7518969	.6875-32UN-2A W	.6661	.6864 +.0005	.6799 -.0005	.66610 -.00015	.00015	12	.0039
1	7518970	.6875-32UN-3A W	.6672	.6875 +.0005	.6810 -.0005	.66720 -.00015	.00015	12	.0039
1	5220-749-8085	.7500-10UNC-2A W	.6832	.7482 +.0006	.7336 -.0006	.6832 -.0002	.00025	6	.0125
1	5220-749-8086	.7500-10UNC-3A-3 W	.6850	.7500 +.0006	.7354 -.0006	.6850 -.0002	.00025	6	.0125
1	5220-751-6785	.7500-12UN-2A W	.6942	.7483 +.0006	.7354 -.0006	.6942 -.0002	.0002	6	.0104
1	5220-749-8087	.7500-12UN-3A-3 W	.6959	.7500 +.0006	.7371 -.0006	.6959 -.0002	.0002	6	.0104
1	5220-749-8088	.7500-16UNF-2A W	.7079	.7485 +.0006	.7380 -.0006	.7079 -.0002	.00015	8	.0078
1	5220-749-8089	.7500-16UNF-3A-3 W	.7094	.7500 +.0006	.7395 -.0006	.7094 -.0002	.00015	8	.0078
1	5220-749-8090	.7500-20UNEF-2A W	.7162	.7487 +.0005	.7397 -.0005	.71620 -.00015	.00015	8	.0062

MIL-STD-273B
15 MARCH 1963

Table I. Tabulation of Design and Identification Data - Unified Standard Thread (Continued)

FIG. NO.	MARKING ON GAGE HANDLE			TRUNCATED THREAD SETTING PLUG GAGE DIMENSIONS					
	MIL-STD PART NUMBER	THREAD DESIGNATION	GO PITCH DIA	MAJOR DIA FULL PORTION	MAJOR DIA TRUNCATED PORTION	PITCH DIAMETER	TOL ON LEAD	HALF ANGLE TOL	ROOT CLEAR
A	B	C	D	E	F	G	H	J	K
1	5220-749-8091	.7500-20UNEF-3A-3 W	.7175	.7500 +.0005	.7410 -.0005	.71750 -.00015	.00015	8	.0062
1	7518971	.7500-28UN-2A W	.7256	.7488 +.0005	.7417 -.0005	.72560 -.00015	.00015	8	.0045
1	7518972	.7500-28UN-3A W	.7268	.7500 +.0005	.7429 -.0005	.72680 -.00015	.00015	8	.0045
1	7518973	.7500-32UN-2A W	.7286	.7489 +.0005	.7424 -.0005	.72860 -.00015	.00015	12	.0039
1	7518974	.7500-32UN-3A W	.7297	.7500 +.0005	.7435 -.0005	.72970 -.00015	.00015	12	.0039
1	5220-751-6786	.8125-12UN-2A W	.7567	.8108 +.0006	.7979 -.0006	.7567 -.0002	.0002	6	.0104
1	5220-749-8092	.8125-12UN-3A-3 W	.7584	.8125 +.0006	.7996 -.0006	.7584 -.0002	.0002	6	.0104
1	5220-751-6787	.8125-16UN-2A W	.7704	.8110 +.0006	.8005 -.0006	.7704 -.0002	.00015	8	.0078
1	5220-749-8093	.8125-16UN-3A-3 W	.7719	.8125 +.0006	.8020 -.0006	.7719 -.0002	.00015	8	.0078
1	5220-749-8094	.8125-20UNEF-2A W	.7787	.8112 +.0005	.8022 -.0005	.77870 -.00015	.00015	8	.0062
1	5220-749-8095	.8125-20UNEF-3A-3 W	.7800	.8125 +.0005	.8035 -.0005	.78000 -.00015	.00015	8	.0062
1	7518975	.8125-28UN-2A W	.7881	.8113 +.0005	.8042 -.0005	.78810 -.00015	.00015	8	.0045
1	7518976	.8125-28UN-3A W	.7893	.8125 +.0005	.8054 -.0005	.78930 -.00015	.00015	8	.0045
1	7518977	.8125-32UN-2A W	.7911	.8114 +.0005	.8049 -.0005	.79110 -.00015	.00015	12	.0039
1	7518978	.8125-32UN-3A W	.7922	.8125 +.0005	.8060 -.0005	.79220 -.00015	.00015	12	.0039

MIL-STD-273B
15 MAR 1963

Table I. Tabulation of Design and Identification Data - Unified Standard Thread (Continued)

FIG. NO.	MARKING ON GAGE HANDLE			TRUNCATED THREAD SETTING PLUG GAGE DIMENSIONS					
	MIL-STD PART NUMBER	THREAD DESIGNATION	GO PITCH DIA	MAJOR DIA FULL PORTION	MAJOR DIA TRUNCATED PORTION	PITCH DIAMETER	TOL ON LEAD	HALF ANGLE TOL	ROOT CLEAR
A	B	C	D	E	F	G	H	J	K
1	5220-749-8096	.8750-9UNC-2A W	.8009	.8731 +.0007	.8573 -.0007	.8009 -.0002	.00025	6	.0139
1	5220-749-8097	.8750-9UNC-3A-3 W	.8028	.8750 +.0007	.8592 -.0007	.8028 -.0002	.00025	6	.0139
1	5220-751-6788	.8750-12UN-2A W	.8192	.8733 +.0006	.8604 -.0006	.8192 -.0002	.0002	6	.0104
1	5220-749-8098	.8750-12UN-3A-3 W	.8209	.8750 +.0006	.8621 -.0006	.8209 -.0002	.0002	6	.0104
1	5220-749-8099	.8750-14UNF-2A W	.8270	.8734 +.0006	.8619 -.0006	.8270 -.0002	.0002	6	.0089
1	5220-749-8100	.8750-14UNF-3A-3 W	.8286	.8750 +.0006	.8635 -.0006	.8286 -.0002	.0002	6	.0089
1	5220-751-6789	.8750-16UN-2A W	.8329	.8735 +.0006	.8630 -.0006	.8329 -.0002	.00015	8	.0078
1	5220-749-8101	.8750-16UN-3A-3 W	.8344	.8750 +.0006	.8645 -.0006	.8344 -.0002	.00015	8	.0078
1	5220-749-8102	.8750-20UNEF-2A W	.8412	.8737 +.0005	.8647 -.0005	.84120 -.00015	.00015	8	.0062
1	5220-749-8103	.8750-20UNEF-3A-3 W	.8425	.8750 +.0005	.8660 -.0005	.84250 -.00015	.00015	8	.0062
1	7518979	.8750-28UN-2A W	.8506	.8738 +.0005	.8667 -.0005	.85060 -.00015	.00015	8	.0045
1	7518980	.8750-28UN-3A W	.8518	.8750 +.0005	.8679 -.0005	.85180 -.00015	.00015	8	.0045
1	7518981	.8750-32UN-2A W	.8536	.8739 +.0005	.8674 -.0005	.85360 -.00015	.00015	12	.0039
1	7518982	.8750-32UN-3A W	.8547	.8750 +.0005	.8685 -.0005	.85470 -.00015	.00015	12	.0039
1	5220-751-6790	.9375-12UN-2A W	.8817	.9358 +.0006	.9229 -.0006	.8817 -.0002	.0002	6	.0104

MIL-STD-273B
15 MARCH 1963

Table I. Tabulation of Design and Identification Data - Unified Standard Thread (Continued)

FIG. NO.	MARKING ON GAGE HANDLE			TRUNCATED THREAD SETTING PLUG GAGE DIMENSIONS					
	MIL-STD PART NUMBER	THREAD DESIGNATION	GO PITCH DIA	MAJOR DIA FULL PORTION	MAJOR DIA TRUNCATED PORTION	PITCH DIAMETER	TOL ON LEAD	HALF ANGLE TOL	ROOT CLEAR
A	B	C	D	E	F	G	H	J	K
1	5220-749-8104	.9375-12UN-3A-3 W	.8834	.9375 +.0005	.9246 -.0006	.8834 -.0002	.0002	6	.0104
1	5220-751-6791	.9375-16UN-2A W	.8954	.9360 +.0006	.9255 -.0006	.8954 -.0002	.00015	8	.0078
1	5220-749-8105	.9375-16UN-3A-3 W	.8969	.9375 +.0006	.9270 -.0006	.8969 -.0002	.00015	8	.0078
1	5220-749-8106	.9375-20UNEF-2A W	.9036	.9361 +.0005	.9271 -.0005	.90360 -.00015	.00015	8	.0062
1	5220-749-8107	.9375-20UNEF-3A-3 W	.9050	.9375 +.0005	.9285 -.0005	.90500 -.00015	.00015	8	.0062
1	7518983	.9375-28UN-2A W	.9131	.9363 +.0005	.9292 -.0005	.91310 -.00015	.00015	8	.0045
1	7518984	.9375-28UN-3A W	.9143	.9375 +.0005	.9304 -.0005	.91430 -.00015	.00015	8	.0045
1	7518985	.9375-32UN-2A W	.9161	.9364 +.0005	.9299 -.0005	.91610 -.00015	.00015	12	.0039
1	7518986	.9375-32UN-3A W	.9172	.9375 +.0005	.9310 -.0005	.91720 -.00015	.00015	12	.0039
1	5220-749-8108	1.0000-8UNC-2A W	.9168	.9980 +.0007	.9809 -.0007	.9168 -.0002	.00025	5	.0156
1	5220-749-8109	1.0000-8UNC-3A-3 W	.9188	1.0000 +.0007	.9829 -.0007	.9188 -.0002	.00025	5	.0156
1	5220-749-8110	1.0000-12UNF-2A W	.9441	.9982 +.0006	.9853 -.0006	.9441 -.0002	.0002	6	.0104
1	5220-749-8111	1.0000-12UNF-3A,N-3 W	.9459	1.0000 +.0006	.9871 -.0006	.9459 -.0002	.0002	6	.0104
1	5220-751-6792	1.0000-16UN-2A W	.9579	.9985 +.0006	.9880 -.0006	.9579 -.0002	.00015	8	.0078
1	5220-749-8114	1.0000-16UN-3A-3 W	.9594	1.0000 +.0006	.9895 -.0005	.9594 -.0002	.00015	8	.0078

MIL-STD-273B
15 MARCH 1963

Table I. Tabulation of Design and Identification Data - Unified Standard Thread (Continued)

FIG. NO.	MARKING ON GAGE HANDLE			TRUNCATED THREAD SETTING PLUG GAGE DIMENSIONS					
	MIL-STD PART NUMBER	THREAD DESIGNATION	GO PITCH DIA	MAJOR DIA FULL PORTION	MAJOR DIA TRUNCATED PORTION	PITCH DIAMETER	TOL ON LEAD	HALF ANGLE TOL	ROOT CLEAR
A	B	C	D	E	F	G	H	J	K
1	5220-749-8115	1.0000-20UNEF-2A W	.9661	.9986 +.0005	.9896 -.0005	.99610 -.00015	.00015	8	.0062
1	5220-749-8116	1.0000-20UNEF-3A-3 W	.9675	1.0000 +.0005	.9910 -.0005	.96750 -.00015	.00015	8	.0062
1	7518987	1.0000-28UN-2A W	.9756	.9988 +.0005	.9917 -.0005	.97560 -.00015	.00015	8	.0045
1	7518988	1.0000-28UN-3A W	.9768	1.0000 +.0005	.9929 -.0005	.97680 -.00015	.00015	8	.0045
1	7518989	1.0000-32UN-2A W	.9786	.9989 +.0005	.9924 -.0005	.97860 -.00015	.00015	12	.0039
1	7518990	1.0000-32UN-3A W	.9797	1.0000 +.0005	.9935 -.0005	.97970 -.00015	.00015	12	.0039
1	7518991	1.0625-8UN-2A W	.9793	1.0605 +.0007	1.0434 -.0007	.9793 -.0002	.00025	5	.0156
1	7518992	1.0625-8UN-3A W	.9813	1.0625 +.0007	1.0454 -.0007	.9813 -.0002	.00025	5	.0156
1	5220-749-8117	1.0625-12UN-2A W	1.0067	1.0608 +.0006	1.0479 -.0006	1.0067 -.0002	.0002	6	.0104
1	5220-749-8118	1.0625-12UN-3A-3 W	1.0084	1.0625 +.0006	1.0496 -.0006	1.0084 -.0002	.0002	6	.0104
1	5220-751-6793	1.0625-16UN-2A W	1.0204	1.0610 +.0006	1.0505 -.0006	1.0204 -.0002	.00015	8	.0078
1	5220-749-8119	1.0625-16UN-3A-3 W	1.0219	1.0625 +.0006	1.0520 -.0006	1.0219 -.0002	.00015	8	.0078
1	5220-749-8120	1.0625-18UNEF-2A W	1.0250	1.0611 +.0005	1.0514 -.0005	1.02500 -.00015	.00015	8	.0069
1	5220-749-8121	1.0625-18UNEF-3A-3 W	1.0264	1.0625 +.0005	1.0528 -.0005	1.02640 -.00015	.00015	8	.0069
1	7518993	1.0625-20UN-2A W	1.0286	1.0611 +.0005	1.0521 -.0005	1.02860 -.00015	.00015	8	.0062

MIL-STD-273B

15 MARCH 1963

Table I. Tabulation of Design and Identification Data - Unified Standard Thread (Continued)

FIG. NO.	MARKING ON GAGE HANDLE			TRUNCATED THREAD SETTING PLUG GAGE DIMENSIONS					
	MIL-STD PART NUMBER	THREAD DESIGNATION	GO PITCH DIA	MAJOR DIA FULL PORTION	MAJOR DIA TRUNCATED PORTION	PITCH DIAMETER	TOL ON LEAD	HALF ANGLE TOL	ROOT CLEAR
A	B	C	D	E	F	G	H	J	K
1	7518994	1.0625-20UN-3A W	1.0300	1.0625 +.0005	1.0535 -.0005	1.03000 -.00015	.00015	8	.0062
1	7518995	1.0625-28UN-2A W	1.0381	1.0613 +.0005	1.0542 -.0005	1.03810 -.00015	.00015	8	.0045
1	7518996	1.0625-28UN-3A W	1.0393	1.0625 +.0005	1.0554 -.0005	1.03930 -.00015	.00015	8	.0045
1	5220-749-8122	1.1250-7UNC-2A W	1.0300	1.1228 +.0007	1.1040 -.0007	1.0300 -.0002	.0003	5	.0179
1	5220-749-8123	1.1250-7UNC-3A-3 W	1.0322	1.1250 +.0007	1.1062 -.0007	1.0322 -.0002	.0003	5	.0179
1	5220-749-8124	1.1250-8UN-2A W	1.0417	1.1229 +.0007	1.1058 -.0007	1.0417 -.0002	.00025	5	.0156
1	5220-749-8125	1.1250-8UN-3A-3 W	1.0438	1.1250 +.0007	1.1079 -.0007	1.0438 -.0002	.00025	5	.0156
1	5220-749-8126	1.1250-12UNF-2A W	1.0691	1.1232 +.0006	1.1103 -.0006	1.0691 -.0002	.0002	6	.0104
1	5220-749-8127	1.1250-12UNF-3A-3 W	1.0709	1.1250 +.0006	1.1121 -.0006	1.0709 -.0002	.0002	6	.0104
1	5220-751-6794	1.1250-16UN-2A W	1.0829	1.1235 +.0006	1.1130 -.0006	1.0829 -.0002	.00015	8	.0078
1	5220-749-8128	1.1250-16UN-3A-3 W	1.0844	1.1250 +.0006	1.1145 -.0006	1.0844 -.0002	.00015	8	.0078
1	5220-749-8129	1.1250-18UNEF-2A W	1.0875	1.1236 +.0005	1.1139 -.0005	1.08750 -.00015	.00015	8	.0069
1	5220-749-8130	1.1250-18UNEF-3A-3 W	1.0889	1.1250 +.0005	1.1153 -.0005	1.08890 -.00015	.00015	8	.0069
1	7518997	1.1250-20UN-2A W	1.0911	1.1236 +.0005	1.1146 -.0005	1.09110 -.00015	.00015	8	.0062
1	7518998	1.1250-20UN-3A W	1.0925	1.1250 +.0005	1.1160 -.0005	1.09250 -.00015	.00015	8	.0062

MIL-STD-273B

15 MARCH 1963

Table I. Tabulation of Design and Identification Data - Unified Standard Thread (Continued)

FIG. NO.	MARKING ON GAGE HANDLE			TRUNCATED THREAD SETTING PLUG GAGE DIMENSIONS					
	MIL-STD PART NUMBER	THREAD DESIGNATION	GO PITCH DIA	MAJOR DIA FULL PORTION	MAJOR DIA TRUNCATED PORTION	PITCH DIAMETER	TOL ON LEAD	HALF ANGLE TOL	ROOT CLEAR
A	B	C	D	E	F	G	H	J	K
1	7518999	1.1250-28UN-2A W	1.1006	1.1238 +.0005	1.1167 -.0005	1.10060 -.00015	.00015	8	.0045
1	7519000	1.1250-28UN-3A W	1.1018	1.1250 +.0005	1.1179 -.0005	1.10180 -.00015	.00015	8	.0045
1	7519001	1.1875-8UN-2A W	1.1042	1.1854 +.0007	1.1683 -.0007	1.1042 -.0002	.00025	5	.0156
1	7519002	1.1875-8UN-3A W	1.1063	1.1875 +.0007	1.1704 -.0007	1.1063 -.0002	.00025	5	.0156
1	5220-749-8131	1.1875-12UN-2A W	1.1317	1.1858 +.0006	1.1720 -.0006	1.1317 -.0002	.0002	6	.0104
1	5220-749-8132	1.1875-12UN-3A-3 W	1.1334	1.1875 +.0006	1.1746 -.0006	1.1334 -.0002	.0002	6	.0104
1	5220-751-6795	1.1875-16UN-2A W	1.1454	1.1860 +.0006	1.1755 -.0006	1.1454 -.0002	.00015	8	.0078
1	5220-749-8133	1.1875-16UN-3A-3 W	1.1469	1.1875 +.0006	1.1770 -.0006	1.1469 -.0002	.00015	8	.0078
1	5220-749-8134	1.1875-18UNEF-2A W	1.1499	1.1860 +.0005	1.1763 -.0005	1.14990 -.00015	.00015	8	.0069
1	5220-749-8135	1.1875-18UNEF-3A-3 W	1.1514	1.1875 +.0005	1.1778 -.0005	1.15140 -.00015	.00015	8	.0069
1	7519003	1.1875-20UN-2A W	1.1536	1.1861 +.0005	1.1771 -.0005	1.15360 -.00015	.00015	8	.0062
1	7519004	1.1875-20UN-3A W	1.1550	1.1875 +.0005	1.1785 -.0005	1.15500 -.00015	.00015	8	.0062
1	7519005	1.1875-28UN-2A W	1.1631	1.1863 +.0005	1.1792 -.0005	1.16310 -.00015	.00015	8	.0045
1	7519006	1.1875-28UN-3A W	1.1643	1.1875 +.0005	1.1804 -.0005	1.16430 -.00015	.00015	8	.0045
1	5220-749-8136	1.2500-7UNC-2A W	1.1550	1.2478 +.0007	1.2290 -.0007	1.1550 -.0002	.0003	5	.0179

MIL-STD-273B

15 MARCH 1963

Table I. Tabulation of Design and Identification Data - Unified Standard Thread (Continued)

FIG. NO.	MARKING ON GAGE HANDLE			TRUNCATED THREAD SETTING PLUG GAGE DIMENSIONS					
	MIL-STD PART NUMBER	THREAD DESIGNATION	GO PITCH DIA	MAJOR DIA FULL PORTION	MAJOR DIA TRUNCATED PORTION	PITCH DIAMETER	TOL ON LEAD	HALF ANGLE TOL	ROOT CLEAR
A	B	C	D	E	F	G	H	J	K
1	5220-749-8137	1.2500-7UNC-3A-3 W	1.1572	1.2500 +.0007	1.2312 -.0007	1.1572 -.0002	.0003	5	.0179
1	5220-749-8138	1.2500-8UN-2A W	1.1667	1.2479 +.0007	1.2308 -.0007	1.1667 -.0002	.00025	5	.0156
1	5220-749-8139	1.2500-8UN-3A-3 W	1.1688	1.2500 +.0007	1.2329 -.0007	1.1688 -.0002	.00025	5	.0156
1	5220-749-8140	1.2500-12UNF-2A W	1.1941	1.2482 +.0006	1.2353 -.0006	1.1941 -.0002	.0002	6	.0104
1	5220-749-8141	1.2500-12UNF-3A-3 W	1.1959	1.2500 +.0006	1.2371 -.0006	1.1959 -.0002	.0002	6	.0104
1	5220-751-6796	1.2500-16UN-2A W	1.2079	1.2485 +.0006	1.2380 -.0006	1.2079 -.0002	.00015	8	.0078
1	5220-749-8142	1.2500-16UN-3A-3 W	1.2094	1.2500 +.0006	1.2395 -.0006	1.2094 -.0002	.00015	8	.0078
1	5220-749-8143	1.2500-18UNEF-2A W	1.2124	1.2485 +.0005	1.2388 -.0005	1.21240 -.00015	.00015	8	.0069
1	5220-749-8144	1.2500-18UNEF-3A-3 W	1.2139	1.2500 +.0005	1.2403 -.0005	1.21390 -.00015	.00015	8	.0069
1	7519007	1.2500-20UN-2A W	1.2161	1.2486 +.0005	1.2396 -.0005	1.21610 -.00015	.00015	8	.0062
1	7519008	1.2500-20UN-3A W	1.2175	1.2500 +.0005	1.2410 -.0005	1.21750 -.00015	.00015	8	.0062
1	7519009	1.2500-28UN-2A W	1.2256	1.2488 +.0005	1.2417 -.0005	1.22560 -.00015	.00015	8	.0045
1	7519010	1.2500-28UN-3A W	1.2268	1.2500 +.0005	1.2429 -.0005	1.22680 -.00015	.00015	8	.0045
1	7519011	1.3125-8UN-2A W	1.2292	1.3104 +.0007	1.2933 -.0007	1.2292 -.0002	.00025	5	.0156
1	7519012	1.3125-8UN-3A W	1.2313	1.3125 +.0007	1.2954 -.0007	1.2313 -.0002	.00025	5	.0156

MIL-STD-273B

15 MARCH 1963

Table I. Tabulation of Design and Identification Data - Unified Standard Thread (Continued)

FIG. NO.	MARKING ON GAGE HANDLE			TRUNCATED THREAD SETTING PLUG GAGE DIMENSIONS					
	MIL-STD PART NUMBER	THREAD DESIGNATION	GO PITCH DIA	MAJOR DIA FULL PORTION	MAJOR DIA TRUNCATED PORTION	PITCH DIAMETER	TOL ON LEAD	HALF ANGLE TOL	ROOT CLEAR
A	B	C	D	E	F	G	H	J	K
1	5220-749-8145	1.3125-12UN-2A W	1.2567	1.3108 +.0006	1.2979 -.0006	1.2567 -.0002	.0002	6	.0104
1	5220-749-8146	1.3125-12UN-3A-3 W	1.2584	1.3125 +.0006	1.2996 -.0006	1.2584 -.0002	.0002	6	.0104
1	5220-751-6797	1.3125-16UN-2A W	1.2704	1.3110 +.0006	1.3005 -.0006	1.2704 -.0002	.00015	8	.0078
1	5220-749-8147	1.3125-16UN-3A-3 W	1.2719	1.3125 +.0006	1.3020 -.0006	1.2719 -.0002	.00015	8	.0078
1	5220-749-8148	1.3125-18UNEF-2A W	1.2749	1.3110 +.0005	1.3013 -.0005	1.27490 -.00015	.00015	8	.0069
1	5220-749-8149	1.3125-18UNEF-3A-3 W	1.2764	1.3125 +.0005	1.3028 -.0005	1.27640 -.00015	.00015	8	.0069
1	7519013	1.3125-20UN-2A W	1.2786	1.3111 +.0005	1.3021 -.0005	1.27860 -.00015	.00015	8	.0062
1	7519014	1.3125-20UN-3A W	1.2800	1.3125 +.0005	1.3035 -.0005	1.28000 -.00015	.00015	8	.0062
1	7519015	1.3125-28UN-2A W	1.2881	1.3113 +.0005	1.3042 -.0005	1.28810 -.00015	.00015	8	.0045
1	7519016	1.3125-28UN-3A W	1.2893	1.3125 +.0005	1.3054 -.0005	1.28930 -.00015	.00015	8	.0045
1	5220-749-8150	1.3750-6UNC-2A W	1.2643	1.3726 +.0008	1.3516 -.0008	1.2643 -.0002	.0003	5	.0208
1	5220-749-8151	1.3750-6UNC-3A-3 W	1.2667	1.3750 +.0008	1.3540 -.0008	1.2667 -.0002	.0003	5	.0208
1	5220-749-8152	1.3750-8UN-2A W	1.2916	1.3728 +.0007	1.3557 -.0007	1.2916 -.0002	.00025	5	.0156
1	5220-749-8153	1.3750-8UN-3A-3 W	1.2938	1.3750 +.0007	1.3579 -.0007	1.2938 -.0002	.00025	5	.0156
1	5220-749-8154	1.3750-12UNF-2A W	1.3190	1.3731 +.0006	1.3602 -.0006	1.3190 -.0002	.0002	6	.0104

15 MARCH 1963

Table I. Tabulation of Design and Identification Data - Unified Standard Thread (Continued)

FIG. NO.	MARKING ON GAGE HANDLE			TRUNCATED THREAD SETTING PLUG GAGE DIMENSIONS					
	MIL-STD PART NUMBER	THREAD DESIGNATION	GO PITCH DIA	MAJOR DIA FULL PORTION	MAJOR DIA TRUNCATED PORTION	PITCH DIAMETER	TOL ON LEAD	HALF ANGLE TOL	ROOT CLEAR
A	B	C	D	E	F	G	H	J	K
1	5220-749-8155	1.3750-12UNF-3A-3 W	1.3209	1.3750 +.0006	1.3621 -.0006	1.3209 -.0002	.0002	6	.0104
1	5220-751-6798	1.3750-16UN-2A W	1.3329	1.3735 +.0006	1.3630 -.0006	1.3329 -.0002	.00015	8	.0078
1	5220-749-8156	1.3750-16UN-3A-3 W	1.3344	1.3750 +.0006	1.3645 -.0006	1.3344 -.0002	.00015	8	.0078
1	5220-749-8157	1.3750-18UNEF-2A W	1.3374	1.3735 +.0005	1.3638 -.0005	1.33740 -.00015	.00015	8	.0069
1	5220-749-8158	1.3750-18UNEF-3A-3 W	1.3389	1.3750 +.0005	1.3653 -.0005	1.33890 -.00015	.00015	8	.0069
1	7519017	1.3750-20UN-2A W	1.3411	1.3736 +.0005	1.3646 -.0005	1.34110 -.00015	.00015	8	.0062
1	7519018	1.3750-20UN-3A W	1.3425	1.3750 +.0005	1.3660 -.0005	1.34250 -.00015	.00015	8	.0062
1	7519019	1.3750-28UN-2A W	1.3506	1.3738 +.0005	1.3667 -.0005	1.35060 -.00015	.00015	8	.0045
1	7519020	1.3750-28UN-3A W	1.3518	1.3750 +.0005	1.3679 -.0005	1.35180 -.00015	.00015	8	.0045
1	7519021	1.4375-6UN-2A W	1.3268	1.4351 +.0008	1.4141 -.0008	1.3268 -.0002	.0003	5	.0208
1	7519022	1.4375-6UN-3A W	1.3292	1.4375 +.0008	1.4165 -.0008	1.3292 -.0002	.0003	5	.0208
1	7519023	1.4375-8UN-2A W	1.3541	1.4353 +.0007	1.4182 -.0007	1.3541 -.0002	.00025	5	.0156
1	7519024	1.4375-8UN-3A W	1.3563	1.4375 +.0007	1.4204 -.0007	1.3563 -.0002	.00025	5	.0156
1	5220-749-8159	1.4375-12UN-2A W	1.3816	1.4357 +.0006	1.4228 -.0006	1.3816 -.0002	.0002	6	.0104
1	5220-749-8160	1.4375-12UN-3A-3 W	1.3834	1.4375 +.0006	1.4246 -.0006	1.3834 -.0002	.0002	6	.0104

MIL-STD-273B

15 MARCH 1963

Table I. Tabulation of Design and Identification Data - Unified Standard Thread (Continued)

FIG. NO.	MARKING ON GAGE HANDLE			TRUNCATED THREAD SETTING PLUG GAGE DIMENSIONS					
	MIL-STD PART NUMBER	THREAD DESIGNATION	GO PITCH DIA	MAJOR DIA FULL PORTION	MAJOR DIA TRUNCATED PORTION	PITCH DIAMETER	TOL ON LEAD	HALF ANGLE TOL	ROOT CLEAR
A	B	C	D	E	F	G	H	J	K
1	5220-751-6799	1.4375-16UN-2A W	1.3953	1.4359 +.0006	1.4254 -.0006	1.3953 -.0002	.00015	8	.0078
1	5220-749-8161	1.4375-16UN-3A-3 W	1.3969	1.4375 +.0006	1.4270 -.0006	1.3969 -.0002	.00015	8	.0078
1	5220-749-8162	1.4375-18UNEF-2A W	1.3999	1.4360 +.0005	1.4263 -.0005	1.39900 -.00015	.00015	8	.0069
1	5220-749-8163	1.4375-18UNEF-3A-3 W	1.4014	1.4375 +.0005	1.4278 -.0005	1.40140 -.00015	.00015	8	.0069
1	7519025	1.4375-20UN-2A W	1.4036	1.4361 +.0005	1.4271 -.0005	1.40360 -.00015	.00015	8	.0062
1	7519026	1.4375-20UN-3A W	1.4050	1.4375 +.0005	1.4285 -.0005	1.40500 -.00015	.00015	8	.0062
1	7519027	1.4375-28UN-2A W	1.4130	1.4362 +.0005	1.4291 -.0005	1.41300 -.00015	.00015	8	.0045
1	7519028	1.4375-28UN-3A W	1.4143	1.4375 +.0005	1.4304 -.0005	1.41430 -.00015	.00015	8	.0045
1	5220-749-8164	1.5000-6UNC-2A W	1.3893	1.4976 +.0008	1.4766 -.0008	1.3893 -.0002	.0003	5	.0208
1	5220-749-8165	1.5000-6UNC-3A-3 W	1.3917	1.5000 +.0008	1.4790 -.0008	1.3917 -.0002	.0003	5	.0208
1	5220-749-8166	1.5000-8UN-2A W	1.4166	1.4978 +.0007	1.4807 -.0007	1.4166 -.0002	.00025	5	.0156
1	5220-749-8167	1.5000-8UN-3A-3 W	1.4188	1.5000 +.0007	1.4829 -.0007	1.4188 -.0002	.00025	5	.0156
1	5220-749-8168	1.5000-12UNF-2A W	1.4440	1.4981 +.0006	1.4852 -.0006	1.4440 -.0002	.0002	6	.0104
1	5220-749-8169	1.5000-12UNF-3A-3 W	1.4459	1.5000 +.0006	1.4871 -.0006	1.4459 -.0002	.0002	6	.0104
1	5220-751-6800	1.5000-16UN-2A W	1.4578	1.4984 +.0006	1.4879 -.0006	1.4578 -.0002	.00015	8	.0078

MIL-STD-273B
15 MAR 1963

Table I. Tabulation of Design and Identification Data - Unified Standard Thread (Continued)

FIG. NO.	MARKING ON GAGE HANDLE			TRUNCATED THREAD SETTING PLUG GAGE DIMENSIONS					
	MIL-STD PART NUMBER	THREAD DESIGNATION	GO PITCH DIA	MAJOR DIA FULL PORTION	MAJOR DIA TRUNCATED PORTION	PITCH DIAMETER	TOL ON LEAD	HALF ANGLE TOL	ROOT CLEAR
A	B	C	D	E	F	G	H	J	K
1	5220-749-8170	1.5000-16UN-3A-3 W	1.4594	1.5000 +.0006	1.4895 -.0006	1.4594 -.0002	.00015	8	.0078
1	5220-749-8171	1.5000-18UNEF-2A W	1.4624	1.4985 +.0005	1.4888 -.0005	1.46240 -.00015	.00015	8	.0069
1	5220-749-8172	1.5000-18UNEF-3A-3 W	1.4639	1.5000 +.0005	1.4903 -.0005	1.46390 -.00015	.00015	8	.0069
1	7519029	1.5000-20UN-2A W	1.4661	1.4986 +.0005	1.4896 -.0005	1.46610 -.00015	.00015	8	.0062
1	7519030	1.5000-20UN-3A W	1.4675	1.5000 +.0005	1.4910 -.0005	1.46750 -.00015	.00015	8	.0062
1	7519031	1.5000-28UN-2A W	1.4755	1.4987 +.0005	1.4916 -.0005	1.47550 -.00015	.00015	8	.0045
1	7519032	1.5000-28UN-3A W	1.4768	1.5000 +.0005	1.4929 -.0005	1.47680 -.00015	.00015	8	.0045
2	7519033	1.5625-6UN-2A W	1.4518	1.5601 +.0008	1.5391 -.0008	1.45180 -.00025	.0003	5	.0208
2	7519034	1.5625-6UN-3A W	1.4542	1.5625 +.0008	1.5415 -.0008	1.45420 -.00025	.0003	5	.0208
2	7519035	1.5625-8UN-2A W	1.4791	1.5603 +.0007	1.5432 -.0007	1.47910 -.00025	.00025	5	.0156
2	7519036	1.5625-8UN-3A W	1.4813	1.5625 +.0007	1.5454 -.0007	1.48130 -.00025	.00025	5	.0156
2	7519037	1.5625-12UN-2A W	1.5066	1.5607 +.0006	1.5478 -.0006	1.50660 -.00025	.0002	6	.0104
2	7519038	1.5625-12UN-3A W	1.5084	1.5625 +.0006	1.5496 -.0006	1.50840 -.00025	.0002	6	.0104
2	5220-751-6801	1.5625-16UN-2A W	1.5203	1.5609 +.0006	1.5504 -.0006	1.52030 -.00025	.00015	8	.0078
2	5220-749-8173	1.5625-16UN-3A-3 W	1.5219	1.5625 +.0006	1.5520 -.0006	1.52190 -.00025	.00015	8	.0078

MIL-STD-273B
15 M RCH 1963

Table I. Tabulation of Design and Identification Data - Unified Standard Thread (Continued)

FIG. NO.	MARKING ON GAGE HANDLE			TRUNCATED THREAD SETTING PLUG GAGE DIMENSIONS					
	MIL-STD PART NUMBER	THREAD DESIGNATION	GO PITCH DIA	MAJOR DIA FULL PORTION	MAJOR DIA TRUNCATED PORTION	PITCH DIAMETER	TOL ON LEAD	HALF ANGLE TOL	ROOT CLEAR
A	B	C	D	E	F	G	H	J	K
2	5220-749-8174	1.5625-18UNEF-2A W	1.5249	1.5610 +.0005	1.5513 -.0005	1.5249 -.0002	.00015	8	.0069
2	5220-749-8175	1.5625-18UNEF-3A-3 W	1.5264	1.5625 +.0005	1.5528 -.0005	1.5264 -.0002	.00015	8	.0069
2	7519039	1.5625-20UN-2A W	1.5286	1.5611 +.0005	1.5521 -.0005	1.5286 -.0002	.00015	8	.0062
2	7519040	1.5625-20UN-3A W	1.5300	1.5625 +.0005	1.5535 -.0005	1.5300 -.0002	.00015	8	.0062
2	7519041	1.6250-6UN-2A W	1.5142	1.6225 +.0008	1.6015 -.0008	1.51420 -.00025	.0003	5	.0208
2	7519042	1.6250-6UN-3A W	1.5167	1.6250 +.0008	1.6040 -.0008	1.51670 -.00025	.0003	5	.0208
2	5220-749-8176	1.6250-8UN-2A W	1.5416	1.6228 +.0007	1.6057 -.0007	1.54160 -.00025	.00025	5	.0156
2	5220-749-8177	1.6250-8UN-3A-3 W	1.5438	1.6250 +.0007	1.6079 -.0007	1.54380 -.00025	.00025	5	.0156
2	5220-749-8178	1.6250-12UN-2A W	1.5691	1.6232 +.0006	1.6103 -.0006	1.56910 -.00025	.0002	6	.0104
2	5220-749-8179	1.6250-12UN-3A-3 W	1.5709	1.6250 +.0006	1.6121 -.0006	1.57090 -.00025	.0002	6	.0104
2	5220-751-6802	1.6250-16UN-2A W	1.5828	1.6234 +.0006	1.6129 -.0006	1.58280 -.00025	.00015	8	.0078
2	5220-749-8180	1.6250-16UN-3A-3 W	1.5844	1.6250 +.0006	1.6145 -.0006	1.58440 -.00025	.00015	8	.0078
2	5220-749-8181	1.6250-18UNEF-2A W	1.5874	1.6235 +.0005	1.6138 -.0005	1.5874 -.0002	.00015	8	.0069
2	5220-749-8182	1.6250-18UNEF-3A-3 W	1.5889	1.6250 +.0005	1.6153 -.0005	1.5889 -.0002	.00015	8	.0069
2	7519043	1.6250-20UN-2A W	1.5911	1.6236 +.0005	1.6146 -.0005	1.5911 -.0002	.00015	8	.0062

MIL-STD-273B
15 MAR 1963

Table I. Tabulation of Design and Identification Data - Unified Standard Thread (Continued)

FIG. NO.	MARKING ON GAGE HANDLE			TRUNCATED THREAD SETTING PLUG GAGE DIMENSIONS					
	MIL-STD PART NUMBER	THREAD DESIGNATION	GO PITCH DIA	MAJOR DIA FULL PORTION	MAJOR DIA TRUNCATED PORTION	PITCH DIAMETER	TOL ON LEAD	HALF ANGLE TOL	ROOT CLEAR
A	B	C	D	E	F	G	H	J	K
2	7519044	1.6250-20UN-3A W	1.5925	1.6250 +.0005	1.6160 -.0005	1.5925 -.0002	.00015	8	.0062
2	7519045	1.6875-6UN-2A W	1.5767	1.6850 +.0008	1.6640 -.0008	1.57670 -.00025	.0003	5	.0208
2	7519046	1.6875-6UN-3A W	1.5792	1.6875 +.0008	1.6665 -.0008	1.57920 -.00025	.0003	5	.0208
2	7519047	1.6875-8UN-2A W	1.6041	1.6853 +.0007	1.6682 -.0007	1.60410 -.00025	.00025	5	.0156
2	7519048	1.6875-8UN-3A W	1.6063	1.6875 +.0007	1.6704 -.0007	1.60630 -.00025	.00025	5	.0156
2	7519049	1.6875-12UN-2A W	1.6316	1.6857 +.0006	1.6728 -.0006	1.63160 -.00025	.0002	6	.0104
2	7519050	1.6875-12UN-3A W	1.6334	1.6875 +.0006	1.6746 -.0006	1.63340 -.00025	.0002	6	.0104
2	5220-751-6803	1.6875-16UN-2A W	1.6453	1.6859 +.0006	1.6754 -.0006	1.64530 -.00025	.00015	8	.0078
2	5220-749-8183	1.6875-16UN-3A-3 W	1.6469	1.6875 +.0006	1.6770 -.0006	1.64690 -.00025	.00015	8	.0078
2	5220-749-8184	1.6875-18UNEF-2A W	1.6499	1.6860 +.0005	1.6763 -.0005	1.6499 -.0002	.00015	8	.0069
2	5220-749-8185	1.6875-18UNEF-3A-3 W	1.6514	1.6875 +.0005	1.6778 -.0005	1.6514 -.0002	.00015	8	.0069
2	7519051	1.6875-20UN-2A W	1.6535	1.6860 +.0005	1.6770 -.0005	1.6535 -.0002	.00015	8	.0062
2	7519052	1.6875-20UN-3A W	1.6550	1.6875 +.0005	1.6785 -.0005	1.6550 -.0002	.00015	8	.0062
2	5220-749-8186	1.7500-5UNC-2A W	1.6174	1.7473 +.0008	1.7234 -.0008	1.61740 -.00025	.0003	4	.0250
2	5220-749-8187	1.7500-5UNC-3A-3 W	1.6201	1.7500 +.0008	1.7261 -.0008	1.62010 -.00025	.0003	4	.0250

ORDBA Form 20-1413, (OT) Rev 15 Mar 61

MIL-STD-273B
15 MARCH 1963

Table I. Tabulation of Design and Identification Data - Unified Standard Thread (Continued)

FIG. NO.	MARKING ON GAGE HANDLE			TRUNCATED THREAD SETTING PLUG GAGE DIMENSIONS					
	MIL-STD PART NUMBER	THREAD DESIGNATION	GO PITCH DIA	MAJOR DIA FULL PORTION	MAJOR DIA TRUNCATED PORTION	PITCH DIAMETER	TOL ON LEAD	HALF ANGLE TOL	ROOT CLEAR
A	B	C	D	E	F	G	H	J	K
2	7519053	1.7500-6UN-2A W	1.6392	1.7475 +.0008	1.7265 -.0008	1.63920 -.00025	.0003	5	.0208
2	7519054	1.7500-6UN-3A W	1.6417	1.7500 +.0008	1.7290 -.0008	1.64170 -.00025	.0003	5	.0208
2	5220-749-8188	1.7500-8UN-2A W	1.6665	1.7477 +.0007	1.7306 -.0007	1.66650 -.00025	.00025	5	.0156
2	5220-749-8189	1.7500-8UN-3A-3 W	1.6688	1.7500 +.0007	1.7329 -.0007	1.66880 -.00025	.00025	5	.0156
2	5220-749-8190	1.7500-12UN-2A W	1.6941	1.7482 +.0006	1.7353 -.0006	1.69410 -.00025	.0002	6	.0104
2	5220-749-8191	1.7500-12UN-3A-3 W	1.6959	1.7500 +.0006	1.7371 -.0006	1.69590 -.00025	.0002	6	.0104
2	5220-749-8192	1.7500-16UN-2A W	1.7078	1.7484 +.0006	1.7379 -.0006	1.70780 -.00025	.00015	8	.0078
2	5220-749-8193	1.7500-16UN-3A, NEF-3 W	1.7094	1.7500 +.0006	1.7395 -.0006	1.70940 -.00025	.00015	8	.0078
2	7519055	1.7500-20UN-2A W	1.7160	1.7485 +.0005	1.7395 -.0005	1.7160 -.0002	.00015	8	.0062
2	7519056	1.7500-20UN-3A W	1.7175	1.7500 +.0005	1.7410 -.0005	1.7175 -.0002	.00015	8	.0062
2	7519057	1.8125-6UN-2A W	1.7017	1.8100 +.0008	1.7890 -.0008	1.70170 -.00025	.0003	5	.0208
2	7519058	1.8125-6UN-3A W	1.7042	1.8125 +.0008	1.7915 -.0008	1.70420 -.00025	.0003	5	.0208
2	7519059	1.8125-8UN-2A W	1.7290	1.8102 +.0007	1.7931 -.0007	1.72900 -.00025	.00025	5	.0156
2	7519060	1.8125-8UN-3A W	1.7313	1.8125 +.0007	1.7954 -.0007	1.73130 -.00025	.00025	5	.0156
2	7519061	1.8125-12UN-2A W	1.7566	1.8107 +.0006	1.7978 -.0006	1.75660 -.00025	.0002	6	.0104

29

MIL-STD-273B

15 MARCH 1963

Table I. Tabulation of Design and Identification Data - Unified Standard Thread (Continued)

FIG. NO.	MARKING ON GAGE HANDLE			TRUNCATED THREAD SETTING PLUG GAGE DIMENSIONS					
	MIL-STD PART NUMBER	THREAD DESIGNATION	GO PITCH DIA	MAJOR DIA FULL PORTION	MAJOR DIA TRUNCATED PORTION	PITCH DIAMETER	TOL ON LEAD	HALF ANGLE TOL	ROOT CLEAR
A	B	C	D	E	F	G	H	J	K
2	7519062	1.8125-12UN-3A W	1.7584	1.8125 +.0006	1.7996 -.0006	1.75840 -.00025	.0002	6	.0104
2	5220-749-8194	1.8125-16UN-2A W	1.7703	1.8109 +.0006	1.8004 -.0006	1.77030 -.00025	.00015	8	.0078
2	5220-749-8195	1.8125-16UN-3A-3 W	1.7719	1.8125 +.0006	1.8020 -.0006	1.77190 -.00025	.00015	8	.0078
2	7519063	1.8125-20UN-2A W	1.7785	1.8110 +.0005	1.8020 -.0005	1.7785 -.0002	.00015	8	.0062
2	7519064	1.8125-20UN-3A W	1.7800	1.8125 +.0005	1.8035 -.0005	1.7800 -.0002	.00015	8	.0062
2	7519065	1.8750-6UN-2A W	1.7642	1.8725 +.0008	1.8515 -.0008	1.76420 -.00025	.0003	5	.0208
2	7519066	1.8750-6UN-3A W	1.7667	1.8750 +.0008	1.8540 -.0008	1.76670 -.00025	.0003	5	.0208
2	5220-749-8196	1.8750-8UN-2A W	1.7915	1.8727 +.0007	1.8556 -.0007	1.79150 -.00025	.00025	5	.0156
2	5220-749-8197	1.8750-8UN-3A-3 W	1.7938	1.8750 +.0007	1.8579 -.0007	1.79380 -.00025	.00025	5	.0156
2	5220-749-8198	1.8750-12UN-2A W	1.8191	1.8732 +.0006	1.8603 -.0006	1.81910 -.00025	.0002	6	.0104
2	5220-749-8199	1.8750-12UN-3A-3 W	1.8209	1.8750 +.0006	1.8621 -.0006	1.82090 -.00025	.0002	6	.0104
2	5220-749-8200	1.8750-16UN-2A W	1.8328	1.8734 +.0006	1.8629 -.0006	1.83280 -.00025	.00015	8	.0078
2	5220-749-8201	1.8750-16UN-3A-3 W	1.8344	1.8750 +.0006	1.8645 -.0006	1.83440 -.00025	.00015	8	.0078
2	7519067	1.8750-20UN-2A W	1.8410	1.8735 +.0005	1.8645 -.0005	1.8410 -.0002	.00015	8	.0062
2	7519068	1.8750-20UN-3A W	1.8425	1.8750 +.0005	1.8660 -.0005	1.8425 -.0002	.00015	8	.0062

MIL-STD-273B

15 MARCH 1963

Table I. Tabulation of Design and Identification Data - Unified Standard Thread (Continued)

FIG. NO.	MARKING ON GAGE HANDLE			TRUNCATED THREAD SETTING PLUG GAGE DIMENSIONS					
	MIL-STD PART NUMBER	THREAD DESIGNATION	GO PITCH DIA	MAJOR DIA FULL PORTION	MAJOR DIA TRUNCATED PORTION	PITCH DIAMETER	TOL ON LEAD	HALF ANGLE TOL	ROOT CLEAR
A	B	C	D	E	F	G	H	J	K
2	7519069	1.9375-6UN-2A W	1.8266	1.9349 +.0008	1.9139 -.0008	1.82660 -.00025	.0003	5	.0208
2	7519070	1.9375-6UN-3A W	1.8292	1.9375 +.0008	1.9165 -.0008	1.82920 -.00025	.0003	5	.0208
2	7519071	1.9375-8UN-2A W	1.8540	1.9352 +.0007	1.9181 -.0007	1.85400 -.00025	.00025	5	.0156
2	7519072	1.9375-8UN-3A W	1.8563	1.9375 +.0007	1.9204 -.0007	1.85630 -.00025	.00025	5	.0156
2	7519073	1.9375-12UN-2A W	1.8816	1.9357 +.0006	1.9228 -.0006	1.88160 -.00025	.0002	6	.0104
2	7519074	1.9375-12UN-3A W	1.8834	1.9375 +.0006	1.9246 -.0006	1.88340 -.00025	.0002	6	.0104
2	5220-749-8202	1.9375-16UN-2A W	1.8953	1.9359 +.0006	1.9254 -.0006	1.89530 -.00025	.00015	8	.0078
2	5220-749-8203	1.9375-16UN-3A-3 W	1.8969	1.9375 +.0006	1.9270 -.0006	1.89690 -.00025	.00015	8	.0078
2	7519075	1.9375-20UN-2A W	1.9035	1.9360 +.0005	1.9270 -.0005	1.9035 -.0002	.00015	8	.0062
2	7519076	1.9375-20UN-3A W	1.9050	1.9375 +.0005	1.9285 -.0005	1.9050 -.0002	.00015	8	.0062
2	5220-749-8204	2.0000-4-1/2UNC-2A W	1.8528	1.9971 +.0008	1.9713 -.0008	1.85280 -.00025	.0003	4	.0278
2	5220-749-8205	2.0000-4-1/2UNC-3A-3 W	1.8557	2.0000 +.0008	1.9742 -.0008	1.85570 -.00025	.0003	4	.0278
2	7519077	2.0000-6UN-2A W	1.8891	1.9974 +.0008	1.9764 -.0008	1.88910 -.00025	.0003	5	.0208
2	7519078	2.0000-6UN-3A W	1.8917	2.0000 +.0008	1.9790 -.0008	1.89170 -.00025	.0003	5	.0208
2	5220-749-8206	2.0000-8UN-2A W	1.9165	1.9977 +.0007	1.9806 -.0007	1.91650 -.00025	.00025	5	.0156

MIL-STD-273B
15 MARCH 1963

Table I. Tabulation of Design and Identification Data - Unified Standard Thread (Continued)

FIG. NO.	MARKING ON GAGE HANDLE			TRUNCATED THREAD SETTING PLUG GAGE DIMENSIONS					
	MIL-STD PART NUMBER	THREAD DESIGNATION	GO PITCH DIA	MAJOR DIA FULL PORTION	MAJOR DIA TRUNCATED PORTION	PITCH DIAMETER	TOL ON LEAD	HALF ANGLE TOL	ROOT CLEAR
A	B	C	D	E	F	G	H	J	K
2	5220-749-8207	2.0000-8UN-3A-3 W	1.9188	2.0000 +.0007	1.9829 -.0007	1.91880 -.00025	.00025	5	.0156
2	5220-749-8208	2.0000-12UN-2A W	1.9441	1.9982 +.0006	1.9853 -.0006	1.94410 -.00025	.0002	6	.0104
2	5220-749-8209	2.0000-12UN-3A-3 W	1.9459	2.0000 +.0006	1.9871 -.0006	1.94590 -.00025	.0002	6	.0104
2	5220-749-8210	2.0000-16UN-2A W	1.9578	1.9984 +.0006	1.9879 -.0006	1.95780 -.00025	.00015	8	.0078
2	5220-749-8211	2.0000-16UN-3A,NEF-3 W	1.9594	2.0000 +.0006	1.9895 -.0006	1.95940 -.00025	.00015	8	.0078
2	7519079	2.0000-20UN-2A W	1.9660	1.9985 +.0005	1.9895 -.0005	1.9660 -.0002	.00015	8	.0062
2	7519080	2.0000-20UN-3A W	1.9675	2.0000 +.0005	1.9910 -.0005	1.9675 -.0002	.00015	8	.0062
2	7519081	2.1250-6UN-2A W	2.0141	2.1224 +.0008	2.1014 -.0008	2.01410 -.00025	.0003	5	.0208
2	7519082	2.1250-6UN-3A W	2.0167	2.1250 +.0008	2.1040 -.0008	2.01670 -.00025	.0003	5	.0208
2	5220-749-8214	2.1250-8UN-2A W	2.0414	2.1226 +.0007	2.1055 -.0007	2.04140 -.00025	.00025	5	.0156
2	5220-749-8215	2.1250-8UN-3A-3 W	2.0438	2.1250 +.0007	2.1079 -.0007	2.04380 -.00025	.00025	5	.0156
2	5220-749-8216	2.1250-12UN-2A W	2.0691	2.1232 +.0006	2.1103 -.0006	2.06910 -.00025	.0002	6	.0104
2	5220-749-8217	2.1250-12UN-3A-3 W	2.0709	2.1250 +.0006	2.1121 -.0006	2.07090 -.00025	.0002	6	.0104
2	5220-749-8218	2.1250-16UN-2A W	2.0828	2.1234 +.0006	2.1129 -.0006	2.08280 -.00025	.00015	8	.0078
2	5220-749-8219	2.1250-16UN-3A-3 W	2.0844	2.1250 +.0006	2.1145 -.0006	2.08440 -.00025	.00015	8	.0078

MIL-STD-273B
15 MARCH 1963

Table I. Tabulation of Design and Identification Data - Unified Standard Thread (Continued)

FIG. NO.	MARKING ON GAGE HANDLE			TRUNCATED THREAD SETTING PLUG GAGE DIMENSIONS					
	MIL-STD PART NUMBER	THREAD DESIGNATION	GO PITCH DIA	MAJOR DIA FULL PORTION	MAJOR DIA TRUNCATED PORTION	PITCH DIAMETER	TOL ON LEAD	HALF ANGLE TOL	ROOT CLEAR
A	B	C	D	E	F	G	H	J	K
2	7519083	2.1250-20UN-2A W	2.0910	2.1235 +.0005	2.1145 -.0005	2.0910 -.0002	.00015	8	.0062
2	7519084	2.1250-20UN-3A W	2.0925	2.1250 +.0005	2.1160 -.0005	2.0925 -.0002	.00015	8	.0062
2	5220-749-8222	2.2500-4-1/2UNC-2A W	2.1028	2.2471 +.0008	2.2213 -.0008	2.10280 -.00025	.0003	4	.0278
2	5220-749-8223	2.2500-4-1/2UNC-3A-3 W	2.1057	2.2500 +.0008	2.2242 -.0008	2.10570 -.00025	.0003	4	.0278
2	7519085	2.2500-6UN-2A W	2.1391	2.2474 +.0008	2.2264 -.0008	2.13910 -.00025	.0003	5	.0208
2	7519086	2.2500-6UN-3A W	2.1417	2.2500 +.0008	2.2290 -.0008	2.14170 -.00025	.0003	5	.0208
2	5220-749-8224	2.2500-8UN-2A W	2.1664	2.2476 +.0007	2.2305 -.0007	2.16640 -.00025	.00025	5	.0156
2	5220-749-8225	2.2500-8UN-3A-3 W	2.1688	2.2500 +.0007	2.2329 -.0007	2.16880 -.00025	.00025	5	.0156
2	5220-749-8226	2.2500-12UN-2A W	2.1941	2.2482 +.0006	2.2353 -.0006	2.19410 -.00025	.0002	6	.0104
2	5220-749-8227	2.2500-12UN-3A-3 W	2.1959	2.2500 +.0006	2.2371 -.0006	2.19590 -.00025	.0002	6	.0104
2	5220-749-8228	2.2500-16UN-2A W	2.2078	2.2484 +.0006	2.2379 -.0006	2.20780 -.00025	.00015	8	.0078
2	5220-749-8229	2.2500-16UN-3A-3 W	2.2094	2.2500 +.0006	2.2395 -.0006	2.20940 -.00025	.00015	8	.0078
2	7519087	2.2500-20UN-2A W	2.2160	2.2485 +.0005	2.2395 -.0005	2.2160 -.0002	.00015	8	.0062
2	7519088	2.2500-20UN-3A W	2.2175	2.2500 +.0005	2.2410 -.0005	2.2175 -.0002	.00015	8	.0062
2	7519089	2.3750-6UN-2A W	2.2640	2.3723 +.0008	2.3513 -.0008	2.26400 -.00025	.0003	5	.0208

MIL-STD-273B

15 MARCH 1963

Table I. Tabulation of Design and Identification Data - Unified Standard Thread (Continued)

FIG. NO.	MARKING ON GAGE HANDLE			TRUNCATED THREAD SETTING PLUG GAGE DIMENSIONS					
	MIL-STD PART NUMBER	THREAD DESIGNATION	GO PITCH DIA	MAJOR DIA FULL PORTION	MAJOR DIA TRUNCATED PORTION	PITCH DIAMETER	TOL ON LEAD	HALF ANGLE TOL	ROOT CLEAR
A	B	C	D	E	F	G	H	J	K
2	7519090	2.3750-6UN-3A W	2.2667	2.3750 +.0008	2.3540 -.0008	2.26670 -.00025	.0003	5	.0208
2	7519091	2.3750-8UN-2A W	2.2914	2.3726 +.0007	2.3555 -.0007	2.29140 -.00025	.00025	5	.0156
2	7519092	2.3750-8UN-3A W	2.2938	2.3750 +.0007	2.3579 -.0007	2.29380 -.00025	.00025	5	.0156
2	5220-749-8232	2.3750-12UN-2A W	2.3190	2.3731 +.0006	2.3602 -.0006	2.31900 -.00025	.0002	6	.0104
2	5220-749-8233	2.3750-12UN-3A-3 W	2.3209	2.3750 +.0006	2.3621 -.0006	2.32090 -.00025	.0002	6	.0104
2	5220-749-8234	2.3750-16UN-2A W	2.3327	2.3733 +.0006	2.3628 -.0006	2.33270 -.00025	.00015	8	.0078
2	5220-749-8235	2.3750-16UN-3A-3 W	2.3344	2.3750 +.0006	2.3645 -.0006	2.33440 -.00025	.00015	8	.0078
2	7519093	2.3750-20UN-2A W	2.3410	2.3735 +.0005	2.3645 -.0005	2.3410 -.0002	.00015	8	.0062
2	7519094	2.3750-20UN-3A W	2.3425	2.3750 +.0005	2.3660 -.0005	2.3425 -.0002	.00015	8	.0062
2	5220-749-8238	2.5000-4UNC-2A W	2.3345	2.4969 +.0009	2.4688 -.0009	2.33450 -.00025	.0003	4	.0312
2	5220-749-8239	2.5000-4UNC-3A-3 W	2.3376	2.5000 +.0009	2.4719 -.0009	2.33760 -.00025	.0003	4	.0312
2	7519095	2.5000-6UN-2A W	2.3890	2.4973 +.0008	2.4763 -.0008	2.38900 -.00025	.0003	5	.0208
2	7519096	2.5000-6UN-3A W	2.3917	2.5000 +.0008	2.4790 -.0008	2.39170 -.00025	.0003	5	.0208
2	5220-749-8240	2.5000-8UN-2A W	2.4164	2.4976 +.0007	2.4805 -.0007	2.41640 -.00025	.00025	5	.0156
2	5220-749-8241	2.5000-8UN-3A-3 W	2.4188	2.5000 +.0007	2.4829 -.0007	2.41880 -.00025	.00025	5	.0156

MIL-STD-273B
15 MARCH 1963

Table I. Tabulation of Design and Identification Data - Unified Standard Thread (Continued)

FIG. NO.	MARKING ON GAGE HANDLE			TRUNCATED THREAD SETTING PLUG GAGE DIMENSIONS					
	MIL-STD PART NUMBER	THREAD DESIGNATION	GO PITCH DIA	MAJOR DIA FULL PORTION	MAJOR DIA TRUNCATED PORTION	PITCH DIAMETER	TOL ON LEAD	HALF ANGLE TOL	ROOT CLEAR
A	B	C	D	E	F	G	H	J	K
2	5220-749-8242	2.5000-12UN-2A W	2.4440	2.4981 +.0006	2.4852 -.0006	2.44400 -.00025	.0002	6	.0104
2	5220-749-8243	2.5000-12UN-3A-3 W	2.4459	2.5000 +.0006	2.4871 -.0006	2.44590 -.00025	.0002	6	.0104
2	5220-749-8244	2.5000-16UN-2A W	2.4577	2.4983 +.0006	2.4878 -.0006	2.45770 -.00025	.00015	8	.0078
2	5220-749-8245	2.5000-16UN-3A-3 W	2.4594	2.5000 +.0006	2.4895 -.0006	2.45940 -.00025	.00015	8	.0078
2	7519097	2.5000-20UN-2A W	2.4660	2.4985 +.0005	2.4895 -.0005	2.4660 -.0002	.00015	8	.0062
2	7519098	2.5000-20UN-3A W	2.4675	2.5000 +.0005	2.4910 -.0005	2.4675 -.0002	.00015	8	.0062
2	7519099	2.6250-6UN-2A W	2.5140	2.6223 +.0008	2.6013 -.0008	2.51400 -.00025	.0003	5	.0208
2	7519100	2.6250-6UN-3A W	2.5167	2.6250 +.0008	2.6040 -.0008	2.51670 -.00025	.0003	5	.0208
2	7519101	2.6250-8UN-2A W	2.5413	2.6225 +.0007	2.6054 -.0007	2.54130 -.00025	.00025	5	.0156
2	7519102	2.6250-8UN-3A W	2.5438	2.6250 +.0007	2.6079 -.0007	2.54380 -.00025	.00025	5	.0156
2	5220-749-8246	2.6250-12UN-2A W	2.5690	2.6231 +.0006	2.6102 -.0006	2.56900 -.00025	.0002	6	.0104
2	5220-749-8247	2.6250-12UN-3A-3 W	2.5709	2.6250 +.0006	2.6121 -.0006	2.57090 -.00025	.0002	6	.0104
2	5220-749-8248	2.6250-16UN-2A W	2.5827	2.6233 +.0006	2.6128 -.0006	2.58270 -.00025	.00015	8	.0078
2	5220-749-8249	2.6250-16UN-3A-3 W	2.5844	2.6250 +.0006	2.6145 -.0006	2.58440 -.00025	.00015	8	.0078
2	7519103	2.6250-20UN-2A W	2.5910	2.6235 +.0005	2.6145 -.0005	2.5910 -.0002	.00015	8	.0062

MIL-STD-273B

15 MARCH 1963

Table I. Tabulation of Design and Identification Data - Unified Standard Thread (Continued)

FIG. NO.	MARKING ON GAGE HANDLE			TRUNCATED THREAD SETTING PLUG GAGE DIMENSIONS					
	MIL-STD PART NUMBER	THREAD DESIGNATION	GO PITCH DIA	MAJOR DIA FULL PORTION	MAJOR DIA TRUNCATED PORTION	PITCH DIAMETER	TOL ON LEAD	HALF ANGLE TOL	ROOT CLEAR
A	B	C	D	E	F	G	H	J	K
2	7519104	2.6250-20UN-3A W	2.5925	2.6250 +.0005	2.6160 -.0005	2.5925 -.0002	.00015	8	.0062
2	5220-749-8250	2.7500-4UNC-2A W	2.5844	2.7468 +.0009	2.7187 -.0009	2.58440 -.00025	.0003	4	.0312
2	5220-749-8251	2.7500-4UNC-3A-3 W	2.5876	2.7500 +.0009	2.7219 -.0009	2.58760 -.00025	.0003	4	.0312
2	7519105	2.7500-6UN-2A W	2.6390	2.7473 +.0008	2.7263 -.0008	2.63900 -.00025	.0003	5	.0208
2	7519106	2.7500-6UN-3A W	2.6417	2.7500 +.0008	2.7290 -.0008	2.64170 -.00025	.0003	5	.0208
2	5220-749-8252	2.7500-8UN-2A W	2.6663	2.7475 +.0007	2.7304 -.0007	2.66630 -.00025	.00025	5	.0156
2	5220-749-8253	2.7500-8UN-3A-3 W	2.6688	2.7500 +.0007	2.7329 -.0007	2.66880 -.00025	.00025	5	.0156
2	5220-749-8254	2.7500-12UN-2A W	2.6940	2.7481 +.0006	2.7352 -.0006	2.69400 -.00025	.0002	6	.0104
2	5220-749-8255	2.7500-12UN-3A-3 W	2.6959	2.7500 +.0006	2.7371 -.0006	2.69590 -.00025	.0002	6	.0104
2	5220-749-8256	2.7500-16UN-2A W	2.7077	2.7483 +.0006	2.7378 -.0006	2.70770 -.00025	.00015	8	.0078
2	5220-749-8257	2.7500-16UN-3A-3 W	2.7094	2.7500 +.0006	2.7395 -.0006	2.70940 -.00025	.00015	8	.0078
2	7519107	2.7500-20UN-2A W	2.7160	2.7485 +.0005	2.7395 -.0005	2.7160 -.0002	.00015	8	.0062
2	7519108	2.7500-20UN-3A W	2.7175	2.7500 +.0005	2.7410 -.0005	2.7175 -.0002	.00015	8	.0062
2	7519109	2.8750-6UN-2A W	2.7639	2.8722 +.0008	2.8512 -.0008	2.76390 -.00025	.0003	5	.0208
2	7519110	2.8750-6UN-3A W	2.7667	2.8750 +.0008	2.8540 -.0008	2.76670 -.00025	.0003	5	.0208

MIL-STD-273B
15 MARCH 1963

Table I. Tabulation of Design and Identification - Unified Standard Thread (Continued)

FIG. NO.	MARKING ON GAGE HANDLE			TRUNCATED THREAD SETTING PLUG GAGE DIMENSIONS					
	MIL-STD PART NUMBER	THREAD DESIGNATION	GO PITCH DIA	MAJOR DIA FULL PORTION	MAJOR DIA TRUNCATED PORTION	PITCH DIAMETER	TOL ON LEAD	HALF ANGLE TOL	ROOT CLEAR
A	B	C	D	E	F	G	H	J	K
2	7519111	2.8750-8UN-2A W	2.7913	2.8725 +.0007	2.8554 -.0007	2.79130 -.00025	.00025	5	.0156
2	7519112	2.8750-8UN-3A W	2.7938	2.8750 +.0007	2.8579 -.0007	2.79380 -.00025	.00025	5	.0156
2	5220-749-8258	2.8750-12UN-2A W	2.8190	2.8731 +.0006	2.8602 -.0006	2.81900 -.00025	.0002	6	.0104
2	5220-749-8259	2.8750-12UN-3A-3 W	2.8209	2.8750 +.0006	2.8621 -.0006	2.82090 -.00025	.0002	6	.0104
2	5220-749-8260	2.8750-16UN-2A W	2.8327	2.8733 +.0006	2.8628 -.0006	2.83270 -.00025	.00015	8	.0078
2	5220-749-8261	2.8750-16UN-3A-3 W	2.8344	2.8750 +.0006	2.8645 -.0006	2.83440 -.00025	.00015	8	.0078
2	7519113	2.8750-20UN-2A W	2.8409	2.8734 +.0005	2.8644 -.0005	2.8409 -.0002	.00015	8	.0062
2	7519114	2.8750-20UN-3A W	2.8425	2.8750 +.0005	2.8660 -.0005	2.8425 -.0002	.00015	8	.0062
2	5220-749-8262	3.0000-4UNC-2A W	2.8344	2.9968 +.0009	2.9687 -.0009	2.83440 -.00025	.0003	4	.0312
2	5220-749-8263	3.0000-4UNC-3A-3 W	2.8376	3.0000 +.0009	2.9719 -.0009	2.83760 -.00025	.0003	4	.0312
2	7519115	3.0000-6UN-2A W	2.8889	2.9972 +.0008	2.9762 -.0008	2.88890 -.00025	.0003	5	.0208
2	7519116	3.0000-6UN-3A W	2.8917	3.0000 +.0008	2.9790 -.0008	2.89170 -.00025	.0003	5	.0208
2	5220-749-8264	3.0000-8UN-2A W	2.9162	2.9974 +.0007	2.9803 -.0007	2.91620 -.00025	.00025	5	.0156
2	5220-749-8265	3.0000-8UN-3A-3 W	2.9188	3.0000 +.0007	2.9829 -.0007	2.91880 -.00025	.00025	5	.0156
2	5220-749-8266	3.0000-12UN-2A W	2.9440	2.9981 +.0006	2.9852 -.0006	2.94400 -.00025	.0002	6	.0104

MIL-STD-273B

5 MARCH 1963

Table I. Tabulation of Design and Identification Data - Unified Standard Thread (Continued)

FIG. NO.	MARKING ON GAGE HANDLE			TRUNCATED THREAD SETTING PLUG GAGE DIMENSIONS					
	MIL-STD PART NUMBER	THREAD DESIGNATION	GO PITCH DIA	MAJOR DIA FULL PORTION	MAJOR DIA TRUNCATED PORTION	PITCH DIAMETER	TOL ON LEAD	HALF ANGLE TOL	ROOT CLEAR
A	B	C	D	E	F	G	H	J	K
2	5220-749-8267	3.0000-12UN-3A-3 W	2.9459	3.0000 +.0006	2.9871 -.0006	2.94590 -.00025	.0002	6	.0104
2	5220-749-8268	3.0000-16UN-2A W	2.9577	2.9983 +.0006	2.9878 -.0006	2.95770 -.00025	.00015	8	.0078
2	5220-749-8269	3.0000-16UN-3A-3 W	2.9594	3.0000 +.0006	2.9895 -.0006	2.95940 -.00025	.00015	8	.0078
2	7519117	3.0000-20UN-2A W	2.9659	2.9984 +.0005	2.9894 -.0005	2.9659 -.0002	.00015	8	.0062
2	7519118	3.0000-20UN-3A W	2.9675	3.0000 +.0005	2.9910 -.0005	2.9675 -.0002	.00015	8	.0062
2	7519119	3.1250-6UN-2A W	3.0139	3.1222 +.0008	3.1012 -.0008	3.01390 -.00025	.0003	5	.0208
2	7519120	3.1250-6UN-3A W	3.0167	3.1250 +.0008	3.1040 -.0008	3.01670 -.00025	.0003	5	.0208
2	7519121	3.1250-8UN-2A W	3.0412	3.1224 +.0007	3.1053 -.0007	3.04120 -.00025	.00025	5	.0156
2	7519122	3.1250-8UN-3A W	3.0438	3.1250 +.0007	3.1079 -.0007	3.04380 -.00025	.00025	5	.0156
2	5220-749-8270	3.1250-12UN-2A W	3.0690	3.1231 +.0006	3.1102 -.0006	3.06900 -.00025	.0002	6	.0104
2	5220-749-8271	3.1250-12UN-3A-3 W	3.0709	3.1250 +.0006	3.1121 -.0006	3.07090 -.00025	.0002	6	.0104
2	5220-749-8272	3.1250-16UN-2A W	3.0827	3.1233 +.0006	3.1128 -.0006	3.08270 -.00025	.00015	8	.0078
2	5220-749-8273	3.1250-16UN-3A-3 W	3.0844	3.1250 +.0006	3.1145 -.0006	3.08440 -.00025	.00015	8	.0078
2	5220-749-8274	3.2500-4UNC-2A W	3.0843	3.2467 +.0009	3.2186 -.0009	3.08430 -.00025	.0003	4	.0312
2	5220-749-8275	3.2500-4UNC-3A-3 W	3.0876	3.2500 +.0009	3.2219 -.0009	3.08760 -.00025	.0003	4	.0312

ORDINA Form 26-1414, (01) Rev. 13 Mar. 61

MIL-STD-273B
15 MARCH 1963

Table I. Tabulation of Design and Identification Data - Unified Standard Thread (Continued)

FIG. NO.	MARKING ON GAGE HANDLE			TRUNCATED THREAD SETTING PLUG GAGE DIMENSIONS					
	MIL-STD PART NUMBER	THREAD DESIGNATION	GO PITCH DIA	MAJOR DIA FULL PORTION	MAJOR DIA TRUNCATED PORTION	PITCH DIAMETER	TOL ON LEAD	HALF ANGLE TOL	ROOT CLEAR
A	B	C	D	E	F	G	H	J	K
2	7519123	3.2500-6UN-2A W	3.1389	3.2472 +.0008	3.2262 -.0008	3.13890 -.00025	.0003	5	.0208
2	7519124	3.2500-6UN-3A W	3.1417	3.2500 +.0008	3.2290 -.0008	3.14170 -.00025	.0003	5	.0208
2	5220-749-8276	3.2500-8UN-2A W	3.1662	3.2474 +.0007	3.2303 -.0007	3.16620 -.00025	.00025	5	.0156
2	5220-749-8277	3.2500-8UN-3A-3 W	3.1688	3.2500 +.0007	3.2329 -.0007	3.16880 -.00025	.00025	5	.0156
2	5220-749-8278	3.2500-12UN-2A W	3.1940	3.2481 +.0006	3.2352 -.0006	3.19400 -.00025	.0002	6	.0104
2	5220-749-8279	3.2500-12UN-3A-3 W	3.1959	3.2500 +.0006	3.2371 -.0006	3.19590 -.00025	.0002	6	.0104
2	5220-749-8280	3.2500-16UN-2A W	3.2077	3.2483 +.0006	3.2378 -.0006	3.20770 -.00025	.00015	8	.0078
2	5220-749-8281	3.2500-16UN-3A-3 W	3.2094	3.2500 +.0006	3.2395 -.0006	3.20940 -.00025	.00015	8	.0078
2	7519125	3.3750-6UN-2A W	3.2638	3.3721 +.0008	3.3511 -.0008	3.26380 -.00025	.0003	5	.0208
2	7519126	3.3750-6UN-3A W	3.2667	3.3750 +.0008	3.3540 -.0008	3.26670 -.00025	.0003	5	.0208
2	7519127	3.3750-8UN-2A W	3.2912	3.3724 +.0007	3.3553 -.0007	3.29120 -.00025	.00025	5	.0156
2	7519128	3.3750-8UN-3A W	3.2938	3.3750 +.0007	3.3579 -.0007	3.29380 -.00025	.00025	5	.0156
2	5220-749-8282	3.3750-12UN-2A W	3.3190	3.3731 +.0006	3.3602 -.0006	3.31900 -.00025	.0002	6	.0104
2	5220-749-8283	3.3750-12UN-3A-3 W	3.3209	3.3750 +.0006	3.3621 -.0006	3.32090 -.00025	.0002	6	.0104
2	5220-749-8284	3.3750-16UN-2A W	3.3327	3.3733 +.0006	3.3628 -.0006	3.33270 -.00025	.00015	8	.0078

MIL-STD-273B
15 MARCH 1963

Table 1. Tabulation of Design and Identification Data - Unified Standard Thread (Continued)

FIG. NO.	MARKING ON GAGE HANDLE			TRUNCATED THREAD SETTING PLUG GAGE DIMENSIONS					
	MIL-STD PART NUMBER	THREAD DESIGNATION	GO PITCH DIA	MAJOR DIA FULL PORTION	MAJOR DIA TRUNCATED PORTION	PITCH DIAMETER	TOL ON LEAD	HALF ANGLE TOL	ROOT CLEAR
A	B	C	D	E	F	G	H	J	K
2	5220-749-8285	3.3750-16UN-3A-3 W	3.3344	3.3750 +.0006	3.3645 -.0006	3.33440 -.00025	.00015	8	.0078
2	5220-749-8286	3.5000-4UNC-2A W	3.3343	3.4967 +.0009	3.4686 -.0009	3.33430 -.00025	.0003	4	.0312
2	5220-749-8287	3.5000-4UNC-3A-3 W	3.3376	3.5000 +.0009	3.4719 -.0009	3.33760 -.00025	.0003	4	.0312
2	7519129	3.5000-6UN-2A W	3.3888	3.4971 +.0008	3.4761 -.0008	3.38880 -.00025	.0003	5	.0208
2	7519130	3.5000-6UN-3A W	3.3917	3.5000 +.0008	3.4790 -.0008	3.39170 -.00025	.0003	5	.0208
2	5220-749-8288	3.5000-8UN-2A W	3.4162	3.4974 +.0007	3.4803 -.0007	3.41620 -.00025	.00025	5	.0156
2	5220-749-8289	3.5000-8UN-3A-3 W	3.4188	3.5000 +.0007	3.4829 -.0007	3.41880 -.00025	.00025	5	.0156
2	5220-749-8290	3.5000-12UN-2A W	3.4440	3.4981 +.0006	3.4852 -.0006	3.44400 -.00025	.0002	6	.0104
2	5220-749-8291	3.5000-12UN-3A-3 W	3.4459	3.5000 +.0006	3.4871 -.0006	3.44590 -.00025	.0002	6	.0104
2	5220-749-8292	3.5000-16UN-2A W	3.4577	3.4983 +.0006	3.4878 -.0006	3.45770 -.00025	.00015	8	.0078
2	5220-749-8293	3.5000-16UN-3A-3 W	3.4594	3.5000 +.0006	3.4895 -.0006	3.45940 -.00025	.00015	8	.0078
2	7519131	3.6250-6UN-2A W	3.5138	3.6221 +.0008	3.6011 -.0008	3.51380 -.00025	.0003	5	.0208
2	7519132	3.6250-6UN-3A W	3.5167	3.6250 +.0008	3.6040 -.0008	3.51670 -.00025	.0003	5	.0208
2	7519133	3.6250-8UN-2A W	3.5411	3.6223 +.0007	3.6052 -.0007	3.54110 -.00025	.00025	5	.0156
2	7519134	3.6250-8UN-3A W	3.5438	3.6250 +.0007	3.6079 -.0007	3.54380 -.00025	.00025	5	.0156

ORDBA Form 40-1414, (OT) Rev. 15 Mar. 61

MIL-STD-278B
15 MARCH 1963

Table I. Tabulation of Design and Identification Data - Unified Standard Thread (Continued)

FIG. NO.	MARKING ON GAGE HANDLE			TRUNCATED THREAD SETTING PLUG GAGE DIMENSIONS					
	MIL-STD PART NUMBER	THREAD DESIGNATION	GO PITCH DIA	MAJOR DIA FULL PORTION	MAJOR DIA TRUNCATED PORTION	PITCH DIAMETER	TOL ON LEAD	HALF ANGLE TOL	ROOT CLEAR
A	B	C	D	E	F	G	H	J	K
2	5220-749-8294	3.6250-12UN-2A W	3.5690	3.6231 +.0006	3.6102 -.0006	3.56900 -.00025	.0002	6	.0104
2	5220-749-8295	3.6250-12UN-3A-3 W	3.5709	3.6250 +.0006	3.6121 -.0006	3.57090 -.00025	.0002	6	.0104
2	5220-749-8296	3.6250-16UN-2A W	3.5827	3.6233 +.0006	3.6128 -.0006	3.58270 -.00025	.00015	8	.0078
2	5220-749-8297	3.6250-16UN-3A-3 W	3.5844	3.6250 +.0006	3.6145 -.0006	3.58440 -.00025	.00015	8	.0078
2	5220-749-8298	3.7500-4UNC-2A W	3.5842	3.7466 +.0009	3.7185 -.0009	3.58420 -.00025	.0003	4	.0312
2	5220-749-8299	3.7500-4UNC-3A-3 W	3.5876	3.7500 +.0009	3.7219 -.0009	3.58760 -.00025	.0003	4	.0312
2	7519135	3.7500-6UN-2A W	3.6388	3.7471 +.0008	3.7261 -.0008	3.63880 -.00025	.0003	5	.0208
2	7519136	3.7500-6UN-3A W	3.6417	3.7500 +.0008	3.7290 -.0008	3.64170 -.00025	.0003	5	.0208
2	5220-749-8300	3.7500-8UN-2A W	3.6661	3.7473 +.0007	3.7302 -.0007	3.66610 -.00025	.00025	5	.0156
2	5220-749-8301	3.7500-8UN-3A-3 W	3.6688	3.7500 +.0007	3.7329 -.0007	3.66880 -.00025	.00025	5	.0156
2	5220-749-8302	3.7500-12UN-2A W	3.6940	3.7481 +.0006	3.7352 -.0006	3.69400 -.00025	.0002	6	.0104
2	5220-749-8303	3.7500-12UN-3A-3 W	3.6959	3.7500 +.0006	3.7371 -.0006	3.69590 -.00025	.0002	6	.0104
2	5220-749-8304	3.7500-16UN-2A W	3.7077	3.7483 +.0006	3.7378 -.0006	3.70770 -.00025	.00015	8	.0078
2	5220-749-8305	3.7500-16UN-3A-3 W	3.7094	3.7500 +.0006	3.7395 -.0006	3.70940 -.00025	.00015	8	.0078
2	7519137	3.8750-6UN-2A W	3.7637	3.8720 +.0008	3.8510 -.0008	3.76370 -.00025	.0003	5	.0208

MIL-STD-273B
15 MARCH 1963

Table I. Tabulation of Design and Identification Data - Unified Standard Thread (Continued)

FIG. NO.	MARKING ON GAGE HANDLE			TRUNCATED THREAD SETTING PLUG GAGE DIMENSIONS					
	MIL-STD PART NUMBER	THREAD DESIGNATION	GO PITCH DIA	MAJOR DIA FULL PORTION	MAJOR DIA TRUNCATED PORTION	PITCH DIAMETER	TOL ON LEAD	HALF ANGLE TOL	ROOT CLEAR
A	B	C	D	E	F	G	H	J	K
2	7519138	3.8750-6UN-3A W	3.7667	3.8750 +.0008	3.8540 -.0008	3.76670 -.00025	.0003	5	.0208
2	7519139	3.8750-8UN-2A W	3.7911	3.8723 +.0007	3.8552 -.0007	3.79110 -.00025	.00025	5	.0156
2	7519140	3.8750-8UN-3A W	3.7938	3.8750 +.0007	3.8579 -.0007	3.79380 -.00025	.00025	5	.0156
2	5220-749-8306	3.8750-12UN-2A W	3.8189	3.8730 +.0006	3.8601 -.0006	3.81890 -.00025	.0002	6	.0104
2	5220-749-8307	3.8750-12UN-3A-3 W	3.8209	3.8750 +.0006	3.8621 -.0006	3.82090 -.00025	.0002	6	.0104
2	5220-749-8308	3.8750-16UN-2A W	3.8326	3.8732 +.0006	3.8627 -.0006	3.83260 -.00025	.00015	8	.0078
2	5220-749-8309	3.8750-16UN-3A-3 W	3.8344	3.8750 +.0006	3.8645 -.0006	3.83440 -.00025	.00015	8	.0078
2	5220-749-8310	4.0000-4UNC-2A W	3.8342	3.9966 +.0009	3.9685 -.0009	3.83420 -.00025	.0003	4	.0312
2	5220-749-8311	4.0000-4UNC-3A-3 W	3.8376	4.0000 +.0009	3.9719 -.0009	3.83760 -.00025	.0003	4	.0312
2	7519141	4.0000-6UN-2A W	3.8887	3.9970 +.0008	3.9760 -.0008	3.88870 -.00025	.0003	5	.0208
2	7519142	4.0000-6UN-3A W	3.8917	4.0000 +.0008	3.9790 -.0008	3.89170 -.00025	.0003	5	.0208
2	5220-749-8312	4.0000-8UN-2A W	3.9161	3.9973 +.0007	3.9802 -.0007	3.91610 -.00025	.00025	5	.0156
2	5220-749-8313	4.0000-8UN-3A-3 W	3.9188	4.0000 +.0007	3.9829 -.0007	3.91880 -.00025	.00025	5	.0156
2	5220-749-8314	4.0000-12UN-2A W	3.9439	3.9980 +.0006	3.9851 -.0006	3.94390 -.00025	.0002	6	.0104
2	5220-749-8315	4.0000-12UN-3A-3 W	3.9459	4.0000 +.0006	3.9871 -.0006	3.94590 -.00025	.0002	6	.0104

MIL-STD-273B
15 MARCH 1963

Table I. Tabulation of Design and Identification Data - Unified Standard Thread (Continued)

FIG. NO.	MARKING ON GAGE HANDLE			TRUNCATED THREAD SETTING PLUG GAGE DIMENSIONS					
	MIL-STD PART NUMBER	THREAD DESIGNATION	GO PITCH DIA	MAJOR DIA FULL PORTION	MAJOR DIA TRUNCATED PORTION	PITCH DIAMETER	TOL ON LEAD	HALF ANGLE TOL	ROOT CLEAR
A	B	C	D	E	F	G	H	J	K
2	5220-749-8316	4.0000-16UN-2A W	3.9576	3.9982 +.0006	3.9877 -.0006	3.95760 -.00025	.00015	8	.0078
2	5220-749-8317	4.0000-16UN-3A-3 W	3.9594	4.0000 +.0006	3.9895 -.0006	3.95940 -.00025	.00015	8	.0078
2	7519143	4.1250-6UN-2A W	4.0137	4.1220 +.0013	4.1010 -.0013	4.0137 -.0003	.0003	5	.0208
2	7519144	4.1250-6UN-3A W	4.0167	4.1250 +.0013	4.1040 -.0013	4.0167 -.0003	.0003	5	.0208
2	7519145	4.1250-12UN-2A W	4.0689	4.1230 +.0009	4.1101 -.0009	4.0689 -.0003	.0002	6	.0104
2	7519146	4.1250-12UN-3A W	4.0709	4.1250 +.0009	4.1121 -.0009	4.0709 -.0003	.0002	6	.0104
2	7519147	4.1250-16UN-2A W	4.0826	4.1232 +.0009	4.1127 -.0009	4.0826 -.0003	.00015	8	.0078
2	7519148	4.1250-16UN-3A W	4.0844	4.1250 +.0009	4.1145 -.0009	3.0844 -.0003	.00015	8	.0078
2	7519149	4.2500-4UN-2A W	4.0842	4.2466 +.0015	4.2185 -.0015	4.0842 -.0003	.0003	4	.0312
2	7519150	4.2500-4UN-3A W	4.0876	4.2500 +.0015	4.2219 -.0015	4.0876 -.0003	.0003	4	.0312
2	7519151	4.2500-6UN-2A W	4.1387	4.2470 +.0013	4.2260 -.0013	4.1387 -.0003	.0003	5	.0208
2	7519152	4.2500-6UN-3A W	4.1417	4.2500 +.0013	4.2290 -.0013	4.1417 -.0003	.0003	5	.0208
2	5220-749-8320	4.2500-12UN-2A W	4.1939	4.2480 +.0009	4.2351 -.0009	4.1939 -.0003	.0002	6	.0104
2	5220-749-8321	4.2500-12UN-3A-3 W	4.1959	4.2500 +.0009	4.2371 -.0009	4.1959 -.0003	.0002	6	.0104
2	5220-749-8322	4.2500-16UN-2A W	4.2076	4.2482 +.0009	4.2377 -.0009	4.2076 -.0003	.00015	8	.0078

MIL-STD-2738

15 MARCH 1963

Table I. Tabulation of Design and Identification Data - Unified Standard Thread (Continued)

FIG. NO.	MARKING ON GAGE HANDLE			TRUNCATED THREAD SETTING PLUG GAGE DIMENSIONS					
	MIL-STD PART NUMBER	THREAD DESIGNATION	GO PITCH DIA	MAJOR DIA FULL PORTION	MAJOR DIA TRUNCATED PORTION	PITCH DIAMETER	TOL ON LEAD	HALF ANGLE TOL	ROOT CLEAR
A	B	C	D	E	F	G	H	J	K
2	5220-749-8323	4.2500-16UN-3A-3 W	4.2094	4.2500 +.0009	4.2395 -.0009	4.2094 -.0003	.00015	8	.0078
2	7519153	4.3750-6UN-2A W	4.2637	4.3720 +.0013	4.3510 -.0013	4.2637 -.0003	.0003	5	.0208
2	7519154	4.3750-6UN-3A W	4.2667	4.3750 +.0013	4.3540 -.0013	4.2667 -.0003	.0003	5	.0208
2	7519155	4.3750-12UN-2A W	4.3189	4.3730 +.0009	4.3601 -.0009	4.3189 -.0003	.0002	6	.0104
2	7519156	4.3750-12UN-3A W	4.3209	4.3750 +.0009	4.3621 -.0009	4.3209 -.0003	.0002	6	.0104
2	7519157	4.3750-16UN-2A W	4.3326	4.3732 +.0009	4.3627 -.0009	4.3326 -.0003	.00015	8	.0078
2	7519158	4.3750-16UN-3A W	4.3344	4.3750 +.0009	4.3645 -.0009	4.3344 -.0003	.00015	8	.0078
2	7519159	4.5000-4UN-2A W	4.3341	4.4965 +.0015	4.4684 -.0015	4.3341 -.0003	.0003	4	.0312
2	7519160	4.5000-4UN-3A W	4.3376	4.5000 +.0015	4.4719 -.0015	4.3376 -.0003	.0003	4	.0312
2	7519161	4.5000-6UN-2A W	4.3886	4.4969 +.0013	4.4759 -.0013	4.3886 -.0003	.0003	5	.0208
2	7519162	4.5000-6UN-3A W	4.3917	4.5000 +.0013	4.4790 -.0013	4.3917 -.0003	.0003	5	.0208
2	5220-749-8326	4.5000-12UN-2A W	4.4439	4.4980 +.0009	4.4851 -.0009	4.4439 -.0003	.0002	6	.0104
2	5220-749-8327	4.5000-12UN-3A-3 W	4.4459	4.5000 +.0009	4.4871 -.0009	4.4459 -.0003	.0002	6	.0104
2	5220-749-8328	4.5000-16UN-2A W	4.4576	4.4982 +.0009	4.4877 -.0009	4.4576 -.0003	.00015	8	.0078
2	5220-749-8329	4.5000-16UN-3A-3 W	4.4594	4.5000 +.0009	4.4895 -.0009	4.4594 -.0003	.00015	8	.0078

ORDER F. 40-1434, (07), R. 15 M. 63

MIL-STD-273B
-15 MARCH 1963

Table I. Tabulation of Design and Identification Data - Unified Standard Thread (Continued)

FIG. NO.	MARKING ON GAGE HANDLE			TRUNCATED THREAD SETTING PLUG GAGE DIMENSIONS					
	MIL-STD PART NUMBER	THREAD DESIGNATION	GO PITCH DIA	MAJOR DIA FULL PORTION	MAJOR DIA TRUNCATED PORTION	PITCH DIAMETER	TOL ON LEAD	HALF ANGLE TOL	ROOT CLEAR
A	B	C	D	E	F	G	H	J	K
2	7519163	4.6250-6UN-2A W	4.5136	4.6219 +.0013	4.6009 -.0013	4.5136 -.0003	.0003	5	.0208
2	7519164	4.6250-6UN-3A W	4.5167	4.6250 +.0013	4.6040 -.0013	4.5167 -.0003	.0003	5	.0208
2	7519165	4.6250-12UN-2A W	4.5689	4.6230 +.0009	4.6101 -.0009	4.5689 -.0003	.0002	6	.0104
2	7519166	4.6250-12UN-3A W	4.5709	4.6250 +.0009	4.6121 -.0009	4.5709 -.0003	.0002	6	.0104
2	7519167	4.6250-16UN-2A W	4.5826	4.6232 +.0009	4.6127 -.0009	4.5826 -.0003	.00015	8	.0078
2	7519168	4.6250-16UN-3A W	4.5844	4.6250 +.0009	4.6145 -.0009	4.5844 -.0003	.00015	8	.0078
2	7519169	4.7500-4UN-2A W	4.5841	4.7465 +.0015	4.7184 -.0015	4.5841 -.0003	.0003	4	.0312
2	7519170	4.7500-4UN-3A W	4.5876	4.7500 +.0015	4.7219 -.0015	4.5876 -.0003	.0003	4	.0312
2	7519171	4.7500-6UN-2A W	4.6386	4.7469 +.0013	4.7259 -.0013	4.6386 -.0003	.0003	5	.0208
2	7519172	4.7500-6UN-3A W	4.6417	4.7500 +.0013	4.7290 -.0013	4.6417 -.0003	.0003	5	.0208
2	5220-749-8332	4.7500-12UN-2A W	4.6939	4.7480 +.0009	4.7351 -.0009	4.6939 -.0003	.0002	6	.0104
2	5220-749-8333	4.7500-12UN-3A-3 W	4.6959	4.7500 +.0009	4.7371 -.0009	4.6959 -.0003	.0002	6	.0104
2	5220-749-8334	4.7500-16UN-2A W	4.7076	4.7482 +.0009	4.7377 -.0009	4.7076 -.0003	.00015	8	.0078
2	5220-749-8335	4.7500-16UN-3A-3 W	4.7094	4.7500 +.0009	4.7395 -.0009	4.7094 -.0003	.00015	8	.0078
2	7519173	4.8750-6UN-2A W	4.7636	4.8719 +.0013	4.8509 -.0013	4.7636 -.0003	.0003	5	.0208

MIL-STD-273B
15 MARCH 1963

Table I. Tabulation of Design and Identification Data - Unified Standard Thread (Continued)

FIG. NO.	MARKING ON GAGE HANDLE			TRUNCATED THREAD SETTING PLUG GAGE DIMENSIONS					
	MIL-STD PART NUMBER	THREAD DESIGNATION	GO PITCH DIA	MAJOR DIA FULL PORTION	MAJOR DIA TRUNCATED PORTION	PITCH DIAMETER	TOL ON LEAD	HALF ANGLE TOL	ROOT CLEAR
A	B	C	D	E	F	G	H	J	K
2	7519174	4.8750-6UN-3A W	4.7667	4.8750 +.0013	4.8540 -.0013	4.7667 -.0003	.0003	5	.0208
2	7519175	4.8750-12UN-2A W	4.8189	4.8730 +.0009	4.8601 -.0009	4.8189 -.0003	.0002	6	.0104
2	7519176	4.8750-12UN-3A W	4.8209	4.8750 +.0009	4.8621 -.0009	4.8209 -.0003	.0002	6	.0104
2	7519177	4.8750-16UN-2A W	4.8326	4.8732 +.0009	4.8627 -.0009	4.8326 -.0003	.00015	8	.0078
2	7519178	4.8750-16UN-3A W	4.8344	4.8750 +.0009	4.8645 -.0009	4.8344 -.0003	.00015	8	.0078
2	7519179	5.0000-4UN-2A W	4.8340	4.9964 +.0015	4.9683 -.0015	4.8340 -.0003	.0003	4	.0312
2	7519180	5.0000-4UN-3A W	4.8376	5.0000 +.0015	4.9719 -.0015	4.8376 -.0003	.0003	4	.0312
2	7519181	5.0000-6UN-2A W	4.8886	4.9969 +.0013	4.9759 -.0013	4.8886 -.0003	.0003	5	.0208
2	7519182	5.0000-6UN-3A W	4.8917	5.0000 +.0013	4.9790 -.0013	4.8917 -.0003	.0003	5	.0208
2	5220-749-8338	5.0000-12UN-2A W	4.9439	4.9980 +.0009	4.9851 -.0009	4.9439 -.0003	.0002	6	.0104
2	5220-749-8339	5.0000-12UN-3A-3 W	4.9459	5.0000 +.0009	4.9871 -.0009	4.9459 -.0003	.0002	6	.0104
2	5220-749-8340	5.0000-16UN-2A W	4.9576	4.9982 +.0009	4.9877 -.0009	4.9576 -.0003	.00015	8	.0078
2	5220-749-8341	5.0000-16UN-3A-3 W	4.9594	5.0000 +.0009	4.9895 -.0009	4.9594 -.0003	.00015	8	.0078
2	7519183	5.1250-12UN-2A W	5.0689	5.1230 +.0009	5.1101 -.0009	5.0689 -.0003	.0002	6	.0104
2	7519184	5.1250-12UN-3A W	5.0709	5.1250 +.0009	5.1121 -.0009	5.0709 -.0003	.0002	6	.0104

ORDBA FC 44-1434, 01, Rr 15 Mm 02

MIL-STD-273B
15 MARCH 1963

Table I. Tabulation of Design and Identification Data - Unified Standard Thread (Continued)

FIG. NO.	MARKING ON GAGE HANDLE			TRUNCATED THREAD SETTING PLUG GAGE DIMENSIONS					
	MIL-STD PART NUMBER	THREAD DESIGNATION	GO PITCH DIA	MAJOR DIA FULL PORTION	MAJOR DIA TRUNCATED PORTION	PITCH DIAMETER	TOL ON LEAD	HALF ANGLE TOL	ROOT CLEAR
A	B	C	D	E	F	G	H	J	K
2	7519185	5.1250-16UN-2A W	5.0826	5.1232 +.0009	5.1127 -.0009	5.0826 -.0003	.00015	8	.0078
2	7519186	5.1250-16UN-3A W	5.0844	5.1250 +.0009	5.1145 -.0009	5.0844 -.0003	.00015	8	.0078
2	7519187	5.2500-4UN-2A W	5.0840	5.2464 +.0015	5.2183 -.0015	5.0840 -.0003	.0003	4	.0312
2	7519188	5.2500-4UN-3A W	5.0876	5.2500 +.0015	5.2219 -.0015	5.0876 -.0003	.0003	4	.0312
2	5220-749-8344	5.2500-12UN-2A W	5.1939	5.2480 +.0009	5.2351 -.0009	5.1939 -.0003	.0002	6	.0104
2	5220-749-8345	5.2500-12UN-3A-3 W	5.1959	5.2500 +.0009	5.2371 -.0009	5.1959 -.0003	.0002	6	.0104
2	5220-749-8346	5.2500-16UN-2A W	5.2076	5.2482 +.0009	5.2377 -.0009	5.2076 -.0003	.00015	8	.0078
2	5220-749-8347	5.2500-16UN-3A-3 W	5.2094	5.2500 +.0009	5.2395 -.0009	5.2094 -.0003	.00015	8	.0078
2	7519189	5.3750-12UN-2A W	5.3189	5.3730 +.0009	5.3601 -.0009	5.3189 -.0003	.0002	6	.0104
2	7519190	5.3750-12UN-3A W	5.3209	5.3750 +.0009	5.3621 -.0009	5.3209 -.0003	.0002	6	.0104
2	7519191	5.3750-16UN-2A W	5.3326	5.3732 +.0009	5.3627 -.0009	5.3326 -.0003	.00015	8	.0078
2	7519192	5.3750-16UN-3A W	5.3344	5.3750 +.0009	5.3645 -.0009	5.3344 -.0003	.00015	8	.0078
2	7519193	5.5000-4UN-2A W	5.3340	5.4964 +.0015	5.4683 -.0015	5.3340 -.0003	.0003	4	.0312
2	7519194	5.5000-4UN-3A W	5.3376	5.5000 +.0015	5.4719 -.0015	5.3376 -.0003	.0003	4	.0312
2	5220-749-8350	5.5000-12UN-2A W	5.4439	5.4980 +.0009	5.4851 -.0009	5.4439 -.0003	.0002	6	.0104

MIL-STD-273B

15 MARCH 1963

Table I. Tabulation of Design and Identification Data - Unified Standard Thread (Continued)

FIG. NO.	MARKING ON GAGE HANDLE			TRUNCATED THREAD SETTING PLUG GAGE DIMENSIONS					
	MIL-STD PART NUMBER	THREAD DESIGNATION	GO PITCH DIA	MAJOR DIA FULL PORTION	MAJOR DIA TRUNCATED PORTION	PITCH DIAMETER	TOL ON LEAD	HALF ANGLE TOL	ROOT CLEAR
A	B	C	D	E	F	G	H	J	K
2	5220-749-8351	5.5000-12UN-3A-3 W	5.4459	5.5000 +.0009	5.4871 -.0009	5.4459 -.0003	.0002	6	.0104
2	5220-749-8352	5.5000-16UN-2A W	5.4576	5.4982 +.0009	5.4877 -.0009	5.4576 -.0003	.00015	8	.0078
2	5220-749-8353	5.5000-16UN-3A-3 W	5.4594	5.5000 +.0009	5.4895 -.0009	5.4594 -.0003	.00015	8	.0078
2	7519195	5.6250-12UN-2A W	5.5688	5.6229 +.0009	5.6100 -.0009	5.5688 -.0003	.0002	6	.0104
2	7519196	5.6250-12UN-3A W	5.5709	5.6250 +.0009	5.6121 -.0009	5.5709 -.0003	.0002	6	.0104
2	7519197	5.6250-16UN-2A W	5.5825	5.6231 +.0009	5.6126 -.0009	5.5825 -.0003	.00015	8	.0078
2	7519198	5.6250-16UN-3A W	5.5844	5.6250 +.0009	5.6145 -.0009	5.5844 -.0003	.00015	8	.0078
2	7519199	5.7500-4UN-2A W	5.5839	5.7463 +.0015	5.7182 -.0015	5.5839 -.0003	.0003	4	.0312
2	7519200	5.7500-4UN-3A W	5.5876	5.7500 +.0015	5.7219 -.0015	5.5876 -.0003	.0003	4	.0312
2	5220-749-8356	5.7500-12UN-2A W	5.6938	5.7479 +.0009	5.7350 -.0009	5.6938 -.0003	.0002	6	.0104
2	5220-749-8357	5.7500-12UN-3A-3 W	5.6959	5.7500 +.0009	5.7371 -.0009	5.6959 -.0003	.0002	6	.0104
2	5220-749-8358	5.7500-16UN-2A W	5.7075	5.7481 +.0009	5.7376 -.0009	5.7075 -.0003	.00015	8	.0078
2	5220-749-8359	5.7500-16UN-3A-3 W	5.7094	5.7500 +.0009	5.7395 -.0009	5.7094 -.0003	.00015	8	.0078
2	7519201	5.8750-12UN-2A W	5.8188	5.8729 +.0009	5.8600 -.0009	5.8188 -.0003	.0002	6	.0104
2	7519202	5.8750-12UN-3A W	5.8209	5.8750 +.0009	5.8621 -.0009	5.8209 -.0003	.0002	6	.0104

ORDBA Form 26-1474, (01) Rev 15 Mar 63

MIL-STD-273B
15 MARCH 1963

Table I. Tabulation of Design and Identification Data - Unified Standard Thread (Continued)

FIG. NO.	MARKING ON GAGE HANDLE			TRUNCATED THREAD SETTING PLUG GAGE DIMENSIONS					
	MIL-STD PART NUMBER	THREAD DESIGNATION	GO PITCH DIA	MAJOR DIA FULL PORTION	MAJOR DIA TRUNCATED PORTION	PITCH DIAMETER	TOL ON LEAD	HALF ANGLE TOL	ROOT CLEAR
A	B	C	D	E	F	G	H	J	K
2	7519203	5.8750-16UN-2A W	5.8325	5.8731 +.0009	5.8626 -.0009	5.8325 -.0003	.00015	8	.0078
2	7519204	5.8750-16UN-3A W	5.8344	5.8750 +.0009	5.8645 -.0009	5.8344 -.0003	.00015	8	.0078
2	7519205	6.0000-4UN-2A W	5.8339	5.9963 +.0015	5.9682 -.0015	5.8339 -.0003	.0003	4	.0312
2	7519206	6.0000-4UN-3A W	5.8376	6.0000 +.0015	5.9719 -.0015	5.8376 -.0003	.0003	4	.0312
2	5220-749-8362	6.0000-12UN-2A W	5.9438	5.9979 +.0009	5.9850 -.0009	5.9438 -.0003	.0002	6	.0104
2	5220-749-8363	6.0000-12UN-3A-3 W	5.9459	6.0000 +.0009	5.9871 -.0009	5.9459 -.0003	.0002	6	.0104
2	5220-749-8364	6.0000-16UN-2A W	5.9575	5.9981 +.0009	5.9876 -.0009	5.9575 -.0003	.00015	8	.0078
2	5220-749-8365	6.0000-16UN-3A-3 W	5.9594	6.0000 +.0009	5.9895 -.0009	5.9594 -.0003	.00015	8	.0078

67

MIL-STD-273B
15 MARCH 1963

Table II. Tabulation of Design and Identification Data - American National Standard Thread

FIG. NO.	MARKING ON GAGE HANDLE			TRUNCATED THREAD SETTING PLUG GAGE DIMENSIONS					
	MIL-STD PART NUMBER	THREAD DESIGNATION	GO PITCH DIA	MAJOR DIA FULL PORTION	MAJOR DIA TRUNCATED PORTION	PITCH DIAMETER	TOL ON LEAD	HALF ANGLE TOL	ROOT CLEAR
A	B	C	D	E	F	G	H	J	K
1	5220-749-8001	(0) .060-80UNF-3A-3 W	.0519	.0600 +.0003	.0566 -.0003	.0519 -.0001	.0001	20	.0016
1	5220-749-8003	(1) .073-64UNC-3A-3 W	.0629	.0730 +.0003	.0690 -.0003	.0629 -.0001	.0001	20	.0020
1	5220-749-8005	(1) .073-72UNF-3A-3 W	.0640	.0730 +.0003	.0693 -.0003	.0640 -.0001	.0001	20	.0017
1	5220-749-8007	(2) .086-56UNC-3A-3 W	.0744	.0860 +.0003	.0816 -.0003	.0744 -.0001	.0001	20	.0022
1	5220-749-8009	(2) .086-64UNF-3A-3 W	.0759	.0860 +.0003	.0820 -.0003	.0759 -.0001	.0001	20	.0020
1	5220-749-8011	(3) .099-48UNC-3A-3 W	.0855	.0990 +.0003	.0941 -.0003	.0855 -.0001	.0001	18	.0026
1	5220-749-8013	(3) .099-56UNF-3A-3 W	.0874	.0990 +.0003	.0946 -.0003	.0874 -.0001	.0001	20	.0022
1	5220-749-8015	(4) .112-40UNC-3A-3 W	.0958	.1120 +.0003	.1064 -.0003	.0958 -.0001	.0001	15	.0031
1	5220-749-8017	(4) .112-48UNF-3A-3 W	.0985	.1120 +.0003	.1071 -.0003	.0985 -.0001	.0001	18	.0026
1	5220-749-8019	(5) .125-40UNC-3A-3 W	.1088	.1250 +.0003	.1194 -.0003	.1088 -.0001	.0001	15	.0031
1	5220-749-8021	(5) .125-44UNF-3A-3 W	.1102	.1250 +.0003	.1198 -.0003	.1102 -.0001	.0001	15	.0028
1	5220-749-8023	(6) .138-32UNC-3A-3 W	.1177	.1380 +.0003	.1315 -.0003	.1177 -.0001	.0001	12	.0039
1	5220-749-8025	(6) .138-40UNF-3A-3 W	.1218	.1380 +.0003	.1324 -.0003	.1218 -.0001	.0001	15	.0031
1	5220-749-8027	(8) .164-32UNC-3A-3 W	.1437	.1640 +.0003	.1575 -.0003	.1437 -.0001	.0001	12	.0039
1	5220-749-8029	(8) .164-36UNF-3A-3 W	.1460	.1640 +.0003	.1580 -.0003	.1460 -.0001	.0001	12	.0035

MIL-STD-273B
15 MARCH 1963

Table II. Tabulation of Design and Identification Data - American National Standard Thread (Continued)

FIG. NO.	MARKING ON GAGE HANDLE			TRUNCATED THREAD SETTING PLUG GAGE DIMENSIONS					
	MIL-STD PART NUMBER	THREAD DESIGNATION	GO PITCH DIA	MAJOR DIA FULL PORTION	MAJOR DIA TRUNCATED PORTION	PITCH DIAMETER	TOL ON LEAD	HALF ANGLE TOL	ROOT CLEAR
A	B	C	D	E	F	G	H	J	K
1	5220-749-8031	(10) .190-24UNC-3A-3 W	.1629	.1900 +.0005	.1821 -.0005	.1629 -.0001	.00015	8	.0052
1	5220-749-8033	(10) .190-32UNF-3A-3 W	.1697	.1900 +.0003	.1835 -.0003	.1697 -.0001	.0001	12	.0039
1	5220-749-8035	(12) .216-24UNC-3A-3 W	.1889	.2160 +.0005	.2081 -.0005	.1889 -.0001	.00015	8	.0052
1	5220-749-8037	(12) .216-28UNF-3A-3 W	.1928	.2160 +.0005	.2089 -.0005	.1928 -.0001	.00015	8	.0045
1	5220-751-6781	(12) .216-32UNEF-3A-3W	.1957	.2160 +.0003	.2095 -.0003	.1957 -.0001	.0001	12	.0039
1	5220-749-8039	.2500-20UNC-3A-3 W	.2175	.2500 +.0005	.2410 -.0005	.2175 -.0001	.00015	8	.0062
1	5220-749-8041	.2500-28UNF-3A-3 W	.2268	.2500 +.0005	.2429 -.0005	.2268 -.0001	.00015	8	.0045
1	5220-749-8043	.2500-32UNEF-3A-3 W	.2297	.2500 +.0003	.2435 -.0003	.2297 -.0001	.0001	12	.0039
1	5220-749-8045	.3125-18UNC-3A-3 W	.2764	.3125 +.0005	.3028 -.0005	.2764 -.0001	.00015	8	.0069
1	5220-749-8047	.3125-24UNF-3A-3 W	.2854	.3125 +.0005	.3046 -.0005	.2854 -.0001	.00015	8	.0052
1	5220-749-8049	.3125-32UNEF-3A-3 W	.2922	.3125 +.0003	.3060 -.0003	.2922 -.0001	.0001	12	.0039
1	5220-749-8051	.3750-16UNC-3A-3 W	.3344	.3750 +.0006	.3645 -.0006	.3344 -.0001	.00015	8	.0078
1	5220-749-8053	.3750-24UNF-3A-3 W	.3479	.3750 +.0005	.3671 -.0005	.3479 -.0001	.00015	8	.0052
1	5220-749-8055	.3750-32UNEF-3A-3 W	.3547	.3750 +.0003	.3685 -.0003	.3547 -.0001	.0001	12	.0039
1	5220-749-8057	.4375-14UNC-3A-3 W	.3911	.4375 +.0006	.4260 -.0006	.3911 -.00015	.0002	6	.0089

MIL-STD-273B
15 MARCH 1963

Table II. Tabulation of Design and Identification Data - American National Standard Thread (Continued)

FIG. NO.	MARKING ON GAGE HANDLE			TRUNCATED THREAD SETTING PLUG GAGE DIMENSIONS					
	MIL-STD PART NUMBER	THREAD DESIGNATION	GO PITCH DIA	MAJOR DIA FULL PORTION	MAJOR DIA TRUNCATED PORTION	PITCH DIAMETER	TOL ON LEAD	HALF ANGLE TOL	ROOT CLEAR
A	B	C	D	E	F	G	H	J	K
1	5220-749-8059	.4375-20UNF-3A-3 W	.4050	.4375 +.0005	.4285 -.0005	.4050 -.0001	.00015	8	.0062
1	5220-749-8061	.4375-28UNEF-3A-3 W	.4143	.4375 +.0005	.4304 -.0005	.4143 -.0001	.00015	8	.0045
1	5220-749-8062	.5000-12N-3 W	.4459	.5000 +.0006	.4871 -.0006	.44590-.00015	.0002	6	.0104
1	5220-749-8064	.5000-13UNC-3A-3 W	.4500	.5000 +.0006	.4878 -.0006	.45000-.00015	.0002	6	.0096
1	5220-749-8066	.5000-20UNF-3A-3 W	.4675	.5000 +.0005	.4910 -.0005	.4675 -.0001	.00015	8	.0062
1	5220-749-8068	.5000-28UNEF-3A-3 W	.4768	.5000 +.0005	.4929 -.0005	.4768 -.0001	.00015	8	.0045
1	5220-749-8070	.5625-12UNC-3A-3 W	.5084	.5625 +.0006	.5496 -.0006	.5084 -.0002	.0002	6	.0104
1	5220-749-8072	.5625-18UNF-3A-3 W	.5264	.5625 +.0005	.5528 -.0005	.52640-.00015	.00015	8	.0069
1	5220-749-8074	.5625-24UNEF-3A-3 W	.5354	.5625 +.0005	.5546 -.0005	.53540-.00015	.00015	8	.0052
1	5220-749-8076	.6250-11UNC-3A-3 W	.5660	.6250 +.0006	.6113 -.0006	.5660 -.0002	.0002	6	.0114
1	5220-749-8077	.6250-12UN-3A-3 W	.5079	.6250 +.0006	.6121 -.0006	.5709 -.0002	.0002	6	.0104
1	5220-749-8079	.6250-18UNF-3A-3 W	.5889	.6250 +.0005	.6153 -.0005	.58890-.00015	.00015	8	.0069
1	5220-749-8081	.6250-24UNEF-3A-3 W	.5979	.6250 +.0005	.6171 -.0005	.59790-.00015	.00015	8	.0052
1	5220-749-8082	.6875-12UN-3A-3 W	.6334	.6875 +.0006	.6746 -.0006	.6334 -.0002	.0002	6	.0104
1	5220-749-8084	.6875-24UNEF-3A-3 W	.6604	.6875 +.0005	.6796 -.0005	.66040-.00015	.00015	8	.0052

MIL-STD-273B
15 MARCH 1963

Table II. Tabulation of Design and Identification Data - American National Standard Thread (Continued)

FIG. NO.	MARKING ON GAGE HANDLE			TRUNCATED THREAD SETTING PLUG GAGE DIMENSIONS					
	MIL-STD PART NUMBER	THREAD DESIGNATION	GO PITCH DIA	MAJOR DIA FULL PORTION	MAJOR DIA TRUNCATED PORTION	PITCH DIAMETER	TOL ON LEAD	HALF ANGLE TOL	ROOT CLEAR
A	B	C	D	E	F	G	H	J	K
1	5220-749-8086	.7500-10UNC-3A-3 W	.6850	.7500 +.0006	.7354 -.0006	.6850 -.0002	.00025	6	.0125
1	5220-749-8087	.7500-12UN-3A-3 W	.6959	.7500 +.0006	.7371 -.0006	.6959 -.0002	.0002	6	.0104
1	5220-749-8089	.7500-16UNF-3A-3 W	.7094	.7500 +.0006	.7395 -.0006	.7094 -.0002	.00015	8	.0078
1	5220-749-8091	.7500-20UNEF-3A-3 W	.7175	.7500 +.0005	.7410 -.0005	.71750 -.00015	.00015	8	.0062
1	5220-749-8092	.8125-12UN-3A-3 W	.7584	.8125 +.0006	.7996 -.0006	.7584 -.0002	.0002	6	.0104
1	5220-749-8093	.8125-16UN-3A-3 W	.7719	.8125 +.0006	.8020 -.0006	.7719 -.0002	.00015	8	.0078
1	5220-749-8095	.8125-20UNEF-3A-3 W	.7800	.8125 +.0005	.8035 -.0005	.78000 -.00015	.00015	8	.0062
1	5220-749-8097	.8750-9UNC-3A-3 W	.8028	.8750 +.0007	.8592 -.0007	.8028 -.0002	.00025	6	.0139
1	5220-749-8098	.8750-12UN-3A-3 W	.8209	.8750 +.0006	.8621 -.0006	.8209 -.0002	.0002	6	.0104
1	5220-749-8100	.8750-14UNF-3A-3 W	.8286	.8750 +.0006	.8635 -.0006	.8286 -.0002	.0002	6	.0089
1	5220-749-8101	.8750-16UN-3A-3 W	.8344	.8750 +.0006	.8645 -.0006	.8344 -.0002	.00015	8	.0078
1	5220-749-8103	.8750-20UNEF-3A-3 W	.8425	.8750 +.0005	.8660 -.0005	.84250 -.00015	.00015	8	.0062
1	5220-749-8104	.9375-12UN-3A-3 W	.8834	.9375 +.0005	.9246 -.0006	.8834 -.0002	.0002	6	.0104
1	5220-749-8105	.9375-16UN-3A-3 W	.8969	.9375 +.0006	.9270 -.0006	.8969 -.0002	.00015	8	.0078
1	5220-749-8107	.9375-20UNEF-3A-3 W	.9050	.9375 +.0005	.9285 -.0005	.90500 -.00015	.00015	8	.0062

ORDBA F. 26-14.4, (01) R. 15 M. 0.1

MIL-STD-273B
15 MARCH 1963

Table II. Tabulation of Design and Identification Data - American National Standard Thread (Continued)

FIG. NO.	MARKING ON GAGE HANDLE			TRUNCATED THREAD SETTING PLUG GAGE DIMENSIONS					
	MIL-STD PART NUMBER	THREAD DESIGNATION	GO PITCH DIA	MAJOR DIA FULL PORTION	MAJOR DIA TRUNCATED PORTION	PITCH DIAMETER	TOL ON LEAD	HALF ANGLE TOL	ROOT CLEAR
A	B	C	D	E	F	G	H	J	K
1	5220-749-8109	1.0000-8UNC-3A-3 W	.9188	1.0000 +.0007	.9829 -.0007	.9188 -.0002	.00025	5	.0156
1	5220-749-8111	1.0000-12UNF-3A,N-3 W	.9459	1.0000 +.0006	.9871 -.0006	.9459 -.0002	.0002	6	.0104
1	5220-749-8114	1.0000-16UN-3A-3 W	.9594	1.0000 +.0006	.9895 -.0005	.9594 -.0002	.00015	8	.0078
1	5220-749-8116	1.0000-20UNEF-3A-3 W	.9675	1.0000 +.0005	.9910 -.0005	.96750 -.00015	.00015	8	.0062
1	5220-749-8118	1.0625-12UN-3A-3 W	1.0084	1.0625 +.0006	1.0496 -.0006	1.0084 -.0002	.0002	6	.0104
1	5220-749-8119	1.0625-16UN-3A-3 W	1.0219	1.0625 +.0006	1.0520 -.0006	1.0219 -.0002	.00015	8	.0078
1	5220-749-8121	1.0625-18UNEF-3A-3 W	1.0264	1.0625 +.0005	1.0528 -.0005	1.02640 -.00015	.00015	8	.0069
1	5220-749-8123	1.1250-7UNC-3A-3 W	1.0322	1.1250 +.0007	1.1062 -.0007	1.0322 -.0002	.0003	5	.0179
1	5220-749-8125	1.1250-8UN-3A-3 W	1.0438	1.1250 +.0007	1.1079 -.0007	1.0438 -.0002	.00025	5	.0156
1	5220-749-8127	1.1250-12UNF-3A-3 W	1.0709	1.1250 +.0006	1.1121 -.0006	1.0709 -.0002	.0002	6	.0104
1	5220-749-8128	1.1250-16UN-3A-3 W	1.0844	1.1250 +.0006	1.1145 -.0006	1.0844 -.0002	.00015	8	.0078
1	5220-749-8130	1.1250-18UNEF-3A-3 W	1.0889	1.1250 +.0005	1.1153 -.0005	1.08890 -.00015	.00015	8	.0069
1	5220-749-8132	1.1875-12UN-3A-3 W	1.1334	1.1875 +.0006	1.1746 -.0006	1.1334 -.0002	.0002	6	.0104
1	5220-749-8133	1.1875-16UN-3A-3 W	1.1469	1.1875 +.0006	1.1770 -.0006	1.1469 -.0002	.00015	8	.0078
1	5220-749-8135	1.1875-18UNEF-3A-3 W	1.1514	1.1875 +.0005	1.1778 -.0005	1.15140 -.00015	.00015	8	.0069

MIL-STD 2732

15 MARCH 1963

Table II. Tabulation of Design and Identification Data - American National Standard Thread (Continued)

FIG. NO.	MARKING ON GAGE HANDLE			TRUNCATED THREAD SETTING PLUG GAGE DIMENSIONS					
	MIL-STD PART NUMBER	THREAD DESIGNATION	GO PITCH DIA	MAJOR DIA FULL PORTION	MAJOR DIA TRUNCATED PORTION	PITCH DIAMETER	TOL ON LEAD	HALF ANGLE TOL	ROOT CLEAR
A	B	C	D	E	F	G	H	J	K
1	5220-749-8137	1.2500-7UNC-3A-3 W	1.1572	1.2500 +.0007	1.2312 -.0007	1.1572 -.0002	.0003	5	.0179
1	5220-749-8139	1.2500-8UN-3A-3 W	1.1688	1.2500 +.0007	1.2329 -.0007	1.1688 -.0002	.00025	5	.0156
1	5220-749-8141	1.2500-12UNF-3A-3 W	1.1959	1.2500 +.0006	1.2371 -.0006	1.1959 -.0002	.0002	6	.0104
1	5220-749-8142	1.2500-16UN-3A-3 W	1.2094	1.2500 +.0006	1.2395 -.0006	1.2094 -.0002	.00015	8	.0078
1	5220-749-8144	1.2500-18UNEF-3A-3 W	1.2139	1.2500 +.0005	1.2403 -.0005	1.21390 -.00015	.00015	8	.0069
1	5220-749-8146	1.3125-12UN-3A-3 W	1.2584	1.3125 +.0006	1.2996 -.0006	1.2584 -.0002	.0002	6	.0104
1	5220-749-8147	1.3125-16UN-3A-3 W	1.2719	1.3125 +.0006	1.3020 -.0006	1.2719 -.0002	.00015	8	.0078
1	5220-749-8149	1.3125-18UNEF-3A-3 W	1.2764	1.3125 +.0005	1.3028 -.0005	1.27640 -.00015	.00015	8	.0069
1	5220-749-8151	1.3750-6UNC-3A-3 W	1.2667	1.3750 +.0008	1.3540 -.0003	1.2667 -.0002	.0003	5	.0208
1	5220-749-8153	1.3750-8UN-3A-3 W	1.2938	1.3750 +.0007	1.3579 -.0007	1.2938 -.0002	.00025	5	.0156
1	5220-749-8155	1.3750-12UNF-3A-3 W	1.3209	1.3750 +.0006	1.3621 -.0006	1.3209 -.0002	.0002	6	.0104
1	5220-749-8156	1.3750-16UN-3A-3 W	1.3344	1.3750 +.0006	1.3645 -.0006	1.3344 -.0002	.00015	8	.0078
1	5220-749-8158	1.3750-18UNEF-3A-3 W	1.3389	1.3750 +.0005	1.3653 -.0005	1.33890 -.00015	.00015	8	.0069
1	5220-749-8160	1.4375-12UN-3A-3 W	1.3834	1.4375 +.0006	1.4246 -.0006	1.3834 -.0002	.0002	6	.0104
1	5220-749-8161	1.4375-16UN-3A-3 W	1.3969	1.4375 +.0006	1.4270 -.0006	1.3969 -.0002	.00015	8	.0078

ORDBA Form 40-1434, OCT. 1955, Rev. 15 Mar 63

MIL-STD-2738
15 MARCH 1963

Table II. Tabulation of Design and Identification Data - American National Standard Thread (Continued)

FIG. NO.	MARKING ON GAGE HANDLE			TRUNCATED THREAD SETTING PLUG GAGE DIMENSIONS					
	MIL-STD PART NUMBER	THREAD DESIGNATION	GO PITCH DIA	MAJOR DIA FULL PORTION	MAJOR DIA TRUNCATED PORTION	PITCH DIAMETER	TOL ON LEAD	HALF ANGLE TOL	ROOT CLEAR
A	B	C	D	E	F	G	H	J	K
1	5220-749-8163	1.4375-18UNEF-3A-3 W	1.4014	1.4375 +.0005	1.4278 -.0005	1.40140 -.00015	.00015	8	.0069
1	5220-749-8165	1.5000-6UNC-3A-3 W	1.3917	1.5000 +.0008	1.4790 -.0008	1.3917 -.0002	.0003	5	.0208
1	5220-749-8167	1.5000-8UN-3A-3 W	1.4188	1.5000 +.0007	1.4829 -.0007	1.4188 -.0002	.00025	5	.0156
1	5220-749-8169	1.5000-12UNF-3A-3 W	1.4459	1.5000 +.0006	1.4871 -.0006	1.4459 -.0002	.0002	6	.0104
1	5220-749-8170	1.5000-16UN-3A-3 W	1.4594	1.5000 +.0006	1.4895 -.0006	1.4594 -.0002	.00015	8	.0078
1	5220-749-8172	1.5000-18UNEF-3A-3 W	1.4639	1.5000 +.0005	1.4903 -.0005	1.46390 -.00015	.00015	8	.0069
2	5220-749-8173	1.5625-16UN-3A-3 W	1.5219	1.5625 +.0006	1.5520 -.0006	1.52190 -.00025	.00015	8	.0078
2	5220-749-8175	1.5625-18UNEF-3A-3 W	1.5264	1.5625 +.0005	1.5528 -.0005	1.5264 -.0002	.00015	8	.0069
2	5220-749-8177	1.6250-8UN-3A-3 W	1.5438	1.6250 +.0007	1.6079 -.0007	1.54380 -.00025	.00025	5	.0156
2	5220-749-8179	1.6250-12UN-3A-3 W	1.5709	1.6250 +.0006	1.6121 -.0006	1.57090 -.00025	.0002	6	.0104
2	5220-749-8180	1.6250-16UN-3A-3 W	1.5844	1.6250 +.0006	1.6145 -.0006	1.58440 -.00025	.00015	8	.0078
2	5220-749-8182	1.6250-18UNEF-3A-3 W	1.5889	1.6250 +.0005	1.6153 -.0005	1.5889 -.0002	.00015	8	.0069
2	5220-749-8183	1.6875-16UN-3A-3 W	1.6469	1.6875 +.0006	1.6770 -.0006	1.64690 -.00025	.00015	8	.0078
2	5220-749-8185	1.6875-18UNEF-3A-3 W	1.6514	1.6875 +.0005	1.6778 -.0005	1.6514 -.0002	.00015	8	.0069
2	5220-749-8187	1.7500-5UNC-3A-3 W	1.6201	1.7500 +.0008	1.7261 -.0008	1.62010 -.00025	.0003	4	.0250

MIL-STD-273B
15 MARCH 1963

Table II. Tabulation of Design and Identification Data - American National Standard Thread (Continued)

FIG. NO.	MARKING ON GAGE HANDLE			TRUNCATED THREAD SETTING PLUG GAGE DIMENSIONS					
	MIL-STD PART NUMBER	THREAD DESIGNATION	GO PITCH DIA	MAJOR DIA FULL PORTION	MAJOR DIA TRUNCATED PORTION	PITCH DIAMETER	TOL ON LEAD	HALF ANGLE TOL	ROOT CLEAR
A	B	C	D	E	F	G	H	J	K
2	5220-749-8189	1.7500-8UN-3A-3 W	1.6688	1.7500 +.0007	1.7329 -.0007	1.66880 -.00025	.00025	5	.0156
2	5220-749-8191	1.7500-12UN-3A-3 W	1.6959	1.7500 +.0006	1.7371 -.0006	1.69390 -.00025	.0002	6	.0104
2	5220-749-8193	1.7500-16UN-3A,NEF-3 W	1.7094	1.7500 +.0006	1.7395 -.0006	1.70940 -.00025	.00015	8	.0078
2	5220-749-8195	1.8125-16UN-3A-3 W	1.7719	1.8125 +.0006	1.8020 -.0006	1.77190 -.00025	.00015	8	.0078
2	5220-749-8197	1.8750-8UN-3A-3 W	1.7938	1.8750 +.0007	1.8579 -.0007	1.79380 -.00025	.00025	5	.0156
2	5220-749-8199	1.8750-12UN-3A-3 W	1.8209	1.8750 +.0006	1.8621 -.0006	1.82090 -.00025	.0002	6	.0104
2	5220-749-8201	1.8750-16UN-3A-3 W	1.8344	1.8750 +.0006	1.8645 -.0006	1.83440 -.00025	.00015	8	.0078
2	5220-749-8203	1.9375-16UN-3A-3 W	1.8969	1.9375 +.0006	1.9270 -.0006	1.89690 -.00025	.00015	8	.0078
2	5220-749-8205	2.0000-4-1/2UNC-3A-3 W	1.8557	2.0000 +.0008	1.9742 -.0008	1.85570 -.00025	.0003	4	.0278
2	5220-749-8207	2.0000-8UN-3A-3 W	1.9188	2.0000 +.0007	1.9829 -.0007	1.91880 -.00025	.00025	5	.0156
2	5220-749-8209	2.0000-12UN-3A-3 W	1.9459	2.0000 +.0006	1.9871 -.0006	1.94590 -.00025	.0002	6	.0104
2	5220-749-8211	2.0000-16UN-3A,NEF-3 W	1.9594	2.0000 +.0006	1.9895 -.0006	1.95940 -.00025	.00015	8	.0078
2	5220-749-8213	2.0625-16N-3 W	2.0219	2.0625 +.0006	2.0520 -.0006	2.02190 -.00025	.00015	8	.0078
2	5220-749-8215	2.1250-8UN-3A-3 W	2.0438	2.1250 +.0007	2.1079 -.0007	2.04380 -.00025	.00025	5	.0156
2	5220-749-8217	2.1250-12UN-3A-3 W	2.0709	2.1250 +.0006	2.1121 -.0006	2.07090 -.00025	.0002	6	.0104

MIL-STD-273B
15 MARCH 1963

Table II. Tabulation of Design and Identification Data - American National Standard Thread (Continued)

FIG. NO.	MARKING ON GAGE HANDLE			TRUNCATED THREAD SETTING PLUG GAGE DIMENSIONS					
	MIL-STD PART NUMBER	THREAD DESIGNATION	GO PITCH DIA	MAJOR DIA FULL PORTION	MAJOR DIA TRUNCATED PORTION	PITCH DIAMETER	TOL ON LEAD	HALF ANGLE TOL	ROOT CLEAR
A	B	C	D	E	F	G	H	J	K
2	5220-749-8219	2.1250-16UN-3A-3 W	2.0844	2.1250 +.0006	2.1145 -.0006	2.08440 -.00025	.00015	8	.0078
2	5220-749-8221	2.1875-16N-3 W	2.1469	2.1875 +.0006	2.1770 -.0006	2.14690 -.00025	.00015	8	.0078
2	5220-749-8223	2.2500-4 $\frac{1}{2}$ UNC-3A-3 W	2.1057	2.2500 +.0008	2.2242 -.0008	2.10570 -.00025	.0003	4	.0278
2	5220-749-8225	2.2500-8UN-3A-3 W	2.1688	2.2500 +.0007	2.2329 -.0007	2.16880 -.00025	.00025	5	.0156
2	5220-749-8227	2.2500-12UN-3A-3 W	2.1959	2.2500 +.0006	2.2371 -.0006	2.19590 -.00025	.0002	6	.0104
2	5220-749-8229	2.2500-16UN-3A-3 W	2.2094	2.2500 +.0006	2.2395 -.0006	2.20940 -.00025	.00015	8	.0078
2	5220-749-8231	2.3125-16N-3 W	2.2719	2.3125 +.0006	2.3020 -.0006	2.27190 -.00025	.00015	8	.0078
2	5220-749-8233	2.3750-12UN-3A-3 W	2.3209	2.3750 +.0006	2.3621 -.0006	2.32090 -.00025	.0002	6	.0104
2	5220-749-8235	2.3750-16UN-3A-3 W	2.3344	2.3750 +.0006	2.3645 -.0006	2.33440 -.00025	.00015	8	.0078
2	5220-749-8237	2.4375-16N-3 W	2.3969	2.4375 +.0006	2.4270 -.0006	2.39690 -.00025	.00015	8	.0078
2	5220-749-8239	2.5000-4UNC-3A-3 W	2.3376	2.5000 +.0009	2.4719 -.0009	2.33760 -.00025	.0003	4	.0312
2	5220-749-8241	2.5000-8UN-3A-3 W	2.4188	2.5000 +.0007	2.4829 -.0007	2.41880 -.00025	.00025	5	.0156
2	5220-749-8243	2.5000-12UN-3A-3 W	2.4459	2.5000 +.0006	2.4871 -.0006	2.44590 -.00025	.0002	6	.0104
2	5220-749-8245	2.5000-16UN-3A-3 W	2.4594	2.5000 +.0006	2.4895 -.0006	2.45940 -.00025	.00015	8	.0078
2	5220-749-8247	2.6250-12UN-3A-3 W	2.5709	2.6250 +.0006	2.6121 -.0006	2.57090 -.00025	.0002	6	.0104

MIL-STD-273B
15 MARCH 1968

Table II. Tabulation of Design and Identification Data - American National Standard Thread (Continued)

FIG. NO.	MARKING ON GAGE HANDLE			TRUNCATED THREAD SETTING PLUG GAGE DIMENSIONS					
	MIL-STD PART NUMBER	THREAD DESIGNATION	GO PITCH DIA	MAJOR DIA FULL PORTION	MAJOR DIA TRUNCATED PORTION	PITCH DIAMETER	TOL ON LEAD	HALF ANGLE TOL	ROOT CLEAR
A	B	C	D	E	F	G	H	J	K
2	5220-749-8249	2.6250-16UN-3A-3 W	2.5844	2.6250 +.0006	2.6145 -.0006	2.58440 -.00025	.00015	8	.0078
2	5220-749-8251	2.7500-4UNC-3A-3 W	2.5876	2.7500 +.0009	2.7219 -.0009	2.58760 -.00025	.0003	4	.0312
2	5220-749-8253	2.7500-8UN-3A-3 W	2.6688	2.7500 +.0007	2.7329 -.0007	2.66880 -.00025	.00025	5	.0156
2	5220-749-8255	2.7500-12UN-3A-3 W	2.6959	2.7500 +.0006	2.7371 -.0006	2.69590 -.00025	.0002	6	.0104
2	5220-749-8257	2.7500-16UN-3A-3 W	2.7094	2.7500 +.0006	2.7395 -.0006	2.70940 -.00025	.00015	8	.0078
2	5220-749-8259	2.8750-12UN-3A-3 W	2.8209	2.8750 +.0006	2.8621 -.0006	2.82090 -.00025	.0002	6	.0104
2	5220-749-8261	2.8750-16UN-3A-3 W	2.8344	2.8750 +.0006	2.8645 -.0006	2.83440 -.00025	.00015	8	.0078
2	5220-749-8263	3.0000-4UNC-3A-3 W	2.8376	3.0000 +.0009	2.9719 -.0009	2.83760 -.00025	.0003	4	.0312
2	5220-749-8265	3.0000-8UN-3A-3 W	2.9188	3.0000 +.0007	2.9829 -.0007	2.91880 -.00025	.00025	5	.0156
2	5220-749-8267	3.0000-12UN-3A-3 W	2.9459	3.0000 +.0006	2.9871 -.0006	2.94590 -.00025	.0002	6	.0104
2	5220-749-8269	3.0000-16UN-3A-3 W	2.9594	3.0000 +.0006	2.9895 -.0006	2.95940 -.00025	.00015	8	.0078
2	5220-749-8271	3.1250-12UN-3A-3 W	3.0709	3.1250 +.0006	3.1121 -.0006	3.07090 -.00025	.0002	6	.0104
2	5220-749-8273	3.1250-16UN-3A-3 W	3.0844	3.1250 +.0006	3.1145 -.0006	3.08440 -.00025	.00015	8	.0078
2	5220-749-8275	3.2500-4UNC-3A-3 W	3.0876	3.2500 +.0009	3.2219 -.0009	3.08760 -.00025	.0003	4	.0312
2	5220-749-8277	3.2500-8UN-3A-3 W	3.1688	3.2500 +.0007	3.2329 -.0007	3.16880 -.00025	.00025	5	.0156

ORDIN Form 20-1514, (OT) Rev. 15 Mar. 61

MIL-STD-273B
15 MARCH 1963

Table II. Tabulation of Design and Identification Data - American National Standard Thread (Continued)

FIG. NO.	MARKING ON GAGE HANDLE			TRUNCATED THREAD SETTING PLUG GAGE DIMENSIONS					
	MIL-STD PART NUMBER	THREAD DESIGNATION	GO PITCH DIA	MAJOR DIA FULL PORTION	MAJOR DIA TRUNCATED PORTION	PITCH DIAMETER	TOL ON LEAD	HALF ANGLE TOL	ROOT CLEAR
A	B	C	D	E	F	G	H	J	K
2	5220-749-8279	3.2500-12UN-3A-3 W	3.1959	3.2500 +.0006	3.2371 -.0006	3.19590 -.00025	.0002	6	.0104
2	5220-749-8281	3.2500-16UN-3A-3 W	3.2094	3.2500 +.0006	3.2395 -.0006	3.20940 -.00025	.00015	8	.0078
2	5220-749-8283	3.3750-12UN-3A-3 W	3.3209	3.3750 +.0006	3.3621 -.0006	3.32090 -.00025	.0002	6	.0104
2	5220-749-8285	3.3750-16UN-3A-3 W	3.3344	3.3750 +.0006	3.3645 -.0006	3.33440 -.00025	.00015	8	.0078
2	5220-749-8287	3.5000-4UNC-3A-3 W	3.3376	3.5000 +.0009	3.4719 -.0009	3.33760 -.00025	.0003	4	.0312
2	5220-749-8289	3.5000-8UN-3A-3 W	3.4188	3.5000 +.0007	3.4829 -.0007	3.41880 -.00025	.00025	5	.0156
2	5220-749-8291	3.5000-12UN-3A-3 W	3.4459	3.5000 +.0006	3.4871 -.0006	3.44590 -.00025	.0002	6	.0104
2	5220-749-8293	3.5000-16UN-3A-3 W	3.4594	3.5000 +.0006	3.4895 -.0006	3.45940 -.00025	.00015	8	.0078
2	5220-749-8295	3.6250-12UN-3A-3 W	3.5709	3.6250 +.0006	3.6121 -.0006	3.57090 -.00025	.0002	6	.0104
2	5220-749-8297	3.6250-16UN-3A-3 W	3.5844	3.6250 +.0006	3.6145 -.0006	3.58440 -.00025	.00015	8	.0078
2	5220-749-8299	3.7500-4UNC-3A-3 W	3.5876	3.7500 +.0009	3.7219 -.0009	3.58760 -.00025	.0003	4	.0312
2	5220-749-8301	3.7500-8UN-3A-3 W	3.6688	3.7500 +.0007	3.7329 -.0007	3.66880 -.00025	.00025	5	.0156
2	5220-749-8303	3.7500-12UN-3A-3 W	3.6959	3.7500 +.0006	3.7371 -.0006	3.69590 -.00025	.0002	6	.0104
2	5220-749-8305	3.7500-16UN-3A-3 W	3.7094	3.7500 +.0006	3.7395 -.0006	3.70940 -.00025	.00015	8	.0078
2	5220-749-8307	3.8750-12UN-3A-3 W	3.8209	3.8750 +.0006	3.8621 -.0006	3.82090 -.00025	.0002	6	.0104

MIL-STD-273B
15 MARCH 1968

Table II. Tabulation of Design and Identification Data - American National Standard Thread (Continued)

FIG. NO.	MARKING ON GAGE HANDLE			TRUNCATED THREAD SETTING PLUG GAGE DIMENSIONS					
	MIL-STD PART NUMBER	THREAD DESIGNATION	GO PITCH DIA	MAJOR DIA FULL PORTION	MAJOR DIA TRUNCATED PORTION	PITCH DIAMETER	TOL ON LEAD	HALF ANGLE TOL	ROOT CLEAR
A	B	C	D	E	F	G	H	J	K
2	5220-749-8309	3.8750-16UN-3A-3 W	3.8344	3.8750 +.0006	3.8645 -.0006	3.83440 -.00025	.00015	8	.0078
2	5220-749-8311	4.0000-4UNC-3A-3 W	3.8376	4.0000 +.0009	3.9719 -.0009	3.83760 -.00025	.0003	4	.0312
2	5220-749-8313	4.0000-8UN-3A-3 W	3.9188	4.0000 +.0007	3.9829 -.0007	3.91880 -.00025	.00025	5	.0156
2	5220-749-8315	4.0000-12UN-3A-3 W	3.9459	4.0000 +.0006	3.9871 -.0006	3.94590 -.00025	.0002	6	.0104
2	5220-749-8317	4.0000-16UN-3A-3 W	3.9594	4.0000 +.0006	3.9895 -.0006	3.95940 -.00025	.00015	8	.0078
2	5220-749-8319	4.2500-8N-3 W	4.1688	4.2500 +.0011	4.2329 -.0011	4.1688 -.0003	.00025	5	.0156
2	5220-749-8321	4.2500-12UN-3A-3 W	4.1959	4.2500 +.0009	4.2371 -.0009	4.1959 -.0003	.0002	6	.0104
2	5220-749-8323	4.2500-16UN-3A-3 W	4.2094	4.2500 +.0009	4.2395 -.0009	4.2094 -.0003	.00015	8	.0078
2	5220-749-8325	4.5000-8N-3 W	4.4188	4.5000 +.0011	4.4829 -.0011	4.4188 -.0003	.00025	5	.0156
2	5220-749-8327	4.5000-12UN-3A-3 W	4.4459	4.5000 +.0009	4.4871 -.0009	4.4459 -.0003	.0002	6	.0104
2	5220-749-8329	4.5000-16UN-3A-3 W	4.4594	4.5000 +.0009	4.4895 -.0009	4.4594 -.0003	.00015	8	.0078
2	5220-749-8331	4.7500-8N-3 W	4.6688	4.7500 +.0011	4.7329 -.0011	4.6688 -.0003	.00025	5	.0156
2	5220-749-8333	4.7500-12UN-3A-3 W	4.6959	4.7500 +.0009	4.7371 -.0009	4.6959 -.0003	.0002	6	.0104
2	5220-749-8335	4.7500-16UN-3A-3 W	4.7094	4.7500 +.0009	4.7395 -.0009	4.7094 -.0003	.00015	8	.0078
2	5220-749-8337	5.0000-8N-3 W	4.9188	5.0000 +.0011	4.9829 -.0011	4.9188 -.0003	.00025	5	.0156

MIL-STD-273B
15 MARCH 1963

Table II. Tabulation of Design and Identification Data - American National Standard Thread (Continued)

FIG. NO.	MARKING ON GAGE HANDLE			TRUNCATED THREAD SETTING PLUG GAGE DIMENSIONS					
	MIL-STD PART NUMBER	THREAD DESIGNATION	GO PITCH DIA	MAJOR DIA FULL PORTION	MAJOR DIA TRUNCATED PORTION	PITCH DIAMETER	TOL ON LEAD	HALF ANGLE TOL	ROOT CLEAR
A	B	C	D	E	F	G	H	J	K
2	5220-749-8339	5.0000-12UN-3A-3 W	4.9459	5.0000 +.0009	4.9871 -.0009	4.9459 -.0003	.0002	6	.0104
2	5220-749-8341	5.0000-16UN-3A-3 W	4.9594	5.0000 +.0009	4.9895 -.0009	4.9594 -.0003	.00015	8	.0078
2	5220-749-8343	5.2500-8N-3 W	5.1688	5.2500 +.0011	5.2329 -.0011	5.1688 -.0003	.00025	5	.0156
2	5220-749-8345	5.2500-12UN-3A-3 W	5.1959	5.2500 +.0009	5.2371 -.0009	5.1959 -.0003	.0002	6	.0104
2	5220-749-8347	5.2500-16UN-3A-3 W	5.2094	5.2500 +.0009	5.2395 -.0009	5.2094 -.0003	.00015	8	.0078
2	5220-749-8349	5.5000-8N-3 W	5.4188	5.5000 +.0011	5.4829 -.0011	5.4188 -.0003	.00025	5	.0156
2	5220-749-8351	5.5000-12UN-3A-3 W	5.4459	5.5000 +.0009	5.4871 -.0009	5.4459 -.0003	.0002	6	.0104
2	5220-749-8353	5.5000-16UN-3A-3 W	5.4594	5.5000 +.0009	5.4895 -.0009	5.4594 -.0003	.00015	8	.0078
2	5220-749-8355	5.7500-8N-3 W	5.6688	5.7500 +.0011	5.7329 -.0011	5.6688 -.0003	.00025	5	.0156
2	5220-749-8357	5.7500-12UN-3A-3 W	5.6959	5.7500 +.0009	5.7371 -.0009	5.6959 -.0003	.0002	6	.0104
2	5220-749-8359	5.7500-16UN-3A-3 W	5.7094	5.7500 +.0009	5.7395 -.0009	5.7094 -.0003	.00015	8	.0078
2	5220-749-8361	6.0000-8N-3 W	5.9188	6.0000 +.0011	5.9829 -.0011	5.9188 -.0003	.00025	5	.0156
2	5220-749-8363	6.0000-12UN-3A-3 W	5.9459	6.0000 +.0009	5.9871 -.0009	5.9459 -.0003	.0002	6	.0104
2	5220-749-8365	6.0000-16UN-3A-3 W	5.9594	6.0000 +.0009	5.9895 -.0009	5.9594 -.0003	.00015	8	.0078

MIL-STD-273B
15 MARCH 1963

Table III. Tabulation of Design and Identification Data - Special (UNS) Threads

FIG. NO.	MARKING ON GAGE HANDLE			TRUNCATED THREAD SETTING PLUG GAGE DIMENSIONS					
	MIL-STD PART NUMBER	THREAD DESIGNATION	GO PITCH DIA	MAJOR DIA FULL PORTION	MAJOR DIA TRUNCATED PORTION	PITCH DIAMETER	TOL ON LEAD	HALF ANGLE TOL	ROOT CLEAR
A	B	C	D	E	F	G	H	J	K
1	5220-751-6782	.5000-12UNS-2A W (.5000-12N-2A W)*	.4443	.4984 + .0006	.4855 - .0006	.44430 - .00015	.0002	6	.0104
1	5220-749-8062	.5000-12UNS-3A W (.5000-12N-3A-3 W)*	.4459	.5000 + .0006	.4871 - .0006	.44590 - .00015	.0002	6	.0104
1	5220-749-8112	1.0000-14UNS-2A W (1.0000-14NF-2A W)*	.9519	.9983 + .0006	.9868 - .0006	.9519 - .0002	.0002	6	.0089
1	5220-749-8113	1.0000-14UNS-3A,NS-3 W (1.0000-14NF-3A-3 W)*	.9536	1.0000 + .0006	.9885 - .0006	.9536 - .0002	.0002	6	.0089
2	5220-749-8212	2.0625-16UNS-2A W (2.0625-16N-2A W)*	2.0203	2.0609 + .0006	2.0504 - .0006	2.02030 - .00025	.00015	8	.0078
2	5220-749-8213	2.0625-16UNS-3A W (2.0625-16N-3A-3 W)*	2.0219	2.0625 + .0006	2.0520 - .0006	2.02190 - .00025	.00015	8	.0078
2	5220-749-8220	2.1875-16UNS-2A W (2.1875-16N-2A W)*	2.1453	2.1859 + .0006	2.1754 - .0006	2.14530 - .00025	.00015	8	.0078
2	5220-749-8221	2.1875-16UNS-3A W (2.1875-16N-3A-3 W)*	2.1469	2.1875 + .0006	2.1770 - .0006	2.14690 - .00025	.00015	8	.0078
2	5220-749-8230	2.3125-16UNS-2A W (2.3125-16N-2A W)*	2.2702	2.3108 + .0006	2.3003 - .0006	2.27020 - .00025	.00015	8	.0078
2	5220-749-8231	2.3125-16UNS-3A W (2.3125-16N-3A-3 W)*	2.2719	2.3125 + .0006	2.3020 - .0006	2.27190 - .00025	.00015	8	.0078
2	5220-749-8236	2.4375-16UNS-2A W (2.4375-16N-2A W)*	2.3952	2.4358 + .0006	2.4253 - .0006	2.39520 - .00025	.00015	8	.0078
2	5220-749-8237	2.4375-16UNS-3A W (2.4375-16N-3A-3 W)*	2.3969	2.4375 + .0006	2.4270 - .0006	2.39690 - .00025	.00015	8	.0078
2	5220-749-8318	4.2500-8UN-2A W (4.2500-8N-2A W)*	4.1660	4.2472 + .0011	4.2301 - .0011	4.1660 - .0003	.00025	5	.0156
2	5220-749-8319	4.2500-8UN-3A W (4.2500-8N-3A-3 W)*	4.1688	4.2500 + .0011	4.2329 - .0011	4.1688 - .0003	.00025	5	.0156
2	5220-749-8324	4.5000-8UN-2A W (4.5000-8N-2A W)*	4.4160	4.4972 + .0011	4.4801 - .0011	4.4160 - .0003	.00025	5	.0156

* Thread designation as previously listed

MIL-STD-273B
15 MARCH 1963

Table III. Tabulation of Design and Identification Data - Special (UNS) Threads (Continued)

FIG. NO.	MARKING ON GAGE HANDLE			TRUNCATED THREAD SETTING PLUG GAGE DIMENSIONS					
	MIL-STD PART NUMBER	THREAD DESIGNATION	GO PITCH DIA	MAJOR DIA FULL PORTION	MAJOR DIA TRUNCATED PORTION	PITCH DIAMETER	TOL ON LEAD	HALF ANGLE TOL	ROOT CLEAR
A	B	C	D	E	F	G	H	J	K
2	5220-749-8325	4.5000-8UN-3A W (4.5000-8N-3A-3 W)*	4.4188	4.5000 + .0011	4.4829 - .0011	4.4188 - .0003	.00025	5	.0156
2	5220-749-8330	4.7500-8UN-2A W (4.7500-8N-2A W)*	4.6659	4.7471 + .0011	4.7300 - .0011	4.6659 - .0003	.00025	5	.0156
2	5220-749-8331	4.7500-8UN-3A W (4.7500-8N-3A-3 W)*	4.6688	4.7500 + .0011	4.7329 - .0011	4.6688 - .0003	.00025	5	.0156
2	5220-749-8336	5.0000-8UN-2A W (5.0000-8N-2A W)*	4.9159	4.9971 + .0011	4.9800 - .0011	4.9159 - .0003	.00025	5	.0156
2	5220-749-8337	5.0000-8UN-3A W (5.0000-8N-3A-3 W)*	4.9188	5.0000 + .0011	4.9829 - .0011	4.9188 - .0003	.00025	5	.0156
2	5220-749-8342	5.2500-8UN-2A W (5.2500-8N-2A W)*	5.1659	5.2471 + .0011	5.2300 - .0011	5.1659 - .0003	.00025	5	.0156
2	5220-749-8343	5.2500-8UN-3A W (5.2500-8N-3A-3 W)*	5.1688	5.2500 + .0011	5.2329 - .0011	5.1688 - .0003	.00025	5	.0156
2	5220-749-8348	5.5000-8UN-2A W (5.5000-8N-2A W)*	5.4158	5.4970 + .0011	5.4799 - .0011	5.4158 - .0003	.00025	5	.0156
2	5220-749-8349	5.5000-8UN-3A W (5.5000-8N-3A-3 W)*	5.4188	5.5000 + .0011	5.4829 - .0011	5.4188 - .0003	.00025	5	.0156
2	5220-749-8354	5.7500-8UN-2A W (5.7500-8N-2A W)*	5.6658	5.7470 + .0011	5.7299 - .0011	5.6658 - .0003	.00025	5	.0156
2	5220-749-8355	5.7500-8UN-3A W (5.7500-8N-3A-3 W)*	5.6688	5.7500 + .0011	5.7329 - .0011	5.6688 - .0003	.00025	5	.0156
2	5220-749-8360	6.0000-8UN-2A W (6.0000-8N-2A W)*	5.9158	5.9970 + .0011	5.9799 - .0011	5.9158 - .0003	.00025	5	.0156
2	5220-749-8361	6.0000-8UN-3A W (6.0000-8N-3A-3 W)*	5.9188	6.0000 + .0011	5.9829 - .0011	5.9188 - .0003	.00025	5	.0156

Note: The length of engagement for 8UN thread series is equal to the nominal diameter.

* Thread designation as previously listed

MIL-STD-273B
15 MARCH 1963

Table IV. Listing of Mil-Std Part Numbers in Numerical Sequence

MIL-STD PART NUMBER	PAGE NO.*	MIL-STD PART NUMBER	PAGE NO.*	MIL-STD PART NUMBER	PAGE NO.*	MIL-STD PART NUMBER	PAGE NO.*	MIL-STD PART NUMBER	PAGE NO.*
A	B	A	B	A	B	A	B	A	B
5220-749-8000	7	5220-749-8028	8	5220-749-8056	11	5220-749-8084	15,53	5220-749-8112	65
5220-749-8001	7,51	5220-749-8029	8,51	5220-749-8057	11,52	5220-749-8085	15	5220-749-8113	65
5220-749-8002	7	5220-749-8030	9	5220-749-8058	11	5220-749-8086	15,54	5220-749-8114	18,55
5220-749-8003	7,51	5220-749-8031	9,52	5220-749-8059	11,53	5220-749-8087	15,54	5220-749-8115	19
5220-749-8004	7	5220-749-8032	9	5220-749-8060	11	5220-749-8088	15	5220-749-8116	19,55
5220-749-8005	7,51	5220-749-8033	9,52	5220-749-8061	11,53	5220-749-8089	15,54	5220-749-8117	19
5220-749-8006	7	5220-749-8034	9	5220-749-8062	53,65	5220-749-8090	15	5220-749-8118	19,55
5220-759-8007	7,51	5220-749-8035	9,52	5220-749-8063	12	5220-749-8091	16,54	5220-749-8119	19,55
5220-749-8008	7	5220-749-8036	9	5220-749-8064	12,53	5220-749-8092	16,54	5220-749-8120	19
5220-749-8009	7,51	5220-749-8037	9,52	5220-749-8065	12	5220-749-8093	16,54	5220-749-8121	19,55
5220-749-8010	7	5220-749-8038	9	5220-749-8066	12,53	5220-749-8094	16	5220-749-8122	20
5220-749-8011	7,51	5220-749-8039	9,52	5220-749-8067	12	5220-749-8095	16,54	5220-749-8123	20,55
5220-749-8012	7	5220-749-8040	9	5220-749-8068	12,53	5220-749-8096	17	5220-749-8124	20
5220-749-8013	7,51	5220-749-8041	9,52	5220-749-8069	12	5220-749-8097	17,54	5220-749-8125	20,55
5220-749-8014	7	5220-749-8042	9	5220-749-8070	12,53	5220-749-8098	17,54	5220-749-8126	20
5220-749-8015	8,51	5220-749-8043	10,52	5220-749-8071	13	5220-749-8099	17	5220-749-8127	20,55
5220-749-8016	8	5220-749-8044	10	5220-749-8072	13,53	5220-749-8100	17,54	5220-749-8128	20,55
5220-749-8017	8,51	5220-749-8045	10,52	5220-749-8073	13	5220-749-8101	17,54	5220-749-8129	20
5220-749-8018	8	5220-749-8046	10	5220-749-8074	13,53	5220-749-8102	17	5220-749-8130	20,55
5220-749-8019	8,51	5220-749-8047	10,52	5220-749-8075	13	5220-749-8103	17,54	5220-749-8131	21
5220-749-8020	8	5220-749-8048	10	5220-749-8076	13,53	5220-749-8104	18,54	5220-749-8132	21,55
5220-749-8021	8,51	5220-749-8049	10,52	5220-749-8077	13,53	5220-749-8105	18,54	5220-749-8133	21,55
5220-749-8022	8	5220-749-8050	10	5220-749-8078	14	5220-749-8106	18	5220-749-8134	21
5220-749-8023	8,51	5220-749-8051	10,52	5220-749-8079	14,53	5220-749-8107	18,54	5220-749-8135	21,55
5220-749-8024	8	5220-749-8052	11	5220-749-8080	14	5220-749-8108	18	5220-749-8136	21
5220-749-8025	8,51	5220-749-8053	11,52	5220-749-8081	14,53	5220-749-8109	18,55	5220-749-8137	22,56
5220-749-8026	8	5220-749-8054	11	5220-749-8082	14,53	5220-749-8110	18	5220-749-8138	22
5220-749-8027	8,51	5220-749-8055	11,52	5220-749-8083	15	5220-749-8111	18,55	5220-749-8139	22,56

* Applicable page number in table I, II, or III for design and identification data

ORDRA Form 20 Table IV. Listing of Mil-Std Part Numbers in Numerical Sequence (Continued) 15 JAN 1963

MIL-STD PART NUMBER	PAGE NO. *	MIL-STD PART NUMBER	PAGE NO. *	MIL-STD PART NUMBER	PAGE NO. *	MIL-STD PART NUMBER	PAGE NO. *	MIL-STD PART NUMBER	PAGE NO. *
A	B	A	B	A	B	A	B	A	B
5220-749-8140	22	5220-749-8168	25	5220-749-8196	30	5220-749-8224	33	5220-749-8252	36
5220-749-8141	22, 56	5220-749-8169	25, 57	5220-749-8197	30, 58	5220-749-8225	33, 59	5220-749-8253	36, 60
5220-749-8142	22, 56	5220-749-8170	26, 57	5220-749-8198	30	5220-749-8226	33	5220-749-8254	36
5220-749-8143	22	5220-749-8171	26	5220-749-8199	30, 58	5220-749-8227	33, 59	5220-749-8255	36, 60
5220-749-8144	22, 56	5220-749-8172	26, 57	5220-749-8200	30	5220-749-8228	33	5220-749-8256	36
5220-749-8145	23	5220-749-8173	26, 57	5220-749-8201	30, 58	5220-749-8229	33, 59	5220-749-8257	36, 60
5220-749-8146	23, 56	5220-749-8174	27	5220-749-8202	31	5220-749-8230	65	5220-749-8258	37
5220-749-8147	23, 56	5220-749-8175	27, 57	5220-749-8203	31, 58	5220-749-8231	59, 65	5220-749-8259	37, 60
5220-749-8148	23	5220-749-8176	27	5220-749-8204	31	5220-749-8232	34	5220-749-8260	37
5220-749-8149	23, 56	5220-749-8177	27, 57	5220-749-8205	31, 58	5220-749-8233	34, 59	5220-749-8261	37, 60
5220-749-8150	23	5220-749-8178	27	5220-749-8206	31	5220-749-8234	34	5220-749-8262	37
5220-749-8151	23, 56	5220-749-8179	27, 57	5220-749-8207	32, 58	5220-749-8235	34, 59	5220-749-8263	37, 60
5220-749-8152	23	5220-749-8180	27, 57	5220-749-8208	32	5220-749-8236	65	5220-749-8264	37
5220-749-8153	23, 56	5220-749-8181	27	5220-749-8209	32, 58	5220-749-8237	59, 65	5220-749-8265	37, 60
5220-749-8154	23	5220-749-8182	27, 57	5220-749-8210	32	5220-749-8238	34	5220-749-8266	37
5220-749-8155	24, 56	5220-749-8183	28, 57	5220-749-8211	32, 58	5220-749-8239	34, 59	5220-749-8267	38, 60
5220-749-8156	24, 56	5220-749-8184	28	5220-749-8212	65	5220-749-8240	34	5220-749-8268	38
5220-749-8157	24	5220-749-8185	28, 57	5220-749-8213	58, 65	5220-749-8241	34, 59	5220-749-8269	38, 60
5220-749-8158	24, 56	5220-749-8186	28	5220-749-8214	32	5220-749-8242	35	5220-749-8270	38
5220-749-8159	24	5220-749-8187	28, 57	5220-749-8215	32, 58	5220-749-8243	35, 59	5220-749-8271	38, 60
5220-749-8160	24, 56	5220-749-8188	29	5220-749-8216	32	5220-749-8244	35	5220-749-8272	38
5220-749-8161	25, 56	5220-749-8189	29, 58	5220-749-8217	32, 58	5220-749-8245	35, 59	5220-749-8273	38, 60
5220-749-8162	25	5220-749-8190	29	5220-749-8218	32	5220-749-8246	35	5220-749-8274	38
5220-749-8163	25, 57	5220-749-8191	29, 58	5220-749-8219	32, 59	5220-749-8247	35, 59	5220-749-8275	38, 60
5220-749-8164	25	5220-749-8192	29	5220-749-8220	65	5220-749-8248	35	5220-749-8276	39
5220-749-8165	25, 57	5220-749-8193	29, 58	5220-749-8221	59, 65	5220-749-8249	35, 60	5220-749-8277	39, 60
5220-749-8166	25	5220-749-8194	30	5220-749-8222	33	5220-749-8250	36	5220-749-8278	39
5220-749-8167	25, 57	5220-749-8195	30, 58	5220-749-8223	33, 59	5220-749-8251	36, 60	5220-749-8279	39, 61

* Applicable page number in table I, II, or III for design and identification data

MIL-STD-273B

15 JAN 1963

ORDBA Fo

Table IV. Listing of Mil-Std Part Numbers in Numerical Sequence (Continued)

MIL-STD PART NUMBER	PAGE NO.*	MIL-STD PART NUMBER	PAGE NO.*	MIL-STD PART NUMBER	PAGE NO.*	MIL-STD PART NUMBER	PAGE NO.*	MIL-STD PART NUMBER	PAGE NO.*
A	B	A	B	A	B	A	B	A	B
5220-749-8280	39	5220-749-8308	42	5220-749-8336	66	5220-749-8364	49	7518933	10
5220-749-8281	39,61	5220-749-8309	42,62	5220-749-8337	62,66	5220-749-8365	49,63	7518934	10
5220-749-8282	39	5220-749-8310	42	5220-749-8338	46	5220-751-6780	9	7518935	10
5220-749-8283	39,61	5220-749-8311	42,62	5220-749-8339	46,63	5220-751-6781	9,52	7518936	10
5220-749-8284	39	5220-749-8312	42	5220-749-8340	46	5220-751-6782	65	7518937	11
5220-749-8285	40,61	5220-749-8313	42,62	5220-749-8341	46,63	5220-751-6783	13	7518938	11
5220-749-8286	40	5220-749-8314	42	5220-749-8342	66	5220-751-6784	14	7518939	11
5220-749-8287	40,61	5220-749-8315	42,62	5220-749-8343	63,66	5220-751-6785	15	7518940	11
5220-749-8288	40	5220-749-8316	43	5220-749-8344	47	5220-751-6786	16	7518941	11
5220-749-8289	40,61	5220-749-8317	43,62	5220-749-8345	47,63	5220-751-6787	16	7518942	12
5220-749-8290	40	5220-749-8318	65	5220-749-8346	47	5220-751-6788	17	7518943	12
5220-749-8291	40,61	5220-749-8319	62,65	5220-749-8347	47,63	5220-751-6789	17	7518944	12
5220-749-8292	40	5220-749-8320	43	5220-749-8348	66	5220-751-6790	17	7518945	12
5220-749-8293	40,61	5220-749-8321	43,62	5220-749-8349	63,66	5220-751-6791	18	7518946	12
5220-749-8294	41	5220-749-8322	43	5220-749-8350	47	5220-751-6792	18	7518947	12
5220-749-8295	41,61	5220-749-8323	44,62	5220-749-8351	48,63	5220-751-6793	19	7518948	12
5220-749-8296	41	5220-749-8324	65	5220-749-8352	48	5220-751-6794	20	7518949	13
5220-749-8297	41,61	5220-749-8325	62,66	5220-749-8353	48,63	5220-751-6795	21	7518950	13
5220-749-8298	41	5220-749-8326	44	5220-749-8354	66	5220-751-6796	22	7518951	13
5220-749-8299	41,61	5220-749-8327	44,62	5220-749-8355	63,66	5220-751-6797	23	7518952	13
5220-749-8300	41	5220-749-8328	44	5220-749-8356	48	5220-751-6798	24	7518953	13
5220-749-8301	41,61	5220-749-8329	44,62	5220-749-8357	48,63	5220-751-6799	25	7518954	13
5220-749-8302	41	5220-749-8330	66	5220-749-8358	48	5220-751-6800	25	7518955	13
5220-749-8303	41,61	5220-749-8331	62,66	5220-749-8359	48,63	5220-751-6801	26	7518956	14
5220-749-8304	41	5220-749-8332	45	5220-749-8360	66	5220-751-6802	27	7518957	14
5220-749-8305	41,61	5220-749-8333	45,62	5220-749-8361	63,66	5220-751-6803	28	7518958	14
5220-749-8306	42	5220-749-8334	45	5220-749-8362	49	7518931	10	7518959	14
5220-749-8307	42,61	5220-749-8335	45,62	5220-749-8363	49,63	7518932	10	7518960	14

* Applicable page number in table I, II, or III for design and identification data

ORDBA Form

Table IV. Listing of Mil-Std Part Numbers in Numerical Sequence (Continued)

MIL-STD PART NUMBER	PAGE NO.*	MIL-STD PART NUMBER	PAGE NO.*	MIL-STD PART NUMBER	PAGE NO.*	MIL-STD PART NUMBER	PAGE NO.*	MIL-STD PART NUMBER	PAGE NO.*
A	B	A	B	A	B	A	B	A	B
7518961	14	7518989	19	7519017	24	7519045	28	7519073	31
7518962	14	7518990	19	7519018	24	7519046	28	7519074	31
7518963	14	7518991	19	7519019	24	7519047	28	7519075	31
7518964	14	7518992	19	7519020	24	7519048	28	7519076	31
7518965	15	7518993	19	7519021	24	7519049	28	7519077	31
7518966	15	7518994	20	7519022	24	7519050	28	7519078	31
7518967	15	7518995	20	7519023	24	7519051	28	7519079	32
7518968	15	7518996	20	7519024	24	7519052	28	7519080	32
7518969	15	7518997	20	7519025	25	7519053	29	7519081	32
7518970	15	7518998	20	7519026	25	7519054	29	7519082	32
7518971	16	7518999	21	7519027	25	7519055	29	7519083	33
7518972	16	7519000	21	7519028	25	7519056	29	7519084	33
7518973	16	7519001	21	7519029	26	7519057	29	7519085	33
7518974	16	7519002	21	7519030	26	7519058	29	7519086	33
7518975	16	7519003	21	7519031	26	7519059	29	7519087	33
7518976	16	7519004	21	7519032	26	7519060	29	7519088	33
7518977	16	7519005	21	7519033	26	7519061	29	7519089	33
7518978	16	7519006	21	7519034	26	7519062	30	7519090	34
7518979	17	7519007	22	7519035	26	7519063	30	7519091	34
7518980	17	7519008	22	7519036	26	7519064	30	7519092	34
7518981	17	7519009	22	7519037	26	7519065	30	7519093	34
7518982	17	7519010	22	7519038	26	7519066	30	7519094	34
7518983	18	7519011	22	7519039	27	7519067	30	7519095	34
7518984	18	7519012	22	7519040	27	7519068	30	7519096	34
7518985	18	7519013	23	7519041	27	7519069	31	7519097	35
7518986	18	7519014	23	7519042	27	7519070	31	7519098	35
7518987	19	7519015	23	7519043	27	7519071	31	7519099	35
7518988	19	7519016	23	7519044	28	7519072	31	7519100	35

* Applicable page number in table I, II, or III for design and identification data

ORDBA Form

Table IV. Listing of Mil-Std Part Numbers in Numerical Sequence (Continued)

MIL-STD-273B
15 MAR 1963

MIL-STD PART NUMBER	PAGE NO.*	MIL-STD PART NUMBER	PAGE NO.*	MIL-STD PART NUMBER	PAGE NO.*	MIL-STD PART NUMBER	PAGE NO.*	MIL-STD PART NUMBER	PAGE NO.*
A	B	A	B	A	B	A	B	A	B
7519101	35	7519130	40	7519158	44	7519186	47		
7519102	35	7519131	40	7519159	44	7519187	47		
7519103	35	7519132	40	7519160	44	7519188	47		
7519104	36	7519133	40	7519161	44	7519189	47		
7519105	36	7519134	40	7519162	44	7519190	47		
7519106	36	7519135	41	7519163	44	7519191	47		
7519107	36	7519136	41	7519164	45	7519192	47		
7519108	36	7519137	41	7519165	45	7519193	47		
7519109	36	7519138	42	7519166	45	7519194	47		
7519110	36	7519139	42	7519167	45	7519195	48		
7519111	37	7519140	42	7519168	45	7519196	48		
7519112	37	7519141	42	7519169	45	7519197	48		
7519113	37	7519142	42	7519170	45	7519198	48		
7519114	37	7519143	43	7519171	45	7519199	48		
7519115	37	7519144	43	7519172	45	7519200	48		
7519116	37	7519145	43	7519173	45	7519201	48		
7519117	38	7519146	43	7519174	46	7519202	48		
7519118	38	7519147	43	7519175	46	7519203	49		
7519120	38	7519148	43	7519176	46	7519204	49		
7519121	38	7519149	43	7519177	46	7519205	49		
7519122	38	7519150	43	7519178	46	7519206	49		
7519123	39	7519151	43	7519179	46				
7519124	39	7519152	43	7519180	46				
7519125	39	7519153	44	7519181	46				
7519126	39	7519154	44	7519182	46				
7519127	39	7519155	44	7519183	46				
7519128	39	7519156	44	7519184	46				
7519129	40	7519157	44	7519185	47				

* Applicable page number in table I, II, or III for design and identification data

Mil-Std-273B
15 March 1963

Notice: When Government drawings, specifications, or other data are used for any purpose other than in connection with a definitely related Government procurement operation, the United States Government thereby incurs no responsibility nor any obligation whatsoever; and the fact that the Government may have formulated, furnished, or in any way supplied the said drawings, specifications, or other data, is not to be regarded by implication or otherwise as in any manner licensing the holder or any other person or corporation, or conveying any rights or permission to manufacture, use, or sell any patented invention that may in any way be related thereto.

Copies of specifications, standards, drawings, and publications required by contractors in connection with specific procurement functions should be obtained from the procuring agency or as directed by the contracting officer.

Copies of this standard for military use may be obtained as indicated in the foreword to the DOD Index of Military Specifications and Standards.

Copies of this standard may be obtained for other than official use by individuals, firms, and contractors from the Superintendent of Documents, U. S. Government Printing Office, Washington 25, D. C.

Both the title and the identifying symbol number should be stipulated when requesting copies of military standards.

Custodians:

Army - MU
Navy - WEPS
Air Force - MAA

Preparing Activity

Army - MU

☆U.S. GOVERNMENT PRINTING OFFICE:1971-714-160/13040