

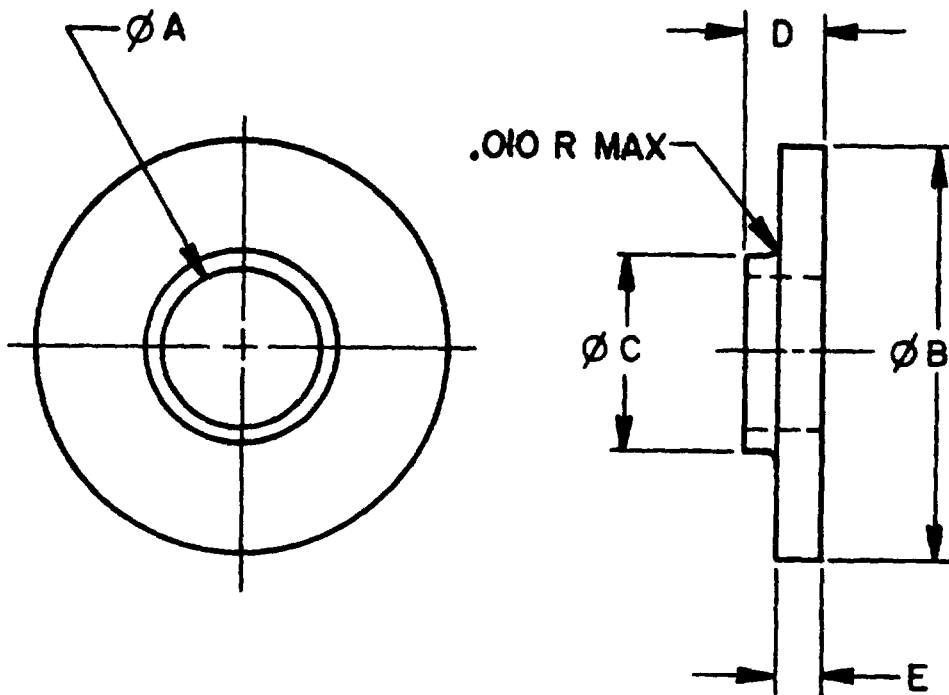
MIL-W-45595/1
16 AUGUST 1985

MILITARY SPECIFICATION SHEET

WASHER, SHOULDERED, POLYAMIDE (NYLON)

This specification is approved for use by all Departments and Agencies of the Department of Defense.

The complete requirements for acquiring the washers described herein shall consist of this specification and the latest issue of MIL-W-45595.



NOTES:

1. All dimensions are in inches.

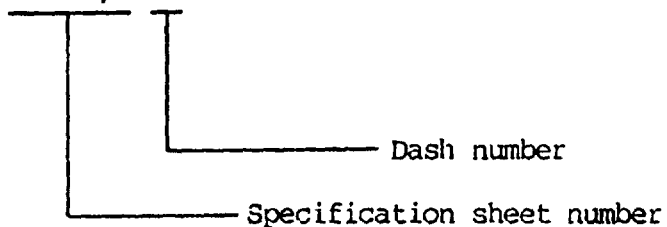
FIGURE 1. WASHER, SHOULDERED, POLYAMIDE (NYLON).

MIL-W-45595/1

REQUIREMENTS:

1. Material: Polyamide (Nylon).
2. Part number: The part number consists of the letter "M", the basic number of this specification sheet, followed by a dash number taken from Table I.

EXAMPLE: M45595/1-01



M45595/1-01 Indicates - Washer, Shouldered, Polyamide (Nylon), inside diameter .093, outside diameter .218.

MIL-W-45595/1

TABLE I. DASH NUMBERS AND DIMENSIONS.

DASH NUMBER	ϕ A INSIDE DIA + .010 TOL - .000	ϕ B OUTSIDE DIA + .015 TOL - .005	ϕ C OUTSIDE DIA SHOULDER + .000 TOL - .010	D OVERALL HGT + TOL - .008	E + TOL - .005
01	.093	.218	.122	.087	.025
02	.116	.250	.150	.050	.020
03	.140	.250	.187	.093	.031
04	.140	.328	.204	.093	.031
05	.140	.375	.240	.093	.031
06	.167	.375	.246	.093	.031
07	.193	.375	.257	.062	.031
08	.193	.375	.257	.078	.043
09	.194	.375	.250	.110	.047
10	.196	.375	.308	.093	.031
11	.250	.500	.312	.068	.031
12	.250	.500	.308	.093	.031
13	.250	.625	.432	.089	.027
14	.265	.500	.365	.093	.031
15	.290	.562	.387	.078	.031
16	.317	.625	.432	.112	.050
17	.317	.750	.371	.081	.050
18	.375	.750	.500	.093	.031
19	.385	.625	.500	.093	.031
20	.385	.625	.500	.075	.031

MIL-W-45595/1

Custodians:

Army - AR
Air Force - 99

Preparing activity:

Army - AR

Review activities:

Army - AV, ER
Air Force - 11, 82
DLA - IS

(Project 5310-1342)

User activities:

Navy - EC
NSA - NS

Agent:

DLA - IS