

METRIC

MIL-V-24694/1(SH)

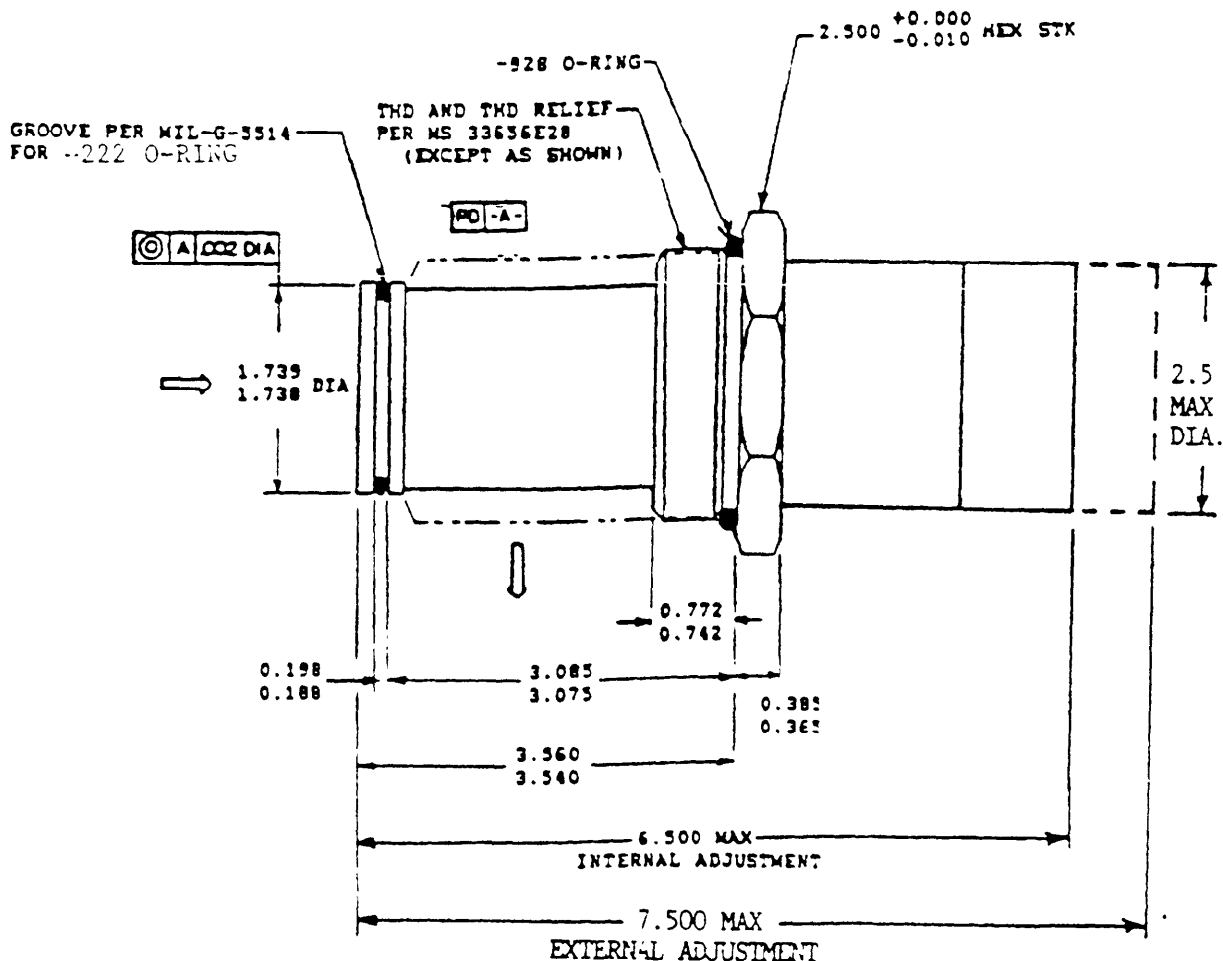
28 October 1987

## MILITARY SPECIFICATION SHEET

VALVE, HYDRAULIC RELIEF, 1.5 - 35 BAR,  
150 LPM CARTRIDGE TYPE

This specification is approved for use within the Naval Sea Systems Command, Department of the Navy, and is available for use by all Departments and Agencies of the Department of Defense.

The requirements for acquiring the hydraulic relief valve described herein shall consist of this document and the latest issue of MIL-V-24694.



All dimensions are shown in inches.

AMSC N/A

DISTRIBUTION STATEMENT A Approved for public release; distribution unlimited

FSC 4810

MIL-V-24694/1(SH)

TABLE I. Pressure class.

Class	Nominal set differential pressure range	
	Bar	lb/in <sup>2</sup>
-A	1.4 - 2.0	20.3 - 29.0
-B	2.0 - 3.5	29.0 - 50.75
-C	3.5 - 5.0	50.75 - 72.5
-D	5.0 - 7.0	72.5 - 101.5
-E	7.0 - 10.0	101.5 - 145
-F	10.0 - 14.0	145 - 203
-G	14.0 - 20.0	203 - 290
-H	20.0 - 30.0	290 - 435
-I	30.0 - 35.0	436 - 507.5

TABLE II. Adjustment type.

Dash letters	Description
IN	Internal adjustment
EX	External adjustment

## Requirements:

1. Allowable reseal leakage 10 mL<sup>3</sup> per minute maximum with maximum fluid viscosity of 75 centistokes.
2. Surface roughness shall not exceed 125 microinches in accordance with ANSI B46.1. Remove all burrs and break sharp edges 0.005 minimum.
3. Material shall be in accordance with MIL-V-24694.
4. Rated flow shall be 150 liters per minute.

Part number: The part number shall consist of the basic number of this specification sheet, plus the applicable class letters selected from table I, and the adjustment type dash letters selected from table II. For valves whose pressure range covers more than one class, the letters designating the minimum and maximum settings are used to form the part number.

Example: M24694/1-C-IN Valve with a pressure range of 3.5 to 5 bar,  
internal adjustment  
M24694/1-CE-IN Valve with a pressure range of 3.5 to 10 bar,  
Internal adjustment

Preparing activity:

Navy - SH

(Project 4810-N057-1)