

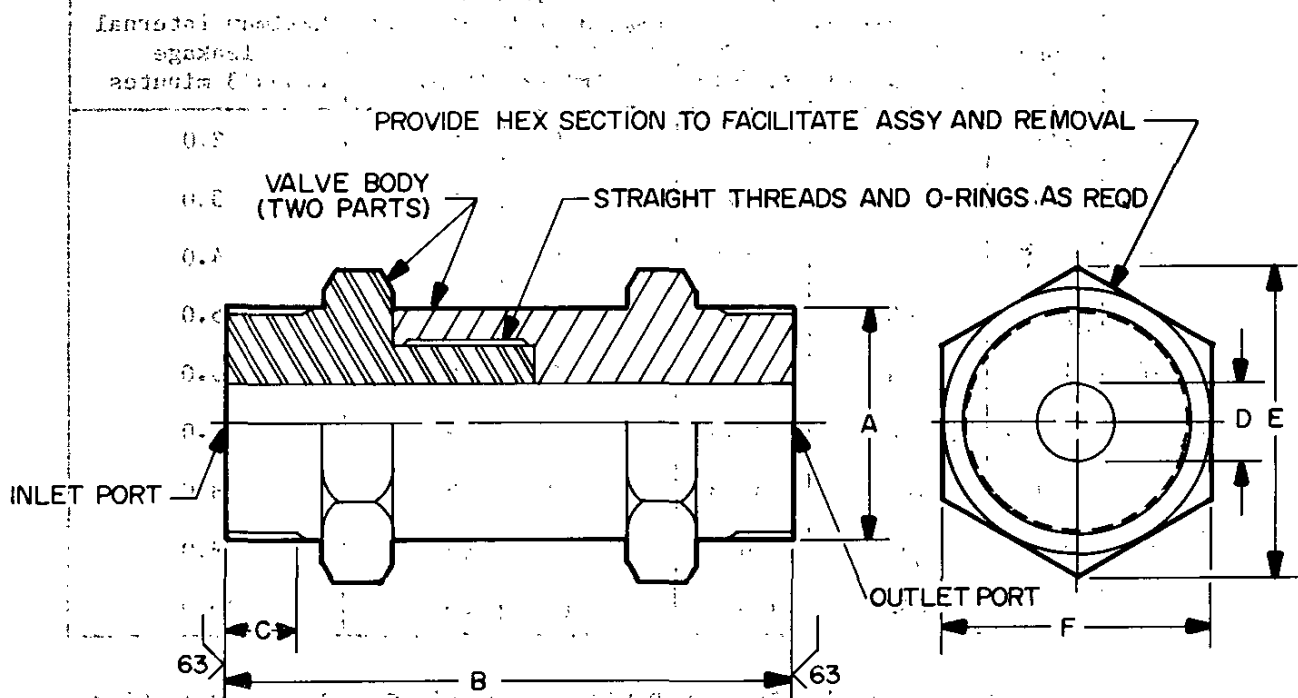
MIL-V-24630/2A(SH)
18 June 1987

MILITARY SPECIFICATION SHEET

VALVES, CHECK, IN-LINE, FOR HYDRAULIC FLUID
AND LUBRICATING OIL FLUID

This specification is approved for use within the Naval Sea Systems Command, Department of the Navy, and is available for use by all Departments and Agencies of the Department of Defense.

The requirements for acquiring the valves described herein shall consist of this specification and the latest issue of MIL-V-24630(SH).



SH 12107

FIGURE 1. In-line check valve.

AMSC N/A

DISTRIBUTION STATEMENT A

Approved for public release; distribution unlimited

FSC 4820

MIL-V-24630/2A(SH)

REQUIREMENTS:

Rated flow and pressure drop shall be as shown in table I.

Dimensions are in inches.

Tolerances, unless otherwise specified herein, shall be plus or minus 1/64 for fractions and plus or minus 0.010 for decimals.

Part number: The part numbers consist of the basic number of this specification sheet and a dash number taken from table I.

Example: MIL-V-24630/2-16.

TABLE I. Rated flow, pressure drop and leakage requirements.

Dash no.	Nps ^{1/}	Rated flow (minimum)		Pressure drop (max at rate of flow)		Maximum internal leakage drops/3 minutes
		liters/min	gal/min	lb/in ²	(kPa)	
04	1/4	10	2.6	10	69	2.0
06	3/8	16	4.2	10	69	3.0
08	1/2	25	6.6	10	69	4.0
12	3/4	40	10.6	10	69	5.0
16	1	64	16.9	10	69	6.0
20	1-1/4	100	26.4	10	69	7.0
24	1-1/2	160	42.3	10	69	8.0
32	2	250	66.0	10	69	9.0
40	2-1/2	400	105.7	10	69	10.0

^{1/} Check valve port dimensions are based on schedule 80 pipe. Use in other schedule piping may increase noise characteristic slightly.

MIL-V-24630/2A(SH)

TABLE II. Body dimensions.

Dash no.	Nps ^{1/}	A (dia)	B ± 1/16	C	D	E	F
04	1/4	1-3/16-12UC-3A	3-7/8	1/2	0.302	1.588	1-3/8
06	3/8	1-3/8-12UNF-3A	4-1/16	1/2	.423	1.876	1-5/8
08	1/2	1-3/4-12UN-3A	4-3/8	1/2	.546	2.309	2
12	3/4	2-12UN-3A	5-3/16	1/2	.742	2.742	2-3/8
16	1	2-5/16-12NS-3A ^{2/}	5-7/8	5/8	.957	3.175	2-3/4
20	1-1/4	2-3/4-12UN-3A	6-7/16	5/8	1.280	3.752	3-1/4
24	1-1/2	3-1/16-12NS-3A ^{3/}	7-5/8	3/4	1.500	4.330	3-3/4
32	2	3-3/4-12UN-3A	8-1/8	3/4	1.940	5.051	4-3/8
40	2-1/2	4-1/2-12UN-3A	9-1/8	1	2.320	5.918	5-1/8

^{1/} Check valve port dimensions are based on schedule 80 pipe. Use in other schedule piping may increase noise characteristic slightly.

^{2/} PD 2.2584 - 2.2539.

^{3/} PD 3.0084 - 3.0037.

Preparing activity:
Navy - SH
(Project 4820-N016)