

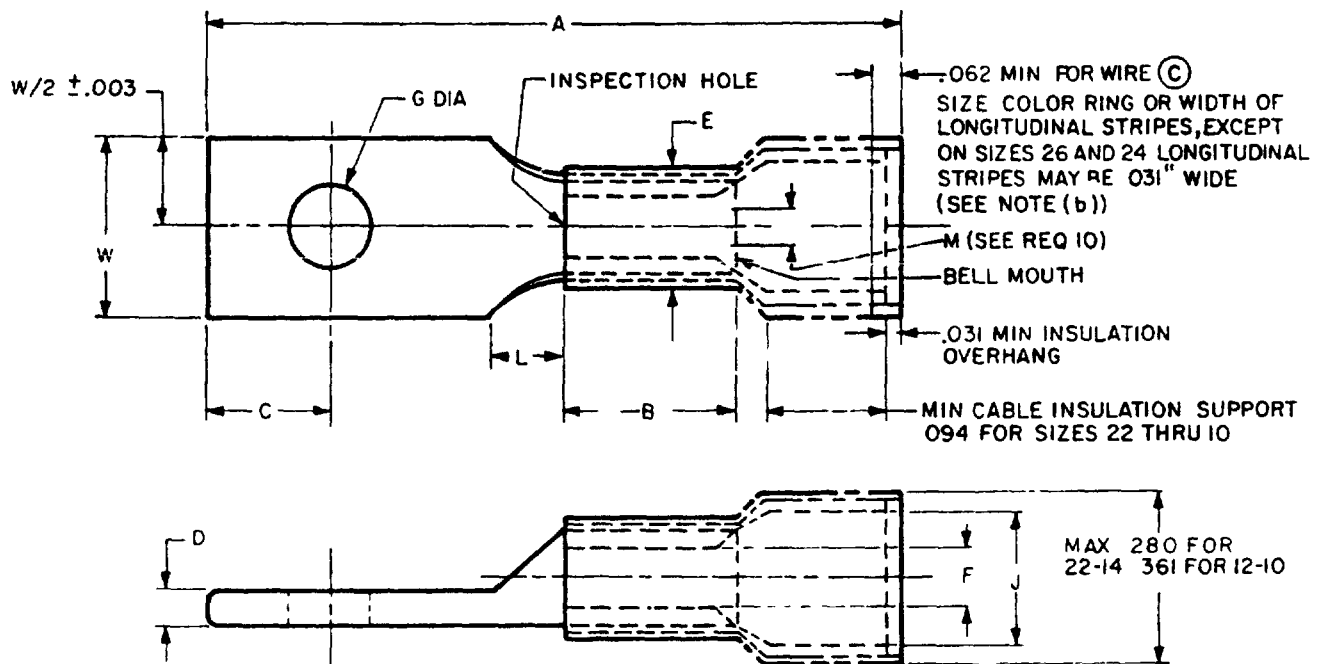
MIL-T-7928/2C  
 9 June 1981  
 SUPERSEDING  
 MIL-T-7928/2B  
 30 November 1972

MILITARY SPECIFICATION SHEET

TERMINALS, LUG AND SPLICES, CONDUCTOR, CRIMP STYLE, COPPER,  
 INSULATED, RECTANGULAR TONGUE, FOR THIN WALL WIRE, TYPE II  
 CLASS 1 FOR 105°C TOTAL CONDUCTOR TEMPERATURE

This specification is approved for use by all Departments  
 and Agencies of the Department of Defense.

The complete requirements for acquiring the terminal described herein  
 shall consist of this document and the issue in effect of Specification  
 MIL-T-7928.



NOTES.

- (a) DIMENSIONS IN INCHES.
- (b) THE COLOR RING MUST COVER A MINIMUM OF 315° OF THE CIRCUMFERENCE. IN LIEU OF THE WIRE SIZE COLOR RING, 3 OR MORE LONGITUDINAL STRIPES EQUALLY SPACED ON THE INSULATION PORTION OF THE TERMINAL MAY BE USED. THE STRIPES MUST EXTEND TO WITHIN 1/16" OF THE ENDS OF THE INSULATION AND MUST NOT OBLITERATE THE BASIC SLEEVE COLOR.

(C) DENOTES CHANGES

FSC 5940



MIL-T-792G/2C

(C)

TABLE I

DASH NO	WIRE SIZE	STUD SIZE	A MAX	B MAX	C + 0.10	D	F DIA	F DIA	G DIA		I MIN DIA	I MAX	M	W ± 0.05	INSUL SUFFLE COLOR	WIRE SIZE COLOR	TONGUE SHAPE REF (ONLY)	NAVY TERMINAL AND WIRE SIZE (REF ONLY)						
									MAX	MIN														
1	22	4 ( 12 )	842	156	143	0.31 0.29	215 190	0.70 0.64	177	114	0.90	125	0.39 0.34	237	RED	GREEN	LR6P-1	1-2						
2		4 ( 112 )	1 061		143				156	177		114					125		156	177	156	237	LR6P-1	
3		5 ( 125 )	905		143				125	177		114					125		156	177	156	237	LR6P-1	
4		6 ( 138 )	1 061		195				156	177		114					125		156	177	156	237	LR6P-1	
5		6 ( 138 )	1 155		227				250	302		390					281		237	302	390	281	237	LR6P-1
6		8 ( 164 )	1 405		310				281	390		281					237		302	390	281	237	LR6P-1	
7		8 ( 164 )	1 405		310				281	390		281					237		302	390	281	237	LR6P-1	
8		8 ( 164 )	1 405		310				281	390		281					237		302	390	281	237	LR6P-1	
9	20	4 ( 112 )	842	156	143	0.31 0.29	215 190	0.70 0.64	177	114	0.90	125	0.39 0.34	237	RED	RED	LR6P-1	1-2						
10		4 ( 112 )	1 061		143				156	177		114					125		156	177	156	237	LR6P-1	
11		5 ( 125 )	905		143				125	177		114					125		156	177	156	237	LR6P-1	
12		6 ( 138 )	1 061		195				156	177		114					125		156	177	156	237	LR6P-1	
13		6 ( 138 )	1 155		227				250	302		390					281		237	302	390	281	237	LR6P-1
14		8 ( 164 )	1 405		310				281	390		281					237		302	390	281	237	LR6P-1	
15		8 ( 164 )	1 405		310				281	390		281					237		302	390	281	237	LR6P-1	
16		8 ( 164 )	1 405		310				281	390		281					237		302	390	281	237	LR6P-1	
17	18	4 ( 112 )	842	156	143	0.31 0.28	215 170	0.70 0.57	177	114	1.00	125	0.36 0.31	237	RED	WHITE	LR6P-1	1-2						
18		4 ( 112 )	1 061		143				156	177		114					125		156	177	156	237	LR6P-1	
19		5 ( 125 )	905		143				125	177		114					125		156	177	156	237	LR6P-1	
20		6 ( 138 )	1 061		195				156	177		114					125		156	177	156	237	LR6P-1	
21		6 ( 138 )	1 155		227				250	302		390					281		237	302	390	281	237	LR6P-1
22		8 ( 164 )	1 405		310				281	390		281					237		302	390	281	237	LR6P-1	
23		8 ( 164 )	1 405		310				281	390		281					237		302	390	281	237	LR6P-1	
24		8 ( 164 )	1 405		310				281	390		281					237		302	390	281	237	LR6P-1	
25	16	4 ( 112 )	842	156	143	0.31 0.29	240 210	0.90 0.59	177	114	1.10	125	0.63 0.59	237	BLUE	BLUE	LR6P-2	2 1/2-4						
26		4 ( 112 )	1 061		143				156	177		114					125		156	177	156	237	LR6P-2	
27		5 ( 125 )	905		143				125	177		114					125		156	177	156	237	LR6P-2	
28		6 ( 138 )	1 061		195				156	177		114					125		156	177	156	237	LR6P-2	
29		6 ( 138 )	1 155		227				250	302		390					281		237	302	390	281	237	LR6P-2
30		8 ( 164 )	1 405		310				281	390		281					237		302	390	281	237	LR6P-2	
31		8 ( 164 )	1 405		310				281	390		281					237		302	390	281	237	LR6P-2	
32		8 ( 164 )	1 405		310				281	390		281					237		302	390	281	237	LR6P-2	
33	14	4 ( 112 )	842	156	143	0.31 0.29	240 210	0.90 0.74	177	114	1.30	125	0.78 0.74	237	RED	GREEN	LR6P-2	2 1/2-4						
34		4 ( 112 )	1 061		143				156	177		114					125		156	177	156	237	LR6P-2	
35		5 ( 125 )	905		143				125	177		114					125		156	177	156	237	LR6P-2	
36		6 ( 138 )	1 061		195				156	177		114					125		156	177	156	237	LR6P-2	
37		6 ( 138 )	1 155		227				250	302		390					281		237	302	390	281	237	LR6P-2
38		8 ( 164 )	1 405		310				281	390		281					237		302	390	281	237	LR6P-2	
39		8 ( 164 )	1 405		310				281	390		281					237		302	390	281	237	LR6P-2	
40		8 ( 164 )	1 405		310				281	390		281					237		302	390	281	237	LR6P-2	
41	17	4 ( 112 )	842	234	143	0.46 0.41	300 275	1.15 0.91	177	114	1.50	125	0.95 0.91	237	YELLOW	YELLOW	LR6P-3	6-9						
42		4 ( 112 )	1 061		143				156	177		114					125		156	177	156	237	LR6P-3	
43		5 ( 125 )	1 174		143				125	177		114					125		156	177	156	237	LR6P-3	
44		6 ( 138 )	1 281		195				156	177		114					125		156	177	156	237	LR6P-3	
45		6 ( 138 )	1 375		227				250	302		390					281		237	302	390	281	237	LR6P-3
46		8 ( 164 )	1 609		310				281	390		281					237		302	390	281	237	LR6P-3	
47		8 ( 164 )	1 609		310				281	390		281					237		302	390	281	237	LR6P-3	
48		8 ( 164 )	1 609		310				281	390		281					237		302	390	281	237	LR6P-3	
49	10	4 ( 112 )	842	234	143	0.46 0.41	300 275	1.15 0.91	177	114	1.80	125	1.18 1.15	237	YELLOW	BROWN	LR6P-3	6-9						
50		4 ( 112 )	1 061		143				156	177		114					125		156	177	156	237	LR6P-3	
51		5 ( 125 )	1 174		143				125	177		114					125		156	177	156	237	LR6P-3	
52		6 ( 138 )	1 281		195				156	177		114					125		156	177	156	237	LR6P-3	
53		6 ( 138 )	1 375		227				250	302		390					281		237	302	390	281	237	LR6P-3
54		8 ( 164 )	1 609		310				281	390		281					237		302	390	281	237	LR6P-3	
55		8 ( 164 )	1 609		310				281	390		281					237		302	390	281	237	LR6P-3	
56		8 ( 164 )	1 609		310				281	390		281					237		302	390	281	237	LR6P-3	

## MIL-T-7928/2C

## Metric Table

INCH	mm	INCH	mm	INCH	mm	INCH	mm
.029	0.74	.090	2.29	.150	3.81	.281	7.14
.031	0.79	.091	2.31	.152	3.86	.300	7.62
.034	0.86	.094	2.39	.156	3.96	.302	7.67
.035	0.89	.095	2.41	.164	4.17	.310	7.87
.037	0.94	.100	2.54	.168	4.27	.361	9.17
.039	0.99	.110	2.79	.178	4.52	.390	9.91
.042	1.07	.112	2.84	.180	4.57	.842	21.39
.046	1.17	.114	2.90	.190	4.83	.905	22.99
.048	1.22	.115	2.92	.195	4.95	1.061	26.95
.052	1.32	.118	3.00	.210	5.33	1.062	26.97
.056	1.42	.122	3.10	.215	5.46	1.124	28.55
.059	1.50	.125	3.18	.227	5.77	1.155	29.34
.062	1.57	.129	3.28	.234	5.94	1.281	32.54
.063	1.60	.130	3.30	.237	6.02	1.359	34.52
.070	1.78	.135	3.43	.240	6.10	1.405	35.69
.074	1.88	.137	3.48	.250	6.35	1.609	40.87
.078	1.98	.138	3.51	.275	6.99		
.080	2.03	.142	3.61	.277	7.04		
.086	2.18	.143	3.63	.280	7.11		

## Custodians:

Navy - AS  
 Army - ER  
 Air Force - 99

## Preparing activity:

Navy - AS  
 (Project No. 5940-0930)

## Review activities:

Navy - SH, EC  
 Army - MI  
 Air Force - 11  
 DOD - NS

## User activities:

Army - AV  
 Navy - MC, OS

STANDARDIZATION DOCUMENT IMPROVEMENT PROPOSAL	
<p><b>INSTRUCTIONS</b> This form is provided to solicit beneficial comments which may improve this document and enhance its use. DoD contractors, government activities, manufacturers, vendors, or other prospective users of the document are invited to submit comments to the government. Fold on lines on reverse side, staple in corner, and send to preparing activity. Attach any pertinent data which may be of use in improving this document. If there are additional papers, attach to form and place both in an envelope addressed to preparing activity. A response will be provided to the submitter, when name and address is provided, within 30 days indicating that the 1426 was received and when any appropriate action on it will be completed.</p> <p><b>NOTE</b> This form shall not be used to submit requests for waivers, deviations or clarification of specification requirements on current contracts. Comments submitted on this form do not constitute or imply authorization to waive any portion of the referenced document(s) or to amend contractual requirements.</p>	
<p>DOCUMENT IDENTIFIER (Number) AND TITLE MIL-I-7928/2C Terminals, Lug and Splices, Conductor, Crimp Style, Copper, Insulated, Rectangular Tongue, for Thin Wall</p>	
<p>NAME OF ORGANIZATION AND ADDRESS OF SUBMITTER Wire, type II Class I for 105°C total Conductor Temperature.</p>	
<p><input type="checkbox"/> VENDOR      <input type="checkbox"/> USER      <input type="checkbox"/> MANUFACTURER</p>	
<p>1 <input type="checkbox"/> HAS ANY PART OF THE DOCUMENT CREATED PROBLEMS OR REQUIRED INTERPRETATION IN PROCUREMENT USE?      <input type="checkbox"/> IS ANY PART OF IT TOO RIGID, RESTRICTIVE, LOOSE OR AMBIGUOUS? PLEASE EXPLAIN BELOW</p> <p>A. GIVE PARAGRAPH NUMBER AND WORDING</p> <p>B. RECOMMENDED WORDING CHANGE</p> <p>C. REASON FOR RECOMMENDED CHANGE(S)</p>	
<p>2 REMARKS</p>	
<p>SUBMITTED BY (Printed or typed name and address - Optional)</p>	<p>TELEPHONE NO</p>
	<p>DATE</p>

FOLD

DEPARTMENT OF THE NAVY



NO POSTAGE  
NECESSARY  
IF MAILED  
IN THE  
UNITED STATES

**OFFICIAL BUSINESS**  
PENALTY FOR PRIVATE USE \$300

**BUSINESS REPLY MAIL**  
FIRST CLASS      PERMIT NO 12603      WASHINGTON D C

POSTAGE WILL BE PAID BY THE DEPARTMENT OF THE NAVY



Engineering Specifications and Standards Dept  
(Code 93)  
Naval Air Engineering Center  
Lakehurst, NJ 08733

FOLD