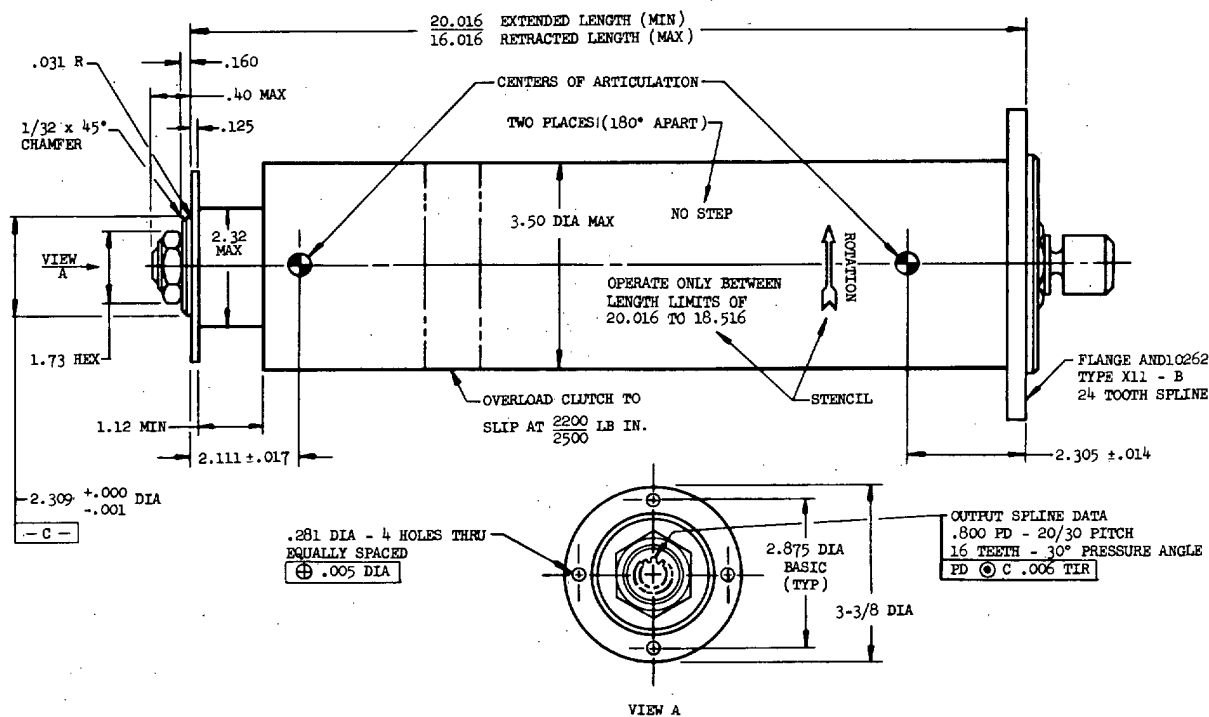


MIL-T-5091/2(WP)
9 JULY 1965

MILITARY SPECIFICATION SHEET

TRANSMISSION, POWER, CONSTANT RATIO
SHAFT, FLEXIBLE DRIVE, 47 HP

The complete requirements for procuring the transmission described herein shall consist of this document and the issue in effect of MIL-T-5091(WP).



REQUIREMENTS:

RATED LOAD (MAX CONTINUOUS) AT 2800 RPM

OVERLOAD RATINGS: 5 MINS, AT 2800 RPM

5 SECS, AT 2800 RPM

MISALIGNMENT CAPABILITY AT EACH OF TWO ARTICULATING JOINTS

SHEAR SECTION - INPUT

OVERSPEED

IMBALANCE (EACH END, MAX)

THRUST TO EXTEND OR SHORTEN SHAFT LENGTH AT 955 LB IN TORQUE (MAX)

EFFICIENCY AT RATED LOAD OVER RATED SPEED (MIN)

WEIGHT (MAX)

FLIGHT OPERATING LIFE TO FIRST OVERHAUL (MIN)

SPEED RANGE (CONTINUOUS)

47 HP

70 HP

85 HP.

5° CONTINUOUS, 10° FOR 5 SEC

4030 \pm 240 LB IN.

11,000 RPM

0.15 OZ IN.

50 LB

99 %

12.5 LB

750 HR

2800-8800 RPM

NOTES:

1. FINISH (PROTECTIVE COATING): THE SHAFT SHALL BE FINISHED IN A COLOR CONFORMING TO FED-STD-595 COLOR NUMBER 17875. THE FINISH SHALL BE UNAFFECTED BY ENVIRONMENTAL CONDITIONS SPECIFIED HEREIN
2. DIMENSIONS IN INCHES. UNLESS OTHERWISE SPECIFIED, TOLERANCES ± 0.010 . DIMENSIONING AND TOLERANCING SHALL BE IN ACCORDANCE WITH MIL-STD-8.
3. THE SHAFT SHALL INCORPORATE A TELESCOPING DEVICE AND SEALED BEARINGS.
4. FLIGHT TEST: 100 HOURS FLIGHT TIME ON THE S2 AIRCRAFT IS REQUIRED FOR QUALIFICATION.

PART NUMBER: M5091/2-47

FSC 6115