

MIL-S-3720E
 2 December 1986
 SUPERSEDING
 MIL-S-3720D
 25 February 1980

MILITARY SPECIFICATION

SKETCHING BOARD, WITH WATERPROOF COVER AND TRIPOD

This specification is approved for use by all Departments and Agencies of the Department of Defense.

1. SCOPE

1.1 Scope. This specification covers a wooden sketching board with built-in compass, a waterproof cover, and a folding extension tripod.

2. APPLICABLE DOCUMENTS

2.1 Government documents.

2.1.1 Specifications and standards. The following specifications and standards form a part of this specification to the extent specified herein. Unless otherwise specified, the issues of these documents shall be those listed in the issue of the Department of Defense Index of Specifications and Standards (DoDISS) and supplement thereto, cited in the solicitation.

SPECIFICATIONS

FEDERAL

- | | |
|----------|--|
| L-P-1035 | - Plastic Molding Material, Vinyl Chloride, Polymer and Vinyl Chloride-Vinyl Acetate Copolymer, Rigid. |
| QQ-B-613 | - Brass, Leaded and Nonleaded: Flat Products (Plate, Bar, Sheet, and Strip). |

Beneficial comments (recommendations, additions, deletions) and any pertinent data which may be of use in improving this document should be addressed to: USA Belvoir Research, Development, and Engineering Center, ATTN: STRBE-TSE, Fort Belvoir, VA 22060-5606 by using the self-addressed Standardization Document Improvement Proposal (DD Form 1426) appearing at the end of this document or by letter.

AMSC N/A

FSC 6675

DISTRIBUTION STATEMENT A. Approved for public release; distribution is unlimited.

MIL-S-3720E

- QQ-B-750 - Bronze, Phosphor; Plate, Rod, Sheet, Strip, Flat Wire, and Structural and Special Shaped Sections.
- QQ-C-390 - Copper Alloy Castings (Including Cast Bar).
- MMM-A-100 - Adhesive, Animal Glue.
- PPP-B-601 - Boxes, Wood, Cleated-Plywood.
- PPP-B-621 - Boxes, Wood, Nailed and Lock-Corner.
- PPP-B-636 - Boxes, Shipping, Fiberboard.

MILITARY

- MIL-T-704 - Treatment and Painting of Materiel.

STANDARDS

MILITARY

- MIL-STD-105 - Sampling Procedures and Tables for Inspection by Attributes.
- MIL-STD-129 - Marking for Shipment and Storage.
- MIL-STD-889 - Dissimilar Metals.

(Copies of specifications, standards, and other Government documents required by contractors in connection with specific acquisition functions should be obtained from the contracting activity or as directed by the contracting officer.)

2.2 Other publications. The following documents form a part of this specification to the extent specified herein. Unless otherwise specified, the issues of the documents which are DOD adopted shall be those listed in the issue of the DoDISS specified in the solicitation. Unless otherwise specified, the issues of documents not listed in the DoDISS shall be the issue of the non-Government documents which is current on the date of the solicitation.

AMERICAN SOCIETY FOR TESTING AND MATERIALS (ASTM)

- B 209 - Aluminum-Alloy Sheet and Plate.
- B 221 - Aluminum-Alloy Extruded Bars, Rods, Shapes, and Tubes.
- B 316 - Aluminum-Alloy Rivet and Cold-Heading Wire and Rod.
- D 2016 - Moisture Content of Wood.
- D 3951 - Standard Practice, for Commercial Packaging.

(Application for copies should be addressed to the American Society for Testing and Materials, 1916 Race Street, Philadelphia, PA 19103.)

(Non-Government standards and other publications are normally available from the organizations which prepare or which distribute the documents. These documents also may be available in or through libraries or other informational services.)

MIL-S-3720E

2.3 Order of precedence. In the event of a conflict between the text of this specification and the references cited herein, (except for associated detail specifications, specifications sheets or MS standards), the text of this specification shall take precedence. Nothing in this specification, however, shall supersede applicable laws and regulations unless a specific exemption has been obtained.

3. REQUIREMENTS

3.1 Description. The sketching board, with waterproof cover and tripod (hereinafter specified as sketching board), shall be as shown on figure 1 through 4 and as specified herein.

3.2 First article. Unless otherwise specified (see 6.2), a sample shall be subjected to first article inspection (see 4.3 and 6.3). Any changes or deviations of sketching boards from the approved first article during production will be subject to the approval of the contracting officer. Approval of the first article will not relieve the contractor of his obligation to furnish sketching boards conforming to this specification.

3.3 Material. Material shall be as specified herein and on the applicable figures. Materials not specified shall be selected by the contractor and shall be subject to all provisions of this specification.

3.3.1 Material deterioration prevention and control. The sketching board shall be fabricated from compatible materials, inherently corrosion resistant or treated to provide protection against the various forms of corrosion and deterioration that may be encountered in any of the applicable operating and storage environments to which the sketching boards may be exposed.

3.3.1.1 Dissimilar metals. Dissimilar metals shall not be used in intimate contact with each other unless protected against galvanic corrosion. Dissimilar metals and methods of protection are defined and detailed in MIL-STD-889.

3.3.1.2 Identification of materials and finishes. The contractor shall identify the specific material, material finish or treatment for use with component and subcomponent, and shall make information available upon request to the contracting officer or designated representative.

3.3.2 Recovered materials. For the purpose of this requirement, recovered materials are those materials which have been collected from solid waste and reprocessed to become a source of raw materials, as distinguished from virgin raw materials. Unless otherwise specified (see 3.3.11), the components, pieces and parts incorporated in the sketching board may be newly fabricated from recovered materials to the maximum extent practicable, provided the sketching board produced meets all other requirements of this specification. Used, rebuilt or remanufactured components, pieces and parts shall not be incorporated in the sketching board.

MIL-S-3720E

3.3.3 Cotton duck. Cotton duck shall be 12-ounce, hard textured, cotton cloth, treated for mildew resistance with copper 8-quinolinolate, and dyed green 383 in accordance with MIL-T-704. The treatment and dyeing processes shall not leave material on the duck surface that will stain or adversely affect drawing paper carried in the cover fabricated from the duck.

3.3.4 Thread. Thread shall be three-cord (stitching) type made from long-line linen, treated for mildew resistance with copper 8-quinolinolate, and dyed green 383 in accordance with MIL-T-704.

3.3.5 Binding tape. Tape shall be plain weave general purpose cotton textile dyed and treated the same as cotton duck.

3.3.6 Closure tapes. The pile tape shall be nylon, 1 inch wide, 8.0 mil hook (330 denier), color black, and the bonded hook tape shall be nylon hook, nylon ground, 8.0 mil hook (330 denier), color black, velcro brand or equal.

3.3.7 Phosphor bronze. The phosphor bronze used in the fabrication of the sketching board shall conform to QQ-B-750 and, unless otherwise specified (see 6.2), composition and temper are optional.

3.3.8 Brass. The brass shall be leaded and nonleaded yellow brass, and shall conform to QQ-B-613, composition and temper optional, or QQ-C-390, Alloy No. 854.

3.3.9 Aluminum. When specified (see 6.2), aluminum alloy 2024, temper T4 conforming to ASTM B 209, B 221, or B 316, may be substituted for phosphor bronze or brass materials.

3.3.10 Adhesive. The adhesive shall conform to MMM-A-100, type II.

3.3.11 Plastic molding material. The plastic molding material shall conform to L-P-1035, composition A, type II, grade GU, color natural. Recovered materials shall not be used, as specified in L-P-1035.

3.3.12 Wood.

3.3.12.1 Softwood. Softwood shall be basswood, sugar pine, white pine, or ponderosa pine. The boards shall be free from defects, except that the bottom surface may contain mineral streaks. Sound knots of not more than 1/4-inch (6.4 millimeters [mm]) diameter and barely perceptible checks not more than 2 inches (50.8 mm) in length are acceptable. Light stain and mineral streaks occupying not more than 10 percent of the surface on which they appear shall not be considered defects. Moisture content of wood shall be not less than 6 percent nor more than 8 percent.

3.3.12.2 Hardwood. Hardwood shall be beech, birch, hickory, ash or pecan, and the slope of grain shall be not more than 1 in 15. The wood of the species used shall weigh not less than 40 pounds per cubic foot and shall be free from defects except for barely perceptible seasoning checks not more than 1 inch long and light stain and mineral streaks occupying not more than 10 percent of the surface on which they appear. Moisture content of wood shall be not less than 6 percent nor more than 8 percent.

MIL-S-3720E

3.4 Detailed requirements.

3.4.1 Graduations, numbers, and markings. Graduations, numbers, and marking shall be as shown on figure 2 and as specified herein. Graduations, numbers, and marking shall be filled with a permanent black filler or made by screening or photoengraving, shall be uniform and distinct, and shall cause no bulging or chipping of the remaining surface.

3.4.2 Compass. The compass shall be induction damped. The north-seeking half of the compass trough shall contain a clear plastic for viewing the north-seeking end of the needle. The needle shall contain a movable balance weight. The top of the compass shall be flush with the top of the sketching board.

3.4.3 Tripod. The upper struts, when detached from the tripod head, shall fold so as to lay along the middle struts. The middle struts shall be rigid and shall contain a clamp-screw device for locking the lower struts in place when extended or allowing the lower struts to slide inside the middle struts.

3.4.4 Waterproof cover (stitching). The edge of the sketching board cover shall be sewed with the three-cord (stitching) type of long-line linen thread to provide a bound seam edge.

3.5 Dimensions. Dimensions of the sketching board and its components shall be as shown on figures 1 through 4.

3.6 Color and finish.

3.6.1 Sketching board. The board shall be sanded and given two coats of spar varnish. The brass fittings shall be provided a black chemical finish produced by chemical or electrochemical treatment of the copper-alloy surfaces.

3.6.2 Tripod. The tripod legs shall be sanded, treated, and painted in accordance with MIL-T-704, type A, to provide protection against rust, corrosion, and deterioration. Only one coat of primer shall be applied. Metal fittings, except for threaded parts and bearing surfaces; shall be given a durable, lusterless finish, color approximating green 383 of MIL-T-704, type F or G, as applicable.

3.7 Marking.

3.7.1 Identification marking. The sketching board identification shall include the following: Item name, stock number, procurement instrument identification number, and the symbol "US". The marking shall be located on the back of the sketching board to the right of the instruction marking specified in 3.7.2.

3.7.2 Instruction marking. The following marking shall appear on the back of the sketching board in the center between the trough and the screw plate:

MIL-S-3720E

INSTRUCTIONS (1/4 in. high letters)

(0.2 inch high letters for 1 through 7)

1. STORE BOARD FLAT WITH THIS SIDE UP.
2. USE ONLY CLAMPS TO ATTACH PAPER.
3. SCREW BOARD LIGHTLY TO TRIPOD.
4. SET UP TRIPOD TO GIVE APPROXIMATE ORIENTATION.
5. MAKE FINAL ORIENTATION BY TURNING BOARD ON TRIPOD.
6. AFTER FINAL ORIENTATION. SCREW BOARD FIRMLY ON TRIPOD.
7. NEVER USE FORCE TO MAKE ANY ADJUSTMENT.

3.8. Workmanship.

3.8.1 Sketching board and tripod. Sketching boards and tripods shall be clean and free from warpage, chipping, seaming, or splintering. All screws shall be fully turned down. All metal parts shall be clean and free from burrs and harmful extraneous material. All edges shall be rounded or beveled. The struts shall fold and slide without twisting, binding, or bending.

3.8.2 Waterproof cover. Finished covers shall be clean and free from abrasion marks, permanently embedded creases, loopy or loose edges, clearly visible dye stains or streaks, and oil spots created by treating which would affect appearance.

4. QUALITY ASSURANCE PROVISIONS

4.1 Responsibility for inspection. Unless otherwise specified in the contract or purchase order, the contractor is responsible for the performance of all inspection requirements as specified herein. Except as otherwise specified in the contract or purchase order, the contractor may use his own or any other facilities suitable for the performance of the inspection requirements specified herein, unless disapproved by the Government. The Government reserves the right to perform any of the inspections set forth in the specification where such inspections are deemed necessary to assure supplies and services conform to prescribed requirements.

4.1.1 Responsibility for compliance. All items must meet all requirements of sections 3 and 5. The inspection set forth in this specification shall become a part of the contractor's overall inspection system or quality program. The absence of any inspection requirements in the specification shall not relieve the contractor of the responsibility of assuring that all products or supplies submitted to the Government for acceptance comply with all requirements of the contract. Sampling in quality conformance does not authorize submission of known defective material, either indicated or actual, nor does it commit the Government to acceptance of defective material.

4.2 Classification of inspections. The inspection requirements specified herein are classified as follows:

- a. First article inspection (see 4.3).
- b. Quality conformance inspection (see 4.4).
- c. Inspection of packaging (see 4.6).

MIL-S-3720E

4.3 First article inspection.

4.3.1 Examination. The first article sketching board, cover, and tripod shall be examined as specified in 4.5.1. Presence of one or more defects shall be cause for rejection.

4.3.2 Tests. The first article sketching board, cover, and tripod shall be tested as specified in 4.5.2. Failure of the test shall be cause for rejection.

4.4 Quality conformance inspection.

4.4.1 Sampling. Sampling for examination and test shall be in accordance with MIL-STD-105.

4.4.2 Examination. Samples selected in accordance with 4.4.1 shall be examined as specified in 4.5.1. AQL for major defects shall be 1.0 percent defective. AQL for minor defects shall be 2.5 percent defective.

4.4.3 Tests. Samples selected in accordance with 4.4.1 shall be tested as specified in 4.5.2. AQL for major defects shall be 1.0 percent defective. AQL for moisture content shall be 1.0 percent defective.

4.5 Inspection procedure.

4.5.1 Examination. The sketching board, cover, and tripod shall be examined as specified herein for the defects listed in table I.

TABLE I. Examination schedule.

Number	Defects	Requirement paragraph
<u>Major</u>		
101.	Material not as specified. Each incorrect material shall constitute one defect.	3.3
102.	Materials are not resistant to corrosion and deterioration or treated to be resistant to corrosion and deterioration for the applicable and operating environments.	3.3.1
103.	Dissimilar metals as defined in MIL-STD-889 are not effectively insulated from each other.	3.3.1.1
104.	Contractor does not have documentation available for identification of material, material finishes or treatment.	3.3.1.2
105.	Used, rebuilt or remanufactured components, pieces or parts incorporated in the sketching board.	3.3.2

MIL-S-3720E

TABLE I. Examination schedule. (Cont'd)

Number	Defects	Requirement paragraph
106.	Graduations and numbering not as specified.	3.4.1
107.	Compass not as specified.	3.4.2
108.	Tripod not as specified.	3.4.3
109.	Seam type not as specified.	3.4.4
110.	Stitch type not as specified.	3.4.4
111.	Dimensions not as specified.	3.5
112.	Workmanship not as specified.	3.8
<u>Minor</u>		
201.	Color and finish not as specified.	3.6
202.	Marking not as specified.	3.7

4.5.2 Tests. The moisture content of the wood in the sketching board, tripod, and tripod head shall be tested by the electronic moisture meter-method of ASTM D 2016. A moisture content less than 6 percent or more than 8 percent shall constitute failure of this test.

4.6 Inspection of packaging.

4.6.1 Quality conformance inspection.

4.6.1.1 Unit of product. For the purpose of inspection, a completed pack prepared for shipment shall be considered a unit of product.

4.6.1.2 Sampling. Sampling for examination shall be in accordance with MIL-STD-105.

4.6.1.3 Examination. Samples, selected in accordance with 4.6.1.2, shall be examined for the following defects. AQL shall be 1.0 percent defective.

<u>No.</u>	<u>Defect</u>	<u>A</u>	<u>B</u>	<u>Com</u>
113.	Waterproof cover not in place on sketching board as specified.	5.1.1		5.1.2
114.	Tripod not collapsed and secured as specified.	5.1.1		5.1.2
115.	Unit container not as specified.	5.1.1		
116.	Cushioning and positioning devices not utilized as specified.	5.1.1		
117.	Unit container closure not as specified	5.1.1		
118.	Commercial preservation not as specified.			5.1.2
119.	Shipping container not as specified.	5.2.1	5.2.2	

MIL-S-3720E

<u>No.</u>	<u>Defect</u>	<u>A</u>	<u>B</u>	<u>Com</u>
120.	Gross weight of shipping container exceeds acceptable maximum.	5.2.1	5.2.2	
121.	Closure of shipping container not as specified.	5.2.1	5.2.2	
122.	Strapping not as specified.	5.2.1	5.2.2	
123.	Commercial packing not as specified.			5.2.3
124.	Marking not as specified.	5.3.1	5.3.1	5.3.2

5. PACKAGING

5.1 Preservation. Preservation shall be level A or commercial as specified (see 6.2).

5.1.1 Level A. Each sketching board, with the waterproof cover in place, and with the tripod collapsed and secured in its smallest configuration, shall be placed together, as a unit, in a close-fitting box conforming to PPP-B-636, grade W5c, style optional. Cushioning and positioning devices shall be utilized within the box as required to prevent damage to the contents and to eliminate excessive movement within the container. Box closure shall be method V in accordance with the appendix to the box specification.

5.1.2 Commercial. Each sketching board, with the waterproof cover in place, and with the tripod collapsed and secured in its smallest configuration, shall be preserved in accordance with ASTM D 3951.

5.2 Packing. Packing shall be level A, level B or commercial as specified (see 6.2).

5.2.1 Level A. Sketching boards, preserved as specified in 5.1, shall be packed in close-fitting boxes conforming to PPP-B-601, overseas type, style optional, or PPP-B-621, class 2, style optional. The gross weight of each box shall not exceed 200 pounds. Box closure and strapping shall be as specified in the applicable box specification or the appendix thereto except the strapping shall be flat and the finish B.

5.2.2 Level B. Sketching boards, preserved as specified in 5.1, shall be packed as specified in 5.2.1 for level A except that boxes shall be domestic type or class and that strapping may be finish A.

5.2.3 Commercial. Complete sketching boards, preserved as specified in 5.1, shall be packed in accordance with ASTM D 3951.

5.3 Marking.

5.3.1 Levels A and B. In addition to any special or identification marking required by the contract or purchase order, level A and level B marking shall be in accordance with MIL-STD-129.

MIL-S-3720E

5.3.2 Commercial. Commercial marking shall be in accordance with ASTM D 3951. Additionally, each shipping container shall be marked with the cube and gross weight.

6. NOTES

6.1 Intended use. The sketching board is intended for use in mapping and topographic surveys.

6.2 Ordering data. Acquisition documents should specify the following:

- a. Title, number, and date of this specification.
- b. When a first article is required for inspection and approval, and the number of units required (see 3.2).
- c. When the composition and temper of the phosphor bronze in the sketching board is not optional (see 3.3.7).
- d. When aluminum alloy may be substituted for bronze and brass (see 3.3.9).
- e. Degree of preservation and degree of packing required (see 5.1 and 5.2).
- f. Any special marking (see 5.3.1).

6.3 First article. When a first article inspection is required, the items should be an initial production. The first article should consist of one or more units. The contracting officer should include specific instructions in acquisition documents regarding arrangements for examinations, tests, and approval of the first article test results and disposition of the first article.

6.4 Subject term (key word) listing.

Aluminum alloy 2024
Basswood
Beech
Brass
Built-in compass
Hickory
Pecan
Phosphor bronze
Ponderosa pine
Sugar pine
Tripod
White pine
Wooden sketching board

MIL-S-3720E

6.5 Changes from previous issue. Asterisks (or vertical lines) are not used in this revision to identify changes with respect to the previous issue due to the extensiveness of the changes.

Custodians:

Army - ME
Air Force - 99

Preparing activity:

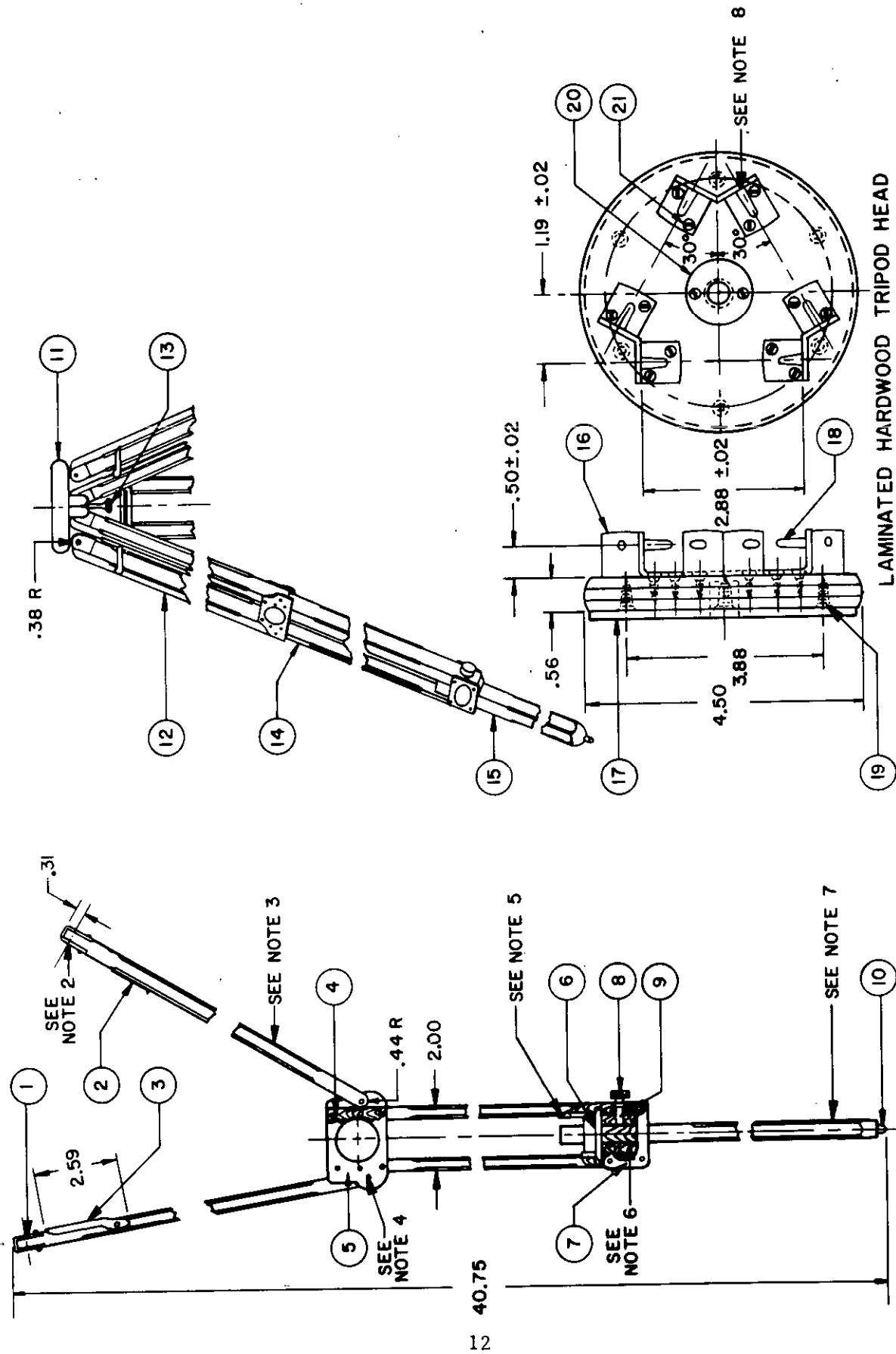
Army - ME

Project 6675-0796

Review activities:

Navy - MC
Air Force - 82
DLA - GS

MIL-S-3720E



NOTE:
1. SEE FIGURE 1B FOR LIST OF MATERIALS AND NOTES.

FIGURE 1A. Tripod and tripod head details.

X-3280-1

MIL-S-3720E

FIND NO.	QTY.	DESCRIPTION AND SPECIFICATION
1	6	BRASS END CLIP, NO. 20 GAGE (B&S)
2	3	BRASS SPREADER STOP, NO. 20 GAGE (B&S)
3	3	BRASS SPREADER, NO. 16 GAGE (B&S)
4	36	BRASS RIVET, .06±.02 DIA ROUND HEAD
5	6	BRASS UPPER TIE PLATE, NO. 20 GAGE (B&S)
6	6	PHOSPHOR BRONZE SLIDING PIN
7	6	BRASS LOWER TIE PLATE, NO. 20 GAGE (B&S)
8	3	BRASS SLEEVE NUT (KNURL)
9	3	BRASS CLAMP SCREW, 10-32 UNF-1A
10	3	STEEL PIN
11	1	LAMINATED HARDWOOD TRIPOD HEAD
12	6	UPPER STRUT, WOOD, .44 BY .81 BY 14.00
13	1	BRASS TRIPOD SCREW .375-16 UNC-1A (CAPTIVE)
14	6	MIDDLE STRUT, WOOD, .44 BY .81 BY 15.00
15	3	LOWER STRUT, WOOD, .56 BY .81 BY 14.31
16	3	BRASS LEG CLIP NO. 14 GAGE (B&S)
17	1	FELT CUSHION .06±.02 TH. BY 4.31±.03 DIA
18	6	BRASS PIN .56±.02 LONG BY .19±.02 TAPER TO .12±.02
19	6	BRASS SCREW, FLAT HEAD, NO. 7 BY .75 (NIP OFF POINTS AFTER SCREWS ARE DRAWN UP TIGHTLY).
20	1	BRASS PLATE 1.12±.02 DIA BY .09 ± .02 TH CENTER TAPPED .375-16 UNC-1B
21	12	BRASS SCREW, FLAT HEAD, NO. 5 BY .50

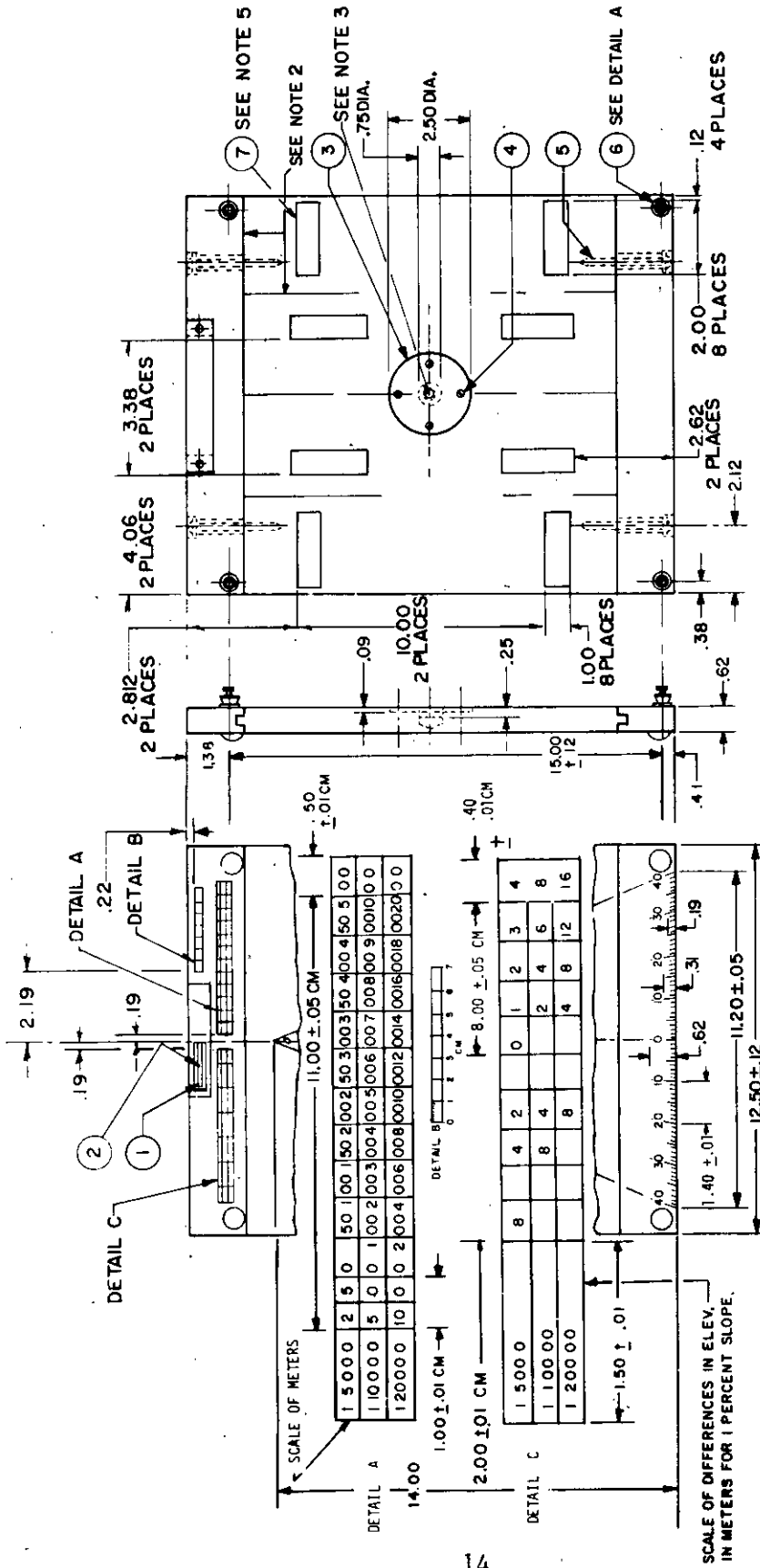
NOTES:

1. ALL DIMENSIONS ARE IN INCHES.
2. DRILL .16±.02 DIA AT ASSEMBLY.
3. CHAMFER .06 BY 45°.
4. PIVOT POINT FOR FOLDING UPPER STRUT ONTO MIDDLE STRUT.
5. CHANNEL FOR SLIDEPIN.
6. GLUE HARDWOOD SPACERS TO MIDDLE STRUT.
7. LOWER STRUT SLIDES INTO MIDDLE STRUT.
8. BRASS PIN TO BE RIVETED IN PLACE.
9. UNLESS OTHERWISE SPECIFIED TOLERANCES SHALL BE ±.03.

FIGURE 1B. Tripod and tripod head details.

X-3280-2A

MIL-S-3720E



FIND NO.	QTY.	DESCRIPTION AND SPECIFICATION
1	1	PLASTIC WINDOW, .06 THK.
2	1	COMPASS
3	1	BRASS SCREW PLATE, CENTER TAP, 375-16 UNC-1B.
4	4	BRASS SCREW, WOOD FL HD, NO. 6 BY .50
5	4	BRASS SCREW, WOOD RD HD, NO. 10 BY 2.50.
6	4	CLAMP PAPER (SEE FIG. 3 FOR DETAILS).
7	8	BONDED HOOK TAPE

FIGURE 2. Sketching board details.

X-3281C

MIL-S-3720E

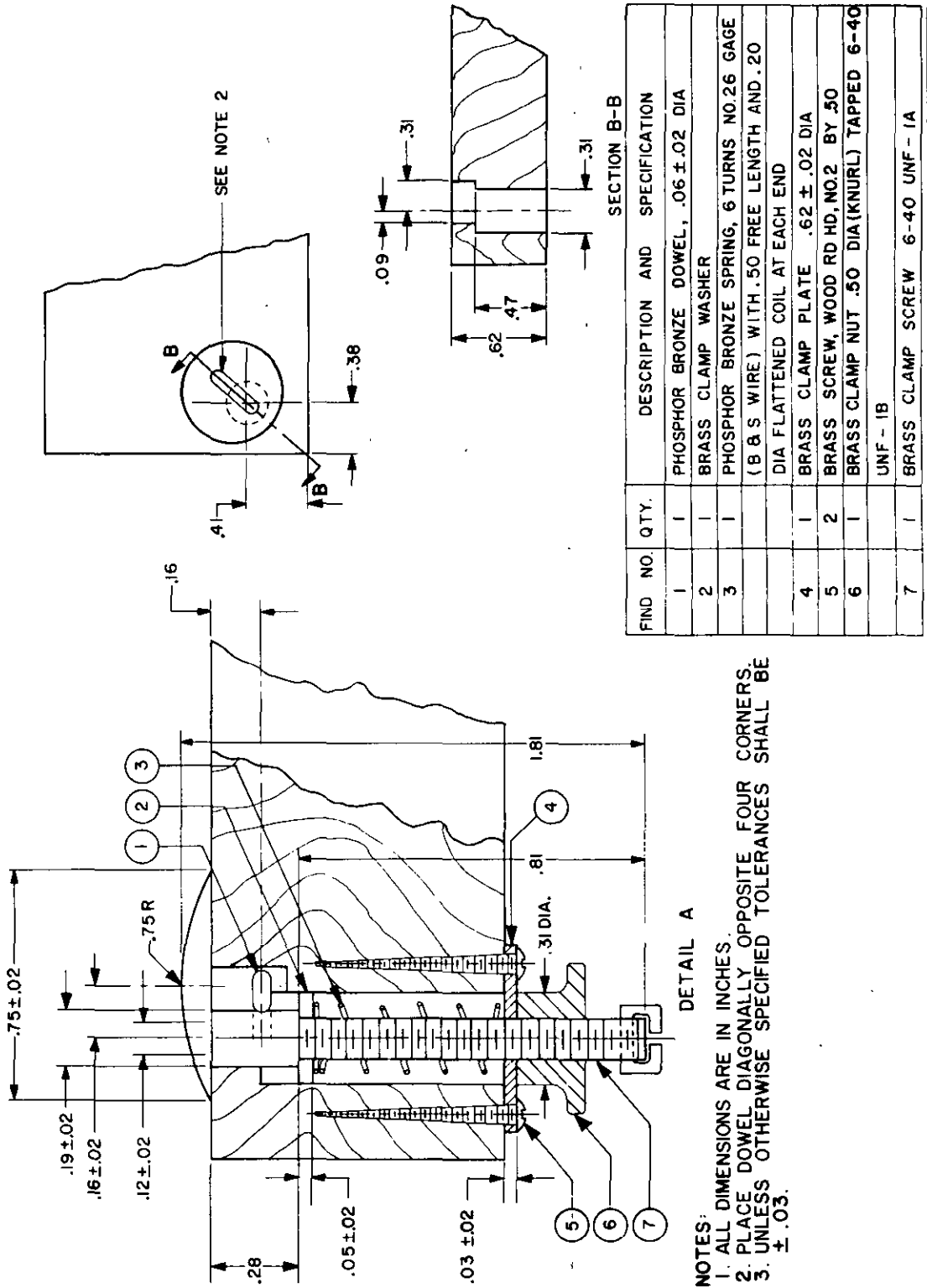
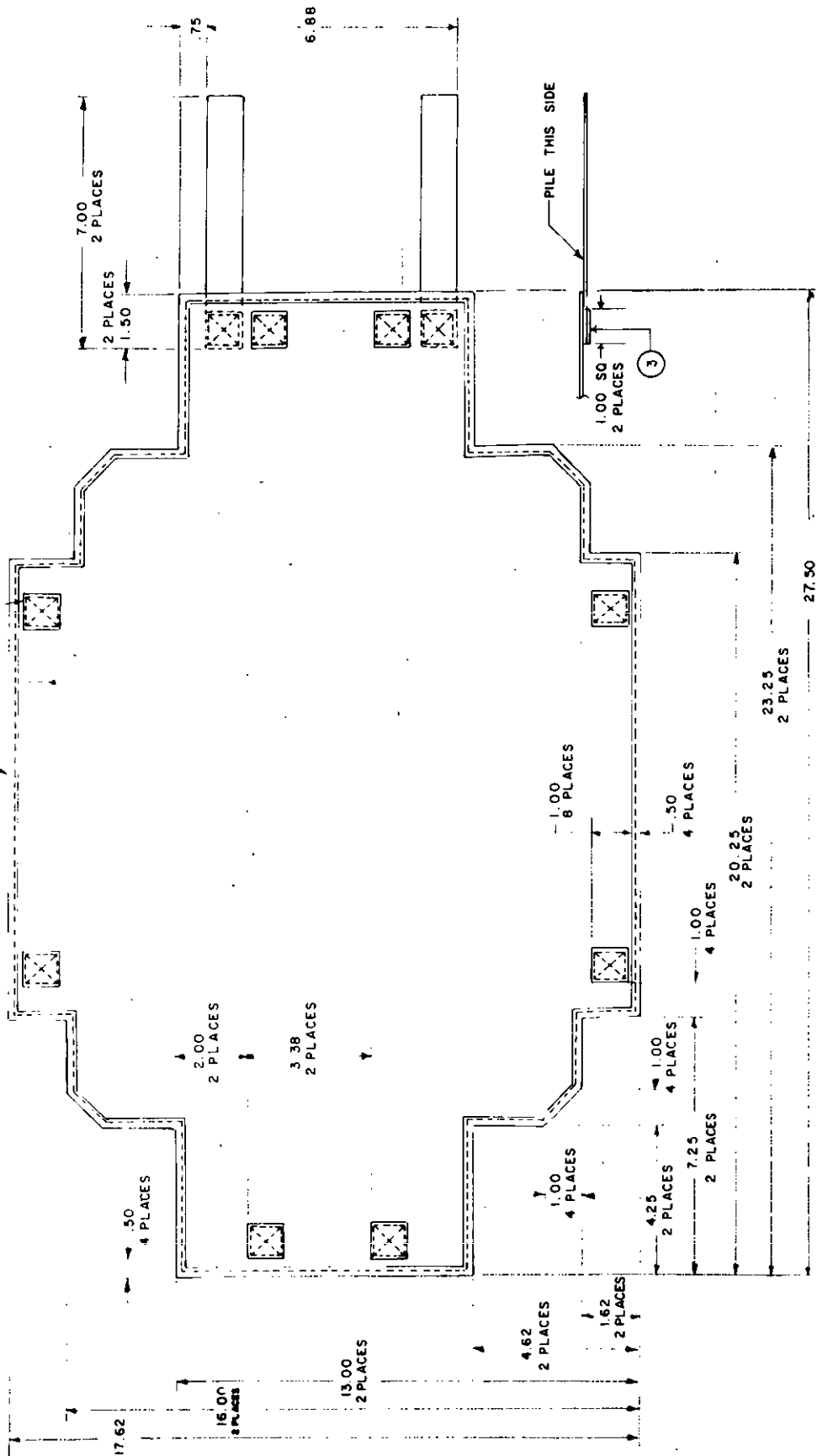


FIGURE 3. Screw clamp details and arrangement showing dowel location.

X-3282

MIL-S-3720E



FINDNO	QTY.	DESCRIPTION AND SPECIFICATION
1	AR	COTTON DUCK
2	AR	TAPE, BINDING
3	AR	PILE TAPE

NOTES:

1. ALL DIMENSIONS ARE IN INCHES.
2. TOLERANCES SHALL BE $\pm .12$.

FIGURE 4. Waterproof cover.

X-3283C

INSTRUCTIONS: In a continuing effort to make our standardization documents better, the DoD provides this form for use in submitting comments and suggestions for improvements. All users of military standardization documents are invited to provide suggestions. This form may be detached, folded along the lines indicated, taped along the loose edge (*DO NOT STAPLE*), and mailed. In block 5, be as specific as possible about particular problem areas such as wording which required interpretation, was too rigid, restrictive, loose, ambiguous, or was incompatible, and give proposed wording changes which would alleviate the problems. Enter in block 6 any remarks not related to a specific paragraph of the document. If block 7 is filled out, an acknowledgement will be mailed to you within 30 days to let you know that your comments were received and are being considered.

NOTE: This form may not be used to request copies of documents, nor to request waivers, deviations, or clarification of specification requirements on current contracts. Comments submitted on this form do not constitute or imply authorization to waive any portion of the referenced document(s) or to amend contractual requirements.

(Fold along this line)

(Fold along this line)

DEPARTMENT OF THE ARMY



NO POSTAGE
NECESSARY
IF MAILED
IN THE
UNITED STATES

OFFICIAL BUSINESS
PENALTY FOR PRIVATE USE \$300

BUSINESS REPLY MAIL
FIRST CLASS PERMIT NO. 12062 WASHINGTON D. C.

POSTAGE WILL BE PAID BY THE DEPARTMENT OF THE ARMY

COMMANDER
U.S. Army Belvoir Research,
Development and Engineering Center
ATTN: STRBE-TSE
Fort Belvoir, VA 22060-5606



