

INCH-POUND

MIL-S-24235/8B(SH)

28 December 1992

SUPERSEDING

MIL-S-24235/8A(SH)

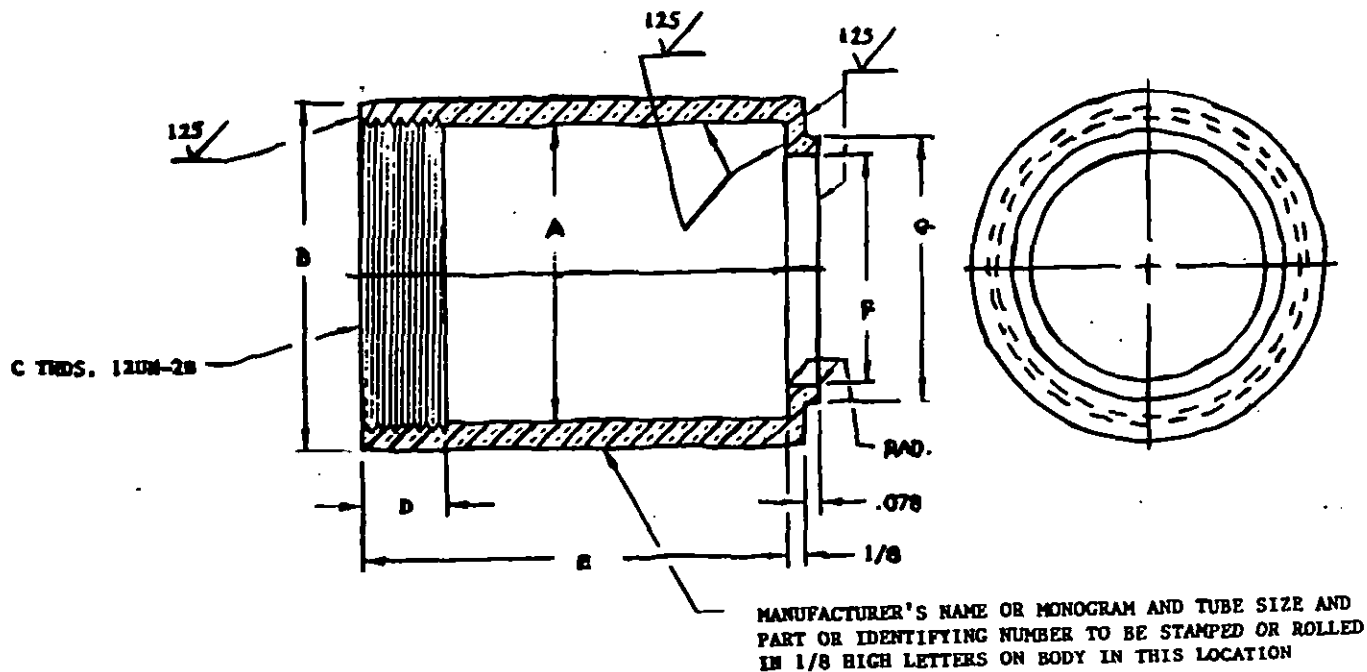
21 August 1989

MILITARY SPECIFICATION SHEET

STUFFING TUBES, METAL, AND PACKING ASSEMBLIES FOR
ELECTRIC CABLES, FOR SHEET METAL ENCLOSURES,
PRESSUREPROOF

This specification is approved for use by the Naval Sea Systems Command, Department of the Navy, and is available for use by all Departments and Agencies of the Department of Defense.

The requirements for acquiring the product described herein shall consist of this specification sheet and the issue of the following specification listed in that issue of the Department of Defense Index of Specifications and Standards (DODISS) specified in the solicitation: MIL-S-24235.

FIGURE 1. Stuffing tube body. (01) (02)

NOTES:

- Dimensions are in inches.
- Unless otherwise specified, tolerances shall be as follows:
Decimals - plus or minus 0.005 inch.
Fractions - plus or minus 1/64 inch.
Angular dimensions - plus or minus 30 minutes.
Molded parts shall conform to MIL-HDBK-149.

AMSC N/A

1 of 3

FSC 5975

DISTRIBUTION STATEMENT A. Approved for public release; distribution is unlimited.

MIL-S-24235/8B(SH)

TABLE I. Part or identifying numbers.

Assembly part or identifying number	Tube size	Part or identifying numbers of components		
		Tube body 1 required	Gland nut 1 required	O-ring gasket 1 required
M24235/8-001	A	M24235/8-011	M24235/7-021	MS28775-113
M24235/8-002	B	M24235/8-012	M24235/7-022	MS28775-116
M24235/8-003	C	M24235/8-013	M24235/7-023	MS28775-214
M24235/8-004	D	M24235/8-014	M24235/7-024	MS28775-214
M24235/8-005	E	M24235/8-015	M24235/7-025	MS28775-218
M24235/8-006	F	M24235/8-016	M24235/7-026	MS28775-223

TABLE II. Tube body dimensions.

Part or identifying number	A DIA	B DIA	C THDS	D <u>1/</u>	E	F DIA	G DIA
M24235/8-011	0.850	1.050	0.938	7/16	2-1/16	9/16	11/16
M24235/8-012	1.062	1.315	1.188	7/16	2-1/4	3/4	7/8
M24235/8-013	1.368	1.660	1.500	9/16	2-11/16	1	1-1/8
M24235/8-014	1.368	1.660	1.500	9/16	3-9/32	1	1-1/8
M24235/8-015	1.600	1.900	1.750	9/16	2-7/8	1-7/32	1-7/16
M24235/8-016	2.032	2.375	2.125	9/16	2-7/8	1-9/16	1-13/16

1/ Tolerance shall be minus 0, plus 4 threads.

REQUIREMENTS:

1. Cable packing and end sealing shall be in accordance with DOD-STD-2003, section 3.
2. O-ring gasket shall be furnished with the stuffing tube.
3. Intended use: The stuffing tubes are for electric cable penetrations of pressureproof sheet metal enclosures for inboard submarine applications. Sealing plugs for use with these tubes are shown in DOD-STD-2003, section 3.

MIL-S-24235/8B(SH)

TABLE III. Parts list.

Item no.	Description <u>1/</u>	Qty <u>2/</u>	Material and specification	Remarks
01	Stuffing tube assemblies	-	--	See figure 1 and table I
02	Tube body	1	Brass, coml <u>3/</u>	See figure 1 and table II
03	Gland nut	1	Brass, <u>3/</u> M24235/7	See table I
04	O-ring	1	Nitrile rubber, MS28775	See table I

1/ See applicable figure and table listed in "Remarks" column for part numbers and dimensions.

2/ Quantity is for one complete assembly of each size.

3/ May be of another material when specified in the contract or order (see MIL-S-24235).

This specification sheet replaced that part of Drawing, NAVSHIPS No. S6202-73902 covering stuffing tubes for sheet metal enclosures.

Revision letters are not used to denote changes due to the extensiveness of the changes.

Preparing activity:
Navy - SH
(Project 5975-N078-08)