

INCH-POUND

MIL-S-24235/11C(SH)

28 December 1992

SUPERSEDING

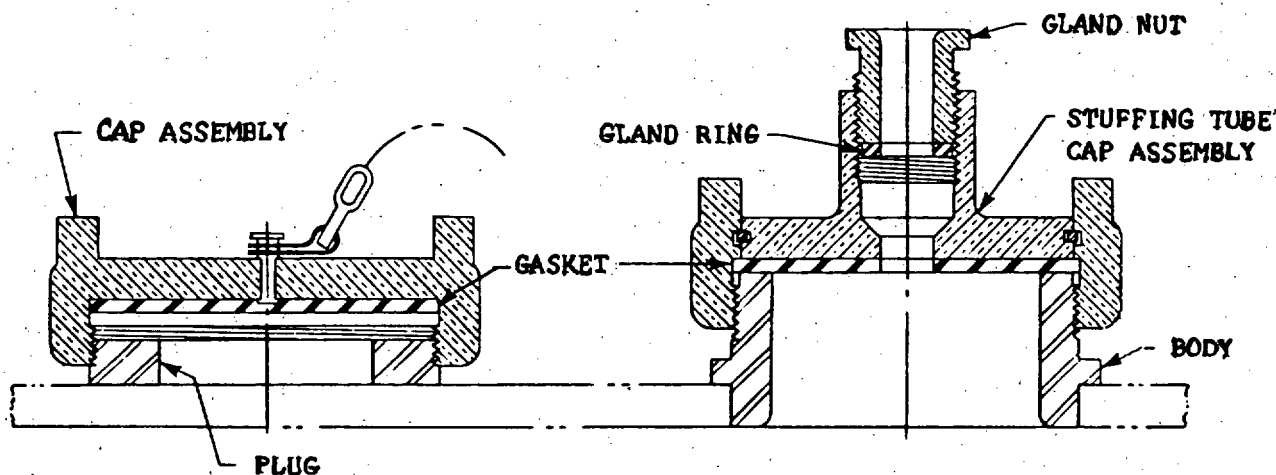
MIL-S-24235/11B(SH)

21 August 1989

MILITARY SPECIFICATION SHEET**STUFFING TUBES, METAL, AND PACKING ASSEMBLIES FOR
ELECTRIC CABLES, OUTLET, WEATHER DECK,
NONMAGNETIC**

This specification is approved for use by the Naval Sea Systems Command, Department of the Navy, and is available for use by all Departments and Agencies of the Department of Defense.

The requirements for acquiring the product described herein shall consist of this specification sheet and the issue of the following specification listed in that issue of the Department of Defense Index of Specifications and Standards (DODISS) specified in the solicitation: MIL-S-24235.

FIGURE 1. Stuffing tube assembly.

①

NOTES:

1. Dimensions are in inches.
2. Unless otherwise specified, tolerances shall be as follows:
 Decimals - plus or minus 0.005 inch.
 Fractions - plus or minus 1/64 inch.
 Angular dimensions - plus or minus 30 minutes.
 Molded parts shall conform to MIL-HDBK-149.

AMSC N/A

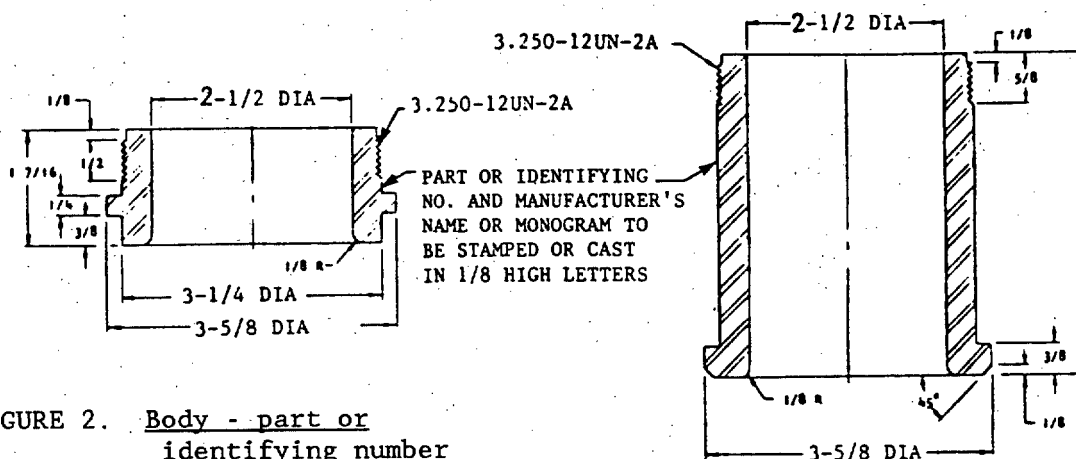
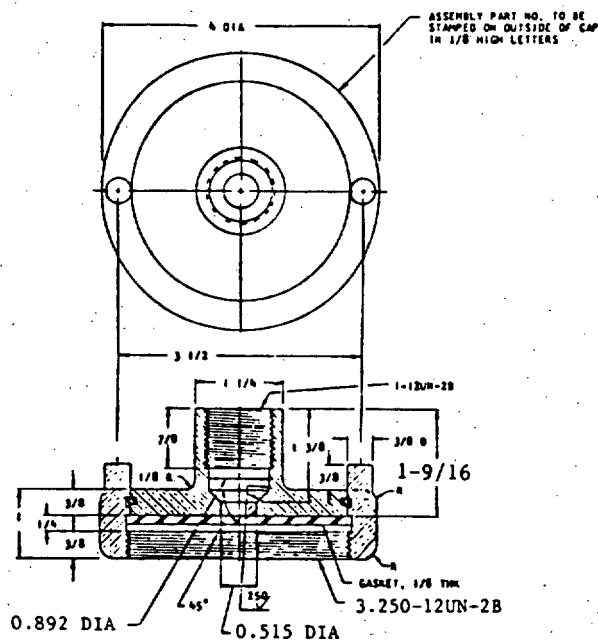
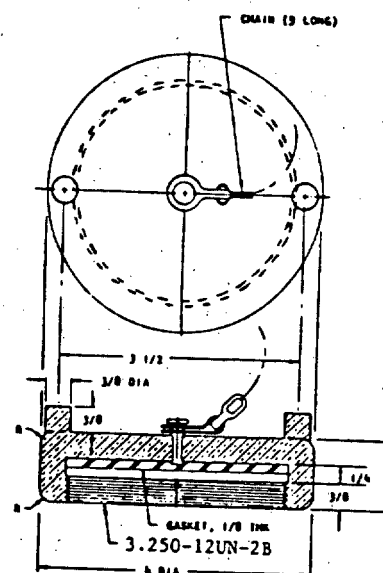
1 of 5

FSC 5975

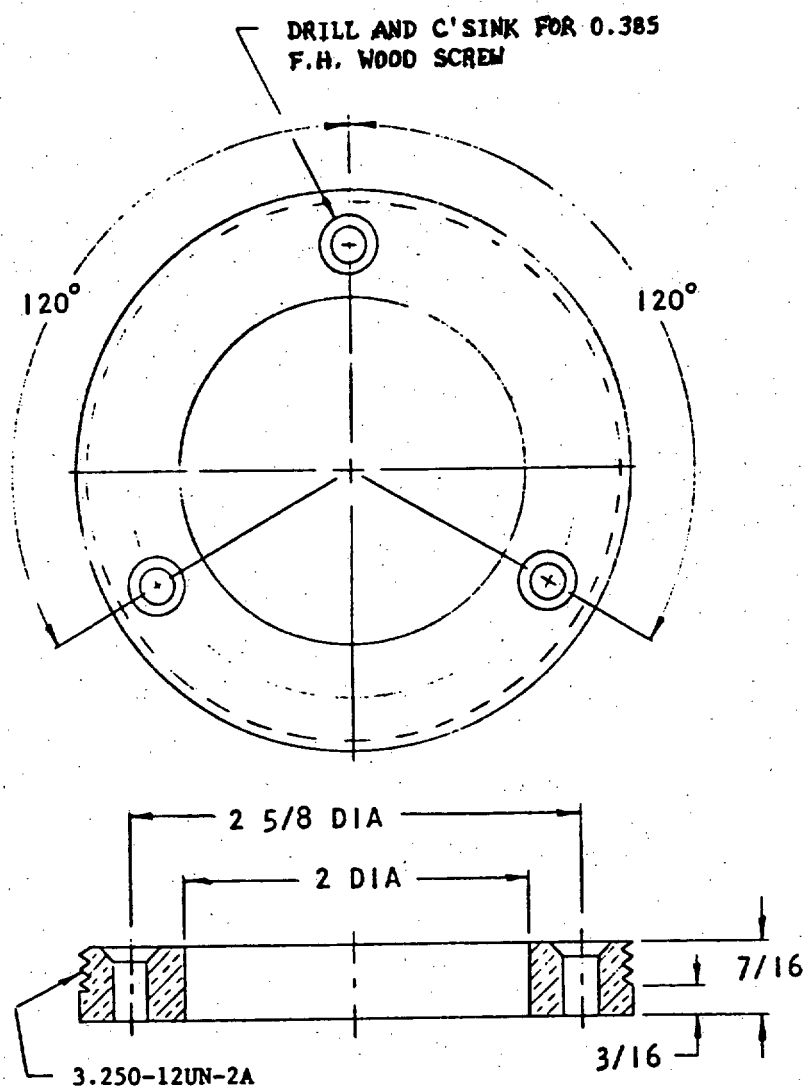
DISTRIBUTION STATEMENT A. Approved for public release; distribution is unlimited.

TABLE I. Part or identifying numbers.

Symbol number	Assembly part or identifying number	Part or identifying number of body
1853	M24235/11-01	M24235/11-11
996	M24235/11-02	M24235/11-12

FIGURE 2. Body - part or identifying number
M24235/11-11. (02)FIGURE 3. Body - part or identifying number
M24235/11-12. (03)FIGURE 4. Stuffing tube cap assembly. (04)FIGURE 5. Cap assembly. (05)

MIL-S-24235/11C(SH)

FIGURE 6. Dummy plug. (08)**REQUIREMENTS:**

1. Assembly M24235/11-01 shall be furnished with a 0.309-32 UN-2A round head machine screw, 3/8 inch long, for securing the attachment chain to the deck. Assembly M24235/11-02 shall be provided with a 0.385 round head wood screw, 1 inch long, for a similar purpose.
2. Plug mounting screws: Three 0.385 flat head wood screws, 1-1/2 inches long, shall be furnished with assembly M24235/11-02. Mounting screws are not required with assembly M24235/11-01.
3. Outlets are designed to accommodate a single cable and type CCC-2 plug in accordance with DOD-STD-2003, section 3.
4. Packing: Cable packing shall be in accordance with DOD-STD-2003.
5. Intended use: The stuffing tubes are for electric cable penetration of weather decks and hulls of surface ships. Assembly M24235/11-02 shall be used in all applications involving wood covered weather decks.

MIL-S-24235/11C(SH)

TABLE IV. Parts list.

Item no.	Description 1/	Qty 2/ M24235/11-		Material and specification	Remarks
		01	02		
01	Outlet assembly	--	--	--	See figure 1
02	Body	1		CRES, Class 304, cond A, QQ-S-763	See figure 2
03	Body		1	CRES, class 304, cond A, QQ-S-763	See figure 3
04	Stuffing tube cap assembly	1	1	Bronze, coml	See figure 4
05	Cap assembly	1	1	Bronze, coml	See figure 5
06	Gland nut	1	1	Brass, coml,	M24235/9-062
07	Gland ring	1	1	Brass, coml	M24235/9-092
08	Dummy plug	1	1	CRES, class 304, cond A, QQ-S-763	See figure 6
09	Wire, square, 2/ 0.090 inch minimum	1	1	Phosphor bronze, alloy 510, QQ-W-321	--
10	Chain, 9 Lg	1	1	CRES or brass, coml	See figure 5
11	Screw, mach, round head, 0.309-32UN-2A x 3/8 Lg	1		CRES or brass, coml	--
12	Screw, wood, round head, 0.385 x 1 Lg		1	CRES or brass, coml	--

See footnotes at end of table.

MIL-S-24235/11C(SH)

TABLE IV. Parts list - Continued.

Item no.	Description <u>1</u> /	Qty <u>2</u> / M24235/11-		Material and specification	Remarks
		01	02		
13	Screw, wood, flat head, 0.385 x 1-1/2 Lg		3	CRES or brass, coml	--
14	Gasket, 1/8 Thk	1	1	Rubber, MIL-R-900	See figures 4 and 5

1/ See table I for part numbers and figures listed in "Remarks" column for dimensions.

2/ May not be required if manufacturer selects another method of securing the stuffing tube to the stuffing tube cap assembly (see MIL-S-24235).

The previous issue of this specification sheet superseded Drawings 9-S-4799-L and S6202-74438.

Revision letters are not used to denote changes due to the extensiveness of the changes.

Preparing activity:

Navy - SH

(Project 5975-N078-11)